



**US ARMY CORPS  
OF ENGINEERS**  
St. Louis District  
Gateway to Excellence

# Public Notice

Reply To:  
U.S. Army Corps of Engineers  
Attn: CEMVS-OD-F  
1222 Spruce Street  
St. Louis, Missouri 63103-2833

Public Notice No.  
**P-3088**  
Public Notice Date  
**May 03, 2018**  
Expiration Date  
**May 24, 2018**

**Postmaster Please Post Conspicuously Until:**

File Number: MVS-2018-265

Interested parties are hereby notified that an application has been received for Department of the Army permit authorization to construct the Kimmswick Riverfront Development, as described below and shown on the attachments.

**COMMENTS AND ADDITIONAL INFORMATION:** Comments on the described work should reference the U.S. Army Corps of Engineers File Numbers shown above and must reach this office no later than the above expiration date of the Public Notice to become part of the record and be considered in the decision. Comments should be mailed to the following address:

U.S. Army Corps of Engineers  
(Regulatory Branch)  
1222 Spruce Street  
St. Louis, Missouri 63103-2833  
ATTN: Alan Edmondson

**APPLICANT:** Jefferson County Port Authority, P.O. Box 603, Hillsboro, MO 63050

**LOCATION:** The proposed project occurs on the right descending bank of the Mississippi River at approximate river mile 159. Specifically, the Kimmswick Riverfront Development is located east of Kimmswick at latitude 38.3655119 and longitude -90.360707 in Jefferson County, Missouri.

**PROJECT DESCRIPTION:** The Jefferson County Port Authority (JCPA) requests permit authorization to construct infrastructure facilities needed to operate passenger cruises on the Mississippi River. The purpose and need of the Kimmswick Riverfront Development project is to create a safe and easily accessible location for the embarking and disembarking of river cruise vessels and passengers, primarily the Delta Queen, or similar, steamboat. JCPA plans to revitalize a riverfront development site near Kimmswick in Jefferson County, Missouri that was formerly used to operate steamboat cruises. The revitalization project consists of repaving and widening existing access roads, creation of parking lots, restoration of a formerly used dock, and creation of a bank landing. JCPA will minimize impacts to wetlands, waterbodies and the Mississippi River by utilizing previously developed sections of the site. It is anticipated the Delta Queen will increase tourism in Kimmswick and Jefferson County, Missouri.

Revitalization of the riverfront is anticipated to impact 0.84 acres of wetlands (0.84 acre of forested wetlands), about 30 linear feet of an unnamed tributary and 0.25 acres (208 linear feet) of the Mississippi River for construction of the necessary infrastructure improvements.

Impacts to the Mississippi River include creation of a bank landing. A bank landing is an at-grade concrete pad on the shoreline similar to the riverfront adjacent to the Gateway Arch in downtown St. Louis. The proposed bank landing will measure about 208 feet wide (along the river bank) by 145 feet long (bottom to top). Hanson estimates a little over one-third of the bank landing will be below the ordinary high water of the Mississippi River, resulting in filling about 10,560 square feet (0.25 acre) on the river bank.

Reconstruction of the former dock within the Mississippi River is intended to be the long-term docking location for the Delta Queen when it is eventually converted into a hotel. When docked the Delta Queen will be about 490 feet from the western limit of the navigation channel (Figure 9, Appendix B). When river excursions are ongoing, vessels will nose into the bankline, temporarily, to load/unload passengers. The applicant will be required to comply with all conditions stipulated by the United States Coast Guard.

By utilizing a previously developed site, JCPA will minimize impacts to wetlands and waterbodies to the greatest extent possible while maintaining the purpose and need of the project. However, due to the upgrades and restoration of the previous developed areas, some impacts to wetlands and waterbodies are unavoidable. JCPA proposes to mitigate for unavoidable impacts to waters of the United States by purchasing credits from the Land Learning Foundation.

**LOCATION MAPS AND DRAWINGS:** (See attached.)

**ADDITIONAL INFORMATION:** Additional information may be obtained by contacting Alan Edmondson, Project Manager, U.S. Army Corps of Engineers, at (314) 331-8811. Inquiries may also be sent by facsimile at (314) 331-8741 or by e-mail to [Alan.Edmondson@usace.army.mil](mailto:Alan.Edmondson@usace.army.mil).

**AUTHORITY:** This permit will be processed under the provisions of Section 10 of the Rivers and Harbors Act of 1899 (33 U.S.C. 403) and Section 404 of the Clean Water Act (33 U.S.C. 1344).

**PUBLIC HEARING:** Any person may request, in writing, within the comment period specified in this notice, that a public hearing be held to consider the applicant's proposal. Any request for a public hearing shall state, with particularity, the reason for the hearing, and must be based on issues that would warrant additional public review.

**ENDANGERED SPECIES:** The proposed project is within the range of the federally endangered Indiana bat (*Myotis sodalis*), least tern (*Sterna antillarum*), pallid sturgeon (*Scaphirynchus albus*) and the threatened Northern long-eared bat (*Myotis septentrionalis*) and the small whorled pogonia (*Isotria medeoloides*). A preliminary determination, in compliance with the Endangered Species Act as amended, has been made that the proposed activities are not likely to adversely affect species designated as threatened or endangered, or adversely affect critical habitat. However, in order to complete our evaluation, this public notice solicits comments from the U.S. Fish and Wildlife Service and other interested agencies and individuals.

**CULTURAL RESOURCES:** The St. Louis District will evaluate information provided by the State and Tribal Historic Preservation Officers, and the public, in response to this public notice. Additional reconnaissance surveys of the project area may be required if warranted.

**EVALUATION:** The decision whether to issue a permit will be based on an evaluation of the probable impact including cumulative impacts of the described activity on the public interest. That decision will reflect the national concern for both protection and utilization of important resources. The benefit that may reasonably be expected to accrue from the described activity must be balanced against its reasonably foreseeable detriments. All factors, which may be relevant to the activity described, will be considered including the cumulative effects. Among factors considered are: conservation; economics; aesthetics; general environmental concerns; wetlands; historic properties; fish and wildlife values; flood hazards; flood plain values; land use; navigation; shoreline erosion and accretion; recreation; water supply and conservation; water

quality; energy needs; safety; food and fiber production; mineral needs; consideration of property ownership; and in general the needs and welfare of the people.

**SOLICITATION OF COMMENTS:** The U.S. Army Corps of Engineers is soliciting comments from the public; Federal, state, and local agencies and officials; Indian Tribes; and other interested parties in order to consider and evaluate the impacts of the proposed activity. Any comments received will be considered by the U.S. Army Corps of Engineers to determine whether to issue, modify, condition or deny a permit for this proposal. To make this decision, comments are used to assess impacts on endangered species, historic properties, water quality, general environmental effects, and other public interest factors listed above. Comments are used in the preparation of an Environmental Assessment and/or an Environmental Impact Statement pursuant to the National Environmental Policy Act. Comments are also used to determine the need for a public hearing and to determine the overall public interest of the proposed activity.

In accordance with 33 CFR 325.3, it is presumed that all interested parties and agencies will wish to respond to public notices; therefore, a lack of response will be interpreted as meaning that there is no objection to the proposed project.

  
DANNY D. MCCLENDON  
Chief, Regulatory Branch

**NOTICE TO POSTMASTERS:**

It is requested that this notice be conspicuously and continually placed for 21 days from the date of this issuance of this notice.





© Copyright Hanson Professional Services Inc. 2017

Source: USGS Geospatial  
Data Gateway Jefferson  
County, Missouri USGS 7.5  
minute Quadrangle Map



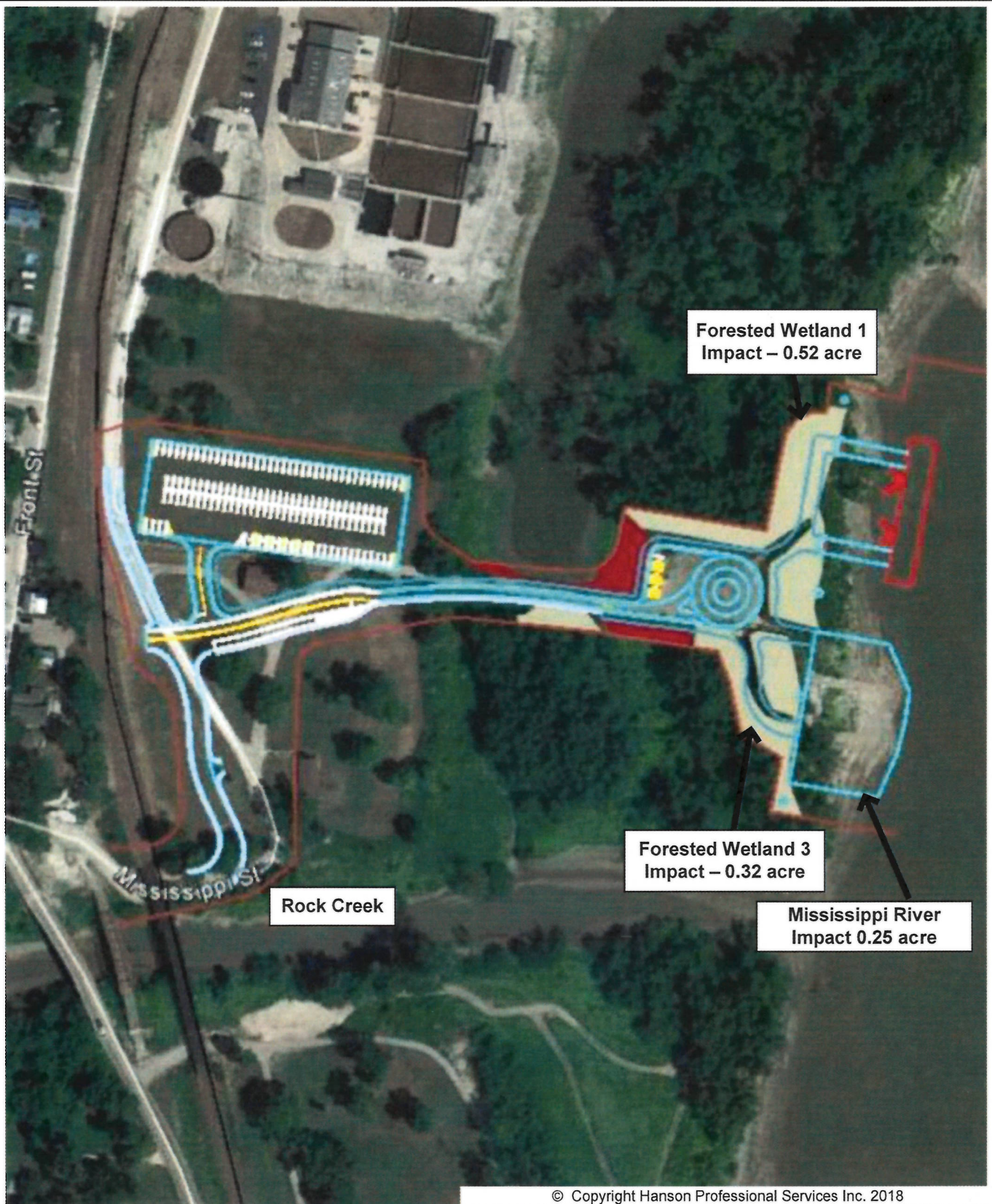
## USGS Topographic Map

Jefferson County Port Authority  
Kimmswick Riverfront Développement  
Jefferson County, Missouri

JOB NO. 15L0143

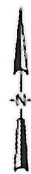
FIGURE 1





© Copyright Hanson Professional Services Inc. 2018

Source: Google Earth  
Photograph



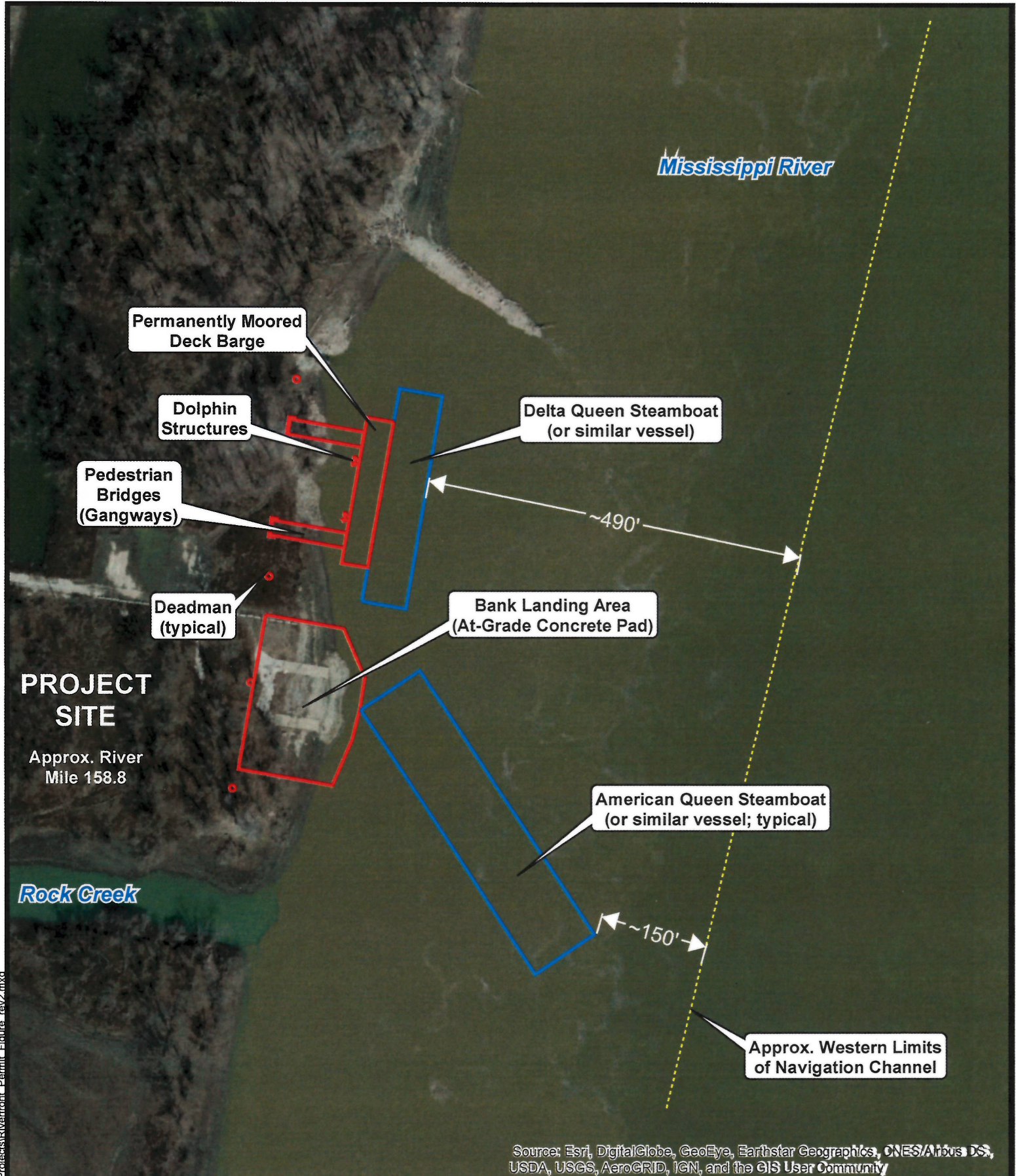
### Proposed Wetland Impacts

JEFFERSON COUNTY PORT AUTHORITY  
KIMMSWICK RIVERFRONT DEVELOPMENT  
JEFFERSON COUNTY, MISSOURI

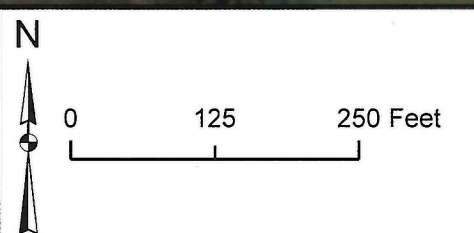
JOB NO. 15L0143

FIGURE 8





Source: Esri, DigitalGlobe, GeoEye, Earthstar Geographics, CNES/Airbus DS, USDA, USGS, AeroGRID, IGN, and the GIS User Community



| Proposed River Development   |          |
|--|----------|
| <b>JEFFERSON COUNTY PORT AUTHORITY</b><br><b>KIMMSWICK RIVERFRONT DEVELOPMENT</b><br><b>JEFFERSON COUNTY, MISSOURI</b> |          |
| 15L0143  | Figure 9 |

File: I:\15\jobs\15L0143\CAD\GIS\Projects\Riverfront\_Permit\_Figure\_rev2.mxd