



**US ARMY CORPS  
OF ENGINEERS  
St. Louis District  
Gateway to Excellence**

# Public Notice

Reply To:  
U.S. Army Corps of Engineers  
Attn: CEMVS-OD-F  
1222 Spruce Street  
St. Louis, MO 63103-2833

Public Notice No.

**P-2864**

Public Notice Date

**March 4, 2014**

Expiration Date

**Postmaster Please Post Conspicuously Until: March 24, 2014**

ORM Number: 2013-752

Comments on the described work should reference the U.S. Army Corps of Engineers Public Notice number shown above and must reach this office no later than the above expiration date to become part of the record and be considered in the decision. Comments should be e-mailed to [charles.f.freker@usace.army.mil](mailto:charles.f.freker@usace.army.mil) or mailed to the following address:

U.S. Army Corps of Engineers  
ATTN: CEMVS-OD-F ([Charles Freker](mailto:Charles.Freker@usace.army.mil))  
1222 Spruce Street  
St. Louis, Missouri 63103-2833

1. Continental Tire the Americas (CTA), Mr. Walker Gusewelle, 11525 North Highway 142, Post Office Box 1029, Mt. Vernon, Illinois 62864, (618) 246-2612, has applied to:

a. The U.S. Army Corps of Engineers, St. Louis District Regulatory Branch to place fill material into approximately 0.15 acre of scrub-shrub wetlands and 3.0 acres of wooded wetlands to construct two additional semi trailer parking lots on the north end of the existing tire manufacturing facility. The proposed CTA parking lots would be attached to existing semi trailer parking areas at the northern property limits for better logistics and continued traffic patterns at the existing warehouse. The additional parking is needed to add 408 semi trailer parking stalls with each stall measuring 12' x 55'. Approximately 55,672 square yards of pavement would be poured over rock substrate after cut and fill preparation activities are complete. Approximately 15,317 square yards of the proposed area is located in the scrub-shrub and wooded wetlands. CTA is investigating the purchase of wetland credits at a mitigation bank within the project service area. 17,063 square yards would be located in the designated 100-year floodplain. CTA needs the additional parking space to keep up with current production and demand. The plant is currently struggling to find places to park and cycle semi truck trailers for delivery, loading and unloading needs. The additional parking is also necessary to meet production and scheduling requirements. Alternative parking lot locations are limited due to the existing plant and existing parking areas that are confined by the Union Pacific Railroad to the West, Illinois Route 142 to the North, privately owned agriculture land to the east and existing facility access and infrastructure to the South. The proposed parking lots would be located in the Northeast ¼ of Section 5, Township 3 South, Range 3 East in Mt. Vernon, Jefferson County, Illinois. The wetlands are hydrologically connected to Casey Fork, which flows in the Big Muddy River, a primary tributary to the Mississippi River. (See Attached Figures).



b. To the Illinois Environmental Protection Agency (IEPA) for water quality certification, or waiver thereof, for the proposed activity in accordance with Section 401 of the Clean Water Act. Certification or waiver indicates that IEPA believes the activity will not violate applicable water quality standards. The review by the IEPA is conducted in accordance with the Illinois water quality standards under 35 Illinois Administrative Code Subtitle C. The water quality standards provide for the IEPA to review individual projects by providing an antidegradation assessment, which includes an evaluation of alternatives to any proposed increase in pollutant loading that may result from this activity. The "Fact Sheet" containing the antidegradation assessment for this proposed project may be found on the IEPA's web site, at [www.epa.state.il.us/public-notices/](http://www.epa.state.il.us/public-notices/). In the event that the IEPA is unable to publish the "Fact Sheet" corresponding to the timeframe of this Joint Public Notice, a separate public notice and "Fact Sheet" will be published by the IEPA at the web site identified above. You may also obtain a copy of the "Fact Sheet" by contacting the IEPA at the address or telephone number shown below. Written comments specifically concerning possible impacts to water quality should be addressed to: Illinois Environmental Protection Agency, Bureau of Water, Watershed Management Section, 1021 N. Grand Avenue East, P.O. Box 19276, Springfield, Illinois 62794-9276, with copy provided to the Corps of Engineers.

c. To the Illinois Department of Natural Resources, Office of Water Resources to evaluate the activity for state approval of the proposed work pursuant to an Act in Relation to the Regulation of the Rivers, Lakes and Streams of the State of Illinois (615 ILCS 5). Written comments concerning possible impacts to the waters of Illinois should be addressed to Illinois Department of Natural Resources, Office of Water Resources, One Natural Resources Way, Springfield, Illinois 62702-1271, with copy provided to the Corps. Inquiries may be directed to the Office of Water Resources at 217/782-3863.

2. Based on our initial processing of the applicants' proposal, the action is not expected to result in any significant adverse effects on the quality of the human environment. However, a final determination of the need for an environmental impact statement will not be made until the St. Louis District has completed its full review of this application. The review will include our evaluation of any written responses received as a result of this public notice.

3. This permit will be processed under the provisions of Section 404 of the Clean Water Act.

4. The applicant hired the consulting firm of American Resource Group, Ltd., to conduct a Phase I archaeological survey of an approximate 54.65-acre tract encompassing the general project area. The consultant submitted the results of the Phase I survey which located archaeological materials. However, the consultant determined the site(s) does (do) not meet requirements for National Register eligibility. Based on the Phase I results, the archaeological consultant recommended project clearance. The St. Louis District will also evaluate information provided by the State Historic Preservation Officer and the public in response to this public notice.

5. The proposed project is within the range of the federally endangered Indiana bat (*Myotis sodalis*) and the piping plover (*Charadrius melodus*). The applicant will follow any required tree clearing timeframes with the U.S. Fish and Wildlife Service to avoid potential impacts to the Indiana bat. A preliminary determination, in compliance with the Endangered Species Act as amended, has been made that this proposed activity is not likely to affect species designated as threatened or endangered, or adversely affect critical habitat. In order to complete our evaluation, comments are solicited by this public notice from the U.S. Fish and Wildlife Service and other interested agencies and individuals.

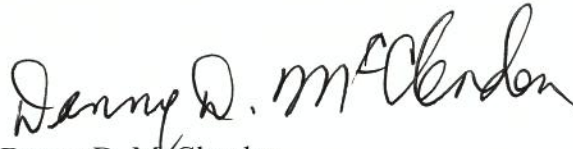


6. Interested parties, particularly navigation interests, Federal and state agencies for the protection of environmental and cultural resources, and the officials of any state, town, or local associations whose interest may be affected by this work, are invited to submit to this office written facts, arguments, or objections on or before **March 24, 2014**. The decision whether to authorize the activity will be based on an evaluation of the probable impact, including cumulative impacts of the proposed activity on the public interest. The decision will reflect the national concern for both protection and utilization of important resources. The benefits, which reasonably may be expected to accrue from the proposal, must be balanced against its reasonably foreseeable detriments. All factors which may be relevant to the proposal will be considered; among those are conservation, economics, aesthetics, general environmental concerns, wetlands, historic properties, fish and wildlife values, flood hazards, floodplain values, land use, navigation, shoreline erosion and accretion, recreation, water supply and conservation, water quality, energy needs, safety, food and fiber production, mineral needs, consideration of property ownership, and, in general, the needs and welfare of the people. Project authorization will be granted only if it is found not contrary to the public interest.

7. The Corps of Engineers is soliciting comments from the public; Federal, state, and local agencies and officials; and other interested parties in order to consider and evaluate the impacts of this proposed activity. Any comments received will be considered by the Corps of Engineers to determine whether to issue, modify, condition, or deny authorization for this proposal. To make this decision, comments are used to assess impacts on endangered species, historic properties, water quality, general environmental effects, and the other public interest factors listed above. Comments are also used to determine the overall public interest of the proposed activity.

8. Any person may request that a public hearing be held to consider the applicant's proposal, provided such request identifies significant issues that would warrant additional public review and comment. All replies to this public notice must be submitted in writing and sent to the U.S. Army Corps of Engineers, St. Louis District, 1222 Spruce Street, Attn: OD-F (Frerker), St. Louis, Missouri 63103-2833, or by electronic mail to [charles.f.frerker@usace.army.mil](mailto:charles.f.frerker@usace.army.mil), on or before **March 24, 2014**.

9. In accordance with 33 CFR 325.3, it is presumed that all interested parties and agencies will wish to respond to public notices; therefore, a lack of response will be interpreted as meaning that there is no objection to the proposed project.

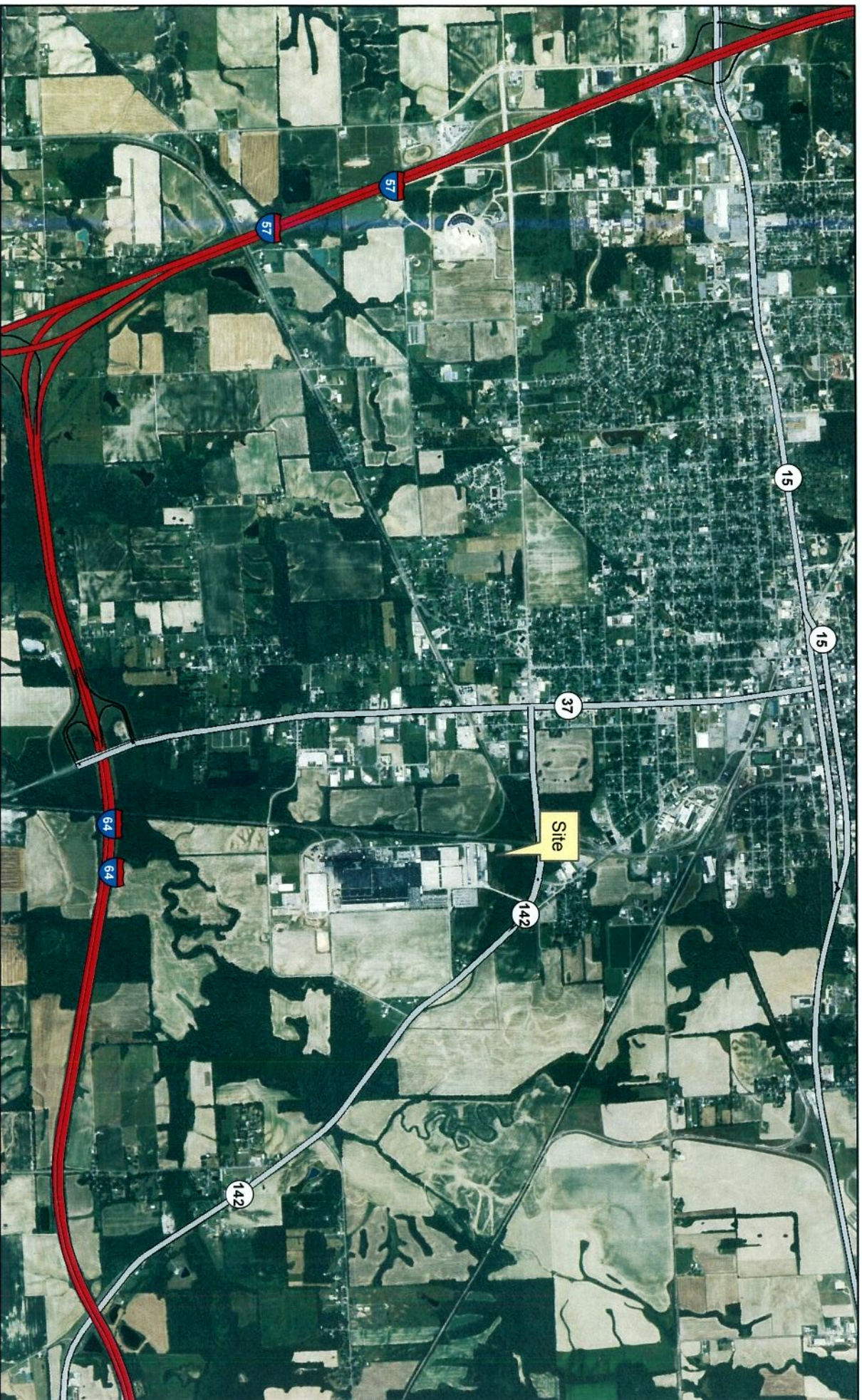
  
Danny D. McClendon  
Chief, Regulatory Branch

Attachments

NOTICE TO POSTMASTERS:

It is requested that this notice be conspicuously and continually posted for 21 days.





**P-2864**

**Location Map**

**Mt. Vernon, Jefferson County, Illinois**



**US Army Corps  
of Engineers®**  
St Louis District



## PUBLIC NOTICE EXHIBIT 'A' - WETLANDS

**Round Table Design**

INC.

ARCHITECTURE - PROFESSIONAL ENGINEERING - LAND SURVEYING

1020 MAIN STREET MT. VERNON, ILLINOIS (618) 244-7819

JOB NAME: NEW TRAILER PARKING LOT EXPANSION  
CONTINENTAL TIRE THE AMERICAS, MT. VERNON, IL

DRAWING TITLE: PUBLIC NOTICE

FILE NAME: 1122463\_(NAVDBB)\_PUBLIC NOTICE.DWG

DATE: 2-24-2014 APP. BY: KLP DWN BY: BLL PLOT SCALE: 1:1 JOB NUMBER: 1122463

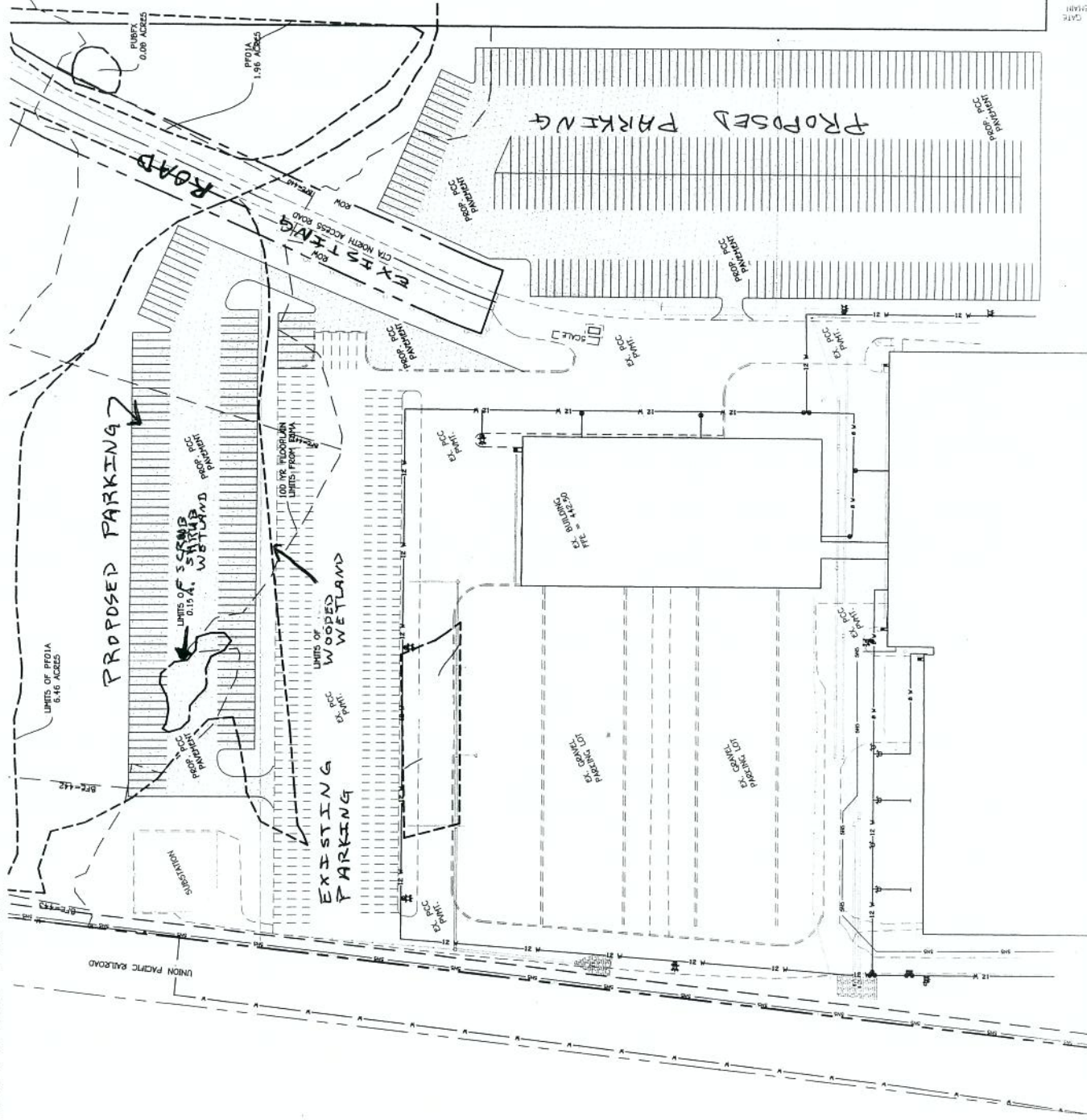
ILLINOIS PROFESSIONAL  
DESIGN FIRM  
NUMBER 184-001814

0 150' 300' 450' 600'

GRAPHIC SCALE  
1" = 300'-0"



# SITE LAYOUT PLAN



P-2864



GRAPHIC SCALE

REDUCED SIZE PLANS WILL NOT CONFORM TO STANDARD ENGINEERING SCALES. MULTIPLY ABOVE SCALE TIMES TWO (2).

### LEGEND

BOUNDARY LINE  
FENCE LINE  
RIGHT-OF-WAY  
EXISTING CONTOUR (HUNDREDS)  
PROPOSED CONTOUR (HUNDREDS)  
SANITARY SEWER LINE  
WATER LINE  
STORM SEWER LINE  
UNDERGROUND ELECTRIC  
OVERHEAD ELECTRIC  
IRON PIN FOUND  
IRON PIN SET  
BASS MARKER  
STONE CORNER POST  
CONCRETE MONUMENT  
TREE  
UTILITY POLE  
TELEPHONE PICTETAL  
STANDARD MANHOLE  
STS INLET / MANHOLE  
LIGHT POLE  
WATER METER  
WATER VALVE  
WATER VALVE  
FIRE HYDRANT