



US Army Corps
of Engineers
Kansas City District

STATE OF MISSOURI 2021 NATIONWIDE PERMIT REGIONAL CONDITIONS

For All Nationwide Permits

1. Stream Crossings. In addition to requirements of General Condition 2 and General Condition 9 of the Nationwide Permits, the following guidelines for stream crossings apply for regulated activities in waters of the United States (WOTUS). The guidelines are available at:

<https://www.nwk.usace.army.mil/Portals/29/docs/regulatory/NWP/2021/MO/MORC1Streams.pdf>

- Corps Districts may waive RC 1 when project site geomorphology (i.e. bedrock, gradient) or existing alterations (i.e. adjacent impoundment, as part of a dry detention basin) creates conflict with the guidelines. The applicant must provide Pre-construction Notification (PCN) to the District Engineer for any waiver request.

2. Seasonal Restrictions for Activities Proposed in Spawning Areas. In addition to the requirements of General Condition 3 of the Nationwide Permits, the following specific seasonal restrictions apply for regulated activities in WOTUS. Between the closed dates listed in the Missouri Combined Stream Spawning List, the permittee must not excavate from or discharge into the listed waters. The list of waters with seasonal restrictions is available on request from the Corps or at:

<https://www.nwk.usace.army.mil/Portals/29/docs/regulatory/NWP/2021/MO/MORC2SpawningArea.pdf>

- Corps Districts may waive RC 2 when the applicant demonstrates imminent threats to public safety and health, or to property. The Corps will consult with the U.S. Fish and Wildlife Service and Missouri Department of Conservation before granting the waiver and may add additional special conditions to protect aquatic life during the operation. The applicant must PCN to the District Engineer for any waiver request.

3. Suitable Material. In addition to the specific examples in General Condition 6 of the Nationwide Permits, the following materials are not suitable for fill activities in WOTUS: garbage, tires, treated lumber products that do not comply with the Registration Documents issued by the U.S. Environmental Protection Agency (USEPA) under the Federal Insecticide, Fungicide and Rodenticide Act (FIFRA) and that are not in accordance with standards issued by American Wood Protection Association of the International Code Council, liquid concrete not poured into forms, grouted riprap, bagged cement and sewage or organic waste.

- Broken concrete used as bank stabilization must be reasonably well graded, consisting of pieces varying in size from 20 pounds up to and including at least 150-pound pieces to withstand expected high flows. Applicants must break all large slabs to conform to the well graded requirement. Generally, the maximum weight of any piece should not be more than 500 pounds. Gravel and dirt should not exceed 15% of the total fill volume when using broken concrete as fill. All protruding reinforcement rods, trash, asphalt, and other extraneous materials must be removed from the broken concrete prior to placement in WOTUS.

4. Priority Watersheds. The applicant must provide PCN to the District Engineer for any regulated activity in a priority watershed. The list of priority watersheds requiring notification is available on request from the Corps or at:

<https://www.nwk.usace.army.mil/Portals/29/docs/regulatory/NWP/2021/MO/MORC4PriorityWaters.pdf>

5. Sensitive Aquatic Species. The applicant must provide PCN to the District Engineer for any regulated activity in waters listed at:

<https://www.nwk.usace.army.mil/Portals/29/docs/regulatory/NWP/2021/MO/MORC5AquaSpecies.pdf>.

The submitted PCN will be coordinated in accordance with General Condition 32(d) with the U.S. Fish and Wildlife Service as determined appropriate by the Corps.

For Specific Nationwide Permits:

6. Lake of the Ozarks. The applicant must provide a PCN to the District Engineer for any regulated activity associated with Nationwide Permit 12, 57, and 58 within Lake of the Ozarks. A copy of this notification must also concurrently be sent to Ameren Missouri. Nationwide Permits 29 and 44 are revoked in the Lake of the Ozarks. The Corps and Ameren Missouri, regardless of the request to use any Nationwide Permit, may verify the activity under the provisions of Regional General Permit 38M, which can be found at <https://www.nwk.usace.army.mil/Missions/Regulatory-Branch/General-Permits/>. Additional information on Ameren Missouri and Lake of the Ozarks permit requirements can be found at the following webpage: <https://www.ameren.com/missouri/residential/lake-of-the-ozarks/permitting-process-forms>.

=====
Note: PCN to the District Engineer must be in accordance with General Condition 32 of the Nationwide Permits.



General Guidelines for Stream Crossings Regional Condition 1

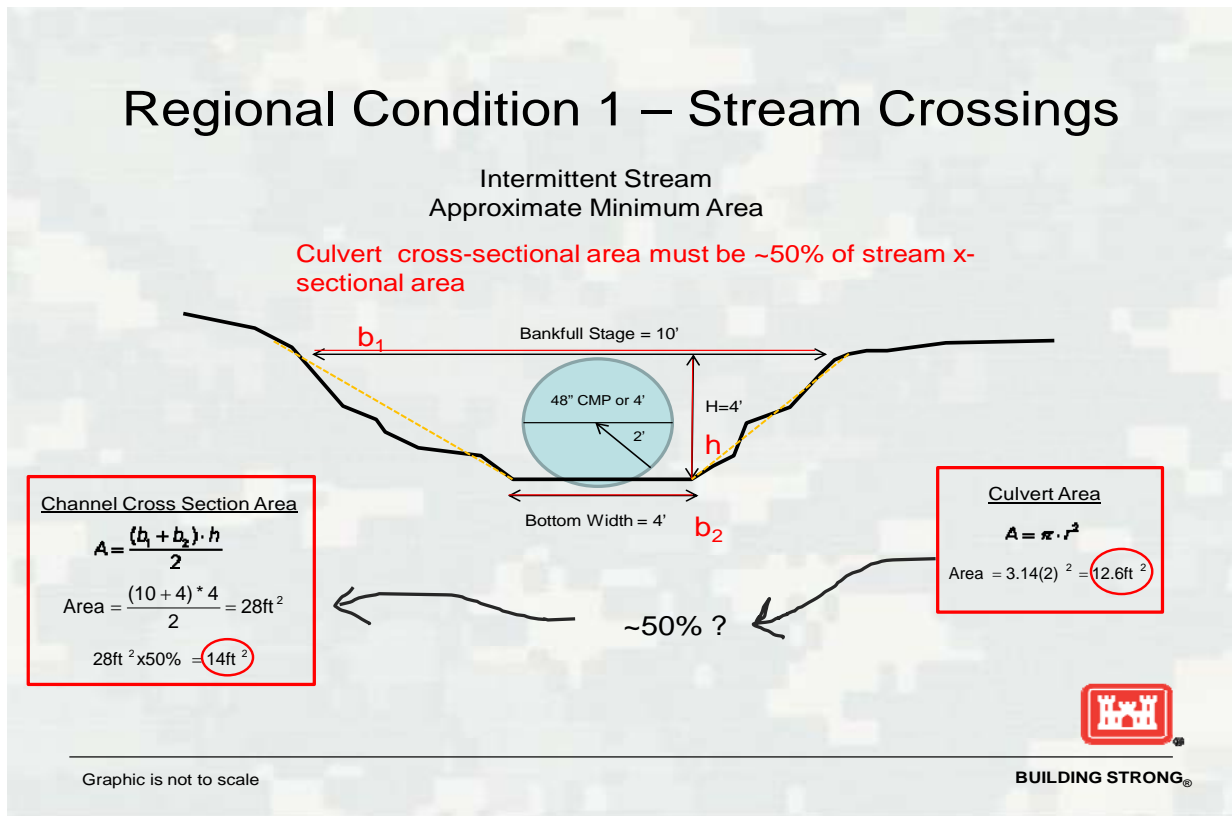
For all Nationwide Permits that involve the construction/installation of culverts and low water crossings, measures will be included in the construction, design, and installation that will allow for the passage of flows and promote the safe passage of fish and other aquatic organisms. The following General Guidelines are required to supplement General Condition (2) Aquatic Life Movements and General Condition (9) Management of Water Flows.

Culverts:

- New or replacement culverts (e.g., box or tubular, pipes, etc.) must be designed, sized, and placed correctly. Culverts perched above the grade of the stream are not allowed. This includes other in-stream structures placed at the inlet with the purpose to reduce sedimentation within the stream crossing. It is acceptable for a portion of the water to pass over the structure if it is designed to be overtopped. Culverts must be the shortest length necessary to meet the project purpose, and a single culvert is encouraged.
- Drop boxes or other structures placed at the inlet with the purpose to reduce sedimentation within the stream crossing are not allowed. Culvert must be the shortest length necessary to meet the project purpose.
- New or replacement culverts, in conjunction with the associated fill material, shall have an appropriately sized opening that allows water flow through and over the crossing that is relative to the bankfull area (See Image 1). For purposes of this regional condition, bankfull area is defined as the height and width of the stream channel within the project to the top of the high bank(s). In addition, if elevations differ on both sides of the stream the lowest elevation shall be used as the height. The following basic guidelines shall be used when designing new or replacement crossing projects:

Stream Type	% of crossing profile that shall remain open
Perennial	Designed to allow an 85% opening to include the culvert(s) and area above the crossing up to the bankfull area.
Intermittent	Designed to allow a 50% opening to include the culvert(s) and area above the crossing up to the bankfull area.
Ephemeral	Placed at a depth below or at the natural stream bottom to provide for passage during low flow conditions.

Image 1



- For permanent crossings, the culvert must be embedded and backfilled below the grade of the stream on both the upstream and downstream sides ≥ 1 foot for culverts >48 inches. On culverts ≤ 48 inches the bottom of the culvert must be placed at a depth below or at the natural stream bottom to provide for aquatic organism passage during low flow conditions. Culverts in streams with non-erodible beds (i.e. bedrock or stable clay) must be constructed flush with the stream bed, but do not need to be embedded. Culverts in streams with highly erodible beds must be embedded deeper to lessen the chance of future perching due to downstream degradation and may be accompanied with other grade control measures to prevent erosion while maintaining General Condition (2) Aquatic Life Movements.

Low Water Crossings:

- The applicant must notify the District Engineer when repairing, rehabilitating or replacing low water crossings when discharges of dredged or fill material would raise or lower the lowest elevation of the crossing.
- When replacing or removing low water crossings the applicant must propose and employ measures to mitigate for and minimize the potential of streambed headcutting where channel incision has occurred downstream of the structure and the structure is providing grade control that is preventing channel incision from migrating upstream.



US Army Corps
of Engineers
Kansas City District

Missouri Regional Condition #2 to Nationwide Permits Seasonal Restrictions for Activities Proposed in Fish Spawning Areas March 2021

ID	Stream Name	Downstream Boundary (From)	Upstream Boundary (To)	Closure Period	Listing Criteria	Length (Miles)	County
1	Baker Branch	the tributary (Unnamed Creek ⑦) confluence immediately downstream of CR-SW 1075	the upstream MDC boundary (Taberville Prairie CA)	15 May - 15 July	2,4,5	4.4	St. Clair
2	Barren Fork ①	its mouth (confluence with Tavern Creek)	MO-17	15 March - 15 June	2,4	2.9	Miller
3	Barren Fork ②	its mouth (confluence with Sinking Creek)	CR-A-D	15 Nov. - 15 Feb.	6	3.4	Shannon
4	Bass Creek	its mouth (confluence with Turkey Creek)	US-63	15 May - 15 July	2,5,7	4.4	Boone
5	Bear Creek	RT-A	the south section line (6, 33N, 24W)	15 March - 15 June	2,4	10.5	Cedar, Polk
6	Beaver Creek	Bull Shoals Lake (654' AMSL)	MO-76	15 March - 31 July	2,4	24.3	Taney
7	Big Buffalo Creek	Lake of the Ozarks (660' AMSL)	its headwaters	1 April - 30 June	2,5	10.8	Benton, Morgan
8	Big Cane Creek	the Missouri-Arkansas border	its source (convergence of Cane Creek & Little Cane Creek)	1 March - 15 June	2,7	4.2	Butler
9	Big Creek	its mouth (confluence with St. Francis River)	MO-143	15 March - 15 June	5,6	12.3	Wayne, Iron
10	Big Piney River	its mouth (confluence with Gasconade River)	MO-17	15 March - 15 June	2,4,6,7	84.8	Pulaski, Phelps, Texas
11	Big River	its mouth (confluence with Meramec River)	the upstream MDC boundary (Leadwood Access)	15 March - 15 June	2,6	108.4	Jefferson, Washington, St. Francois
12	Black River ①	the Missouri-Arkansas border	Clearwater Dam	1 Feb. - 15 June	2,4,6,7	91.8	Butler, Wayne
13	Black River ②	Clearwater Lake (498' AMSL)	its source (convergence of West Fork Black River & East Fork Black River)	1 April - 31 July	2,4	27	Reynolds
14	Blue River	the Missouri-Kansas border	RT-W (Bannister RD)	1 April - 30 June	4,7	10.8	Jackson
15	Blue Spring Branch	its mouth (confluence with Bois Brule Creek)	RT-M	1 Dec. - 31 March	2	6.3	Perry
16	Blue Springs Branch	its mouth (confluence with Blue Springs Creek)	its source (Blue Springs)	15 Nov. - 15 Feb.	6	0.2	Crawford
17	Blue Springs Creek	its mouth (confluence with Meramec River)	the confluence of Blue Springs Branch	15 Nov. - 15 Feb.	5,6	4.3	Crawford
18	Bonne Femme Creek	CR-Andrew Sapp RD	US-63	15 May - 15 July	2,5,7	9.8	Boone
19	Bourbeuse River	its mouth (confluence with Meramec River)	the confluence of Clear Creek	15 March - 15 June	2,4	139.6	Franklin, Crawford, Gasconade, Phelps
20	Brush Creek ①	its mouth (confluence with Shoal Creek)	its headwaters	15 March - 15 June	2,4,5	8.4	Caldwell
21	Brush Creek ②	its mouth (confluence with Sac River)	the south section line (6, 35N, 24W)	15 March - 15 June	1,2	13.8	St. Clair, Cedar, Polk
22	Brushy Fork	its mouth (confluence with Barren Fork)	MO-17	15 March - 15 June	2,4	2	Miller
23	Cahoonie Creek	its mouth (confluence with Thomas Creek)	the west section line (3, 36N, 20W)	15 March - 15 June	2,4	2.8	Dallas, Hickory
24	Cane Creek ①	its mouth (convergence with Little Cane Creek & source of Big Cane Creek)	the north section line (11, 22N, 5E)	1 Feb. - 15 June	2	5.5	Butler

25	Cane Creek ②	MO-158	the confluence of Tenmile Creek	1 Feb. - 15 June	2	14.2	Butler
26	Castor River	its mouth (confluence with Castor River Diversion Channel)	CR-208	1 Feb. - 31 May	2,4	59.8	Bollinger, Wayne, Madison
27	Chariton River	US-136	the Missouri-Iowa border	1 March - 30 April	2,4,5,7	19	Schuyler, Putnam
28	Cinque Hommes Creek	the confluence of Bois Brule Creek	US-61	1 Dec. - 31 March	2	11.5	Perry
29	Clear Creek ①	its mouth (confluence with Fishing River)	RT-W	1 June - 31 August	2	23.2	Clay, Clinton
30	Clear Creek ②	its mouth (confluence with Lamine River)	its headwaters	15 May - 15 July	2	12.7	Cooper
31	Courtois Creek	its mouth (confluence with Huzzah Creek)	MO-8	15 March - 15 June	4,5,6	15.8	Crawford
32	Crabapple Creek	its mouth (confluence with Shoal Creek)	its headwaters	15 March - 15 June	2,4,5	9.3	Caldwell
33	Crane Creek	Quail Spur RD	CR-1240	15 Nov. - 15 Feb.	6	10	Stone, Lawrence
34	Crooked River	MO-10	its headwaters	15 March - 15 June	2,4	65.5	Ray, Caldwell, Clinton
35	Culley Creek	its mouth (confluence with Moniteau Creek)	the north section line (14, 46N, 17W)	15 May - 15 July	2	1.9	Cooper
36	Current River	the Carter-Ripley county line (downstream NPS boundary (Ozark National Scenic Riverways))	its source (convergence of Pigeon Creek & Montauk Spring Branch)	15 March - 15 June	2,5,6	112	Carter, Shannon, Texas, Dent
37	Des Moines River	its mouth (confluence with Mississippi River)	US-27	1 March - 15 June	2	14.8	Clark
38	Dousinbury Creek	its mouth (confluence with Niangua River)	RT-JJ	15 March - 15 June	2	0.8	Dallas
39	Draffen Branch	its mouth (confluence with Moniteau Creek)	CR-Harned RD	15 May - 15 July	2	3.3	Cooper
40	Dry Fork	its mouth (confluence with Meramec River)	MO-8	15 Nov. - 15 Feb.	6	5.8	Crawford, Phelps
41	East Fork Big Creek	its mouth (convergence with West Fork Big Creek & source of Big Creek)	the Missouri-Iowa border	15 March - 15 June	2,4	39.5	Harrison
42	East Fork Crooked River	its mouth (confluence with Crooked River)	its headwaters	15 May - 15 July	2,4	32.2	Ray, Caldwell
43	East Fork Niangua River	its mouth (convergence with West Fork Niangua River and source of Niangua River)	the south section line (33, 32N, 18W)	15 March - 15 June	2,4	0.6	Webster
44	Eleven Point River	the Missouri-Arkansas border	the Middle Fork Eleven Point River confluence	15 March - 15 June	5,6	54.4	Oregon
45	Elk River	the Missouri-Oklahoma border	its source (convergence of Big Sugar Creek & Little Sugar Creek)	15 March - 15 June	4,6	24.7	McDonald
46	Fiery Fork	its mouth (confluence with Little Niangua River)	the tributary confluence immediately upstream of CR-7-17H (Fiery Fork RD)	15 March - 15 June	2	3.6	Camden
47	First Nicholson Creek (East Drywood Creek)	the downstream MDNR boundary (Prairie State Park)	the most upstream crossing of CR-West Central RD	15 March - 15 June	4,5,7	4.1	Barton
48	Flat Creek	Table Rock Lake (915' AMSL)	MO-39	15 March - 15 June	2	16.1	Stone, Barry
49	Fleck Creek	the downstream MDNR boundary (Prairie State Park)	the first tributary (Unnamed Creek ⑧) confluence upstream	15 March - 15 June	4,7	1	Barton
50	Fourmile Creek	its mouth (confluence with Niangua River)	RT-P	15 March - 15 June	2	0.8	Dallas

51	Gans Creek	its mouth (convergence with Clear Creek & source of Little Bonne Femme Creek)	US-63	15 March - 15 June	5,7	5.4	Boone
52	Gasconade River	its mouth (confluence with Missouri River)	MO-5	15 March - 15 June	2,4,6,7	289.9	Gasconade, Osage, Maries, Phelps, Pulaski, Laclede, Wright
53	Grand River	its mouth (confluence with Missouri River)	the Thompson River confluence	1 March – 15 June	2,4	61.3	Carroll, Chariton, Livingston
54	Greasy Creek	its mouth (confluence with Niangua River)	the south section line (34, 33N, 20W)	15 March - 15 June	2,4	14.2	Dallas
55	Greer Spring Branch	its mouth (confluence with Eleven Point River)	its source (Greer Spring)	15 Nov. - 15 Feb.	4,6	1.4	Oregon
56	Grindstone Creek	its mouth (confluence with Grand River)	its headwaters	15 May - 15 July	2,4	42.5	Daviess, DeKalb, Clinton
57	Hickory Creek ①	MO-6	its headwaters	15 May - 15 July	2	8.6	Grundy, Daviess
58	Hickory Creek ②	its mouth (confluence with Shoal Creek)	CR-Monark DR	15 Feb. - 15 July	2	7.6	Newton
59	High Creek	the confluence of McElroy Creek	its headwaters	1 June - 31 August	2	10.7	Atchison
60	Howard Creek	its mouth (confluence with Smiley Creek)	its headwaters	15 May - 15 July	2	4.1	Cooper, Moniteau
61	Huzzah Creek	its mouth (confluence with Meramec River)	CR-Willhite RD	15 March - 15 June	4,5,6	35.8	Crawford
62	Jack Buster Creek	its mouth (confluence with Saline Creek)	RT-MM	15 March - 15 June	2	3.6	Miller
63	Jack's Fork	its mouth (confluence with Current River)	its source (convergence of North Prong Jack's Fork & South Prong Jack's Fork)	15 March - 15 June	5,6	46.7	Shannon, Texas
64	James River	Table Rock Lake (915' AMSL)	Lake Springfield Dam	15 March - 15 June	2,6	51.1	Stone, Christian, Greene
65	Joachim Creek	RT-A	RT-V	15 March - 15 June	6	18.3	Jefferson
66	Jones Creek	its mouth (confluence with Niangua River)	CR-Jones Creek RD	15 March - 15 June	2	0.3	Dallas
67	Kelley Branch	its mouth (confluence with Silver Fork)	RT-U	15 March - 15 July	2,4,7	6.6	Boone
68	Kenser Creek	its mouth (confluence with Tavern Creek)	MO-42	15 March - 15 June	2	0.3	Miller
69	La Barque Creek	its mouth (confluence with Meramec River)	its headwaters	15 March - 15 June	4,7	6.2	Jefferson
70	Lane Spring Branch	its mouth (confluence with Little Piney Creek)	its source (Lane Spring)	15 Nov. - 15 Feb.	6	0.2	Phelps
71	Little Black River	the east section line (25, 24N, 3E)	its source (convergence of North Prong Little Black River & South Prong Little Black River)	15 March - 15 June	2,4,5	8.6	Ripley
72	Little Maries Creek	its mouth (confluence with Maries River)	the south section line (33, 43N, 10W)	15 March - 15 June	2	3.4	Osage
73	Little Niangua River	Lake of the Ozarks (660' AMSL)	the east section line (26, 36N, 19W)	15 March - 15 June	1,2,4,7	46.8	Camden, Hickory, Dallas
74	Little Piney Creek	the confluence of Beaver Creek	the Phelps-Dent county line	15 Nov. - 15 Feb.	2,5,6	15.1	Phelps
75	Little Pomme de Terre River	its mouth (confluence with Pomme de Terre River)	US-65	15 March - 15 June	2	9.5	Polk, Greene
76	Little Saline Creek	its mouth (confluence with Saline Creek)	its headwaters	15 March - 15 June	2	9.8	Miller
77	Little Wilson Creek	its mouth (confluence with Pomme de Terre River)	CR-244 th ST	15 March - 15 June	2	2.1	Polk
78	Locust Creek	MO-6	US-136	1 March - 30 April	2,4,7	36.5	Sullivan, Putnam

79	Log Creek	its mouth (confluence with Shoal Creek)	its headwaters	15 March - 15 June	2,4,5	14.7	Caldwell
80	Lost Creek	the Missouri-Oklahoma border	RT-CC	1 May - 31 July	2	7.1	Newton
81	Macks Creek	its mouth (confluence with Little Niangua River)	Coffey Hollow RD	15 March - 15 June	2	2.2	Camden
82	Maries River	its mouth (confluence with Osage River)	the south section line (26, 41N, 10W)	15 March - 15 June	2	37.4	Osage, Maries
83	Maze Creek	Stockton Lake (867' AMSL)	CR-231	15 March - 15 June	2	4	Dade
84	McElroy Creek	its mouth (confluence with High Creek)	the Missouri-Iowa border	1 June - 31 August	2	6.6	Atchison
85	Meramec River ①	CR-Thurman Lake RD (upstream boundary of Scott's Ford Access)	MO-8	15 Nov. - 15 Feb.	6	8.8	Crawford, Phelps
86	Meramec River ②	its mouth (confluence with Mississippi River)	MO-19	15 March - 15 June	2,4,5,6	205.8	St. Louis, Jefferson, Franklin, Crawford, Dent
87	Meyers Branch	its mouth (confluence with Tavern Creek)	its headwaters	1 May - 31 July	2,7	2.5	Callaway
88	Mill Creek ①	MO-111	its headwaters	15 March - 15 June	2,4	9.7	Atchison
89	Mill Creek ②	its mouth (confluence with Little Piney Creek)	the confluence of Deep Hollow Creek	15 Nov. - 15 Feb.	5,6	9.3	Phelps
90	Mill Creek ③	its mouth (confluence with Wet Glaize Creek)	MO-7	15 March - 15 June	7	4.9	Camden
91	Mineral Fork	its mouth (confluence with Big River)	RT-F	15 March - 15 June	4,6	14.9	Washington
92	Mississippi River	the Missouri River confluence	Mel Price Lock & Dam	1 April - 15 June	2	5.6	St. Charles
93	Moniteau Creek	MO-87	its headwaters	15 March - 15 July	2	30.9	Moniteau, Cooper
94	Niangua River	Lake of the Ozarks (660' AMSL)	its source (convergence of East Fork Niangua River & West Fork Niangua River)	15 March - 15 June	1,2,7	109	Camden, Dallas, Laclede, Webster
95	North Dry Sac River	its mouth (confluence with Little Sac River)	the east section line (19, 31N, 21W)	15 March - 15 June	2,4	9.2	Polk, Greene
96	North Fork River	Norfork Lake (554' AMSL)	the Ozark-Douglas county line	15 Nov. - 15 Feb.	4,5,6	23.9	Ozark
97	North Little Tavern Creek	its mouth (confluence with Tavern Creek)	the Miller-Maries county line	15 March - 15 June	2	3.3	Miller
98	Osage Fork of the Gasconade River	its mouth (confluence with Gasconade River)	RT-F	15 March - 15 June	2,6,7	68.6	Laclede, Wright, Webster
99	Osage River	its mouth (confluence with Missouri River)	Bagnell Dam	15 March - 15 June	2,4,7	85.6	Cole, Osage, Miller
100	Panther Creek	its mouth (confluence with Brush Creek)	the St. Clair-Polk county line	15 March - 15 June	2	2.5	St. Clair
101	Piney Spring Branch	its mouth (confluence with Little Piney Creek)	its source (Piney Spring)	15 Nov. - 15 Feb.	6	0.2	Phelps
102	Pisgah Creek	its mouth (confluence with Moniteau Creek)	RT-W	15 May - 15 July	2	8.1	Cooper
103	Pomme de Terre River ①	Pomme de Terre Reservoir (839' AMSL)	RT-D	15 March - 15 June	4	12.4	Polk
104	Pomme de Terre River ②	E 475 th RD	the first tributary confluence upstream of CR-Arrow Head RD	15 March - 15 June	1,2,4	31.8	Polk, Dallas, Greene, Webster
105	Roubidoux Creek ①	the north section line (10, 34N, 12W)	MO-32	15 March - 15 June	2	24.4	Pulaski, Texas
106	Roubidoux Creek ②	its mouth (confluence with Gasconade River)	the upstream MDC boundary (Roubidoux Creek CA)	15 Nov. - 15 Feb.	6	2.2	Pulaski

107	Sac River ①	from Harry S. Truman Reservoir (706' AMSL)	the west section line (14, 36N, 26W)	1 March - 1 June	4	3.2	St. Clair
108	Sac River ②	Stockton Lake (867' AMSL)	CR-34	15 March - 15 June	4	13	Dade, Green
109	Saint Francis River ①	the Missouri-Arkansas border	Wappapello Dam	1 Feb. - 31 June	2,4	113	Dunklin, Butler, Stoddard, Wayne
110	Saint Francis River ②	Wappapello Lake (355' AMSL)	MO-72	1 Feb. - 31 May	2,4,6	63.2	Wayne, Madison
111	Saline Creek	its mouth (confluence with Osage River)	US-54	15 March - 15 June	2	13.1	Miller
112	Salt Creek	its mouth (confluence with Missouri River)	its headwaters	1 June - 31 August	2,7	5.9	Howard
113	Shoal Creek	RT-D	its headwaters	15 May - 15 July	2,4,5	74.8	Livingston, Caldwell, Clinton
114	Silver Fork	US-63	RT-V	15 March - 15 July	2,4,7	9.6	Boone
115	Smiley Creek	its mouth (confluence with Moniteau Creek)	its headwaters	15 May - 15 July	2	8.2	Cooper, Moniteau
116	South Fabius River	US-24/US-61	the Marion-Shelby county line	15 March - 15 June	4,7	42.1	Marion
117	South Fork Pomme de Terre River	its mouth (confluence with Pomme de Terre River)	CR-J RD	15 March - 15 June	2	3.7	Greene, Webster
118	South Fork Turkey Creek	its mouth (convergence with North Fork Turkey Creek & source of Turkey Creek)	RT-H	15 March - 15 July	2,7	2.7	Boone
119	South Little Tavern Creek	its mouth (confluence with Tavern Creek)	the confluence of Atwell Creek	15 March - 15 June	2,4	1.6	Miller
120	South Prong Little Black River	its mouth (convergence with North Prong Little Black River & source of Little Black River)	MO-21	15 March - 15 June	2,4,5	5.5	Ripley
121	Spring Creek	its mouth (confluence with Big Piney River)	the confluence of Bradford Branch	15 Nov. - 15 Feb.	5,6	7.9	Phelps
122	Spring River ①	RT-H	US-60	15 Nov. - 15 Feb.	2,4	14.1	Lawrence
123	Spring River ②	the Missouri-Kansas border	MO-43	15 April - 15 July	2,4	12.3	Jasper
124	Starks Creek	its mouth (confluence with Little Niangua River)	the north section line (22, 38N, 20W)	15 March - 15 June	2	2.2	Hickory
125	Sugar Creek ①	MO-146	its headwaters	15 March - 15 July	2,4	25.7	Grundy, Harrison
126	Sugar Creek ②	its mouth (confluence with Cuivre River)	RT-B	15 March - 15 June	4,5,7	13.5	Lincoln
127	Swan Creek	Bull Shoals Lake (654' AMSL)	the upstream USACE boundary	15 March - 15 June	2	4.6	Taney
128	Tavern Creek ①	its mouth (confluence with Missouri River)	its headwaters	1 May - 31 July	2,7	8.4	Callaway
129	Tavern Creek ②	its mouth (confluence with Osage River)	Bennett RD	15 March - 15 June	1,2,4	43.8	Miller
130	Tenmile Creek	its mouth (confluence with Cane Creek)	RT-B	15 March - 15 June	6	15.4	Butler, Carter
131	Thomas Creek	its mouth (confluence with Little Niangua River)	CR-Howard Chapel RD	15 March - 15 June	2,4	8.7	Hickory, Dallas
132	Thompson River	the south section line (11, 66N, 26W)	the Missouri-Iowa border	15 March - 15 June	2,4	6.9	Harrison
133	Tombstone Creek	its mouth (confluence with Sugar Creek)	its headwaters	15 May - 15 July	2,4	10.9	Harrison, Daviess
134	Turkey Creek	its mouth (confluence with Boone Femme Creek)	its source (convergence of North Fork Turkey Creek & South Fork Turkey Creek)	15 March - 15 July	2,5,7	7.2	Boone
135	Turnback Creek	Stockton Lake (867' AMSL)	the Old Dilday Mill Dam	15 March - 15 June	4	13.4	Dade

136	Unnamed Creek ①	its mouth (confluence with Sugar Creek)	its headwaters	15 May - 15 July	2	5	Harrison
137	Unnamed Creek ②	its mouth (confluence with Sugar Creek)	its headwaters	15 May - 15 July	2	5.9	Harrison
138	Unnamed Creek ③	its mouth (confluence with Moniteau Creek)	its headwaters	15 May - 15 July	2	3.9	Cooper
139	Unnamed Creek ④	its mouth (confluence with Bass Creek)	the south section line (33, 47N, 12W)	15 May - 15 July	2	1.8	Boone
140	Unnamed Creek ⑤	its mouth (confluence with Baker Branch)	its headwaters	15 May - 15 July	2,4	0.9	St. Clair
141	Unnamed Creek ⑥	its mouth (confluence with Baker Branch)	its headwaters	15 May - 15 July	2,4	3.5	St. Clair
142	Unnamed Creek ⑦	its mouth (confluence with Baker Branch)	its headwaters	15 May - 15 July	2,4	2.7	St. Clair
143	Unnamed Creek ⑧	its mouth (confluence with Fleck Creek)	CR-West Central RD	15 March - 15 June	4,7	2.5	Barton
144	Weaubleau Creek	the downstream MDC boundary (Kings Prairie Access)	the St. Clair-Hickory county line	15 May - 15 July	2,4	14	St. Clair
145	West Brush Creek	its mouth (confluence with Moniteau Creek)	RT-O	15 March - 15 July	2	3.4	Cooper, Moniteau
146	West Fork Big Creek	its mouth (convergence with East Fork Big Creek & source of Big Creek)	the Missouri-Iowa border	15 March - 15 June	2,4	38.7	Harrison
147	West Fork Crooked River	its mouth (confluence with Crooked River)	its headwaters	15 May - 15 July	2,4	21.5	Ray
148	West Fork Niangua River	its mouth (convergence with East Fork Niangua River & source of Niangua River)	the south section line (33, 32N, 18W)	15 March - 15 June	2	0.3	Webster
149	West High Creek	its mouth (confluence with High Creek)	the Missouri-Iowa border	1 June - 31 August	2	6.2	Atchison
150	Wet Glaize Creek	its mouth (convergence with Dry Auglaize Creek & source of Grand Glaize Creek)	the confluence of Mill Creek	15 March - 15 June	7	6.6	Camden
151	Whetstone Creek	its mouth (confluence with Loutre River)	I-70	15 March - 15 June	2,4,5,7	17.7	Montgomery, Callaway
152	Whitewater River	its mouth (confluence with Castor River Diversion Channel)	RT-K	1 Feb. - 31 May	2,7	40.7	Cape Girardeau, Bollinger
153	Wilkins Spring Branch	its mouth (confluence with Mill Creek)	its source (Wilkins Spring)	15 Nov. - 15 Feb.	6	0.2	Phelps



US Army Corps
of Engineers
Kansas City District

Priority Waters

Stream Reach Name	Tributary Reaches Included	Counties
Belle Fountain Ditch		Dunklin, Pemiscot
Big Muddy Creek		Gentry
Big Piney River		Phelps, Pulaski, Texas
Big River	Mineral Fork	Jefferson, St. Francois, Washington
	Cedar Creek	
Black River	Cane Creek	Butler, Wayne
Bourbeuse River	Dry Fork	Franklin, Gasconade, Phelps
Bryant Creek		Douglas, Ozark
Center Creek		Jasper
Courtois Creek		Crawford, Washington
Cuivre River	Elkhorn Creek	Audrain, Lincoln, Montgomery, Pike
	Bear Creek	
	Camp Creek	
	North Fork Cuivre River	
	Indian Creek	
	West Fork Cuivre River	
Current River	Big Creek	Carter, Dent, Ripley, Shannon, Texas
	Spring Valley Creek	
	Sinking Creek	
Dry Fork		Dent, Phelps
Eleven Point River	Frederick River	Oregon
	Hurricane Creek	
	Spring Creek	
Elk River		McDonald
Gasconade River	Osage Fork	Gasconade, Laclede, Maries, Osage, Pulaski, Wright
	Beaver Creek	

Haw Creek		Morgan, Benton
Huzzah Creek		Crawford
Jacks Fork		Shannon, Texas
Joachim Creek		Jefferson
Little Black River		Butler, Ripley
Little Creek		Harrison
Little Dry Wood Creek		Vernon
Little Niangua River		Camden, Hickory
Little Platte River		Clinton
Little River		Dunklin
Locust Creek	West Locust Creek East Locust Creek	Chariton, Linn, Livingston, Putnam, Sullivan
Main Ditch		Pemiscot
Maries River		Maries, Osage
Marrowbone Creek		Daviess
Meramec River		Crawford, Dent, Franklin, Jefferson, St. Louis
Moniteau Creek		Cooper, Moniteau
Moreau River		Cole, Moniteau
Niangua River	Greasy Creek	Camden, Dallas, Webster
North Fork River	Spring Creek	Ozark
Osage River		Miller, Cole, Osage
Peno Creek		Pike

Pomme de Terre River		Dallas, Greene, Polk
Pomme de Terre River		Benton, Hickory
Sac River		Greene, Polk
Sac River		Cedar, St. Clair
Saint Francis River	Mingo Ditch	Butler, Dunklin, Madison,
	Lick Creek	
Saint Johns Diversion Ditch		New Madrid
Shoal Creek (NE)		Putnam
Shoal Creek (SW)		Newton
South Fabius River	Little Fabius River	Knox, Lewis, Marion, Shelby
	North Fork	
	South Fork	
Spring Creek		Adair, Sullivan
Spring River	North Fork	Barton, Jasper, Lawrence
Sugar Creek		Grundy, Harrison
Tavern Creek		Miller
Whetstone Creek		Callaway, Montgomery
Yellow Creek	East Yellow Creek	Chariton, Linn, Sullivan
	West Yellow Creek	



US Army Corps
of Engineers
Kansas City District

Sensitive Aquatic Species Waters Regional Condition 5

Sensitive Aquatic Species: Includes all mussel and hellbender species with a Federal status, including Endangered, Threatened, Proposed Endangered (published in Federal Register).

Curtis Pearlymussel (E)

Pink mucket (E)

Higgins Eye (E)

Scaleshell (E)

Fat pocketbook (E)

Winged mapleleaf (E)

Spectaclecase (E)

Sheepnose (E)

Snuffbox (E)

Neosho mucket (E)

Rabbitsfoot (E)

Ozark Hellbender (E)

1. **Belle Fountain/State Line Ditch** – from the Route NN Bridge on the border of Pemiscot and Dunklin Counties, to the Missouri (Dunklin County)-Arkansas (Mississippi County) border, including all portions of the waterbody that make up the border between Missouri and Arkansas.
2. **Big Piney River** – from the confluence of Arthur Creek in Texas County to its confluence with the Gasconade River in Pulaski County.
3. **Big River** – from confluence of Belews Creek in Jefferson County to its confluence with the Meramec River in Jefferson/St. Louis Counties.
4. **Black River** – from the point of discharge from Clearwater Dam in Wayne County to the Missouri (Butler County)-Arkansas (Clay County) border in Butler County.
5. **Bourbeuse River** – from the confluence of Clear Creek in Phelps County to its confluence with the Meramec River in Franklin County.
6. **Bryant Creek** – from the confluence of Planer Branch in Douglas County to its confluence with the North Fork of the White River in Ozark County.

7. **Cane Creek** – from the confluence of Kenner Spring Branch in Butler County to the confluence of Harviell Ditch in Butler County.
8. **Castor River** – from the confluence of Pond Creek in Bollinger County including all unchannelized reaches to the Castor River Diversion Channel in Bollinger County.
9. **Center Creek** – from 0.4 miles upstream of Missouri Route 71 in Jasper County to 0.35 miles upstream from confluence with Spring River in Jasper County.
10. **Current River** – from the confluence of Pigeon Creek in Dent County to the confluence of Spring Bluff Creek in Ripley County.
11. **Eleven Point River** – from the confluence of Greer Spring Branch in Oregon County to the Missouri (Oregon County)-Arkansas (Randolph County) border.
12. **Elk River** – from the confluence of Indian Creek in McDonald County to 1.25 miles upstream of the Missouri (McDonald County)-Oklahoma (Delaware County) border in McDonald County.
13. **Gasconade River** – from the confluence of Crocker Creek in Wright County to its confluence with the Missouri River in Gasconade County.
14. **Indian Creek** – from 0.5 miles downstream of the confluence of Elkhorn Creek in McDonald County to its confluence with Elk River in McDonald County.
15. **Jack’s Fork River** – from the Missouri Route 106 Bridge in Shannon County to its confluence with the Current River in Shannon County.
16. **Little Black River** – from the convergence of the North Prong Little Black River and the South Prong Little Black River in Ripley County to the Missouri (Ripley County) –Arkansas (Clay County) border.
17. **Main Ditch** – from 0.5 miles upstream from the confluence of Main Ditch and Belle Fountain/State Line Ditch in Dunklin County to its confluence with Belle Fountain/State Line Ditch in Dunklin County.
18. **Meramec River** – from the confluence of Pine Branch in Crawford County to its confluence with the Mississippi River in Jefferson/St. Louis County.
19. **Mississippi River** – from the confluence of the Des Moines River in Clark County to the mouth of the Cuivre Slough in St. Charles County.
20. **North Fork of the White River** – from the Missouri Route 14 Bridge in Douglas County to 0.5 miles downstream of the confluence of Bryant Creek in Ozark County.
21. **North Fork Spring River** – from the confluence of Buck Branch in Jasper County to its confluence with Spring River in Jasper County.

22. **Osage Fork of the Gasconade** – from the confluence of Little Cobb Creek in Laclede County to its confluence with the Gasconade River in Laclede County.
23. **Osage River** – from the point of discharge from Bagnell Dam in Miller County to its confluence with the Missouri River in Cole/Osage County.
24. **Sac River** – from the point of discharge from Stockton Dam in Cedar County to the confluence of Coon Creek in St. Clair County.
25. **Salt River** – from the confluence of Spencer Creek in Ralls County to its confluence with the Mississippi River in Pike County.
26. **Shoal Creek**– from 1.3 miles downstream of the confluence of Joyce Branch in Barry County to 0.6 miles upstream of the Missouri (Newton County)-Oklahoma (Cherokee County) border in Newton County.
27. **South Prong Little Black River** – from the Missouri Route 21 Bridge in Ripley County to its confluence with the North Prong Little Black River in Ripley County.
28. **Spring River**– from 0.6 miles upstream of Missouri Route 97 in Lawrence County to the Missouri (Jasper County)-Oklahoma (Cherokee County) border in Jasper County.
29. **St. Francis River** - from the confluence of Twelvemile Creek in Madison County to the confluence of Holiday Creek in Wayne County.

Table 1. Approximate number of river miles affected, by stream.

Stream	River Miles (Approx.)
Belle Fountain/State Line Ditch	9
Big Piney River	64.4
Big River	21
Black River	85.2
Bourbeuse River	134.6
Bryant Creek	40.7
Cane Creek	8.6
Castor River	15
Center Creek	25.9
Current River	127.4
Eleven Point River	33
Elk River	15.5
Gasconade River	234.1
Indian Creek	20.1
Jack's Fork River	13.6
Little Black River	46.3
Main Ditch	0.5
Meramec River	149.6
Mississippi River	128
Niangua River	33.5
North Fork of the White River	25.5
North Fork Spring River	10.2
Osage Fork of the Gasconade	25.5
Osage River	80.1
Sac River	44.3
Salt River	29.4
Shoal Creek	56.2
South Prong Little Black River	5.3
Spring River	53.9
St. Francis River	40
Total	1542.9

Table 2. UTM coordinates of the up and downstream boundaries of affected streams.

Stream	Upstream Boundary		Downstream Boundary	
	UTM X	UTM Y	UTM X	UTM Y
Belle Fountain/State Line Ditch	774043	3990025	760027	3987542
Big Piney River	593201	4143076	582326	4193333
Big River	707281	4245958	707755	4260876
Black River	697778	4112108	693911	4054007
Bourbeuse River	621128	4218921	684299	4252203
Bryant Creek	546217	4083083	563653	4050270
Cane Creek	723077	4068498	726147	4061507
Castor River	754001	4117222	766310	4110702
Center Creek	383973	4107775	356915	4112945
Current River	616571	4146679	693910	4054007
Eleven Point River	648210	4073798	663668	4040697
Elk River	370249	4049463	357338	4054844
Gasconade River	553621	4135739	626296	4281813
Indian Creek	381177	4064777	370249	4049463
Jack's Fork River	638066	4112527	652894	4117344
Little Black River	701987	4069127	703629	4041635
Main Ditch	760625	3987762	760027	3987541
Meramec River	640007	4208265	732120	4252098
Mississippi River	634210	4470987	705669	4307614
North Fork of the White River	575418	4075419	563642	4049557
North Fork Spring River	373315	4124811	363873	4125767
Osage Fork of the Gasconade	547178	4158807	549159	4178300
Osage River	532836	4228480	591605	4272311
Sac River	432132	4172089	434943	4202936
Salt River	643164	4379439	667061	4370415
Shoal Creek	406567	4074863	356712	4100494
South Prong Little Black River	695553	4068918	701987	4069127
Spring River	416479	4110808	356374	4117655
St. Francis River	725098	4139242	726688	4108421

Sensitive Aquatic Species Missouri Stream Reaches

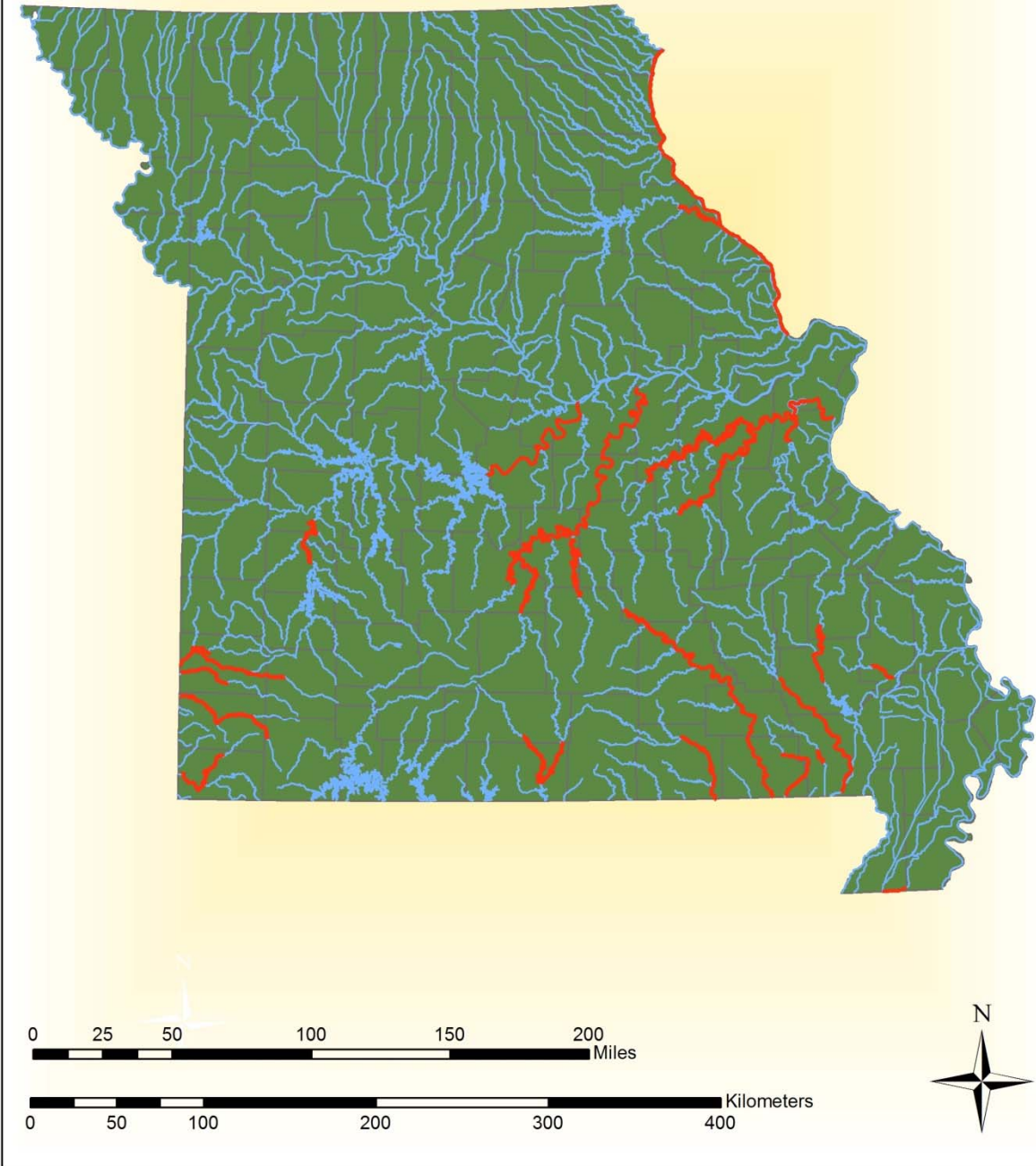


Figure 1. Location of affected streams within Missouri.