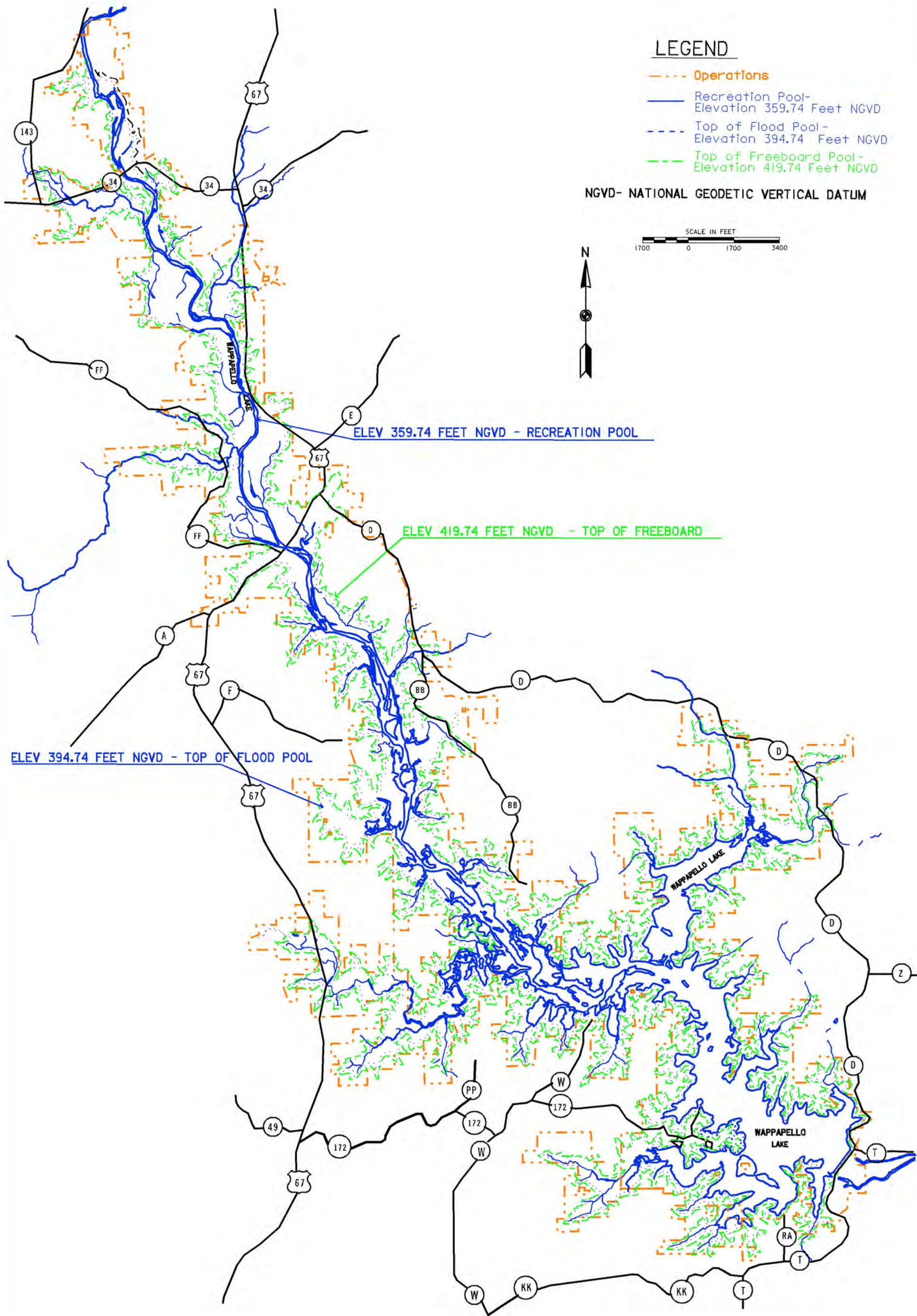


## SECTION XV- PLATES

<i>Plate</i>	<i>Smaller, Faster Map</i>	<i>Larger, Slower Map</i>
1	<u>Land Allocations Map</u>	<u>Land Allocations Map</u>
2	<u>Land Classification Map</u>	<u>Land Classification Map</u>
3	<u>Zones of Influence</u>	<u>Zones of Influence</u>
4	<u>Road Network</u>	<u>Road Network</u>
5	<u>Spillway Recreation Area R-19</u>	<u>Spillway Recreation Area R-19</u>
5	<u>Redman Creek Recreation Area R-1</u>	<u>Redman Creek Recreation Area R-1</u>
6	<u>Rockwood Point Recreation Area R-2</u>	<u>Rockwood Point Recreation Area R-2</u>
6	<u>Barrett's Resort R-2</u>	<u>Barrett's Resort R-2</u>
7	<u>Baker Lodge Recreation Area R-3</u>	<u>Baker Lodge Recreation Area R-3</u>
7	<u>Poole Lodge Recreation Area R-11</u>	<u>Poole Lodge Recreation Area R-11</u>
8	<u>Lake Wappapello State Park R-4</u>	<u>Lake Wappapello State Park R-4</u>
9	<u>Chaonia Landing Recreation Area R-5</u>	<u>Chaonia Landing Recreation Area R-5</u>
10	<u>Holliday Landing Recreation Area R-6</u>	<u>Holliday Landing Recreation Area R-6</u>
11	<u>34 Bridge Recreation Area R-7</u>	<u>34 Bridge Recreation Area R-7</u>
12	<u>North Greenville Recreation Area R-8</u>	<u>North Greenville Recreation Area R-8</u>
13	<u>Greenville Recreation Area R-9</u>	<u>Greenville Recreation Area R-9</u>
14	<u>Sulphur Springs Recreation Area R-10</u>	<u>Sulphur Springs Recreation Area R-10</u>
14	<u>Johnson Tract ES-E-2</u>	<u>Johnson Tract ES-E-2</u>
14	<u>Laconia Vegetative Management MR-VM-7</u>	<u>Laconia Vegetative Management MR-VM-7</u>
15	<u>Lost Creek Recreation Area R-12</u>	<u>Lost Creek Recreation Area R-12</u>
16	<u>Camp SEMO Recreation Area R-13</u>	<u>Camp SEMO Recreation Area R-13</u>
17	<u>Possum Creek Recreation Area R-14</u>	<u>Possum Creek Recreation Area R-14</u>
18	<u>Camp Latonka Recreation Area R-15</u>	<u>Camp Latonka Recreation Area R-15</u>
19	<u>Peoples Creek Recreation Area R-16</u>	<u>Peoples Creek Recreation Area R-16</u>
19	<u>Sundowner Recreation Area R-17</u>	<u>Sundowner Recreation Area R-17</u>
19	<u>Dikes 1,2 &amp; 3 OP-2</u>	<u>Dikes 1,2 &amp; 3 OP-2</u>
20	<u>Eagle Point Recreation Area R-18</u>	<u>Eagle Point Recreation Area R-18</u>
20	<u>Project Operations OP-1</u>	<u>Project Operations OP-1</u>
21	<u>Shoreline Management Plan</u>	<u>Shoreline Management Plan</u>
22, 22A, 22B	<u>Revised Plans, Elevations and Sections</u>	<u>Revised Plans, Elevations and Sections</u>
23	<u>Fluctuation of Reservoir and Hydrological Data</u>	<u>Fluctuation of Reservoir and Hydrological Data</u>





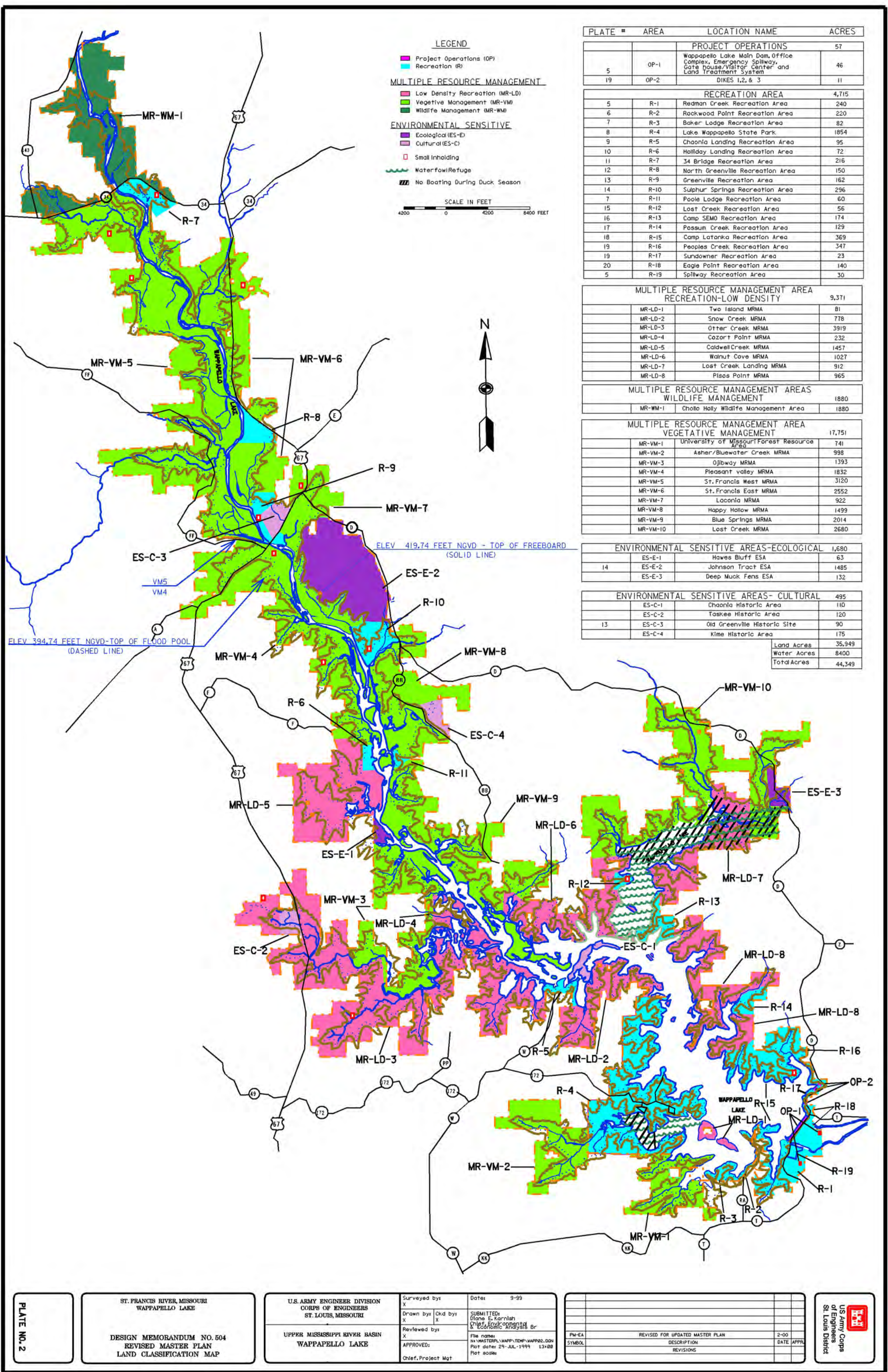


PLATE #	AREA	LOCATION NAME	ACRES
PROJECT OPERATIONS			57
5	OP-1	Wappapello Lake Main Dam, Office Complex, Emergency Spillway, Gate house/Visitor Center and Land Treatment System	46
19	OP-2	DIKES 1,2, & 3	11
RECREATION AREA			4,715
5	R-1	Redman Creek Recreation Area	240
6	R-2	Rockwood Point Recreation Area	220
7	R-3	Baker Lodge Recreation Area	82
8	R-4	Lake Wappapello State Park	1854
9	R-5	Chaonia Landing Recreation Area	95
10	R-6	Holiday Landing Recreation Area	72
11	R-7	34 Bridge Recreation Area	216
12	R-8	North Greenville Recreation Area	150
13	R-9	Greenville Recreation Area	162
14	R-10	Sulphur Springs Recreation Area	296
7	R-11	Poole Lodge Recreation Area	60
15	R-12	Lost Creek Recreation Area	56
16	R-13	Camp SEMO Recreation Area	174
17	R-14	Possum Creek Recreation Area	129
18	R-15	Camp Latanka Recreation Area	369
19	R-16	Peoples Creek Recreation Area	347
19	R-17	Sundowner Recreation Area	23
20	R-18	Eagle Point Recreation Area	140
5	R-19	Spillway Recreation Area	30
MULTIPLE RESOURCE MANAGEMENT AREA RECREATION-LOW DENSITY			9,371
	MR-LD-1	Two Island MRMA	81
	MR-LD-2	Snow Creek MRMA	778
	MR-LD-3	Otter Creek MRMA	3919
	MR-LD-4	Cozart Point MRMA	232
	MR-LD-5	Caldwell Creek MRMA	1457
	MR-LD-6	Walnut Cove MRMA	1027
	MR-LD-7	Lost Creek Landing MRMA	912
	MR-LD-8	Pises Point MRMA	965
MULTIPLE RESOURCE MANAGEMENT AREAS WILDLIFE MANAGEMENT			1880
	MR-WM-1	Cholla Holly Wildlife Management Area	1880
MULTIPLE RESOURCE MANAGEMENT AREA VEGETATIVE MANAGEMENT			17,751
	MR-VM-1	University of Missouri Forest Resource Area	741
	MR-VM-2	Asher/Bluewater Creek MRMA	998
	MR-VM-3	Ojibway MRMA	1393
	MR-VM-4	Pleasant valley MRMA	1832
	MR-VM-5	St. Francis West MRMA	3120
	MR-VM-6	St. Francis East MRMA	2552
	MR-VM-7	Lacania MRMA	922
	MR-VM-8	Happy Hollow MRMA	1499
	MR-VM-9	Blue Springs MRMA	2014
	MR-VM-10	Lost Creek MRMA	2680
ENVIRONMENTAL SENSITIVE AREAS-ECOLOGICAL			1,680
	ES-E-1	Hawes Bluff ESA	63
14	ES-E-2	Johnson Tract ESA	1485
	ES-E-3	Deep Muck Fens ESA	132
ENVIRONMENTAL SENSITIVE AREAS- CULTURAL			495
	ES-C-1	Chaonia Historic Area	110
	ES-C-2	Taskee Historic Area	120
13	ES-C-3	Old Greenville Historic Site	90
	ES-C-4	Kime Historic Area	175
		Land Acres	35,949
		Water Acres	8400
		Total Acres	44,349

PLATE NO. 2

ST. FRANCIS RIVER, MISSOURI  
WAPPAPELLO LAKE

DESIGN MEMORANDUM NO. 504  
REVISED MASTER PLAN  
LAND CLASSIFICATION MAP

U.S. ARMY ENGINEER DIVISION  
CORPS OF ENGINEERS  
ST. LOUIS, MISSOURI

UPPER MISSISSIPPI RIVER BASIN  
WAPPAPELLO LAKE

Surveyed by: X  
Drawn by: X  
Reviewed by: X  
APPROVED: X  
Chief, Project Mgt

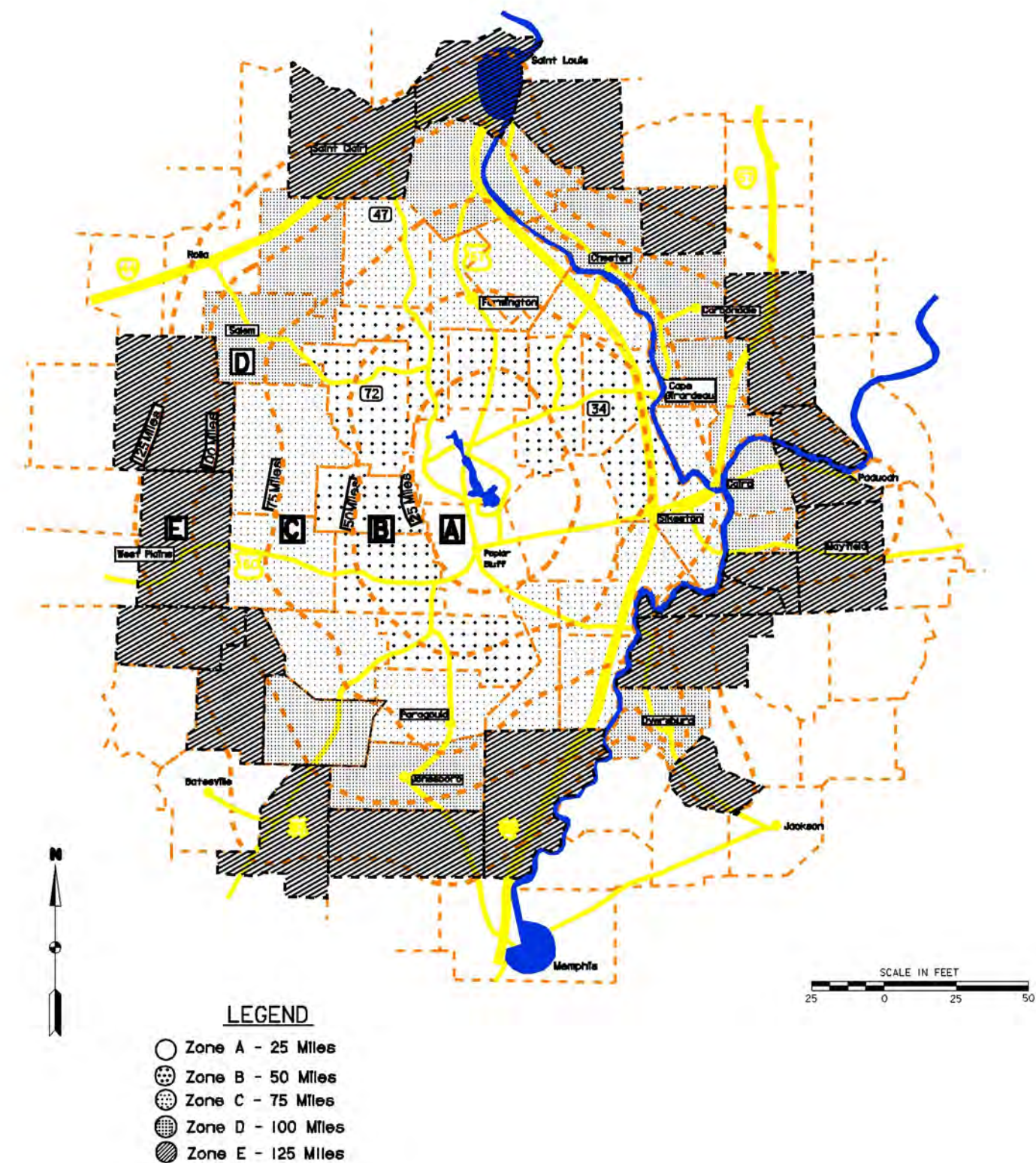
Dates: 9-99  
SUBMITTED: Diane E. Karnish  
Chief, Environmental & Economic Analysis Br  
File name: H:\MSTDRP\WAPP\TDR\WAPP02.DGN  
Plot date: 29-JUL-1999 13:08  
Plot scale:

PH-0A	REVISED FOR UPDATED MASTER PLAN	2-00	
SUBSYMBOL	DESCRIPTION	DATE	APPR.
	REVISIONS		

U.S. Army Corps of Engineers  
St. Louis District







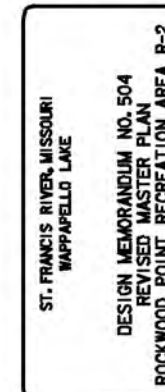




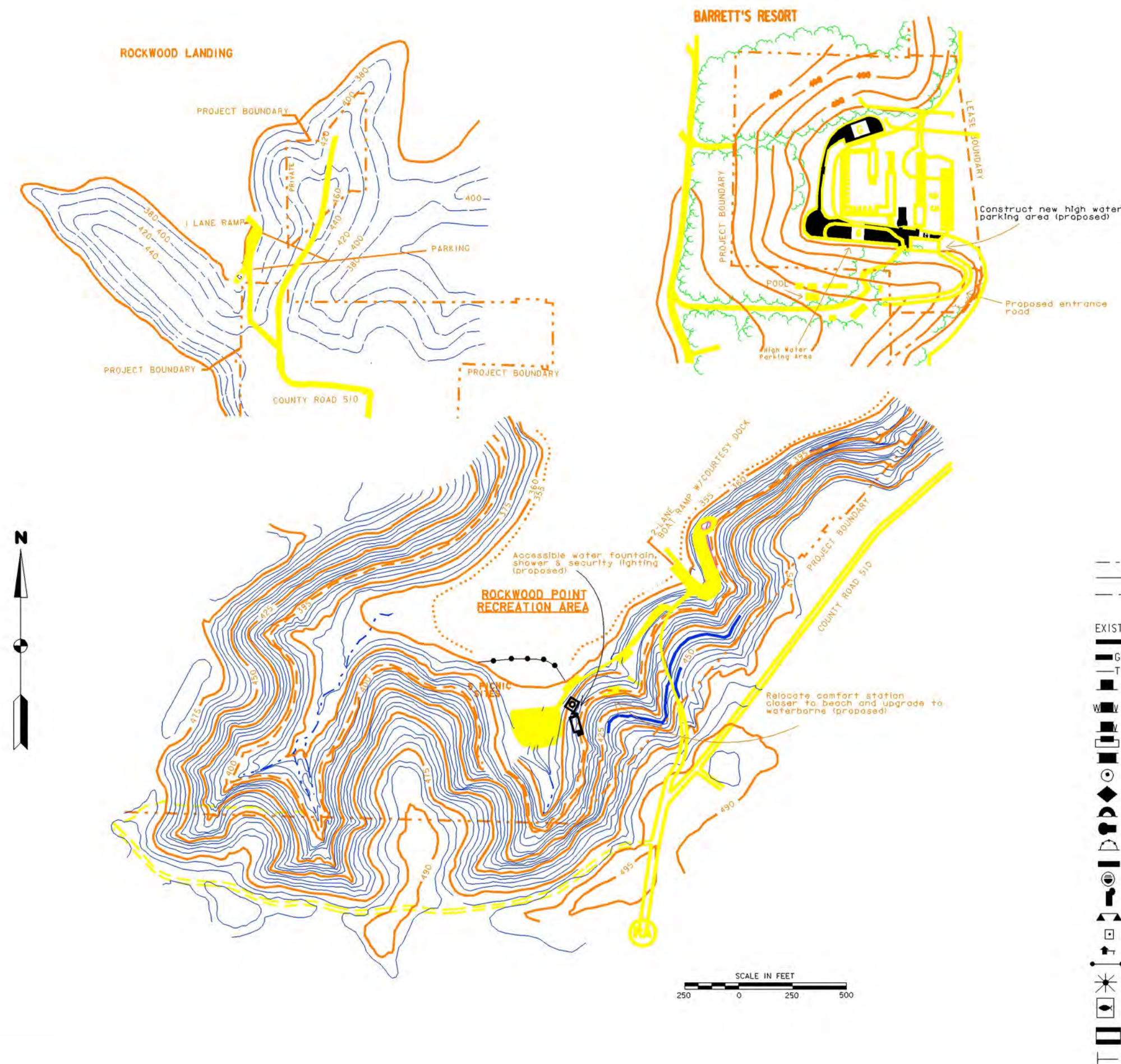








RECREATIONAL FACILITIES			
ROCKWOOD POINT R-2			
FACILITY	EXISTING	PROPOSED	FUTURE
COMFORT STATION (WATERBORNE)			
COMFORT STATION (VAULT)	1	- 1	
COMFORT STATION (W.B. W/VAULT)		1	
SHOWERHOUSE			
PICNIC SHELTER			
SEWAGE TREATMENT FACILITY			
CABIN			
VISITOR CENTER			
GROUP CAMP			
OVERFLOW CAMP			
CAMPSITES			
PICNIC SITES	5		
DUMP STATION			
BOAT LAUNCHING RAMP (LANES)	2(3)		
SWIMMING BEACH	1		
COURTESY DOCK	1		
AMPHITHEATER			
OVERLOOK			
PLAYGROUND EQUIPMENT			
FOUNTAIN AND/OR HYDRANT		1	
PLAY COURT			
CONTROL STATION			
FISH CLEANING STATION			
TRAIL			
BULLETIN BOARD	1		
LIFT STATION			
WELL			
FISHING PIER			
OUTDOOR SHOWER		1	

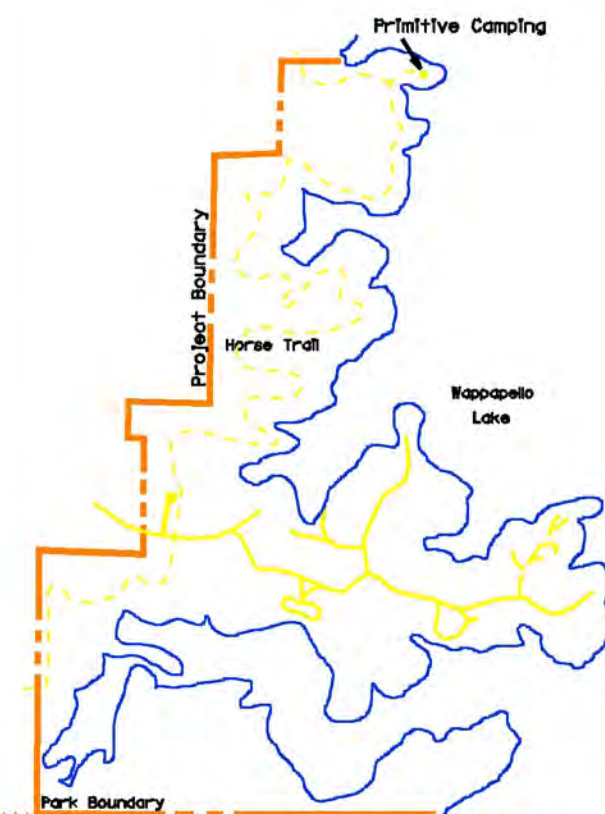
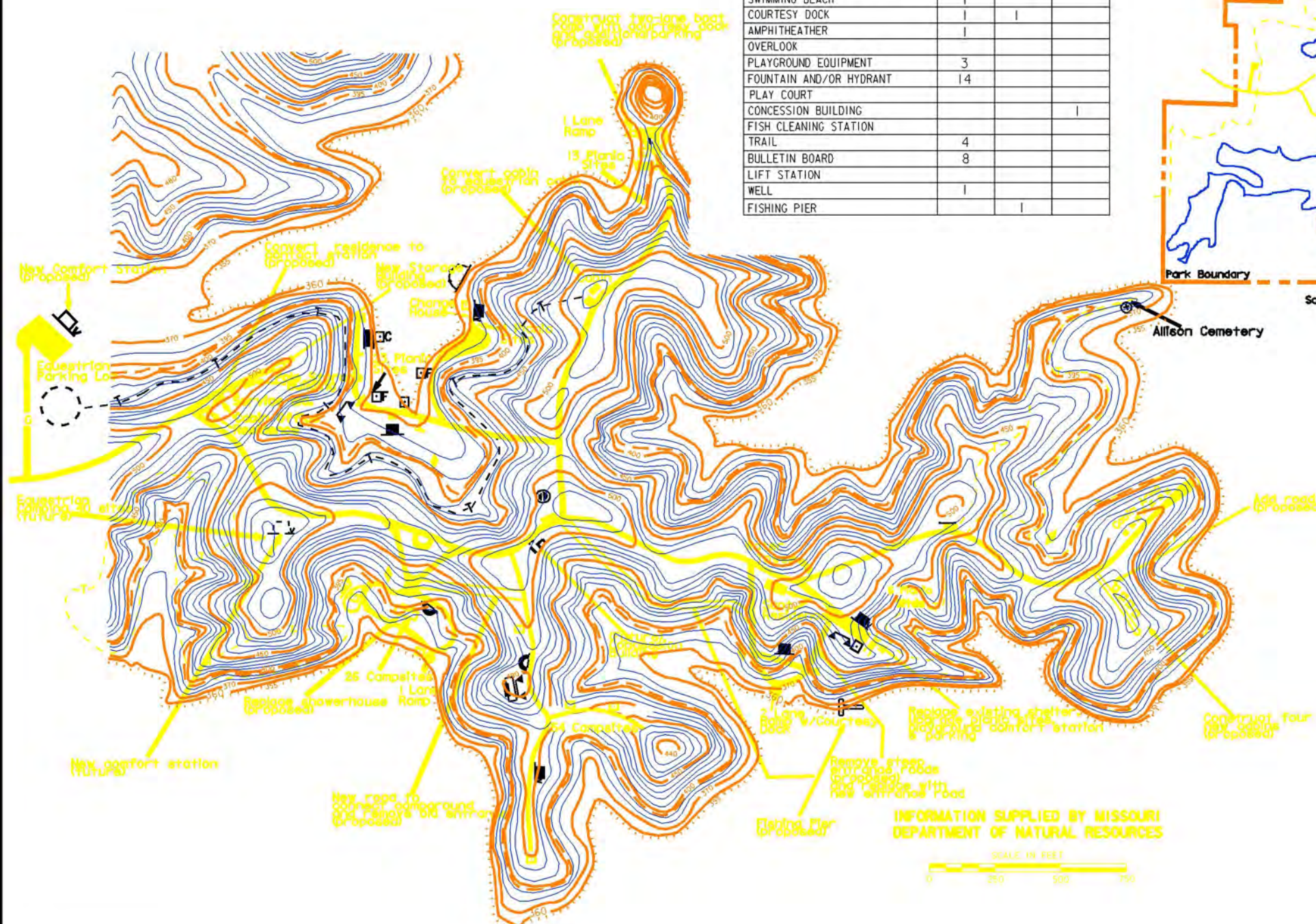









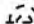


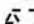

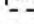






RECREATIONAL FACILITIES			
LAKE WAPPAPELLO STATE PARK AREA R-4			
FACILITY	EXISTING	PROPOSED	FUTURE
COMFORT STATION (WATERBORNE)	2		
COMFORT STATION (VAULT)	5	1	1
COMFORT STATION (W.B. W/VAULT)			
SHOWERHOUSE	2		
PICNIC SHELTER	2	1	
SEWAGE TREATMENT FACILITY	4		
CABIN	8	4	
VISITOR CENTER		1	
GROUP CAMP			
OVERFLOW CAMP			
CAMPSITES	80		40
PICNIC SITES	46		
DUMP STATION	2		
BOAT LAUNCHING RAMP (LANES)	3(4)	(1)	
SWIMMING BEACH	1		
COURTESY DOCK	1	1	
AMPHITHEATER	1		
OVERLOOK			
PLAYGROUND EQUIPMENT	3		
FOUNTAIN AND/OR HYDRANT	14		
PLAY COURT			
CONCESSION BUILDING			1
FISH CLEANING STATION			
TRAIL	4		
BULLETIN BOARD	8		
LIFT STATION			
WELL	1		
FISHING PIER		1	



Scale 1' = 2,000'

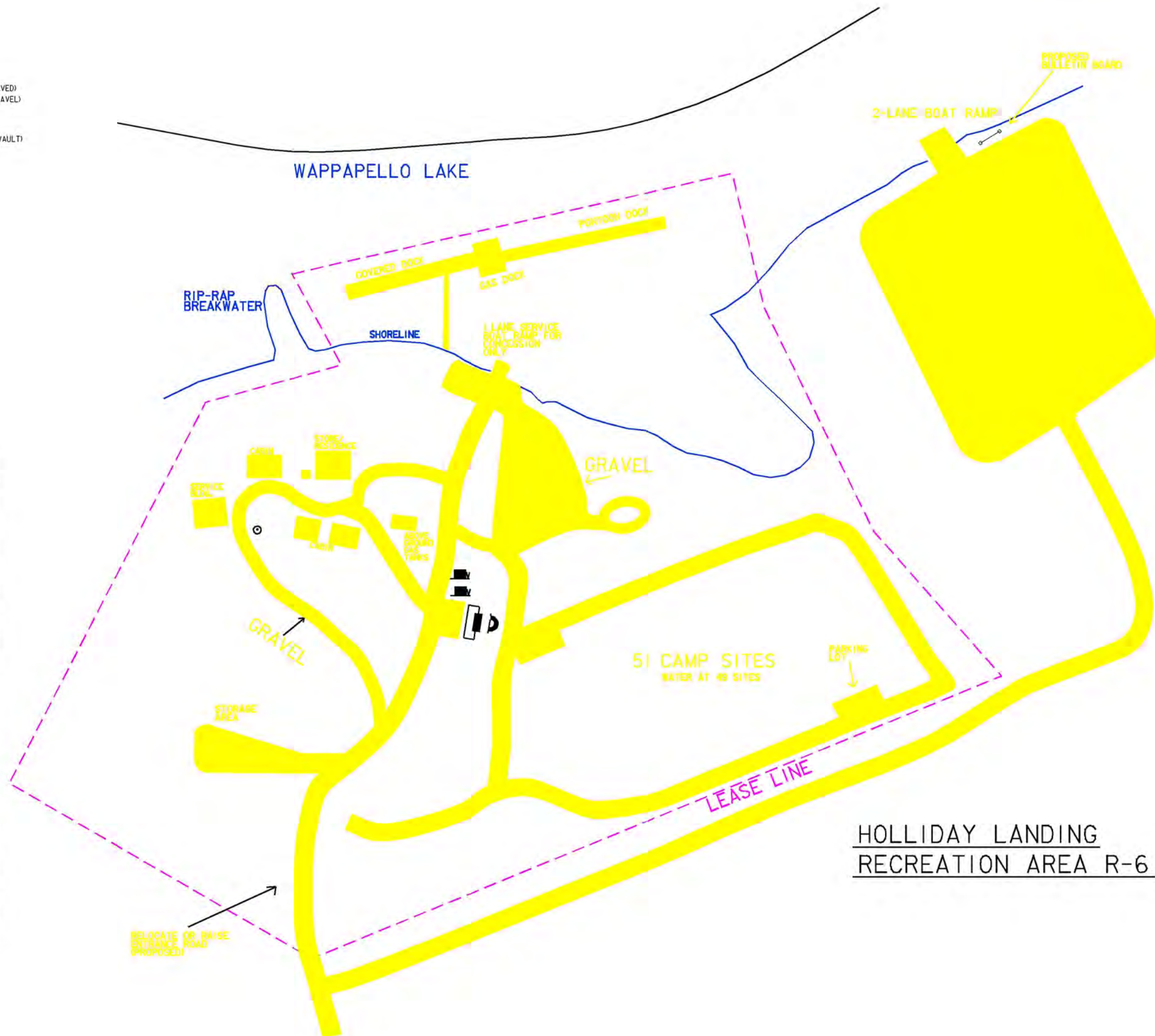
### LEGEND

- |   |   |   |  |
|---|---|---|--|
| ---   | PROJECT BOUNDARY  |   |  |
| =====   | RECREATION POOL (359.74 NVGD)   |   |  |
| ---   | CONCESSION BOUNDARY   |   |  |
| EXISTING  | PROPOSED  | FUTURE  |  |
| =====   | =====   | == == :   | ROADS, PARKING & CAMPING PADS (PAVED)  |
| ==G==   | ==G==   | == G ==   | ROADS, PARKING & CAMPING PADS (GRAVEL) |
| -T-   | -T-   | -----   | HIKING TRAILS                          |
|  |  |  | COMFORT STATION (WATER BORNE)          |
|  |  |  | COMFORT STATION (WATER BORNE W/VAULT)  |
|  |  |  | COMFORT STATION (VAULT)                |
|  |  |  | SHOWERHOUSE                            |
|  |  |  | GROUP PICNIC SHELTER                   |
|  |  |  | WELL                                   |
|  |  |  | SEWAGE TREATMENT FACILITY              |
|  |  |  | DUMP STATION                           |
|  |  |  | BOAT LAUNCHING RAMP                    |
|  |  |  | SWIMMING BEACH                         |
|  |  |  | COURTESY DOCK                          |
|  |  |  | AMPHITHEATER                           |
|  |  |  | OVERLOOK                               |
|  |  |  | PLAYGROUND EQUIPMENT                   |
|  |  |  | FOUNTAIN AND/OR HYDRANT                |
|  |  |  | CONTROL STATION                        |
|  |  |  | BULLETIN BOARD                         |
|  |  |  | LIFT STATION                           |
|  |  |  | FISH CLEANING STATION                  |
|  |  |  | PLAY COURT                             |
|  |  |  | FISHING PIER                           |









RECREATIONAL FACILITIES			
HOLLIDAY LANDING R-6			
FACILITY	EXISTING	PROPOSED	FUTURE
COMFORT STATION (WATERBORNE)			
COMFORT STATION (VAULT)	[2]		
COMFORT STATION (W.B. W/VAULT)			
SHOWERHOUSE	[1]		
PICNIC SHELTER			
SEWAGE TREATMENT FACILITY			
CABINS (UNITS)	[3(6)]		
VISITOR CENTER			
GROUP CAMP			
OVERFLOW CAMP			
CAMPSITES	[5]		
PICNIC SITES	[2]		
DUMP STATION	[1]		
BOAT LAUNCHING RAMP (LANES)	[1],1(2)		
SWIMMING BEACH			
COURTESY DOCK			
AMPHITHEATER			
OVERLOOK			
PLAYGROUND EQUIPMENT			
FOUNTAIN AND/OR HYDRANT	[49]		
PLAY COURT			
CONTROL STATION			
FISH CLEANING STATION			
TRAIL			
BULLETIN BOARD		1	
LIFT STATION			
WELL	[1]		
FISHING PIER			

[ ] - CONCESSION FACILITIES



LEGEND

PROJECT BOUNDARY

RECREATION POOL (359.74 NYGD)

CONCESSION BOUNDARY

EXISTING

PROPOSED

FUTURE

ROADS, PARKING & CAMPING PADS (PAVED)

ROADS, PARKING & CAMPING PADS (GRAVEL)

HIKING TRAILS

COMFORT STATION (WATER BORNE)

COMFORT STATION (WATER BORNE W/VAULT)

COMFORT STATION (VAULT)

SHOWERHOUSE

GROUP PICNIC SHELTER

WELL

SEWAGE TREATMENT FACILITY

DUMP STATION

BOAT LAUNCHING RAMP

SWIMMING BEACH

COURTESY DOCK

AMPHITHEATER

OVERLOOK

PLAYGROUND EQUIPMENT

FOUNTAIN AND/OR HYDRANT

CONTROL STATION

BULLETIN BOARD

LIFT STATION

FISH CLEANING STATION

PLAY COURT

FISHING PIER

34 BRIDGE R-7

FACILITY	EXISTING	PROPOSED	FUTURE
COMFORT STATION (WATERBORNE)			
COMFORT STATION (VAULT)		I	
COMFORT STATION (W.B. W/VAULT)			
SHOWERHOUSE			
PICNIC SHELTER			
SEWAGE TREATMENT FACILITY			
CABIN			
VISITOR CENTER			
GROUP CAMP			
OVERFLOW CAMP			
CAMPSITES			
PICNIC SITES			
DUMP STATION			
BOAT LAUNCHING RAMP (LANES)			
SWIMMING BEACH			
COURTESY DOCK			
AMPHITHEATER			
OVERLOOK			
PLAYGROUND EQUIPMENT			
FOUNTAIN AND/OR HYDRANT		I	
PLAY COURT			
CONTROL STATION			
FISH CLEANING STATION			
TRAIL			
BULLETIN BOARD	I		
LIFT STATION			
WELL			
FISHING PIER			

The map illustrates the 34 Bridge R-7 area, featuring the St. Francis River and several gravel bars. A yellow line indicates the Corps Boundary, and a dashed orange line shows the Project Boundary. A green line outlines the (Proposed) Future Development Area. Key features include a vault toilet relocated from the Greenville Recreation Area, a picnic area (P.A. (G)), and a gravel bar. The map also shows the location of Highway 34 and the Corps Boundary.

34 BRIDGE R-7

US Army Corps of Engineers St. Louis District

Rev	Date	Description
1	11-99	REVISION FOR UPDATED MASTER PLAN
2	11-01	REVISION FOR UPDATED MASTER PLAN
3	11-01	REVISION FOR UPDATED MASTER PLAN
4	11-01	REVISION FOR UPDATED MASTER PLAN
5	11-01	REVISION FOR UPDATED MASTER PLAN
6	11-01	REVISION FOR UPDATED MASTER PLAN
7	11-01	REVISION FOR UPDATED MASTER PLAN
8	11-01	REVISION FOR UPDATED MASTER PLAN
9	11-01	REVISION FOR UPDATED MASTER PLAN
10	11-01	REVISION FOR UPDATED MASTER PLAN

U.S. ARMY ENGINEER DIVISION CORPS OF ENGINEERS ST. LOUIS, MISSOURI	U.S. ARMY ENGINEER DIVISION CORPS OF ENGINEERS ST. LOUIS, MISSOURI
DESIGNED BY DRAWN BY CHECKED BY APPROVED BY	DESIGNED BY DRAWN BY CHECKED BY APPROVED BY
U.S. ARMY ENGINEER DIVISION CORPS OF ENGINEERS ST. LOUIS, MISSOURI	U.S. ARMY ENGINEER DIVISION CORPS OF ENGINEERS ST. LOUIS, MISSOURI

ST. FRANCIS RIVER, MISSOURI WAPPAPPELLO LAKE	DESIGN MEMORANDUM NO. 504 REVISED MASTER PLAN 34 BRIDGE RECREATION AREA R-7
---	---

PLATE NO. 11



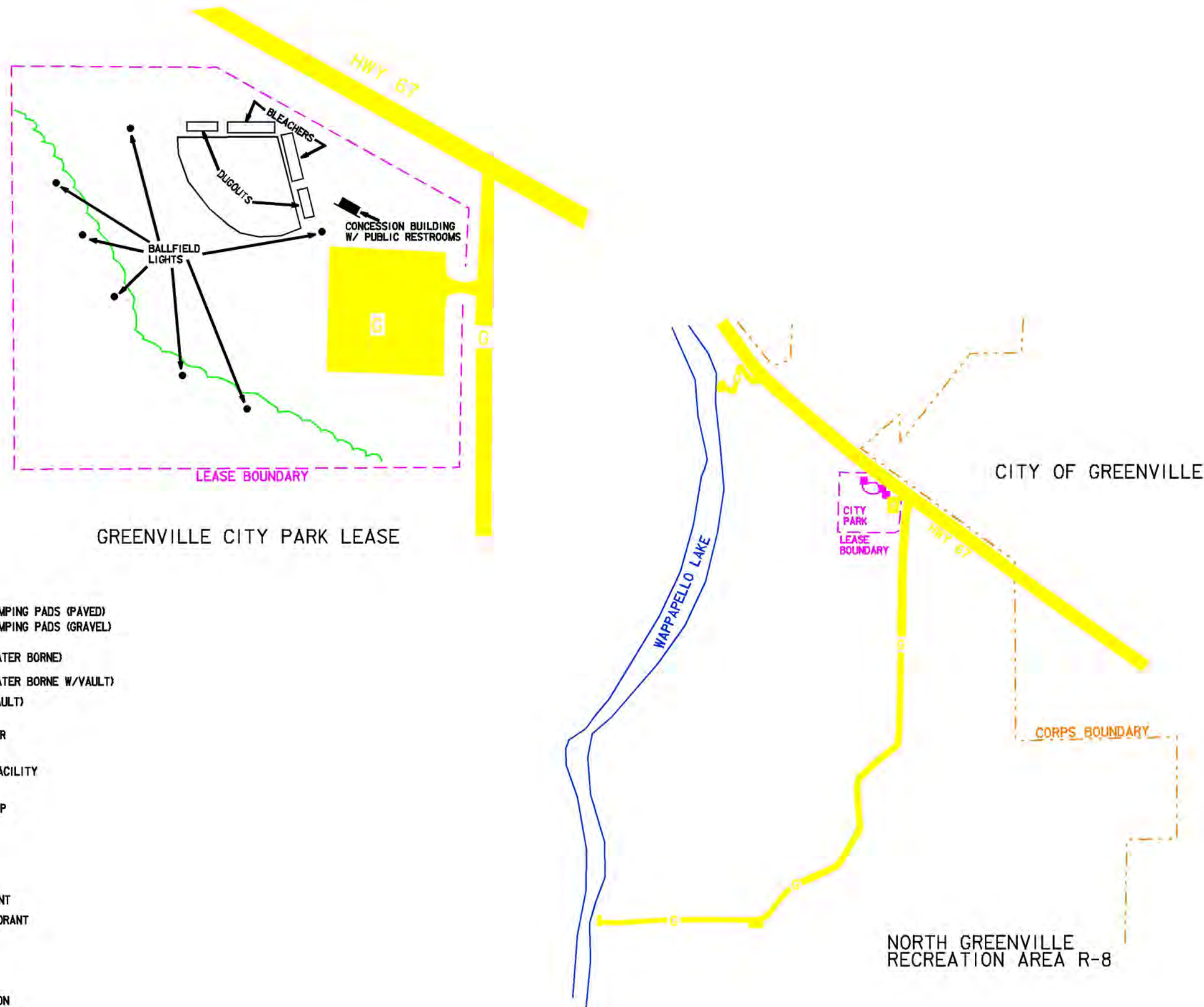
RECREATIONAL FACILITIES			
NORTH GREENVILLE R-8			
FACILITY	EXISTING	PROPOSED	FUTURE
COMFORT STATION (WATERBORNE)	[1]		
COMFORT STATION (VAULT)			
COMFORT STATION (M.B. W/VAULT)			
SHOWERHOUSE			
PICNIC SHELTER			
SEWAGE TREATMENT FACILITY			
CABIN			
VISITOR CENTER			
GROUP CAMP			
OVERFLOW CAMP			
CAMP SITES			
PICNIC SITES			
DUMP STATION			
BOAT LAUNCHING RAMP (LANES)			
SWIMMING BEACH			
COURTESY DOCK			
AMPHITHEATER			
OVERLOOK			
PLAYGROUND EQUIPMENT			
FOUNTAIN AND/OR HYDRANT	[1]		
PLAY COURT	[1]		
CONTROL STATION			
FISH CLEANING STATION			
TRAIL			
BULLETIN BOARD			
LIFT STATION			
WELL			
FISHING PIER			

[ 1 ] denotes Concession Facilities

### LEGEND

- PROJECT BOUNDARY
- RECREATION POOL (359.74 NVGD)
- CONCESSION BOUNDARY

EXISTING	PROPOSED	FUTURE	
			ROADS, PARKING & CAMPING PADS (PAVED)
			ROADS, PARKING & CAMPING PADS (GRAVEL)
			HIKING TRAILS
			COMFORT STATION (WATER BORNE)
			COMFORT STATION (WATER BORNE W/VAULT)
			COMFORT STATION (VAULT)
			SHOWERHOUSE
			GROUP PICNIC SHELTER
			WELL
			SEWAGE TREATMENT FACILITY
			DUMP STATION
			BOAT LAUNCHING RAMP
			SWIMMING BEACH
			COURTESY DOCK
			AMPHITHEATER
			OVERLOOK
			PLAYGROUND EQUIPMENT
			FOUNTAIN AND/OR HYDRANT
			CONTROL STATION
			BULLETIN BOARD
			LIFT STATION
			FISH CLEANING STATION
			PLAY COURT
			FISHING PIER



REVISION	DATE	BY	CHKD	APP'D
1				
2				
3				
4				
5				
6				
7				
8				
9				
10				

DESIGNED BY	DRAWN BY	CHECKED BY	APPROVED BY	DATE

ST. FRANCIS RIVER, MISSOURI	WAPPAPELLO LAKE





MATCHLINE

Raise entrance road  
3' to 379.0 NVGD  
(Proposed)

HISTORICAL TRAIL (SIDEWALKS)  
WITH INTERPRETIVE DISPLAYS

Add 25 campsites w/50 amp electric  
and water hookups (Includes 5 sites  
relocated from walk-in tent camp area  
with 5 car parking lot (proposed))

Install 5-car parking lot  
(Proposed)

Widen roadway  
for two-way traffic

Relocate 5 Walk-In Campsites (proposed)  
Improve bank fishing & boat mooring

CAMPGROUND  
III SITES

UNION CEMETERY

RECREATIONAL FACILITIES			
GREENVILLE R-9			
FACILITY	EXISTING	PROPOSED	FUTURE
COMFORT STATION (WATERBORNE)			
COMFORT STATION (VAULT)	1	1	
COMFORT STATION (W.B. W/VAULT)	5		
SHOWERHOUSE			
PICNIC SHELTER	1		
SEWAGE TREATMENT FACILITY			
CABIN			
VISITOR CENTER			
GROUP CAMP			
CAMP SITES	111	20	
PICNIC SITES	14		
DUMP STATION			
BOAT LAUNCHING RAMP (LANES)	1(2)		
SWIMMING BEACH			
COURTESY DOCK	2		
AMPHITHEATER	1		
OVERLOOK			
PLAYGROUND EQUIPMENT	1	1	
FOUNTAIN AND/OR HYDRANT	15	10	
PLAY COURT			
CONTROL STATION	1		
FISH CLEANING STATION		1	
TRAIL	1		
BULLETIN BOARD	2		
LIFT STATION			
WELL	1		
FISHING PIER		1	
HORSESHOE PITS	2		

Fish Cleaning Station  
(Proposed)

HISTORICAL  
INFORMATION  
CENTER

2 PICNIC  
SITES

1 PICNIC  
SITE

2 LANE RAMP  
W/COURTESY  
DOCK

1 PICNIC SITE (relocated)

4 PICNIC  
SITES

Develop walk-in access  
to island (proposed)

Disabled bank fishing pier  
(proposed)

Remove Comfort Station  
and relocate to  
34 Bridge Recreation Area  
(Proposed)

TO ST. LOUIS

TO PORTAGE BLVD

67

SCALE IN FEET

125 0 125 250

HISTORIC AREA BOUNDARY

COURTESY DOCK

WALK-IN CAMPSITES

WALK-IN CAMPSITES

WALK-IN CAMPSITES

WALK-IN CAMPSITES

WALK-IN CAMPSITES

WALK-IN CAMPSITES

WALK-IN CAMPSITES

WALK-IN CAMPSITES

WALK-IN CAMPSITES

WALK-IN CAMPSITES

WALK-IN CAMPSITES

WALK-IN CAMPSITES

WALK-IN CAMPSITES

WALK-IN CAMPSITES

WALK-IN CAMPSITES

WALK-IN CAMPSITES

WALK-IN CAMPSITES

WALK-IN CAMPSITES

WALK-IN CAMPSITES

WALK-IN CAMPSITES

WALK-IN CAMPSITES

WALK-IN CAMPSITES

WALK-IN CAMPSITES

WALK-IN CAMPSITES

WALK-IN CAMPSITES

WALK-IN CAMPSITES

WALK-IN CAMPSITES

WALK-IN CAMPSITES

WALK-IN CAMPSITES

WALK-IN CAMPSITES

WALK-IN CAMPSITES

WALK-IN CAMPSITES

WALK-IN CAMPSITES

WALK-IN CAMPSITES

WALK-IN CAMPSITES

WALK-IN CAMPSITES

WALK-IN CAMPSITES

WALK-IN CAMPSITES

WALK-IN CAMPSITES

WALK-IN CAMPSITES

LEGEND	
PROJECT BOUNDARY	RECREATION POOL (359.74 NVGD)
CONCESSION BOUNDARY	AREA BOUNDARY
EXISTING	PROPOSED
ROADS, PARKING & CAMPING PADS (PAVED)	ROADS, PARKING & CAMPING PADS (GRAVEL)
HIKING TRAILS	COMFORT STATION (WATER BORNE)
COMFORT STATION (WATER BORNE)	COMFORT STATION (VAULT)
COMFORT STATION (VAULT)	SHOWERHOUSE
GROUP PICNIC SHELTER	WELL
SEWAGE TREATMENT FACILITY	DUMP STATION
BOAT LAUNCHING RAMP	SWIMMING BEACH
COURTESY DOCK	AMPHITHEATER
OVERLOOK	PLAYGROUND EQUIPMENT
FOUNTAIN AND/OR HYDRANT	CONTROL STATION
BULLETIN BOARD	LIFT STATION
FISH CLEANING STATION	PLAY COURT
FISHING PIER	HORSESHOE PITS

Remove Comfort Station  
and relocate to  
34 Bridge Recreation Area  
(Proposed)

Develop walk-in access  
to island (proposed)

Disabled bank fishing pier  
(proposed)

1 PICNIC SITE (relocated)

2 LANE RAMP  
W/COURTESY  
DOCK

4 PICNIC  
SITES

Develop walk-in access  
to island (proposed)

Disabled bank fishing pier  
(proposed)

Remove Comfort Station  
and relocate to  
34 Bridge Recreation Area  
(Proposed)

ROADS, PARKING & CAMPING PADS (PAVED)

ROADS, PARKING & CAMPING PADS (GRAVEL)

HIKING TRAILS

COMFORT STATION (WATER BORNE)

COMFORT STATION (VAULT)

SHOWERHOUSE

GROUP PICNIC SHELTER

WELL

SEWAGE TREATMENT FACILITY



US Army Corps  
of Engineers  
St. Louis District

DESIGNED BY	DATE	5-00
DRAWN BY	DATE	5-00
CHECKED BY	DATE	5-00
APPROVED BY	DATE	5-00
PROJECT MGR	DATE	5-00

U.S. ARMY ENGINEER DIVISION  
CORPS OF ENGINEERS  
ST. LOUIS, MISSOURI

UPPER MISSISSIPPI RIVER BASIN  
WAPPAPPELLO LAKE

ST. FRANCIS RIVER, MISSOURI  
WAPPAPPELLO LAKE

DESIGN MEMORANDUM NO. 504  
REVISED MASTER PLAN  
GREENVILLE RECREATION AREA R-9

PLATE NO. 13





LEGEND

EXISTING	PROPOSED	FUTURE	
[Symbol]	[Symbol]	[Symbol]	ROADS, PARKING & CAMPING PADS (PAVED)
[Symbol]	[Symbol]	[Symbol]	ROADS, PARKING & CAMPING PADS (GRAVEL)
[Symbol]	[Symbol]	[Symbol]	HIKING TRAILS
[Symbol]	[Symbol]	[Symbol]	COMFORT STATION (WATER BORNE)
[Symbol]	[Symbol]	[Symbol]	COMFORT STATION (WATER BORNE W/VAULT)
[Symbol]	[Symbol]	[Symbol]	COMFORT STATION (VAULT)
[Symbol]	[Symbol]	[Symbol]	SHOWERHOUSE
[Symbol]	[Symbol]	[Symbol]	GROUP PICNIC SHELTER
[Symbol]	[Symbol]	[Symbol]	WELL
[Symbol]	[Symbol]	[Symbol]	SEWAGE TREATMENT FACILITY
[Symbol]	[Symbol]	[Symbol]	DUMP STATION
[Symbol]	[Symbol]	[Symbol]	BOAT LAUNCHING RAMP
[Symbol]	[Symbol]	[Symbol]	SWIMMING BEACH
[Symbol]	[Symbol]	[Symbol]	COURTESY DOCK
[Symbol]	[Symbol]	[Symbol]	AMPHITHEATER
[Symbol]	[Symbol]	[Symbol]	OVERLOOK
[Symbol]	[Symbol]	[Symbol]	PLAYGROUND EQUIPMENT
[Symbol]	[Symbol]	[Symbol]	FOUNTAIN AND/OR HYDRANT
[Symbol]	[Symbol]	[Symbol]	CONTROL STATION
[Symbol]	[Symbol]	[Symbol]	BULLETIN BOARD
[Symbol]	[Symbol]	[Symbol]	LIFT STATION
[Symbol]	[Symbol]	[Symbol]	FISH CLEANING STATION
[Symbol]	[Symbol]	[Symbol]	PLAY COURT
[Symbol]	[Symbol]	[Symbol]	FISHING PIER

RECREATIONAL FACILITIES			
SULPHUR SPRINGS R-10			
FACILITY	EXISTING	PROPOSED	FUTURE
COMFORT STATION (WATERBORNE)			
COMFORT STATION (VAULT)	1		
COMFORT STATION (W.B. W/VAULT)			
SHOWERHOUSE			
PICNIC SHELTER			
SEWAGE TREATMENT FACILITY			
CABIN			
VISITOR CENTER			
GROUP CAMP			
OVERFLOW CAMP			
CAMP SITES	4		
PICNIC SITES			
DUMP STATION			
BOAT LAUNCHING RAMP (LANES)	1(1)		
SWIMMING BEACH			
COURTESY DOCK			
AMPHITHEATER			
OVERLOOK			
PLAYGROUND EQUIPMENT			
FOUNTAIN AND/OR HYDRANT			
PLAY COURT			
CONTROL STATION			
FISH CLEANING STATION			
TRAIL			
BULLETIN BOARD			
LIFT STATION			
WELL			
FISHING PIER			

RECREATIONAL FACILITIES			
JOHNSON TRACT ES-E-2			
FACILITY	EXISTING	PROPOSED	FUTURE
COMFORT STATION (WATERBORNE)			
COMFORT STATION (VAULT)			
COMFORT STATION (W.B. W/VAULT)			
SHOWERHOUSE			
PICNIC SHELTER			
SEWAGE TREATMENT FACILITY			
CABIN			
VISITOR CENTER			
GROUP CAMP			
OVERFLOW CAMP			
CAMP SITES	2		
PICNIC SITES			
DUMP STATION			
BOAT LAUNCHING RAMP (LANES)			
SWIMMING BEACH			
COURTESY DOCK			
AMPHITHEATER			
OVERLOOK			
PLAYGROUND EQUIPMENT			
FOUNTAIN AND/OR HYDRANT			
PLAY COURT			
CONTROL STATION			
FISH CLEANING STATION			
TRAIL			
BULLETIN BOARD	1		
LIFT STATION			
WELL			
FISHING PIER			

US Army Corps of Engineers  
St. Louis District

DESIGNED BY	DRAWN BY	CHECKED BY	APPROVED BY	DATE
X	X	X	X	11-98

DESIGNED FOR UPDATED MASTER PLAN

PROJECT NO.	DATE	REVISION
10-10	11-98	1

ST. FRANCIS RIVER, MISSOURI

WAPPAPELLO LAKE

DESIGN MEMORANDUM NO. 504

REVISED MASTER PLAN

SULPHUR SPRINGS RECREATION AREA R-10

JOHNSON TRACT ES-E-2

LACONIA VEGETATIVE MANAGEMENT MR-VM-7

PLATE NO. 14



LEGEND

PROJECT BOUNDARY  
RECREATION POOL (359.74 NVGD)  
CONCESSION BOUNDARY

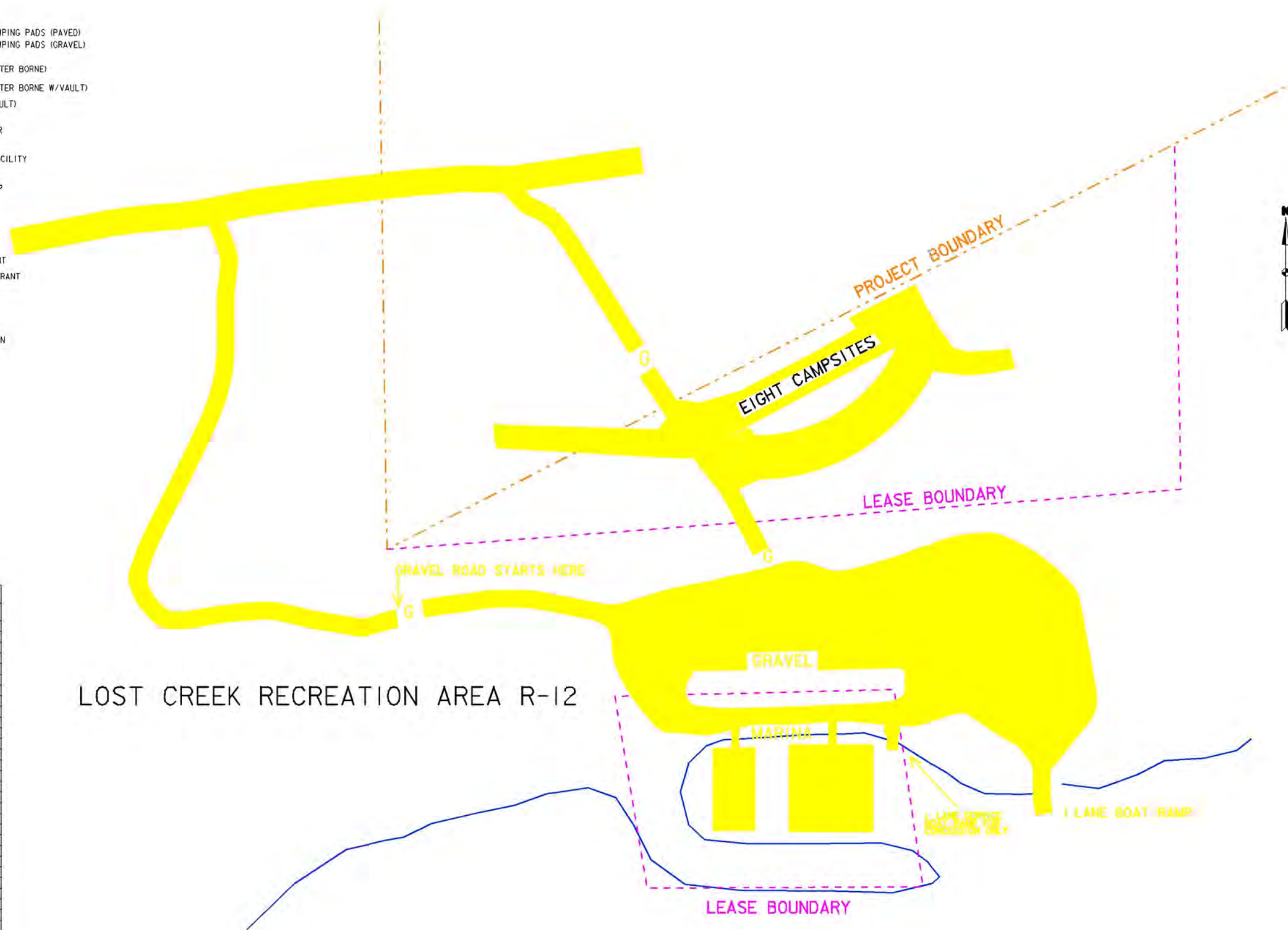
EXISTING  
PROPOSED  
FUTURE

ROADS, PARKING & CAMPING PADS (PAVED)  
ROADS, PARKING & CAMPING PADS (GRAVEL)  
HIKING TRAILS  
COMFORT STATION (WATER BORNE)  
COMFORT STATION (WATER BORNE W/VAULT)  
COMFORT STATION (VAULT)  
SHOWERHOUSE  
GROUP PICNIC SHELTER  
WELL  
SEWAGE TREATMENT FACILITY  
DUMP STATION  
BOAT LAUNCHING RAMP  
SWIMMING BEACH  
COURTESY DOCK  
AMPHITHEATER  
OVERLOOK  
PLAYGROUND EQUIPMENT  
FOUNTAIN AND/OR HYDRANT  
CONTROL STATION  
BULLETIN BOARD  
LIFT STATION  
FISH CLEANING STATION  
PLAY COURT  
FISHING PIER

RECREATIONAL FACILITIES			
LOST CREEK R-12			
FACILITY	EXISTING	PROPOSED	FUTURE
COMFORT STATION (WATERBORNE)			
COMFORT STATION (VAULT)			
COMFORT STATION (W.B. W/VAULT)			
SHOWERHOUSE			
PICNIC SHELTER			
SEWAGE TREATMENT FACILITY			
CABIN			
VISITOR CENTER			
GROUP CAMP			
OVERFLOW CAMP			
CAMPSITES		[8]	
PICNIC SITES			
DUMP STATION			
BOAT LAUNCHING RAMP (LANES)		[(1)]	
SWIMMING BEACH			
COURTESY DOCK			
AMPHITHEATER			
OVERLOOK			
PLAYGROUND EQUIPMENT			
FOUNTAIN AND/OR HYDRANT		[8]	
PLAY COURT			
CONTROL STATION			
FISH CLEANING STATION			
TRAIL			
BULLETIN BOARD			
LIFT STATION			
WELL			
FISHING PIER			

[ ] denotes concession facilities

## LOST CREEK RECREATION AREA R-12



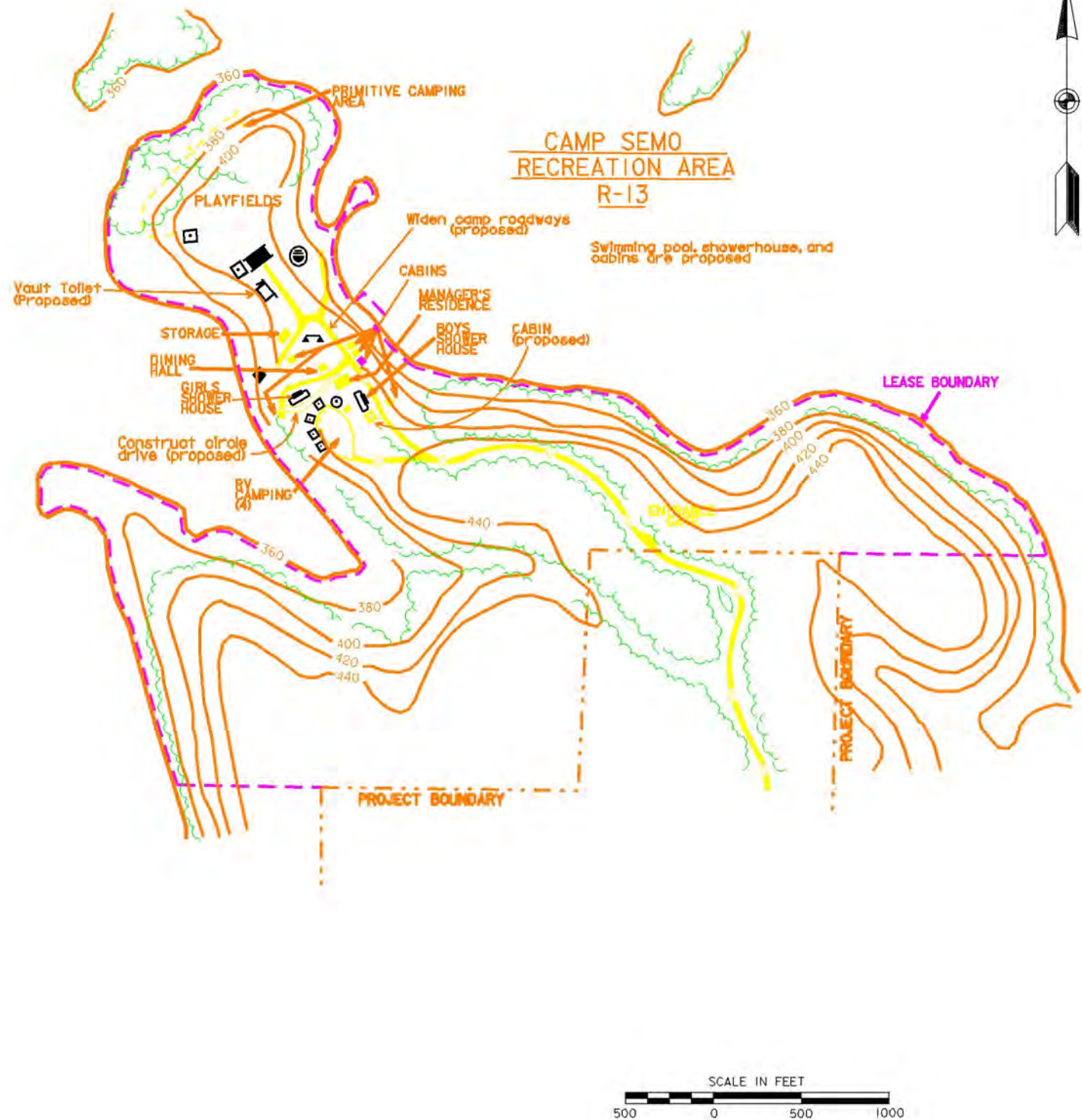
Rev	Date	By	Appr.
1	11-11-11	DA	DA
2	11-11-11	DA	DA
3	11-11-11	DA	DA
4	11-11-11	DA	DA
5	11-11-11	DA	DA
6	11-11-11	DA	DA
7	11-11-11	DA	DA
8	11-11-11	DA	DA
9	11-11-11	DA	DA
10	11-11-11	DA	DA
11	11-11-11	DA	DA
12	11-11-11	DA	DA
13	11-11-11	DA	DA
14	11-11-11	DA	DA
15	11-11-11	DA	DA
16	11-11-11	DA	DA
17	11-11-11	DA	DA
18	11-11-11	DA	DA
19	11-11-11	DA	DA
20	11-11-11	DA	DA
21	11-11-11	DA	DA
22	11-11-11	DA	DA
23	11-11-11	DA	DA
24	11-11-11	DA	DA
25	11-11-11	DA	DA
26	11-11-11	DA	DA
27	11-11-11	DA	DA
28	11-11-11	DA	DA
29	11-11-11	DA	DA
30	11-11-11	DA	DA
31	11-11-11	DA	DA
32	11-11-11	DA	DA
33	11-11-11	DA	DA
34	11-11-11	DA	DA
35	11-11-11	DA	DA
36	11-11-11	DA	DA
37	11-11-11	DA	DA
38	11-11-11	DA	DA
39	11-11-11	DA	DA
40	11-11-11	DA	DA
41	11-11-11	DA	DA
42	11-11-11	DA	DA
43	11-11-11	DA	DA
44	11-11-11	DA	DA
45	11-11-11	DA	DA
46	11-11-11	DA	DA
47	11-11-11	DA	DA
48	11-11-11	DA	DA
49	11-11-11	DA	DA
50	11-11-11	DA	DA
51	11-11-11	DA	DA
52	11-11-11	DA	DA
53	11-11-11	DA	DA
54	11-11-11	DA	DA
55	11-11-11	DA	DA
56	11-11-11	DA	DA
57	11-11-11	DA	DA
58	11-11-11	DA	DA
59	11-11-11	DA	DA
60	11-11-11	DA	DA
61	11-11-11	DA	DA
62	11-11-11	DA	DA
63	11-11-11	DA	DA
64	11-11-11	DA	DA
65	11-11-11	DA	DA
66	11-11-11	DA	DA
67	11-11-11	DA	DA
68	11-11-11	DA	DA
69	11-11-11	DA	DA
70	11-11-11	DA	DA
71	11-11-11	DA	DA
72	11-11-11	DA	DA
73	11-11-11	DA	DA
74	11-11-11	DA	DA
75	11-11-11	DA	DA
76	11-11-11	DA	DA
77	11-11-11	DA	DA
78	11-11-11	DA	DA
79	11-11-11	DA	DA
80	11-11-11	DA	DA
81	11-11-11	DA	DA
82	11-11-11	DA	DA
83	11-11-11	DA	DA
84	11-11-11	DA	DA
85	11-11-11	DA	DA
86	11-11-11	DA	DA
87	11-11-11	DA	DA
88	11-11-11	DA	DA
89	11-11-11	DA	DA
90	11-11-11	DA	DA
91	11-11-11	DA	DA
92	11-11-11	DA	DA
93	11-11-11	DA	DA
94	11-11-11	DA	DA
95	11-11-11	DA	DA
96	11-11-11	DA	DA
97	11-11-11	DA	DA
98	11-11-11	DA	DA
99	11-11-11	DA	DA
100	11-11-11	DA	DA

Rev	Date	By	Appr.
1	11-11-11	DA	DA
2	11-11-11	DA	DA
3	11-11-11	DA	DA
4	11-11-11	DA	DA
5	11-11-11	DA	DA
6	11-11-11	DA	DA
7	11-11-11	DA	DA
8	11-11-11	DA	DA
9	11-11-11	DA	DA
10	11-11-11	DA	DA
11	11-11-11	DA	DA
12	11-11-11	DA	DA
13	11-11-11	DA	DA
14	11-11-11	DA	DA
15	11-11-11	DA	DA
16	11-11-11	DA	DA
17	11-11-11	DA	DA
18	11-11-11	DA	DA
19	11-11-11	DA	DA
20	11-11-11	DA	DA
21	11-11-11	DA	DA
22	11-11-11	DA	DA
23	11-11-11	DA	DA
24	11-11-11	DA	DA
25	11-11-11	DA	DA
26	11-11-11	DA	DA
27	11-11-11	DA	DA
28	11-11-11	DA	DA
29	11-11-11	DA	DA
30	11-11-11	DA	DA
31	11-11-11	DA	DA
32	11-11-11	DA	DA
33	11-11-11	DA	DA
34	11-11-11	DA	DA
35	11-11-11	DA	DA
36	11-11-11	DA	DA
37	11-11-11	DA	DA
38	11-11-11	DA	DA
39	11-11-11	DA	DA
40	11-11-11	DA	DA
41	11-11-11	DA	DA
42	11-11-11	DA	DA
43	11-11-11	DA	DA
44	11-11-11	DA	DA
45	11-11-11	DA	DA
46	11-11-11	DA	DA
47	11-11-11	DA	DA
48	11-11-11	DA	DA
49	11-11-11	DA	DA
50	11-11-11	DA	DA
51	11-11-11	DA	DA
52	11-11-11	DA	DA
53	11-11-11	DA	DA
54	11-11-11	DA	DA
55	11-11-11	DA	DA
56	11-11-11	DA	DA
57	11-11-11	DA	DA
58	11-11-11	DA	DA
59	11-11-11	DA	DA
60	11-11-11	DA	DA
61	11-11-11	DA	DA
62	11-11-11	DA	DA
63	11-11-11	DA	DA
64	11-11-11	DA	DA
65	11-11-11	DA	DA
66	11-11-11	DA	DA
67	11-11-11	DA	DA
68	11-11-11	DA	DA
69	11-11-11	DA	DA
70	11-11-11	DA	DA
71	11-11-11	DA	DA
72	11-11-11	DA	DA
73	11-11-11	DA	DA
74	11-11-11	DA	DA
75	11-11-11	DA	DA
76	11-11-11	DA	DA
77	11-11-11	DA	DA
78	11-11-11	DA	DA
79	11-11-11	DA	DA
80	11-11-11	DA	DA
81	11-11-11	DA	DA
82	11-11-11	DA	DA
83	11-11-11	DA	DA
84	11-11-11	DA	DA
85	11-11-11	DA	DA
86	11-11-11	DA	DA
87	11-11-11	DA	DA
88	11-11-11	DA	DA
89	11-11-11	DA	DA
90	11-11-11	DA	DA
91	11-11-11	DA	DA
92	11-11-11	DA	DA
93	11-11-11	DA	DA
94	11-11-11	DA	DA
95	11-11-11	DA	DA
96	11-11-11	DA	DA
97	11-11-11	DA	DA
98	11-11-11	DA	DA
99	11-11-11	DA	DA
100	11-11-11	DA	DA

ST. FRANCIS RIVER, MISSOURI  
WAPPAPELLO LAKE

DESIGN MEMORANDUM NO. 504  
REVISED MASTER PLAN  
LOST CREEK RECREATION AREA R-12





RECREATIONAL FACILITIES*			
CAMP SEMO R-13			
FACILITY	EXISTING	PROPOSED	FUTURE
COMFORT STATION (WATERBORNE)			
COMFORT STATION (VAULT)		1	
COMFORT STATION (W.B. W/VAULT)			
SHOWERHOUSE	2	1	
PICNIC SHELTER	1		
SEWAGE TREATMENT FACILITY	1		
CABIN (UNITS)	6(6)	1	
VISITOR CENTER			
GROUP CAMP	1		
OVERFLOW CAMP			
CAMPSITES	4		
PICNIC SITES			
DUMP STATION			
BOAT LAUNCHING RAMP (LANES)			
SWIMMING POOL		1	
COURTESY DOCK			
AMPHITHEATER	1		
OVERLOOK			
PLAYGROUND EQUIPMENT	1		
FOUNTAIN AND/OR HYDRANT	8		
PLAY COURT	1		
CONTROL STATION			
FISH CLEANING STATION			
TRAIL	1		
BULLETIN BOARD			
LIFT STATION			
WELL	1		
FISHING PIER			

\* All Concession Facilities

LEGEND		
---	PROJECT BOUNDARY	
---	RECREATION POOL (359.74 MVD)	
---	CONCESSION BOUNDARY	
EXISTING	PROPOSED	FUTURE
ROADS, PARKING & CAMPING PADS (PAVED)	ROADS, PARKING & CAMPING PADS (GRAVEL)	HIKING TRAILS
COMFORT STATION (WATER BORNE)	COMFORT STATION (WATER BORNE W/VAULT)	COMFORT STATION (VAULT)
SHOWERHOUSE	GROUP PICNIC SHELTER	WELL
SEWAGE TREATMENT FACILITY	DUMP STATION	BOAT LAUNCHING RAMP
SWIMMING BEACH	COURTESY DOCK	AMPHITHEATER
OVERLOOK	PLAYGROUND EQUIPMENT	FOUNTAIN AND/OR HYDRANT
CONTROL STATION	BULLETIN BOARD	LIFT STATION
FISH CLEANING STATION	PLAY COURT	FISHING PIER

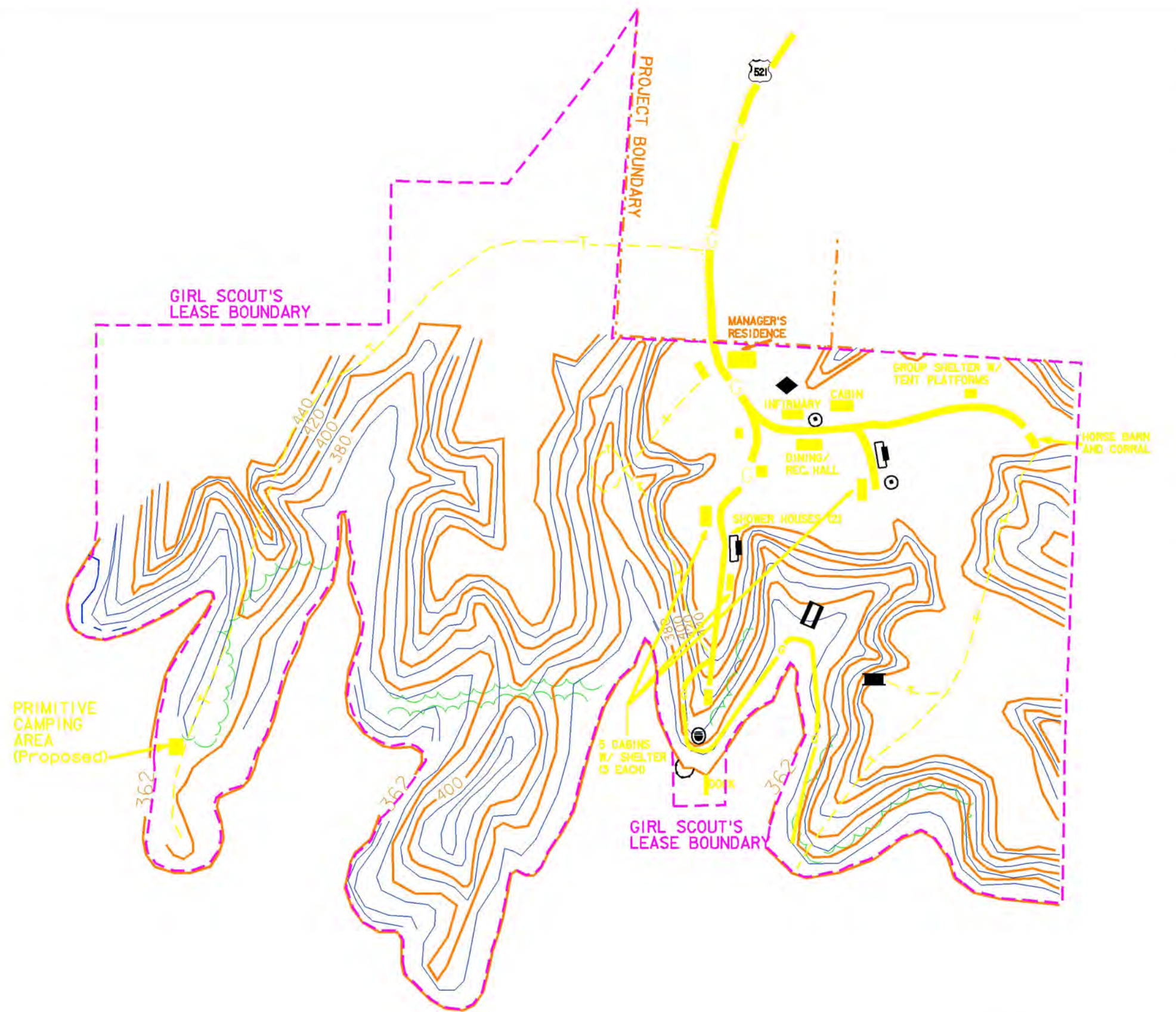
NO.	DATE	DESCRIPTION	APPROVED BY
1-99	1-99	RECEIVED FOR UPDATED MASTER PLAN	

DESIGNED BY	DRAWN BY	CHECKED BY	APPROVED BY
ST. FRANCIS RIVER, MISSOURI	WAPPAPPELLO LAKE	DESIGN MEMORANDUM NO. 504	REVISED MASTER PLAN









LEGEND

---	PROJECT BOUNDARY
---	RECREATION POOL (359.74 NVGD)
---	CONCESSION BOUNDARY

EXISTING	PROPOSED	FUTURE	
			ROADS, PARKING & CAMPING PADS (PAVED)
			ROADS, PARKING & CAMPING PADS (GRAVEL)
			HIKING TRAILS
			COMFORT STATION (WATER BORNE)
			COMFORT STATION (WATER BORNE W/VAULT)
			COMFORT STATION (VAULT)
			SHOWERHOUSE
			GROUP PICNIC SHELTER
			WELL
			SEWAGE TREATMENT FACILITY
			DUMP STATION
			BOAT LAUNCHING RAMP
			SWIMMING BEACH
			COURTESY DOCK
			AMPHITHEATER
			OVERLOOK
			PLAYGROUND EQUIPMENT
			FOUNTAIN AND/OR HYDRANT
			CONTROL STATION
			BULLETIN BOARD
			LIFT STATION
			FISH CLEANING STATION
			PLAY COURT
			FISHING PIER

RECREATIONAL FACILITIES			
Camp Latonka R-15			
FACILITY	EXISTING	PROPOSED	FUTURE
COMFORT STATION (WATERBORNE)			
COMFORT STATION (VAULT)	12		
COMFORT STATION (W.B. W/VAULT)			
SHOWERHOUSE	2		
PICNIC SHELTER	3		
SEWAGE TREATMENT FACILITY	1		
CABIN	15		
VISITOR CENTER			
GROUP CAMP	5		
OVERFLOW CAMP			
CAMPSITES (PRIMITIVE)		1	
PICNIC SITES			
DUMP STATION			
BOAT LAUNCHING RAMP (LANES)			
SWIMMING BEACH	1		
COURTESY DOCK	1		
AMPHITHEATER	1		
OVERLOOK			
PLAYGROUND EQUIPMENT			
FOUNTAIN AND/OR HYDRANT			
PLAY COURT	1		
CONTROL STATION			
FISH CLEANING STATION			
TRAIL	2		
BULLETIN BOARD			
LIFT STATION			
WELL	2		
FISHING PIER			

US Army Corps  
of Engineers  
St. Louis District

DESIGNED BY	DRAWN BY	CHECKED BY	APPROVED BY	DATE

U.S. ARMY ENGINEER DIVISION  
CORPS OF ENGINEERS  
ST. LOUIS, MISSOURI

UPPER MISSISSIPPI RIVER BASIN  
WAPPAPPELLO LAKE

ST. FRANCIS RIVER, MISSOURI  
WAPPAPPELLO LAKE

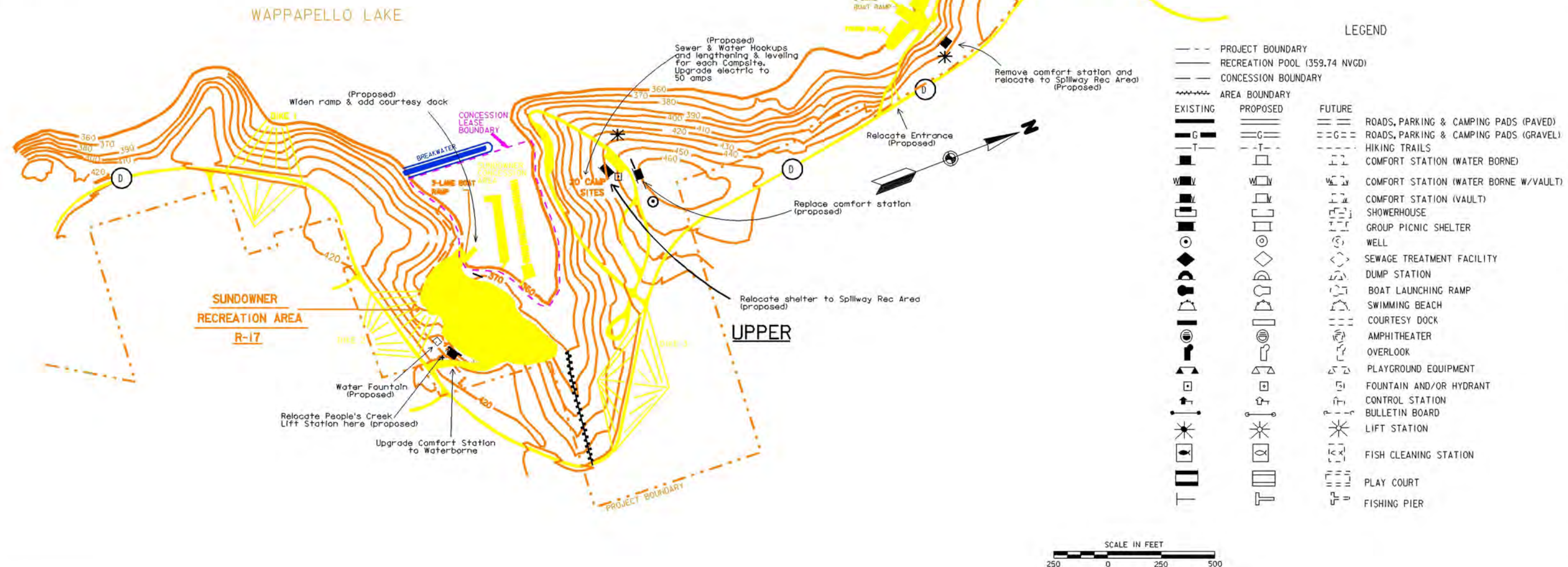
DESIGN MEMORANDUM NO. 504  
REVISED MASTER PLAN  
CAMP LATONKA RECREATION AREA R-15

PLATE NO. 18



RECREATIONAL FACILITIES			
PEOPLES CREEK R-16			
FACILITY	EXISTING	PROPOSED	FUTURE
COMFORT STATION (WATERBORNE)	4	-2	
COMFORT STATION (VAULT)			
COMFORT STATION (W.B. W/VAULT)			
SHOWERHOUSE	1		
PICNIC SHELTER	4	-3	
SEWAGE TREATMENT FACILITY			
CABIN			
VISITOR CENTER			
GROUP CAMP	1		
OVERFLOW CAMP			
CAMPSITES	57		
PICNIC SITES		2	
DUMP STATION		1	
BOAT LAUNCHING RAMP (LANES)	1(2)		
SWIMMING BEACH	1		
COURTESY DOCK	1		
AMPHITHEATER			
OVERLOOK			
PLAYGROUND EQUIPMENT		1	
FOUNTAIN AND/OR HYDRANT	12		
PLAY COURT			
CONTROL STATION	1		
FISH CLEANING STATION			
TRAIL			
BULLETIN BOARD	2		
LIFT STATION	6	-1	
WELL	2		
FISHING PIER	1		
SEWER & WATER HOOKUPS		20	

RECREATIONAL FACILITIES			
SUNDOWNER R-17			
FACILITY	EXISTING	PROPOSED	FUTURE
COMFORT STATION (WATERBORNE)		1	
COMFORT STATION (VAULT)	1	-1	
COMFORT STATION (W.B. W/VAULT)			
SHOWERHOUSE			
PICNIC SHELTER			
SEWAGE TREATMENT FACILITY			
CABIN			
VISITOR CENTER			
GROUP CAMP			
OVERFLOW CAMP			
CAMPSITES			
PICNIC SITES			
DUMP STATION			
BOAT LAUNCHING RAMP (LANES)	1(2)	(1)	
SWIMMING BEACH			
COURTESY DOCK		1	
AMPHITHEATER			
OVERLOOK			
PLAYGROUND EQUIPMENT			
FOUNTAIN AND/OR HYDRANT		1	
PLAY COURT			
CONTROL STATION			
FISH CLEANING STATION			
TRAIL			
BULLETIN BOARD	1		
LIFT STATION		1	
WELL			
FISHING PIER			



US Army Corps of Engineers  
St. Louis District

DESIGNED BY	DATE	11-98
DRAWN BY	DATE	
CHECKED BY	DATE	
REVIEWED BY	DATE	
APPROVED BY	DATE	
CHIEF, PROJECT MGMT	DATE	

U.S. ARMY ENGINEER DIVISION  
CORPS OF ENGINEERS  
ST. LOUIS, MISSOURI

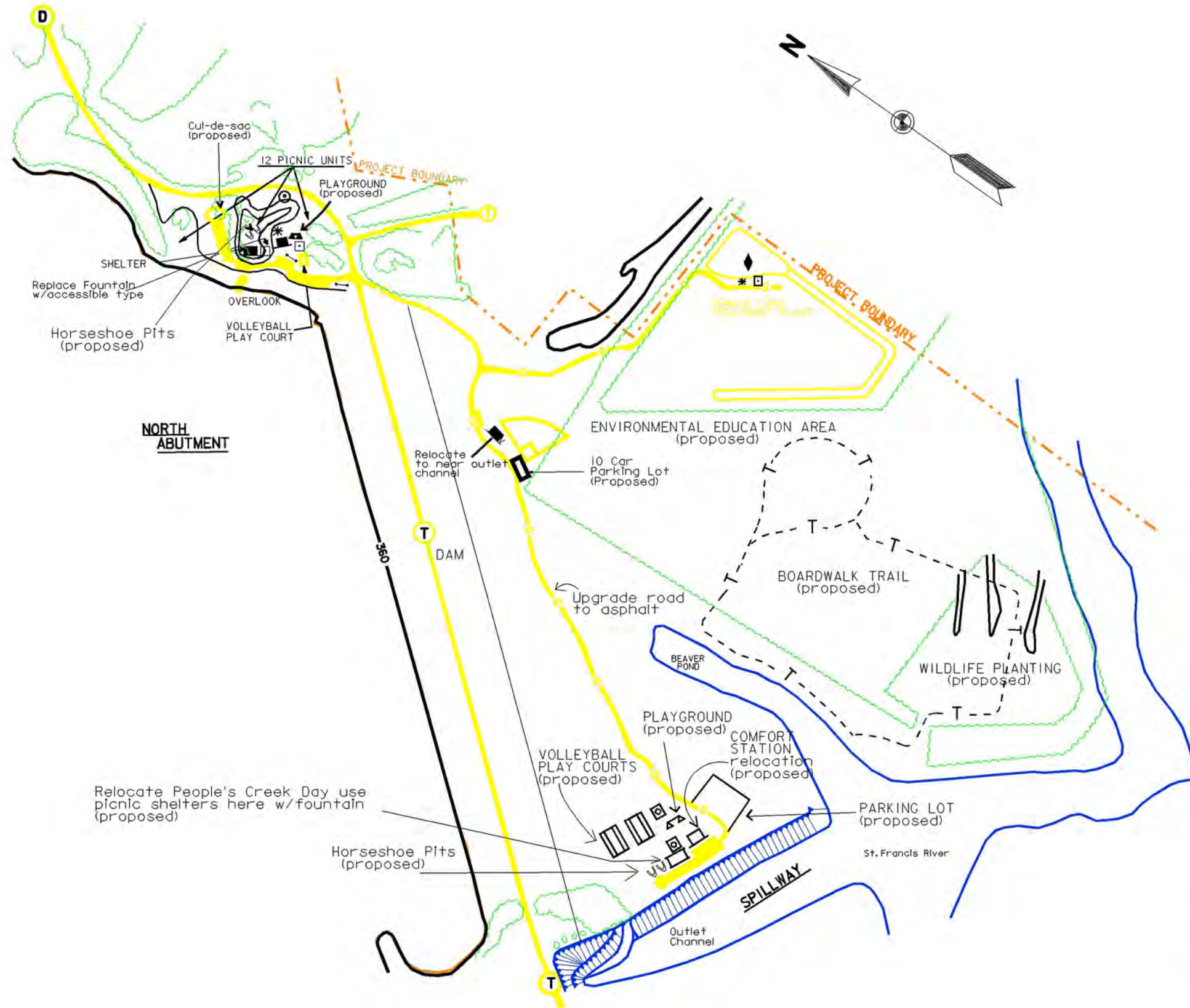
UPPER MISSISSIPPI RIVER BASIN  
WAPPAPELLO LAKE

ST. FRANCIS RIVER, MISSOURI  
WAPPAPELLO LAKE

DESIGN MEMORANDUM NO. 504  
REVISED MASTER PLAN  
PEOPLES CREEK RECREATION AREA R-16  
SUNDOWNER RECREATION AREA R-17  
DIKES 1, 2, 3 OP-2

PLATE NO. 19





RECREATIONAL FACILITIES			
EAGLE POINT R-18			
FACILITY	EXISTING	PROPOSED	FUTURE
COMFORT STATION (WATERBORNE)	1		
COMFORT STATION (VAULT)	1		
COMFORT STATION (W.B. W/VAULT)			
SHOWERHOUSE			
PICNIC SHELTER	1	1	
SEWAGE TREATMENT FACILITY	1		
CABIN			
VISITOR CENTER			
GROUP CAMP			
CAMPSITES			
PICNIC SITES	12		
DUMP STATION			
BOAT LAUNCHING RAMP (LANES)			
SWIMMING BEACH			
COURTESY DOCK			
AMPHITHEATER			
OVERLOOK	1		
PLAYGROUND EQUIPMENT		2	
FOUNTAIN AND/OR HYDRANT	3	3	
PLAY COURTS	1	2	
CONTROL STATION			
FISH CLEANING STATION			
TRAIL		1	
BULLETIN BOARD	2		
LIFT STATION	2		
WELL	1		
FISHING PIER			
HORSESHOE PITS		4	

LEGEND		
--- PROJECT BOUNDARY	EXISTING	PROPOSED
--- RECREATION POOL (359.74 NVGD)		
--- CONCESSION BOUNDARY		
		FUTURE
		ROADS, PARKING & CAMPING PADS (PAVED)
		ROADS, PARKING & CAMPING PADS (GRAVEL)
		HIKING TRAILS
		COMFORT STATION (WATER BORNE)
		COMFORT STATION (WATER BORNE W/VAULT)
		COMFORT STATION (VAULT)
		SHOWERHOUSE
		GROUP PICNIC SHELTER
		WELL
		SEWAGE TREATMENT FACILITY
		DUMP STATION
		BOAT LAUNCHING RAMP
		SWIMMING BEACH
		COURTESY DOCK
		AMPHITHEATER
		OVERLOOK
		PLAYGROUND EQUIPMENT
		FOUNTAIN AND/OR HYDRANT
		CONTROL STATION
		BULLETIN BOARD
		LIFT STATION
		FISH CLEANING STATION
		PLAY COURT
		FISHING PIER
		HORSESHOE PITS

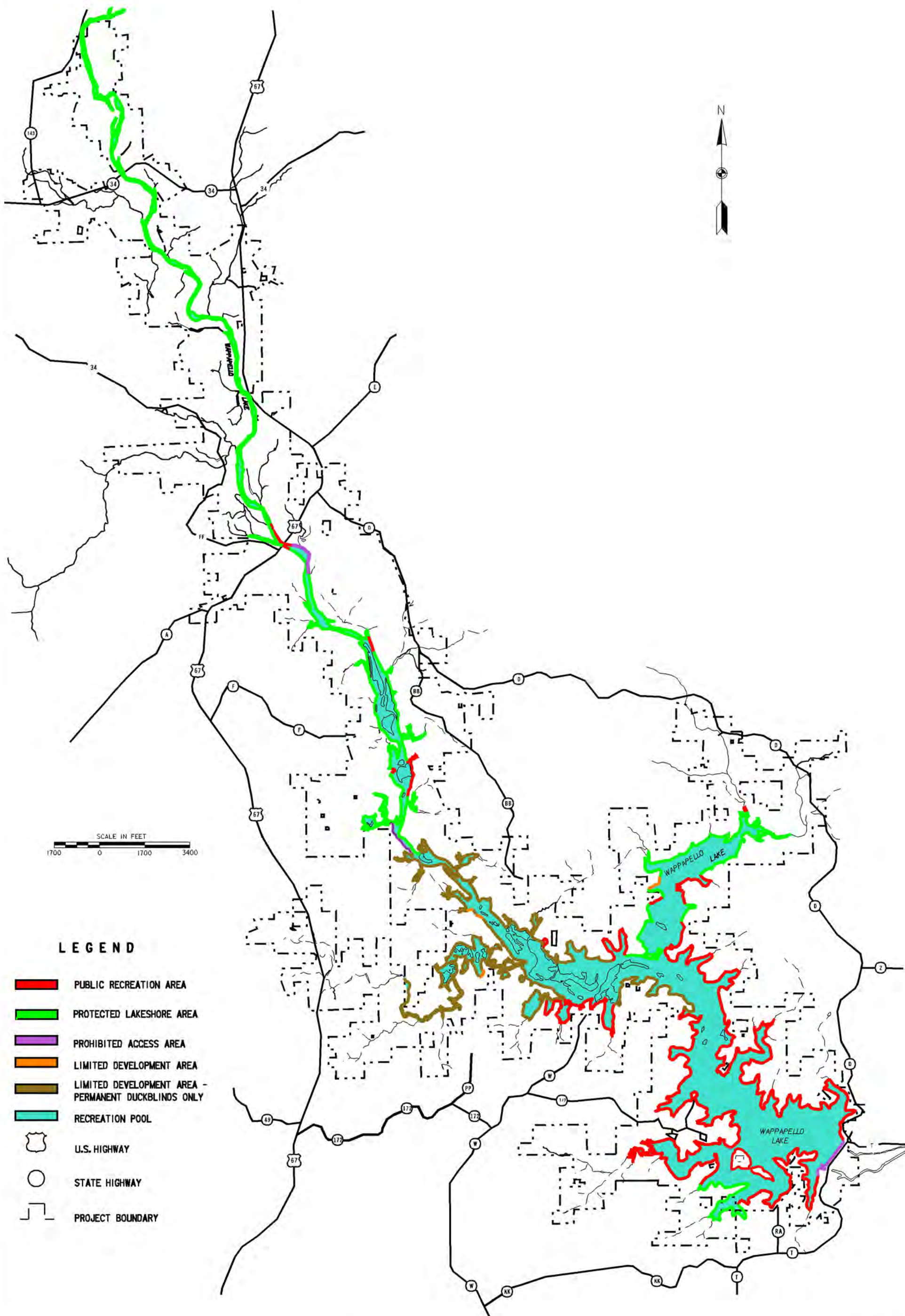


Facility	Designation	Remarks
COMFORT STATION (WATERBORNE)	1	
COMFORT STATION (VAULT)	1	
COMFORT STATION (W.B. W/VAULT)		
SHOWERHOUSE		
PICNIC SHELTER	1	
SEWAGE TREATMENT FACILITY	1	
CABIN		
VISITOR CENTER		
GROUP CAMP		
CAMPSITES		
PICNIC SITES	12	
DUMP STATION		
BOAT LAUNCHING RAMP (LANES)		
SWIMMING BEACH		
COURTESY DOCK		
AMPHITHEATER		
OVERLOOK	1	
PLAYGROUND EQUIPMENT		2
FOUNTAIN AND/OR HYDRANT	3	3
PLAY COURTS	1	2
CONTROL STATION		
FISH CLEANING STATION		
TRAIL		1
BULLETIN BOARD	2	
LIFT STATION	2	
WELL	1	
FISHING PIER		
HORSESHOE PITS		4

Facility	Designation	Remarks
COMFORT STATION (WATERBORNE)	1	
COMFORT STATION (VAULT)	1	
COMFORT STATION (W.B. W/VAULT)		
SHOWERHOUSE		
PICNIC SHELTER	1	
SEWAGE TREATMENT FACILITY	1	
DUMP STATION		
BOAT LAUNCHING RAMP		
SWIMMING BEACH		
COURTESY DOCK		
AMPHITHEATER		
OVERLOOK	1	
PLAYGROUND EQUIPMENT		2
FOUNTAIN AND/OR HYDRANT	3	3
PLAY COURTS	1	2
CONTROL STATION		
FISH CLEANING STATION		
PLAY COURT		
FISHING PIER		
HORSESHOE PITS		4

Facility	Designation	Remarks
COMFORT STATION (WATERBORNE)	1	
COMFORT STATION (VAULT)	1	
COMFORT STATION (W.B. W/VAULT)		
SHOWERHOUSE		
PICNIC SHELTER	1	
SEWAGE TREATMENT FACILITY	1	
DUMP STATION		
BOAT LAUNCHING RAMP		
SWIMMING BEACH		
COURTESY DOCK		
AMPHITHEATER		
OVERLOOK	1	
PLAYGROUND EQUIPMENT		2
FOUNTAIN AND/OR HYDRANT	3	3
PLAY COURTS	1	2
CONTROL STATION		
FISH CLEANING STATION		
PLAY COURT		
FISHING PIER		
HORSESHOE PITS		4





LEGEND

- PUBLIC RECREATION AREA
- PROTECTED LAKESHORE AREA
- PROHIBITED ACCESS AREA
- LIMITED DEVELOPMENT AREA
- LIMITED DEVELOPMENT AREA - PERMANENT DUCKBLINDS ONLY
- RECREATION POOL
- U.S. HIGHWAY
- STATE HIGHWAY
- PROJECT BOUNDARY

PLATE NO.21

ST. FRANCIS RIVER, MISSOURI  
WAPPAPELLO LAKE

DESIGN MEMORANDUM NO. 504  
REVISED MASTER PLAN  
SHORELINE MANAGEMENT PLAN

U.S. ARMY ENGINEER DIVISION  
CORPS OF ENGINEERS  
ST. LOUIS, MISSOURI

UPPER MISSISSIPPI RIVER BASIN  
WAPPAPELLO LAKE

Designed by:  
X  
Drawn by:  
X  
Reviewed by:  
X  
APPROVED:  
Chief, Project Mgt

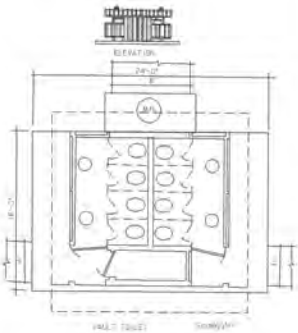
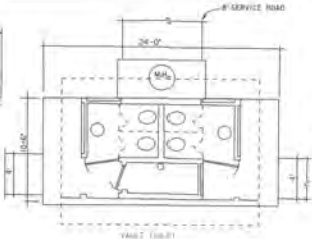
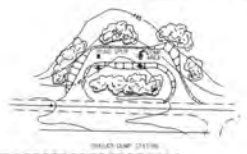
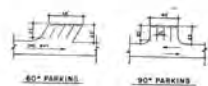
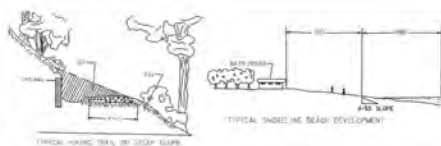
Date: 9-99

SUBMITTED:  
Diane L. Kornish  
Chief, Environmental  
& Economic Analysis Br  
File name:  
H:\MASTERPLAN\WAPP\TEMP\WAPP21A.DGN  
Plot date: 27-JUL-1999 14:00  
Plot scale: 1"=1700'  
SOL. NO. DACW43- -8-

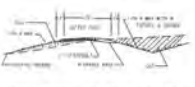
PM-EA	REVISOR FOR UPDATED MASTER PLAN	2-00	
Symbol	Description	Date	Appr.
	Revisions		

US Army Corps  
of Engineers  
St. Louis District

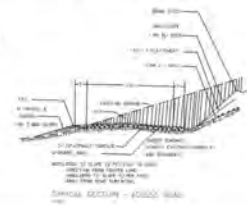
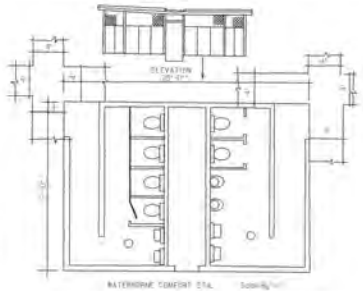
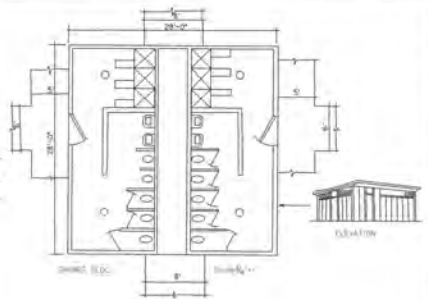




TYPICAL SECTION - CIRCULATION ROAD



TYPICAL SECTION - BAY & RAMP DIAGRAM



TYPICAL SECTION - ACCESS ROAD

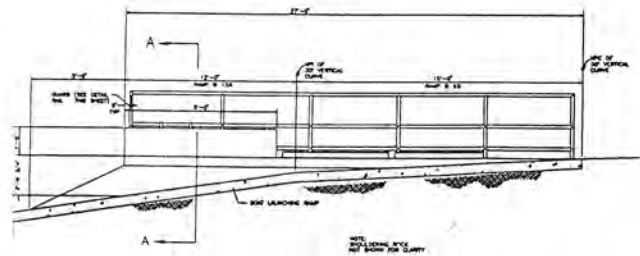
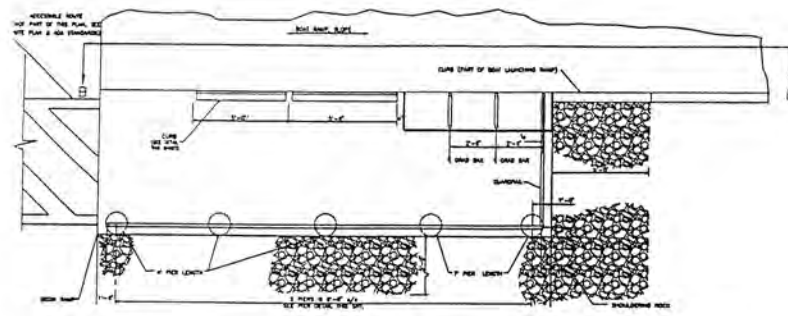
NO.	DESCRIPTION	DATE	BY	CHKD.
1	DESIGNED BY			
2	DRAWN BY			
3	CHECKED BY			
4	APPROVED BY			
5	DATE			

DESIGNED BY	DATE
DRAWN BY	DATE
CHECKED BY	DATE
APPROVED BY	DATE
DATE	

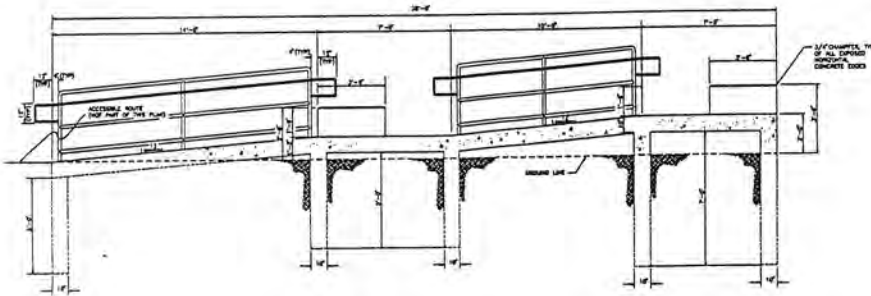
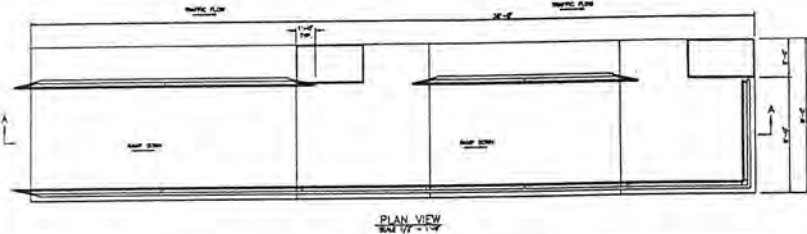
U.S. ARMY ENGINEERING DISTRICT	ST. LOUIS DISTRICT
ST. LOUIS DISTRICT	ST. LOUIS DISTRICT
ST. LOUIS DISTRICT	ST. LOUIS DISTRICT
ST. LOUIS DISTRICT	ST. LOUIS DISTRICT

ST. LOUIS DISTRICT	ST. LOUIS DISTRICT
ST. LOUIS DISTRICT	ST. LOUIS DISTRICT
ST. LOUIS DISTRICT	ST. LOUIS DISTRICT
ST. LOUIS DISTRICT	ST. LOUIS DISTRICT

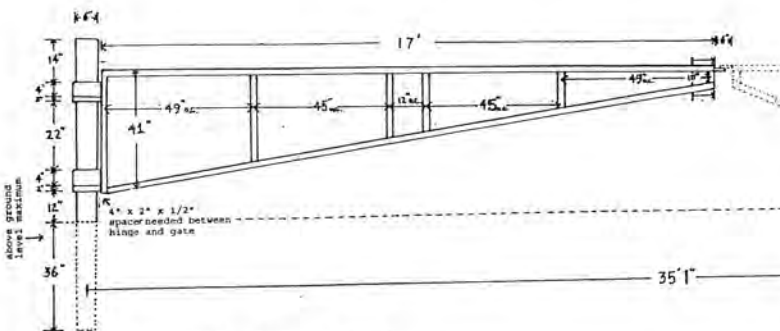




ACCESSIBLE BOAT LAUNCHING RAMP



ACCESSIBLE LOADING RAMP

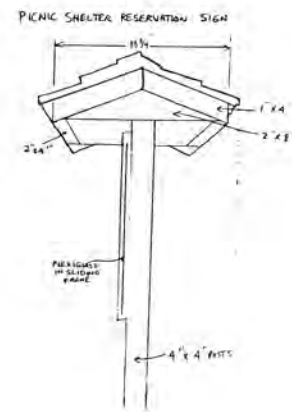
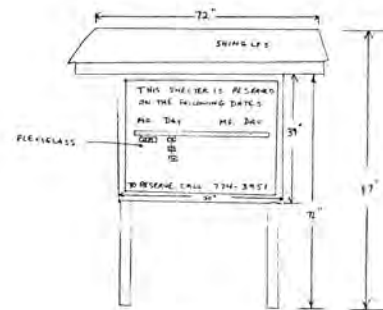


ALL STEEL FOR GATES WILL BE 2"x2"x 1/4" SQUARE TUBING

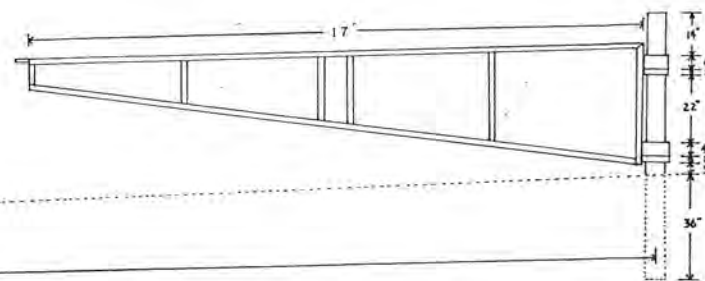
Scale 1/4" = 5'

Appendix B-4

BARRICADE/GATE



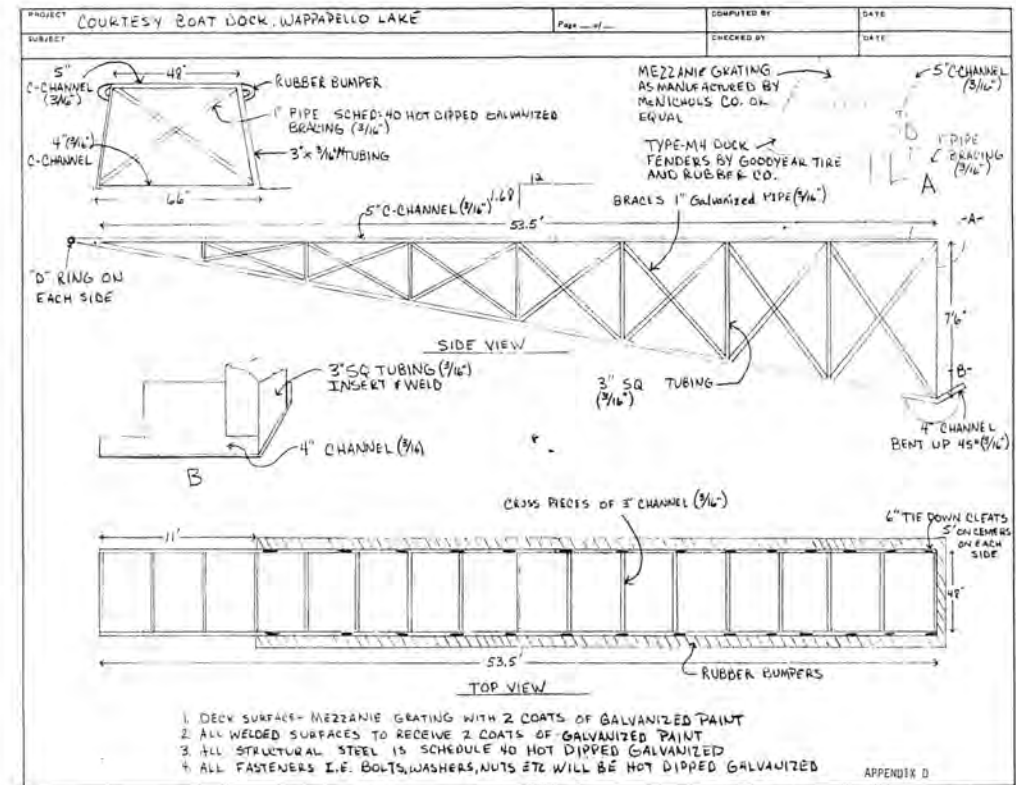
BULLETIN BOARD



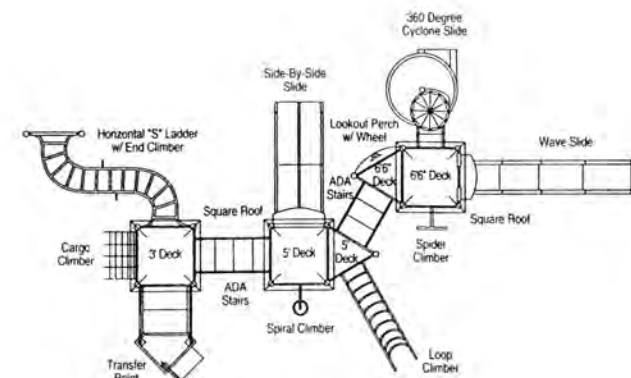
ALL OPENINGS ON GATES WILL BE CAPPED

Scale 1/8" = 5'

Appendix B-5



COURTESY BOAT DOCK



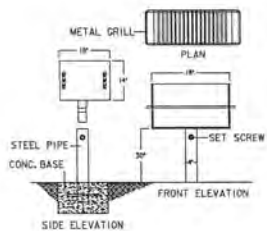
TYPICAL PLAYGROUND

REVISED FOR UPDATED MASTER PLAN	DESCRIPTION	REVISIONS
1-79	DATE	APP.
1-80	DATE	APP.
1-81	DATE	APP.
1-82	DATE	APP.
1-83	DATE	APP.
1-84	DATE	APP.
1-85	DATE	APP.
1-86	DATE	APP.
1-87	DATE	APP.
1-88	DATE	APP.
1-89	DATE	APP.
1-90	DATE	APP.
1-91	DATE	APP.
1-92	DATE	APP.
1-93	DATE	APP.
1-94	DATE	APP.
1-95	DATE	APP.
1-96	DATE	APP.
1-97	DATE	APP.
1-98	DATE	APP.
1-99	DATE	APP.
2-00	DATE	APP.

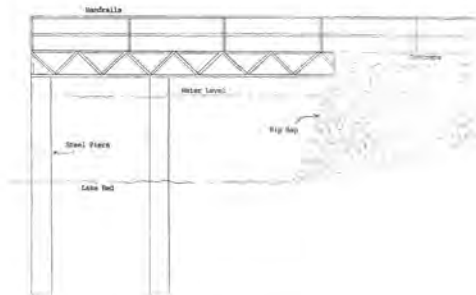
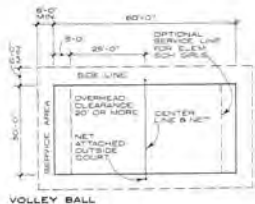
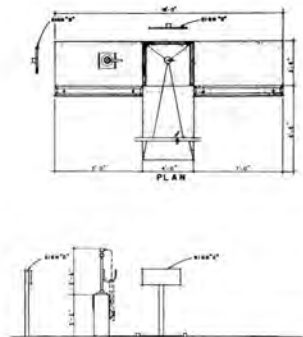
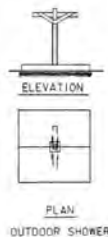
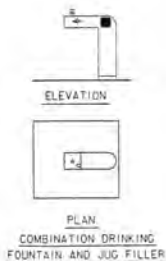
DATE	DESIGNED BY	DRAWN BY	CHECKED BY	REVIEWED BY	APPROVED BY	CHIEF, PROJECT
1-79	DESIGNED BY	DRAWN BY	CHECKED BY	REVIEWED BY	APPROVED BY	CHIEF, PROJECT
1-80	DESIGNED BY	DRAWN BY	CHECKED BY	REVIEWED BY	APPROVED BY	CHIEF, PROJECT
1-81	DESIGNED BY	DRAWN BY	CHECKED BY	REVIEWED BY	APPROVED BY	CHIEF, PROJECT
1-82	DESIGNED BY	DRAWN BY	CHECKED BY	REVIEWED BY	APPROVED BY	CHIEF, PROJECT
1-83	DESIGNED BY	DRAWN BY	CHECKED BY	REVIEWED BY	APPROVED BY	CHIEF, PROJECT
1-84	DESIGNED BY	DRAWN BY	CHECKED BY	REVIEWED BY	APPROVED BY	CHIEF, PROJECT
1-85	DESIGNED BY	DRAWN BY	CHECKED BY	REVIEWED BY	APPROVED BY	CHIEF, PROJECT
1-86	DESIGNED BY	DRAWN BY	CHECKED BY	REVIEWED BY	APPROVED BY	CHIEF, PROJECT
1-87	DESIGNED BY	DRAWN BY	CHECKED BY	REVIEWED BY	APPROVED BY	CHIEF, PROJECT
1-88	DESIGNED BY	DRAWN BY	CHECKED BY	REVIEWED BY	APPROVED BY	CHIEF, PROJECT
1-89	DESIGNED BY	DRAWN BY	CHECKED BY	REVIEWED BY	APPROVED BY	CHIEF, PROJECT
1-90	DESIGNED BY	DRAWN BY	CHECKED BY	REVIEWED BY	APPROVED BY	CHIEF, PROJECT
1-91	DESIGNED BY	DRAWN BY	CHECKED BY	REVIEWED BY	APPROVED BY	CHIEF, PROJECT
1-92	DESIGNED BY	DRAWN BY	CHECKED BY	REVIEWED BY	APPROVED BY	CHIEF, PROJECT
1-93	DESIGNED BY	DRAWN BY	CHECKED BY	REVIEWED BY	APPROVED BY	CHIEF, PROJECT
1-94	DESIGNED BY	DRAWN BY	CHECKED BY	REVIEWED BY	APPROVED BY	CHIEF, PROJECT
1-95	DESIGNED BY	DRAWN BY	CHECKED BY	REVIEWED BY	APPROVED BY	CHIEF, PROJECT
1-96	DESIGNED BY	DRAWN BY	CHECKED BY	REVIEWED BY	APPROVED BY	CHIEF, PROJECT
1-97	DESIGNED BY	DRAWN BY	CHECKED BY	REVIEWED BY	APPROVED BY	CHIEF, PROJECT
1-98	DESIGNED BY	DRAWN BY	CHECKED BY	REVIEWED BY	APPROVED BY	CHIEF, PROJECT
1-99	DESIGNED BY	DRAWN BY	CHECKED BY	REVIEWED BY	APPROVED BY	CHIEF, PROJECT
2-00	DESIGNED BY	DRAWN BY	CHECKED BY	REVIEWED BY	APPROVED BY	CHIEF, PROJECT

ST. FRANCIS RIVER, MISSOURI WAPPAPELLO LAKE	DESIGN MEMORANDUM NO. 504 REVISED MASTER PLAN PLANS, ELEVATIONS, AND SECTIONS
ST. FRANCIS RIVER, MISSOURI WAPPAPELLO LAKE	DESIGN MEMORANDUM NO. 504 REVISED MASTER PLAN PLANS, ELEVATIONS, AND SECTIONS

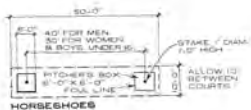




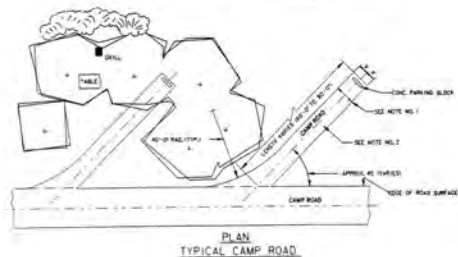
GRILL



PLAN  
HANDICAPPED FISHING DOCK



HORSHOES



PLAN  
TYPICAL CAMP ROAD

DESIGNED BY	ST. LOUIS DISTRICT
DRAWN BY	ST. LOUIS DISTRICT
CHECKED BY	ST. LOUIS DISTRICT
APPROVED BY	ST. LOUIS DISTRICT
DATE	1960
PROJECT	UPPER MISSISSIPPI RIVER BASIN
LOCATION	MISSISSIPPI RIVER BASIN
SCALE	AS SHOWN



