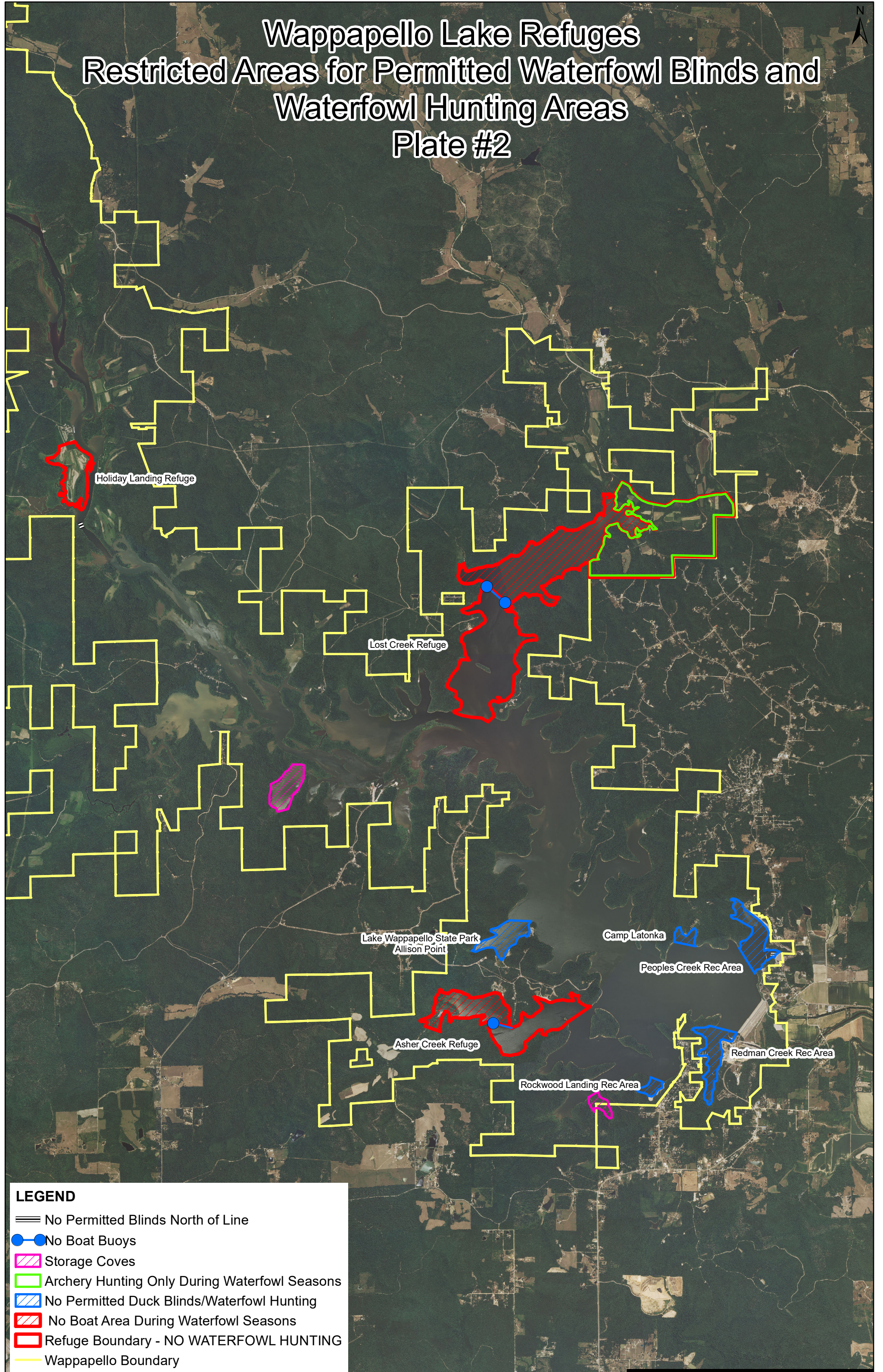




Wappapello Lake Refuges Restricted Areas for Permitted Waterfowl Blinds and Waterfowl Hunting Areas Plate #2



LEGEND





- ≡ No Permitted Blinds North of Line
- No Boat Buoys
- ▨ Storage Coves
- ▭ Archery Hunting Only During Waterfowl Seasons
- ▨ No Permitted Duck Blinds/Waterfowl Hunting
- ▨ No Boat Area During Waterfowl Seasons
- ▭ Refuge Boundary - NO WATERFOWL HUNTING
- Wappapello Boundary

HOLIDAY LANDING WATERFOWL REFUGE

Holiday Landing Resort/Marina

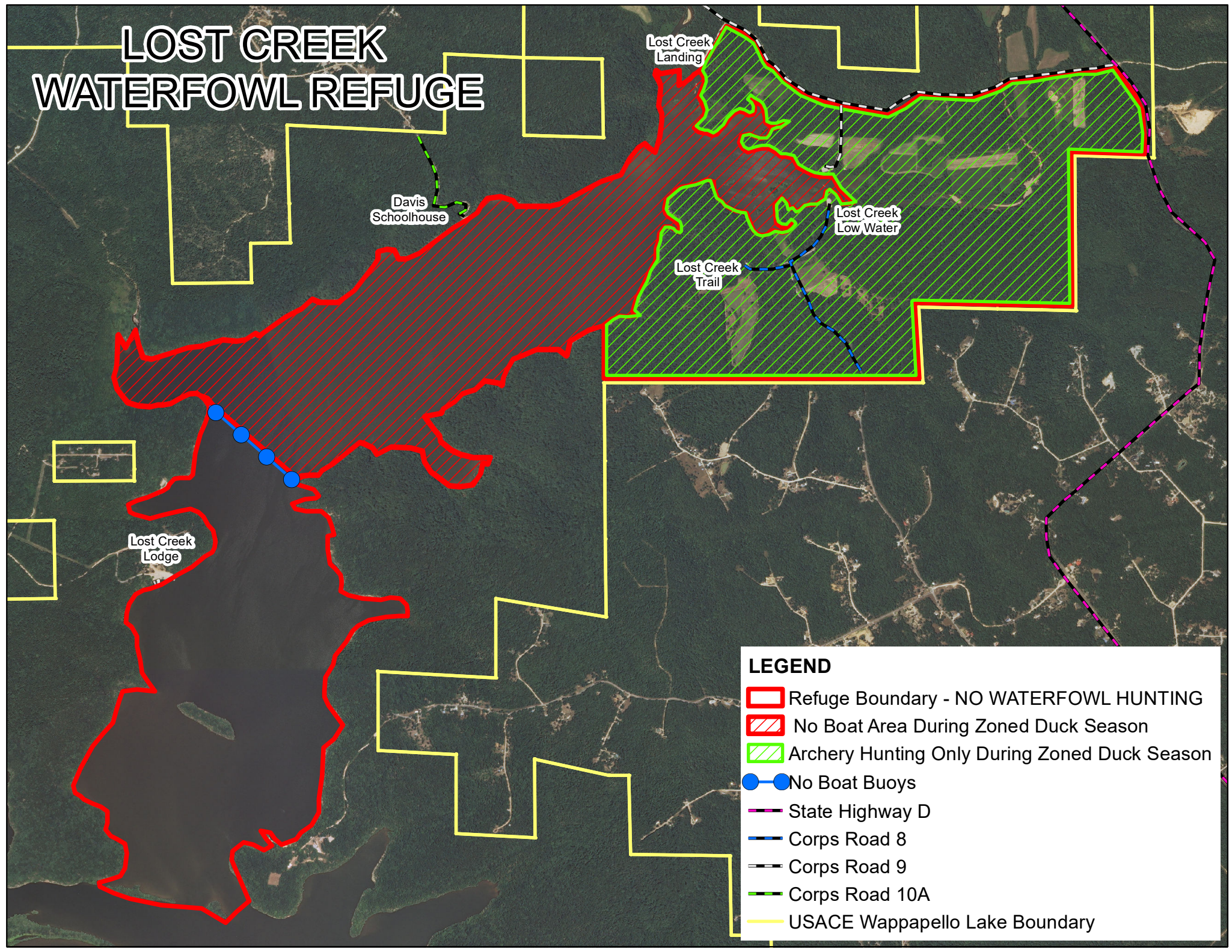
Holiday Landing
Boat Ramp

LEGEND

-  Refuge Boundary
-  Watchable Wildlife Blind
-  Access Path
-  Corps Road 30

NO ACCESS DURING WATERFOWL SEASONS
Unless viewing wildlife from the provided Watchable Wildlife Blind,
Visitors **MUST** remain inside blind while observing wildlife, and
Visitors **MUST** remain on access path to and from blind.

LOST CREEK WATERFOWL REFUGE



Davis Schoolhouse

Lost Creek Landing

Lost Creek Low Water

Lost Creek Trail

Lost Creek Lodge





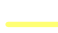
LEGEND

- Refuge Boundary - NO WATERFOWL HUNTING
- No Boat Area During Zoned Duck Season
- Archery Hunting Only During Zoned Duck Season
- No Boat Buoys
- State Highway D
- Corps Road 8
- Corps Road 9
- Corps Road 10A
- USACE Wappapello Lake Boundary

ASHER CREEK WATERFOWL REFUGE

Lake Wappapello State Park

LEGEND

-  Refuge Boundary - NO WATERFOWL HUNTING
-  No Boat Area During Zoned Duck Season
-  Lake Wappapello State Park - NO HUNTING
-  No Boat Buoys
-  USACE Wappapello Lake Boundary