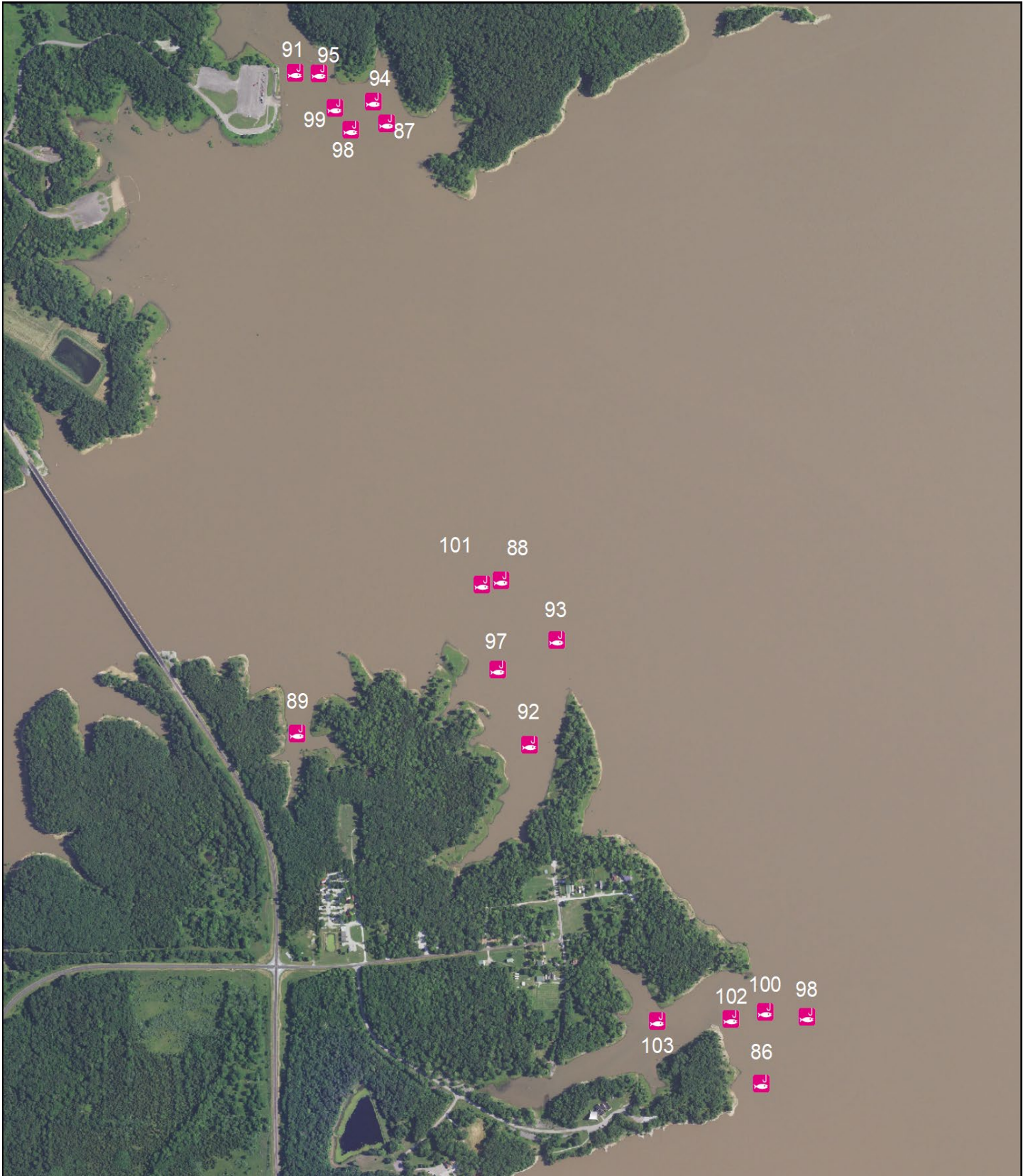


Highway 107/ Florida-Fish Habitat Map



US Army Corps
of Engineers®

**Clarence Cannon Dam and Mark Twain Lake Fish Habitat
Project, Structure Locations-April 2024**

Highway 107/ Flordia-Fish Habitat Map

Area	ID	Latitude	Longitude
Hwy 107	86	W 91 46.840'	N 39 29.335'
Hwy 107	87	W 91 47.033'	N 39 29.422'
Hwy 107	88	W 91 47.527'	N 39 30.654'
Hwy 107	89	W 91 47.348'	N 39 30.031'
Hwy 107	90	W 91 47.703'	N 39 29.820'
Hwy 107	91	W 91 47.596'	N 39 30.646'
Hwy 107	92	W 91 47.653'	N 39 30.723'
Hwy 107	93	W 91 47.268'	N 39 29.803'
Hwy 107	94	W 91 47.217'	N 39 29.945'
Hwy 107	95	W 91 47.552'	N 39 30.682'
Hwy 107	96	W 91 47.055'	N 39 29.407'
Hwy 107	97	W 91 47.697'	N 39 30.721'
Hwy 107	98	W 91 47.624'	N 39 30.676'
Hwy 107	99	W 91 47.326'	N 39 29.904'
Hwy 107	100	W 91 47.704'	N 39 29.821'
Hwy 107	101	W 91 46.755'	N 39 29.421'
Hwy 107	102	W 91 47.205'	N 39 29.943'
Hwy 107	103	W 91 47.624'	N 39 30.684'
Hwy 107	104	W 91 46.854'	N 39 29.436'
Hwy 107	105	W 91 46.843'	N 39 29.320'
Hwy 107	106	W 91 47.355'	N 39 30.020'
Hwy 107	107	W 91 46.900'	N 39 29.427'
Hwy 107	108	W 91 47.575'	N 39 30.645'

NOTE: Several ID locations listed above are not shown on the aerial map due to close proximity of other structures placed the same day.



US Army Corps
of Engineers®

**Clarence Cannon Dam and Mark Twain Lake Fish Habitat
Project, Structure Locations-April 2024**