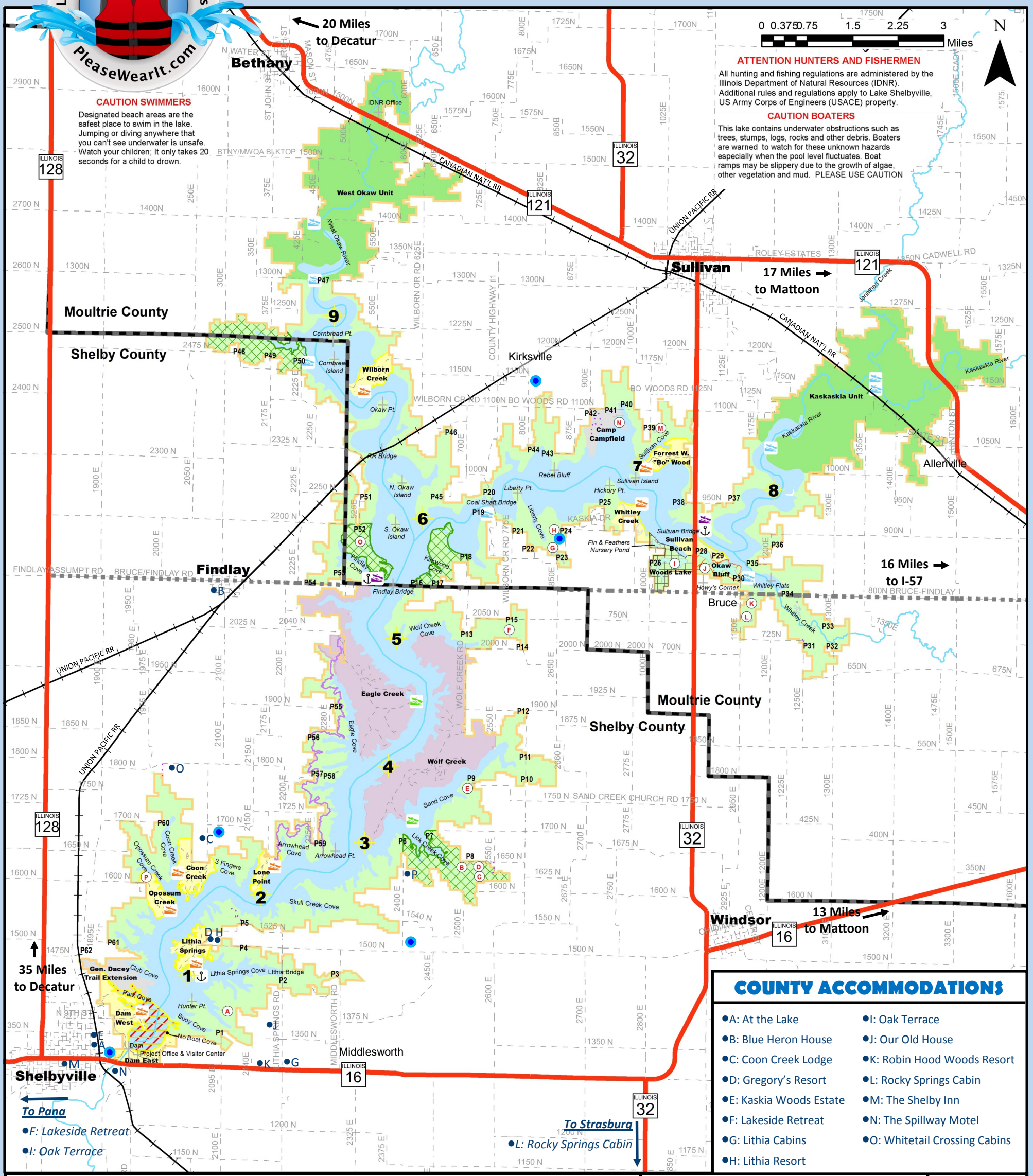




# LAKE SHELBYVILLE MAP



### COUNTY ACCOMMODATIONS

●A: At the Lake	●I: Oak Terrace
●B: Blue Heron House	●J: Our Old House
●C: Coon Creek Lodge	●K: Robin Hood Woods Resort
●D: Gregory's Resort	●L: Rocky Springs Cabin
●E: Kaskia Woods Estate	●M: The Shelby Inn
●F: Lakeside Retreat	●N: The Spillway Motel
●G: Lithia Cabins	●O: Whitetail Crossing Cabins
●H: Lithia Resort	

### LEGEND

USACE Boat Ramp	No Firearm Hunting or Trapping	<b>STANDARD LAKE MARKERS</b>
State Boat Ramp	No Hunting Boundary	Diamond: Danger
Primitive Boat Ramp	Dog Training Areas	Diamond with Cross: Boats Keep Out!
Marina Boat Ramp	Recreation Area (Federal)	Circle: Controlled area-explanation within circle
Marina	Multiple Use Area (Federal)	Square or Rectangle: Gives information.
Normal Summer Pool (El. 599.7)	Shelbyville Fish & Wildlife Mgmt Area (IDNR)	Water Tower
Railroad	State Park	
Roads	Public Land (Federal)	
Shelby/Moultrie County Line	Lake Shelbyville Landmarks	
USACE Property Boundary	Chief Illini Trail	
Restricted Area-Waterfowl Hunting Only	Hunter & Fisherman Parking Lots	
No Waterfowl Hunting Zone	Fishing Ponds	

### Hunter & Fisherman Parking Lots

P1	Hunter Lake
P2	Lithia Bridge
P3	Old Lithia Springs
P4	Compartment 5
P5	Compartment 7
P6	Woodard Road
P7	Sand Creek Road
P8	Gun Club Road
P9	South Sand Creek Road
P10	South Sand Creek Bridge
P11	North Sand Creek
P12	Gravel Pit
P13	Wolf Creek Bridge
P14	Ree's Ridge
P15	Wolf Road
P16	Findlay Bridge
P17	Kirkwood Access
P18	Houser
P19	Coal Shaft South
P20	Coal Shaft North
P21	Liberty Access
P22	Liberty Cemetery
P23	Beaver Lake
P24	Beaver Lake North
P25	South Shores
P26	Woods Lake West
P27	Woods Lake East
P28	Okaw Bluff West
P29	Okaw Bluff East
P30	Bruce West
P31	Hugh's Ridge
P32	South Crooked Bridge
P33	North Crooked Bridge
P34	Whitley Creek
P35	Bruce East
P36	Bruce East 2
P37	East Slaughterhouse
P38	West Slaughterhouse
P39	McClure Pond
P40	Camp Camfield Bridge
P41	Camp Camfield
P42	Camp Camfield West
P43	Toad Road
P44	Turkey Lane
P45	Kirksville Access
P46	Ken Kenny's
P47	Eden Street
P48	Ivan's Bean Field
P49	South Wilborn Bridge
P50	Johnson's Bluff
P51	Wright Cemetery
P52	North Findlay Access
P53	South Findlay Access
P54	Findlay West
P55	Eagle Creek Cove Road
P56	Yantis Road (4A Gate)
P57	Mahoney Road (Lot 1)
P58	Mahoney Road (Lot 2)
P59	Arrowhead Campground
P60	Busy Bee Road
P61	Deer Trail (Country Club)
P62	Ag Trail Access

### Fishing Ponds

●A	Hunter Lake
●B	Stone Pond
●C	South Shield Pond
●D	North Shield Pond
●E	Sand Pond
●F	Wolf Pond
●G	Beaver Lake
●H	Mary's Pond
●I	Woods Lake
●J	Hidden Pond
●K	Bruce Pond
●L	Bragg Pond
●M	McClure Pond
●N	Campfield Pond
●O	North Findlay Pond
●P	Opossum Pond

### Boundary Signs

### WILDLIFE REFUGE

CLOSED TO ENTRY  
NO HUNTING  
OR TRAPPING  
OR REMOVAL OF  
NATURAL RESOURCES

**In Case of Emergency: DIAL 9-1-1**

Text **LAKEALERT** to **888-777** for Public Safety Messages!

**The BIG 870 AM Newstalk WTIM 96.1 FM**

**NEW COUNTRY FM WSVZ 98.3 Shelbyville/Effingham 101.1 Taurineville**

**GENUINE COUNTRY 94.3 WMKR Yesterday and Today!**

**groovy 97.3 WRAN**