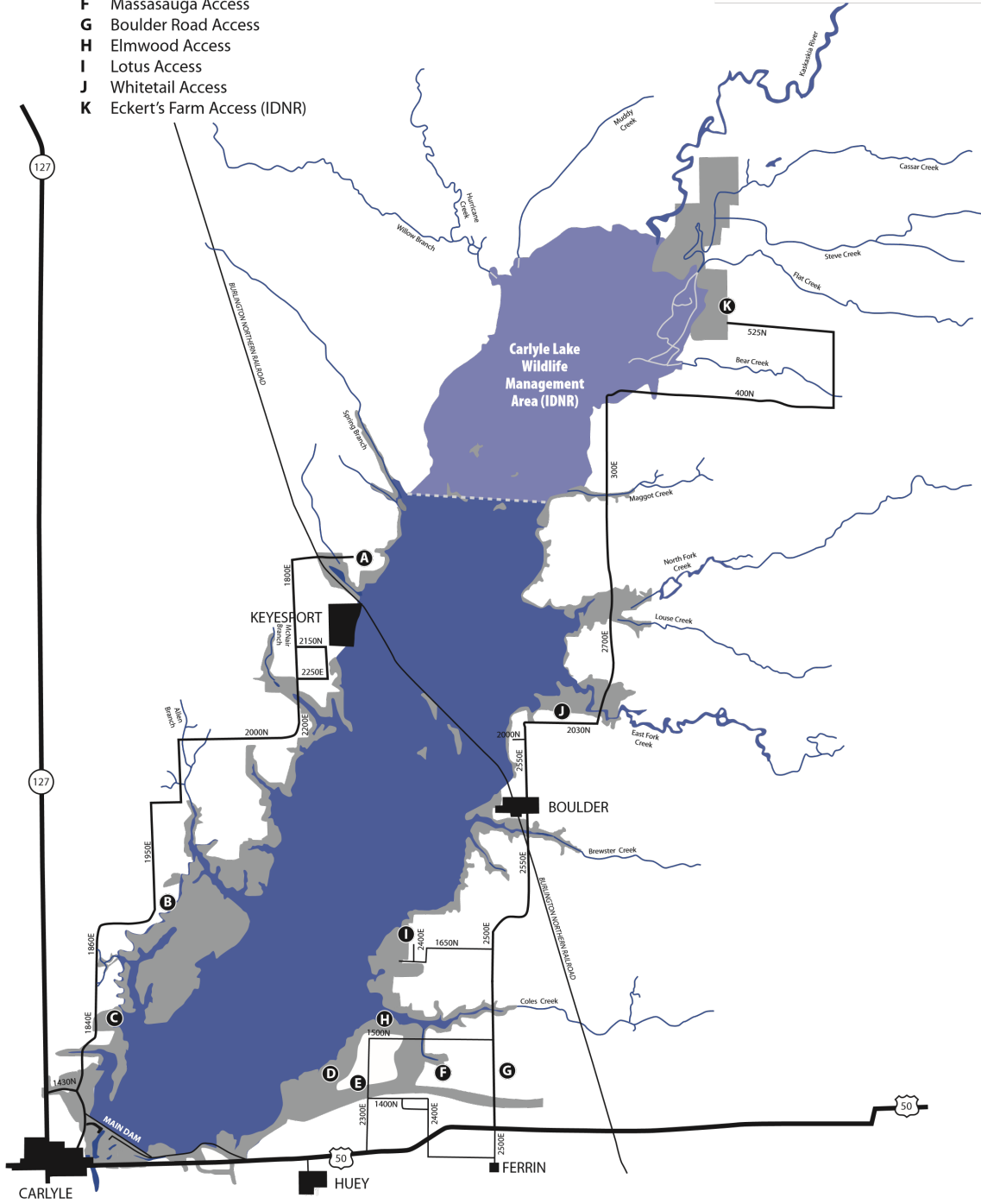
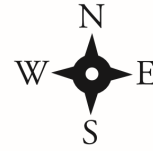




Carlyle Lake Dove Fields

- A Bobwhite Access
- B Eldon Hazlet State Park
- C James W. Hawn Access
- D Steins Access
- E Mourning Dove Access
- F Massasauga Access
- G Boulder Road Access
- H Elmwood Access
- I Lotus Access
- J Whitetail Access
- K Eckert's Farm Access (IDNR)



CARLYLE LAKE DOVE FIELDS

<u>LOCATION</u>	<u>FIELD CROP</u>	<u>ACREAGE</u>	<u>OPENING DATES</u>	<u>HOURS</u>
A. Bobwhite	Sunflowers	17 acres	Sept. 1-5 Sept. 6	Noon-Sunset Sunrise-Sunset
B. Hazlet State Park (IDNR)*	Wheat	10 acres	Sept. 1-5	Noon-5:00 pm
	Millet	10 acres	Sept. 6	Sunrise-Sunset
C. James Hawn	Millet	3 acres	Sept. 1-5	Noon-Sunset
	Soybeans	5 acres	Sept. 6	Sunrise-Sunset
D. Steins	Sunflowers	8 acres	Sept. 3-5 Sept. 6	Noon-Sunset Sunrise-Sunset
E. Mourning Dove/ Saddle Dam III/ Massasauga	Sunflowers	15 acres	Sept. 1-5	Noon-Sunset
	Corn	12 acres	Sept. 6	Sunrise-Sunset
	Millet	8 acres		
H. Elmwood	Sunflowers	9 acres	Sept. 1-5	Noon-Sunset
	Corn	4 acres	Sept. 6	Sunrise-Sunset
I. Lotus	Sunflowers	22 acres	Sept. 3-5	Noon-Sunset
	Corn	4 acres	Sept. 6	Sunrise-Sunset
	Beans	2 acres		
	Millet	3 acres		
K. Eckert's / Cox's Dove Field (IDNR)*	Sunflowers	17 acres	Sept. 1	Sunrise - Sunset

*(IDNR) requires **STEEL SHOT / NON TOXIC SHOT**

For more information please contact: Carlyle Lake Project Office (618) 594-2484
 Hazlet State Park Office (618) 594-3015
 Carlyle Lake SFWMA (618) 425-3533