

Wildlife

The areas around Carlyle Lake are home to an abundance of wildlife, including the Eastern Massasauga rattlesnake, an Illinois endangered species. The shy, retreating nature and small size of this snake, averaging only 24 inches, make it hard to find.

The Illinois Department of Natural Resources, in conjunction with the U.S. Army Corps of Engineers and the U.S. Fish & Wildlife Service, has initiated a study to understand the habits, range and habitat necessary to sustain this protected species. Should you come upon a Massasauga, please do not kill it or disturb it, but report it to the park staff, a campground host or call (618) 594-3015. Your cooperation is vital for their survival.

Illinois Department of Natural Resources

One Natural Resources Way
Springfield, Illinois 62702-1271

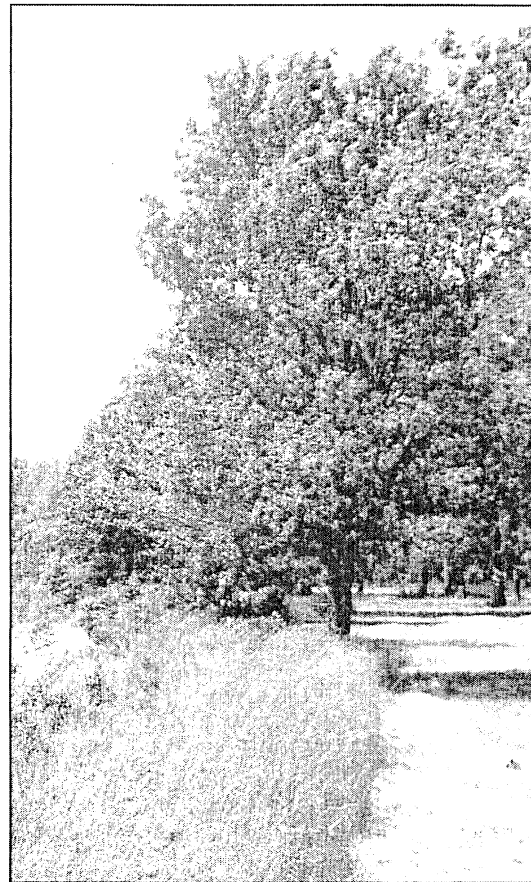
Equal opportunity to participate in programs of the Illinois Department of Natural Resources (IDNR) and those funded by the U.S. Fish and Wildlife Service and other agencies is available to all individuals regardless of race, sex, national origin, disability, age, religion or other non-merit factors. If you believe you have been discriminated against, contact the funding source's civil rights office and/or the Equal Employment Opportunity Officer, DNR, One Natural Resources Way, Springfield, IL 62702-1271; (217) 785-0067; TTY (217) 782-9175.

Distributed by the Illinois Department of Natural Resources, One Natural Resources Way, Springfield, IL 62702-1271. Telephone (217) 782-6302. TTY (217) 782-9175.

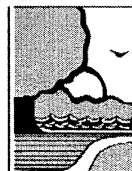
Printed by Authority of the State of Illinois • 10/11 • IOCI 12-0228



State of Illinois
Illinois Department of Natural Resources



Eldon Hazlet State Park Hiking Trail Guide



Illinois Department of
Natural Resources
Eldon Hazlet State Park

Trail Descriptions

Cherokee Trail [3.0 miles]

Trail to cemetery is wheelchair accessible.



Three miles of winding trails take you through a mature oak-hickory forest, over four foot-bridges and along the shoreline for great views of the lake. Loop 1 (1.5 miles) has been developed as a tree identification trail and connects to the Osage Youth Campground. Loop 2 (.75 mile) passes by views of the lake. Loop 3 (.75 mile) passes by Burnside Cemetery, a pre-Civil War cemetery where some of Clinton County's original settlers are buried.

Kaskaskian Trail [2.5 miles]

This trail is named in honor of the Mississippian Native Americans who inhabited the Kaskaskia River Valley from approximately A.D. 900-1300. The Kaskaskian Trail leads the hiker through a variety of natural habitats and offers excellent wildlife viewing opportunities. The trailhead is at the park office, although the trail may be accessed from many areas including the Illini Campground, Osage Youth Campground, Pawnee Trail and the Apache Day Use Area.

Illini Trail [1.5 miles]

Trail is wheelchair accessible.

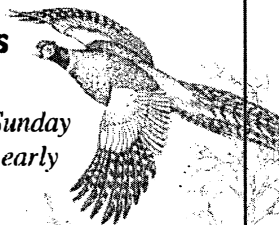


Located across from the campground store, this trail winds through a restored prairie and loops around the Homer Guthrie Fishing Pond. The fishing pond is open to bank fishing.

All Hiking Trails Are Closed

*on Wednesday through Sunday
from early November to early
January due to the*

**Controlled Pheasant
Hunting Program**



Map Trail Key

	Distance
C Cherokee Trail	3.0 Miles
K Kaskaskian Trail	2.5 Miles
I Illini Trail	1.5 Miles
P Pawnee Trail	1.0 Mile
E Eagle Trail75 Mile
W Wetland Trail	0.5 Mile
B Bluestem Trail25 Mile

-  Boat Ramp
-  Camping
-  Cottages
-  Fishing
-  Parking
-  Picnic Area
-  Picnic Shelter/Day Use Area
-  Restrooms
-  Scenic Overlook
-  Site Office
-  Swimming Pool
-  Viewing Area
-  Wheelchair Accessible

ALL HIKING TRAILS

are closed Wednesday through Sunday from early November to early January due to a controlled pheasant hunting program in the park during these dates.

Eldon Hazlet State Park Hiking Trails

