

CEMVS-DE

MEMORANDUM FOR CEMVP-PD

18 FEB 2014

SUBJECT: Supplement No. 4, Carlyle Lake Master Plan, Kaskaskia River, Illinois.

Supplement No. 4 to the Carlyle Lake Master Plan, January 2014:

Approved X

Disapproved _____



CHRISTOPHER G. HALL
COL, EN
Commanding

CEMVP-PD

MEMORANDUM THRU

CEMVS-OD-A *ASW 11/23/14*
CEMVS-OD-T *SEW 1/24*
CEMVS-OD-X *1/24*
CEMVS-OD *1/24*
CEMVS-RE *1/24*
CEMVS-OC *1/30/14*
CEMVS-DC *1/24*
CEMVS-DP *1/24*
CEMVS-DX *1/24*
CEMVS-DD *1/24*

Estimates were generated by Carlyle Field staff. EC did not participate nor develop estimates. Reviewed with the team. Francis/Lin Dell, co. Planning team used to help prioritize work. It will be brought in. 2/10/14

FOR Commander, St. Louis District

SUBJECT: Supplement No. 4, Carlyle Lake Master Plan, Design Memorandum 10, Kaskaskia River, Illinois

1. The attached Carlyle Lake Project Master Plan supplement is submitted for review and approval (Enclosure 1).
2. This supplement requests approval for the replacement of existing facilities and the addition of new facilities to address safety concerns, customer demand, and accessibility at the Carlyle Lake Project. Replacement and modifications of these facilities will lead to lower O&M costs, higher visitation, and higher customer satisfaction.
3. The technical review has been completed and the checklist and certification are attached (Enclosure 2).
4. It is requested that approval be granted to provide the facilities and complete the actions described in the attached supplement. The general cost estimate including contingencies for the proposed actions is \$7,149,724.
5. In accordance with ER 1130-2-550, paragraph 3-2 h., approval of this supplement by the District Commander is requested. Please return the attached approval memorandum after signing (Enclosure 3).
6. P.O.C. for this effort is Francis Walton, x8487.

Encls

Brian Johnson

BRIAN JOHNSON
Chief, Environmental Branch


CEMVP-PD-C

Date: 9 January 2014

MEMORANDUM FOR RECORD - TECHNICAL REVIEW COMPLETE

SUBJECT: Quality Control Review, Carlyle Lake Master Plan Supplement 4.

In accordance with the District's Quality Control Management Plan, the Quality Control Review for the Carlyle Lake Master Plan Supplement 4 has been completed and all comments are resolved. We certify the completion of this review.


Francis Walton,
Outdoor Recreation Planner
Technical Reviewer

SUMMERS.JON.D.1
230430582

Digitally signed by SUMMERS.JON.D.1 (230430582)
DN: cn=SUMMERS.JON.D.1, o=US Government, ou=DoD, email=SUMMERS.JON.D.1@SUMMERS.JON.D.1, c=US
Date: 2014.01.09 14:04:51 -0500

Jon Summers,
Assistant Operations Manager Lake Shelbyville
Technical Reviewer

Technical Checklist

Project: Carlyle Lake Master Plan Supplement ____

Date 1-23-14

Item	Yes	No	N/A	Comments
GENERAL				
1. AUTHORITY:				
a. Does the activity/project conform with authorized project purposes?	X			
2. SCOPE:				
a. Have all significant resources been adequately considered?	X			
b. Have all foreseeable short-term and long-term needs been adequately considered?	X			
c. Have implications outside the activity/project area been properly addressed?	x			
3. OBJECTIVE OF MASTER PLAN:				
a. Are master plan objectives clearly stated?	X			
4. COORDINATION:				
a. Was there adequate coordination with appropriate State, local, and Federal agencies, and were their views considered in formulating the recommended plan?	X			
b. Has coordination conformed with law, executive orders, and agreements between agencies; and, if not, has the departure been satisfactorily explained?	X			
c. Have the proper preservation, conservation, historical, and scientific interests been consulted, and were their views given adequate consideration during plan development?	X			
5. PUBLIC INVOLVEMENT:				
a. Was the scoping process in accordance with EP 1130-2-550, Sect. 3-4 d.?	X			
b. Was adequate public involvement conducted during the planning process to fully inform interested parties and to ascertain their views?	X			
c. Have implications associated with the recommended plan been properly addressed?	X			
d. Has there been adequate response to public concerns?	X			

Technical Checklist

Project: Carlyle Lake Master Plan Supplement ____

Date 1-23-14

Item	Yes	No	N/A	Comments
e. Has the public involvement process been documented, and a discussion of the process prepared?	X			
6. POLICY ASPECTS:				
a. Does the proposed project conform to policies established in ER 1165-2-400 (Water Resource Policies and Authorities)	X			
8. LEGAL/INSTITUTIONAL:				
a. Have the legal and institutional obstacles to project implementation been considered and has a plan been developed to overcome them?	X			
9. REPORT REVIEW:				
a. Does the report format follow the most recent guidance?	X			
b. Have all major technical review issues and resolutions been documented?	X			
c. Is the technical review certification signature page included?	X			
10. FINANCIAL ANALYSIS				
a. If applicable, does the report state the benefit-cost ratio (BCR) for the recommended plan assuming existing conditions prevail over the period of analysis?		X		
b. Has the economic evaluation of recreational development been adequately determined?	X			
11. RECREATION/AESTHETIC				
a. Have the necessary recreational coordination been conducted in accordance with the NFCA of 1944, FPWA of 1965, and the WRDA of 1986, the Land and Water Conservation Fund Act, and appropriate Corps regulations?	X			
b. Has the assessment of adverse effects dealing with recreation and aesthetic conditions been considered in each alternative plan?	X			

Supplement No. 4
Carlyle Lake Master Plan
January 2014

Technical Checklist

Project: Carlyle Lake Master Plan Supplement ____

Date 1-23-14

Item	Yes	No	N/A	Comments
c. Has coordination with the State Department of Culture, Recreation, and Tourism been conducted, and the State Comprehensive Outdoor Recreation Plan been consulted concerning proposed recreational development.			X	
d. Has appropriate NED unit day values been assessed via Economic Guidance Memorandum, Unit Day Values for recreation? Are current fiscal year rates being used?			X	

Designed by SUMMERS JON.D. 1230430582
Valid for use only with approval
SUMMERS JON.D. 1230430582[®]

CEMVP-PD-C

MEMORANDUM FOR FILE

SUBJECT: Supplement No. 4, Carlyle Lake Master Plan, Design Memorandum 10, Kaskaskia River, Illinois

1. References:
 - a. Carlyle Lake Master Plan, Design Memorandum No. 10, approved 1997 (includes Supplements 1-3)
 - b. ER 1130-2-550, Project Master Plans and Operational Management Plans: Chapter 3, 18 January 2013. This ER addresses master planning requirements.
 - c. EM 1110-1-400, Engineering and Design, Recreation Facility and Customer Service Standards, 1 November 2004. This EM addresses the standards for recreation facilities. All recreation facilities proposed in this supplement will meet the standards described in EM 1110-1-400.
 - d. ER 1110-2-400, Engineering and Design, Design of Recreation Sites, Areas and Facilities, 31 May 1988. This ER includes general concepts on recreation planning.
 - e. EM 1110-2-410, Design of Recreation Areas and Facilities, Access and Circulation, December 1982. This EM addresses road and trail planning.
 - f. ER 1130-2-500, Project Operations, Partners and Support, 13 March 2013. This ER addresses funding considerations.
 - g. EP 310-1-6a, EP 310-1-6b, Sign Standards Manual, Vols. 1&2.
 - h. Carlyle Lake Operational Management Plan, updated 1998, revised 2006.
 - i. Americans with Disabilities Act (ADA) standards and guidelines for accessible design, 2004.
 - j. Architectural Barriers Act (ABA) standards and guidelines for accessible design, 2004.
 - k. Accessibility Guidelines for Outdoor Developed Areas, 26 September 2013.
2. Purpose of Supplement: The purpose of this supplement is to request approval for proposed actions that will improve visitor safety at boat ramps and provide a transition plan ADA/ABA compliance. The current conditions of the breakwaters do not provide adequate safety during periods of high water or heavy wind action. Currently, the Carlyle Lake Project does not have a transition plan that addresses the accessibility of all recreational Corp facilities. Any issues that can achieve compliance through day-to-day O&M funding are priorities. As funding becomes available, projects that can be completed will be addressed.
3. Project Description: Proposed actions included in this supplement are described in the following paragraphs.

I. Dam West Recreation Area

Existing Conditions:

This area includes a 4-lane boat ramp, a 2-lane high water ramp, a 200 ft. breakwater at elevation 452.0, a seawall at elevation 447.0, a courtesy boat dock, fish cleaning station and two large parking areas. The Dam West Recreation Area is one of the highest used recreation areas in the United States with over 1 million visitors annually. Due to its convenient location, numerous fishing tournaments launch from this area including the Illinois High School Association Bass State Fishing Finals and the FLW Outdoors Central Conference Championship. The boat ramp faces east and is exposed to northerly and eastern winds. The existing breakwater provides some protection from southerly and southeasterly winds only.

The current elevation of the seawall, 447.0 ft, is too low. During high water events the seawall becomes a boating hazard and could do extensive damage to boats. There is no accessible boat loading facility at the ramp. Recreational facilities are not compliant with ABA regulations.

Five alternatives have been identified to address protection of the boat launching and loading area:

Alternative	Proposal	Elevation (NGVD)	Cost Estimate
#1	Modify breakwater east 200 feet, north 600 ft., and then angled 150 ft. to the northwest	454.0	\$2,113,323.70
#2	Modify breakwater east 200 feet, north 600 ft., and then angled 150 ft. to the northwest	456.0	\$2,270,122.70
#3	Modify breakwater east 200 feet, north 600 ft., and then angled 150 ft. to the northwest	458.0	\$2,465,160.00
#4	Modify breakwater east 200 feet, north 600 ft., and then angled 150 ft. to the northwest	460.0	\$2,621,805.00
#5	Modify breakwater using floating guidewall system. Breakwater will be east 200 feet, north 600 ft., and then angled 150ft to the northwest. Floating guidewalls will be 4 ½ ft. deep and have a wrap around effect. Will have to be manually adjusted periodically, especially during high water events. 60% of wave action will be reduced using floating guidewalls. The cost estimated for a total of 950 ft. of floating guidewall system and assembly is \$710,125. Annual maintenance costs which would include labor and materials for the floating guidewall will be \$20,800.	N/A	\$710,125 (materials) \$20,800 (annual maintenance costs)

Recommendation: Alternative 1: Extend breakwater east 200 ft., north 600 ft., and then angled 150 ft. to the northwest at an elevation of 454.0 ft. NGVD. This alternative was chosen due to it being the lowest cost option and that at this elevation; the boat ramp can serve visitors 98% of the time.

Proposed Actions (Plate 1):

1. Modify breakwater east 200 feet, north 600 ft., and angled 150ft to the northwest at an elevation of 454.0 ft. NGVD (See Appendix A). The north side of the breakwater will have an entrance and exit for boats.
2. Modify north side of seawall and raise to an elevation of 453.0 ft. Modify the east side of the seawall with two 40 ft. extensions to make it useable and safer at higher lake levels. Will provide loading and unloading area for boaters using the high water ramp.
3. Construct boat loading facility for accessibility. Facility will be approximately 3 ft. tall, 6 ft. wide and 8 ft. long meeting ADA requirements. It will be located in the Dam West boat ramp parking lot in the northwest corner near the entrance to the high water ramp.
4. Replace existing fish cleaning station with 12 x 21ft accessible fish cleaning station.
5. Modify existing recreational facilities to comply with ABA guidelines (See Appendix B).

Estimated Cost (with 25% contingency): \$3,728,280.00

II. Dam East Recreation Area:

Existing Conditions:

This facility includes a 4-lane boat ramp, large parking lot, vault toilet, courtesy dock, and a picnic shelter. A 2-lane high water ramp with a small parking lot is located in an adjacent cove. The cove is protected by a 150 ft. breakwater at elevation 455.0 on the west side and a 100 ft. breakwater at elevation 455.0 on the east side. The breakwaters do not provide adequate protection from wind at their current lengths. Vault comfort stations, picnic shelters, and signs are not fully compliant with ABA regulations. Supplement No. 2 to the Carlyle Lake Master Plan approved the addition of two lanes to the existing high water boat ramp with a top elevation of 460, extending the high water ramp parking area and raising the existing high water ramp breakwater.

Proposed Actions (Plate 2):

1. Add 75 ft to cove entrance west and east breakwater and raise to an elevation of 456.0 ft. NGVD. This will further constrict the cove entrance which will reduce wave action and better protect the cove and high water boat ramp from wind (See Appendix A).
2. Construct new accessible loading facility at the Dam East Boat Ramp. Facility will be approximately 3 ft. tall, 6 ft. wide and 8 ft. long meeting ADA requirements. It will be located southeast of the boat ramp.
3. Construct a 12ft x 14ft accessible fishing pier with an elevation of 448.0 ft. NGVD.
4. Modify existing recreational facilities to comply with ABA guidelines (See Appendix B).

Estimated Cost (with 25% contingency): \$953,630.00

III. McNair Campground

Existing Conditions:

Facilities are not compliant with ABA regulations.

Proposed Actions:

1. Modify existing recreational facilities to comply with ABA guidelines (See Appendix B).

Estimated Cost (with 25% contingency): \$189,800.00

IV. Coles Creek Recreation Area:

Existing Conditions:

The area includes a 4-lane boat ramp, a high water access boat ramp, fish cleaning station, courtesy dock, and a 150ft. breakwater at elevation 451.0 just to the west of the ramp. A breakwater at elevation 451.0 extending west 350 ft. from the campground also protects the boat ramp. The fish cleaning station was previously approved to be converted to an accessible facility. Facilities are not compliant with ABA regulations.

Proposed Actions (Plate 3):

1. Modify both breakwaters to protect the boat ramp. South breakwater will extend 200 feet to the NNW and the ramp breakwater will extend 200ft to the SSE. Both breakwaters will be modified to an elevation of 454.0 ft. NGVD which will provide better protection from wind (See Appendix A).
2. Construct boat loading facility for accessibility. Facility will be approximately 3 ft. tall, 6 ft. wide and 8 ft. long meeting ADA requirements. It will be located south of the Coles Creek high water boat ramp.
3. Construct a 12 ft. x 14 ft. accessible fishing pier at an elevation of 448.0 ft. NGVD.
4. Modify fish cleaning station with a 12 ft. x 21 ft. accessible fish cleaning station.
5. Modify existing recreational facilities to comply with ABA guidelines (See Appendix B).

Estimated Cost (with 25% contingency): \$760,525.00

V. Boulder Recreation Area:

Existing Conditions:

The area includes a 4-lane boat ramp, a high water access ramp, a large parking lot, a courtesy boat dock with a wooden deck, and two breakwaters. Each

side of the ramp has a concrete stepped pier on both sides about 18 inches high. The concrete apron and boat lanes are beginning to crack and shift. Some of the concrete has shifted vertically by as much as two inches. The 225 ft. north and 175ft south breakwaters have an elevation of 453.0 ft. NGVD, but do not adequately protect the boat ramp from western and northern winds. Facilities do not comply with ABA guidelines.

Proposed Action (Plate 4):

1. Modify north breakwater 125 ft. to the north and raise to an elevation of 454.0 ft. NGVD. Modify south breakwater 125 ft., angle northeast, and raise to an elevation of 454.0 ft. NGVD to protect the ramp from wind. Both breakwaters will increase protection from winds and wave action during high water events (See Appendix A).
2. Construct new accessible fishing pier at the south end of the boat ramp. The pier will be approximately 12ft x 14ft with an elevation of 448.0 ft. NGVD.
3. Construct new accessible loading facility. Facility will be approximately 3 ft. tall, 6 ft. wide and 8 ft. long meeting ADA requirements.
4. Replace existing fish cleaning station with a 12 x 21ft accessible fish cleaning station.
5. Modify existing recreational facilities to comply with ABA guidelines (See Appendix B).

Estimated Cost (with 25% contingency): \$881,524.00

VI. Keyesport Recreation Area:

Existing Conditions:

The area includes a 225 ft. breakwater that extends south and a 75 ft. breakwater that extends southeast. Both breakwaters are at an elevation of 454.0 ft. NGVD, but do not adequately protect the boat ramp from wind and waves. This area also has 4-lane boat ramp, a large parking area, a fishing pier, courtesy dock, and a non-accessible boat loading facility. A previous supplement approved the elevation of the boat apron by 2 feet to 455 ft. NGVD, but this has not been implemented. Facilities are not fully compliant with ABA regulations.

Proposed Actions (Plate 5):

1. Modify south breakwater 125 ft. to the north and raise to an elevation of 456.0 ft. NGVD. Modify north breakwater 100 ft. to the east and raise to 456.0 ft. NGVD.
2. Construct new accessible loading facility. Facility will be approximately 3 ft. tall, 6 ft. wide and 8 ft. long meeting ADA requirements.
3. Replace existing fish cleaning station with a 12 x 21 ft. accessible fish cleaning station.

4. Modify existing recreational facilities to comply with ABA guidelines (See Appendix B).

Estimated Cost (with 25% contingency): \$635,965.00

4. Environmental Compliance: Environmental impacts are being addressed as stated in Table 1. Many of the proposed actions are categorically excluded because they are located in previously disturbed areas or developed areas such as boat ramps. Some will require further environmental review and Section 404 Clean Water Act permits before construction is initiated. No impacts to cultural resources are expected to occur. However, any cultural resources unexpectedly encountered during construction will be addressed prior to project construction by the District Archeologist and lake management staff. Endangered Species Act compliance will be coordinated with the Fish and Wildlife Service. The FWS agrees with a Categorical Exclusion as long as the project has “no effect” on the Indiana bat or Eastern Massasauga.
5. Cost Estimate: Field estimates of cost for each project described above are included in Table 1. A 25 percent contingency was added to the cost of each item for budgeting purposes. Total cost of all new Corps facilities with contingencies is \$7,149,724 as shown in Table 1.
6. Conclusion: The proposed projects address the identified needs at the Carlyle Lake Project and are necessary to meet visitor demand, improve safety, reduce future O&M costs, and to ensure compliance with laws and regulations. The proposed actions are in accordance the Corps regulations and policies and support the Carlyle Lake Master Plan resource objectives.

Table 1 – Summary of Cost, Funding, and Environmental Compliance for Proposed Projects

Location	Proposed Action	New/ O&M	Qty	Unit	Cost (k)	Total Cost (k)	Field Estimate of Cost (with 25% contingency)	Funding Source	Environmental Compliance (GP – General Permit, IP- Individual Permit, CX- Categorical Exclusion)
Dam West Recreation Area (Campground, Day Use, West Spillway)	Modify Breakwater	O&M	1	Each	2,113	2,113	\$2,641,654.60	O&M	GP
	Modify seawall	O&M	1	Each	16.4	16.4	\$20,500	O&M	CX
	Modify boat loading area	O&M	1	Each	6.9	6.9	\$8,625	O&M	CX
	Replace Fish Cleaning Station	O&M	1	Each	30	30	\$22,500	O&M	CX
	ABA compliance	O&M			828	828	\$1,035,000	O&M	CX
Dam East Recreation Area (East Spillway, Dam East Boat Ramp, General Dean)	Modify high water ramp breakwater	O&M	1	Each	286.58	286.58	\$358,230	O&M	GP,CX
	Add fishing pier	New	1	Each	83	83	\$12,500	O&M	CX
	ABA compliance	O&M			466.3	466.3	\$582,900	O&M	CX
Boulder Recreation Area	Replace fish cleaning station	O&M	1	Each	18	18	\$22,500	O&M	CX
	Add boat loading area	New	1	Each	6.9	6.9	\$8,625	O&M	CX
	ABA compliance	O&M			250.3	250.3	\$312,900	O&M	CX
	Modify breakwater	O&M	1	Each	429.99	429.99	\$537,498.75	O&M	GP

Supplement No. 4
 Carlyle Lake Master Plan
 January 2014

Coles Creek Recreation Area	Add boat loading station	New	1	Each	6.9	6.9	\$8,625	O&M	CX
	ABA compliance	O&M			601.5	601.5	\$751,900	O&M	CX
McNair	ABA compliance	O&M			151.8	151.8	\$189,800	O&M	CX
Keyesport Recreation Area	Add boat loading area	New	1	Each	6.9	6.9	\$8,625	O&M	CX
	ABA compliance	O&M			132.9	132.9	\$33,400	O&M	CX
	Replace fish cleaning station	O&M	1	Each	18	18	\$22,500	O&M	CX
	Modify Breakwaters	O&M	1	Each	444.85	444.85	\$556,065	O&M	GP
	Modify fishing pier	O&M	1	Each	12.3	12.3	\$15,375	O&M	CX
TOTAL:									\$7,149,724

PLATE 1 – Dam West Recreation Area

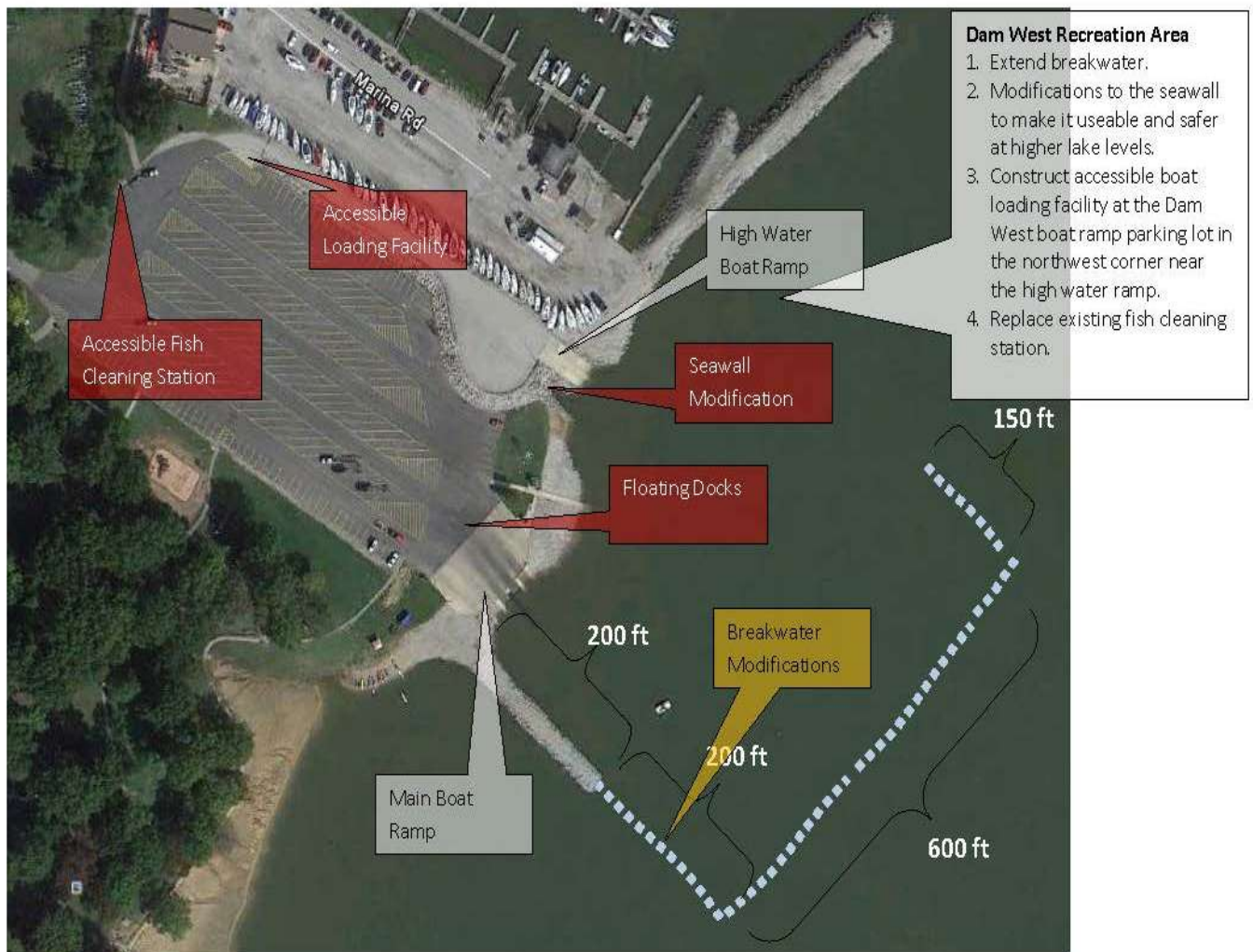


PLATE 2 – Dam East Recreation Area

Appendix A



PLATE 3 – Coles Creek Recreation Area

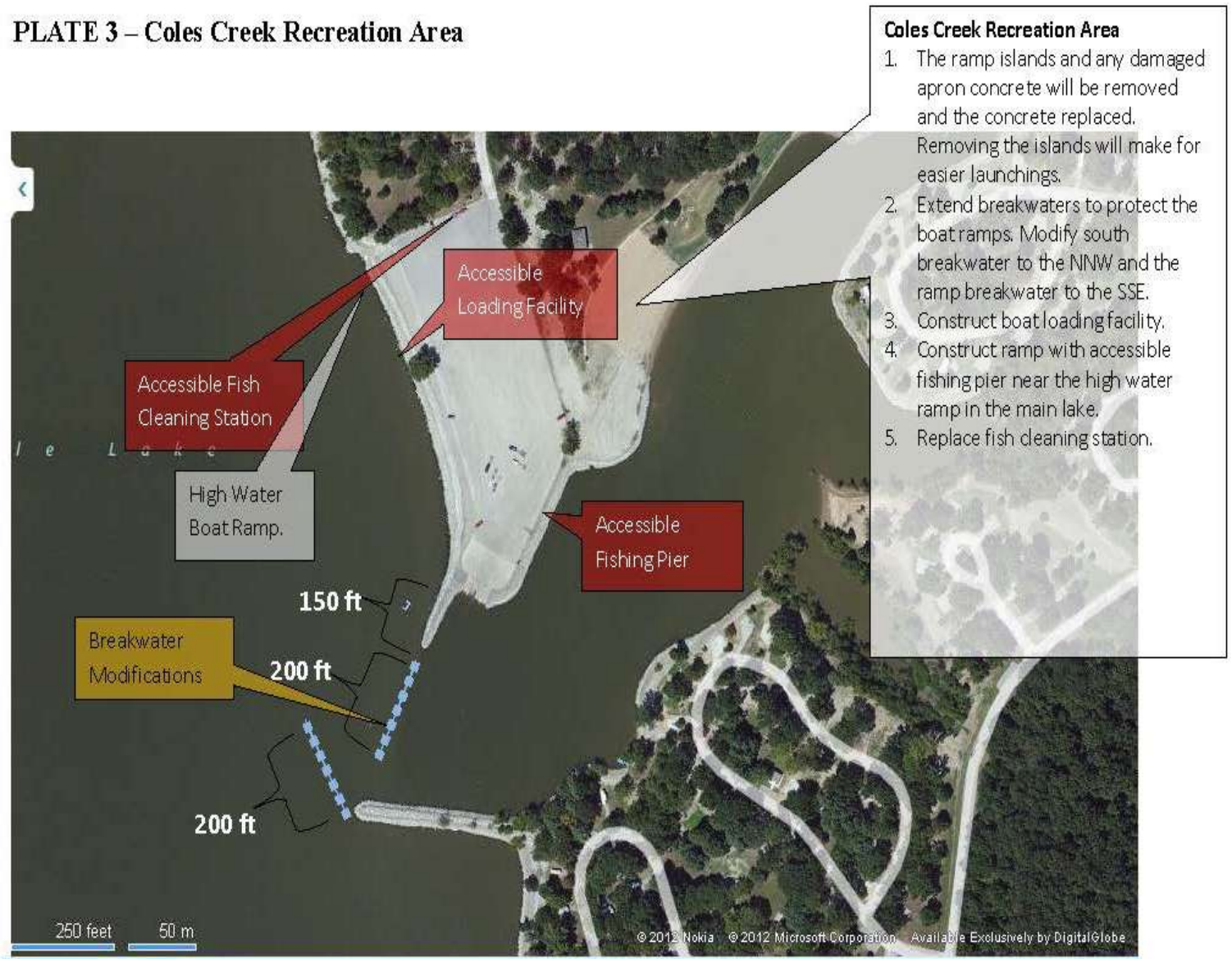


PLATE 4 – Boulder Recreation Area

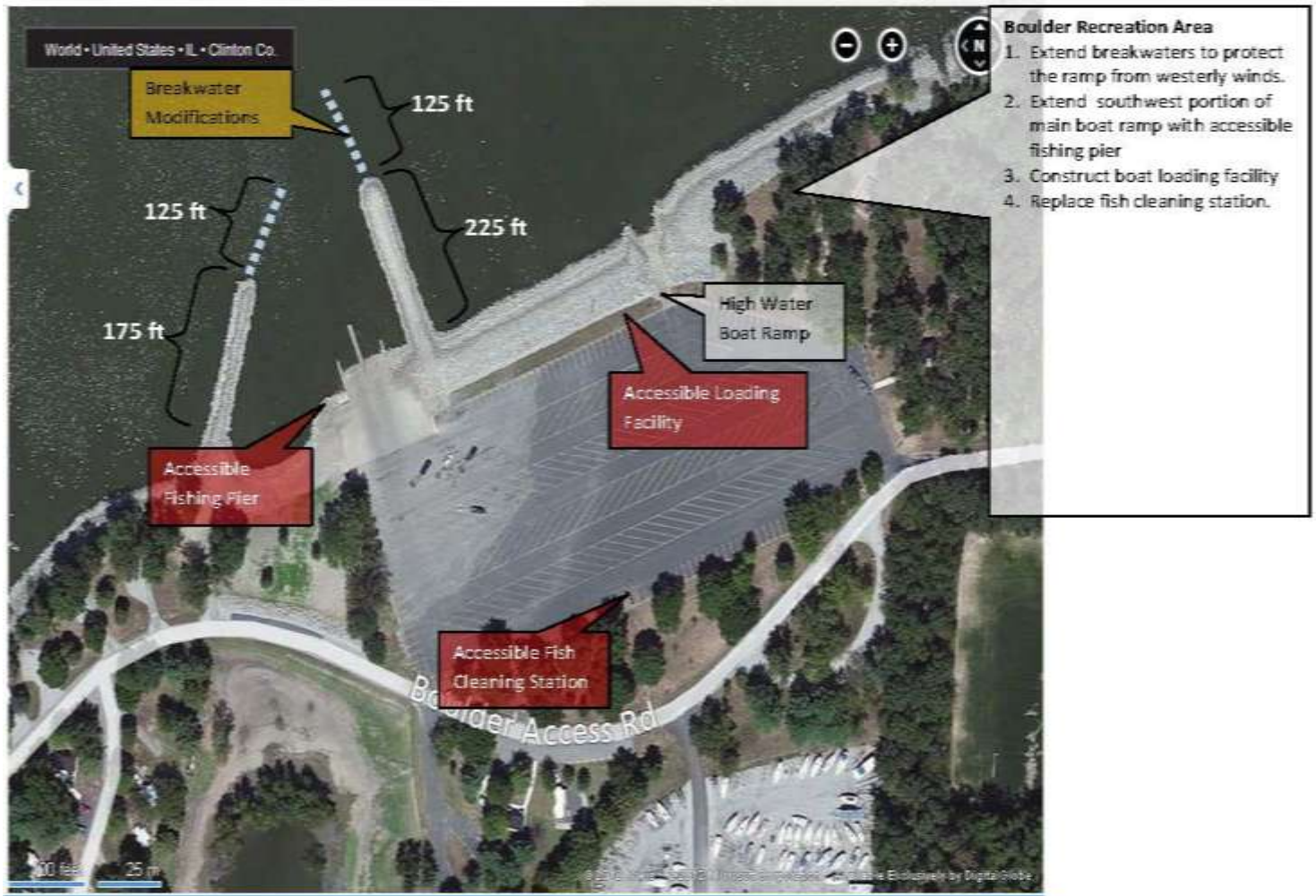


PLATE 5 – Keyesport Recreation Area

Appendix A



APPENDIX B

CARLYLE LAKE TRANSITION PLAN

In 1968 Congress passed the Architectural Barriers Act which requires any building or facility that is built, altered, or leased with federal funds to be accessible to and usable by people with disabilities. As a federal entity it is the Corps of Engineers responsibility to ensure that all facilities and recreational opportunities available are accessible. A cooperating partnership with the National Center on Accessibility (NCA) and the Carlyle Lake Project has lead to the development of an accessibility transition plan that identifies all architectural barriers that restrict access or use at Corps operated areas. To identify these items, Carlyle Lake Project team members inventoried all recreational areas, facilities, and opportunities that are available at the project. Any issues that were found within a facility or area were included in this document along with corrective actions needed to ensure access. This proposal will improve public health, safety, and customer service by providing facilities that meet the current ADA and ABA standards and customer demand.

Any required modifications that can be completed with day-to-day O&M funding will be addressed. Many of the modifications needed are low cost corrections that can easily be achieved with normal O&M funding. As additional funding becomes available more modifications will be made. In addition, the Corps will work with partners and stakeholders to seek funding to aid in completing all modifications.

Dam West Day Use Recreation Area

- **ACCESS ROUTE-** Access route from parking lot to facilities/experiences within day use area are not accessible.
 - **Corrective Action-** Design access route to connect accessible facilities to each other throughout the Dam West Day Use Recreation Area. Include features such as: parking, picnic shelters, picnic units, shower building, beach access, and drinking fountains. Designate route as accessible route. Modify surface to a stable, firm, slip resistant surface (301). Changes in level can be no more than 1/4". 1/4-1/2" high, beveled with a slope no greater than 1:2 (303). Level area to ensure slope is no greater than 1:2.
- **PARKING-** Parking not accessible and does not meet the minimum number of required accessible spaces
 - **Corrective Actions-** Follow the Illinois Administrative Code for Accessible Parking Modify the minimum number of parking spots for accessibility (refer to Table 208.2 Parking Spaces). Level the parking surface to ensure that the grade is no greater than 2% for the parking space and access aisles. Install accessible parking sign (including fine amount) placed 60" high. Modify spaces so that each is a 16' wide parking space including an 8' wide diagonally striped access aisle. Adjacent parking space cannot share an access aisle. Paint pavement striping with high quality yellow paint. No objects (dumpsters) are to block the access aisle.
- **DRINKING FOUNTAINS –** Fountains are not accessible.
 - **Corrective Actions-** Purchase and install accessible drinking fountains including a high and low drinking fountain (602.1 and 602.7). Modify route to fountains and 60" clear ground space around fountains. Spout outlets 36" above the finished ground and 50% shall comply with 602.7 (drinking fountains for standing persons, spout outlets 38" minimum and 43" maximum above the finished ground).
- **PICNIC SHELTERS-** 20% of accessible picnic tables in the shelter. Amount of accessible tables is correct; however, they are not positioned in a way that allows for access.
 - **Corrective Actions-** Arrange tables to allow 36" of clear ground space on all sides. Monitor or affix tables to ensure they are in the correct area at all times. Modify area to include 36" of clear ground space on all sides of the picnic tables (F 245.2).
- **PICNIC UNITS-** Units are not accessible.
 - **Corrective Actions-** Replace or modify 50% of all picnic units for accessibility. 40% of the accessible picnic units are required to be on an accessible route, thus 20% of picnic units must be accessible and connected to an outdoor recreation access route. Modify concrete pads to 36" of clear ground space on all sides of the accessible tables (1011.4). Disperse accessible

picnic units throughout the day use area to ensure equal recreational opportunities. If a grill is provided, modify the access route to the grill from the picnic unit with 48" of clear ground space around the grill (1011.5.2).

- **GRILLS-** Grills are not accessible.
 - Corrective Actions-Replace current grills so that 50% of grills are accessible. 40% of grills are required to be on an accessible route, thus 20% of grills must be accessible and connected to an outdoor recreation access route. Modify existing concrete pads to 48" of clear ground space (1011.5.2). Replace route to grills to a slope no greater than 2% or elevation changes greater than 1/4".
- **BEACH CHANGE BUILDING –** Signs, pipes under sink, mirrors, and benches are not compliant.
 - Corrective Actions- Replace signs with ones containing raised pictures and Braille, install signs to the wall on the side of the door that has the handle (703). Wrap pipes under sinks in plastic or other material that will prevent injury/burns (606.5). Lower mirrors so that the bottom edge of the mirrors is 40" maximum above the ground floor or a full length mirror provided (603.3). Order and install benches that are 42" long minimum and 20" deep minimum and 24" deep maximum (903.3). Modify hooks by installing them 48" maximum above the ground (603.4).
- **PLAYGROUND –** Currently, one playground is compliant. Surface is firm and stable and equipment components are available. Access route to playground is required.
 - Corrective Actions- Modify access route to connect playground to accessible parking and all other accessible facilities. Replace route with a firm and stable surface.
- **BEACH-** Access route from sidewalk to summer pool (445.0 NGVD). Slope cannot exceed 1:33. Seasonal mat, such as the Mobi Mat system, placed when beach is open and removed when closed. The mat comes in 60" by 60".
 - Corrective Actions-Modify access route with a firm, stable surface that connects the beach to accessible parking and all other accessible facilities. Grade and level sand to ensure slope is no greater than 1:33. Install Mobi Mat system during recreation season to provide accessible route from accessible parking to the summer pool of the lake.
- **BOAT RAMP-** Boat ramp does not have to be accessible. Courtesy dock provided is accessible and is an excellent example to use for other boat ramps. More accessible parking spaces required (101 to 150 parking spaces need a minimum of 5 accessible spaces for compliance) (502).
 - Corrective Actions- Boat ramp is acceptable. Follow the Illinois Administrative Code for Accessible Parking Modify a minimum of 5 parking spots (refer to Table 208.2 Parking Spaces). Level the parking surface to ensure that the grade is no greater than 2% for the parking space and access

aisles. Install accessible parking sign (including fine amount) placed 60" high. Modify spaces so that each is a 16' wide parking space including an 8' wide diagonally striped access aisle. Adjacent parking space cannot share an access aisle. Paint pavement striping with high quality yellow paint. No objects (dumpsters) are to block the access aisle.

- **FISH CLEANING STATION-** Fish cleaning station is not compliant with ABA standards. Not all fish cleaning stations must be compliant, but at least one for the entire project. It must be designated on map.
 - **Corrective Actions-** Replace current fish cleaning station with ABA compliant fish cleaning station.
- **COMFORT STATION-** Need an accessible route to facility. Accessible stall needs to be enlarged. Grab bars in accessible stall need to be installed at correct position.
 - **Corrective Actions-** Modify accessible route to a slope no greater than 2%. Modify accessible stall so it is 56" by 60" minimum. Install grab bars on the sidewall and rear wall. Replace sidewall grab bar with one that is 42" long minimum extending 12" maximum from the rear wall and extending 54" minimum from the rear wall (604.5). See Figure 604.5.1 and 604.5.2
- **SIGNS-** Signs are not accessible.
 - **Corrective Actions-** Replace current signs with signs that have raised characters and Braille below the corresponding text. Install at 48" minimum and 60" maximum from the ground and alongside the door latch (side that the door handle is on) (703).

Dam West Campground

- **ACCESS ROUTE-** Access route from the parking lot to all features or experiences that the day use provides.
 - **Corrective Action-** Modify route to a stable, firm, slip resistant surface (301) with changes in level no more than 1/4". 1/4-1/2" high, beveled with a slope no greater than 1:2 (303) that connects all accessible facilities in the area.
- **PARKING -** Current parking is not accessible and does not meet the minimum number of required accessible spaces
 - **Corrective Actions-** Follow the Illinois Administrative Code for Accessible Parking Modify the minimum number of parking spots for accessibility (refer to Table 208.2 Parking Spaces). Level the parking surface to ensure that the grade is no greater than 2% for the parking space and access aisles. Install accessible parking sign (including fine amount) placed 60" high. Modify spaces so that each is a 16' wide parking space including an 8' wide diagonally striped access aisle. Adjacent parking space cannot share an access aisle. Paint pavement striping with high quality yellow paint. No objects (dumpsters) are to block the access aisle.

- **CAMPSITES** – Based on the total number of campsites, there must be at least 5 accessible campsites. Currently there are 2 campsites that are designated accessible, retrofitting required. Campsites must be evenly dispersed throughout the campground to ensure visitors have equal opportunities to experience the campground. Accessible picnic tables and grills provided at campsites.
 - **Corrective Actions:** Modify route the roadway to the campsite to provide an accessible route. Modify a minimum of 5 (refer to Table F244.2.1) to 29' wide by 40' long (See Figure 1). Disperse sites throughout the campground to ensure visitors have equal opportunities to experience the campground. Modify campsites that include picnic tables to ensure 36" of clear ground space around the table. Modify grill pads to 48" of clear ground space around them. Modify water/electrical hook up so it is located in the center of the back half of the entire campsite (See Figure 1). Current surface (crushed rock) is acceptable. Signs designating accessible sites are not required.
- **MINI-SHOWER** – Accessible parking required. Toilet controls not in proper location. Drinking fountain does not meet ABA requirements. Grab bars, benches, and hooks not compliant. Exposed pipes. Signs not compliant.
 - **Corrective Actions-** Follow the Illinois Administrative Code for Accessible Parking Modify a minimum of 5 parking spots (refer to Table 208.2 Parking Spaces). Level the parking surface to ensure that the grade is no greater than 2% for the parking space and access aisles. Install accessible parking sign (including fine amount) placed 60" high. Modify spaces so that each is a 16' wide parking space including an 8' wide diagonally striped access aisle. Adjacent parking space cannot share an access aisle. Paint pavement striping with high quality yellow paint. No objects (dumpsters) are to block the access aisle. Modify route to facility. Install high and low water fountain. Relocate flush control on toilet to the open side of the toilet (604.6). Replace benches provided with 42" long minimum and 20" deep minimum and 24" deep maximum (903.3). Relocate provided hooks to a height between 48" maximum and 40" minimum. Modify exposed pipes with covering or different configuration. Replace current grab bars with compliant grab bars. Side grab bars 42" long minimum and installed to 12" maximum from the rear wall and extend a minimum of 54" out from rear wall Rear grab bars 36" long minimum and extend from the centerline of the toilet 12" minimum on one side and 24" on the other. The diameter of the grab bars 1 1/4" minimum (See Figures 604.5.1 and 604.5.2). Install signs containing raised characters and Braille below the corresponding text, located at 48" minimum and 60" maximum from the ground and alongside the door latch (side that the door handle is on).
- **LAUNDRY/SHOWER FACILITY** – Access route and parking are not compliant. Landing pad at end of ramp is not compliant. Mirrors not at correct height. Hooks not at correct height. Signs are not compliant. Benches not compliant. Shower floors not level. Threshold to laundry facility is not compliant.

- Corrective Actions: Follow the Illinois Administrative Code for Accessible Parking Modify a minimum of 5 parking spots (refer to Table 208.2 Parking Spaces). Level the parking surface to ensure that the grade is no greater than 2% for the parking space and access aisles. Install accessible parking sign (including fine amount) placed 60" high. Modify spaces so that each is a 16' wide parking space including an 8' wide diagonally striped access aisle. Adjacent parking space cannot share an access aisle. Paint pavement striping with high quality yellow paint. No objects (dumpsters) are to block the access aisle. Modify route to facility. Modify ramp to shower facility to a 60' x 60' landing pad. Install mirrors with the bottom edge of the reflecting surface 40" maximum above the ground. A single full-length mirror can be installed instead; the top edge of a full-length mirror should be 74" minimum from the ground (603.3). Order benches 42" long minimum and 20" deep minimum and 24" deep maximum (903.3). Install hooks 48" maximum and 40" minimum above the ground. Install signs containing raised characters and Braille below the corresponding text, at 48" minimum and 60" maximum from the ground and alongside the door latch (side that the door handle is on). Modify shower floors to a slope no greater than 2%. Replace laundry facilities threshold with ½" high maximum.
- COMFORT STATION – Follow the Illinois Administrative Code for Accessible Parking. Need high/low drinking fountain components. Grab bars in accessible stall are incorrect. Toilet is not in correct position.
 - Corrective Actions: Follow the Illinois Administrative Code for Accessible Parking Modify a minimum of 5 parking spots (refer to Table 208.2 Parking Spaces). Level the parking surface to ensure that the grade is no greater than 2% for the parking space and access aisles. Install accessible parking sign (including fine amount) placed 60" high. Modify spaces so that each is a 16' wide parking space including an 8' wide diagonally striped access aisle. Adjacent parking space cannot share an access aisle. Paint pavement striping with high quality yellow paint. No objects (dumpsters) are to block the access aisle. Relocate side grab bars to 12" maximum from the rear wall and extends a minimum of 54" out from rear wall Install rear grab bars that are 36" long minimum and extend from the centerline of the toilet 12" minimum on one side and 24" on the other (See Figures 604.5.1 and 604.5.2). Relocate toilet so centerline of the toilet for a wheel chair accessible is 16-18" (See Figure 604.2a).
- AMPHITHEATER – Accessible route needs to be available. Theater needs to have a hard ground surface (asphalt, concrete, crushed rock).
 - Corrective Actions – Modify route to amphitheater, ensure slope is no greater than 2%. Replace current surface (large rock) with a firm and stable surface (crushed rock similar to the type used on the accessible campsites is compliant).

- **DRINKING FOUNTAINS** – Drinking fountains are not accessible.
 - Corrective Actions-Replace current drinking fountains with fountains that have a high and low drinking fountain (602.1 and 602.7). Modify route to fountains include 60” clear ground space around the fountains. Spout outlets shall be 36” above the finished ground and 50% shall comply with 602.7 (drinking fountains for standing persons, spout outlets shall be 38” minimum and 43” maximum above the finished ground).
- **SIGNS** - Signs are not accessible.
 - Corrective Actions – Replace current signs with that contain raised characters and Braille below the corresponding text. Relocate signs at 48” minimum and 60” maximum from the ground and alongside the door latch (side that the door handle is on) (703).

Dam West Campground Loop 3

- **ACCESS ROUTE** - An access route from the parking lot to all features or experiences that the day use provides needs to be mapped out.
 - Corrective Action- Modify route to be a designated accessible route which includes having a stable, firm, slip resistant surface (301), changes in level can be no more than 1/4”. 1/4-1/2” high must be beveled with a slope no greater than 1:2 (303). The access route shall connect all accessible facilities in the area.
- **PARKING** - Current parking is not accessible and does not meet the minimum number of required accessible spaces
 - Corrective Actions- Follow the Illinois Administrative Code for Accessible Parking Modify the minimum number of parking spots for accessibility (refer to Table 208.2 Parking Spaces). Level the parking surface to ensure that the grade is no greater than 2% for the parking space and access aisles. Install accessible parking sign (including fine amount) placed 60” high. Modify spaces so that each is a 16’ wide parking space including an 8’ wide diagonally striped access aisle. Adjacent parking space cannot share an access aisle. Paint pavement striping with high quality yellow paint. No objects (dumpsters) are to block the access aisle.
- **CAMPSITES** – Based on the total number of campsites, there must be at least 2 accessible campsites. Campsites must be evenly dispersed throughout the campground to ensure visitors have equal opportunities to experience the campground. Accessible picnic tables and grills provided at campsites.
 - Corrective Actions: Modify route the roadway to the campsite to provide an accessible route. Modify a minimum of 2 campsites (refer to Table F244.2.1) to 29’ wide by 40’ long (See Figure 1). Disperse sites throughout the campground to ensure visitors have equal opportunities to experience the campground. Modify campsites that include picnic tables to ensure 36” of

clear ground space around the table. Modify grill pads to 48" of clear ground space around them. Modify water/electrical hook up so it is located in the center of the back half of the entire campsite (See Figure 1). Current surface (crushed rock) is acceptable. Signs designating accessible sites are not required.

- **MINI-SHOWER** - Accessible parking that is provided must follow the Illinois Administrative Code for Accessible Parking. Must have an accessible route to the facility. Drinking fountain, hooks, and signs are not compliant.
 - **Corrective Actions** – Follow the Illinois Administrative Code for Accessible Parking Modify the minimum number of parking spots for accessibility (refer to Table 208.2 Parking Spaces). Level the parking surface to ensure that the grade is no greater than 2% for the parking space and access aisles. Install accessible parking sign (including fine amount) placed 60" high. Modify spaces so that each is a 16' wide parking space including an 8' wide diagonally striped access aisle. Adjacent parking space cannot share an access aisle. Paint pavement striping with high quality yellow paint. No objects (dumpsters) are to block the access aisle. Replace current drinking fountain with a high and low water fountain. Relocate flush control shall be located on the open side of the toilet (604.6). Relocate hooks that are provided to 48" maximum and 40" minimum above the ground. Replace signs with signs containing raised characters and Braille below the corresponding text, located at 48" minimum and 60" maximum from the ground and alongside the door latch (side that the door handle is on).
- **SIGNS** - Signs are not accessible.
 - **Corrective Actions** – Replace current signs with that contain raised characters and Braille below the corresponding text. Relocate signs at 48" minimum and 60" maximum from the ground and alongside the door latch (side that the door handle is on) (703).

West Spillway Recreation Area

- **ACCESS ROUTE**-Access route from parking lot to all features or experiences that day use area provides mapped out.
 - **Corrective Action**- Design access route to connect accessible facilities to each other throughout the Dam West Day Use Recreation Area. Include features such as: parking, picnic shelters, picnic units, shower building, beach access, and drinking fountains. Designate route as accessible route. Modify surface to a stable, firm, slip resistant surface (301). Changes in level can be no more than 1/4". 1/4-1/2" high, beveled with a slope no greater than 1:2 (303). Level area to ensure slope is no greater than 1:2.
- **PARKING**- Parking not accessible and does not meet the minimum number of required accessible spaces

- Corrective Actions- Follow the Illinois Administrative Code for Accessible Parking. Modify the minimum number of parking spots for accessibility (refer to Table 208.2 Parking Spaces). Level the parking surface to ensure that the grade is no greater than 2% for the parking space and access aisles. Install accessible parking sign (including fine amount) placed 60" high. Modify spaces so that each is a 16' wide parking space including an 8' wide diagonally striped access aisle. Adjacent parking space cannot share an access aisle. Paint pavement striping with high quality yellow paint. No objects (dumpsters) are to block the access aisle.
- COMFORT STATION – Parking is not compliant. Flush control for toilet is on the wrong side. Toilet paper dispenser needs to be moved to correct position. Pipes are exposed. Signs are not compliant.
 - Corrective Actions: Follow the Illinois Administrative Code for Accessible Parking. Modify the minimum number of parking spots for accessibility (refer to Table 208.2 Parking Spaces). Level the parking surface to ensure that the grade is no greater than 2% for the parking space and access aisles. Install accessible parking sign (including fine amount) placed 60" high. Modify spaces so that each is a 16' wide parking space including an 8' wide diagonally striped access aisle. Adjacent parking space cannot share an access aisle. Paint pavement striping with high quality yellow paint. No objects (dumpsters) are to block the access aisle. Relocate mirrors so the bottom edge of the reflecting surface is 40" maximum above the ground surface (603.3). A full length mirror can also be installed for compliance to ABA standards. Relocate toilet paper dispenser between 7" minimum and 9" maximum from the front of the toilet. Modify exposed pipes material or configuration to protect against contact (606.5). Replace current signs with signs that have raised characters and Braille below the corresponding text (703). at 48" minimum and 60" maximum and must be located alongside the door latch (the side that the door handle is on).
- VAULT COMFORT STATIONS – No accessible route. Grab bars and signs are not compliant with ABA standards.
 - Corrective Actions – Modify current route with a firm, stable, and slip resistant ground surface (301) and a slope no greater than 2%. Side grab bars need to be 42" long minimum located 12" maximum from the rear wall and extending a minimum of 54" out from rear wall. Rear wall grab bars must be 36" long minimum and extend from the centerline of the toilet 12" minimum on one side and 24" on the other. Diameter of the grab bars must be 1 1/4" minimum and 2" maximum (604.5). Signs must have raised characters and Braille below the corresponding text. Signs must be located at 48" minimum and 60" maximum from the ground. Signs must be located alongside the door latch (side that the door handle is on) (703).
- DRINKING FOUNTAINS – Fountains are not accessible.

- Corrective Actions-Purchase and install accessible drinking fountains including a high and low drinking fountain (602.1 and 602.7). Modify route to fountains and 60" clear ground space around fountains. Spout outlets 36" above the finished ground and 50% shall comply with 602.7 (drinking fountains for standing persons, spout outlets 38" minimum and 43" maximum above the finished ground).
- PICNIC SHELTERS- 20% of accessible picnic tables in the shelter. Amount of accessible tables is correct; however, they are not positioned in a way that allows for access.
 - Corrective Actions-Arrange tables to allow 36" of clear ground space on all sides. Monitor or affix tables to ensure they are in the correct area at all times. Modify area to include 36" of clear ground space on all sides of the picnic tables (F 245.2).
- PICNIC UNITS- Units are not accessible.
 - Corrective Actions- Replace or modify 50% of all picnic units for accessibility. 40% of the accessible picnic units are required to be on an accessible route, thus 20% of picnic units must be accessible and connected to an outdoor recreation access route. Modify concrete pads to 36" of clear ground space on all sides of the accessible tables (1011.4). Disperse accessible picnic units throughout the day use area to ensure equal recreational opportunities. If a grill is provided, modify the access route to the grill from the picnic unit with 48" of clear ground space around the grill (1011.5.2).
- GRILLS- Grills are not accessible.
 - Corrective Actions-Replace current grills so that 50% of grills are accessible. 40% of grills are required to be on an accessible route, thus 20% of grills must be accessible and connected to an outdoor recreation access route. Modify existing concrete pads to 48" of clear ground space (1011.5.2). Replace route to grills to a slope no greater than 2% or elevation changes greater than 1/4".
- PLAYGROUND - Playground is not compliant. Does not contain correct number of play components or correct type of surface.
 - Corrective Actions- Modify or replace current play components with ground level components. A playground that has 5 to 7 play components is required to include at least 2 ground level components (F240.2.1.2).
- FISH CLEANING STATION- Fish cleaning station is not compliant with ABA standards. Not all fish cleaning stations must be compliant, but at least one for the entire project. It must be designated on map.
 - Corrective Actions- Replace current fish cleaning station with ABA compliant fish cleaning station.
- SIGNS- Signs are not accessible.

- Corrective Actions- Replace current signs with signs that have raised characters and Braille below the corresponding text. Install at 48" minimum and 60" maximum from the ground and alongside the door latch (side that the door handle is on) (703).

East Spillway Recreation Area

- ACCESS ROUTE-Access route from parking lot to all features or experiences that day use area provides mapped out.
 - Corrective Action- Design access route to connect accessible facilities to each other throughout the Dam West Day Use Recreation Area. Include features such as: parking, picnic shelters, picnic units, shower building, beach access, and drinking fountains. Designate route as accessible route. Modify surface to a stable, firm, slip resistant surface (301). Changes in level can be no more than 1/4". 1/4-1/2" high, beveled with a slope no greater than 1:2 (303). Level area to ensure slope is no greater than 1:2.
- PARKING- Parking not accessible and does not meet the minimum number of required accessible spaces
 - Corrective Actions- Follow the Illinois Administrative Code for Accessible Parking. Modify the minimum number of parking spots for accessibility (refer to Table 208.2 Parking Spaces). Level the parking surface to ensure that the grade is no greater than 2% for the parking space and access aisles. Install accessible parking sign (including fine amount) placed 60" high. Modify spaces so that each is a 16' wide parking space including an 8' wide diagonally striped access aisle. Adjacent parking space cannot share an access aisle. Paint pavement striping with high quality yellow paint. No objects (dumpsters) are to block the access aisle.
- COMFORT STATION – Parking is not compliant. Hooks toilet paper dispenser and drinking fountain are not compliant.
 - Corrective Actions - Follow the Illinois Administrative Code for Accessible Parking. Modify the minimum number of parking spots for accessibility (refer to Table 208.2 Parking Spaces). Level the parking surface to ensure that the grade is no greater than 2% for the parking space and access aisles. Install accessible parking sign (including fine amount) placed 60" high. Modify spaces so that each is a 16' wide parking space including an 8' wide diagonally striped access aisle. Adjacent parking space cannot share an access aisle. Paint pavement striping with high quality yellow paint. No objects (dumpsters) are to block the access aisle. Replace drinking fountain with one that contains a high and low component (602). Relocate hooks to 48" maximum above the ground surface (603.4). Relocate toilet paper dispenser to 7" minimum and 9" maximum from the front of the toilet (604.7).
- CAMPSITES – No accessible campsites.

- Corrective Actions – Modify current route surface to a stable, firm, slip resistant surface (301). Changes in level can be no more than 1/4". 1/4-1/2" high, beveled with a slope no greater than 1:2 (303). Level area to ensure slope is no greater than 1:2. Based on the total number of campsites (15) at least 2 campsites must be accessible (Refer to Table F244.2.1). Disperse accessible campsites evenly throughout the campground to ensure visitors have equal opportunities to experience the campground. Modify current campsites to 29' wide by 40' long (See Diagram 1). Modify or relocate picnic tables and grills to ensure clear ground space. Picnic tables require 36" of clear ground space around the table. Grills require 48" of clear ground space around them. Relocate water/electrical hook up to the center of the back half of the entire campsite (See Diagram 1). Replace current surface with one that is of a firm and stable surface.
- PICNIC SHELTERS- 20% of accessible picnic tables in the shelter. Amount of accessible tables is correct; however, they are not positioned in a way that allows for access.
 - Corrective Actions-Arrange tables to allow 36" of clear ground space on all sides. Monitor or affix tables to ensure they are in the correct area at all times. Modify area to include 36" of clear ground space on all sides of the picnic tables (F 245.2).
- PICNIC UNITS- Units are not accessible.
 - Corrective Actions- Replace or modify 50% of all picnic units for accessibility. 40% of the accessible picnic units are required to be on an accessible route, thus 20% of picnic units must be accessible and connected to an outdoor recreation access route. Modify concrete pads to 36" of clear ground space on all sides of the accessible tables (1011.4). Disperse accessible picnic units throughout the day use area to ensure equal recreational opportunities. If a grill is provided, modify the access route to the grill from the picnic unit with 48" of clear ground space around the grill (1011.5.2).
- GRILLS- Grills are not accessible.
 - Corrective Actions-Replace current grills so that 50% of grills are accessible. 40% of grills are required to be on an accessible route, thus 20% of grills must be accessible and connected to an outdoor recreation access route. Modify existing concrete pads to 48" of clear ground space (1011.5.2). Replace route to grills to a slope no greater than 2% or elevation changes greater than 1/4".
- DRINKING FOUNTAINS – Fountains are not accessible.
 - Corrective Actions-Purchase and install accessible drinking fountains including a high and low drinking fountain (602.1 and 602.7). Modify route to fountains and 60" clear ground space around fountains. Spout outlets 36" above the finished ground and 50% shall comply with 602.7 (drinking

fountains for standing persons, spout outlets 38" minimum and 43" maximum above the finished ground).

- VAULT COMFORT STATION # 1 – No accessible parking. Access route has prohibitive change in level. Toilet seat height, grab bars, toilet paper dispenser, and signs are not accessible.
 - Corrective Actions - Follow the Illinois Administrative Code for Accessible Parking. Modify the minimum number of parking spots for accessibility (refer to Table 208.2 Parking Spaces). Level the parking surface to ensure that the grade is no greater than 2% for the parking space and access aisles. Install accessible parking sign (including fine amount) placed 60" high. Modify spaces so that each is a 16' wide parking space including an 8' wide diagonally striped access aisle. Adjacent parking space cannot share an access aisle. Paint pavement striping with high quality yellow paint. No objects (dumpsters) are to block the access aisle. Modify access route to ensure no change in level greater than 1/4". Access route is required to contain a beveled edge and slope no greater than 1:2. Relocate toilet seat needs to a minimum height of 17" and a maximum height of 19" (604.4). Replace side grab bars with bars that are 42" long minimum and relocate them to 12" maximum from the rear wall and extending a minimum of 54" out from rear wall. Replace rear wall grab bars with bars that are 36" long minimum. Relocate bars to the centerline of the toilet 12" minimum on one side and 24" on the other. Diameter of the grab bars is 1 1/4" minimum and 2" maximum (604.5). Relocate toilet paper dispenser between 17" and 19" from the front of the toilet (604.7). Replace current signs with signs that contain raised characters and Braille below the corresponding text. Relocate signs to 48" minimum and 60" maximum from the ground and located alongside the door latch (side that the door handle is on) (703).
- VAULT COMFORT STATION #2 – Accessible parking that is provided does not meet Illinois Administrative Code Standards. Door handle, toilet seat, grab bars, toilet paper dispense, and signs are not compliant.
 - Corrective Actions – Follow the Illinois Administrative Code for Accessible Parking. Modify the minimum number of parking spots for accessibility (refer to Table 208.2 Parking Spaces). Level the parking surface to ensure that the grade is no greater than 2% for the parking space and access aisles. Install accessible parking sign (including fine amount) placed 60" high. Modify spaces so that each is a 16' wide parking space including an 8' wide diagonally striped access aisle. Adjacent parking space cannot share an access aisle. Paint pavement striping with high quality yellow paint. No objects (dumpsters) are to block the access aisle. Replace door handle with a handle that is operable using a closed fist. Replace or modify toilet seat to a minimum height of 17" and a maximum height of 19" (604.4). Replace side grab bars with 42" long minimum bars. Relocate side grab bars to 12" maximum from the rear wall and extending a minimum of 54" out from rear wall. Replace

rear wall grab bars with 36" long minimum bars that extend from the centerline of the toilet 12" minimum on one side and 24" on the other. Diameter of the grab bars must be 1 1/4" minimum and 2" maximum (604.5). Relocate toilet paper dispenser between 17" and 19" from the front of the toilet (604.7). Replace current signs with signs containing raised characters and Braille below the corresponding text. Relocate signs to 48" minimum and 60" maximum from the ground and located alongside the door latch (side that the door handle is on) (703).

- **FISH CLEANING STATION-** Fish cleaning station is not compliant with ABA standards. Not all fish cleaning stations must be compliant, but at least one for the entire project. It must be designated on map.
 - **Corrective Actions-** Replace current fish cleaning station with ABA compliant fish cleaning station.
- **SIGNS-** Signs are not accessible.
 - **Corrective Actions-** Replace current signs with signs that have raised characters and Braille below the corresponding text. Install at 48" minimum and 60" maximum from the ground and alongside the door latch (side that the door handle is on) (703).

Dam East Recreation Area

- **ACCESS ROUTE-** Access route from parking lot to all features or experiences that day use area provides mapped out.
 - **Corrective Action-** Design access route to connect accessible facilities to each other throughout the Dam West Day Use Recreation Area. Include features such as: parking, picnic shelters, picnic units, shower building, beach access, and drinking fountains. Designate route as accessible route. Modify surface to a stable, firm, slip resistant surface (301). Changes in level can be no more than 1/4". 1/4-1/2" high, beveled with a slope no greater than 1:2 (303). Level area to ensure slope is no greater than 1:2.
- **PARKING-** Parking not accessible and does not meet the minimum number of required accessible spaces
 - **Corrective Actions-** Follow the Illinois Administrative Code for Accessible Parking. Modify the minimum number of parking spots for accessibility (refer to Table 208.2 Parking Spaces). Level the parking surface to ensure that the grade is no greater than 2% for the parking space and access aisles. Install accessible parking sign (including fine amount) placed 60" high. Modify spaces so that each is a 16' wide parking space including an 8' wide diagonally striped access aisle. Adjacent parking space cannot share an access aisle. Paint pavement striping with high quality yellow paint. No objects (dumpsters) are to block the access aisle.

- **VAULT COMFORT STATION #1**– Parking is not compliant. Door handle, toilet seat, grab bars, toilet paper dispenser, and signs are not compliant.
 - **Corrective Actions** – Follow the Illinois Administrative Code for Accessible Parking. Modify the minimum number of parking spots for accessibility (refer to Table 208.2 Parking Spaces). Level the parking surface to ensure that the grade is no greater than 2% for the parking space and access aisles. Install accessible parking sign (including fine amount) placed 60” high. Modify spaces so that each is a 16’ wide parking space including an 8’ wide diagonally striped access aisle. Adjacent parking space cannot share an access aisle. Paint pavement striping with high quality yellow paint. No objects (dumpsters) are to block the access aisle. Replace current door handle with one that is operable using a closed fist. Replace/modify toilet seat to be at a minimum height of 17” and a maximum height of 19” (604.4). Replace side grab bars 42” long minimum bars located 12” maximum from the rear wall and extending a minimum of 54” out from rear wall. Replace rear wall grab bars with 36” long minimum bars located from the centerline of the toilet 12” minimum on one side and 24” on the other. Diameter of the grab bars must be 1 ¼” minimum and 2” maximum (604.5). Relocate toilet paper dispenser to 17” to 19” from the front of the toilet (604.7). Replace current signs with signs containing raised characters and Braille below the corresponding text. Relocate signs to 48” minimum and 60” maximum from the ground and located alongside the door latch (side that the door handle is on) (703).
- **VAULT COMFORT STATION #2** – No parking. Access route has prohibitive change in level. Toilet seat height, grab bars, toilet paper dispenser, and signs are not compliant.
 - **Corrective Actions** - Follow the Illinois Administrative Code for Accessible Parking. Modify the minimum number of parking spots for accessibility (refer to Table 208.2 Parking Spaces). Level the parking surface to ensure that the grade is no greater than 2% for the parking space and access aisles. Install accessible parking sign (including fine amount) placed 60” high. Modify spaces so that each is a 16’ wide parking space including an 8’ wide diagonally striped access aisle. Adjacent parking space cannot share an access aisle. Paint pavement striping with high quality yellow paint. No objects (dumpsters) are to block the access aisle. Modify access route to ensure no change in level greater than ¼”. Access route is required to contain a beveled edge and slope no greater than 1:2. Relocate toilet seat needs to a minimum height of 17” and a maximum height of 19” (604.4). Replace side grab bars with bars that are 42” long minimum and relocate them to 12” maximum from the rear wall and extending a minimum of 54” out from rear wall. Replace rear wall grab bars with bars that are 36” long minimum. Relocate bars to the centerline of the toilet 12” minimum on one side and 24” on the other. Diameter of the grab bars is 1 ¼” minimum and 2” maximum (604.5). Relocate toilet paper dispenser between 17” and 19” from the front of the toilet (604.7). Replace current signs with signs that contain raised characters

and Braille below the corresponding text. Relocate signs to 48" minimum and 60" maximum from the ground and located alongside the door latch (side that the door handle is on) (703).

- **PICNIC SHELTERS**- 20% of accessible picnic tables in the shelter. Amount of accessible tables is correct; however, they are not positioned in a way that allows for access.
 - **Corrective Actions**-Arrange tables to allow 36" of clear ground space on all sides. Monitor or affix tables to ensure they are in the correct area at all times. Modify area to include 36" of clear ground space on all sides of the picnic tables (F 245.2).
- **BOAT RAMP** - The boat ramp itself does not have to be accessible. More accessible parking spaces are needed.
 - **Corrective Actions**- Boat ramp is acceptable as is. Modify access route to ensure no change in level greater than 1/4". Access route is required to contain a beveled edge and slope no greater than 1:2. Relocate toilet seat needs to a minimum height of 17" and a maximum height of 19" (604.4). Replace side grab bars with bars that are 42" long minimum and relocate them to 12" maximum from the rear wall and extending a minimum of 54" out from rear wall. Replace rear wall grab bars with bars that are 36" long minimum. Relocate bars to the centerline of the toilet 12" minimum on one side and 24" on the other. Diameter of the grab bars is 1 1/4" minimum and 2" maximum (604.5). Relocate toilet paper dispenser between 17" and 19" from the front of the toilet (604.7). Replace current signs with signs that contain raised characters and Braille below the corresponding text. Relocate signs to 48" minimum and 60" maximum from the ground and located alongside the door latch (side that the door handle is on) (703).
- **SIGNS**- Signs are not accessible.
 - **Corrective Actions**- Replace current signs with signs that have raised characters and Braille below the corresponding text. Install at 48" minimum and 60" maximum from the ground and alongside the door latch (side that the door handle is on) (703).

General Dean Recreation Area

- **ACCESS ROUTE**-Access route from parking lot to all features or experiences that day use area provides mapped out.
 - **Corrective Action**- Design access route to connect accessible facilities to each other throughout the Dam West Day Use Recreation Area. Include features such as: parking, picnic shelters, picnic units, shower building, beach access, and drinking fountains. Designate route as accessible route. Modify surface to a stable, firm, slip resistant surface (301). Changes in level can be no more than 1/4". 1/4-1/2" high, beveled with a slope no greater than 1:2 (303). Level area to ensure slope is no greater than 1:2.

- **PARKING-** Parking not accessible and does not meet the minimum number of required accessible spaces
 - **Corrective Actions-** Follow the Illinois Administrative Code for Accessible Parking. Modify the minimum number of parking spots for accessibility (refer to Table 208.2 Parking Spaces). Level the parking surface to ensure that the grade is no greater than 2% for the parking space and access aisles. Install accessible parking sign (including fine amount) placed 60" high. Modify spaces so that each is a 16' wide parking space including an 8' wide diagonally striped access aisle. Adjacent parking space cannot share an access aisle. Paint pavement striping with high quality yellow paint. No objects (dumpsters) are to block the access aisle.
 - **VAULT COMFORT STATION** – Accessible parking that is provided does not meet Illinois Administrative Code Standards. Needs an accessible route from parking lot to vault toilet. Needs new door handle. Toilet seat is not correct. New grab bars need to be purchased and installed. Toilet paper dispenser is installed incorrectly. Signs are incorrect.
 - **Corrective Actions** – Follow the Illinois Administrative Code for Accessible Parking Modify the minimum number of parking spots for accessibility (refer to Table 208.2 Parking Spaces). Level the parking surface to ensure that the grade is no greater than 2% for the parking space and access aisles. Install accessible parking sign (including fine amount) placed 60" high. Modify spaces so that each is a 16' wide parking space including an 8' wide diagonally striped access aisle. Adjacent parking space cannot share an access aisle. Paint pavement striping with high quality yellow paint. No objects (dumpsters) are to block the access aisle. Modify access route to ensure no change in level greater than 1/4". Access route is required to contain a beveled edge and slope no greater than 1:2. Relocate toilet seat needs to a minimum height of 17" and a maximum height of 19" (604.4). Replace side grab bars with bars that are 42" long minimum and relocate them to 12" maximum from the rear wall and extending a minimum of 54" out from rear wall. Replace rear wall grab bars with bars that are 36" long minimum. Relocate bars to the centerline of the toilet 12" minimum on one side and 24" on the other. Diameter of the grab bars is 1 1/4" minimum and 2" maximum (604.5). Relocate toilet paper dispenser between 17" and 19" from the front of the toilet (604.7). Replace current signs with signs that contain raised characters and Braille below the corresponding text. Relocate signs to 48" minimum and 60" maximum from the ground and located alongside the door latch (side that the door handle is on) (703).
- **PICNIC UNITS-** Units are not accessible.
 - **Corrective Actions-** Replace or modify 50% of all picnic units for accessibility. 40% of the accessible picnic units are required to be on an accessible route, thus 20% of picnic units must be accessible and connected to

an outdoor recreation access route. Modify concrete pads to 36" of clear ground space on all sides of the accessible tables (1011.4). Disperse accessible picnic units throughout the day use area to ensure equal recreational opportunities. If a grill is provided, modify the access route to the grill from the picnic unit with 48" of clear ground space around the grill (1011.5.2).

- **GRILLS-** Grills are not accessible.
 - Corrective Actions-Replace current grills so that 50% of grills are accessible. 40% of grills are required to be on an accessible route, thus 20% of grills must be accessible and connected to an outdoor recreation access route. Modify existing concrete pads to 48" of clear ground space (1011.5.2). Replace route to grills to a slope no greater than 2% or elevation changes greater than 1/4".
- **SIGNS-** Signs are not accessible.
 - Corrective Actions- Replace current signs with signs that have raised characters and Braille below the corresponding text. Install at 48" minimum and 60" maximum from the ground and alongside the door latch (side that the door handle is on) (703).

McNair Campground

- **ACCESS ROUTE-**Access route from parking lot to all features or experiences that day use area provides mapped out.
 - Corrective Action- Design access route to connect accessible facilities to each other throughout the Dam West Day Use Recreation Area. Include features such as: parking, picnic shelters, picnic units, shower building, beach access, and drinking fountains. Designate route as accessible route. Modify surface to a stable, firm, slip resistant surface (301). Changes in level can be no more than 1/4". 1/4-1/2" high, beveled with a slope no greater than 1:2 (303). Level area to ensure slope is no greater than 1:2.
- **PARKING-** Parking not accessible and does not meet the minimum number of required accessible spaces
 - Corrective Actions- Follow the Illinois Administrative Code for Accessible Parking. Modify the minimum number of parking spots for accessibility (refer to Table 208.2 Parking Spaces). Level the parking surface to ensure that the grade is no greater than 2% for the parking space and access aisles. Install accessible parking sign (including fine amount) placed 60" high. Modify spaces so that each is a 16' wide parking space including an 8' wide diagonally striped access aisle. Adjacent parking space cannot share an access aisle. Paint pavement striping with high quality yellow paint. No objects (dumpsters) are to block the access aisle.
- **CAMPSITES** – No accessible campsites.
 - Corrective Actions – Modify current route surface to a stable, firm, slip resistant surface (301). Changes in level can be no more than 1/4". 1/4-1/2"

high, beveled with a slope no greater than 1:2 (303). Level area to ensure slope is no greater than 1:2. Based on the total number of campsites (32) a minimum of 3 campsites must be accessible (Refer to Table F244.2.1). Disperse accessible campsites evenly throughout the campground to ensure visitors have equal opportunities to experience the campground. Modify current campsites to 29' wide by 40' long (See Diagram 1). Modify or relocate picnic tables and grills to ensure clear ground space. Picnic tables require 36" of clear ground space around the table. Grills require 48" of clear ground space around them. Relocate water/electrical hook up to the center of the back half of the entire campsite (See Diagram 1). Replace current surface with one that is of a firm and stable surface.

- **SHOWER BUILDING** – No accessible parking. Signs, drinking fountain handrails are not accessible. Toilet paper dispenser toilet height, benches, and hooks that are provided are not accessible.
 - **Corrective Actions** – Follow the Illinois Administrative Code for Accessible Parking. Modify the minimum number of parking spots for accessibility (refer to Table 208.2 Parking Spaces). Level the parking surface to ensure that the grade is no greater than 2% for the parking space and access aisles. Install accessible parking sign (including fine amount) placed 60" high. Modify spaces so that each is a 16' wide parking space including an 8' wide diagonally striped access aisle. Adjacent parking space cannot share an access aisle. Paint pavement striping with high quality yellow paint. No objects (dumpsters) are to block the access aisle. Replace current drinking fountain with one that contains a high and low component. Install to ensure it does not interfere with clear ground space required around the drinking fountain. Replace handrails in shower with grab bars provided across the control wall and back wall 18" from the control wall (See Figure 608.3.1). Relocate toilet paper dispenser to 7" minimum and 9" maximum in front of the water closet, measured from the centerline of the dispenser (See Figure 604.7). Relocate toilet seat centerline (middle of the toilet) to 16" minimum and 18" maximum from the side wall. Replace provided benches with ones that have seats that are 42" long minimum. Benches must be 20" deep minimum and 24" deep maximum. Relocate hooks to 48" maximum above the ground floor. Replace current signs with signs that have raised characters and Braille below the corresponding text. Install at 48" minimum and 60" maximum from the ground and alongside the door latch (side that the door handle is on) (703).
- **COMFORT STATION**– Accessible parking does not follow the Illinois Administrative Code for Accessible Parking. Drinking fountain, grab bars, and toilet are not accessible.
 - **Corrective Actions:** Follow the Illinois Administrative Code for Accessible Parking. Modify the minimum number of parking spots for accessibility (refer to Table 208.2 Parking Spaces). Level the parking surface to ensure that the grade is no greater than 2% for the parking space and access aisles. Install

accessible parking sign (including fine amount) placed 60" high. Modify spaces so that each is a 16' wide parking space including an 8' wide diagonally striped access aisle. Adjacent parking space cannot share an access aisle. Paint pavement striping with high quality yellow paint. No objects (dumpsters) are to block the access aisle. Replace current drinking fountain with one that contains a high and low component. Install to ensure it does not interfere with clear ground space required around the drinking fountain. Relocate grab bars so the side grab bar is 12" maximum from the rear wall and extends a minimum of 54" out from rear wall. Rear grab bars must be 36" long minimum and extend from the centerline of the toilet 12" minimum on one side and 24" on the other (See Figures 604.5.1 and 604.5.2). Relocate centerline of the toilet to 16-18" (See Figure 604.2a).

- **DRINKING FOUNTAINS** – Fountains are not accessible.
 - Corrective Actions-Purchase and install accessible drinking fountains including a high and low drinking fountain (602.1 and 602.7). Modify route to fountains and 60" clear ground space around fountains. Spout outlets 36" above the finished ground and 50% shall comply with 602.7 (drinking fountains for standing persons, spout outlets 38" minimum and 43" maximum above the finished ground).
- **BEACH**- Access route from sidewalk to summer pool (445.0 NGVD). Slope cannot exceed 1:33. Seasonal mat, such as the Mobi Mat system, placed when beach is open and removed when closed. The mat comes in 60" by 60".
 - Corrective Actions-Modify access route with a firm, stable surface that connects the beach to accessible parking and all other accessible facilities. Grade and level sand to ensure slope is no greater than 1:33. Install Mobi Mat system during recreation season to provide accessible route from accessible parking to the summer pool of the lake.
- **PLAYGROUND** – Playgrounds are not compliant.
 - Corrective Actions- Modify playground to include a minimum of 2 ground level play components (F240.2.1.2).
- **SIGNS**- Signs are not accessible.
 - Corrective Actions- Replace current signs with signs that have raised characters and Braille below the corresponding text. Install at 48" minimum and 60" maximum from the ground and alongside the door latch (side that the door handle is on) (703).

Coles Creek Day Use

- **ACCESS ROUTE**-Access route from parking lot to all features or experiences that day use area provides mapped out.
 - Corrective Action- Design access route to connect accessible facilities to each other throughout the Dam West Day Use Recreation Area. Include features

such as: parking, picnic shelters, picnic units, shower building, beach access, and drinking fountains. Designate route as accessible route. Modify surface to a stable, firm, slip resistant surface (301). Changes in level can be no more than 1/4". 1/4-1/2" high, beveled with a slope no greater than 1:2 (303). Level area to ensure slope is no greater than 1:2.

- **PARKING-** Parking not accessible and does not meet the minimum number of required accessible spaces
 - **Corrective Actions-** Follow the Illinois Administrative Code for Accessible Parking. Modify the minimum number of parking spots for accessibility (refer to Table 208.2 Parking Spaces). Level the parking surface to ensure that the grade is no greater than 2% for the parking space and access aisles. Install accessible parking sign (including fine amount) placed 60" high. Modify spaces so that each is a 16' wide parking space including an 8' wide diagonally striped access aisle. Adjacent parking space cannot share an access aisle. Paint pavement striping with high quality yellow paint. No objects (dumpsters) are to block the access aisle.
- **COMFORT STATION –** No accessible parking, access route, or drinking fountain. Mirrors and hooks are not compliant.
 - **Corrective Actions –** Modify access route with a firm, stable surface and a slope no greater than 2% that connects the beach to accessible parking and all other facilities. Follow the Illinois Administrative Code for Accessible Parking. Modify the minimum number of parking spots for accessibility (refer to Table 208.2 Parking Spaces). Level the parking surface to ensure that the grade is no greater than 2% for the parking space and access aisles. Install accessible parking sign (including fine amount) placed 60" high. Modify spaces so that each is a 16' wide parking space including an 8' wide diagonally striped access aisle. Adjacent parking space cannot share an access aisle. Paint pavement striping with high quality yellow paint. No objects (dumpsters) are to block the access aisle. Replace current drinking fountain with one that contains a high and low component. Install to ensure it does not interfere with clear ground space required around the drinking fountain. Relocate mirrors with the bottom edge of the reflecting surface 40" maximum above the ground. Relocate hooks to 48" maximum above the ground floor (603.4).
- **BEACH CHANGE BUILDING –** Signs, pipes, mirrors, and benches are not compliant.
 - **Corrective Actions-** Modify or replace pipes located underneath sinks to prevent contact (606.5). Relocate mirrors so that the bottom edge of the mirrors is 40" maximum above the ground floor (603.3). Replace benches with 42" long minimum and 20" deep minimum and 24" deep maximum (903.3). Relocate hooks to 48" maximum above the ground (603.4).

- **PICNIC SHELTERS-** Number of accessible tables is correct, but are not positioned to allow for access.
 - Corrective Actions-Arrange tables to allow 36” of clear ground space on all sides. Monitor or affix tables to ensure they are in the correct area at all times. Modify area to include 36” of clear ground space on all sides of the picnic tables (F 245.2).
- **PICNIC UNITS-** Units are not accessible.
 - Corrective Actions- Replace or modify 50% of all picnic units for accessibility. 40% of the accessible picnic units are required to be on an accessible route, thus 20% of picnic units must be accessible and connected to an outdoor recreation access route. Modify concrete pads to 36” of clear ground space on all sides of the accessible tables (1011.4). Disperse accessible picnic units throughout the day use area to ensure equal recreational opportunities. If a grill is provided, modify the access route to the grill from the picnic unit with 48” of clear ground space around the grill (1011.5.2).
- **GRILLS-** Grills are not accessible.
 - Corrective Actions-Replace current grills so that 50% of grills are accessible. 40% of grills are required to be on an accessible route, thus 20% of grills must be accessible and connected to an outdoor recreation access route. Modify existing concrete pads to 48” of clear ground space (1011.5.2). Replace route to grills to a slope no greater than 2% or elevation changes greater than ¼”.
- **DRINKING FOUNTAINS –** Fountains are not accessible.
 - Corrective Actions-Purchase and install accessible drinking fountains including a high and low drinking fountain (602.1 and 602.7). Modify route to fountains and 60” clear ground space around fountains. Spout outlets 36” above the finished ground and 50% shall comply with 602.7 (drinking fountains for standing persons, spout outlets 38” minimum and 43” maximum above the finished ground).
- **FISH CLEANING STATION-** Fish cleaning station is not compliant with ABA standards. Not all fish cleaning stations must be compliant, but at least one for the entire project. It must be designated on map.
 - Corrective Actions- Replace current fish cleaning station with ABA compliant fish cleaning station.
- **PLAYGROUND –** Playgrounds are not compliant.
 - Corrective Actions- Corrective Actions- Modify playground to include a minimum of 2 ground level play components and a surface that is firm and stable (F240.2.1.2).

- **BEACH-** Access route from sidewalk to summer pool (445.0 NGVD). Slope cannot exceed 1:33. Seasonal mat, such as the Mobi Mat system, placed when beach is open and removed when closed. The mat comes in 60" by 60".
 - **Corrective Actions-** Modify access route with a firm, stable surface that connects the beach to accessible parking and all other accessible facilities. Grade and level sand to ensure slope is no greater than 1:33. Install Mobi Mat system during recreation season to provide accessible route from accessible parking to the summer pool of the lake.
- **SIGNS-** Signs are not accessible.
 - **Corrective Actions-** Replace current signs with signs that have raised characters and Braille below the corresponding text. Install at 48" minimum and 60" maximum from the ground and alongside the door latch (side that the door handle is on) (703).

Coles Creek Campground

- **ACCESS ROUTE-** Access route from parking lot to all features or experiences that day use area provides mapped out.
 - **Corrective Action-** Design access route to connect accessible facilities to each other throughout the Dam West Day Use Recreation Area. Include features such as: parking, picnic shelters, picnic units, shower building, beach access, and drinking fountains. Designate route as accessible route. Modify surface to a stable, firm, slip resistant surface (301). Changes in level can be no more than 1/4". 1/4-1/2" high, beveled with a slope no greater than 1:2 (303). Level area to ensure slope is no greater than 1:2.
- **PARKING-** Parking not accessible and does not meet the minimum number of required accessible spaces
 - **Corrective Actions-** Follow the Illinois Administrative Code for Accessible Parking. Modify the minimum number of parking spots for accessibility (refer to Table 208.2 Parking Spaces). Level the parking surface to ensure that the grade is no greater than 2% for the parking space and access aisles. Install accessible parking sign (including fine amount) placed 60" high. Modify spaces so that each is a 16' wide parking space including an 8' wide diagonally striped access aisle. Adjacent parking space cannot share an access aisle. Paint pavement striping with high quality yellow paint. No objects (dumpsters) are to block the access aisle.
- **COMFORT STATION #1** – No accessible parking. Drinking fountain, grab bars, and toilet are not compliant.
 - **Corrective Actions:** Follow the Illinois Administrative Code for Accessible Parking. Modify the minimum number of parking spots for accessibility (refer to Table 208.2 Parking Spaces). Level the parking surface to ensure that the grade is no greater than 2% for the parking space and access aisles. Install accessible parking sign (including fine amount) placed 60" high. Modify spaces so that each is a 16' wide parking space including an 8' wide

diagonally striped access aisle. Adjacent parking space cannot share an access aisle. Paint pavement striping with high quality yellow paint. No objects (dumpsters) are to block the access aisle. Replace current drinking fountain with one that contains a high and low component. Install to ensure it does not interfere with clear ground space required around the drinking fountain. Relocated grab bars so the side grab bar is 12" maximum from the rear wall and extends a minimum of 54" out from rear wall Rear grab bars must be 36" long minimum and extend from the centerline of the toilet 12" minimum on one side and 24" on the other (See Figures 604.5.1 and 604.5.2). Relocate centerline of the toilet to 16-18" (See Figure 604.2a).

- COMFORT STATION #2 – No accessible parking. Drinking fountain, grab bars, and toilet are not compliant.
 - Corrective Actions: Follow the Illinois Administrative Code for Accessible Parking. Modify the minimum number of parking spots for accessibility (refer to Table 208.2 Parking Spaces). Level the parking surface to ensure that the grade is no greater than 2% for the parking space and access aisles. Install accessible parking sign (including fine amount) placed 60" high. Modify spaces so that each is a 16' wide parking space including an 8' wide diagonally striped access aisle. Adjacent parking space cannot share an access aisle. Paint pavement striping with high quality yellow paint. No objects (dumpsters) are to block the access aisle. Replace current drinking fountain with one that contains a high and low component. Install to ensure it does not interfere with clear ground space required around the drinking fountain. Relocated grab bars so the side grab bar is 12" maximum from the rear wall and extends a minimum of 54" out from rear wall Rear grab bars must be 36" long minimum and extend from the centerline of the toilet 12" minimum on one side and 24" on the other (See Figures 604.5.1 and 604.5.2). Relocate centerline of the toilet to 16-18" (See Figure 604.2a).
- COMFORT STATION #3 – No accessible parking. Drinking fountain, grab bars, and toilet are not compliant.
 - Corrective Actions: Follow the Illinois Administrative Code for Accessible Parking. Modify the minimum number of parking spots for accessibility (refer to Table 208.2 Parking Spaces). Level the parking surface to ensure that the grade is no greater than 2% for the parking space and access aisles. Install accessible parking sign (including fine amount) placed 60" high. Modify spaces so that each is a 16' wide parking space including an 8' wide diagonally striped access aisle. Adjacent parking space cannot share an access aisle. Paint pavement striping with high quality yellow paint. No objects (dumpsters) are to block the access aisle. Replace current drinking fountain with one that contains a high and low component. Install to ensure it does not interfere with clear ground space required around the drinking fountain. Relocated grab bars so the side grab bar is 12" maximum from the rear wall and extends a minimum of 54" out from rear wall Rear grab bars must be 36"

long minimum and extend from the centerline of the toilet 12" minimum on one side and 24" on the other (See Figures 604.5.1 and 604.5.2). Relocate centerline of the toilet to 16-18" (See Figure 604.2a).

- COMFORT STATION #4 – No accessible parking. Drinking fountain, grab bars, and toilet are not compliant.
 - Corrective Actions: Follow the Illinois Administrative Code for Accessible Parking. Modify the minimum number of parking spots for accessibility (refer to Table 208.2 Parking Spaces). Level the parking surface to ensure that the grade is no greater than 2% for the parking space and access aisles. Install accessible parking sign (including fine amount) placed 60" high. Modify spaces so that each is a 16' wide parking space including an 8' wide diagonally striped access aisle. Adjacent parking space cannot share an access aisle. Paint pavement striping with high quality yellow paint. No objects (dumpsters) are to block the access aisle. Replace current drinking fountain with one that contains a high and low component. Install to ensure it does not interfere with clear ground space required around the drinking fountain. Relocated grab bars so the side grab bar is 12" maximum from the rear wall and extends a minimum of 54" out from rear wall Rear grab bars must be 36" long minimum and extend from the centerline of the toilet 12" minimum on one side and 24" on the other (See Figures 604.5.1 and 604.5.2). Relocate centerline of the toilet to 16-18" (See Figure 604.2a).
- COMFORT Station #5 – No accessible parking. Drinking fountain, grab bars, and toilet are not compliant.
 - Corrective Actions: Follow the Illinois Administrative Code for Accessible Parking. Modify the minimum number of parking spots for accessibility (refer to Table 208.2 Parking Spaces). Level the parking surface to ensure that the grade is no greater than 2% for the parking space and access aisles. Install accessible parking sign (including fine amount) placed 60" high. Modify spaces so that each is a 16' wide parking space including an 8' wide diagonally striped access aisle. Adjacent parking space cannot share an access aisle. Paint pavement striping with high quality yellow paint. No objects (dumpsters) are to block the access aisle. Replace current drinking fountain with one that contains a high and low component. Install to ensure it does not interfere with clear ground space required around the drinking fountain. Relocated grab bars so the side grab bar is 12" maximum from the rear wall and extends a minimum of 54" out from rear wall Rear grab bars must be 36" long minimum and extend from the centerline of the toilet 12" minimum on one side and 24" on the other (See Figures 604.5.1 and 604.5.2). Relocate centerline of the toilet to 16-18" (See Figure 604.2a).
- LAUNDRY/SHOWER BUILDING – No accessible parking. Signs, mirrors hooks, benches, floors are not compliant.

- Corrective Actions: Relocate mirrors to have the bottom edge of the reflecting surface 40" maximum above the ground. Replace benches with 42" long minimum and 20" deep minimum and 24" deep maximum (903.3) benches. Relocate hooks to 48" maximum and 40" minimum above the ground. Modify shower floors to have a grade no greater than 2%. Replace current signs with signs that have raised characters and Braille below the corresponding text. Install at 48" minimum and 60" maximum from the ground and alongside the door latch (side that the door handle is on) (703).
- CAMPSITES – No compliant campsites on accessible route.
 - Corrective Actions – Modify current route surface to a stable, firm, slip resistant surface (301). Changes in level can be no more than 1/4". 1/4-1/2" high, beveled with a slope no greater than 1:2 (303). Level area to ensure slope is no greater than 1:2. Modify a minimum of 7 campsites (refer to Table F244.2.1). Disperse accessible campsites evenly throughout the campground to ensure visitors have equal opportunities to experience the campground. Modify current campsites to 29' wide by 40' long (See Diagram 1). Modify or relocate picnic tables and grills to ensure clear ground space. Picnic tables require 36" of clear ground space around the table. Grills require 48" of clear ground space around them. Relocate water/electrical hook up to the center of the back half of the entire campsite (See Diagram 1). Replace current surface with one that is of a firm and stable surface.
- AMPHITHEATER – Accessible route needs to be available. Theater needs to have a hard ground surface (asphalt, concrete, crushed rock).
 - Corrective Actions – Modify route to amphitheater, ensure slope is no greater than 2%. Replace current surface (large rock) with a firm and stable surface (crushed rock similar to the type used on the accessible campsites is compliant).
- DRINKING FOUNTAINS – Fountains are not accessible.
 - Corrective Actions-Purchase and install accessible drinking fountains including a high and low drinking fountain (602.1 and 602.7). Modify route to fountains and 60" clear ground space around fountains. Spout outlets 36" above the finished ground and 50% shall comply with 602.7 (drinking fountains for standing persons, spout outlets 38" minimum and 43" maximum above the finished ground).
- PLAYGROUNDS- None of the playgrounds are compliant. Surface is not firm and stable and no equipment is accessible.
 - Corrective Actions- Modify playground to include a minimum of 2 ground level play components (F240.2.1.2).
- SIGNS- Signs are not accessible.

- Corrective Actions- Replace current signs with signs that have raised characters and Braille below the corresponding text. Install at 48" minimum and 60" maximum from the ground and alongside the door latch (side that the door handle is on) (703).

Boulder Day Use

- ACCESS ROUTE-Access route from parking lot to all features or experiences that day use area provides mapped out.
 - Corrective Action- Design access route to connect accessible facilities to each other throughout the Dam West Day Use Recreation Area. Include features such as: parking, picnic shelters, picnic units, shower building, beach access, and drinking fountains. Designate route as accessible route. Modify surface to a stable, firm, slip resistant surface (301). Changes in level can be no more than 1/4". 1/4-1/2" high, beveled with a slope no greater than 1:2 (303). Level area to ensure slope is no greater than 1:2.
- PARKING- Parking not accessible and does not meet the minimum number of required accessible spaces
 - Corrective Actions- Follow the Illinois Administrative Code for Accessible Parking. Modify the minimum number of parking spots for accessibility (refer to Table 208.2 Parking Spaces). Level the parking surface to ensure that the grade is no greater than 2% for the parking space and access aisles. Install accessible parking sign (including fine amount) placed 60" high. Modify spaces so that each is a 16' wide parking space including an 8' wide diagonally striped access aisle. Adjacent parking space cannot share an access aisle. Paint pavement striping with high quality yellow paint. No objects (dumpsters) are to block the access aisle.
- COMFORT STATION – No accessible parking. Drinking fountain, mirrors, and hooks not compliant
 - Corrective Actions – Follow the Illinois Administrative Code for Accessible Parking. Modify the minimum number of parking spots for accessibility (refer to Table 208.2 Parking Spaces). Level the parking surface to ensure that the grade is no greater than 2% for the parking space and access aisles. Install accessible parking sign (including fine amount) placed 60" high. Modify spaces so that each is a 16' wide parking space including an 8' wide diagonally striped access aisle. Adjacent parking space cannot share an access aisle. Paint pavement striping with high quality yellow paint. No objects (dumpsters) are to block the access aisle. Replace current drinking fountain with one that contains a high and low component. Install to ensure it does not interfere with clear ground space required around the drinking fountain. Relocate mirrors to have the bottom edge of the reflecting surface 40" maximum above the ground floor (603.3). Relocate hooks to 48" maximum above the ground floor (603.4).

- **PICNIC SHELTERS-** 20% of accessible picnic tables in the shelter. Amount of accessible tables is correct; however, they are not positioned in a way that allows for access.
 - Corrective Actions-Arrange tables to allow 36" of clear ground space on all sides. Monitor or affix tables to ensure they are in the correct area at all times. Modify area to include 36" of clear ground space on all sides of the picnic tables (F 245.2).
- **PICNIC UNITS-** Units are not accessible.
 - Corrective Actions- Replace or modify 50% of all picnic units for accessibility. 40% of the accessible picnic units are required to be on an accessible route, thus 20% of picnic units must be accessible and connected to an outdoor recreation access route. Modify concrete pads to 36" of clear ground space on all sides of the accessible tables (1011.4). Disperse accessible picnic units throughout the day use area to ensure equal recreational opportunities. If a grill is provided, modify the access route to the grill from the picnic unit with 48" of clear ground space around the grill (1011.5.2).
- **GRILLS-** Grills are not accessible.
 - Corrective Actions-Replace current grills so that 50% of grills are accessible. 40% of grills are required to be on an accessible route, thus 20% of grills must be accessible and connected to an outdoor recreation access route. Modify existing concrete pads to 48" of clear ground space (1011.5.2). Replace route to grills to a slope no greater than 2% or elevation changes greater than 1/4".
- **DRINKING FOUNTAINS –** Fountains are not accessible.
 - Corrective Actions-Purchase and install accessible drinking fountains including a high and low drinking fountain (602.1 and 602.7). Modify route to fountains and 60" clear ground space around fountains. Spout outlets 36" above the finished ground and 50% shall comply with 602.7 (drinking fountains for standing persons, spout outlets 38" minimum and 43" maximum above the finished ground).
- **FISH CLEANING STATION-** Fish cleaning station is not compliant with ABA standards. Not all fish cleaning stations must be compliant, but at least one for the entire project. It must be designated on map.
 - Corrective Actions- Replace current fish cleaning station with ABA compliant fish cleaning station.
- **PLAYGROUND -** Playground is not compliant.
 - Corrective Actions- Modify playground to include at least 2 ground level components (5 to 7 elevated components must include 2 ground level components). (F240.2.1.2). Modify surface to one that is firm and stable.
- **SIGNS-** Signs are not accessible.

- Corrective Actions- Replace current signs with signs that have raised characters and Braille below the corresponding text. Install at 48" minimum and 60" maximum from the ground and alongside the door latch (side that the door handle is on) (703).

Boulder Campground

- ACCESS ROUTE-Access route from parking lot to all features or experiences that day use area provides mapped out.
 - Corrective Action- Design access route to connect accessible facilities to each other throughout the Dam West Day Use Recreation Area. Include features such as: parking, picnic shelters, picnic units, shower building, beach access, and drinking fountains. Designate route as accessible route. Modify surface to a stable, firm, slip resistant surface (301). Changes in level can be no more than 1/4". 1/4-1/2" high, beveled with a slope no greater than 1:2 (303). Level area to ensure slope is no greater than 1:2.
- PARKING- Parking not accessible and does not meet the minimum number of required accessible spaces
 - Corrective Actions- Follow the Illinois Administrative Code for Accessible Parking. Modify the minimum number of parking spots for accessibility (refer to Table 208.2 Parking Spaces). Level the parking surface to ensure that the grade is no greater than 2% for the parking space and access aisles. Install accessible parking sign (including fine amount) placed 60" high. Modify spaces so that each is a 16' wide parking space including an 8' wide diagonally striped access aisle. Adjacent parking space cannot share an access aisle. Paint pavement striping with high quality yellow paint. No objects (dumpsters) are to block the access aisle.
- COMFORT STATION #1 - No accessible parking. Drinking fountain, mirrors, and hooks are not compliant.
 - Corrective Actions – Follow the Illinois Administrative Code for Accessible Parking. Modify the minimum number of parking spots for accessibility (refer to Table 208.2 Parking Spaces). Level the parking surface to ensure that the grade is no greater than 2% for the parking space and access aisles. Install accessible parking sign (including fine amount) placed 60" high. Modify spaces so that each is a 16' wide parking space including an 8' wide diagonally striped access aisle. Adjacent parking space cannot share an access aisle. Paint pavement striping with high quality yellow paint. No objects (dumpsters) are to block the access aisle. Replace current drinking fountain with one that contains a high and low component. Install to ensure it does not interfere with clear ground space required around the drinking fountain. Relocate mirrors to have the bottom edge of the reflecting surface 40" maximum above the ground floor (603.3). Relocate hooks to 48" maximum above the ground floor (603.4).

- COMFORT STATION#2 – No accessible parking. Drinking fountain, mirrors, and hooks are not compliant.
 - Corrective Actions – Follow the Illinois Administrative Code for Accessible Parking. Modify the minimum number of parking spots for accessibility (refer to Table 208.2 Parking Spaces). Level the parking surface to ensure that the grade is no greater than 2% for the parking space and access aisles. Install accessible parking sign (including fine amount) placed 60” high. Modify spaces so that each is a 16’ wide parking space including an 8’ wide diagonally striped access aisle. Adjacent parking space cannot share an access aisle. Paint pavement striping with high quality yellow paint. No objects (dumpsters) are to block the access aisle. Replace current drinking fountain with one that contains a high and low component. Install to ensure it does not interfere with clear ground space required around the drinking fountain. Relocate mirrors to have the bottom edge of the reflecting surface 40” maximum above the ground floor (603.3). Relocate hooks to 48” maximum above the ground floor (603.4).
- COMFORT STATION #3 - No accessible parking. Drinking fountain, mirrors, and hooks are not compliant.
 - Corrective Actions – Follow the Illinois Administrative Code for Accessible Parking. Modify the minimum number of parking spots for accessibility (refer to Table 208.2 Parking Spaces). Level the parking surface to ensure that the grade is no greater than 2% for the parking space and access aisles. Install accessible parking sign (including fine amount) placed 60” high. Modify spaces so that each is a 16’ wide parking space including an 8’ wide diagonally striped access aisle. Adjacent parking space cannot share an access aisle. Paint pavement striping with high quality yellow paint. No objects (dumpsters) are to block the access aisle. Replace current drinking fountain with one that contains a high and low component. Install to ensure it does not interfere with clear ground space required around the drinking fountain. Relocate mirrors to have the bottom edge of the reflecting surface 40” maximum above the ground floor (603.3). Relocate hooks to 48” maximum above the ground floor (603.4).
- LAUNDRY/SHOWER BUILDING – Mirrors, hooks, benches, and signs are not compliant. Shower floors are not level.
 - Corrective Actions: Relocate mirrors to have the bottom edge of the reflecting surface 40” maximum above the ground. Replace benches with 42” long minimum and 20” deep minimum and 24” deep maximum (903.3). Relocate hooks to 48” maximum and 40” minimum above the ground. Modify shower floors to a grade no greater than 2%. Replace current signs with signs that have raised characters and Braille below the corresponding text. Install at 48” minimum and 60” maximum from the ground and alongside the door latch (side that the door handle is on) (703).

- **CAMPSITES** – No compliant campsites on accessible route.
 - Corrective Actions – Modify current route surface to a stable, firm, slip resistant surface (301). Changes in level can be no more than 1/4". 1/4-1/2" high, beveled with a slope no greater than 1:2 (303). Level area to ensure slope is no greater than 1:2. Modify a minimum of 5 campsites (refer to Table F244.2.1). Disperse accessible campsites evenly throughout the campground to ensure visitors have equal opportunities to experience the campground. Modify current campsites to 29' wide by 40' long (See Diagram 1). Modify or relocate picnic tables and grills to ensure clear ground space. Picnic tables require 36" of clear ground space around the table. Grills require 48" of clear ground space around them. Relocate water/electrical hook up to the center of the back half of the entire campsite (See Diagram 1). Replace current surface with one that is of a firm and stable surface. Based on the total number of campsites (84), there must be at least 5 accessible campsites. Currently there are 27 campsites that are considered accessible, but need retrofitting to be compliant. Campsites must be evenly dispersed throughout the campground to ensure visitors have equal opportunities to experience the campground. Picnic tables and grills that are provided at campsites must also be accessible.
- **AMPHITHEATER** – Accessible route needs to be available. Theater needs to have a hard ground surface (asphalt, concrete, crushed rock). Current width between rows is acceptable.
 - Corrective Actions – Ensure that path to amphitheater has a slope no greater than 2%. Clear out rock that is currently being used a ground surface and replace with crushed rock similar to the type used on accessible campsites.
- **DRINKING FOUNTAINS** – Fountains are not accessible.
 - Corrective Actions-Purchase and install accessible drinking fountains including a high and low drinking fountain (602.1 and 602.7). Modify route to fountains and 60" clear ground space around fountains. Spout outlets 36" above the finished ground and 50% shall comply with 602.7 (drinking fountains for standing persons, spout outlets 38" minimum and 43" maximum above the finished ground).
- **PLAYGROUNDS**- None of the playgrounds are compliant. Surface is not firm and stable and no equipment is accessible.
 - Corrective Actions- Modify playground to include a minimum of 2 ground level play components (F240.2.1.2).
- **SIGNS**- Signs are not accessible.
 - Corrective Actions- Replace current signs with signs that have raised characters and Braille below the corresponding text. Install at 48" minimum and 60" maximum from the ground and alongside the door latch (side that the door handle is on) (703).

Keyesport Day Use

- **ACCESS ROUTE**-Access route from parking lot to all features or experiences that day use area provides mapped out.
 - **Corrective Action**- Design access route to connect accessible facilities to each other throughout the Dam West Day Use Recreation Area. Include features such as: parking, picnic shelters, picnic units, shower building, beach access, and drinking fountains. Designate route as accessible route. Modify surface to a stable, firm, slip resistant surface (301). Changes in level can be no more than 1/4". 1/4-1/2" high, beveled with a slope no greater than 1:2 (303). Level area to ensure slope is no greater than 1:2.
- **PARKING**- Parking not accessible and does not meet the minimum number of required accessible spaces
 - **Corrective Actions**- Follow the Illinois Administrative Code for Accessible Parking. Modify the minimum number of parking spots for accessibility (refer to Table 208.2 Parking Spaces). Level the parking surface to ensure that the grade is no greater than 2% for the parking space and access aisles. Install accessible parking sign (including fine amount) placed 60" high. Modify spaces so that each is a 16' wide parking space including an 8' wide diagonally striped access aisle. Adjacent parking space cannot share an access aisle. Paint pavement striping with high quality yellow paint. No objects (dumpsters) are to block the access aisle.
- **COMFORT STATION** – No accessible parking. Drinking fountain, mirrors hooks, and signs are not compliant.
 - **Corrective Actions** – Follow the Illinois Administrative Code for Accessible Parking. Modify the minimum number of parking spots for accessibility (refer to Table 208.2 Parking Spaces). Level the parking surface to ensure that the grade is no greater than 2% for the parking space and access aisles. Install accessible parking sign (including fine amount) placed 60" high. Modify spaces so that each is a 16' wide parking space including an 8' wide diagonally striped access aisle. Adjacent parking space cannot share an access aisle. Paint pavement striping with high quality yellow paint. No objects (dumpsters) are to block the access aisle. Replace current drinking fountain with one that contains a high and low component. Install to ensure it does not interfere with clear ground space required around the drinking fountain. Relocate mirrors to have the bottom edge of the reflecting surface 40" maximum above the ground floor (603.3). Relocate hooks to 48" maximum above the ground floor (603.4). Replace current signs with signs that have raised characters and Braille below the corresponding text. Install at 48" minimum and 60" maximum from the ground and alongside the door latch (side that the door handle is on) (703).

- **PICNIC SHELTERS-** 20% of accessible picnic tables in the shelter. Amount of accessible tables is correct; however, they are not positioned in a way that allows for access.
 - Corrective Actions-Arrange tables to allow 36" of clear ground space on all sides. Monitor or affix tables to ensure they are in the correct area at all times. Modify area to include 36" of clear ground space on all sides of the picnic tables (F 245.2).
- **PICNIC UNITS-** Units are not accessible.
 - Corrective Actions- Replace or modify 50% of all picnic units for accessibility. 40% of the accessible picnic units are required to be on an accessible route, thus 20% of picnic units must be accessible and connected to an outdoor recreation access route. Modify concrete pads to 36" of clear ground space on all sides of the accessible tables (1011.4). Disperse accessible picnic units throughout the day use area to ensure equal recreational opportunities. If a grill is provided, modify the access route to the grill from the picnic unit with 48" of clear ground space around the grill (1011.5.2).
- **GRILLS-** Grills are not accessible.
 - Corrective Actions-Replace current grills so that 50% of grills are accessible. 40% of grills are required to be on an accessible route, thus 20% of grills must be accessible and connected to an outdoor recreation access route. Modify existing concrete pads to 48" of clear ground space (1011.5.2). Replace route to grills to a slope no greater than 2% or elevation changes greater than 1/4".
- **PLAYGROUNDS-** None of the playgrounds are compliant. Surface is not firm and stable and no equipment is accessible.
 - Corrective Actions- Modify playground to include a minimum of 2 ground level play components (F240.2.1.2).
- **BEACH-** Access route from sidewalk to summer pool (445.0 NGVD). Slope cannot exceed 1:33. Seasonal mat, such as the Mobi Mat system, placed when beach is open and removed when closed. The mat comes in 60" by 60".
 - Corrective Actions-Modify access route with a firm, stable surface that connects the beach to accessible parking and all other accessible facilities. Grade and level sand to ensure slope is no greater than 1:33. Install Mobi Mat system during recreation season to provide accessible route from accessible parking to the summer pool of the lake.
- **BOAT RAMP-** The boat ramp itself does not have to be accessible. The courtesy dock that is provided is accessible and is an excellent example to use for other boat ramps. More accessible parking spaces are needed (101 to 150 parking spaces need a minimum of 5 accessible spaces for compliance) (502).
 - Corrective Actions- Boat ramp is acceptable as is. In accordance with the Illinois Administrative Code for Accessible Parking the following changes

must be made: A minimum of 5 parking spots must be made accessible (refer to Table 208.2 Parking Spaces). This will include leveling the parking surface to ensure that the grade is no greater than 2% for the parking space and access aisles. An accessible parking sign must be placed 60" high and include a sign designating the fine amount. Each parking space shall consist of a 16' wide parking space including an 8' wide diagonally striped access aisle. Adjacent parking space cannot share an access aisle. High quality yellow paint for pavement striping will be used. No objects (dumpsters) are to block the access aisle.

- **FISHING PIER** – The current fishing pier is not accessible.
 - Corrective Actions – Replace fishing pier with accessible pier (here or at another location).
- **FISH CLEANING STATION**- Fish cleaning station is not compliant with ABA standards. Not all fish cleaning stations must be compliant, but at least one for the entire project. It must be designated on map.
 - Corrective Actions- Replace current fish cleaning station with ABA compliant fish cleaning station.
- **SIGNS**- Signs are not accessible.
 - Corrective Actions- Replace current signs with signs that have raised characters and Braille below the corresponding text. Install at 48" minimum and 60" maximum from the ground and alongside the door latch (side that the door handle is on) (703).

REFERENCES

Department of Justice, United States Access Board. (2004). *Americans with disabilities act and architectural barriers act accessibility guidelines*. Washington, D.C.: United States Access Board.

Department of Justice, United States Access Board. (2013). *Final accessibility guidelines for outdoor developed areas*. Washington, D.C.: United States Access Board.

APPENDIX C

Table 208.2 Parking Spaces

Total Number of Parking Spaces Provided in Parking Facility	Minimum Number of Required accessible Parking Spaces
1 to 25	1
26 to 50	2
51 to 75	3
76 to 100	4
101 to 150	5
151 to 200	6
201 to 300	7
301 to 400	8
401 to 500	9
501 to 1000	2 percent of total
1001 and over	20, plus 1 for each 100, or fraction thereof, over 1000

Table F244.2.1 Camping Units

Total Number of Camping Units Provided in Camping Facility	Minimum Number of Accessible Camping Units Required
1	1
2 to 25	2
26 to 50	3
51 to 75	4
76 to 100	5
101 to 150	7
151 to 200	8
201 and over	8, plus 2 percent of the number over 200

Table 1011.2.1 Clear Ground Space

Outdoor Constructed Feature	Minimum Size and Location
Picnic tables	36 “ (915 mm) along all usable sides of the table measured from the back edge of the benches
Fire rings, grills, fireplaces, and woodstoves	48 “ (1220 mm) by 48 “ (1220 mm) on all usable sides of the fire ring, grill, fireplace, or woodstove. Center the space on each usable side of the grill, fireplace, and woodstove
Trash and recycling receptacles	36 “ (915 mm) by 48 “ (1220 mm) positioned for forward approach to the receptacle opening; or 30 “ (760 mm) by 60 “ (1525 mm) positioned for a parallel approach to the receptacle opening
Water hydrants	48 “ (1220 mm) by 72 “ (1830 mm) with the long side of the space adjoining or overlapping an outdoor recreation access route or trail, as applicable, or another clear ground space. Locate the space so that the water spout is 11 “ (280 mm) minimum and 12 “ (305 mm) maximum from the rear center of the long side of the space
Utility and sewage hookups	30 “ (760 mm) by 60 “ (1525 mm) with the long side of the space adjoining or overlapping an accessible parking space or pull-up space for recreational vehicles. Locate the space so that the hook-ups are at the rear center of the space. Bollards or other barriers shall not obstruct the clear ground space in front of the hook-ups
Outdoor rinsing showers	60 “ (1525 mm) by 60 “ (1525 mm) centered on the shower heads. Locate the space so that the shower pedestal or wall with the shower head are at the rear end of the space
Benches	36 “ (915 mm) by 48 “ (1220 mm) positioned near the bench with one side of the space adjoining an outdoor recreation access route or trail, as applicable. The clear ground space shall not overlap the outdoor recreation access route or trail, or another clear ground space
Telescopes and periscopes	36 “ (915 mm) by 48 “ (1220 mm) positioned for forward approach to the telescope or periscope. Provide knee and toe clearance complying with 306 under the telescope or periscope. Locate the space so that the eyepiece is centered on the space

Figure 1 Accessible Campsite

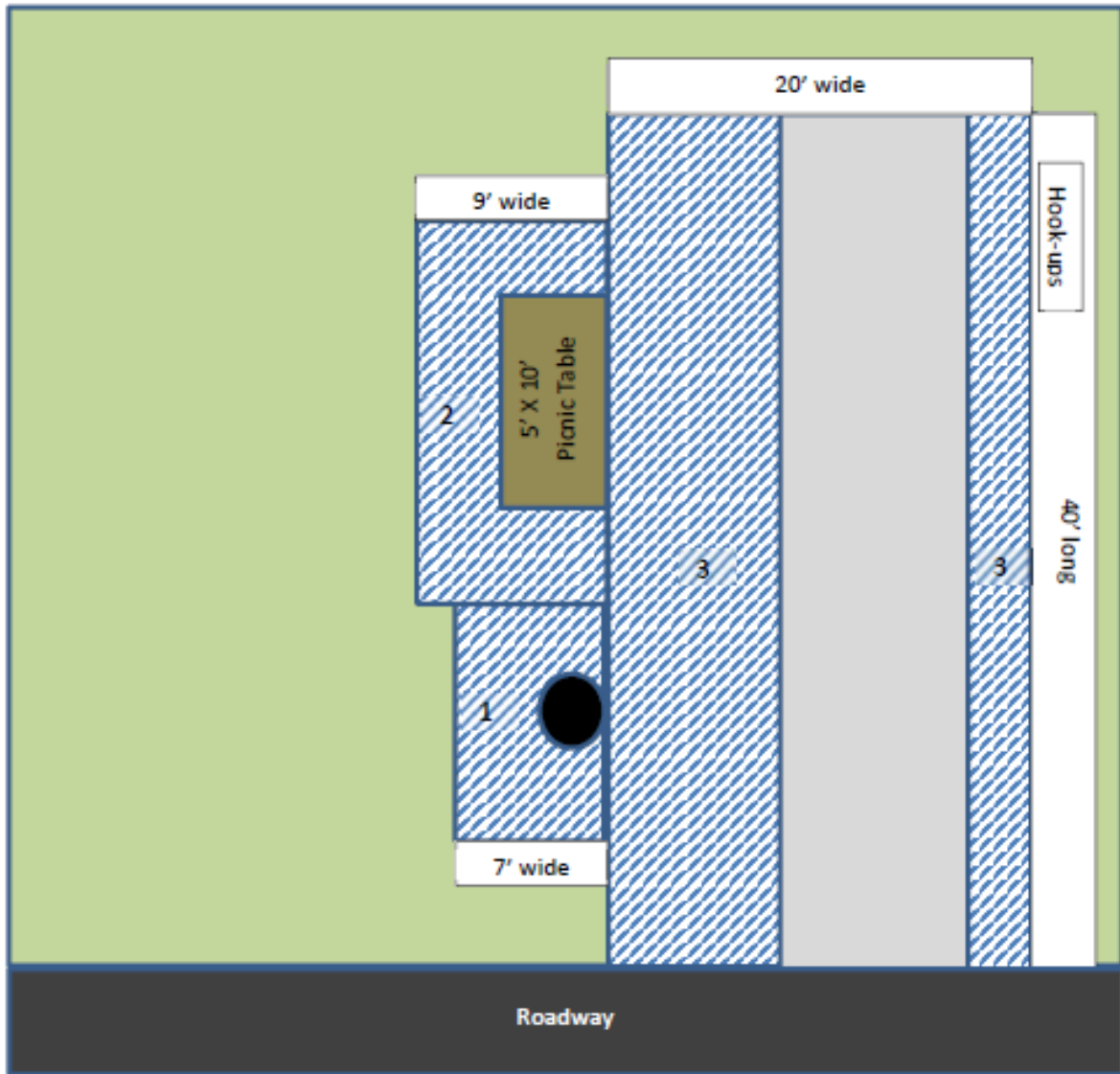


Figure 604.5.1 Side Wall Grab Bar at Water Closets

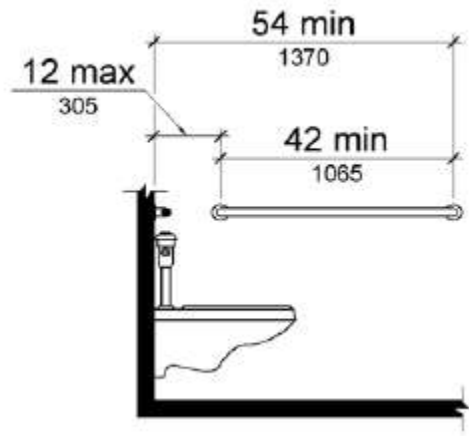


Figure 604.5.2 Rear Wall Grab Bar at Water Closets

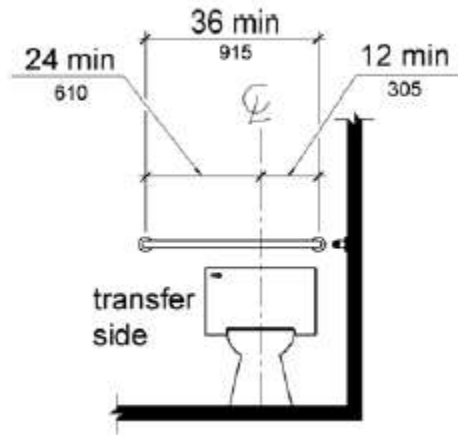


Figure 604.2 Water Closet Location

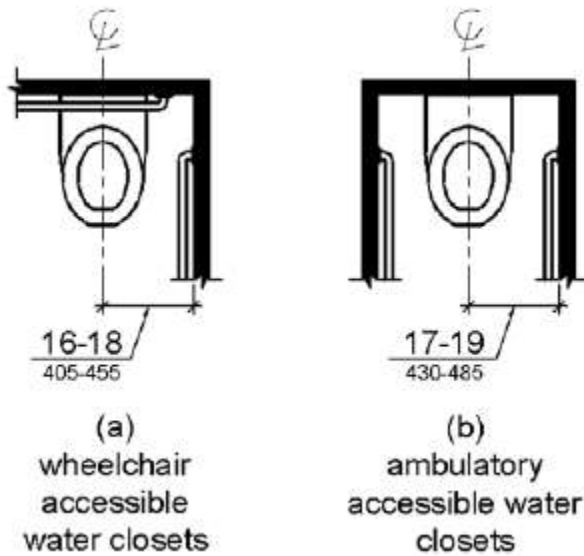


Figure 608.3.1 Grab bars for transfer type showers

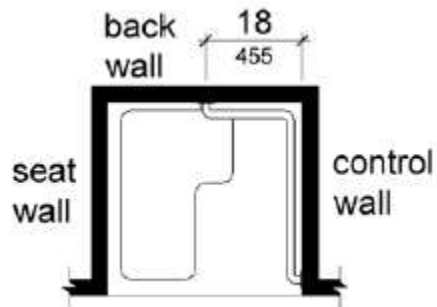
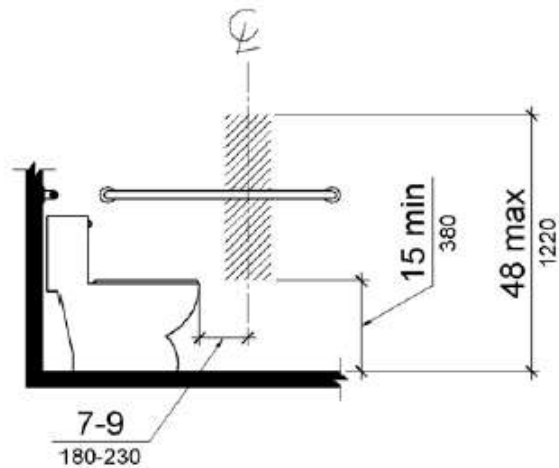


Figure 604.7 Dispenser Outlet Location



REFERENCES

Department of Justice, United States Access Board. (2004). *Americans with disabilities act and architectural barriers act accessibility guidelines*. Washington, D.C.: United States Access Board.

Department of Justice, United States Access Board. (2013). *Final accessibility guidelines for outdoor developed areas*. Washington, D.C.: United States Access Board.

APPENDIX D

PUBLIC INVOLVEMENT

Based on feedback received from the public, partners, and stakeholders, a draft master plan supplement was developed to address public access and safety at the major boat access areas and the ADA/ABA compliance of all recreational facilities at Carlyle Lake.

A series of meetings/workshops were held to gather information, public feedback and proposed solutions for the development of the supplement. Meetings held:

- Internal Meeting – A multi-disciplined Corps team determined the scope of the master plan supplement based on Corps rules and regulations, technical knowledge, user demand, and customer feedback.
- User Group Workshop – A workshop was held to present the proposed scope of the master plan supplement. Feedback from the user group (consisting of recreation users) helped further define the scope, issues and potential solutions. Comments from the user group were reviewed and incorporated into the proposed supplement.
- Public Workshop – A public workshop was held to present the proposed master plan supplement including feedback gained from the user group workshop. Comments and feedback from the public were reviewed and utilized to complete the recommendation of the final master plan supplement.

COMMENTS

Public Workshop March 2012

1. During the past three years, Carlyle has hosted the IHSA State Championship Bass Tournament. On two occasions during those three tournaments, it became necessary to get boats off the lake because of the wind. That involved a multitude of boats with no wind protection. Other lakes, including Corps facilities, have ramps with protection and courtesy docking. Our lake will soon celebrate its 50th anniversary and I think that would be a good time to celebrate with ramp protection and year round courtesy docks. I have had a personal experience, having a boat beached by a huge wave at South Shore. My quest, a state senator and I, had been fishing near the Keyesport tracks and scurried back to South Shore when the winds started. We were beached and had to wait till the storm subsided to trailer the boat.
 - a. Concur. The supplement addresses these issues. Additional breakwater protection or modification is proposed at Dam West, Dam East, Boulder, Coles Creek, and Keyesport boat ramps.
2. Construction of breakwaters around boat ramps on the main lake would provide protection of life and equipment for people using these facilities.
 - a. Concur. The supplement addresses these issues. Additional breakwater protection or modification is proposed at Dam West, Dam East, Boulder, Coles Creek, and Keyesport boat ramps.
3. Handicap access to boats and courtesy docks would also allow use of the lake facilities that otherwise is not currently possible.
 - a. Concur. The supplement addresses ABA compliance for recreational facilities at the project. The supplement also proposes that ABA compliant loading docks and fish cleaning stations at Dam West, Dam East, Boulder, Coles Creek, and Keyesport boat ramps. In addition, accessible fishing piers are proposed at Dam East and Keyesport.

Public Workshop November 28, 2012

1. Include accessible fishing pier at Dam West Boat Ramp.
 - a. Comment noted.
2. Raise the existing seawall at Dam West Boat Ramp.
 - a. Concur. The supplement proposes raising the seawall to an elevation of 453.0.
3. Curve the north breakwater to the south more to protect better from winds at Boulder Boat Ramp
 - a. Comment noted. Option was considered, but is not proposed in the supplement.

4. Ted Beier, “Floating guidewalls do not work well at all.” Referring to Coles Creek Boat Ramp protection.
 - a. Comment noted.
5. Several individuals commented that the proposed extension of the south breakwater at Coles Creek Boat Ramp would not be worth the money needed to extend the breakwater and that the breakwater would not help protect the boat ramp enough.
 - a. Comment noted. The supplement proposes the south breakwater extended 200ft to the north, northwest and adding a 150ft breakwater west of the ramp.
6. The Carlyle Sailing Association (CSA) would be willing to provide more information on the pros and cons of floating docks. Recommended docks that are smaller and lower for easier care and maintenance.
 - a. Comment noted.
7. Several individuals commented that the proposed changes would benefit and make it safer for the visitors of Carlyle Lake.
 - a. Comment noted.