



US Army Corps
of Engineers
St. Louis District

Information Paper

Metro East, IL Levee Projects

Construction (FRM)

Contact:

Hal Graef, Project Manager
(314) 225-8784
harold.w.graef@usace.army.mil

Location: The Metro East levee system is comprised of the Wood River Drainage and Levee District (including Mel Price – Upper Wood River), East St. Louis (Metro East Sanitary District), and the Prairie du Pont/Fish Lake Drainage and Levee District located in Madison, St. Clair, and Monroe Counties, Illinois.

Description: The levee system(s) were designed to withstand a flood at 54 feet on the St. Louis gage; approximately a 0.2 percent chance of exceedance (500-year event). Wood River and East St. Louis have completed reconstruction projects. In addition, each system has approved Limited Reevaluation Reports that address design deficiencies for underseepage controls. The levee systems have a significant risk of failure during high water events until the design deficiency corrections are completed. Supplemental reports for Mel Price and Wood River, incorporating risk assessment (RA) guidelines per ER 1110-2-1156 were approved in 2017 and 2019. The economic status of the Prairie du Pont/Fish Lake design deficiency project has resulted in no Federal construction funding.

Status: The sponsor, Southwestern Illinois Flood Prevention District Council (FPD), has completed \$74.6M in work to improve the system to 1.0 percent chance of exceedance to attain 100-year level of protection and maintain FEMA accreditation. Final FEMA accreditation was provided in April 2022. The FPD continues to design and construct features for Work in Kind (WIK) credit in the Wood River and East St. Louis systems. Note that the FPD has committed to design and construction of underseepage correction features in Prairie du Pont/Fish Lake Levee Systems.

Importance: Metro East Levee System provides flood protection to approximately 286,000 residents and over \$22.1 billion in economic value. Additionally, the system also protects a high concentration of industry such as petrochemical infrastructure, steel manufacturing, and ammunitions production.

Authority: Flood Control Act of 1936; and Energy and Water Development Appropriations Act of 1988 (Public Law 100-202) Section 4 of the Flood Control Act of 1938; Section 103 of WRDA 1986; Section 101(20) of WRDA 2007; Flood Control Act of 1936; WRDA 2000 and 2007.

Schedule: See Project Level Information Papers for details.

Activities for FY 24: Carryover funds will be used to manage ongoing construction contracts and coordinate with partners with respect to WIK activities, as well as complete construction on Mel Price features of work, and award the next features of work for East St. Louis (ESTL) (filter blanket) and Wood River (Pump Station Modifications and 30 additional wells).

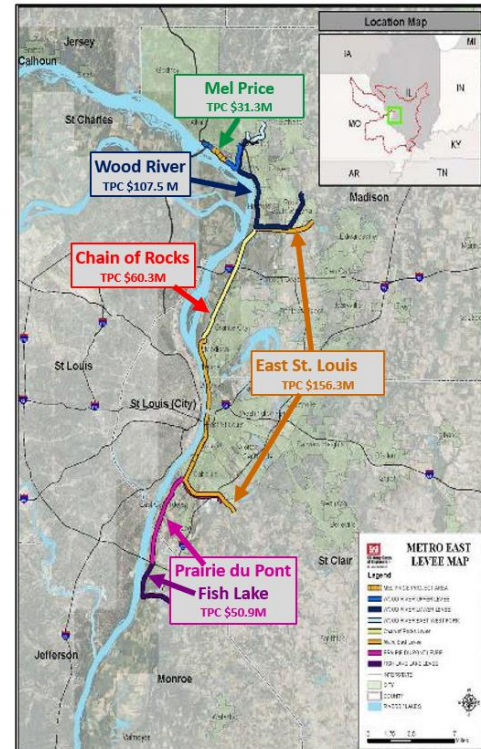


Figure 1: Vicinity of Metro East Levee Systems Map

Activities after FY 24: Manage ongoing construction contracts and coordinate with sponsors with respect to WIK activities, as well as to close out Mel Price Underseepage project, award Wood River Relief Well No. 2 contract (56 wells, plus ditching), and award ESTL contract (43 wells with collector system).

Project Partners: Wood River Drainage and Levee District, Metro East Sanitary District (MESD) and Southwestern Illinois Flood Prevention District (FPD) Council.

Congressional Interest: Senate: Durbin (IL) and Duckworth (IL);
House: Bost (IL-12), Miller (IL-15) and Budzinski (IL-13).

Financial: (Combined totals for all projects)

Estimated Federal cost: \$292,773,000
Estimated non-Federal cost: \$108,310,000
Total estimated cost: \$401,083,000 *
Total Federal funding to date: \$237,685,000

* Note that our partners have developed a plan to design and construct portions of the authorized project at their expense; namely, Prairie du Pont/Fish Lake Levee Systems