



**US Army Corps
of Engineers**
St. Louis District

Information Paper

American Bottoms Comprehensive Plan

Investigations (FRM)

Contact:

Shawn Sullivan, Strategic Planning Coordinator
(314) 331-8580

Shawn.f.sullivan@usace.army.mil

Location: The study area is located within the Federally constructed locally operated and maintained East St. Louis Levee System in Madison and St. Clair Counties, Illinois. The leveed area contains approximately 250,000 residents, \$10B in economic value, and ten disadvantaged communities. The levee system reduces risk to 86,000 acres and receives 51,000 acres of upland bluff area drainage through a network of canals and ditches that drain to 19 different pump stations that allow for gravity flow during low water and pumping operations during Mississippi River high water events.

Description: The federally authorized but incomplete interior flood control system has 14 separate interior flood control features. Many of these features were never built because they were not economically justified. WRDA 2000, Section 304 (Public Law 106-541) modified the project authorization to include ecosystem restoration as a project purpose. As a result, USACE initiated a GRR to reevaluate and reformulate the project with a focus on ecosystem restoration while capturing incidental flood risk management benefits.

Status: An approved Chief's Report was completed in 2004, recommending eight ecosystem restoration action areas. The Chief's Report was Congressionally authorized for construction in WRDA 2007. Lack of sponsor interest/capability at the time, coupled with lack of federal funding, resulted in no appreciable work being accomplished to date.

Recent extreme interior rain/flood events has generated renewed interest in pursuing implementation of flood risk reduction measures in the study area. Local sponsor interest and funding has been made available to move out with a General Reevaluation Report of the flood risk reduction measures previously developed for the area. However, a federal appropriation and new start study decision is needed before a GRR could be initiated.

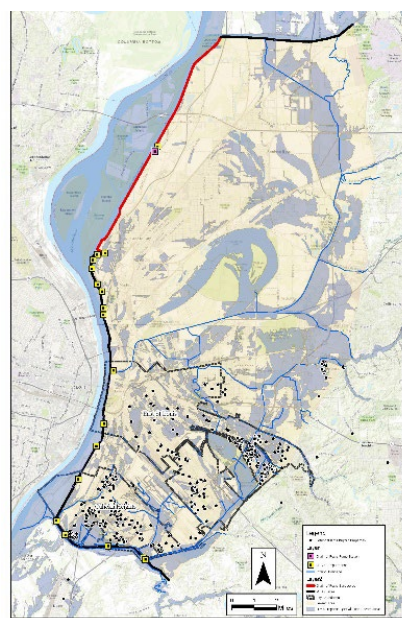
Importance: The primary problems in the study area are documented as recurring interior flooding, sedimentation, and ecosystem degradation. The volume of drainage coupled with changing climate conditions, undersized infrastructure, altered landscape and fragmented interior hydraulic system are compounding flooding problems within the leveed area.

Authority: Section 204 of the Flood Control Act of 1965,

(Public Law 89-298) authorized East St. Louis and Vicinity, Illinois Flood Protection Project for construction. Section 1001 (18) of the Water Resources Development Act of 2007, authorized the project for ecosystem restoration based on the Report of the Chief of Engineers dated December 22, 2004.

Schedule:

- TBD pending receipt of federal funding



East St. Louis Levee System with FEMA delineated flood hazard area..

Activities for FY24: Pending receipt of Federal funds, execute FCSA and initiate general reevaluation report (GRR).

Activities after FY24: Continue GRR with estimated 3-year duration.

Project Partner: Metro East Sanitary District

Congressional Interest: Senate: Durbin (IL), Duckworth (IL); House: Budzinski (IL-13).

Financial: (For GRR only)

Estimated Federal cost: \$1.5M

Estimated Non-Federal cost: \$1.5M

Total estimated cost: \$3M

Total Federal funding to date: \$0

FY 24 federal funding capability for GRR - \$500k