



**US Army Corps  
of Engineers**  
St. Louis District

## Mississippi River Between Missouri River and Minneapolis, Minnesota (Upper River)

Rivers and Harbors Act of 1930, as amended Public Resolution No. 10 (1932)

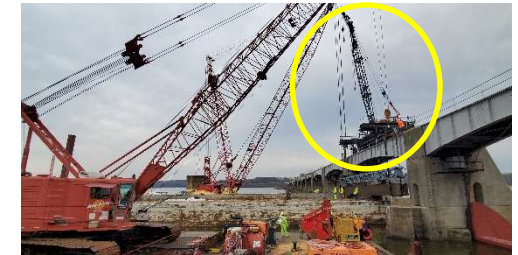
### Operation and Maintenance (NAV)

**Location and Description:** Project area extends from the mouth of the Missouri River at St. Louis upstream to Lock and Dam 22 tail water, includes 105 miles of river and 50,000 acres of public lands. The project provides a nine-foot navigation channel via a system of locks and dams; channel maintenance; dike and revetment; dredging; environmental stewardship responsibility as well as land and water-based recreational opportunities.

- FY 2022 President’s Budget \$34,951k, IJJA \$26,260k, DRSSA \$450k (baseline service level \$22,159k)
  - Operate and Maintain project at an acceptable level of service
  - Complete storm damage repairs -wetland restoration, reforestation, L25 and L24 spillway repairs, cabin removal, flood fight pump replacements
  - Complete non-routine repairs to prioritized backlog to include scour repairs to L25 guidewall and Mel Price and L24 dewatering and inspections.
  - IJJA – Repair storm damage, replace generator at Mel Price, Award Mel Price Lift Gate replacement – phase III, L24 Storm Damaged Building Repairs/replacement, shoreline and spillway repairs, and rehabilitation of Mel Price Emergency crane.
  - DRSSA – Repair storm damage on recreation facilities
  - Lock & Dam No 24 and Lock & Dam 25 lock closure Jan-Feb 2023
  - Mel Price Main Lock closures Jan-Mar 2023
- Activities after FY 2022 (top items listed)
  - Operate and Maintain project.
  - Award Phase 2 Construction Contract, Replacement of Upstream Liftgate at Mel Price. Remains high risk of closure to navigation, numerous emergency closures for remedial repairs, critical backlog complete FY21-23
  - Replace L24 Bulkhead Crane
  - Award Task Orders, L24 IDIQ Rehab Dam Piers
  - Mel Price dam water control manual update
- Status
  - Commercial products passing through the project in FY21 were valued at an estimated \$22 billion.
  - Continued unscheduled closures at Mel Price due to chronic liftgate structural failure issues.
  - Levels of public service reduced at National Great Rivers Museum due to funding decisions
  - Issues with silt at marinas and boat ramps



*Mel Price Lock liftgate replacement, supply & phase I construction contracts awarded in FY21; Final Phase award TBD*



*Undersized Lock 25 bulkhead hoist crane assisted by floating plant in routine maintenance, identified as very high risk, complete FY22.*



*Lock 24 Dam Pier Rehab to include replacement of failing Gate Hoist Chains, Rehab of Bridge, and Repairs to Gates; \$40M critical backlog, unfunded in FY22.*

VALUE TO NATION	
Latest Ton Miles	4,823,527,525
Latest Tonnage	63,594,243
Project Cost per Ton	\$0.62
FY19 Visitor Spending	\$34,767,000
FY19 Jobs Supported (Rec spending only)	278
Rec Area Management	36
Acres Managed	50,000

	FY19	FY20	FY21	FY22
- Federal Allocation	\$38,914k	\$30,353k	\$41,801k	\$34,951k
- Supplemental	\$0	\$369k	\$369k	\$0
- 1% Emergency	\$0	\$0	\$0	\$0
- IJJA	\$0	\$0	\$0	\$26,260k
- DRSSA	\$0	\$0	\$0	\$450k
-Non Appropriated Contributions	0	\$650k	\$	TBD
- Total Visits	993,000	1,376,000	1,379,718	TBD

SAMPLE