



**US Army Corps
of Engineers**
St. Louis District

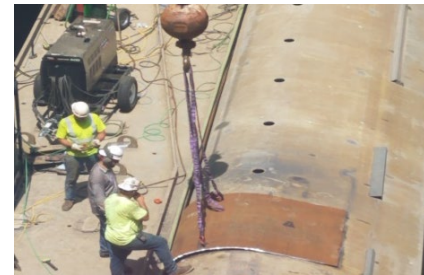
Mississippi River Between Missouri River and Minneapolis, Minnesota (Upper River)

Rivers and Harbors Act of 1930, as amended Public Resolution No. 10 (1932)

Operation and Maintenance (NAV)

Location and Description: Project area extends from the mouth of the Missouri River at St. Louis upstream to Lock and Dam 22 tail water, includes 105 miles of river and 50,000 acres of public lands. The project provides a nine-foot navigation channel via a system of locks and dams; channel maintenance; dike and revetment; dredging; environmental stewardship responsibility as well as land and water-based recreational opportunities.

- FY 2021 Allocation \$41,801k, FY 2021 President’s Budget \$40,790k (baseline service level \$22,159k)
 - Operate and Maintain project at an acceptable level of service
 - Replace Liftgate at Mel Price Locks & Dam, award Supply Contract and Phase I Construction Contract, \$14M
 - Replacement of Upstream Miter Gate anchorages at L25 funded, critical high risk backlog repair.
 - Award 5-year IDIQ contract to Rehab dam piers at Lock & Dam 24, \$40M of regionally prioritized critical backlog
 - Complete non-routine repairs to prioritized backlog to include bulkhead repairs, scour repairs to L25 guidewall, and upgrades to computerized lock control systems.



Mel Price Lock liftgate replacement, supply & phase I construction contracts award in FY21.



Locks 24/25 gate anchorage replacement, identified as very high risk to waterway and economy, complete winter FY21.



Lock 24 Dam Pier Rehab to include replacement of failing Gate Hoist Chains, Rehab of Bridge, and Repairs to Gates; \$40M critical backlog, baseline awarded in FY20, task orders unfunded in FY21.

- Activities after FY 2021 (top items listed)
 - Operate and Maintain project.
 - Award Phase 2 Construction Contract, \$7M, Replacement of Upstream Liftgate at Mel Price. Remains high risk of closure to navigation, numerous emergency closures for remedial repairs, \$21M critical backlog complete FY21-23
 - Replace L24 Bulkhead Crane, \$3.5M
 - Award Task Orders, L24 IDIQ Rehab Dam Piers

- Status
 - Commercial products passing through the project in FY 2019 were valued at an estimated \$22 billion.
 - Continued unscheduled closures at Mel Price due to chronic liftgate structural failure issues.
- Levels of public service reduced at National Great Rivers Museum due to funding decisions.

VALUE TO NATION	
Latest Ton Miles	3,667,441,205
Latest Tonnage	55,880,727
Project Cost per Ton	\$0.27
FY19 Visitor Spending	\$34,767,000
FY19 Jobs Supported (Rec spending only)	278
Rec Area Management	36
Acres Managed	50,000

	FY18	FY19	FY20	FY21
- Federal Allocation	\$47,711k	\$38,914k	\$30,353k	\$41,801k
- Supplemental	\$0		\$369k	\$0
- 1% Emergency	\$0	\$0	\$0	\$0
-Non Appropriated Contributions	0	0	\$650k	TBD
- Total Visits	1,434,000	993,000	1,376,000	TBD

SAMPLE