



US Army Corps
of Engineers
St. Louis District

Mississippi River Between the Ohio & Missouri Rivers (Lower River)

River and Harbor Acts of 1910, 1927, and 1930 as amended by the River and Harbor Acts of 1945 and 1958.

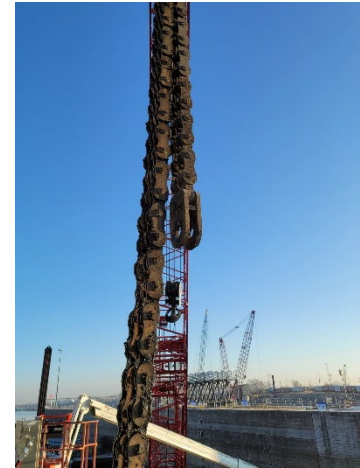
Operation and Maintenance (NAV)

Location and Description: Project responsibility extends from the mouth of the Ohio River to the Missouri River at the northern boundary of the City of St. Louis including 195 miles of Open River, St. Louis Harbor and 10,000 acres of public land. Project provides nine-foot navigation channel with a canal/Locks 27 at Chain of Rocks, fixed crest rock dam, channel maintenance, dredging, and flood risk management. Project has environmental stewardship responsibility as well as land-and water-based recreational opportunities.

- FY 2021 Allocation \$29,661k, FY 2021 President’s Budget \$29,661k (baseline service level \$26,306k)
 - Operate and maintain project at acceptable level of service
 - Non-routine repairs to regionally prioritized high risk backlog to include Chain of Rocks Canal phase V shoreline repairs, Locks 27 Liftgate Hoisting Chain Replacement, Unwater and Inspect Locks 27 Main Lock, Control System Upgrades, and Repairs to Vessel Mooring Facility

- Activities after FY 2021 (top items listed)
 - Operate and maintain project
 - Routine channel work, dredging and maintenance of training structures.
 - Repair Embedded metals at Locks 27
 - Replace Miter Gate anchorages at Locks 27

- Status
 - Backlog reduced by \$69.5M (\$33M CG; \$36.5M O&M) since FY 2006
 - Locks 27 unscheduled closures cost U.S. economy \$2.7M/day
 - Dredging and Dredge planning complicated by rapid rise and fall in river stages



Locks 27 liftgate hoisting chains replacement; high risk for navigation channel with significant economic impacts; funded in FY21



Locks 27 damaged embedded metals, high risk regionally identified backlog maintenance, unfunded in FY21.

	FY18	FY19	FY20	FY21
- Federal Allocation	\$30,749k	\$30,513k	\$19,795k	\$29,661k
- Supplemental	\$0		\$ 5,908k	\$0
-Non Appropriated Contributions	0	0	0	TBD
- Total Visits	231,000	132,000	215,000	TBD

VALUE TO NATION	
Latest Ton Miles	16,240,788,000
Latest Tonnage	98,420,000
Project Cost per Ton	\$0.21
FY19 Visitor Spending	\$4,050,783
FY19 Jobs Supported (Rec spending only)	32
Rec Area Management	8
Acres Managed	3,172

SAMPLE