



**US Army Corps  
of Engineers**  
St. Louis District

# Mississippi River between the Ohio and Missouri Rivers (Regulating Works) Dogtooth Bend (Len Small)

Rivers and Harbors Acts of 1910, 1927, and 1930.

## Construction (Navigation)

**Location:** Dogtooth Bend is located at Upper Mississippi River Miles 40 to 20 with the lower section of this river reach being highly sinuous. The Len Small Levee Breach occurred at Illinois bankline at RM 33.3 in Alexander County Illinois.

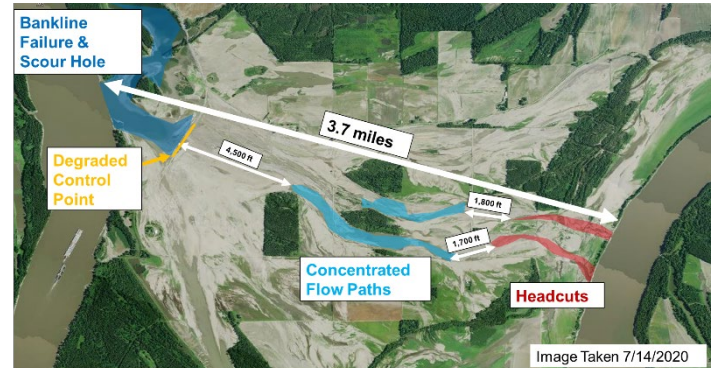
**Description:** This project was designed to prevent a channel cutoff from forming across the Dogtooth Bend Peninsula, impacting our ability to maintain authorized navigation channel dimensions. If a channel cutoff did form commercial navigation would be impacted/lost for a significant period.

**Status:** Multiple phases of maintenance repairs post Len Small Levee breach after the 2016 and subsequent floods were completed to ensure navigation channel requirements are met. Conditions deteriorated significantly after the 2019 flood. Urgent work was completed in the Spring of 2020 to stabilize the upper section and restore revetments on the lower section of Dogtooth Bend. Additionally, emergency work was completed January 2021 to restore grade on the upper portion of Dogtooth Bend to prevent a channel cutoff from forming.

**Importance:** The Mississippi River is an artery of commerce critical to the movement of hundreds of millions of tons of essential goods such as corn, grain, coal, petroleum, chemicals, and many other products important to the national economy.

**Risk:** A Risk Assessment needs to be performed to determine what/if any additional potential risks associated with future channel cutoff concerns. No funding in FY21 Budget to execute this requirements

**Consequence:** Cargo valued at over \$7 billion, including 300 million bushels of agricultural products and 3.8 million tons of coal could experience shipping delays that cause ripple effects and damage local economies up and down the Mississippi and Ohio Rivers.



*Conditions of Dogtooth Bend Peninsula post 2019 Flood*

**Activities for FY 21:** Complete construction of the Dogtooth Bend Emergency work (January 2021).

**Acquisition Strategy:** No contracts to be awarded in FY21.

**Activities after FY 21:** Continue to monitor the site and ensure navigation interests are preserved. Execute recommendations identified in risk assessment.

**Project Sponsor/Customer:** This project is 100% federally funded. Stakeholders include river navigation industry, State and Federal conservation agencies, and environmental NGOs.

**Congressional Interest:** Senate: Blunt and Hawley (MO) and Senators Durbin and Duckworth (IL). House: Bost (IL-12), LaHood, (IL-18), Miller (IL-15), Davis (IL- 13), Luetkemeyer (MO-3) and Smith (MO-8).

Phase	FY 21 Allocation
Construction	\$0