



**US Army Corps
of Engineers**
St. Louis District

Mississippi River Between the Ohio & Missouri Rivers (Lower River)

River and Harbor Acts of 1910, 1927, and 1930 as amended by the River and Harbor Acts of 1945 and 1958.

Operation and Maintenance (NAV)

Location and Description: Project responsibility extends from the mouth of the Ohio River to the Missouri River at the northern boundary of the City of St. Louis including 195 miles of Open River, St. Louis Harbor and 10,000 acres of public land. Project provides nine-foot navigation channel with a canal/Locks 27 at Chain of Rocks, fixed crest rock dam, channel maintenance, dredging, and flood risk management. Project has environmental stewardship responsibility as well as land-and water-based recreational opportunities.

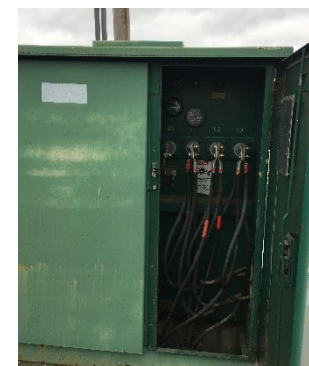
- FY 2020 Allocation \$25,045k, FY 2020 President’s Budget \$25,045k (baseline service level \$26,306k)
 - Operate and maintain project
 - Non-routine repairs to regionally prioritized high risk backlog to include phase IV shoreline repairs, Locks 27 Electrical Service Upgrade, repairs to vessel mooring facility, and paint and repair lock bullnose areas.

- Activities after FY 2020 (top items listed)
 - Operate and maintain project
 - Routine channel work, dredging and maintenance of training structures.
 - Unwater and make repairs to Locks 27 main lock chamber
 - Repair Embedded metals at Locks 27

- Status
 - Backlog reduced by \$68M (\$33M CG; \$35M O&M) since FY 2006
 - Locks 27 unscheduled closures cost U.S. economy \$2.7M/day
 - Critical routine baseline channel work unfunded to include training structures/revetments/bankline stabilization. Continued reduction of this critical work leads to less dependable and stable channel.



Bank-line failure at St. Genevieve, critical routine maintenance to revetments reduced in FY20, high risk of failures like this, with significant economic impact



Locks 27 electrical service is insufficient for current power needs and unreliable; high risk for navigation channel with significant economic impacts; repairs funded in FY19 Workplan, complete repairs in FY20

	FY17	FY18	FY19	FY20
- Federal Allocation	\$24,658k	\$30,749k	\$30,513k	\$25,045k
- Supplemental	\$2,230k*	\$0		\$ 1,785k
-Non Appropriated Contributions	\$176k	TBD	TBD	TBD
- Total Visits	187,000	233,000	TBD	TBD

* Change in Corps’ Visitation Estimation Reporting System process

VALUE TO NATION	
Latest Ton Miles	122,260,864,000
Latest Tonnage	114,162,000
Project Cost per Ton	\$0.21
FY15 Visitor Spending	\$20,824,000
FY15 Jobs Supported (Rec spending only)	708
Rec Area Management	6
Acres Managed	10,000

SAMPLE