



**US Army Corps
of Engineers**
St. Louis District

Information Paper Lake Shelbyville, IL

Flood Control Acts of 1944 and of 1958

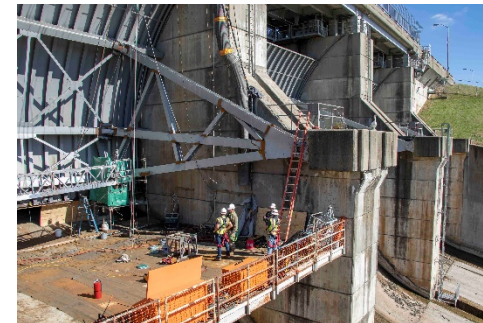
Operation and Maintenance (FRM)

Location and Description: The project provides flood control, water supply, recreation, conservation of fish and wildlife, and water quality control and augments navigation flows downstream on the Kaskaskia River. The lake extends northeastward to approximately river mile 275 through Shelby, Moultrie, Douglas, and Coles Counties.

- FY 2020 Allocation \$6,074k, FY 2020 President’s Budget \$5,161k (baseline level \$5,818k)
 - Operate and maintain project at a less than acceptable service level (including closure of Opossum Creek and Lone Point Recreation Area, reduced camping availability, reduce day use availability, reduced staffing, outreach and public safety efforts)
 - Complete repair of concrete drainage systems on east and west side of main dam, Indiana bat survey, invasive species removal, boundary monumentation and rectification, and complete repair and paint metal works on Main Dam west Tainter Gate.

- Activities after FY 2020 (top items listed)
 - Operate and maintain project at acceptable service level
 - Restore Navigation depth to the floating facilities at Sullivan Marina
 - Repair and paint metal works and bridge on main dam
 - Road Maintenance
 - Replace recreational facilities to meet ADA requirements/retire buildings
 - Provide operations and maintenance, dam safety, water control and real estate for compliance management.

- Status
 - Implement sustainability measures at project office and visitor center to reduce energy costs



*Main Dam west Tainter Gate
Repair and Painting*

*(Estimate)	FY17	FY18	FY19	FY20
- Federal Allocation	\$6,195k	\$9,085k	\$6,372k	\$6,074k
- Supplemental	\$3,108k	\$0	\$0	\$0
- Non Appropriated Contributions	\$502k	\$672k	\$667k	TBD
- Rec Fees Collected	\$676k	\$706k	\$719k	TBD
- Total Visits	2,084,000	2,332,000	TBD	TBD
VALUE TO NATION				
Flood Damages Prevented (cumulative 1993-2018 Carlyle-Shelbyville)			\$789,117,000	
FY16 Visitor Spending			\$40,301,000	
FY16 Jobs Supported			381	
Rec Area Management			12 by Corps; 5 by out-grant	
Acres Managed			24,500 by Corps; 9,900 by others	

