



**US Army Corps
of Engineers**
St. Louis District

Flood Control Act of 1936; Energy and Water Development Appropriations Act of 1988 (Public Law 100-202)

Information Paper

East St. Louis, IL

Construction (FRM)

Location: The East St. Louis levee system is located in St. Clair and Madison Counties, IL, along the left descending bank of the Mississippi River between river miles 175 and 195 above the Ohio River.

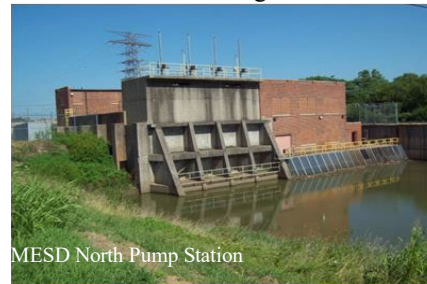
Description: The levee system was designed to withstand a flood at 54 feet on the St. Louis gage; approximately a 0.2 percent chance of exceedance (500-year event) and provides flood protection to approximately 250,000 residents and over \$9.9 billion in economic value. The East St. Louis, Illinois, deficiency correction project will correct underseepage and through-seepage and consists of new relief wells, grouting wood stave relief wells, ditching and pipe collector systems, a seepage pump station, a lift station, a variable frequency drive, seepage berms, cutoff walls, riverside clay blanket, and environmental and archeological mitigation work.

Status: Levee system will have a significant risk of failure during high water events unless underseepage design deficiency and through-seepage corrections are made. The system currently does not provide the authorized level of protection, which is equivalent to 54' on the St. Louis Mississippi River gauge (approximately a 500-year event) due to aged infrastructure and uncontrolled underseepage. Rehabilitation of aged infrastructure is complete. Design deficiency corrections are underway to address uncontrolled underseepage. Our project partner, Southwestern Illinois Flood Prevention District Council (FPD), has completed work to improve the levee to 1.0 percent chance of exceedance to attain 100-year level of protection and maintain FEMA accreditation. Incorporation of new project information resulted in a change to the total project costs for design deficiency corrections. Updated project costs were certified in November 2017. The FPD continues to request that the Corps mandate the use of Project Labor Agreements (PLA) for construction contracts in the geographic area. The Army and the Corps delivered as promised on an alternate acquisition strategy to address the PLA issue; however, the outcome did not meet FPD expectations. The FPD has indicated their desire to provide cost share funds as Work in Kind (WIK) credit and has developed a plan for designing and constructing portions of the authorized project. The FPD initiated WIK activities in 2016. An updated Integral Determination Report (IDR) reflecting the new certified project cost was approved by MVD on September 20, 2018. The Amendment to the Project Partnership Agreement (PPA) for WIK was executed on April 1, 2019. The project has been funded to completion.

Importance: The East St. Louis levee has high probability of failure during significant flood events due to inadequate underseepage and through-seepage controls. Serious underseepage problems were observed during the 1993 flood. Approximately 250,000 residents and \$9.9 billion in economic value are protected by the levee.

Risk: Without the deficiency correction project, the levee is in danger of failing due to underseepage or through-seepage problems during a flood.

Consequence: A levee failure would have catastrophic life, economic, and environmental consequences including damages to commercial/heavy industrial development, environmental and agricultural losses, spread of hazardous and toxic wastes, and significant loss of life.



MESD North Pump Station

Activities for FY 20: Funds were used to award a \$32,302,000 construction contract for 4,450 LF of deep cutoff wall, and continue design on the next project increments.

Acquisition Strategy: Deep cutoff wall contract was awarded utilizing the Best Value with Trade off Unrestricted Firm Fixed Price acquisition strategy in FY20.

Activities after FY20:

Carryover funds will be used to continue design and award construction contracts of the authorized project. Next construction contract award is scheduled for FY21.

Project Partner/Customer: Metro East Sanitary District and Southwestern Illinois FPD

Congressional Interest: Senate: Durbin (IL) and Duckworth (IL) House: Bost (IL-12), Shimkus (IL-15) and Davis (IL-13).

Phase	FY 20 Allocation
Construction	\$0