



**US Army Corps
of Engineers**
St. Louis District

Mississippi River Between Missouri River and Minneapolis, Minnesota (Upper River)

Rivers and Harbors Act of 1930, as amended Public Resolution No. 10 (1932)

Information Paper

Operation and Maintenance (NAV)

Location and Description: Project area extends from the mouth of the Missouri River at St. Louis upstream to Lock and Dam 22 tail water, includes 105 miles of river and 50,000 acres of public lands. The project provides a nine-foot navigation channel via a system of locks and dams; channel maintenance; dike and revetment; dredging; environmental stewardship responsibility as well as land and water-based recreational opportunities.

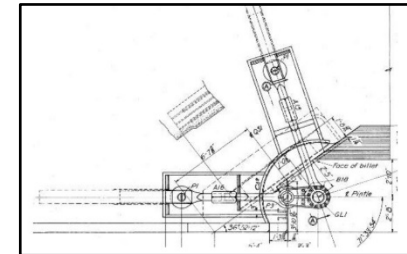
- FY 2019 Allocation \$38,914k, FY 2018 President’s Budget \$39,140k (baseline service level \$22,159k)
 - Operate and maintain project
 - Replacement of miter gate anchorages at L24 and L25 funded (\$14M), critical high risk backlog repair.
 - Complete FY18 non-routine repairs to regionally prioritized backlog to include Lock 25 Dam Pier Rehab Contract.

- Activities in FY 2020, President’s Budget \$25,159k (top items listed)
 - Operate and maintain project.
 - Lock and Dam 25 Guidewall Repairs.
 - Critical routine baseline channel work, training structures/revetments/bankline stabilization, to reduce high dredging costs, prevent bankline failures, and insure channel reliability are not funded.

- Status
 - Commercial products passing through the project in FY 2017 were valued at an estimated \$22 billion.
 - Unscheduled closures at Mel Price due to chronic liftgate structural failure issues.
 - National Great Rivers Museum hosted more than 60,000 visits and continues to show a steady increase over the last 10 years.



Mel Price Lock liftgate, increased unscheduled closures with high economic impacts.



Locks 24/25 gate anchorage, critical fatigue failure mode, identified as very high risk, high consequence to waterway.



Lock 25 Dam Pier replacement of failing Gate Hoist Chains, Rehab of Bridge, and Repairs to Gate. \$35M critical backlog executed in strategic task orders.

VALUE TO NATION	
Ton Miles (FY16)	81,254,245,000
Tonnage (FY16)	65,270,000
Project Cost per Ton	\$0.27
FY16 Visitor Spending	\$40,830,000
FY16 Jobs Supported (Rec spending only)	382
Rec Area Management	36
Acres Managed	50,000

	FY16	FY17	FY18	FY19
- Federal Allocation	\$22,226k	\$22,018k	\$47,711k	\$38,914k
- Supplemental	\$ 600k	\$ 4,600k*	\$0	
- 1% Emergency	\$0	\$0	\$0	
-Non Appropriated Contributions	\$ 1,146k	\$1,322k	TBD	TBD
- Total Visits	1,395k	TBD	TBD	TBD

SAMPLE