



**US Army Corps  
of Engineers®**

ST. LOUIS DISTRICT  
ATTN: CEMVS-DE  
1222 SPRUCE STREET  
ST. LOUIS MO 63103-2833  
HTTP://WWW.MVS.USACE.ARMY.MIL/

**NOTICE TO NAVIGATION INTERESTS**

**DATE:** 12/17/2020  
**POC:** Mike Rodgers  
314-331-8215

**NOTICE NUMBER:** 13026  
**LOCAL NUMBER:** 20-30  
**WATERWAY:** UPPER MISSISSIPPI

**EFFECTIVE:** Immediately thru 01/07/2021 23:59 CST

---

**TRANSIT ADVISORY  
MILE 69.1  
Upper Mississippi River**

1. A post construction survey for a newly constructed weir at mile 69.1 UMR has identified two high areas along the weir.
2. Location 1, is 8.8-ft below LWRP and 350-ft right of the sailing line. Location 2, is 11.0-ft below LWRP and 440-ft right of the sailing line. Please see attached drawing for reference.
3. At location 1, 9-ft of water depth exists at a gage reading of St. Louis -3.0, or Cape Girardeau 5.6.
4. The M/V Pathfinder set a green buoy today at mile 69.1 marking location 1. In addition, a green E-ATON will start broadcasting at location 1 tomorrow, 18 December 2020.
5. Plans are being made to degrade these locations, with equipment mobilizing the week of 4 January 2021, with work being performed on 5 and 6 January 2021. The M/V Pathfinder will be the contact boat on site. The M/V Pathfinder will monitor VHF-FM radio channels 13 and 16. Mariners are urged to transit at their slowest safe speed to minimize wake and proceed with caution after passing arrangements have been made. No river closure is anticipated.
6. It is recommended that tows favor the red buoy line, be aware of their draft, and transit this area with caution as river levels drop.

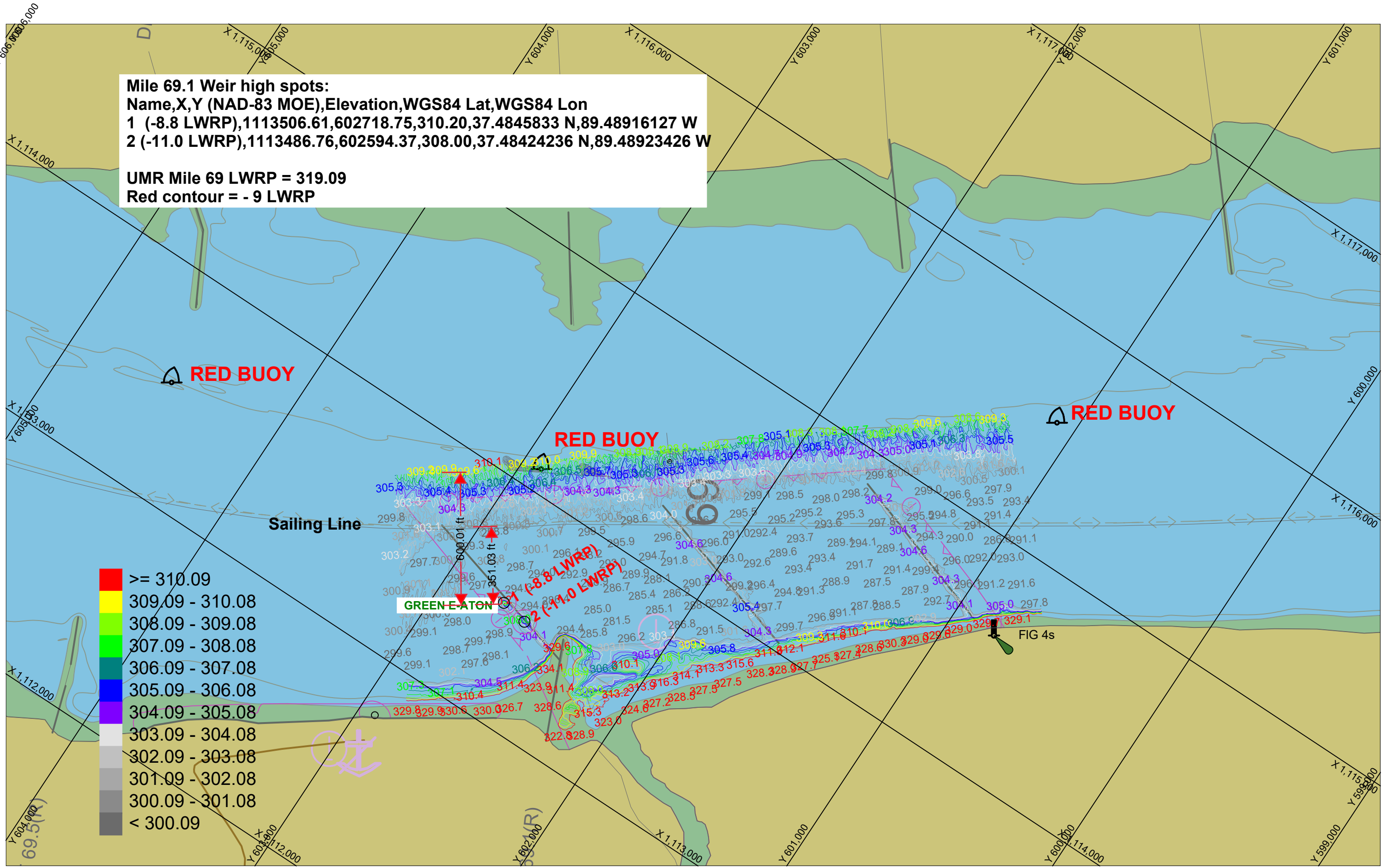
**FOR THE DISTRICT ENGINEER:**

//signed//

Andrew C. Schimpf, P.E.  
Rivers Project Manager

**Mile 69.1 Weir high spots:**  
**Name,X,Y (NAD-83 MOE),Elevation,WGS84 Lat,WGS84 Lon**  
**1 (-8.8 LWRP),1113506.61,602718.75,310.20,37.4845833 N,89.48916127 W**  
**2 (-11.0 LWRP),1113486.76,602594.37,308.00,37.48424236 N,89.48923426 W**

**UMR Mile 69 LWRP = 319.09**  
**Red contour = - 9 LWRP**



- >= 310.09
- 309.09 - 310.08
- 308.09 - 309.08
- 307.09 - 308.08
- 306.09 - 307.08
- 305.09 - 306.08
- 304.09 - 305.08
- 303.09 - 304.08
- 302.09 - 303.08
- 301.09 - 302.08
- 300.09 - 301.08
- < 300.09