



**US Army Corps
of Engineers®**

ST. LOUIS DISTRICT
ATTN: CEMVS-DE
1222 SPRUCE STREET
ST. LOUIS MO 63103-2833
HTTP://WWW.MVS.USACE.ARMY.MIL/

NOTICE TO NAVIGATION INTERESTS

DATE: 09/19/2017
POC: Lance Engle
314-865-6343

NOTICE NUMBER: 7994-1
LOCAL NUMBER: 17-18A
WATERWAY: ILLINOIS WATERWAY

EFFECTIVE: 09/17/2017 15:30 thru Until Further Notice CDT

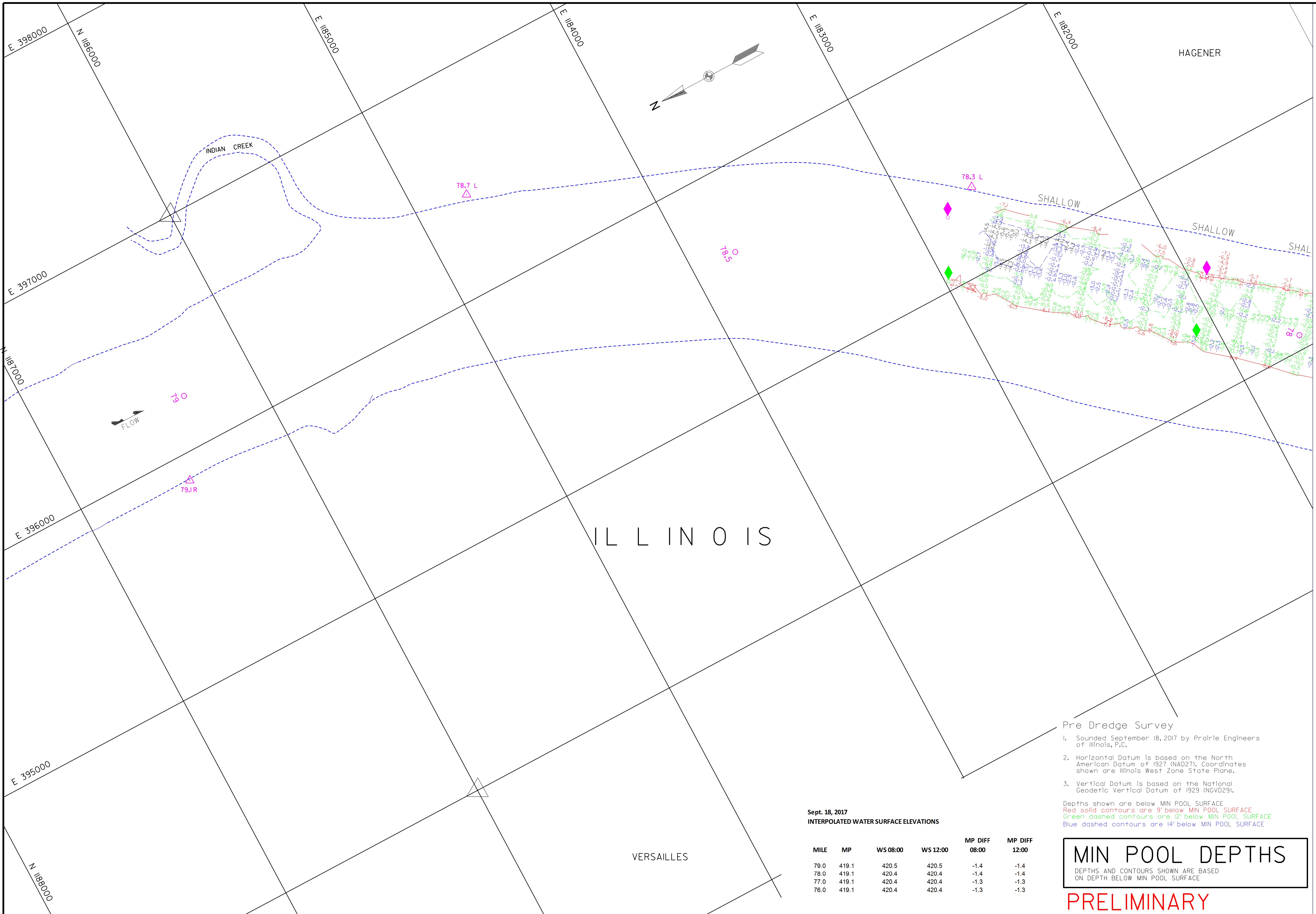
**WATERWAY CLOSURE - AMMENDMENT
Mile 77 - 78 Illinois Waterway**

1. USCG Sector Upper Mississippi River has closed the Illinois Waterway mile 77 - 78 due to several groundings on 17 September 2017.
2. The USACE Dredge Goetz is anticipated to arrive on Friday, 22 September to start dredging. It is estimated to take 48 hours after arrival to prepare a pilot channel at mile 77 ILWW prior to resuming traffic.
3. A survey was performed on 18 September and is attached for reference. Soundings are referenced at minimum pool. At mile 77, add 1.3-ft to the soundings to get actual water depth at the time of the survey.
4. A new survey is schedule for tomorrow 20 September to monitor channel conditions and will be made available as soon as possible.
5. An amendment will be provided as more information becomes available.

FOR THE DISTRICT ENGINEER:

//signed//

AndrewC. Schimpf, P.E.
Rivers Project Manager

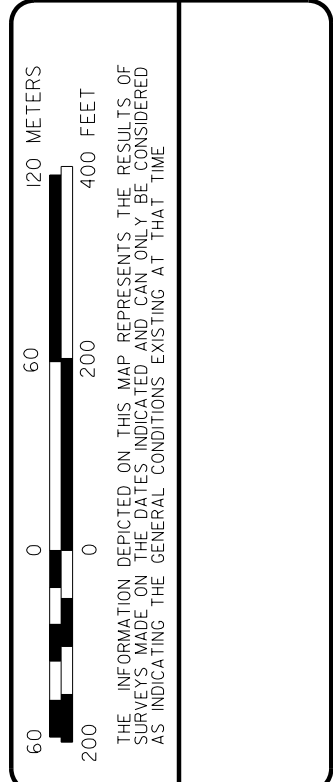


CASE RECORD	
ZERO N.G.V.D.	48.0
WATER SURFACE	48.5
LAGRANGE LOCK (L)	49.3
MILE	70.8
MIN POOL	49.1
DATE	49.0
	420.5 (08:00)
	420.2 (12:00)
ELEVATIONS ARE REFERRED TO NAVD83 UNLESS OTHERWISE NOTED. WATER SURFACE ELEVATIONS ARE REFERRED TO NAVD83 UNLESS OTHERWISE NOTED.	

Survey Date: September 18, 2017
 SUBMITTED:
 Chief, Engr. Data, Mgmt. Sect.
 File Name: 0761817-mp-sd1.dgn
 Plot Date: 9/18/2017
 Plot Scale: 1" = 200'

Surveyed by:
 PRAIRIE ENGINEERS
 Drawn by: PCE by:
 BUB
 Reviewed by:
 APPROVED:
 Chief, Geospatial Branch

U.S. ARMY ENGINEER DIVISION
 CORPS OF ENGINEERS
 ST. LOUIS, MISSOURI
 ILLINOIS RIVER
 PRE DREDGE SURVEY
 RIVER MILES 078.2 - 076.0



- Pre Dredge Survey**
- Sounded September 18, 2017 by Prairie Engineers of Illinois, P.C.
 - Horizontal Datum is based on the North American Datum of 1927 (NAD27). Coordinates shown are Illinois West Zone State Plane.
 - Vertical Datum is based on the National Geodetic Vertical Datum of 1929 (NGVD29).

Sept. 18, 2017
 INTERPOLATED WATER SURFACE ELEVATIONS

MILE	MP	WS 08:00	WS 12:00	MP DIFF 08:00	MP DIFF 12:00
79.0	419.1	420.5	420.5	-1.4	-1.4
78.0	419.1	420.4	420.4	-1.4	-1.4
77.0	419.1	420.4	420.4	-1.3	-1.3
76.0	419.1	420.4	420.4	-1.3	-1.3

MIN POOL DEPTHS
 DEPTHS AND CONTOURS SHOWN ARE BASED ON DEPTH BELOW MIN POOL SURFACE

PRELIMINARY

PLATE NUMBER
 2



CASE RECORD	
WATER SURFACE	LADANGE LOCK (L)
ZERO N.G.V.D.	48.0
MILE	80.3
MIN POOL	49.1
DATE	18 SEP 2017
ELEVATIONS ARE REFERRED TO NAZD - CONTOURS ARE BELOW WSPS (MIN WATER REFERENCE PLANE LAKE/POUND) (L.S.)	

SURVEY DATED September 18, 2017	
SUBMITTED:	
Chief, Engr. Data Mgmt. Sect.	File Name: 076187-mp-and-dgn
Chief, Geospatial Branch	Plot Date: 9/18/2017
	Plot Scale: 1" = 200'

SURVEYED BY:	
PRairie ENGINEERS	Drawn by: PCC by:
	BBB
	Reviewed by:
	APPROVED:
	Chief, Geospatial Branch

U.S. ARMY ENGINEER DIVISION
CORPS OF ENGINEERS
ST. LOUIS, MISSOURI

ILLINOIS RIVER
PRE DREDGE SURVEY
RIVER MILES 078.2 - 076.0

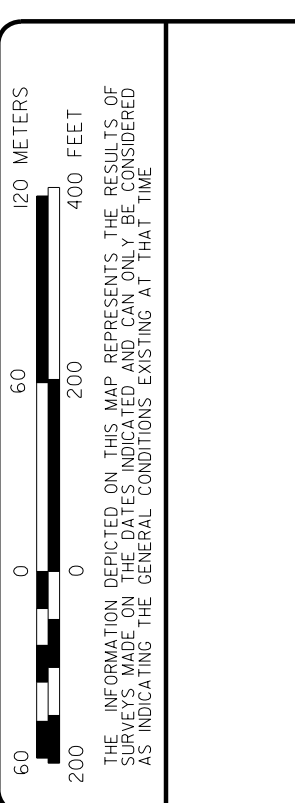
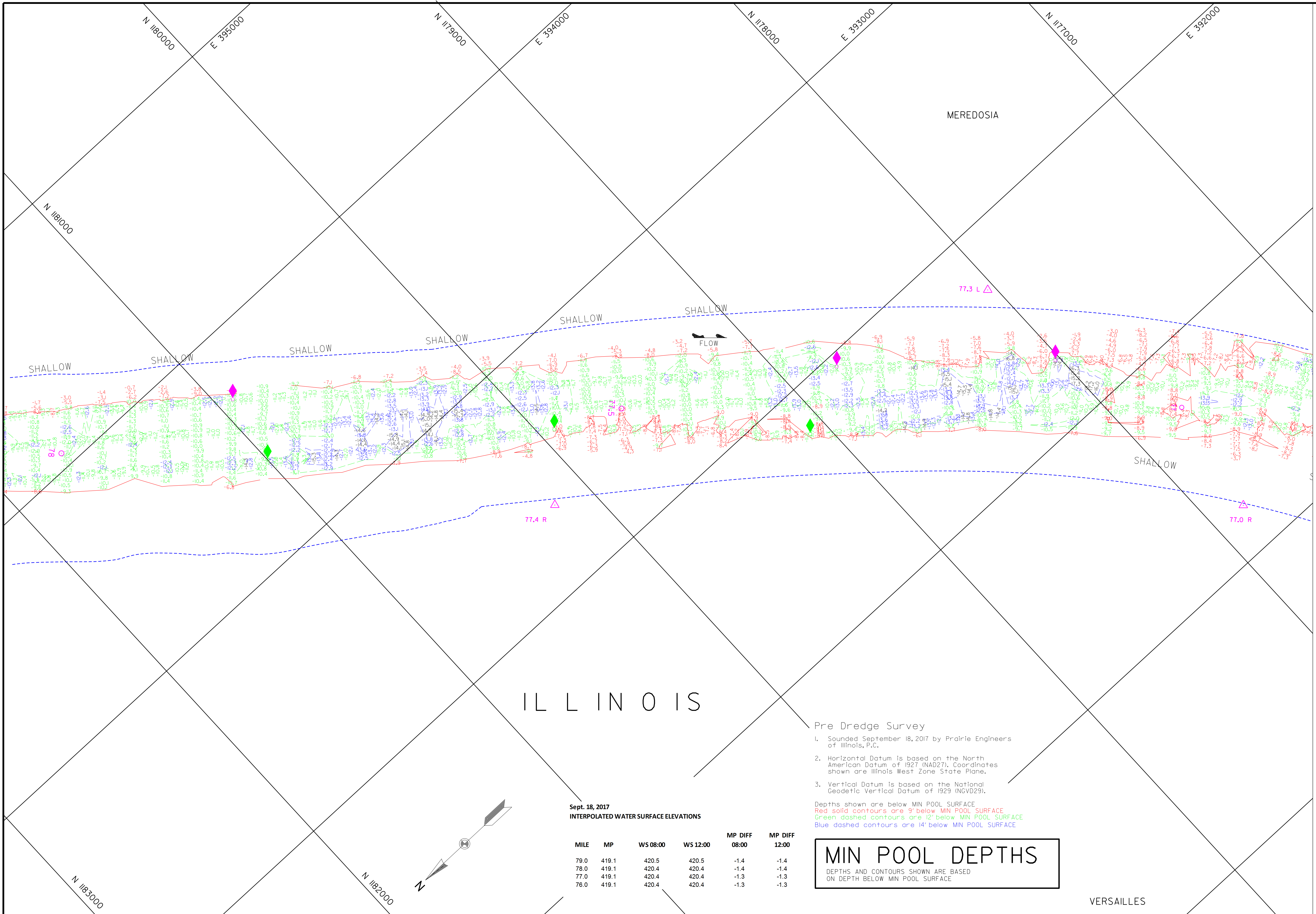


PLATE NUMBER

3



ILLINOIS

- Pre Dredge Survey
- Sounded September 18, 2017 by Prairie Engineers of Illinois, P.C.
 - Horizontal Datum is based on the North American Datum of 1927 (NAD27). Coordinates shown are Illinois West Zone State Plane.
 - Vertical Datum is based on the National Geodetic Vertical Datum of 1929 (NGVD29).

Sept. 18, 2017
INTERPOLATED WATER SURFACE ELEVATIONS

MILE	MP	WS 08:00	WS 12:00	MP DIFF 08:00	MP DIFF 12:00
79.0	419.1	420.5	420.5	-1.4	-1.4
78.0	419.1	420.4	420.4	-1.4	-1.4
77.0	419.1	420.4	420.4	-1.3	-1.3
76.0	419.1	420.4	420.4	-1.3	-1.3

MIN POOL DEPTHS
DEPTHS AND CONTOURS SHOWN ARE BASED ON DEPTH BELOW MIN POOL SURFACE

VERSAILLES



ZERO N.G.V.D.	WATER SURFACE	LADGE LOCK (L)	MEREDOSIA
48.0	48.5		48.0
70.8	80.3		70.8
48.0	49.1		48.0
420.2 (08/00)	420.5 (08/00)		420.2 (08/00)
420.5 (08/00)	420.5 (08/00)		420.5 (08/00)

Survey Date: September 18, 2017
 SUBMITTED:
 Chief, Engr. Data Mgmt. Sect.
 File Name: 076187-mp-nsf.dgn
 Plot Date: 9/18/2017
 Plot Scale: 1" = 200'

Supervised by:
 PRAIRIE ENGINEERS
 Drawn by: PCE by:
 BUB
 Reviewed by:
 APPROVED:
 Chief, Geospatial Branch

U.S. ARMY ENGINEER DIVISION
 CORPS OF ENGINEERS
 ST. LOUIS, MISSOURI
 ILLINOIS RIVER
 PRE DREDGE SURVEY
 RIVER MILES 078.2 - 076.0

60 0 60 METERS
 200 0 200 FEET
 THE INFORMATION DEPICTED ON THIS MAP REPRESENTS THE RESULTS OF
 A SURVEY CONDUCTED UNDER THE GENERAL CONDITIONS EXISTING AT THAT TIME

PLATE NUMBER
 4

