



**US ARMY CORPS
OF ENGINEERS**
ST. LOUIS
DISTRICT

Navigation Notice

River:	Date:
UPPER MISSISSIPPI RIVER	01 Aug 2013

Notice No:	Effective Period:
PN 13-07	8/1/2013 – Indefinitely

In Reply Refer to:
CEMVS-OD-N

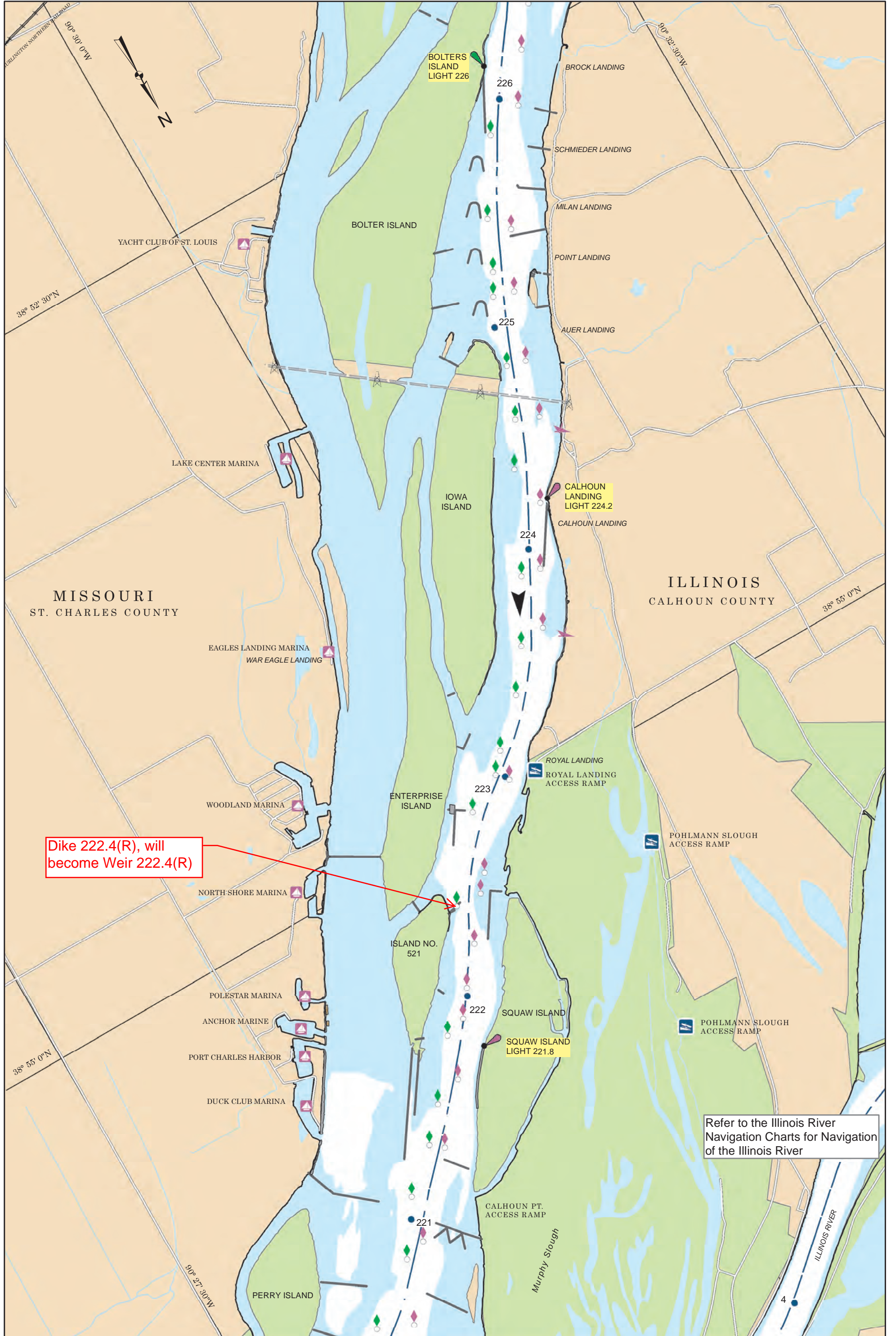
SPECIAL NOTICE TO NAVIGATION INTERESTS

Dike 222.4 (R)

1. All navigation interests are advised that degrading work has been completed on the dikes at 222.4(R), located at the head of Island 521 in Mel Price Pool. These structures have been degraded to allow additional width and depth for the navigation channel. As a result of degrading operations, 15-ft of depth exists at minimum pool over these structures.
2. USACE electronic charts will be updated to show these structures as weirs.
3. For reference, attached is the current navigation chart showing the location of the structures at 222.4 (R) and a detailed confirmation survey. The detailed confirmation survey shows the top elevation of Dike 22.4 (R) to be below elevation 403, or 15-ft below the minimum pool elevation of 418.

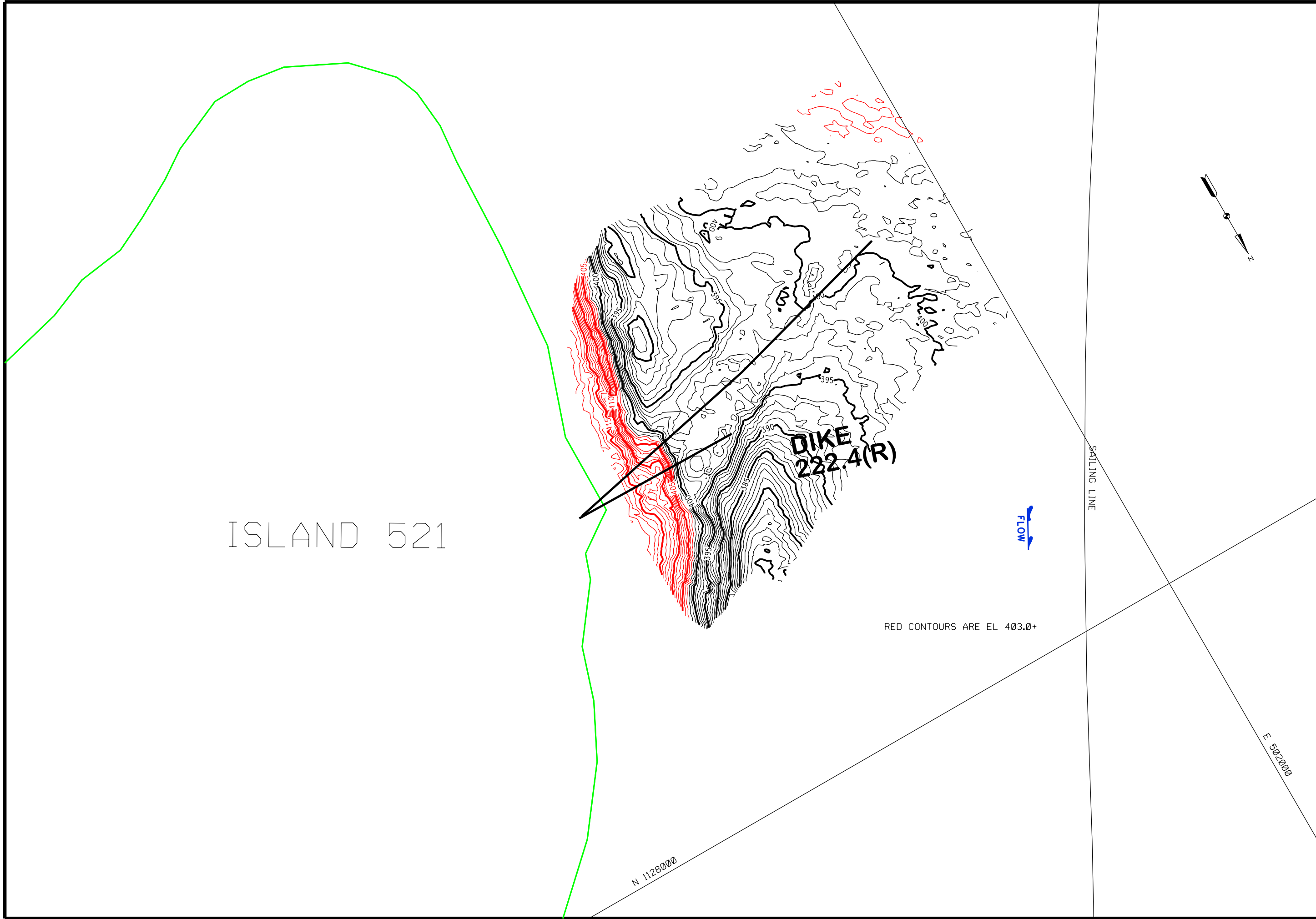
FOR THE DISTRICT ENGINEER:

Andrew C. Schimpf, P.E.
Rivers Project Manager



Dike 222.4(R), will become Weir 222.4(R)

Refer to the Illinois River Navigation Charts for Navigation of the Illinois River



ISLAND 521

DIKE
222.4(R)

SAILING LINE

FLOW

RED CONTOURS ARE EL 403.0+

N 1128000

E 502000



US Army Corps
of Engineers
St. Louis District

ZERO N.C.V.D. MILE	WATER SURFACE	L & D 24 LOWER	ST. LOUIS
L.W.R.P.	X	4341	379.94
25 APR 2013	X	4341	376.4
X	X	43.21	X
X	X	X	X
X	X	X	X

ELEVATIONS ARE REFERRED TO M.S.L. - CONTOURS ARE BELOW 1000.00 LOW WATER REFERENCE PLANE (L.W.R.P.) UNLESS STATED

U.S. ARMY ENGINEER DIVISION CORPS OF ENGINEERS ST. LOUIS, MISSOURI	Survey Date: APRIL 25, 2013
UPPER MISSISSIPPI RIVER BASIN HYDROGRAPHIC SURVEY	Drawn by: M/V SIMPSON II VICTOR BERHMANN
	Reviewed by: PAUL CLOUSE
	Submitted: PAUL CLOUSE Chief, Engr. Data Mngt. Sect.
	Approved: KEITH L. SHORT Chief, Geospatial Branch
	File Name: S:\HYDRO\SURVEY\DIKES\DIKESURV152013\DWG\22240251.DWG
	Plot Date: APRIL 29, 2013

40 0 40 80 FEET
THE INFORMATION DEPICTED ON THIS MAP REPRESENTS THE RESULTS OF
A SURVEY CONDUCTED UNDER THE SUPERVISION OF A REGISTERED
PROFESSIONAL ENGINEER AND IS NOT TO BE USED FOR ANY OTHER
PURPOSE WITHOUT THE WRITTEN CONSENT OF THE ENGINEER.

MULTI BEAM ECHOSOUNDER
5 FT GRID
DIKE SURVEY 222.4(R)

PLATE
NUMBER
X