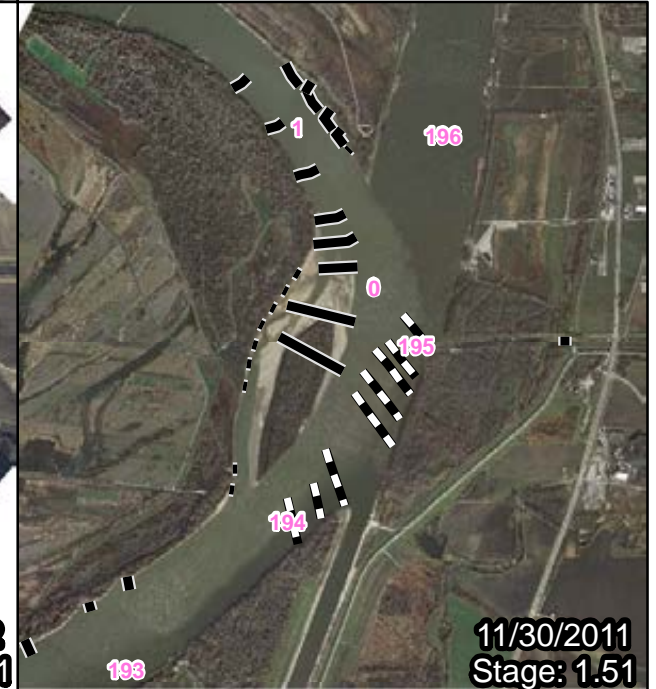
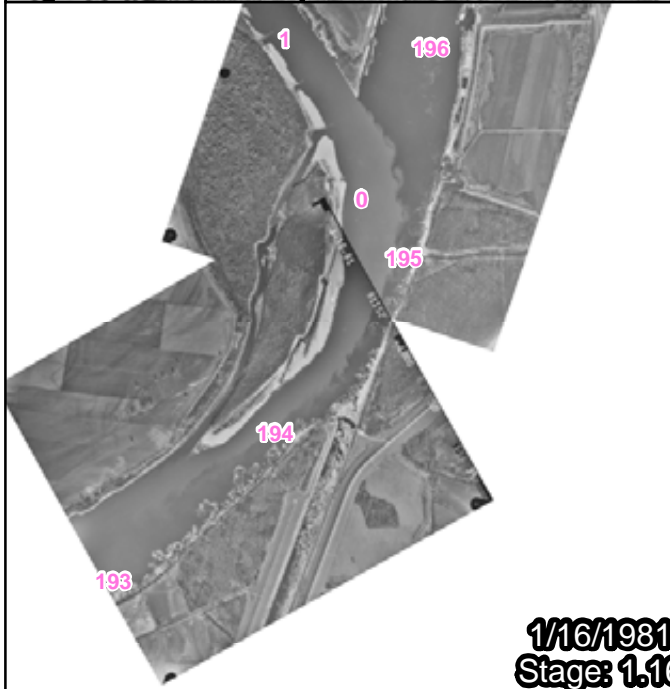




Photo missing from dataset.



**US Army Corps
of Engineers**

RM 195 R Duck Island

1:55,000

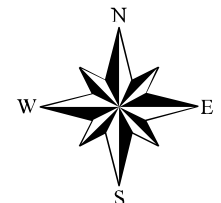
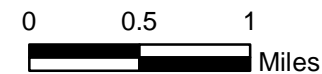
Distance to gage: 6 miles

Created by: Erin Marks Guntren
Date Created: 09August2012

Filepath: \\mvs-netapp2\gis\GIS\MVD\LMR_Sec_Channel_2000\MMR_Side_Channel_Study\maps

DISCLAIMER - While the United States Army Corps of Engineers, (hereinafter referred to USACE) has made a reasonable effort to insure the accuracy of the maps and associated data, its should be explicitly noted that USACE makes no warranty, representation or guaranty, either express or implied, as to the content, sequence, accuracy, timeliness or completeness of any of the data provided herein. The USACE, its officers, agents, employees, or servants shall assume no liability of any nature for any errors, omissions, or inaccuracies in the information provided regardless of how caused. The USACE, its officers, agents, employees or servants

shall assume no liability for any decisions made or actions taken or not taken by the user of the maps and associated data in reliance upon any information or data furnished here. By using these maps and associated data the user does so entirely at their own risk and explicitly acknowledges that he/she is aware of and agrees to be bound by this disclaimer and agrees not to present any claim or demand of any nature against the USACE, its officers, agents, employees or servants in any forum whatsoever for any damages of any nature whatsoever that may result from or may be caused in any way by the use of the maps and associated data.



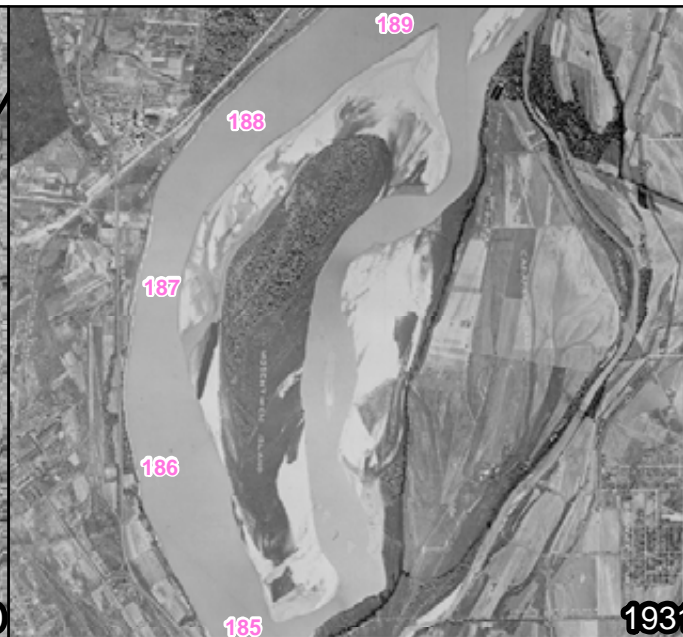
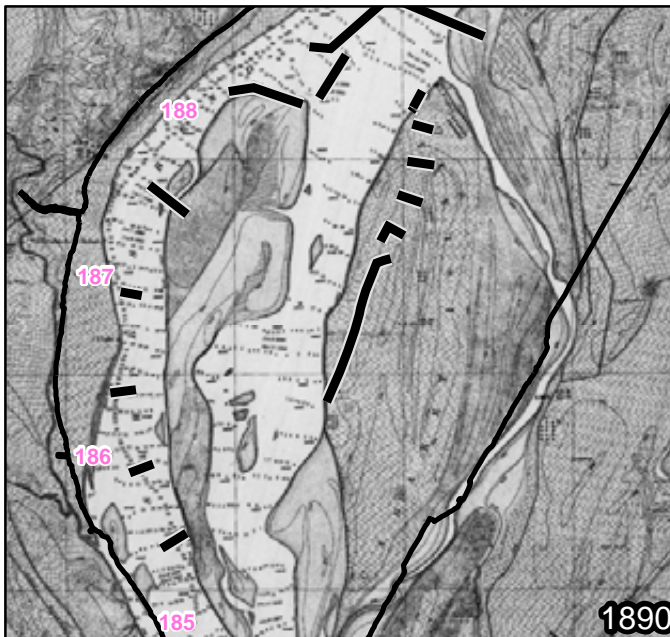


Photo missing from dataset.

Photo missing from dataset.



**US Army Corps
of Engineers®**

RM 188 L Mosenstein

1:65,000

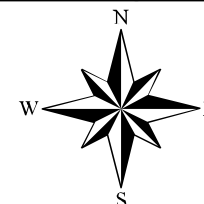
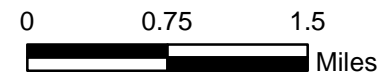
Distance to gage: 10 miles

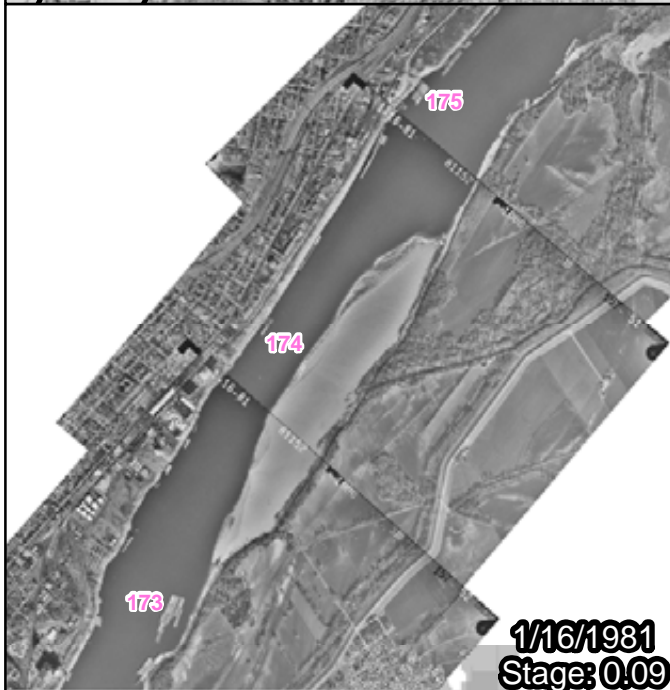
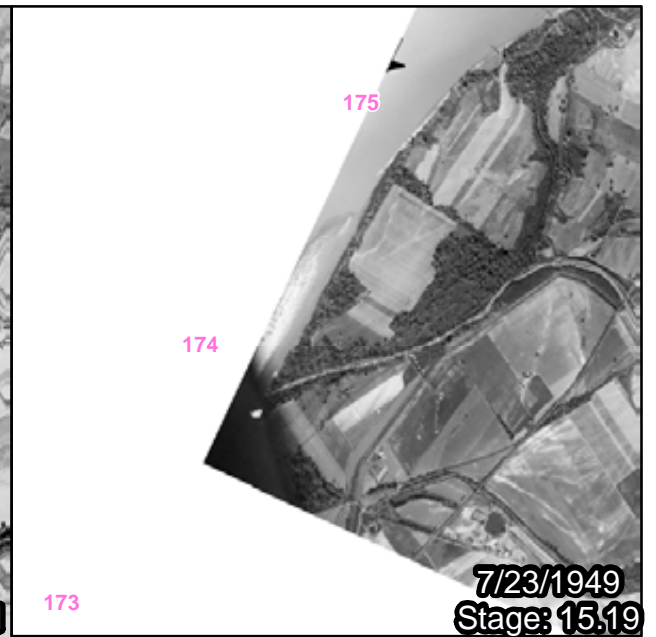
Created by: Erin Marks Guntren
Date Created: 09August2012

Filepath: \\mvs-netapp2\gis\GIS\WVD\LMR_Sec_Channel_2000\MMR_Side_Channel_Study\maps

DISCLAIMER - While the United States Army Corps of Engineers, (hereinafter referred to as USACE) has made a reasonable effort to insure the accuracy of the maps and associated data, it should be explicitly noted that USACE makes no warranty, representation or guaranty, either express or implied, as to the content, sequence, accuracy, timeliness or completeness of any of the data provided herein. The USACE, its officers, agents, employees, or servants shall assume no liability of any nature for any errors, omissions, or inaccuracies in the information provided regardless of how caused. The USACE, its officers, agents, employees or servants

shall assume no liability for any decisions made or actions taken or not taken by the user of the maps and associated data in reliance upon any information or data furnished here. By using these maps and associated data the user does so entirely at their own risk and explicitly acknowledges that he/she is aware of and agrees to be bound by this disclaimer and agrees not to present any claim or demand of any nature against the USACE, its officers, agents, employees or servants in any forum whatsoever for any damages of any nature whatsoever that may result from or may be caused in any way by the use of the maps and associated data.





**US Army Corps
of Engineers**

RM 174 L Arsenal

1:45,000

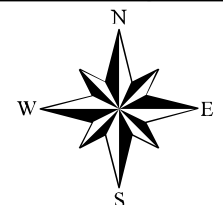
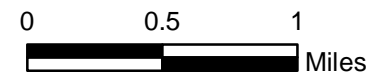
Distance to gage: 8 miles

Created by: Erin Marks Guntren
Date Created: 09August2012

Filepath: \\mvs-netapp2\gis\Gis\MVD\LMR_Sec_Channel_2000\MMR_Side_Channel_Study\maps

DISCLAIMER - While the United States Army Corps of Engineers, (hereinafter referred to USACE) has made a reasonable effort to insure the accuracy of the maps and associated data, it should be explicitly noted that USACE makes no warranty, representation or guaranty, either express or implied, as to the content, sequence, accuracy, timeliness or completeness of any of the data provided herein. The USACE, its officers, agents, employees, or servants shall assume no liability of any nature for any errors, omissions, or inaccuracies in the information provided regardless of how caused. The USACE, its officers, agents, employees or servants

shall assume no liability for any decisions made or actions taken or not taken by the user of the maps and associated data in reliance upon any information or data furnished here. By using these maps and associated data the user does so entirely at their own risk and explicitly acknowledges that he/she is aware of and agrees to be bound by this disclaimer and agrees not to present any claim or demand of any nature against the USACE, its officers, agents, employees or servants in any forum whatsoever for any damages of any nature whatsoever that may result from or may be caused in any way by the use of the maps and associated data.





1890



1931



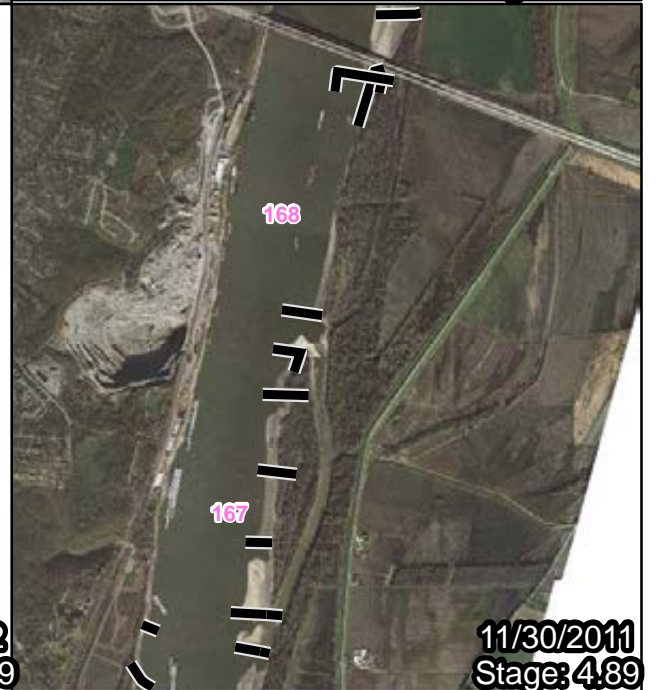
7/23/1949
Stage: 15.19



1/16/1981
Stage: 0.09



1/15/2002
Stage: 3.89



11/30/2011
Stage: 4.89



**US Army Corps
of Engineers**

RM 167 L Jefferson Barracks

1:45,000

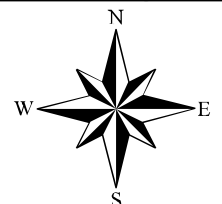
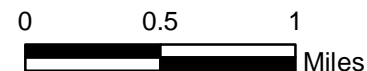
Distance to gage: 3 miles

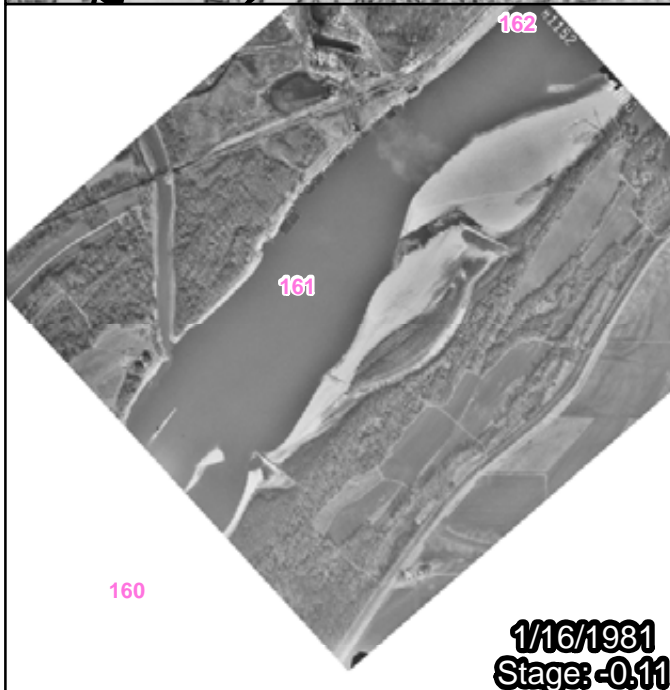
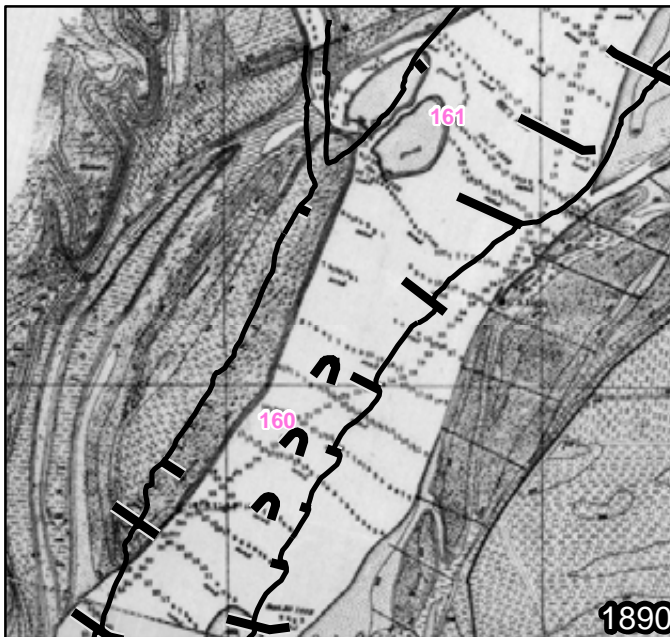
Created by: Erin Marks Guntren
Date Created: 09August2012

Filepath: \\mvs-netapp2\gis\GIS\MVD\LMR_Sec_Channel_2000\MMR_Side_Channel_Study\maps

DISCLAIMER - While the United States Army Corps of Engineers, (hereinafter referred to as USACE) has made a reasonable effort to insure the accuracy of the maps and associated data, its should be explicitly noted that USACE makes no warranty, representation or guaranty, either express or implied, as to the content, sequence, accuracy, timeliness or completeness of any of the data provided herein. The USACE, its officers, agents, employees, or servants shall assume no liability of any nature for any errors, omissions, or inaccuracies in the information provided regardless of how caused. The USACE, its officers, agents, employees or servants

shall assume no liability for any decisions made or actions taken or not taken by the user of the maps and associated data in reliance upon any information or data furnished here. By using these maps and associated data the user does so entirely at their own risk and explicitly acknowledges that he/she is aware of and agrees to be bound by this disclaimer and agrees not to present any claim or demand of any nature against the USACE, its officers, agents, employees or servants in any forum whatsoever for any damages of any nature whatsoever that may result from or may be caused in any way by the use of the maps and associated data.





**US Army Corps
of Engineers**

RM 161 L Atwood

1:35,000

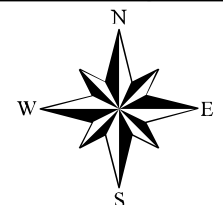
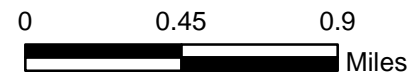
Distance to gage: 3 miles

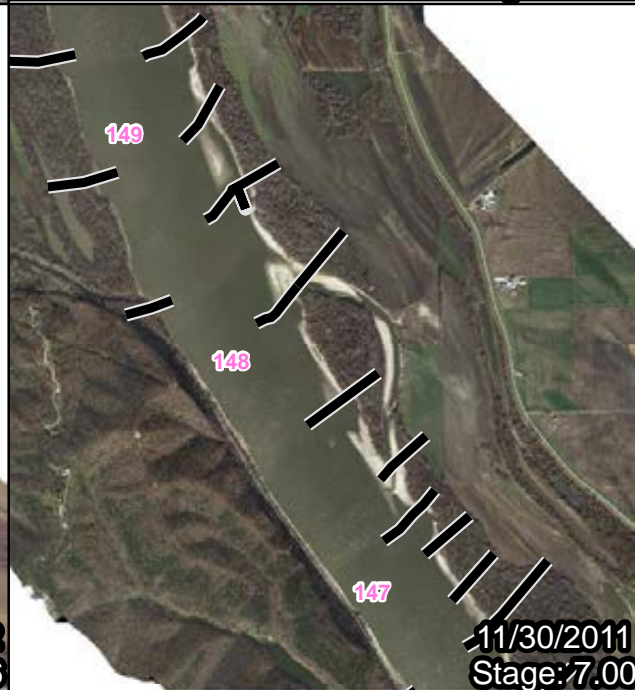
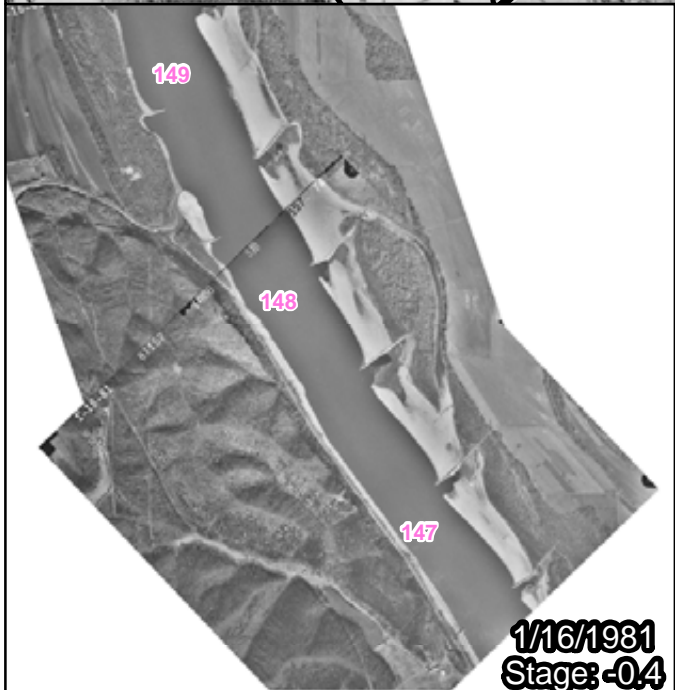
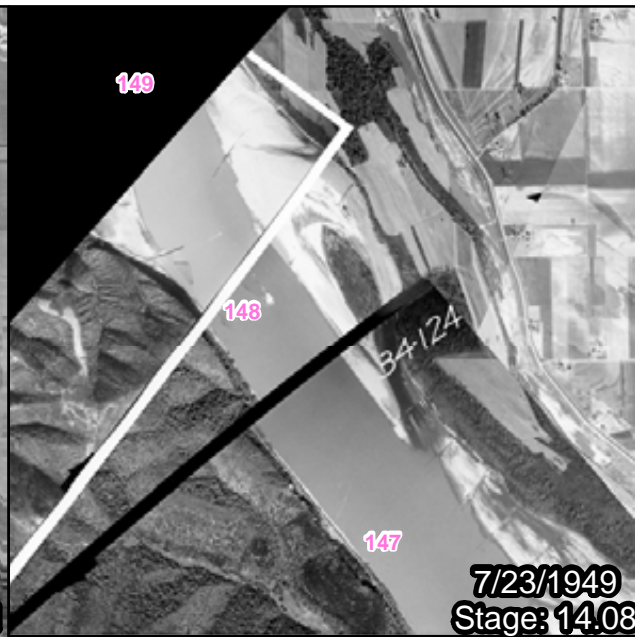
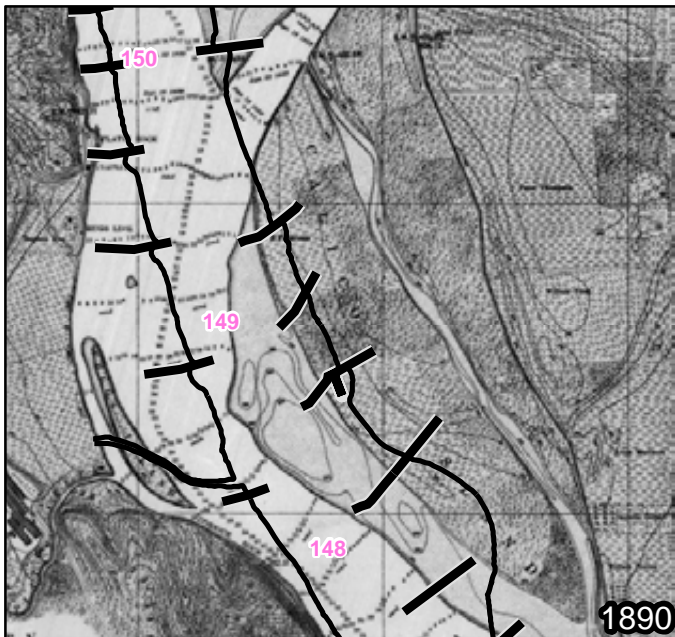
Created by: Erin Marks Guntren
Date Created: 08August2012

Filepath: \\mvs-netapp2\gis\Gis\MVD\LMR_Sec_Channel_2000\MMR_Side_Channel_Study\maps

DISCLAIMER - While the United States Army Corps of Engineers, (hereinafter referred to as USACE) has made a reasonable effort to insure the accuracy of the maps and associated data, its should be explicitly noted that USACE makes no warranty, representation or guaranty, either express or implied, as to the content, sequence, accuracy, timeliness or completeness of any of the data provided herein. The USACE, its officers, agents, employees, or servants shall assume no liability of any nature for any errors, omissions, or inaccuracies in the information provided regardless of how caused. The USACE, its officers, agents, employees or servants

shall assume no liability for any decisions made or actions taken or not taken by the user of the maps and associated data in reliance upon any information or data furnished here. By using these maps and associated data the user does so entirely at their own risk and explicitly acknowledges that he/she is aware of and agrees to be bound by this disclaimer and agrees not to present any claim or demand of any nature against the USACE, its officers, agents, employees or servants in any forum whatsoever for any damages of any nature whatsoever that may result from or may be caused in any way by the use of the maps and associated data.





**US Army Corps
of Engineers®**

RM 148 L Calico

1:45,000

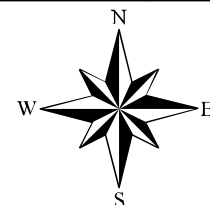
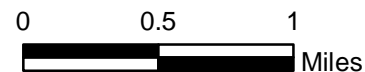
Distance to gage: 3 miles

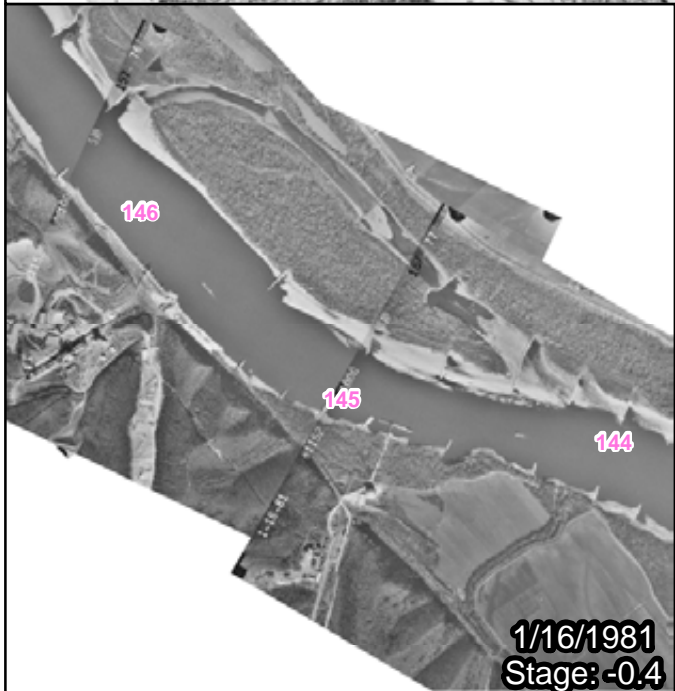
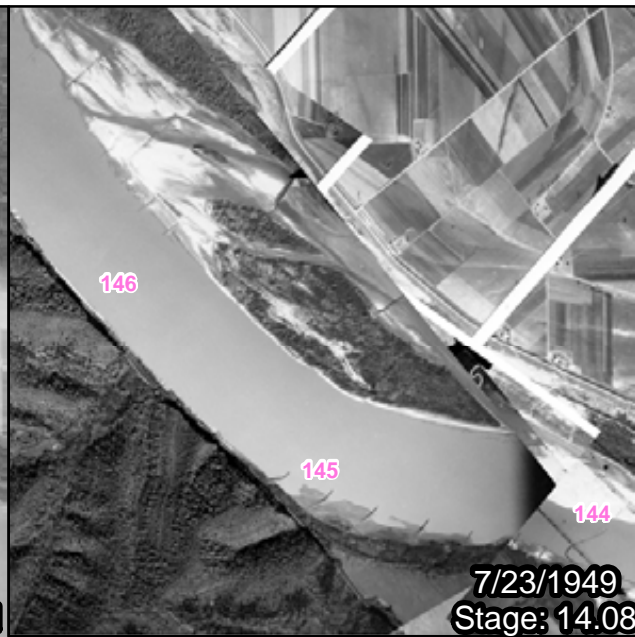
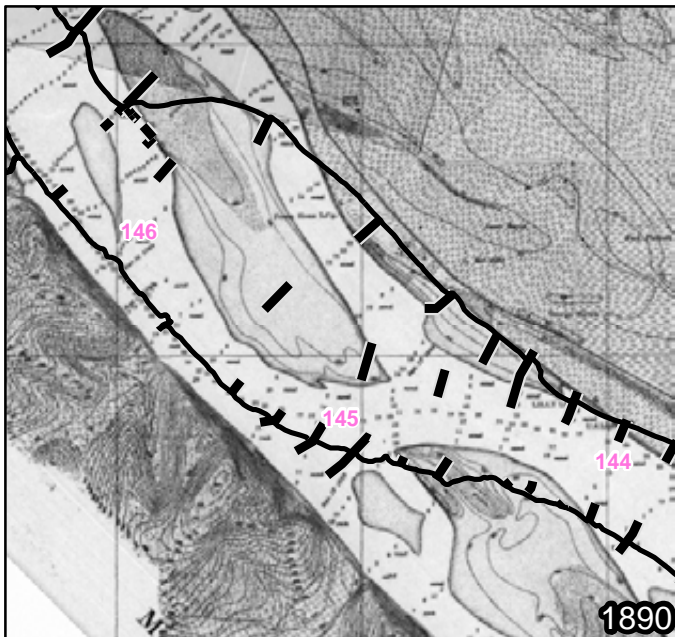
Created by: Erin Marks Guntren
Date Created: 08August2012

Filepath: \\mvs-netapp2\gis\Gis\MVD\LMR_Sec_Channel_2000\MMR_Side_Channel_Study\maps

DISCLAIMER - While the United States Army Corps of Engineers, (hereinafter referred to as USACE) has made a reasonable effort to insure the accuracy of the maps and associated data, its should be explicitly noted that USACE makes no warranty, representation or guaranty, either express or implied, as to the content, sequence, accuracy, timeliness or completeness of any of the data provided herein. The USACE, its officers, agents, employees, or servants shall assume no liability of any nature for any errors, omissions, or inaccuracies in the information provided regardless of how caused. The USACE, its officers, agents, employees or servants

shall assume no liability for any decisions made or actions taken or not taken by the user of the maps and associated data in reliance upon any information or data furnished here. By using these maps and associated data the user does so entirely at their own risk and explicitly acknowledges that he/she is aware of and agrees to be bound by this disclaimer and agrees not to present any claim or demand of any nature against the USACE, its officers, agents, employees or servants in any forum whatsoever for any damages of any nature whatsoever that may result from or may be caused in any way by the use of the maps and associated data.





**US Army Corps
of Engineers®**

RM 145 L Osborne

1:45,000

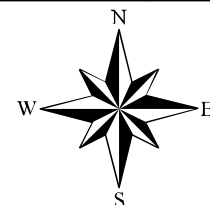
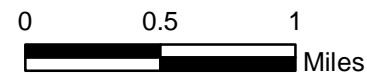
Distance to gage: 0 miles

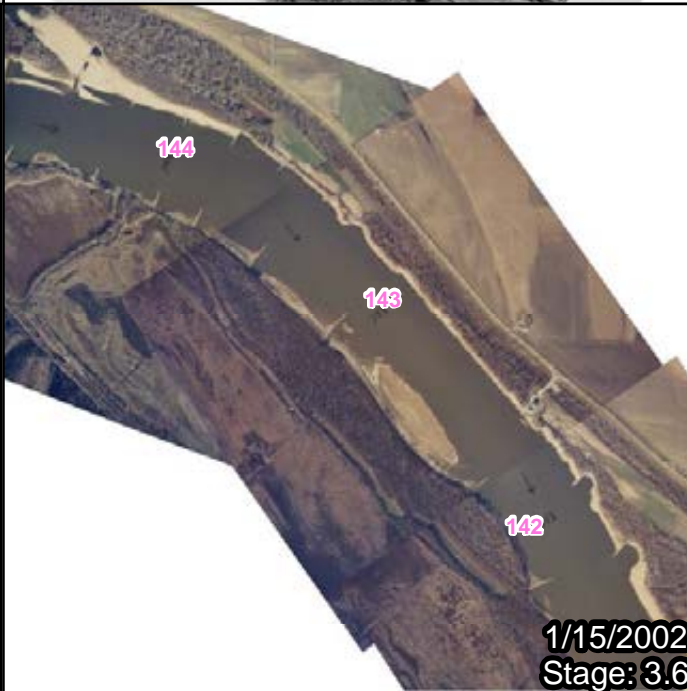
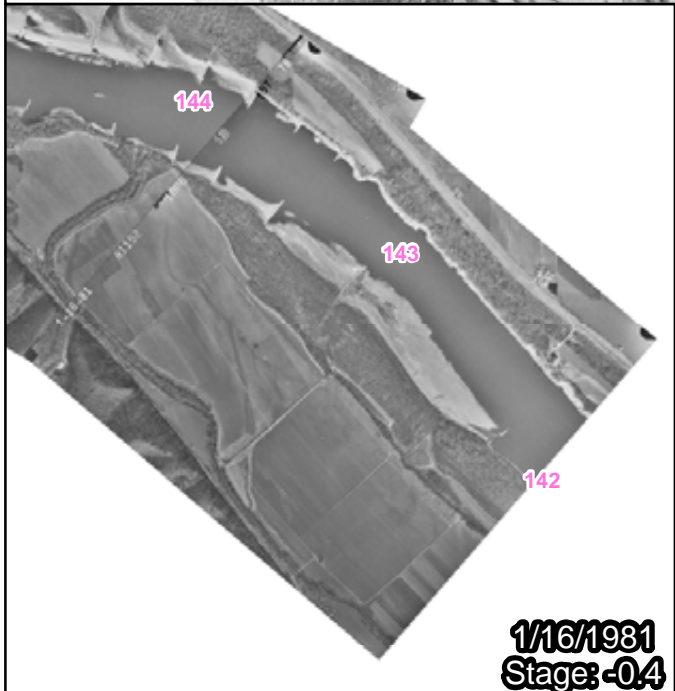
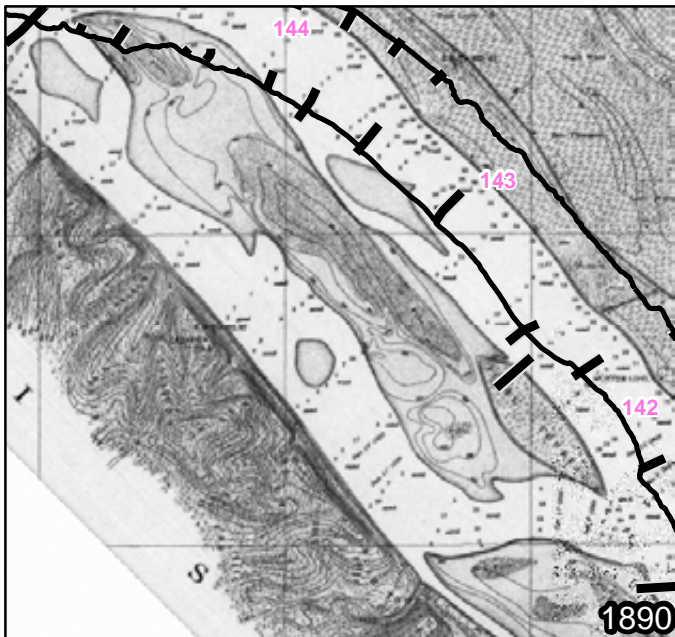
Created by: Erin Marks Guntren
Date Created: 08August2012

Filepath: \\mvs-netapp2\gis\Gis\MVD\LMR_Sec_Channel_2000\MMR_Side_Channel_Study\maps

DISCLAIMER - While the United States Army Corps of Engineers, (hereinafter referred to as USACE) has made a reasonable effort to insure the accuracy of the maps and associated data, its should be explicitly noted that USACE makes no warranty, representation or guaranty, either express or implied, as to the content, sequence, accuracy, timeliness or completeness of any of the data provided herein. The USACE, its officers, agents, employees, or servants shall assume no liability of any nature for any errors, omissions, or inaccuracies in the information provided regardless of how caused. The USACE, its officers, agents, employees or servants

shall assume no liability for any decisions made or actions taken or not taken by the user of the maps and associated data in reliance upon any information or data furnished here. By using these maps and associated data the user does so entirely at their own risk and explicitly acknowledges that he/she is aware of and agrees to be bound by this disclaimer and agrees not to present any claim or demand of any nature against the USACE, its officers, agents, employees or servants in any forum whatsoever for any damages of any nature whatsoever that may result from or may be caused in any way by the use of the maps and associated data.





**US Army Corps
of Engineers®**

RM 143 L Harlow

1:45,000

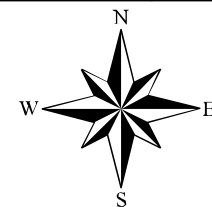
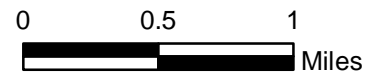
Distance to gage: 2 miles

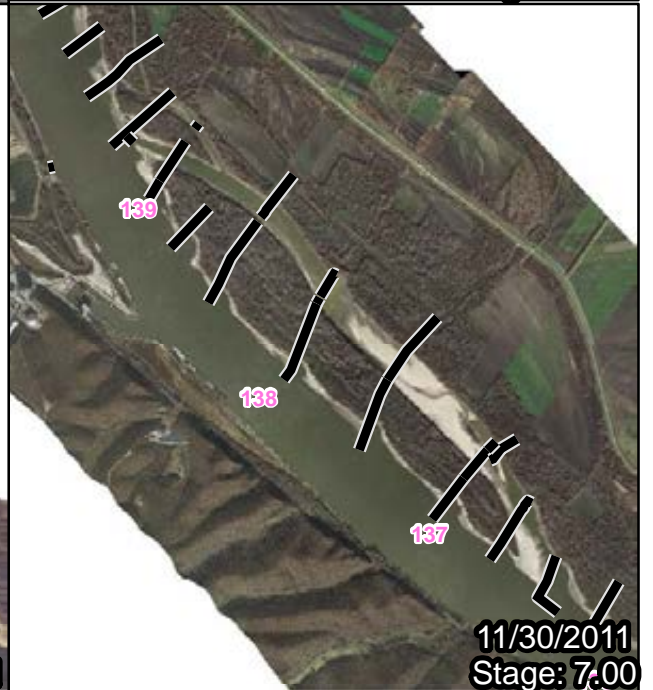
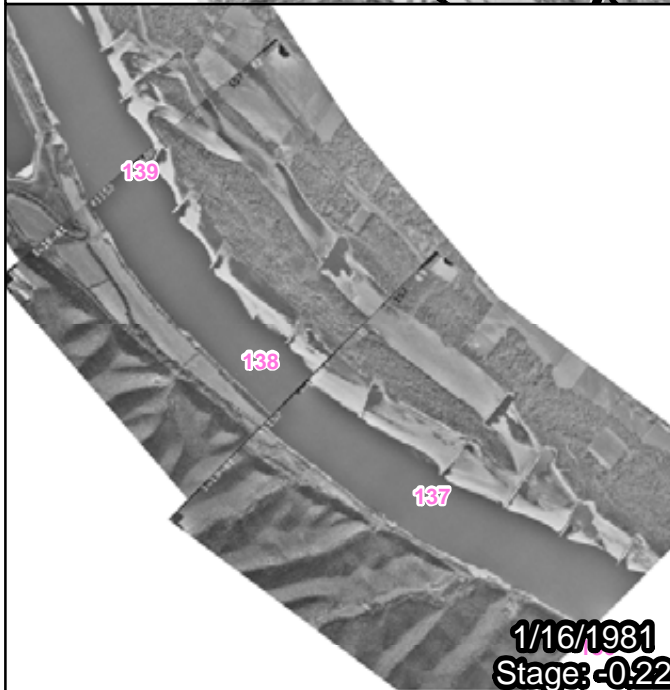
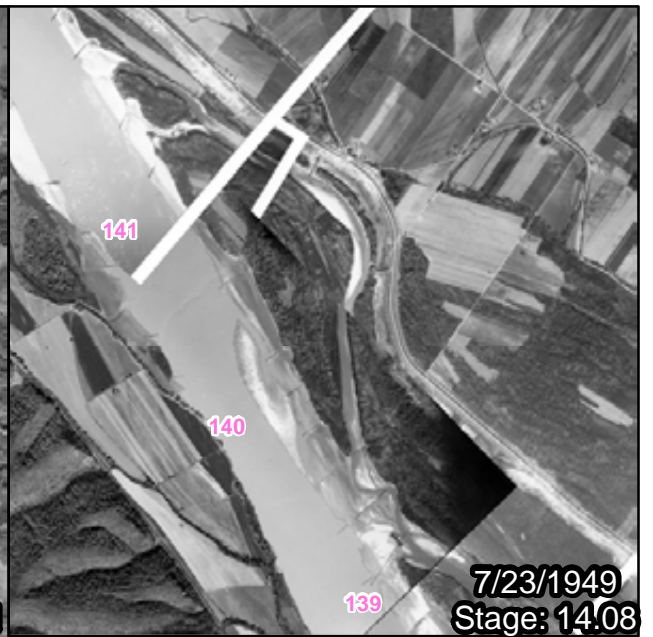
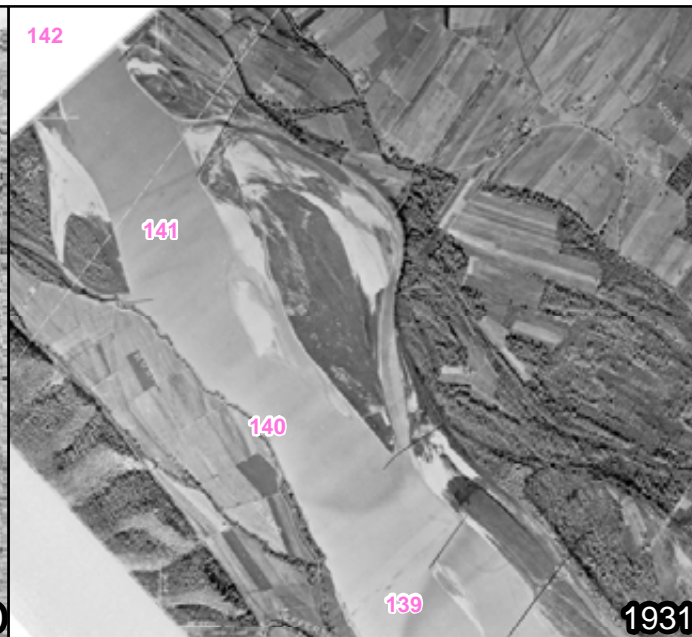
Created by: Erin Marks Guntren
Date Created: 08August2012

Filepath: \\mvs-netapp2\gis\Gis\MVD\LMR_Sec_Channel_2000\MMR_Side_Channel_Study\maps

DISCLAIMER - While the United States Army Corps of Engineers, (hereinafter referred to USACE) has made a reasonable effort to insure the accuracy of the maps and associated data, it should be explicitly noted that USACE makes no warranty, representation or guaranty, either express or implied, as to the content, sequence, accuracy, timeliness or completeness of any of the data provided herein. The USACE, its officers, agents, employees, or servants shall assume no liability of any nature for any errors, omissions, or inaccuracies in the information provided regardless of how caused. The USACE, its officers, agents, employees or servants

shall assume no liability for any decisions made or actions taken or not taken by the user of the maps and associated data in reliance upon any information or data furnished here. By using these maps and associated data the user does so entirely at their own risk and explicitly acknowledges that he/she is aware of and agrees to be bound by this disclaimer and agrees not to present any claim or demand of any nature against the USACE, its officers, agents, employees or servants in any forum whatsoever for any damages of any nature whatsoever that may result from or may be caused in any way by the use of the maps and associated data.





**US Army Corps
of Engineers**

RM 138 L Salt Lake

1:55,000

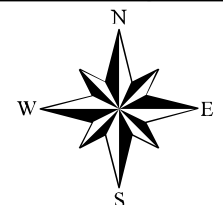
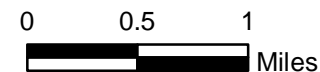
Distance to gage: 2 miles

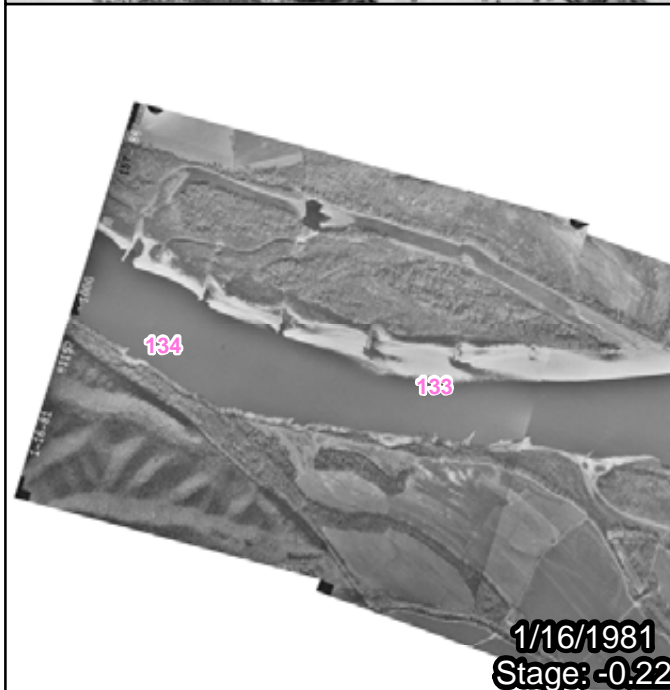
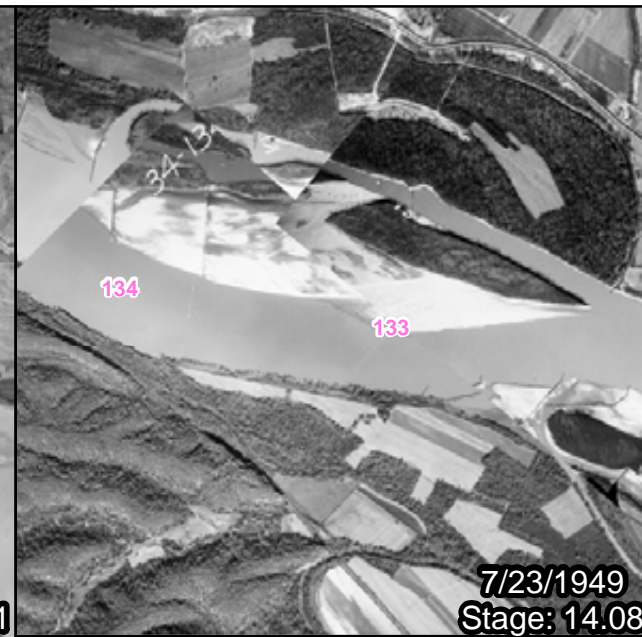
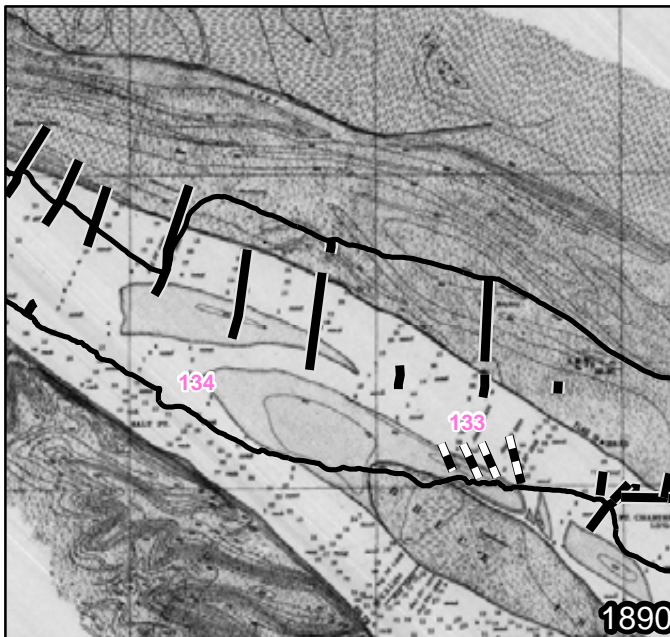
Created by: Erin Marks Guntren
Date Created: 08August2012

Filepath: \\mvs-netapp2\gis\Gis\MVD\LMR_Sec_Channel_2000\MMR_Side_Channel_Study\maps

DISCLAIMER - While the United States Army Corps of Engineers, (hereinafter referred to USACE) has made a reasonable effort to insure the accuracy of the maps and associated data, its should be explicitly noted that USACE makes no warranty, representation or guaranty, either express or implied, as to the content, sequence, accuracy, timeliness or completeness of any of the data provided herein. The USACE, its officers, agents, employees, or servants shall assume no liability of any nature for any errors, omissions, or inaccuracies in the information provided regardless of how caused. The USACE, its officers, agents, employees or servants

shall assume no liability for any decisions made or actions taken or not taken by the user of the maps and associated data in reliance upon any information or data furnished here. By using these maps and associated data the user does so entirely at their own risk and explicitly acknowledges that he/she is aware of and agrees to be bound by this disclaimer and agrees not to present any claim or demand of any nature against the USACE, its officers, agents, employees or servants in any forum whatsoever for any damages of any nature whatsoever that may result from or may be caused in any way by the use of the maps and associated data.





**US Army Corps
of Engineers®**

RM 133 L Fort Chartres

1:45,000

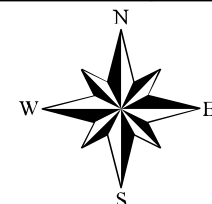
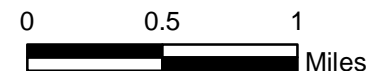
Distance to gage: 3 miles

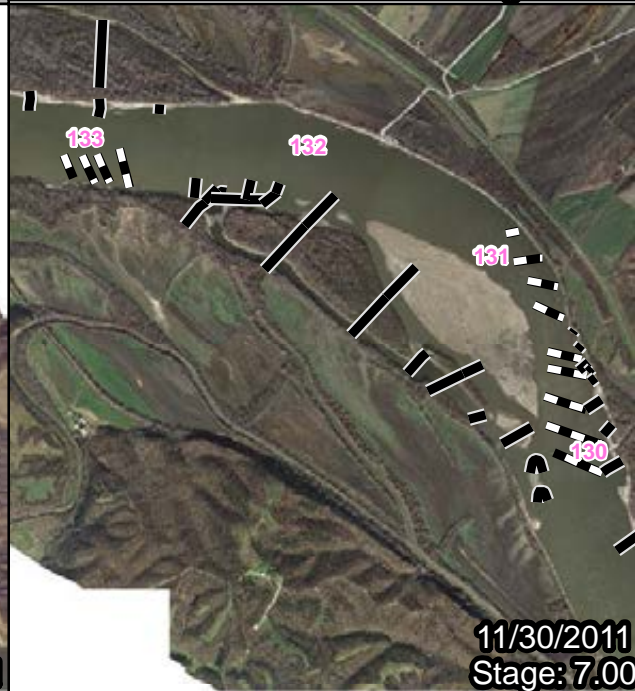
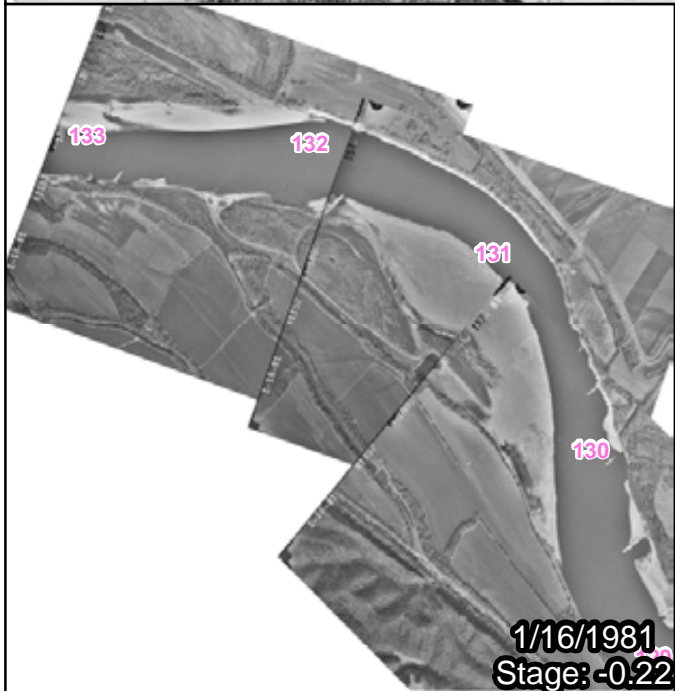
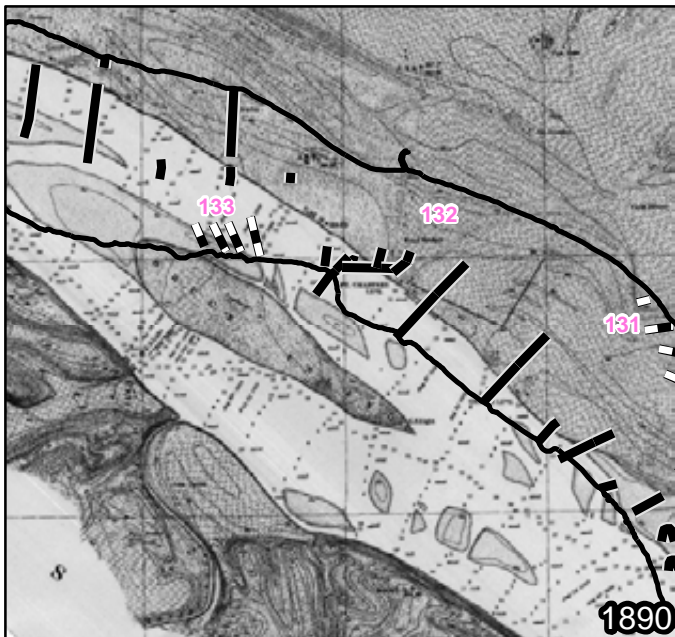
Created by: Erin Marks Guntren
Date Created: 08August2012

Filepath: \\mvs-netapp2\gis\Gis\WVD\LMR_Sec_Channel_2000\MMR_Side_Channel_Study\maps

DISCLAIMER - While the United States Army Corps of Engineers, (hereinafter referred to as USACE) has made a reasonable effort to insure the accuracy of the maps and associated data, it should be explicitly noted that USACE makes no warranty, representation or guaranty, either express or implied, as to the content, sequence, accuracy, timeliness or completeness of any of the data provided herein. The USACE, its officers, agents, employees, or servants shall assume no liability of any nature for any errors, omissions, or inaccuracies in the information provided regardless of how caused. The USACE, its officers, agents, employees or servants

shall assume no liability for any decisions made or actions taken or not taken by the user of the maps and associated data in reliance upon any information or data furnished here. By using these maps and associated data the user does so entirely at their own risk and explicitly acknowledges that he/she is aware of and agrees to be bound by this disclaimer and agrees not to present any claim or demand of any nature against the USACE, its officers, agents, employees or servants in any forum whatsoever for any damages of any nature whatsoever that may result from or may be caused in any way by the use of the maps and associated data.





**US Army Corps
of Engineers®**

RM 131 R Establishment

1:55,000

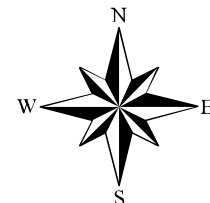
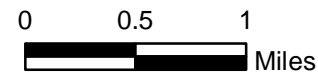
Distance to gage: 5 miles

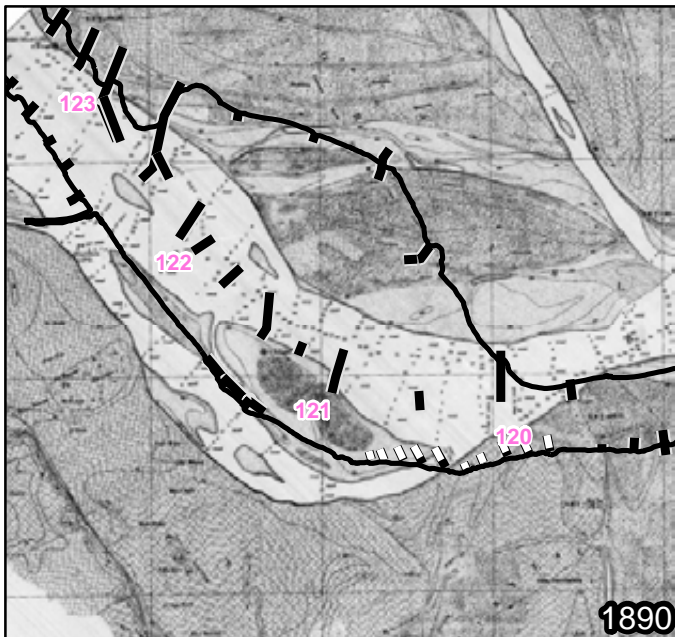
Created by: Erin Marks Guntren
Date Created: 08August2012

Filepath: \\mvs-netapp2\gis\Gis\MVD\LMR_Sec_Channel_2000\MMR_Side_Channel_Study\maps

DISCLAIMER - While the United States Army Corps of Engineers, (hereinafter referred to as USACE) has made a reasonable effort to insure the accuracy of the maps and associated data, its should be explicitly noted that USACE makes no warranty, representation or guaranty, either express or implied, as to the content, sequence, accuracy, timeliness or completeness of any of the data provided herein. The USACE, its officers, agents, employees, or servants shall assume no liability of any nature for any errors, omissions, or inaccuracies in the information provided regardless of how caused. The USACE, its officers, agents, employees or servants

shall assume no liability for any decisions made or actions taken or not taken by the user of the maps and associated data in reliance upon any information or data furnished here. By using these maps and associated data the user does so entirely at their own risk and explicitly acknowledges that he/she is aware of and agrees to be bound by this disclaimer and agrees not to present any claim or demand of any nature against the USACE, its officers, agents, employees or servants in any forum whatsoever for any damages of any nature whatsoever that may result from or may be caused in any way by the use of the maps and associated data.

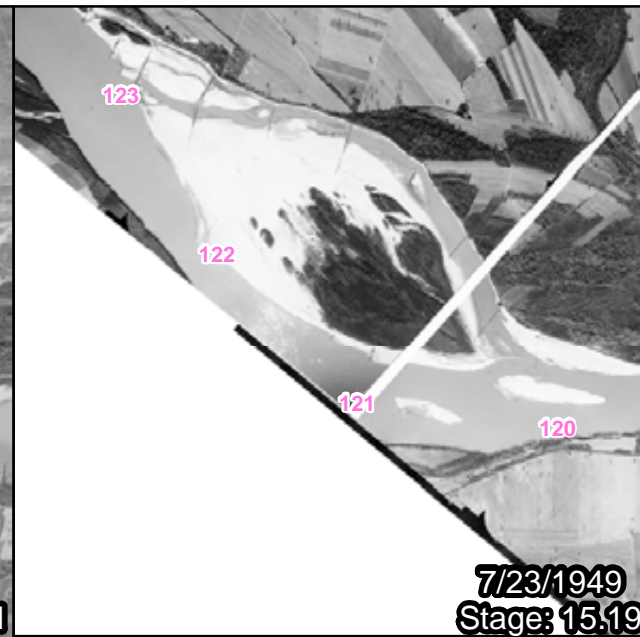




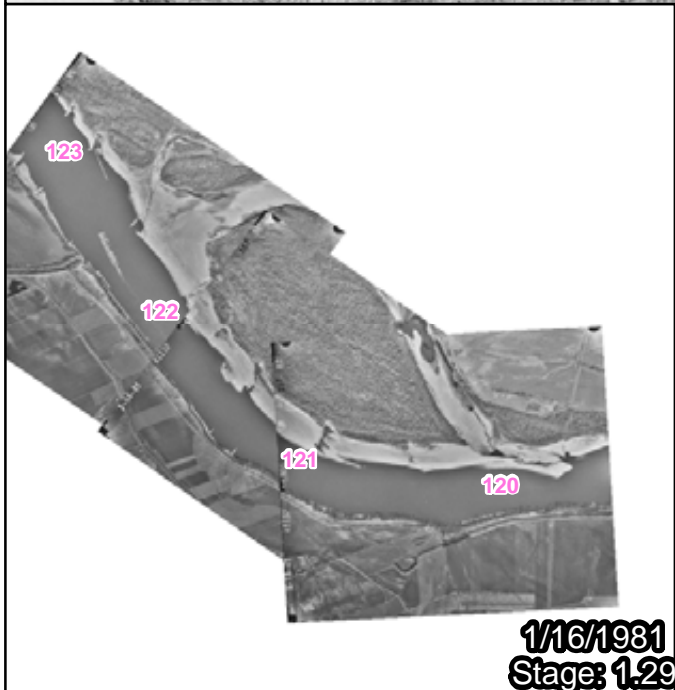
1890



1931



7/23/1949
Stage: 15.19



1/16/1981
Stage: 1.29



1/15/2002
Stage: 5.79



11/30/2011
Stage: 8.59



**US Army Corps
of Engineers®**

RM 212 L Moro

1:65,000

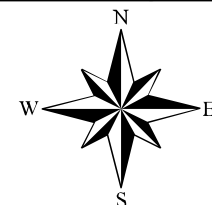
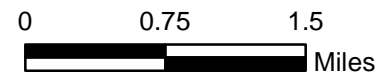
Distance to gage: 4 miles

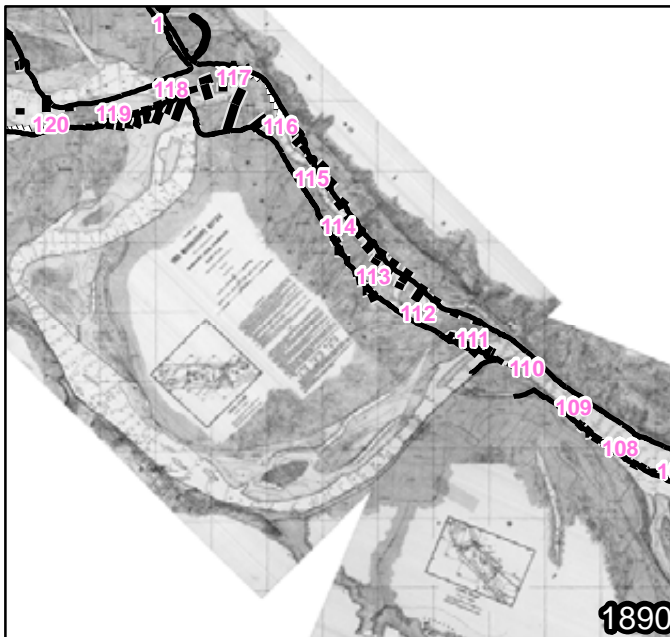
Created by: Erin Marks Guntren
Date Created: 08August2012

Filepath: \\mvs-netapp2\gis\Gis\MVD\LMR_Sec_Channel_2000\MMR_Side_Channel_Study\maps

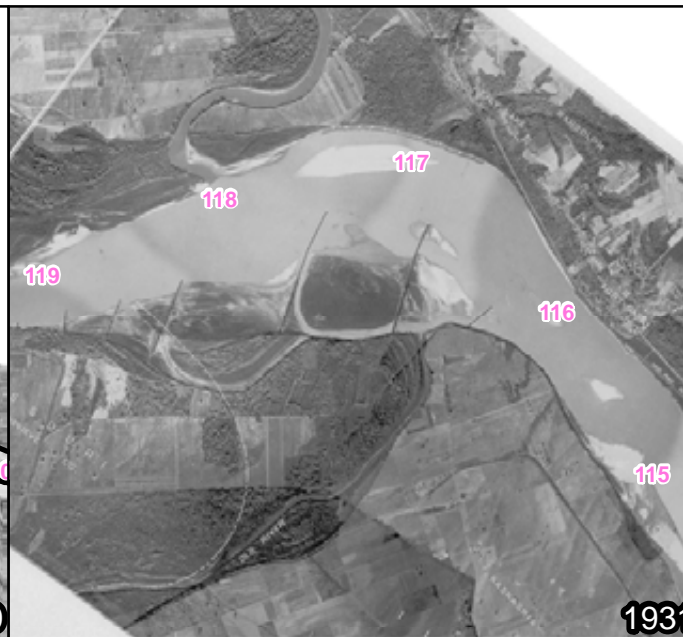
DISCLAIMER - While the United States Army Corps of Engineers, (hereinafter referred to USACE) has made a reasonable effort to insure the accuracy of the maps and associated data, its should be explicitly noted that USACE makes no warranty, representation or guaranty, either express or implied, as to the content, sequence, accuracy, timeliness or completeness of any of the data provided herein. The USACE, its officers, agents, employees, or servants shall assume no liability of any nature for any errors, omissions, or inaccuracies in the information provided regardless of how caused. The USACE, its officers, agents, employees or servants

shall assume no liability for any decisions made or actions taken or not taken by the user of the maps and associated data in reliance upon any information or data furnished here. By using these maps and associated data the user does so entirely at their own risk and explicitly acknowledges that he/she is aware of and agrees to be bound by this disclaimer and agrees not to present any claim or demand of any nature against the USACE, its officers, agents, employees or servants in any forum whatsoever for any damages of any nature whatsoever that may result from or may be caused in any way by the use of the maps and associated data.





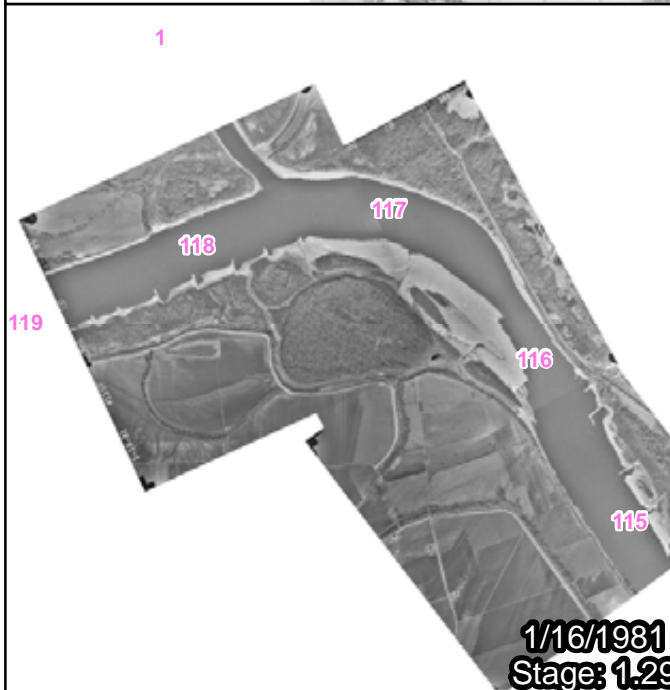
1890



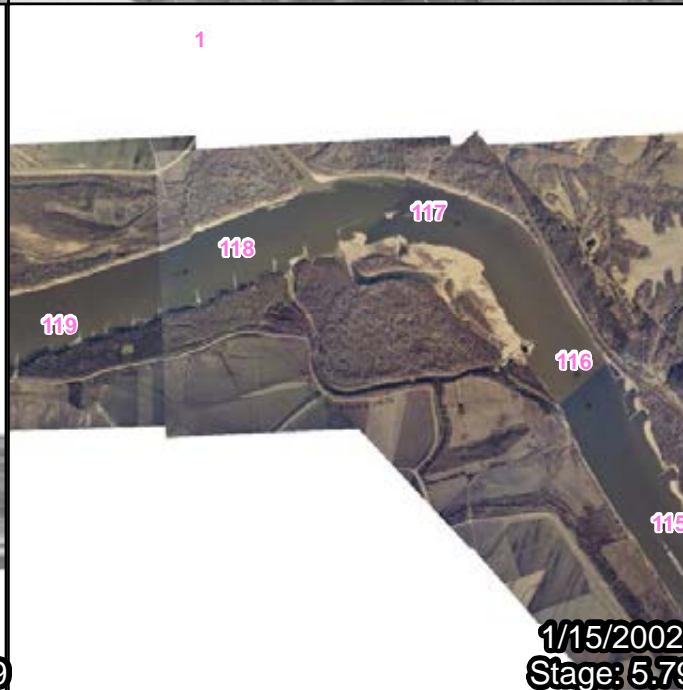
1931



7/23/1949
Stage: 15.19



1/16/1981
Stage: 1.29



1/15/2002
Stage: 5.79



11/30/2011
Stage: 8.59



**US Army Corps
of Engineers**

RM 118 R Kaskaskia

1:65,000

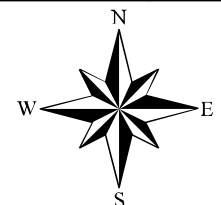
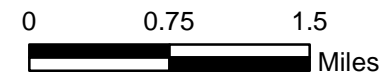
Distance to gage: 7 miles

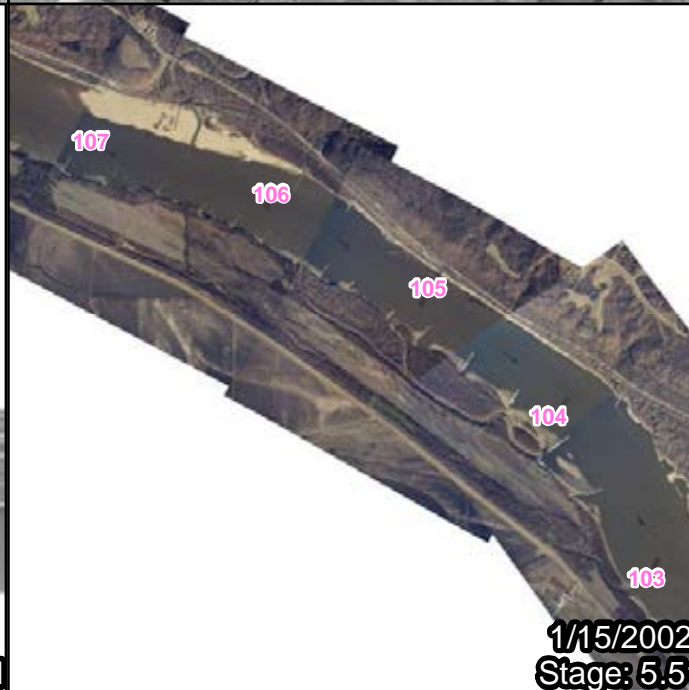
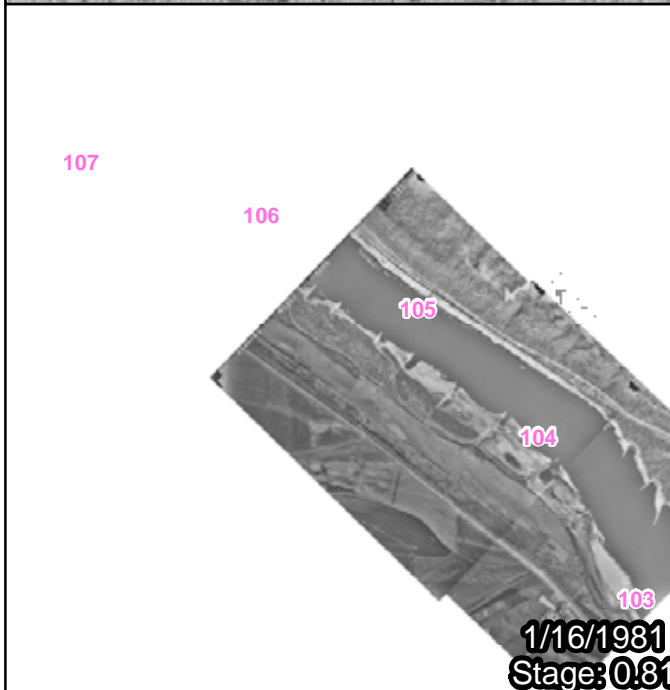
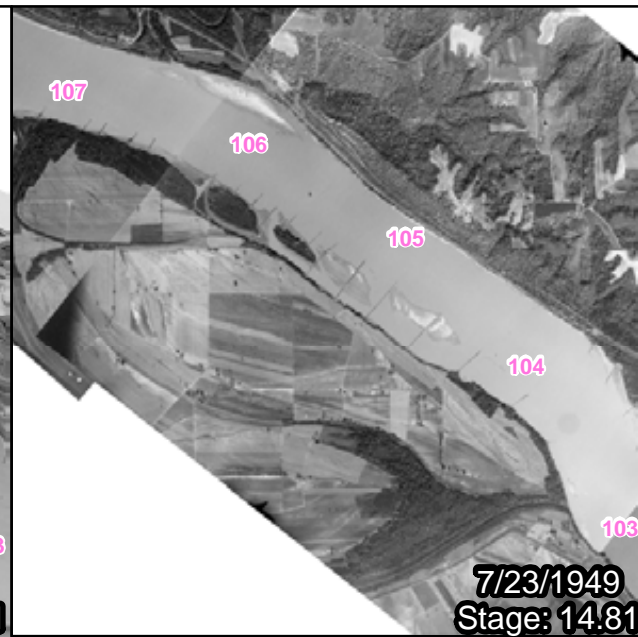
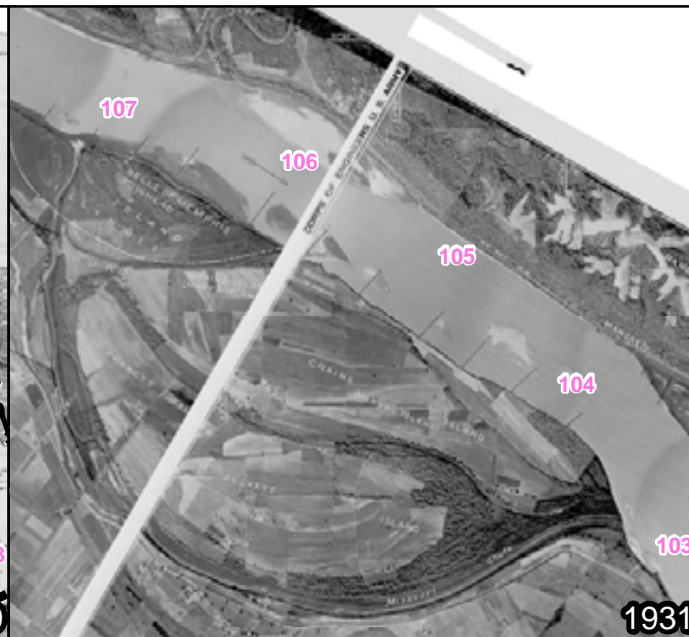
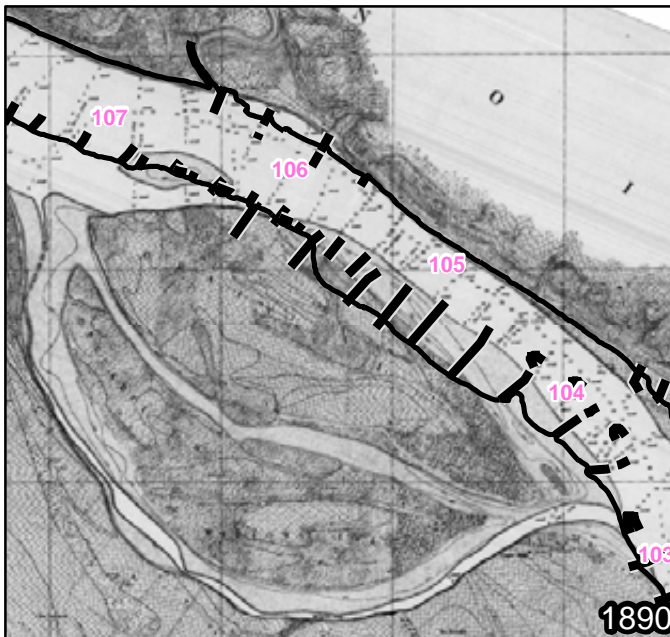
Created by: Erin Marks Guntren
Date Created: 08August2012

Filepath: \\mvs-netapp2\gis\Gis\MVD\LMR_Sec_Channel_2000\MMR_Side_Channel_Study\maps

DISCLAIMER - While the United States Army Corps of Engineers, (hereinafter referred to as USACE) has made a reasonable effort to insure the accuracy of the maps and associated data, it should be explicitly noted that USACE makes no warranty, representation or guaranty, either express or implied, as to the content, sequence, accuracy, timeliness or completeness of any of the data provided herein. The USACE, its officers, agents, employees, or servants shall assume no liability of any nature for any errors, omissions, inaccuracies in the information provided regardless of how caused. The USACE, its officers, agents, employees or servants

shall assume no liability for any decisions made or actions taken or not taken by the user of the maps and associated data in reliance upon any information or data furnished here. By using these maps and associated data the user does so entirely at their own risk and explicitly acknowledges that he/she is aware of and agrees to be bound by this disclaimer and agrees not to present any claim or demand of any nature against the USACE, its officers, agents, employees or servants in any forum whatsoever for any damages of any nature whatsoever that may result from or may be caused in any way by the use of the maps and associated data.





**US Army Corps
of Engineers**

RM 104 R Crain's

1:65,000

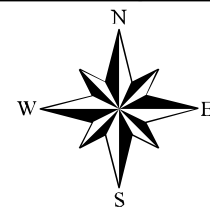
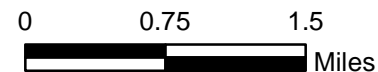
Distance to gage: 4 miles

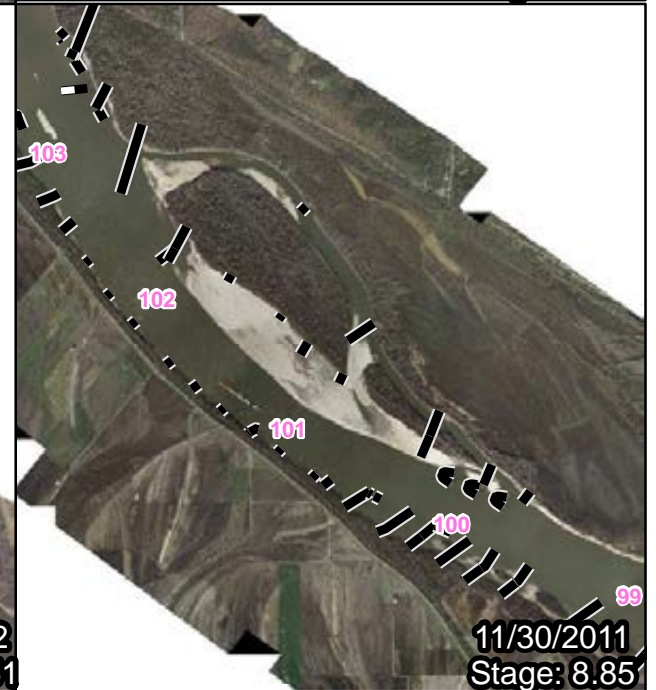
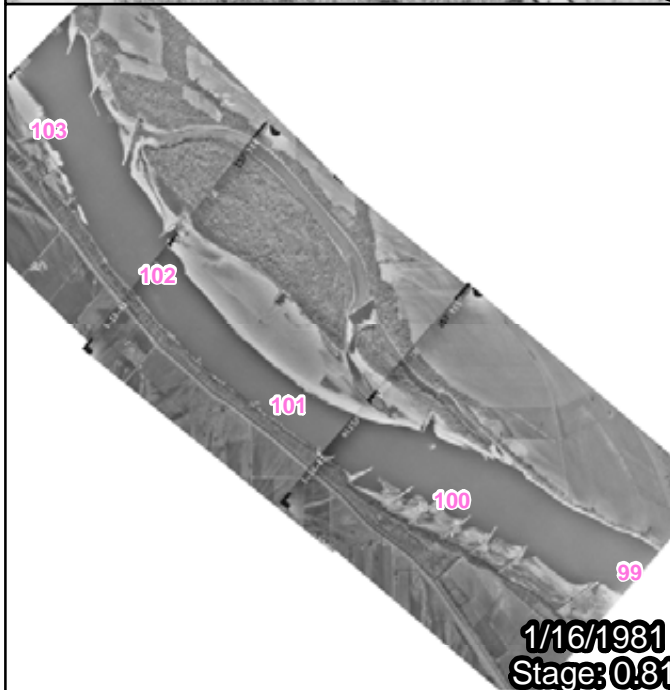
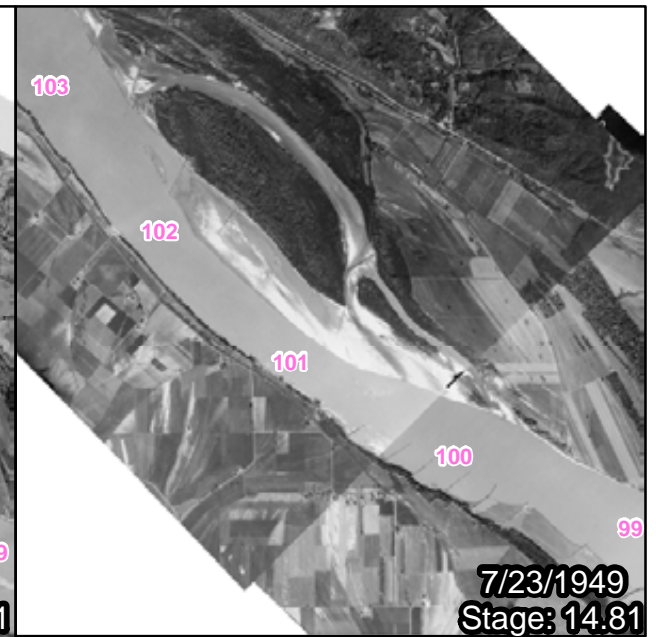
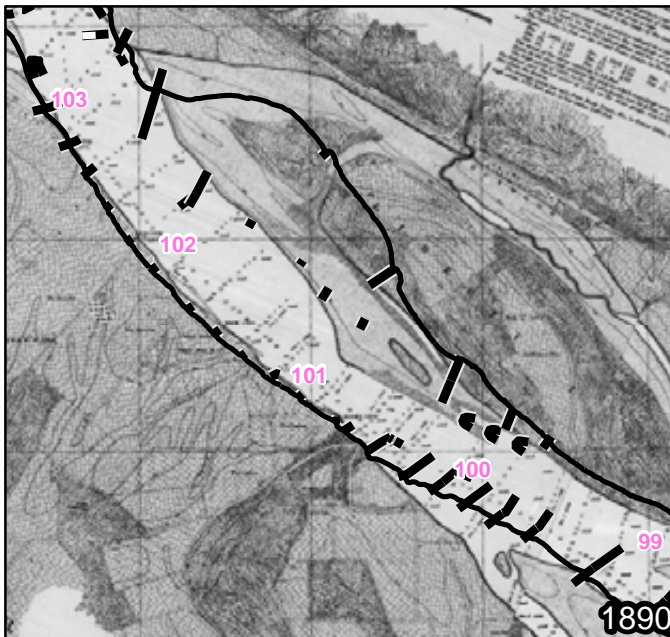
Created by: Erin Marks Guntren
Date Created: 08August2012

Filepath: \\mvs-netapp2\gis\Gis\MVD\LMR_Sec_Channel_2000\MMR_Side_Channel_Study\maps

DISCLAIMER - While the United States Army Corps of Engineers, (hereinafter referred to as USACE) has made a reasonable effort to insure the accuracy of the maps and associated data, it should be explicitly noted that USACE makes no warranty, representation or guaranty, either express or implied, as to the content, sequence, accuracy, timeliness or completeness of any of the data provided herein. The USACE, its officers, agents, employees, or servants shall assume no liability of any nature for any errors, omissions, or inaccuracies in the information provided regardless of how caused. The USACE, its officers, agents, employees or servants

shall assume no liability for any decisions made or actions taken or not taken by the user of the maps and associated data in reliance upon any information or data furnished here. By using these maps and associated data the user does so entirely at their own risk and explicitly acknowledges that he/she is aware of and agrees to be bound by this disclaimer and agrees not to present any claim or demand of any nature against the USACE, its officers, agents, employees or servants in any forum whatsoever for any damages of any nature whatsoever that may result from or may be caused in any way by the use of the maps and associated data.





**US Army Corps
of Engineers®**

RM 101 L Liberty

1:65,000

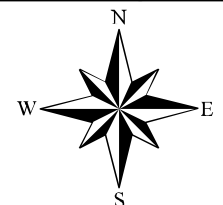
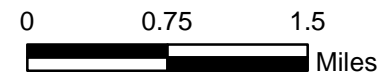
Distance to gage: 1 miles

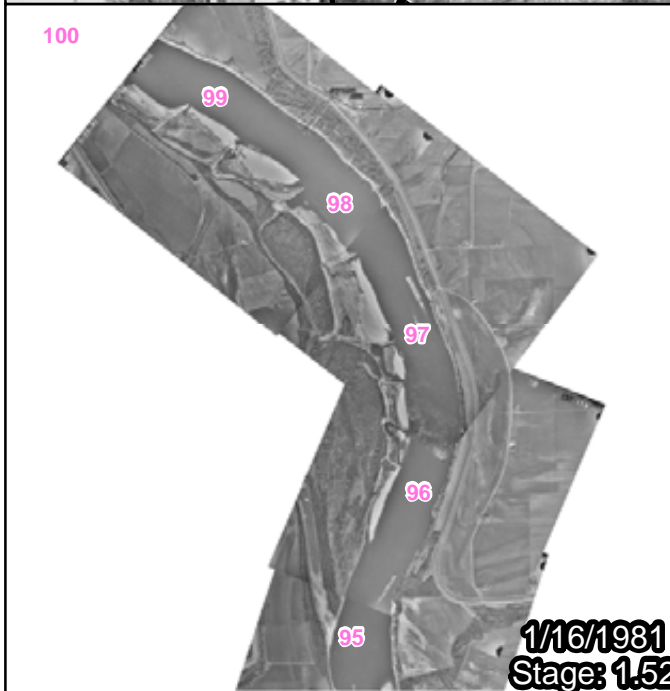
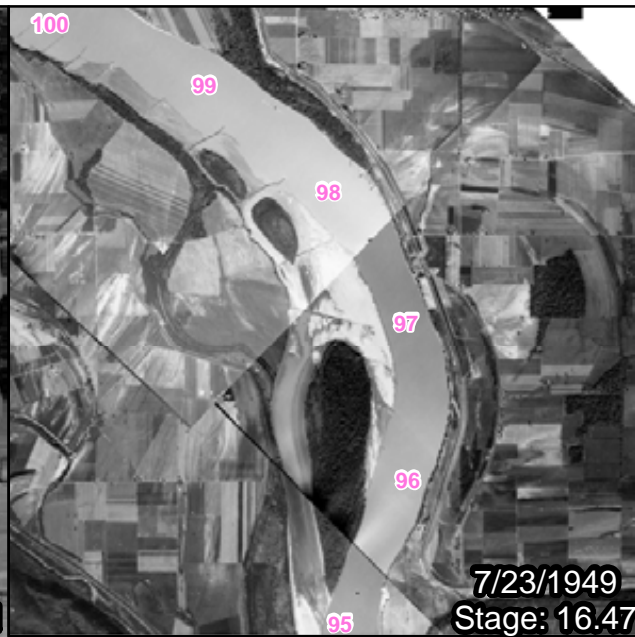
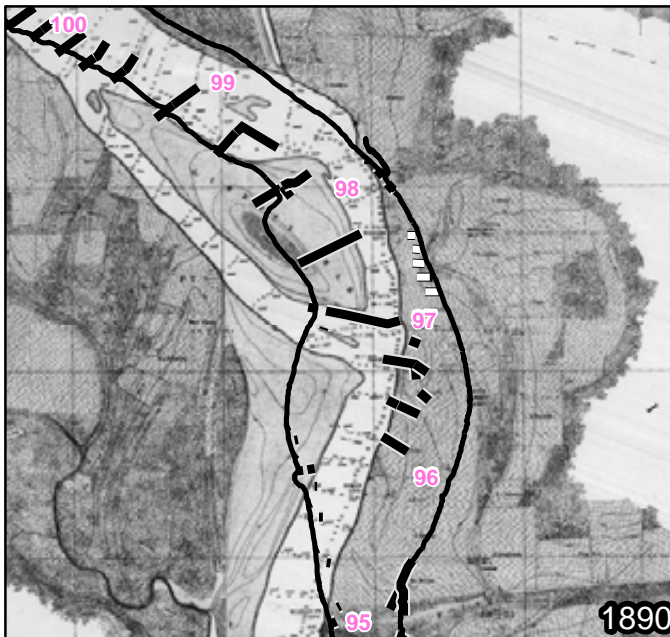
Created by: Erin Marks Guntren
Date Created: 08August2012

Filepath: \\mvs-netapp2\gis\Gis\MVD\LMR_Sec_Channel_2000\MMR_Side_Channel_Study\maps

DISCLAIMER - While the United States Army Corps of Engineers, (hereinafter referred to USACE) has made a reasonable effort to insure the accuracy of the maps and associated data, it should be explicitly noted that USACE makes no warranty, representation or guaranty, either express or implied, as to the content, sequence, accuracy, timeliness or completeness of any of the data provided herein. The USACE, its officers, agents, employees, or servants shall assume no liability of any nature for any errors, omissions, or inaccuracies in the information provided regardless of how caused. The USACE, its officers, agents, employees or servants

shall assume no liability for any decisions made or actions taken or not taken by the user of the maps and associated data in reliance upon any information or data furnished here. By using these maps and associated data the user does so entirely at their own risk and explicitly acknowledges that he/she is aware of and agrees to be bound by this disclaimer and agrees not to present any claim or demand of any nature against the USACE, its officers, agents, employees or servants in any forum whatsoever for any damages of any nature whatsoever that may result from or may be caused in any way by the use of the maps and associated data.





**US Army Corps
of Engineers**

RM 97 R Jones

1:75,000

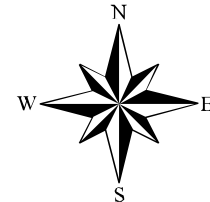
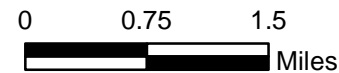
Distance to gage: 3 miles

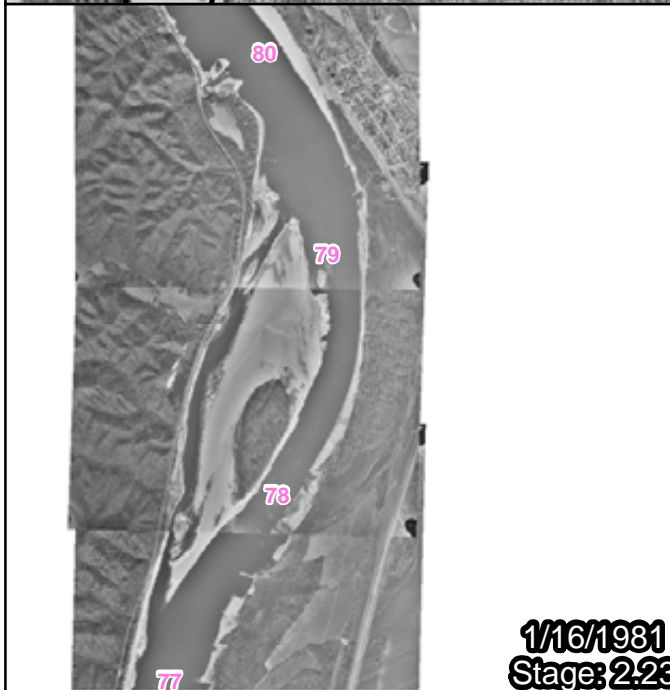
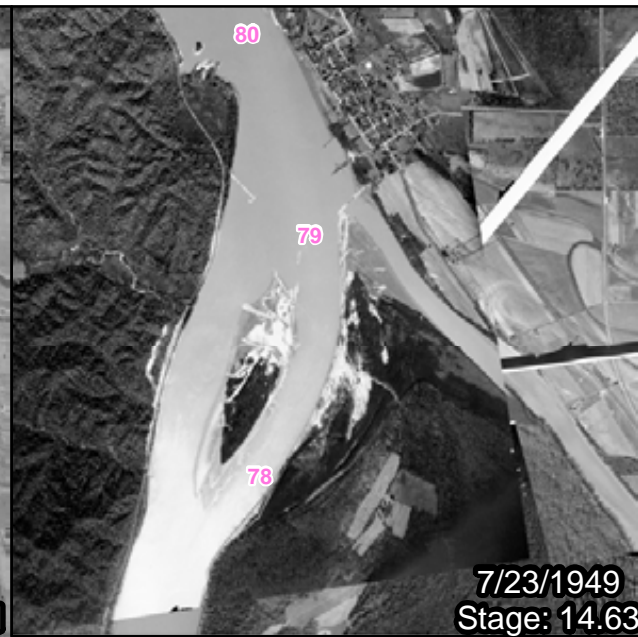
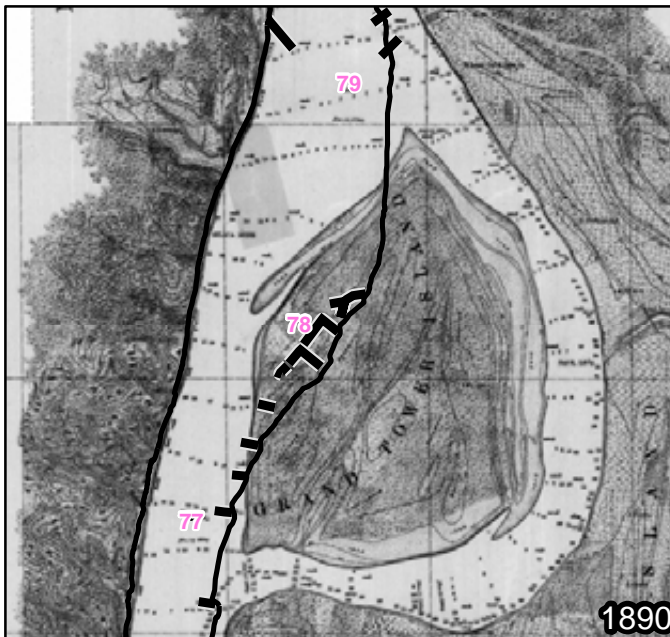
Created by: Erin Marks Guntren
Date Created: 08August2012

Filepath: \\mvs-netapp2\gis\Gis\MVD\LMR_Sec_Channel_2000\MMR_Side_Channel_Study\maps

DISCLAIMER - While the United States Army Corps of Engineers, (hereinafter referred to as USACE) has made a reasonable effort to insure the accuracy of the maps and associated data, it should be explicitly noted that USACE makes no warranty, representation or guaranty, either express or implied, as to the content, sequence, accuracy, timeliness or completeness of any of the data provided herein. The USACE, its officers, agents, employees, or servants shall assume no liability of any nature for any errors, omissions, or inaccuracies in the information provided regardless of how caused. The USACE, its officers, agents, employees or servants

shall assume no liability for any decisions made or actions taken or not taken by the user of the maps and associated data in reliance upon any information or data furnished here. By using these maps and associated data the user does so entirely at their own risk and explicitly acknowledges that he/she is aware of and agrees to be bound by this disclaimer and agrees not to present any claim or demand of any nature against the USACE, its officers, agents, employees or servants in any forum whatsoever for any damages of any nature whatsoever that may result from or may be caused in any way by the use of the maps and associated data.





**US Army Corps
of Engineers®**

RM 78 R Cottonwood

1:55,000

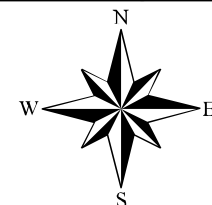
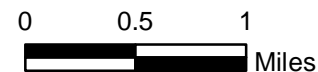
Distance to gage: 4 miles

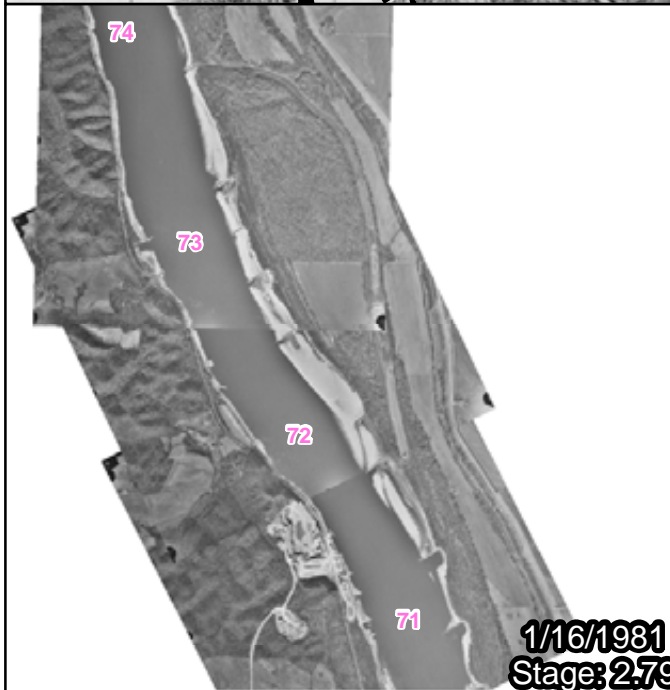
Created by: Erin Marks Guntren
Date Created: 08August2012

Filepath: \\mvs-netapp2\gis\Gis\MVD\LMR_Sec_Channel_2000\MMR_Side_Channel_Study\maps

DISCLAIMER - While the United States Army Corps of Engineers, (hereinafter referred to as USACE) has made a reasonable effort to insure the accuracy of the maps and associated data, it should be explicitly noted that USACE makes no warranty, representation or guaranty, either express or implied, as to the content, sequence, accuracy, timeliness or completeness of any of the data provided herein. The USACE, its officers, agents, employees, or servants shall assume no liability of any nature for any errors, omissions, or inaccuracies in the information provided regardless of how caused. The USACE, its officers, agents, employees or servants

shall assume no liability for any decisions made or actions taken or not taken by the user of the maps and associated data in reliance upon any information or data furnished here. By using these maps and associated data the user does so entirely at their own risk and explicitly acknowledges that he/she is aware of and agrees to be bound by this disclaimer and agrees not to present any claim or demand of any nature against the USACE, its officers, agents, employees or servants in any forum whatsoever for any damages of any nature whatsoever that may result from or may be caused in any way by the use of the maps and associated data.





**US Army Corps
of Engineers®**

RM 73 L Crawford

1:55,000

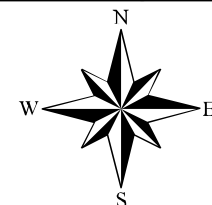
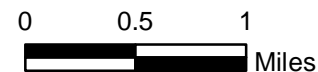
Distance to gage: 7 miles

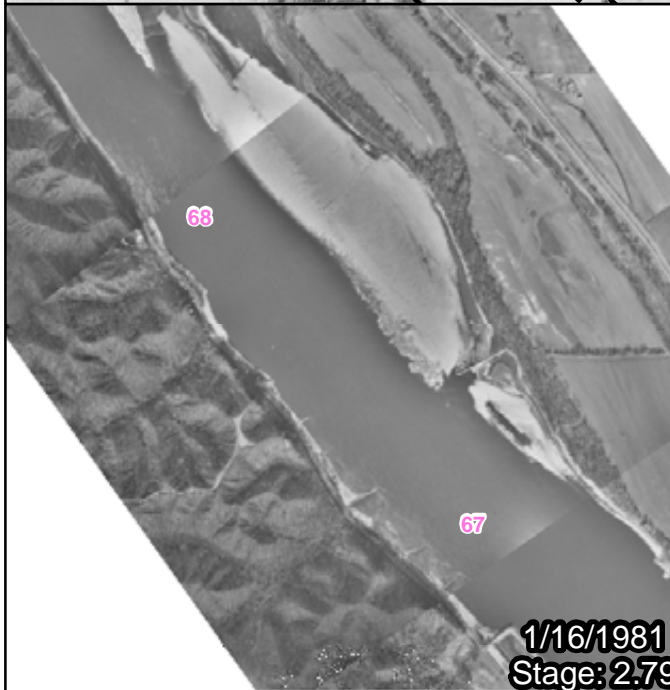
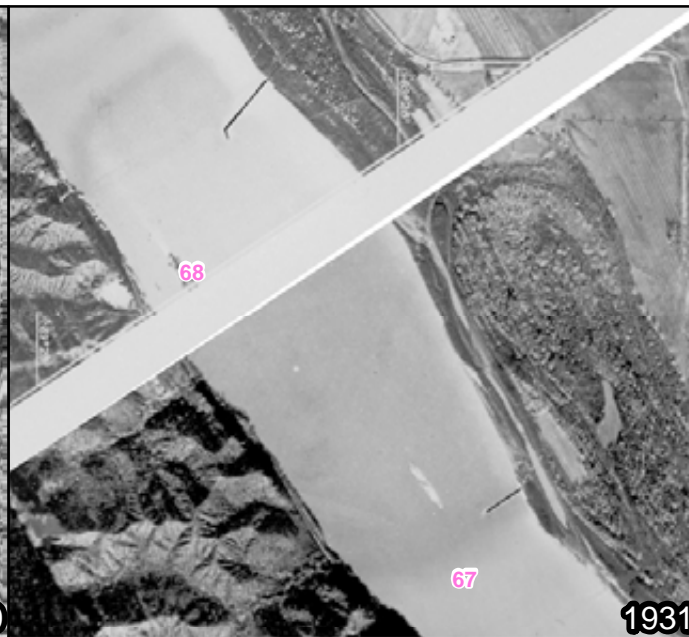
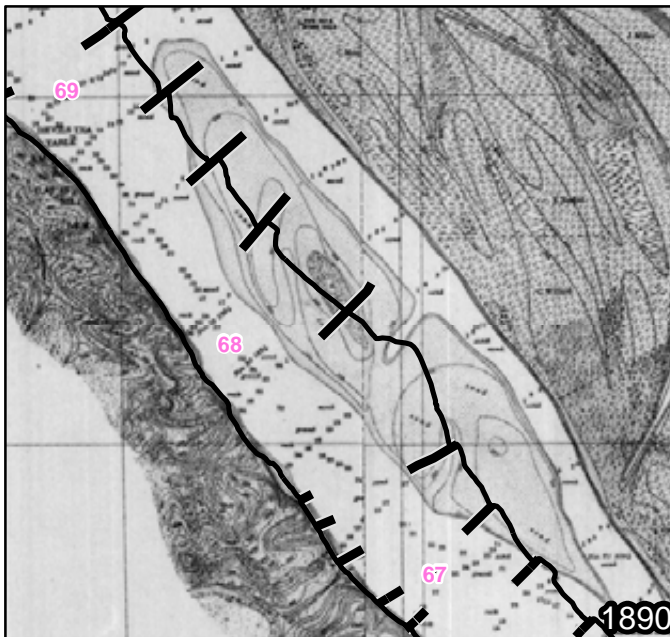
Created by: Erin Marks Guntren
Date Created: 08August2012

Filepath: \\mvs-netapp2\gis\Gis\MVD\LMR_Sec_Channel_2000\MMR_Side_Channel_Study\maps

DISCLAIMER - While the United States Army Corps of Engineers, (hereinafter referred to USACE) has made a reasonable effort to insure the accuracy of the maps and associated data, it should be explicitly noted that USACE makes no warranty, representation or guaranty, either express or implied, as to the content, sequence, accuracy, timeliness or completeness of any of the data provided herein. The USACE, its officers, agents, employees, or servants shall assume no liability of any nature for any errors, omissions, or inaccuracies in the information provided regardless of how caused. The USACE, its officers, agents, employees or servants

shall assume no liability for any decisions made or actions taken or not taken by the user of the maps and associated data in reliance upon any information or data furnished here. By using these maps and associated data the user does so entirely at their own risk and explicitly acknowledges that he/she is aware of and agrees to be bound by this disclaimer and agrees not to present any claim or demand of any nature against the USACE, its officers, agents, employees or servants in any forum whatsoever for any damages of any nature whatsoever that may result from or may be caused in any way by the use of the maps and associated data.





**US Army Corps
of Engineers**

RM 68 R Vancil Towhead

1:30,000

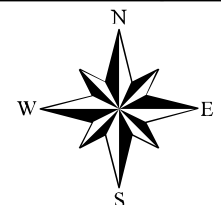
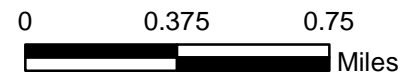
Distance to gage: 2 miles

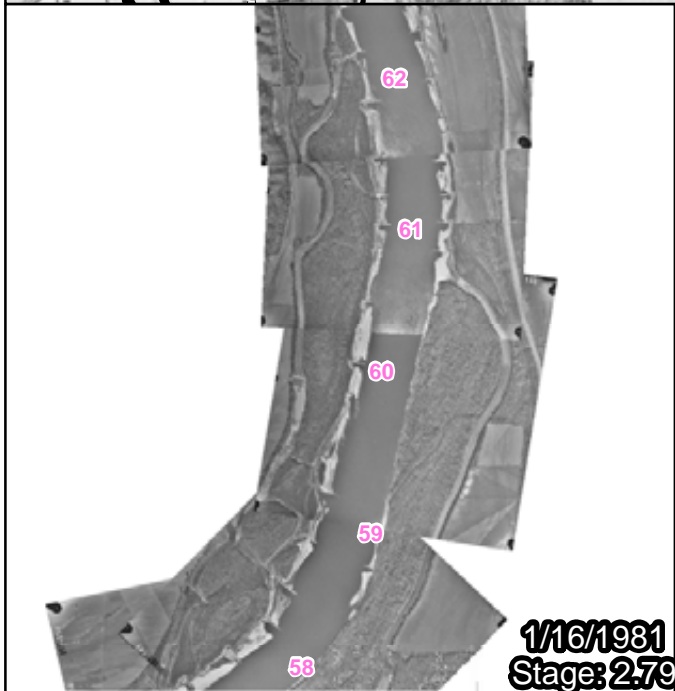
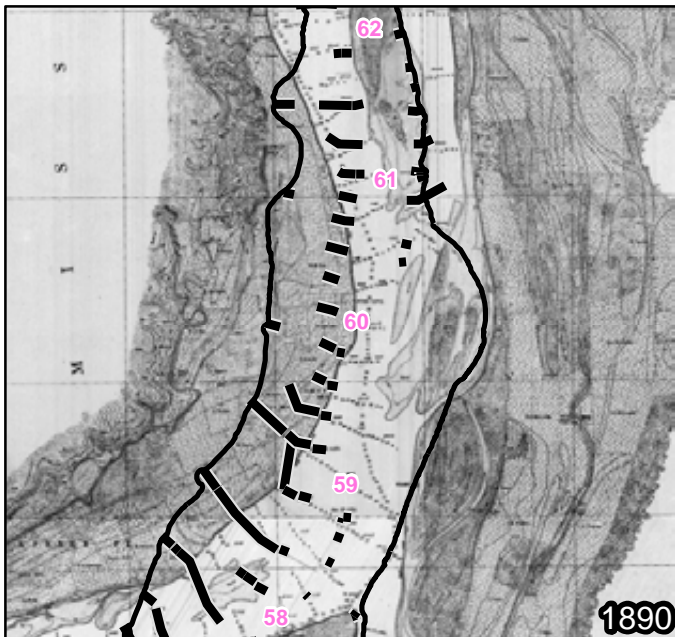
Created by: Erin Marks Guntren
Date Created: 08August2012

Filepath: \\mvs-netapp2\gis\Gis\MVD\LMR_Sec_Channel_2000\MMR_Side_Channel_Study\maps

DISCLAIMER - While the United States Army Corps of Engineers, (hereinafter referred to USACE) has made a reasonable effort to insure the accuracy of the maps and associated data, it should be explicitly noted that USACE makes no warranty, representation or guaranty, either express or implied, as to the content, sequence, accuracy, timeliness or completeness of any of the data provided herein. The USACE, its officers, agents, employees, or servants shall assume no liability of any nature for any errors, omissions, or inaccuracies in the information provided regardless of how caused. The USACE, its officers, agents, employees or servants

shall assume no liability for any decisions made or actions taken or not taken by the user of the maps and associated data in reliance upon any information or data furnished here. By using these maps and associated data the user does so entirely at their own risk and explicitly acknowledges that he/she is aware of and agrees to be bound by this disclaimer and agrees not to present any claim or demand of any nature against the USACE, its officers, agents, employees or servants in any forum whatsoever for any damages of any nature whatsoever that may result from or may be caused in any way by the use of the maps and associated data.





RM 60 R Schenimann

1:75,000

Distance to gage: 8 miles

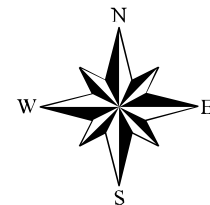
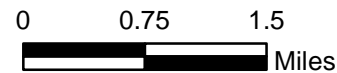
**US Army Corps
of Engineers**

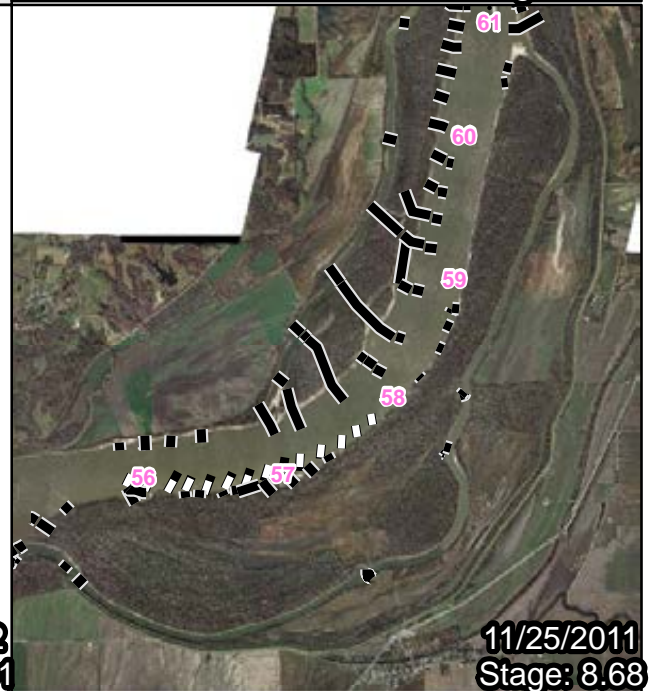
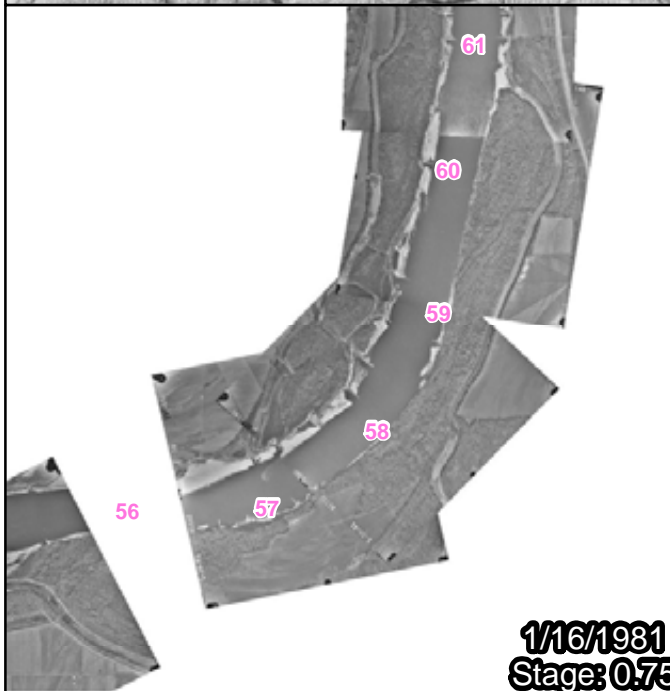
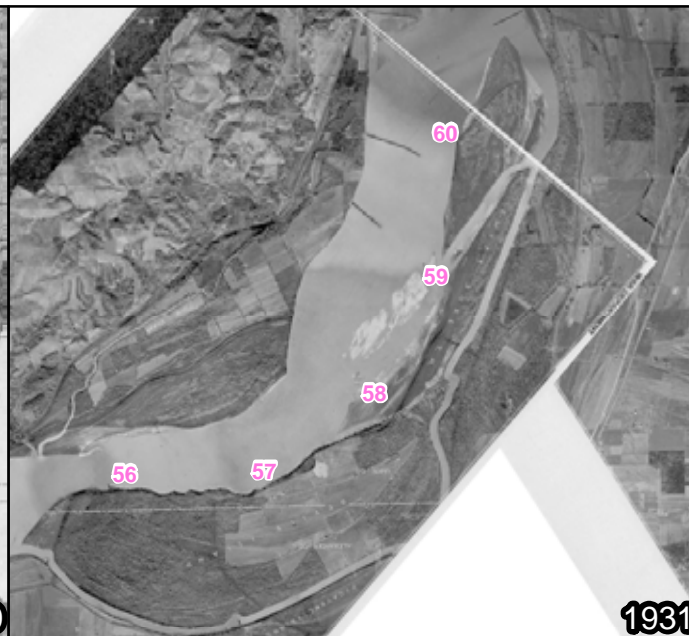
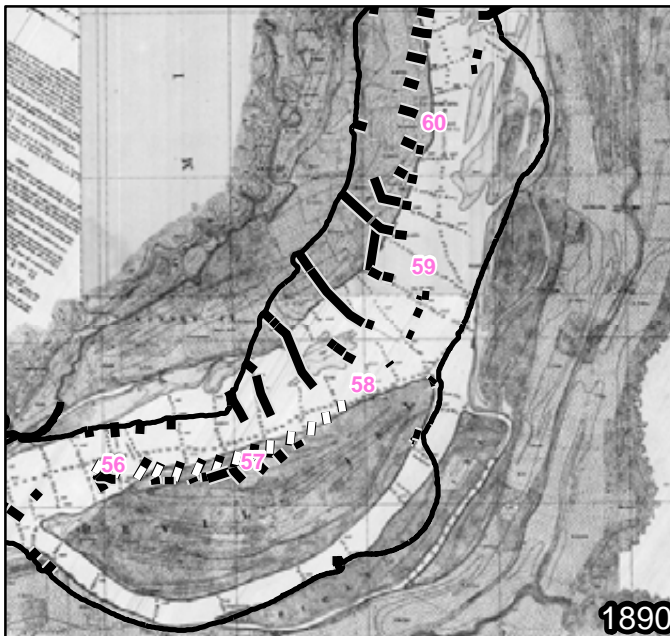
Created by: Erin Marks Guntren
Date Created: 08August2012

Filepath: \\mvs-netapp2\gis\GIS\MVD\LMR_Sec_Channel_2000\MMR_Side_Channel_Study\maps

DISCLAIMER - While the United States Army Corps of Engineers, (hereinafter referred to as USACE) has made a reasonable effort to insure the accuracy of the maps and associated data, it should be explicitly noted that USACE makes no warranty, representation or guaranty, either express or implied, as to the content, sequence, accuracy, timeliness or completeness of any of the data provided herein. The USACE, its officers, agents, employees, or servants shall assume no liability of any nature for any errors, omissions, or inaccuracies in the information provided regardless of how caused. The USACE, its officers, agents, employees or servants

shall assume no liability for any decisions made or actions taken or not taken by the user of the maps and associated data in reliance upon any information or data furnished here. By using these maps and associated data the user does so entirely at their own risk and explicitly acknowledges that he/she is aware of and agrees to be bound by this disclaimer and agrees not to present any claim or demand of any nature against the USACE, its officers, agents, employees or servants in any forum whatsoever for any damages of any nature whatsoever that may result from or may be caused in any way by the use of the maps and associated data.





RM 58 L Picayune

1:85,000

Distance to gage: 6 miles



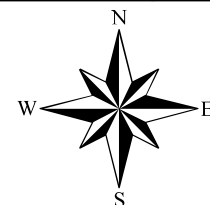
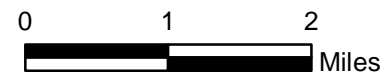
**US Army Corps
of Engineers**

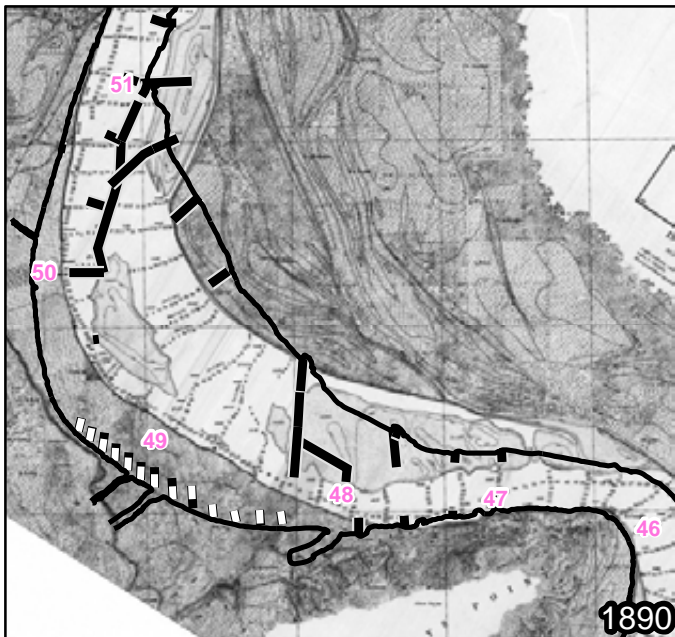
Created by: Erin Marks Guntren
Date Created: 08August2012

Filepath: \\mvs-netapp2\gis\GIS\MVD\LMR_Sec_Channel_2000\MMR_Side_Channel_Study\maps

DISCLAIMER - While the United States Army Corps of Engineers, (hereinafter referred to as USACE) has made a reasonable effort to insure the accuracy of the maps and associated data, its should be explicitly noted that USACE makes no warranty, representation or guaranty, either express or implied, as to the content, sequence, accuracy, timeliness or completeness of any of the data provided herein. The USACE, its officers, agents, employees, or servants shall assume no liability of any nature for any errors, omissions, or inaccuracies in the information provided regardless of how caused. The USACE, its officers, agents, employees or servants

shall assume no liability for any decisions made or actions taken or not taken by the user of the maps and associated data in reliance upon any information or data furnished here. By using these maps and associated data the user does so entirely at their own risk and explicitly acknowledges that he/she is aware of and agrees to be bound by this disclaimer and agrees not to present any claim or demand of any nature against the USACE, its officers, agents, employees or servants in any forum whatsoever for any damages of any nature whatsoever that may result from or may be caused in any way by the use of the maps and associated data.





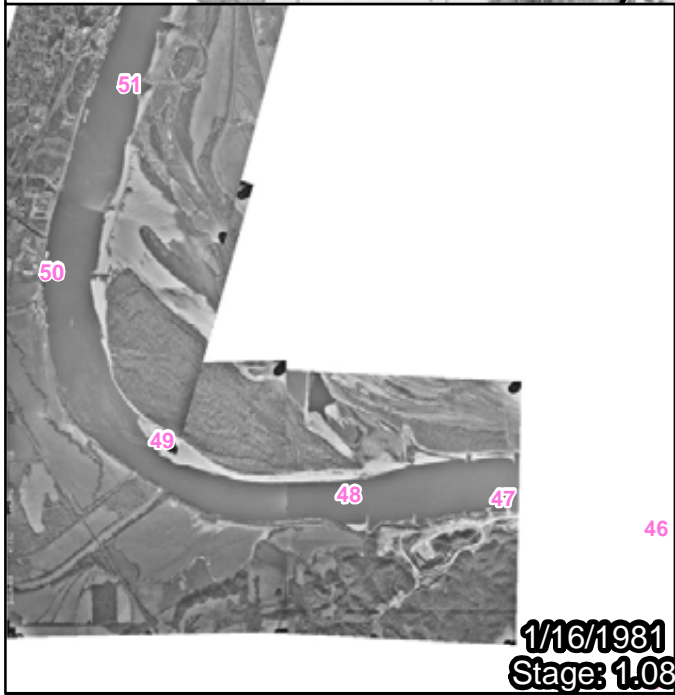
1890



1931



7/23/1949
Stage: 15.48



1/16/1981
Stage: 1.08



1/15/2002
Stage: 4.78



11/30/2011
Stage: 8.68



**US Army Corps
of Engineers®**

RM 49 L Marquette

1:75,000

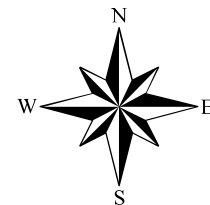
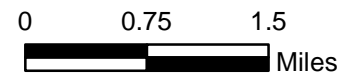
Distance to gage: 2.7 miles

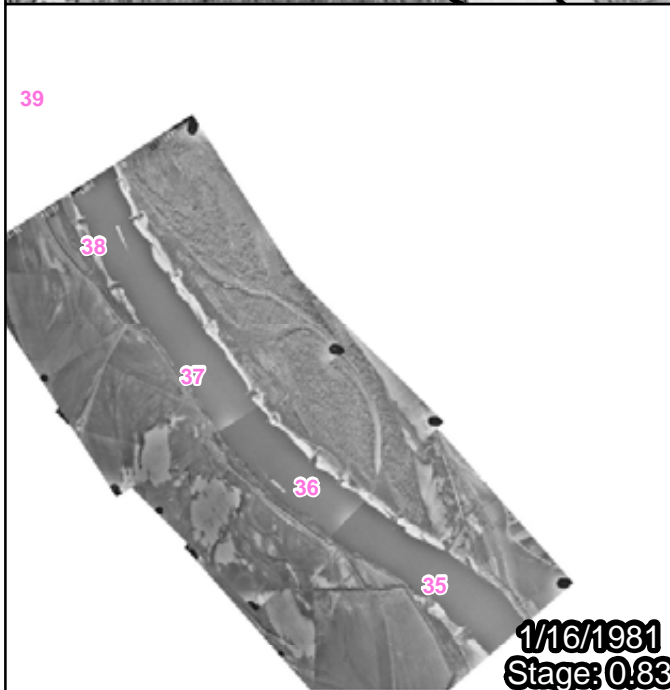
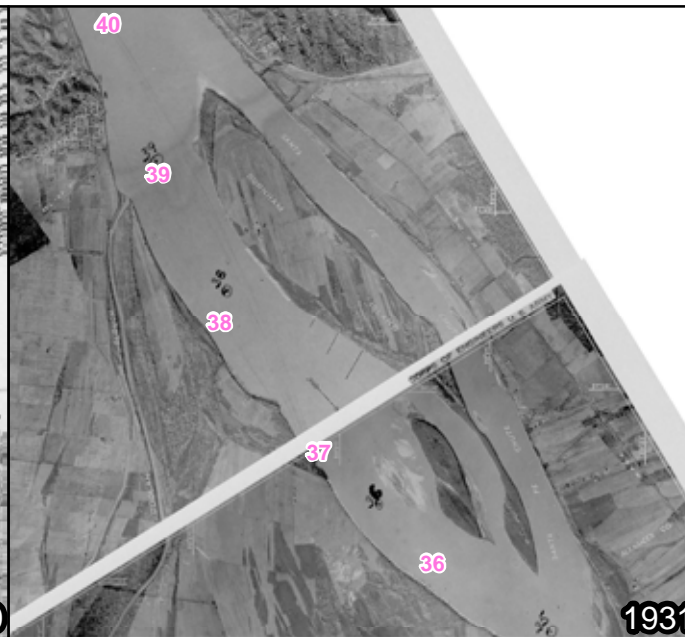
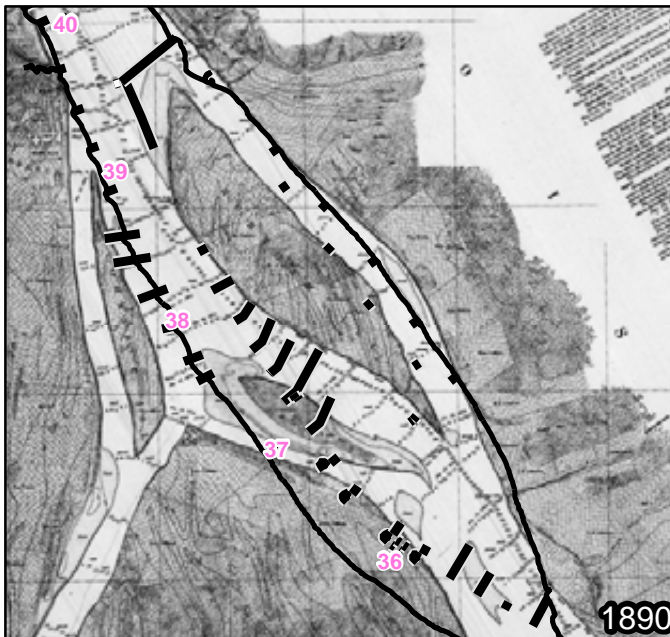
Created by: Erin Marks Guntren
Date Created: 08August2012

Filepath: \\mvs\gis\Gis\MVD\LMR_Sec_Channel_2000\IMMR_Side_Channel_Study\maps

DISCLAIMER - While the United States Army Corps of Engineers, (hereinafter referred to USACE) has made a reasonable effort to insure the accuracy of the maps and associated data, its should be explicitly noted that USACE makes no warranty, representation or guaranty, either express or implied, as to the content, sequence, accuracy, timeliness or completeness of any of the data provided herein. The USACE, its officers, agents, employees, or servants shall assume no liability of any nature for any errors, omissions, or inaccuracies in the information provided regardless of how caused. The USACE, its officers, agents, employees or servants

shall assume no liability for any decisions made or actions taken or not taken by the user of the maps and associated data in reliance upon any information or data furnished here. By using these maps and associated data the user does so entirely at their own risk and explicitly acknowledges that he/she is aware of and agrees to be bound by this disclaimer and agrees not to present any claim or demand of any nature against the USACE, its officers, agents, employees or servants in any forum whatsoever for any damages of any nature whatsoever that may result from or may be caused in any way by the use of the maps and associated data.





**US Army Corps
of Engineers®**

RM 38 L Sante Fe

1:75,000

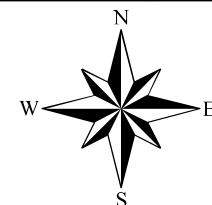
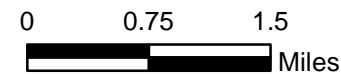
Distance to gage: 1.5 miles

Created by: Erin Marks Guntren
Date Created: 08August2012

Filepath: \\mvs-netapp2\gis\Gis\MVD\LMR_Sec_Channel_2000\MMR_Side_Channel_Study\maps

DISCLAIMER - While the United States Army Corps of Engineers, (hereinafter referred to USACE) has made a reasonable effort to insure the accuracy of the maps and associated data, it should be explicitly noted that USACE makes no warranty, representation or guaranty, either express or implied, as to the content, sequence, accuracy, timeliness or completeness of any of the data provided herein. The USACE, its officers, agents, employees, or servants shall assume no liability of any nature for any errors, omissions, or inaccuracies in the information provided regardless of how caused. The USACE, its officers, agents, employees or servants

shall assume no liability for any decisions made or actions taken or not taken by the user of the maps and associated data in reliance upon any information or data furnished here. By using these maps and associated data the user does so entirely at their own risk and explicitly acknowledges that he/she is aware of and agrees to be bound by this disclaimer and agrees not to present any claim or demand of any nature against the USACE, its officers, agents, employees or servants in any forum whatsoever for any damages of any nature whatsoever that may result from or may be caused in any way by the use of the maps and associated data.





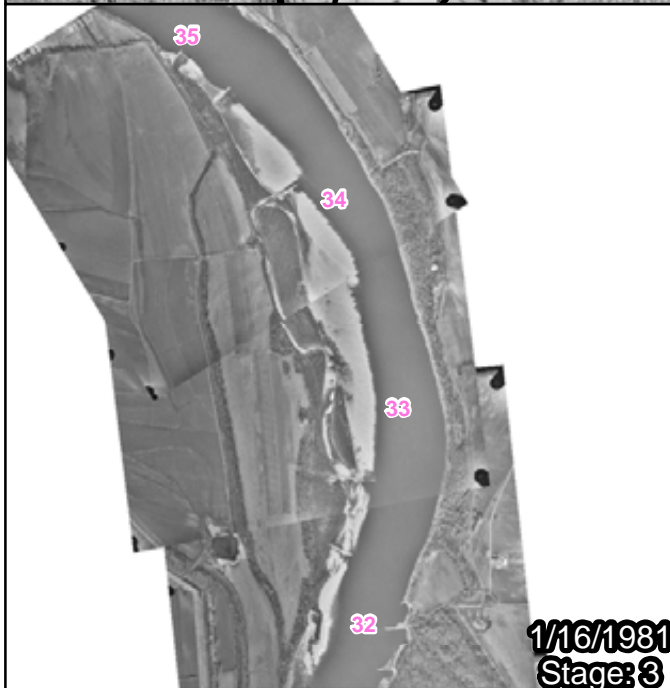
1890



1931

Photo missing from dataset.

7/23/1949
Stage: 5.83



1/16/1981
Stage: 3



1/15/2002
Stage: 8.86



11/30/2011
Stage: 13.63



US Army Corps
of Engineers

RM 33 R Billings

1:55,000

Distance to gage: 10 miles

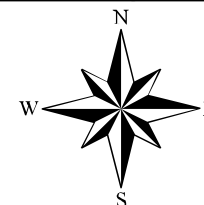
Created by: Erin Marks Guntren
Date Created: 07August2012

Filepath: \\mvs-netapp2\gis\Gis\MVD\LMR_Sec_Channel_2000\MMR_Side_Channel_Study\maps

DISCLAIMER - While the United States Army Corps of Engineers, (hereinafter referred to as USACE) has made a reasonable effort to insure the accuracy of the maps and associated data, it should be explicitly noted that USACE makes no warranty, representation or guaranty, either express or implied, as to the content, sequence, accuracy, timeliness or completeness of any of the data provided herein. The USACE, its officers, agents, employees, or servants shall assume no liability of any nature for any errors, omissions, or inaccuracies in the information provided regardless of how caused. The USACE, its officers, agents, employees or servants

shall assume no liability for any decisions made or actions taken or not taken by the user of the maps and associated data in reliance upon any information or data furnished here. By using these maps and associated data the user does so entirely at their own risk and explicitly acknowledges that he/she is aware of and agrees to be bound by this disclaimer and agrees not to present any claim or demand of any nature against the USACE, its officers, agents, employees or servants in any forum whatsoever for any damages of any nature whatsoever that may result from or may be caused in any way by the use of the maps and associated data.

0 0.5 1
Miles





1890



1931

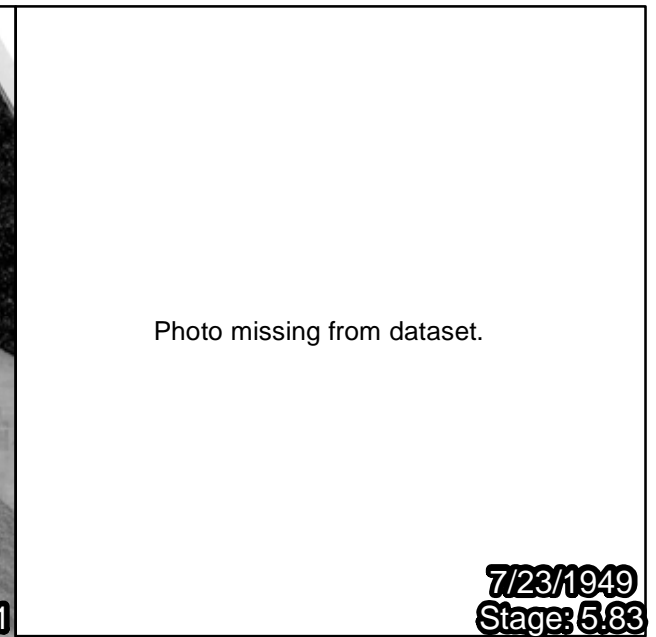
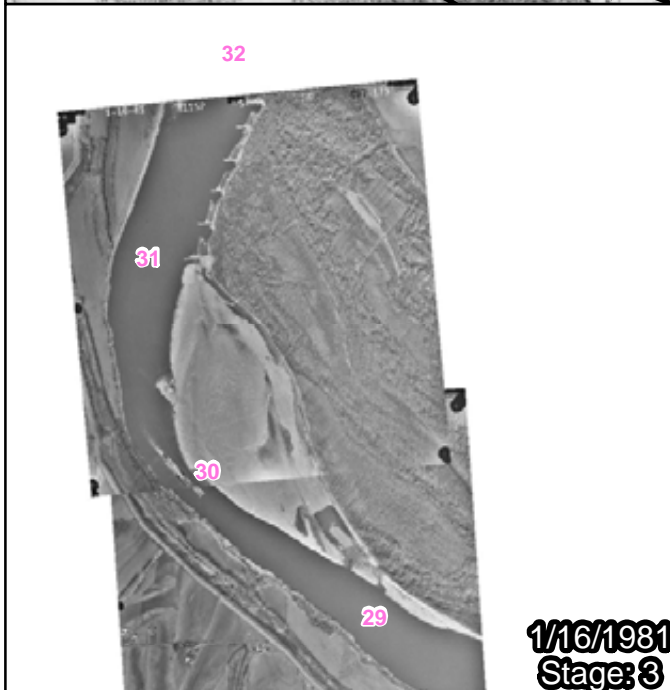


Photo missing from dataset.

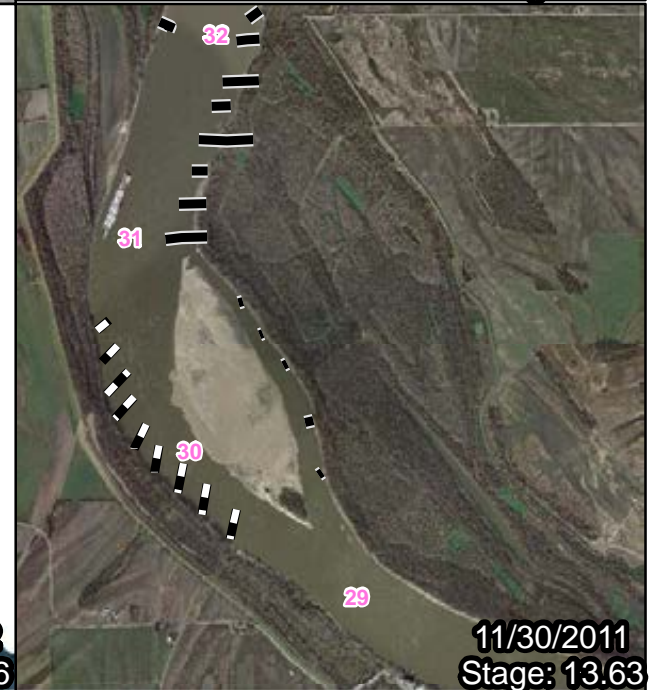
7/23/1949
Stage: 5.83



1/16/1981
Stage: 3



1/15/2002
Stage: 8.86



11/30/2011
Stage: 13.63



**US Army Corps
of Engineers**

RM 30 L Bumgard

1:55,000

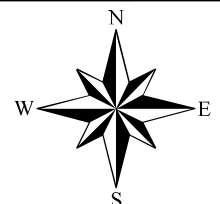
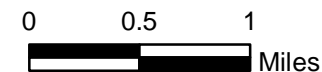
Distance to gage: 10 miles

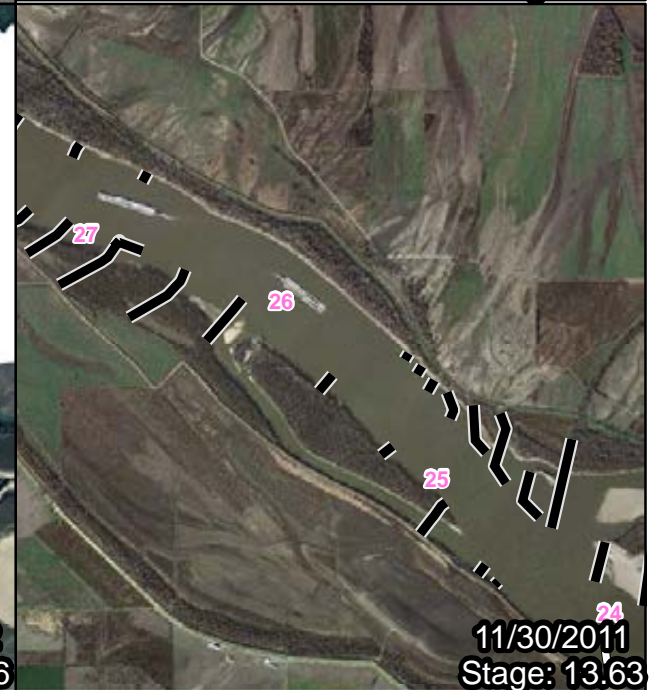
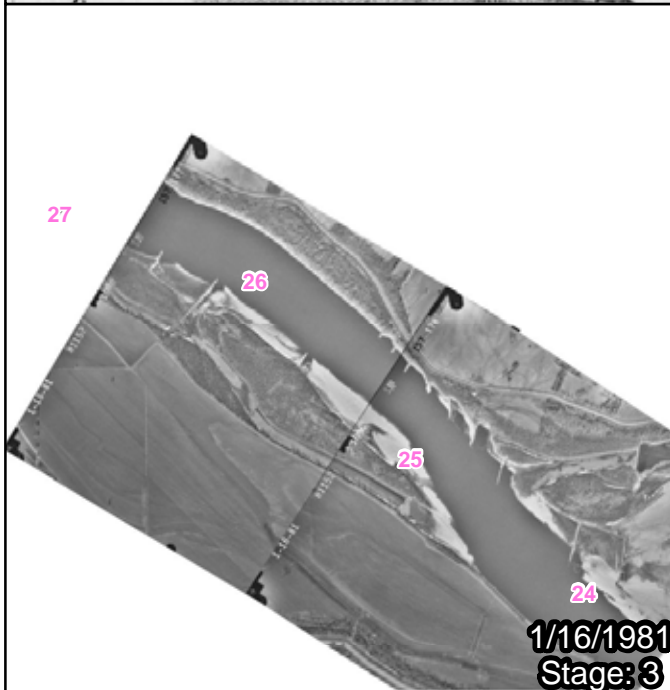
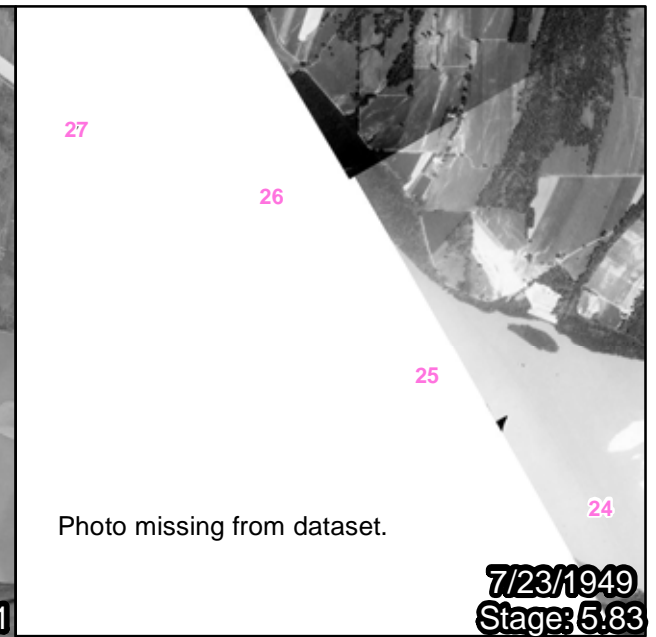
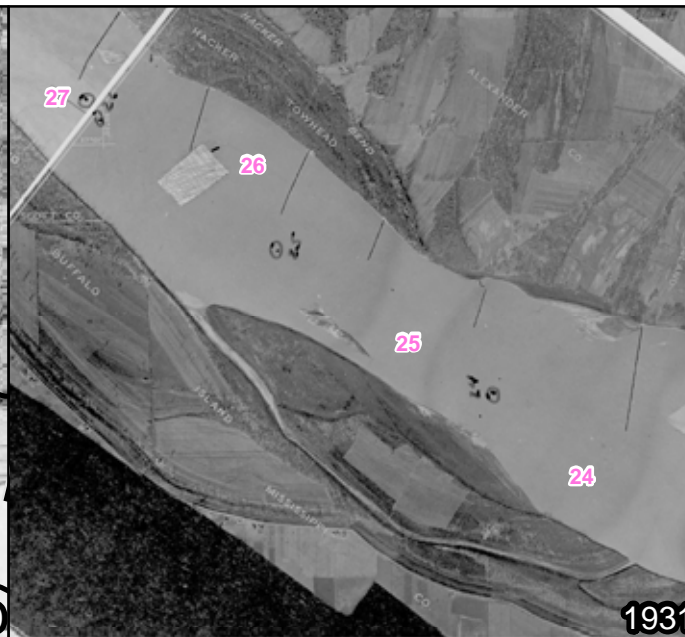
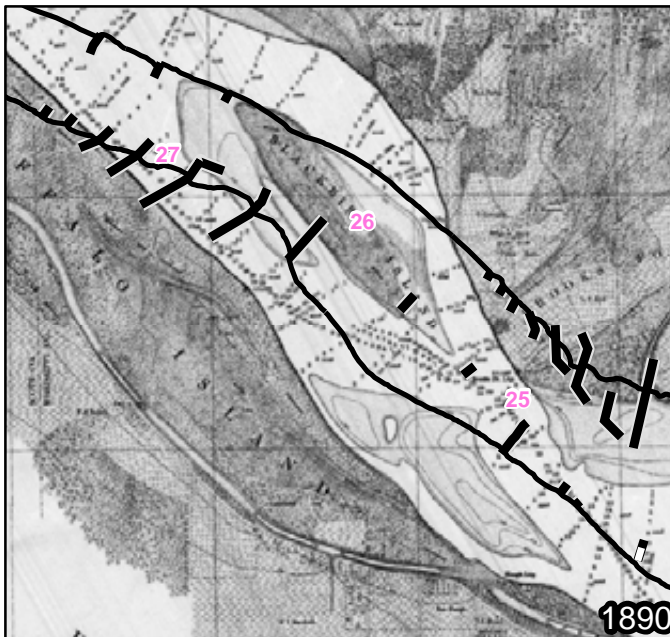
Created by: Erin Marks Guntren
Date Created: 07August2012

Filepath: \\mvs-netapp2\gis\GIS\MVD\LMR_Sec_Channel_2000\MMR_Side_Channel_Study\maps

DISCLAIMER - While the United States Army Corps of Engineers, (hereinafter referred to USACE) has made a reasonable effort to insure the accuracy of the maps and associated data, it should be explicitly noted that USACE makes no warranty, representation or guaranty, either express or implied, as to the content, sequence, accuracy, timeliness or completeness of any of the data provided herein. The USACE, its officers, agents, employees, or servants shall assume no liability of any nature for any errors, omissions, or inaccuracies in the information provided regardless of how caused. The USACE, its officers, agents, employees or servants

shall assume no liability for any decisions made or actions taken or not taken by the user of the maps and associated data in reliance upon any information or data furnished here. By using these maps and associated data the user does so entirely at their own risk and explicitly acknowledges that he/she is aware of and agrees to be bound by this disclaimer and agrees not to present any claim or demand of any nature against the USACE, its officers, agents, employees or servants in any forum whatsoever for any damages of any nature whatsoever that may result from or may be caused in any way by the use of the maps and associated data.





**US Army Corps
of Engineers®**

RM 25 R Buffalo

1:55,000

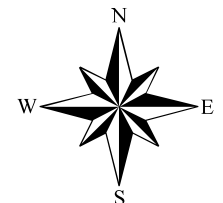
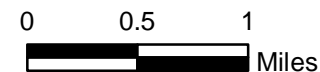
Distance to gage: 10 miles

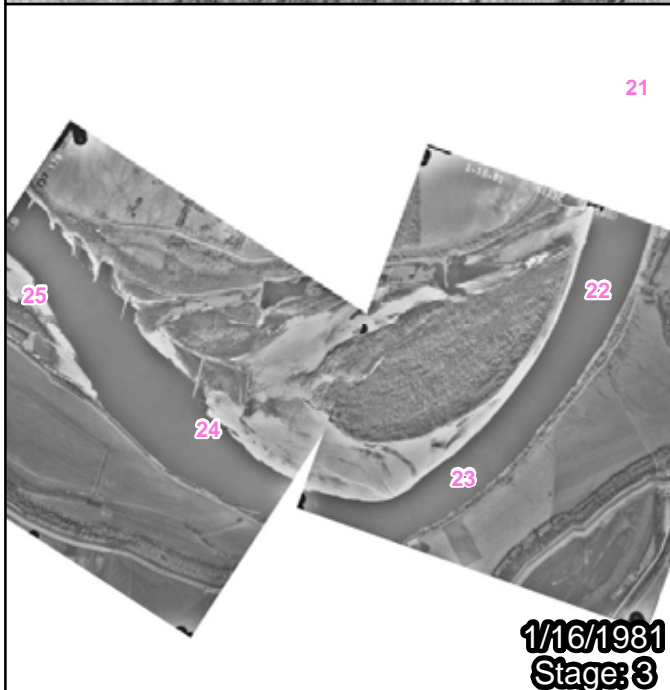
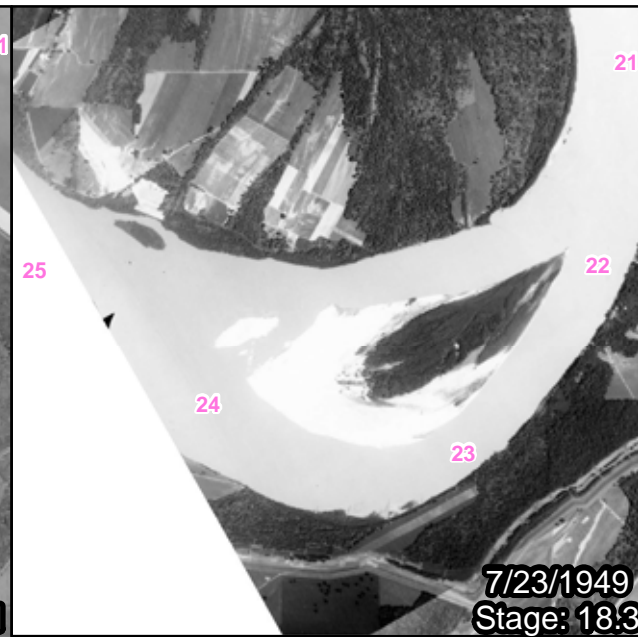
Created by: Erin Marks Guntren
Date Created: 07August2012

Filepath: \\mvs-netapp2\gis\GIS\MVD\LMR_Sec_Channel_2000\MMR_Side_Channel_Study\maps

DISCLAIMER - While the United States Army Corps of Engineers, (hereinafter referred to USACE) has made a reasonable effort to insure the accuracy of the maps and associated data, its should be explicitly noted that USACE makes no warranty, representation or guaranty, either express or implied, as to the content, sequence, accuracy, timeliness or completeness of any of the data provided herein. The USACE, its officers, agents, employees, or servants shall assume no liability of any nature for any errors, omissions, or inaccuracies in the information provided regardless of how caused. The USACE, its officers, agents, employees or servants

shall assume no liability for any decisions made or actions taken or not taken by the user of the maps and associated data in reliance upon any information or data furnished here. By using these maps and associated data the user does so entirely at their own risk and explicitly acknowledges that he/she is aware of and agrees to be bound by this disclaimer and agrees not to present any claim or demand of any nature against the USACE, its officers, agents, employees or servants in any forum whatsoever for any damages of any nature whatsoever that may result from or may be caused in any way by the use of the maps and associated data.





**US Army Corps
of Engineers®**

RM 23 L Brown's

1:55,000

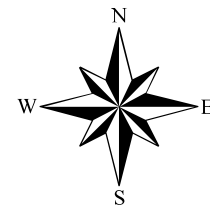
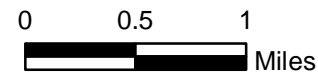
Distance to gage: 3 miles

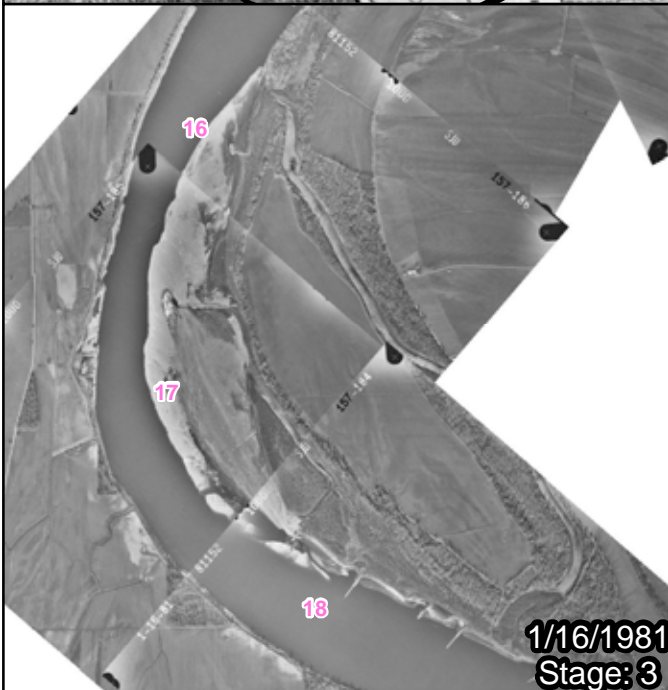
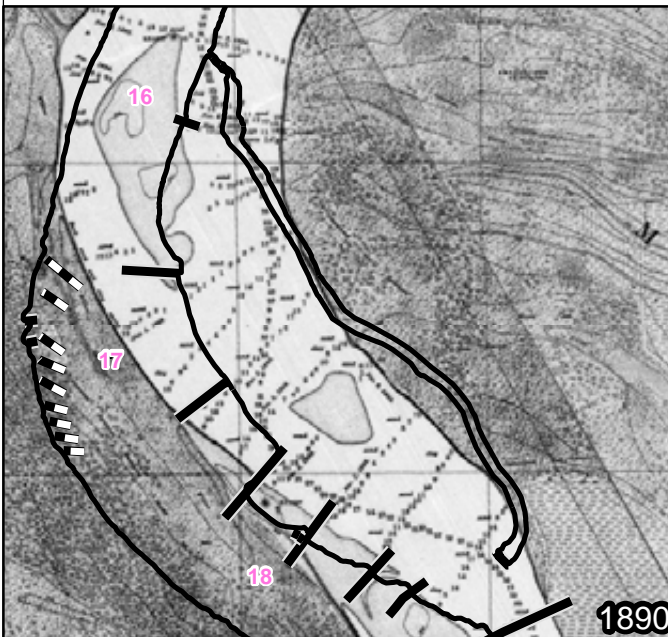
Created by: Erin Marks Guntren
Date Created: 07August2012

Filepath: \\mvs-netapp2\gis\Gis\MVD\LMR_Sec_Channel_2000\MMR_Side_Channel_Study\maps

DISCLAIMER - While the United States Army Corps of Engineers, (hereinafter referred to as USACE) has made a reasonable effort to insure the accuracy of the maps and associated data, it should be explicitly noted that USACE makes no warranty, representation or guaranty, either express or implied, as to the content, sequence, accuracy, timeliness or completeness of any of the data provided herein. The USACE, its officers, agents, employees, or servants shall assume no liability of any nature for any errors, omissions, or inaccuracies in the information provided regardless of how caused. The USACE, its officers, agents, employees or servants

shall assume no liability for any decisions made or actions taken or not taken by the user of the maps and associated data in reliance upon any information or data furnished here. By using these maps and associated data the user does so entirely at their own risk and explicitly acknowledges that he/she is aware of and agrees to be bound by this disclaimer and agrees not to present any claim or demand of any nature against the USACE, its officers, agents, employees or servants in any forum whatsoever for any damages of any nature whatsoever that may result from or may be caused in any way by the use of the maps and associated data.





**US Army Corps
of Engineers®**

RM 17 R Thompson

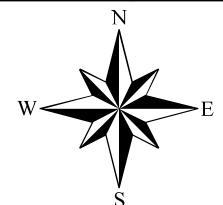
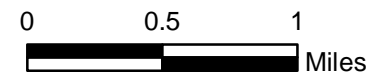
1:45,000 Distance to gage: 3 miles

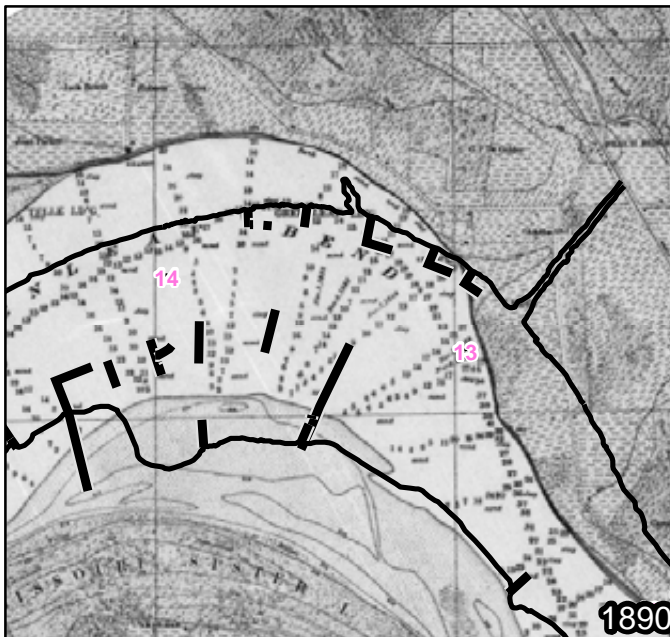
Created by: Erin Marks Guntren
Date Created: 07/August/2012

Filepath: \\mvs-netapp2\gis\GIS\MVD\LMR_Sec_Channel_2000\MMR_Side_Channel_Study\maps

DISCLAIMER - While the United States Army Corps of Engineers, (hereinafter referred to as USACE) has made a reasonable effort to insure the accuracy of the maps and associated data, its should be explicitly noted that USACE makes no warranty, representation or guaranty, either express or implied, as to the content, sequence, accuracy, timeliness or completeness of any of the data provided herein. The USACE, its officers, agents, employees, or servants shall assume no liability of any nature for any errors, omissions, or inaccuracies in the information provided regardless of how caused. The USACE, its officers, agents, employees or servants

shall assume no liability for any decisions made or actions taken or not taken by the user of the maps and associated data in reliance upon any information or data furnished here. By using these maps and associated data the user does so entirely at their own risk and explicitly acknowledges that he/she is aware of and agrees to be bound by this disclaimer and agrees not to present any claim or demand of any nature against the USACE, its officers, agents, employees or servants in any forum whatsoever for any damages of any nature whatsoever that may result from or may be caused in any way by the use of the maps and associated data.





**US Army Corps
of Engineers®**

RM 12 R Sister

1:38,000

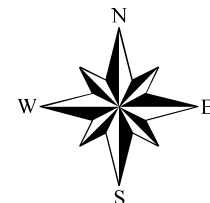
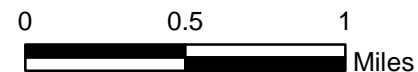
Distance to gage: 8 miles

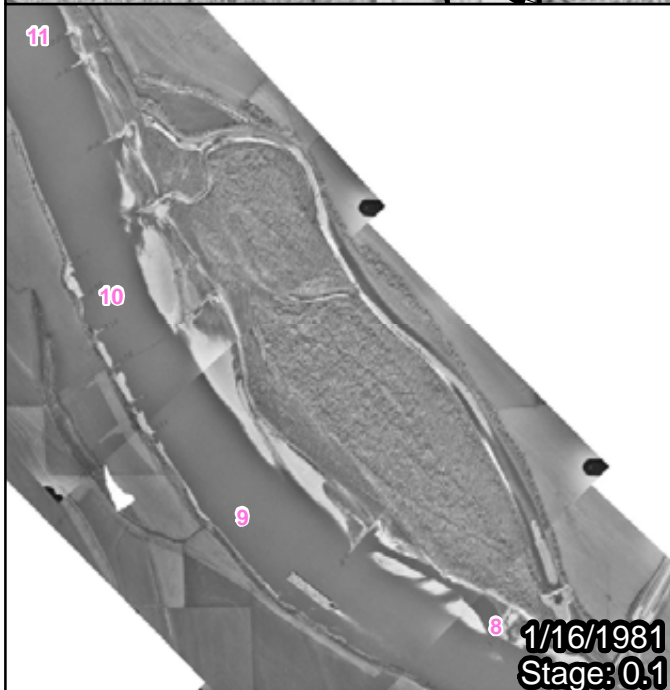
Created by: Erin Marks Guntren
Date Created: 07August2012

Filepath: \\mvs-netapp2\gis\GIS\MVD\LMR_Sec_Channel_2000\MMR_Side_Channel_Study\maps

DISCLAIMER - While the United States Army Corps of Engineers, (hereinafter referred to as USACE) has made a reasonable effort to insure the accuracy of the maps and associated data, its should be explicitly noted that USACE makes no warranty, representation or guaranty, either express or implied, as to the content, sequence, accuracy, timeliness or completeness of any of the data provided herein. The USACE, its officers, agents, employees, or servants shall assume no liability of any nature for any errors, omissions, or inaccuracies in the information provided regardless of how caused. The USACE, its officers, agents, employees or servants

shall assume no liability for any decisions made or actions taken or not taken by the user of the maps and associated data in reliance upon any information or data furnished here. By using these maps and associated data the user does so entirely at their own risk and explicitly acknowledges that he/she is aware of and agrees to be bound by this disclaimer and agrees not to present any claim or demand of any nature against the USACE, its officers, agents, employees or servants in any forum whatsoever for any damages of any nature whatsoever that may result from or may be caused in any way by the use of the maps and associated data.





**US Army Corps
of Engineers®**

RM 9 L Boston

1:45,000

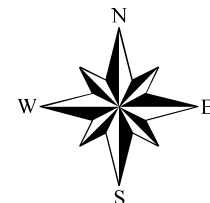
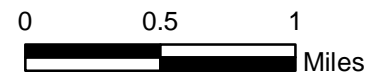
Distance to gage: 7 miles

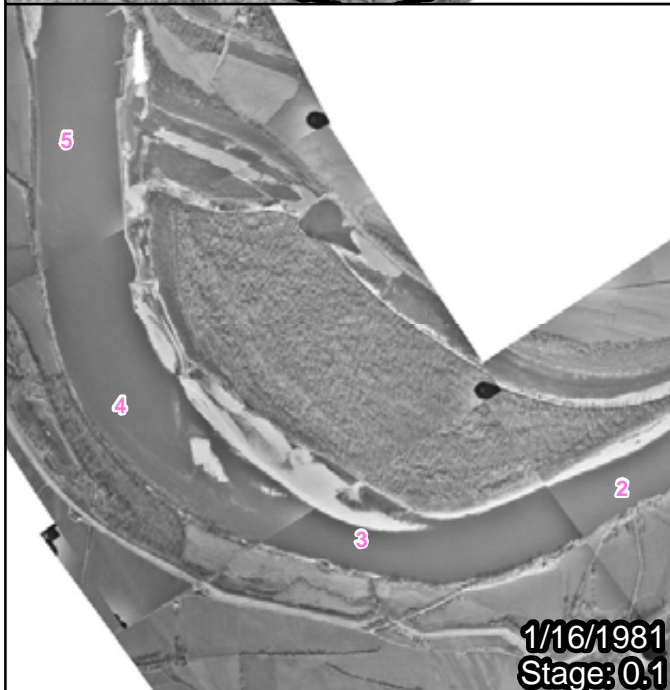
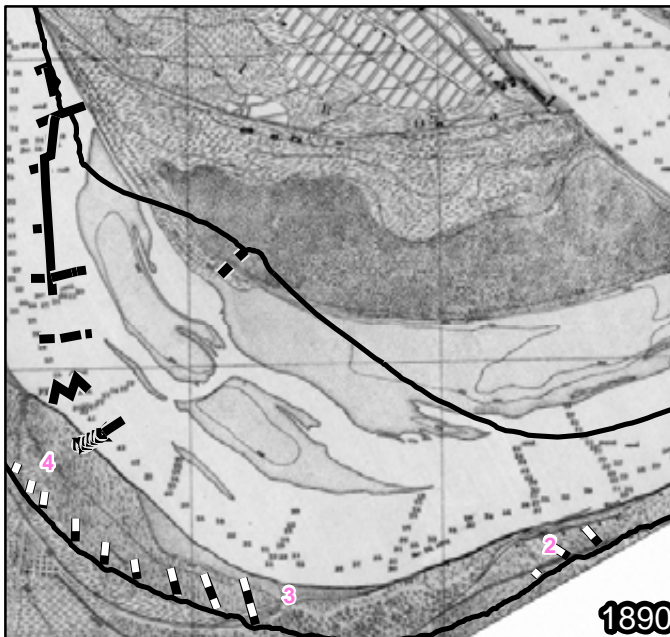
Created by: Erin Marks Guntren
Date Created: 07August2012

Filepath: \\mvs-netapp2\gis\Gis\MVD\LMR_Sec_Channel_2000\MMR_Side_Channel_Study\maps

DISCLAIMER - While the United States Army Corps of Engineers, (hereinafter referred to as USACE) has made a reasonable effort to insure the accuracy of the maps and associated data, it should be explicitly noted that USACE makes no warranty, representation or guaranty, either express or implied, as to the content, sequence, accuracy, timeliness or completeness of any of the data provided herein. The USACE, its officers, agents, employees, or servants shall assume no liability of any nature for any errors, omissions, or inaccuracies in the information provided regardless of how caused. The USACE, its officers, agents, employees or servants

shall assume no liability for any decisions made or actions taken or not taken by the user of the maps and associated data in reliance upon any information or data furnished here. By using these maps and associated data the user does so entirely at their own risk and explicitly acknowledges that he/she is aware of and agrees to be bound by this disclaimer and agrees not to present any claim or demand of any nature against the USACE, its officers, agents, employees or servants in any forum whatsoever for any damages of any nature whatsoever that may result from or may be caused in any way by the use of the maps and associated data.





**US Army Corps
of Engineers**

RM 3 L Angelo

1:45,000

Distance to gage: 2 miles

Created by: Erin Marks Guntren
Date Created: 17 February 2012

Filepath: \\mvs-netapp2\gis\Gis\MVD\LMR_Sec_Channel_2000\MMR_Side_Channel_Study\maps

DISCLAIMER - While the United States Army Corps of Engineers, (hereinafter referred to as USACE) has made a reasonable effort to insure the accuracy of the maps and associated data, it should be explicitly noted that USACE makes no warranty, representation or guaranty, either express or implied, as to the content, sequence, accuracy, timeliness or completeness of any of the data provided herein. The USACE, its officers, agents, employees, or servants shall assume no liability of any nature for any errors, omissions, or inaccuracies in the information provided regardless of how caused. The USACE, its officers, agents, employees or servants

shall assume no liability for any decisions made or actions taken or not taken by the user of the maps and associated data in reliance upon any information or data furnished here. By using these maps and associated data the user does so entirely at their own risk and explicitly acknowledges that he/she is aware of and agrees to be bound by this disclaimer and agrees not to present any claim or demand of any nature against the USACE, its officers, agents, employees or servants in any forum whatsoever for any damages of any nature whatsoever that may result from or may be caused in any way by the use of the maps and associated data.

