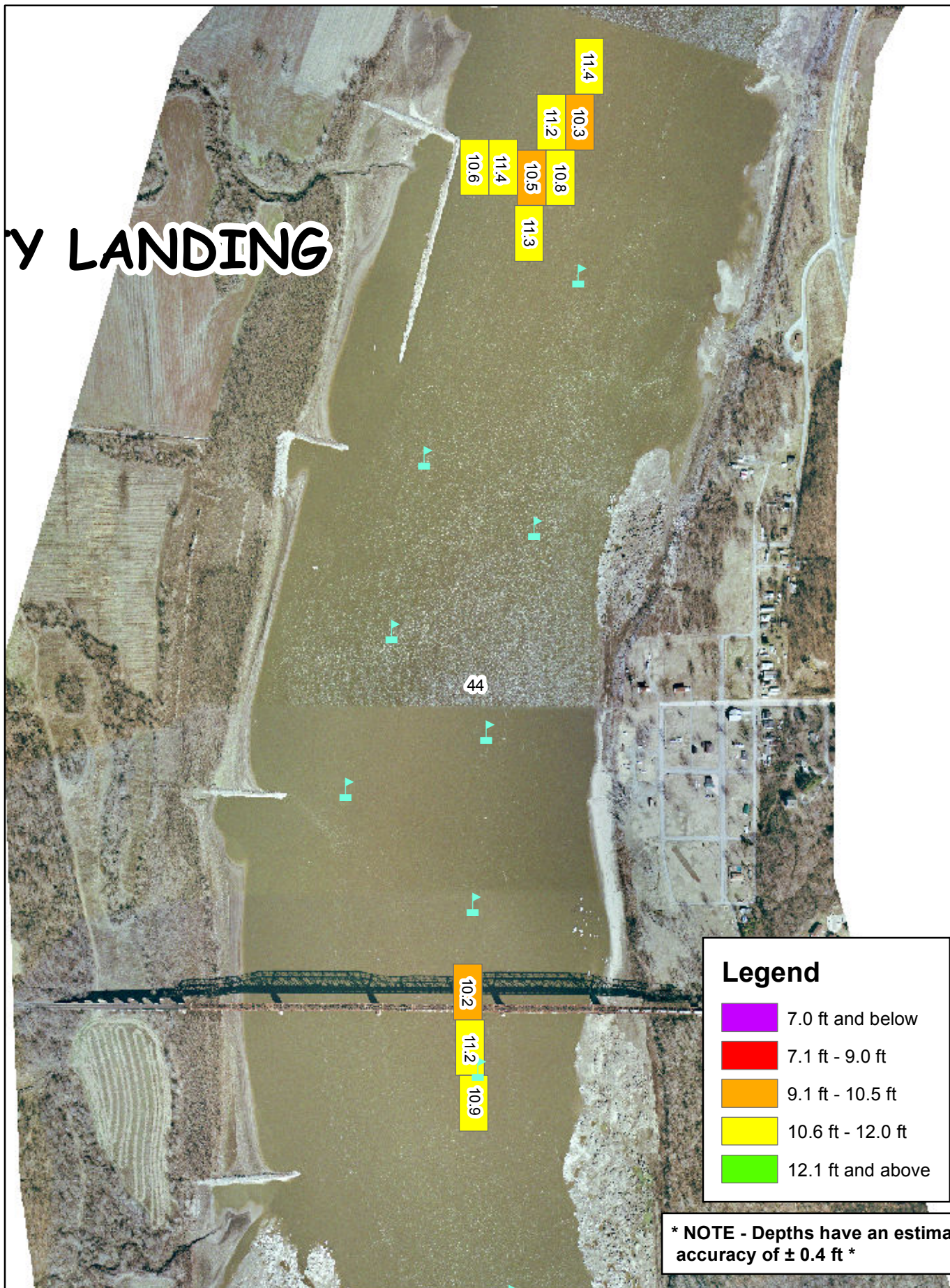
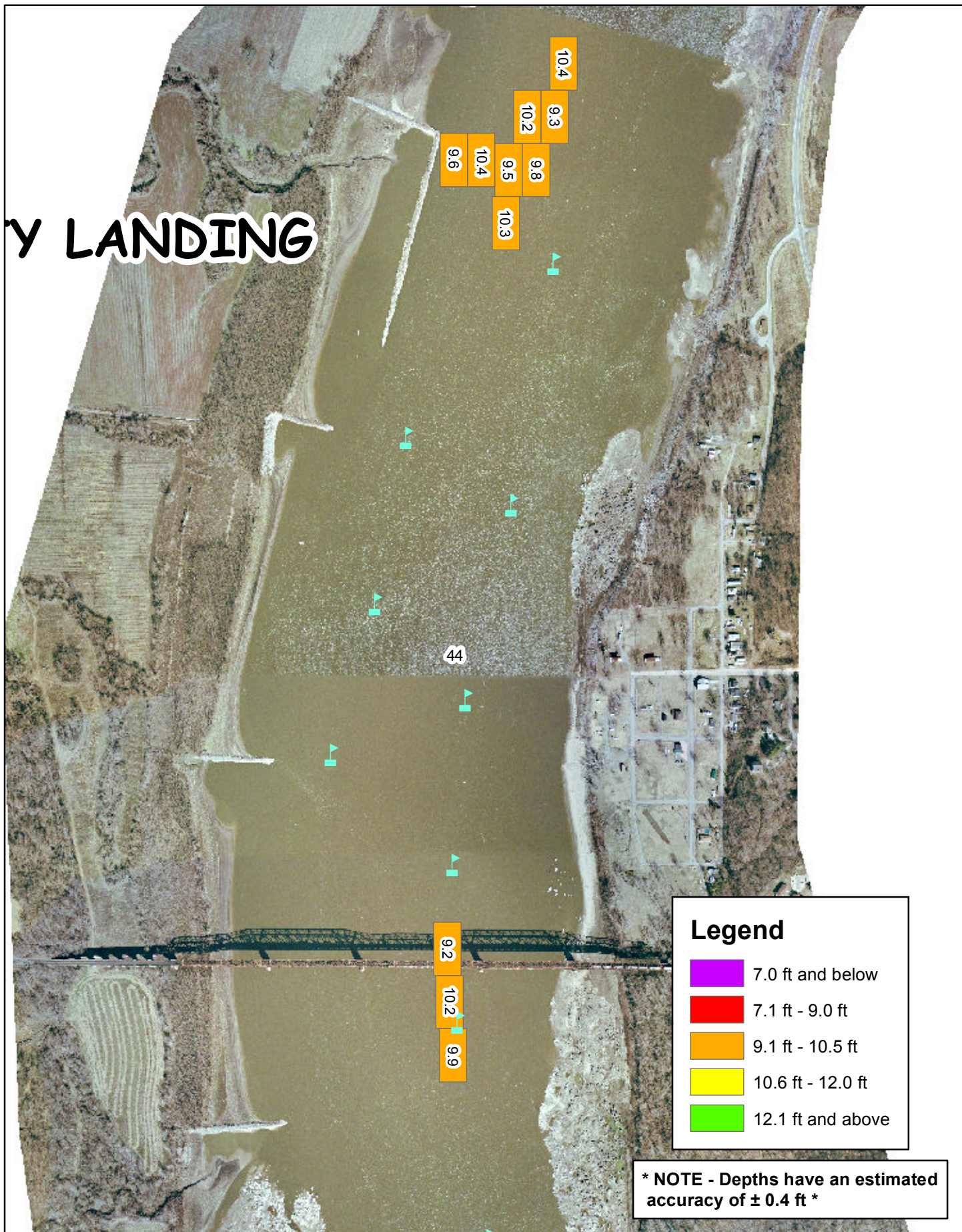


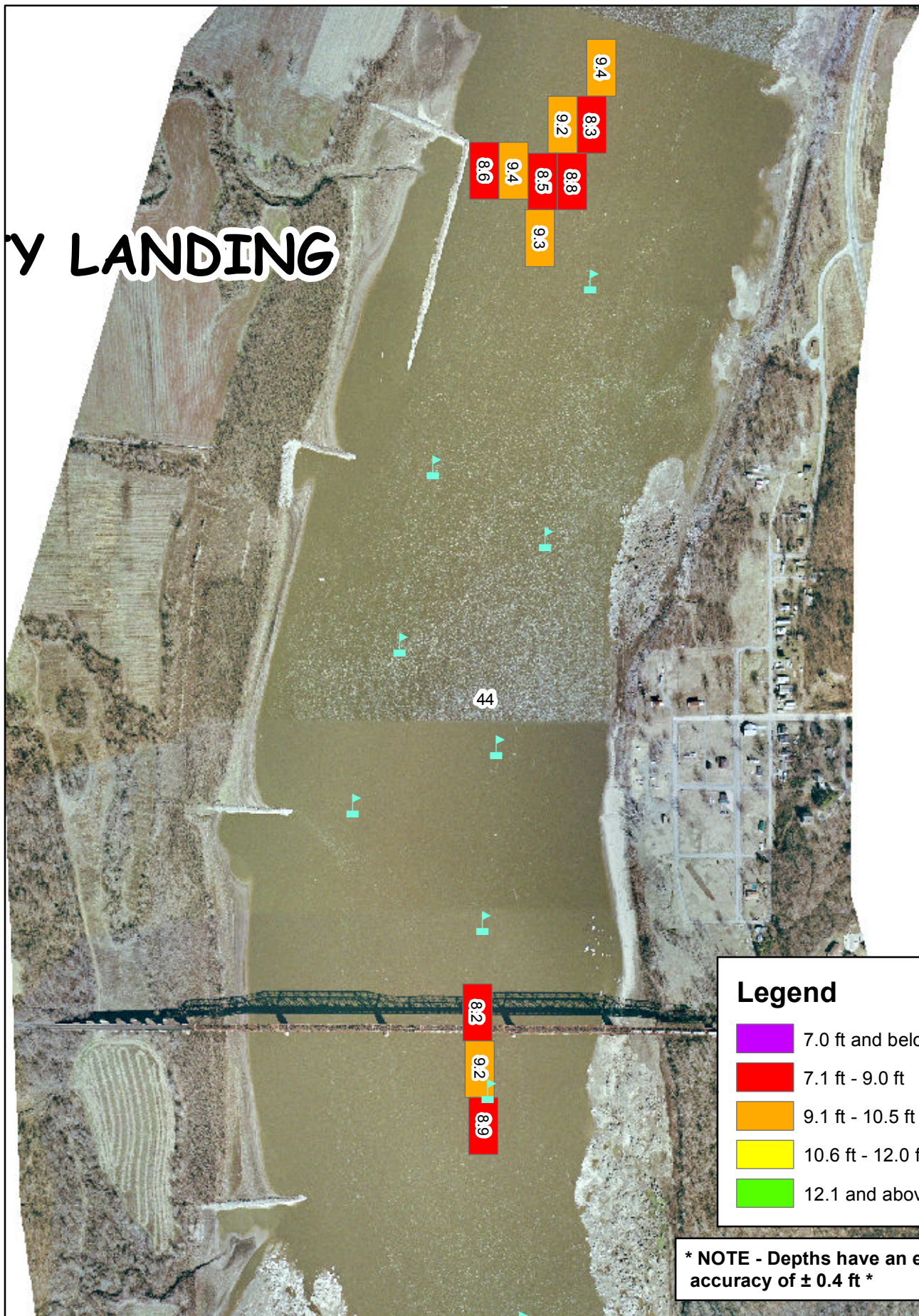
Y LANDING



Y LANDING



Y LANDING



Legend

- 7.0 ft and below
- 7.1 ft - 9.0 ft
- 9.1 ft - 10.5 ft
- 10.6 ft - 12.0 ft
- 12.1 and above

* NOTE - Depths have an estimated accuracy of ± 0.4 ft *

PLATE
NUMBER

7

0 300 600 1,200 Feet

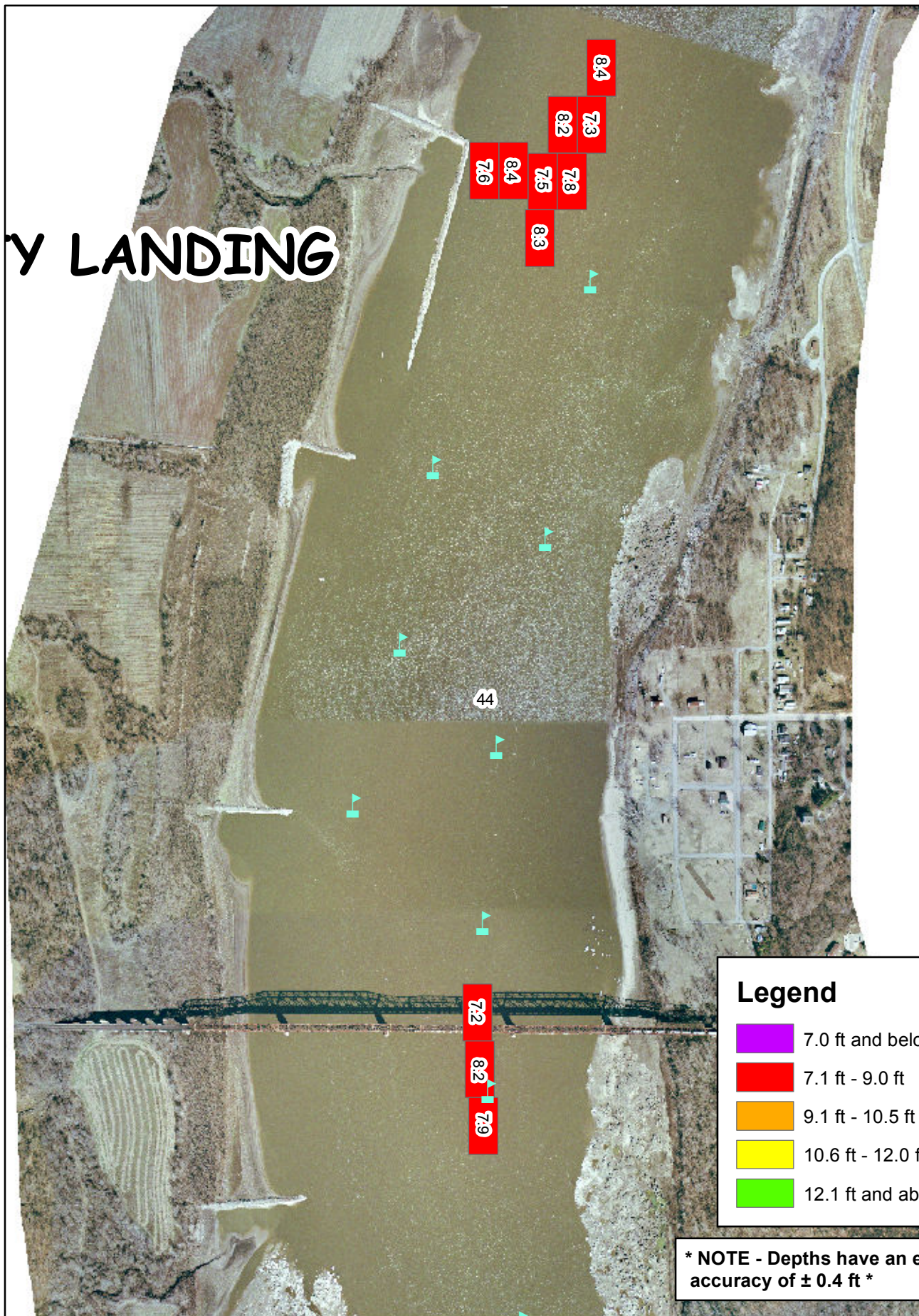
MISSISSIPPI RIVER
RIVER MILES 46-39 2006 Survey 2006 Aerial

DEPTH MAPS FOR THEBES = 1.0 FT

U.S. Army Corps of Engineers
St. Louis District



Y LANDING



Legend

- 7.0 ft and below
- 7.1 ft - 9.0 ft
- 9.1 ft - 10.5 ft
- 10.6 ft - 12.0 ft
- 12.1 ft and above

*** NOTE - Depths have an estimated accuracy of ± 0.4 ft ***

PLATE
NUMBER

8

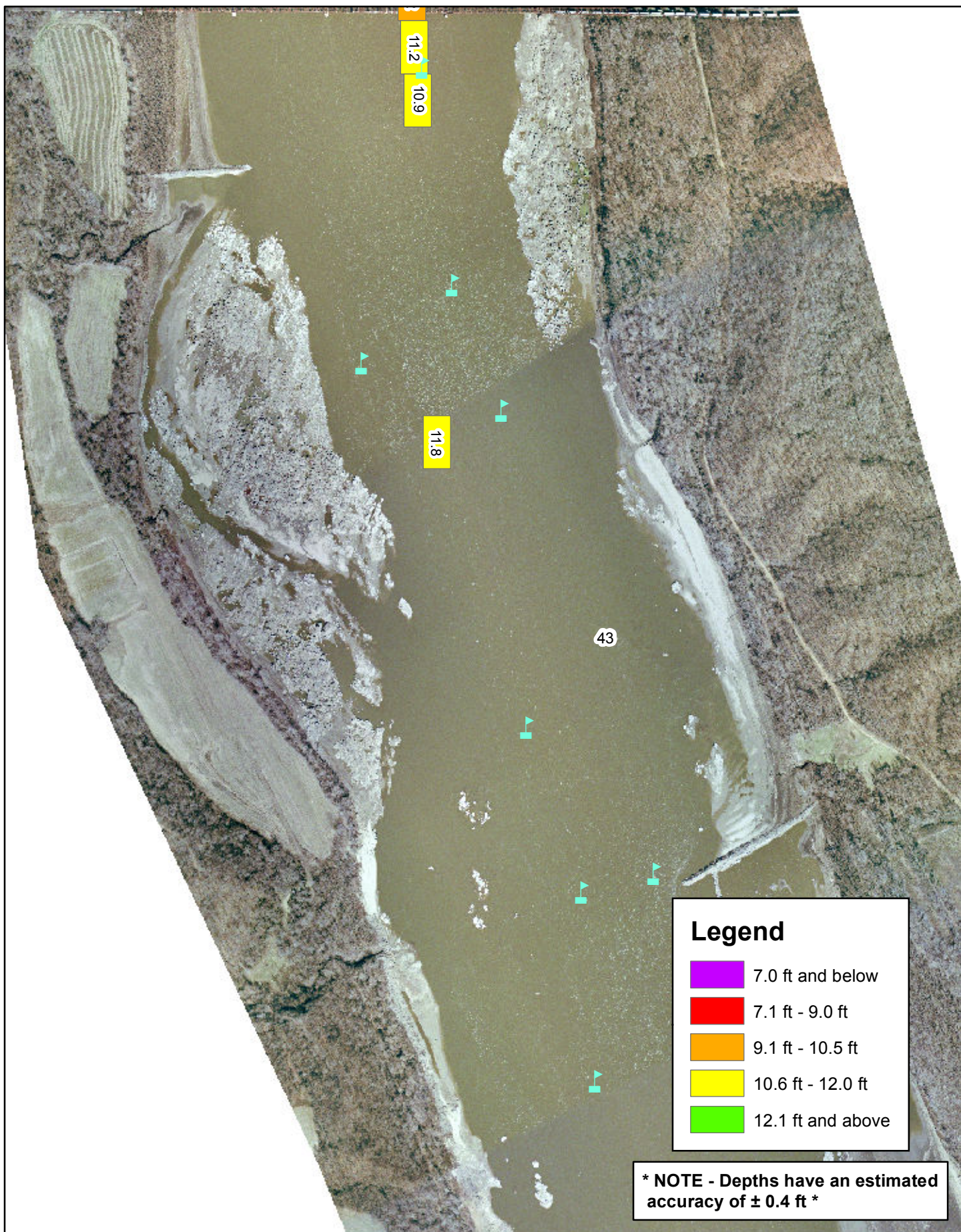
0 300 600 1,200
Feet

MISSISSIPPI RIVER
RIVER MILES 46-39 2006 Survey 2006 Aerial

DEPTH MAPS FOR THEBES = 0.0 FT

U.S. Army Corps of Engineers
St. Louis District





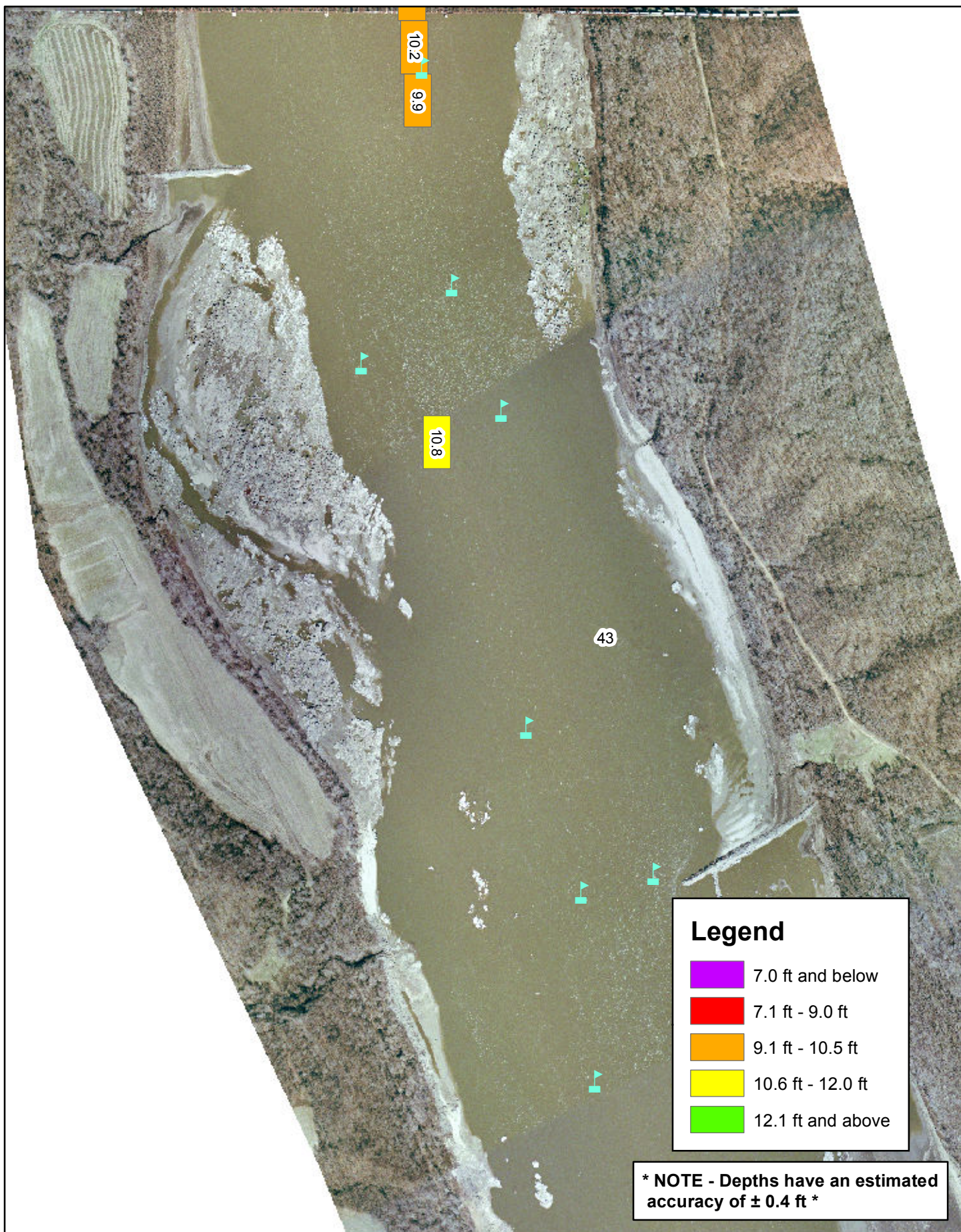
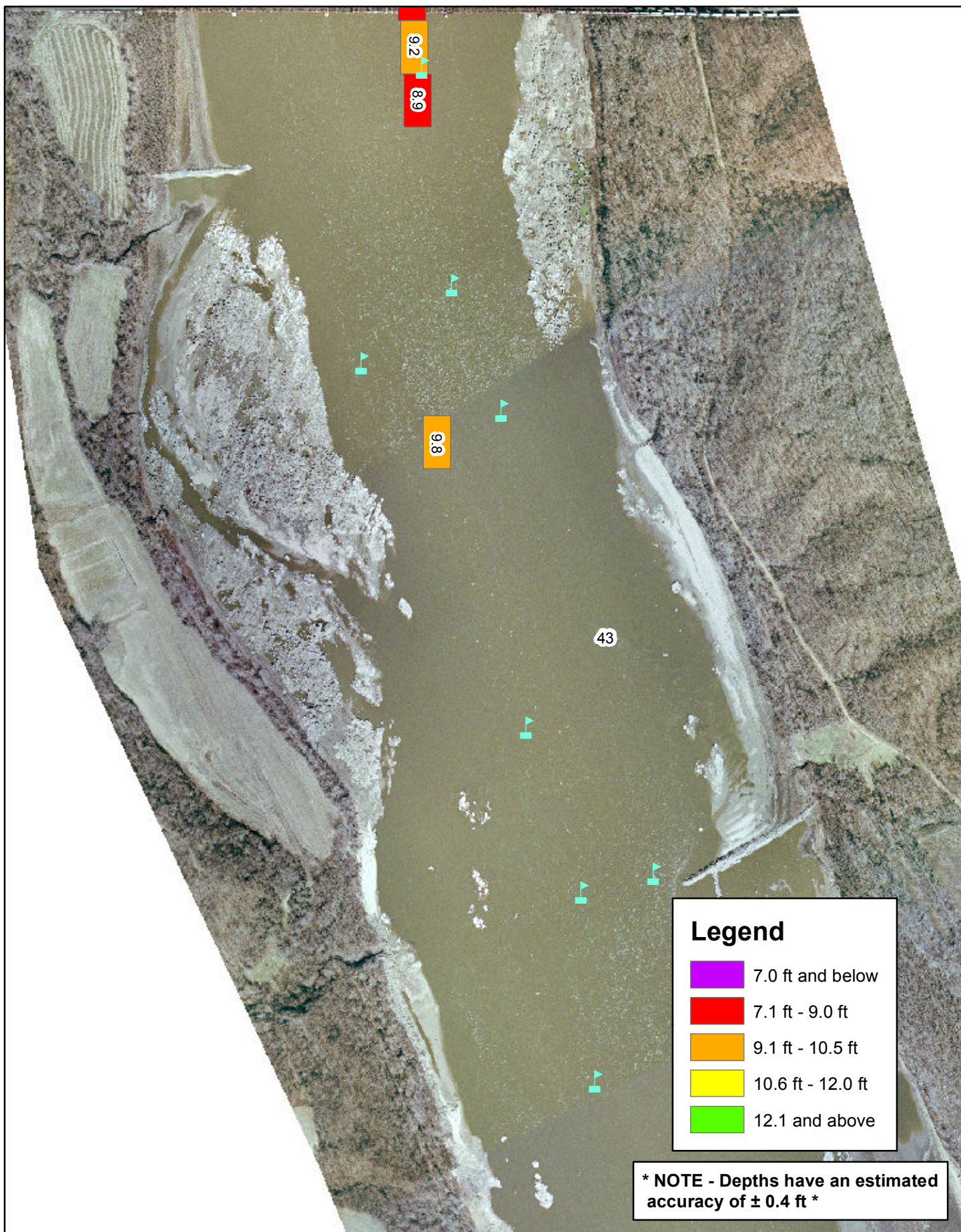


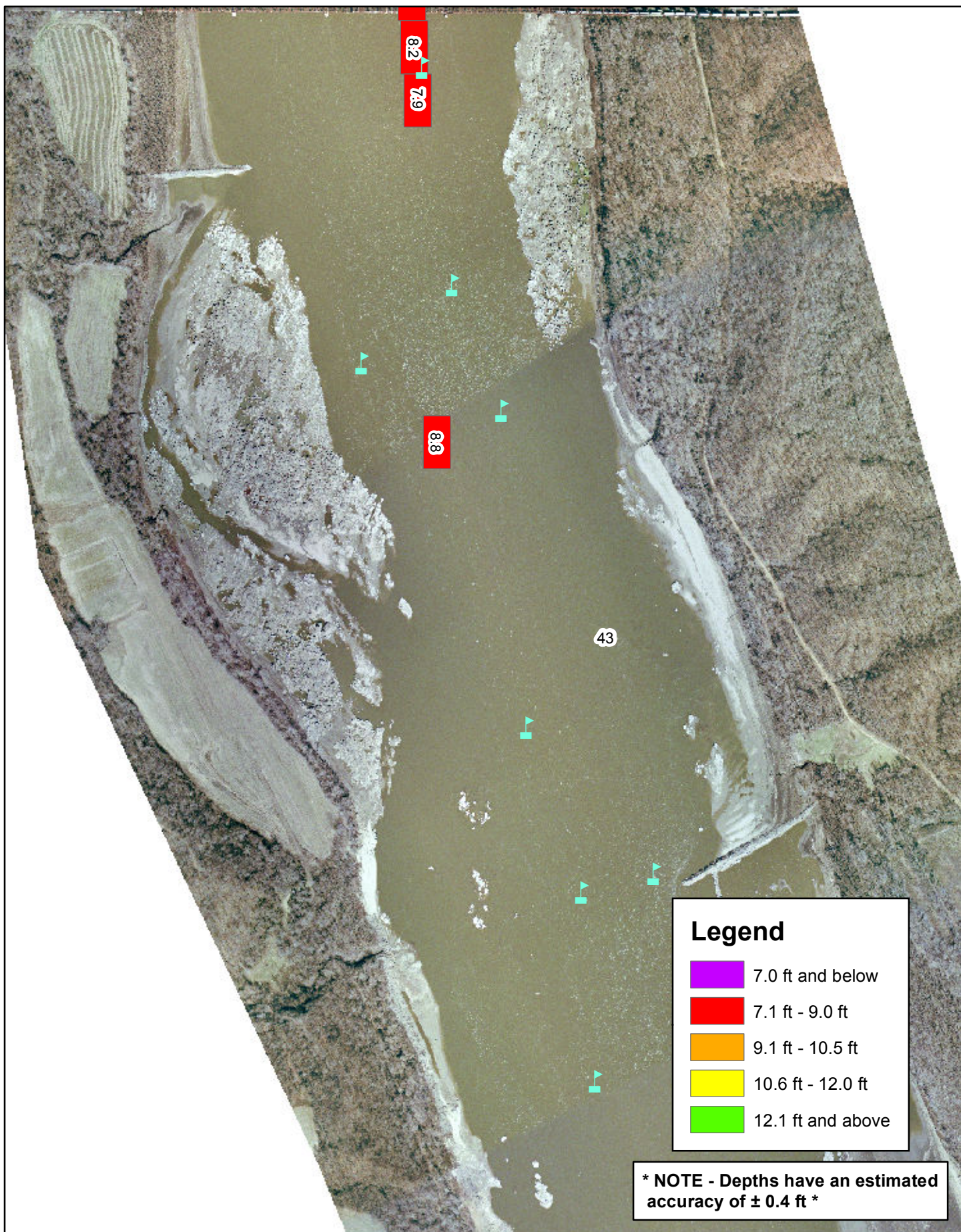
PLATE
NUMBER
10

0 300 600 1,200 Feet
MISSISSIPPI RIVER
RIVER MILES 46-39 2006 Survey 2006 Aerial
DEPTH MAPS FOR THEBES = 2.0 FT

U.S. Army Corps of Engineers
St. Louis District







Legend

- 7.0 ft and below
- 7.1 ft - 9.0 ft
- 9.1 ft - 10.5 ft
- 10.6 ft - 12.0 ft
- 12.1 ft and above

* NOTE - Depths have an estimated accuracy of ± 0.4 ft *

PLATE
NUMBER

12

0 300 600 1,200
Feet

MISSISSIPPI RIVER
RIVER MILES 46-39 2006 Survey 2006 Aerial

DEPTH MAPS FOR THEBES = 0.0 FT

U.S. Army Corps of Engineers
St. Louis District



