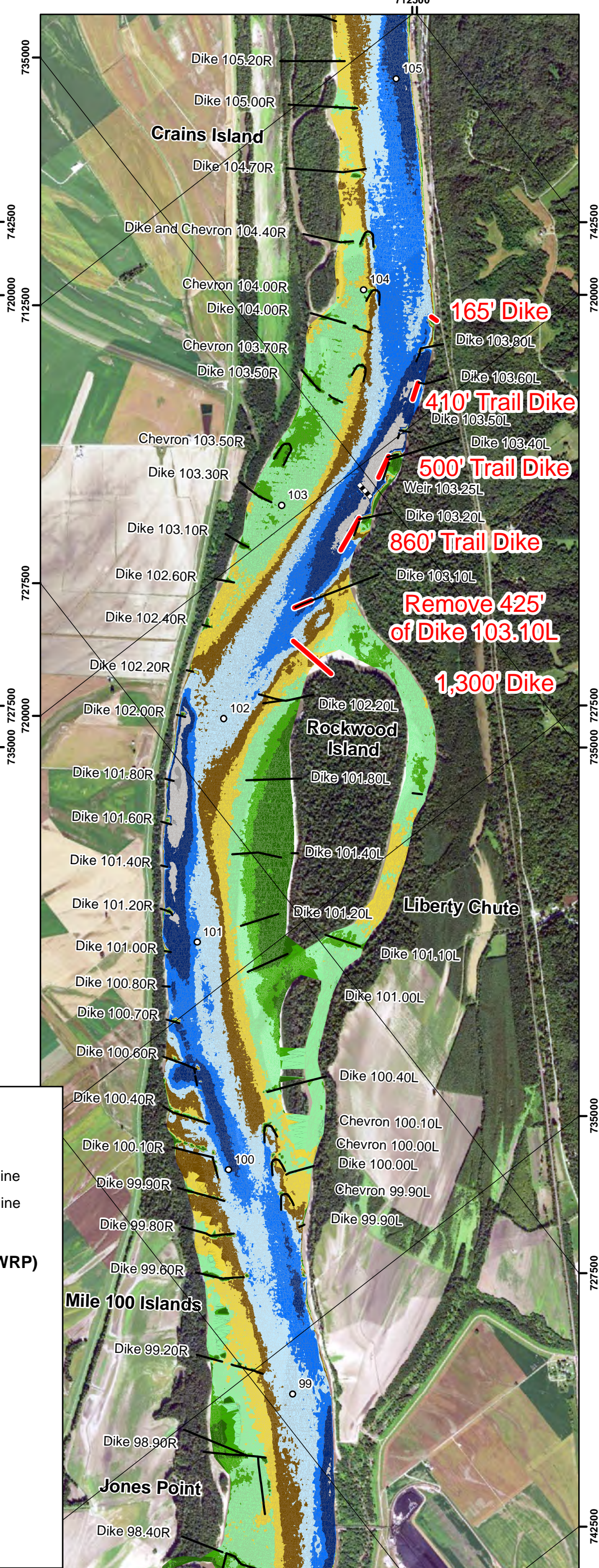
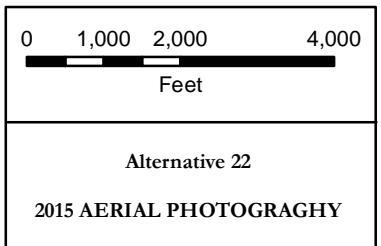


# Replication



# Alternative 22

PLATE  
NUMBER  
**42**



U.S. ARMY ENGINEER DIVISION  
CORPS OF ENGINEERS  
ST. LOUIS, MISSOURI

Mississippi River Basin  
St. Louis District  
UMR 104 - 101.5  
HSR Model

DESIGNED BY: J. Brown, P.E.		
DRAWN BY: C. Tabbert	REVIEWED BY: B. Krischel, P.E.	CHECKED BY: D. Gordon, P.E.
SUBMITTED: C. Tabbert	APPROVED: Dave Gordon, P.E.	
FILE NAME: L/HSR Modeling/HSR Model Studies/UMR 110-90		

