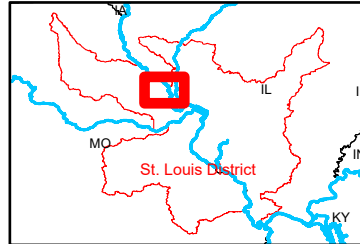
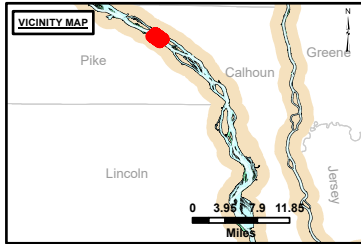


DISCLAIMER: The United States Government furnishes this information as a service to the public and does not warrant its accuracy, completeness, or timeliness. The user shall be responsible for verifying the accuracy, completeness, and timeliness of the information and for its use. The user shall be responsible for obtaining any necessary permits or clearances for the use of this information. The United States Government shall not be liable for any damages, including consequential damages, arising from the use of this information. The user shall be responsible for obtaining any necessary permits or clearances for the use of this information. The United States Government shall not be liable for any damages, including consequential damages, arising from the use of this information.

U.S. ARMY CORPS OF ENGINEERS		
Surveyed By:	Plotted By:	Checked By:

Survey Information
 POOL_25_UPPER_MISSISSIPPI
 UM_SL_P25_20241015_AD_1
 15 October 2024



LAYERS

- River Mile
- Sailing Line
- 9' below Minimum Pool
- 12' below Minimum Pool
- 14' below Minimum Pool

Depths shown are below Minimum Pool

Aids to Navigation

- Green
- Red
- Junction
- Green Buoy
- Red Buoy

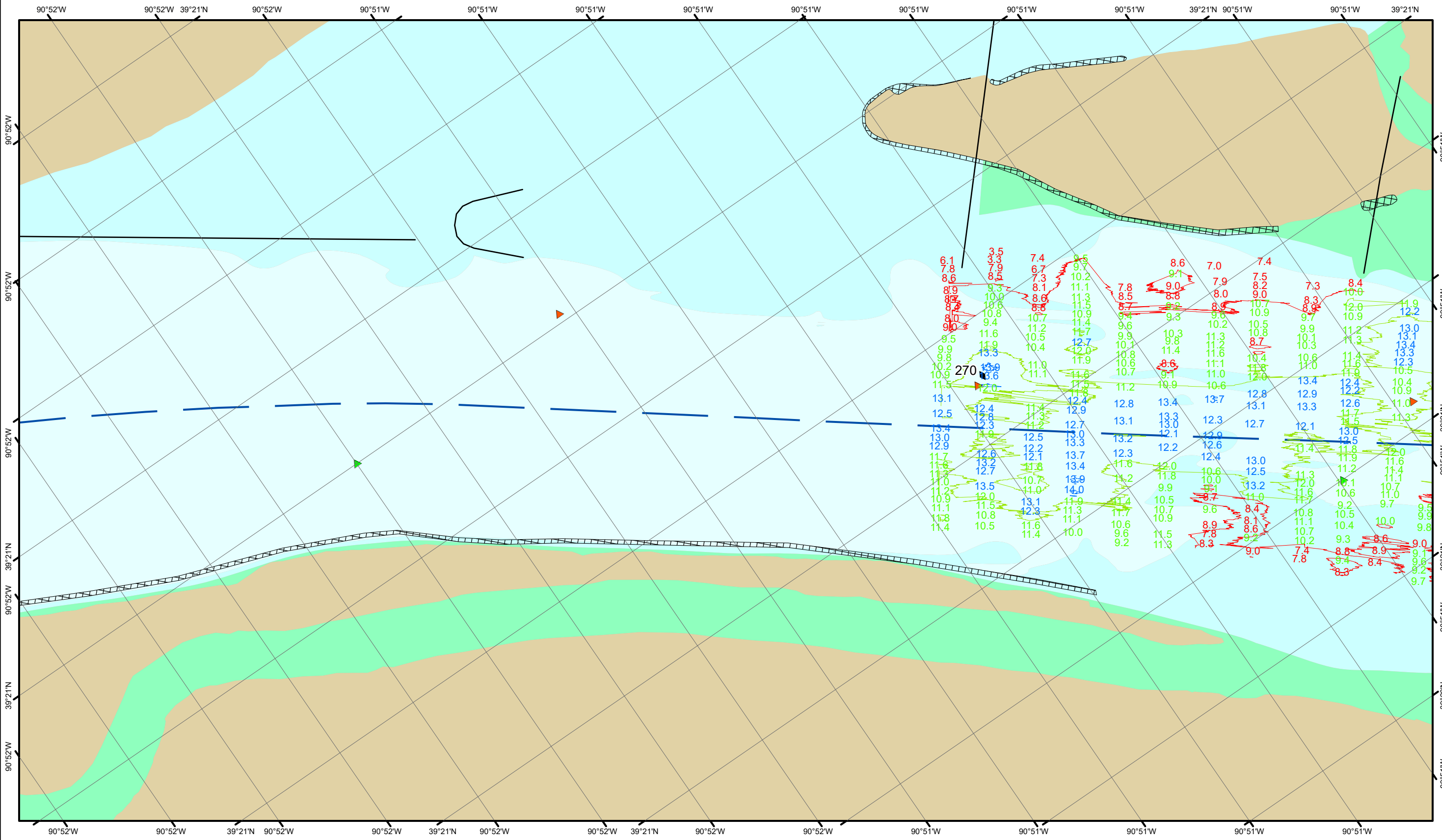
Training Structure

- Revetment
- Tower/Power Poles
- Electrical Lines
- Fiber Optic Lines
- Pipelines

Feet
0 250 500 750 1,000

NOTES:
 Horizontal Coordinate System:
 North American Datum of 1983 (NAD83), projected to the State Plane Coordinate System (SPCS), Missouri East Zone. Distance units in U.S. Survey Feet.
 Vertical Datum:
 Soundings are shown in feet and indicate depths below the Minimum Pool.
 The information depicted on this map represents the results of a survey conducted on the date indicated and can only be considered to represent the general condition existing at that time.
 The location of navigation aids are based on and provided by the U.S. Coast Guard.

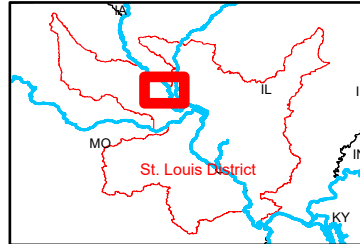
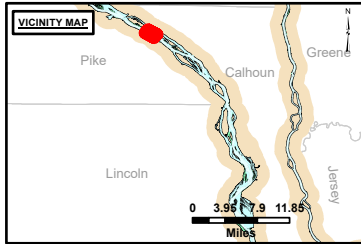
Reach Number
 36 of 41



DISCLAIMER: The United States Government furnishes this information as a service to the public and does not warrant its accuracy, completeness, or timeliness. The user shall be responsible for the proper use of this information and shall assume all liability for any errors or omissions. The user shall be held harmless for any damage or loss resulting from the use of this information. The United States Government shall not be liable for any damage or loss resulting from the use of this information. The user shall be held harmless for any damage or loss resulting from the use of this information. The United States Government shall not be liable for any damage or loss resulting from the use of this information.

Surveyed By:	Plotted By:	Checked By:

Survey Information
 POOL_25_UPPER_MISSISSIPPI
 UM_SL_P25_20241015_AD_1
 15 October 2024



LAYERS

- River Mile
- Sailing Line
- 9' below Minimum Pool
- 12' below Minimum Pool
- 14' below Minimum Pool

Depths shown are below Minimum Pool

Aids to Navigation

- Green
- Red
- Junction
- Green Buoy
- Red Buoy

Training Structure

- Revetment
- Tower/Power Poles
- Electrical Lines
- Fiber Optic Lines
- Pipelines

Feet
0 250 500 750 1,000

NOTES:
 Horizontal Coordinate System:
 North American Datum of 1983 (NAD83), projected to the State Plane Coordinate System (SPCS), Missouri East Zone. Distance units in U.S. Survey Feet.
 Vertical Datum:
 Soundings are shown in feet and indicate depths below the Minimum Pool.
 The information depicted on this map represents the results of a survey conducted on the date indicated and can only be considered to represent the general condition existing at that time.
 The location of navigation aids are based on and provided by the U.S. Coast Guard.

Reach Number
 37 of 41