

LAYERS

- River Mile
- Sailing Line
- 9' below Minimum Pool
- 12' below Minimum Pool
- 14' below Minimum Pool

Depths shown are below Minimum Pool

Aids to Navigation

- Green
- Red
- Junction
- Green Buoy
- Red Buoy

Structures

- Training Structure
- Revetment
- Tower/Power Poles
- Electrical Lines
- Fiber Optic Lines
- Pipelines

Scale: 0, 250, 500, 750, 1,000 Feet

NOTES:
 Horizontal Coordinate System:
 North American Datum of 1983 (NAD83), projected to the State Plane Coordinate System (SPCS), Missouri East Zone. Distance units in U.S. Survey Feet.
 Vertical Datum:
 Soundings are shown in feet and indicate depths below the Minimum Pool.
 The information depicted on this map represents the results of a survey conducted on the date indicated and can only be considered to represent the general condition existing at that time.
 The location of navigation aids are based on and provided by the U.S. Coast Guard.

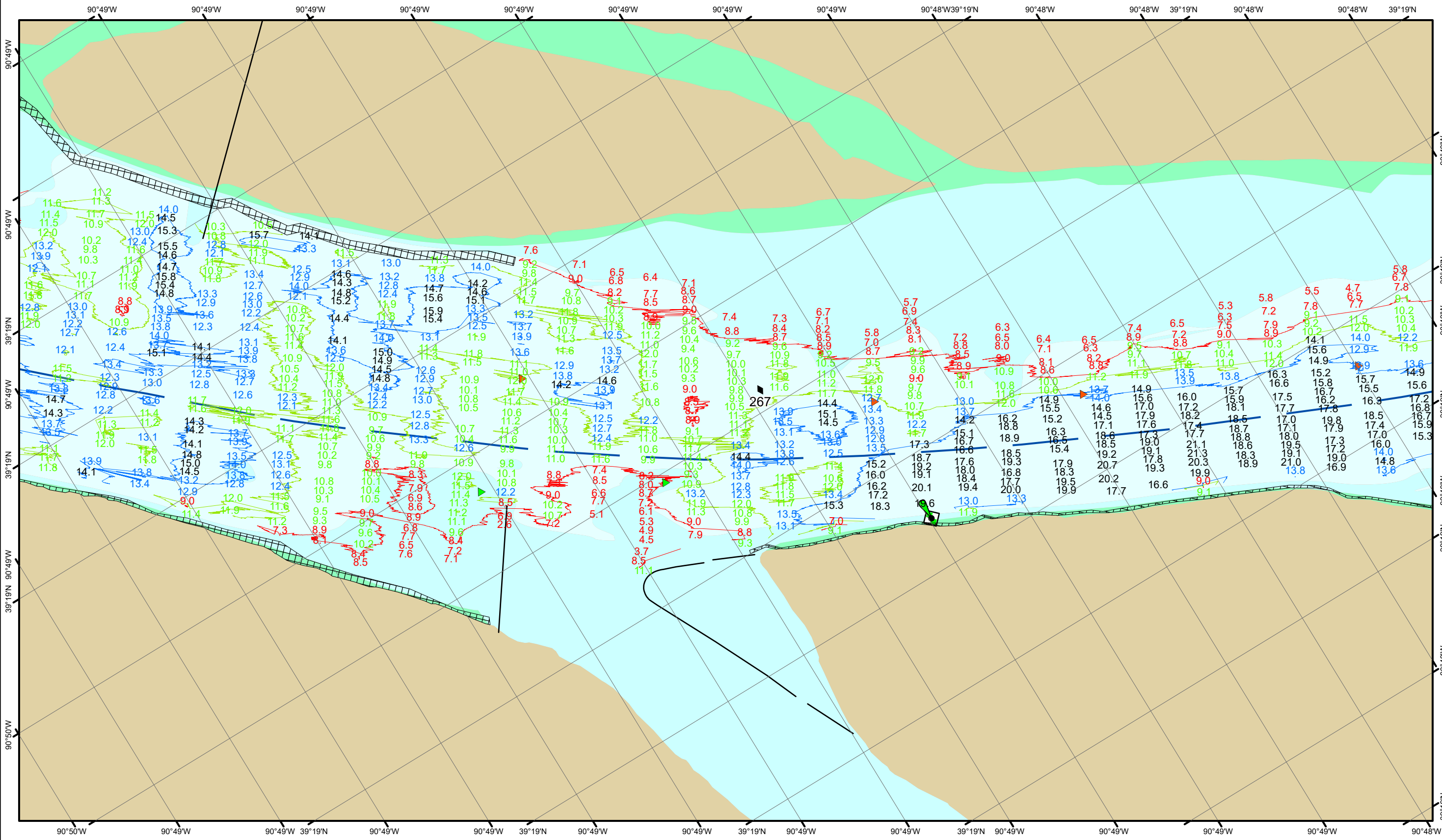


DISCLAIMER: The United States Government Lend Lease Act, 40 U.S.C. 3161, authorizes the distribution of this information for use by other agencies of the Federal Government. The data represents the results of data collection and processing by a specific US Army Corps of Engineers project. The data is not intended for navigation purposes. It is not to be used for any purpose other than that for which it was collected. The user assumes all liability for any use of the information other than that for which it was collected. The user assumes all liability for any use of the information other than that for which it was collected.

U.S. ARMY CORPS OF ENGINEERS		
Surveyed By:	Plotted By:	Checked By:

Survey Information
 POOL_25_UPPER_MISSISSIPPI
 UM_SL_P25_20241001_BD_1
 01 October 2024

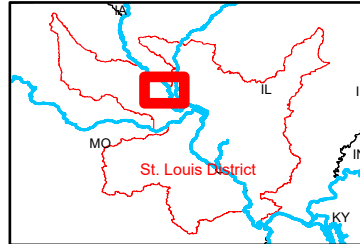
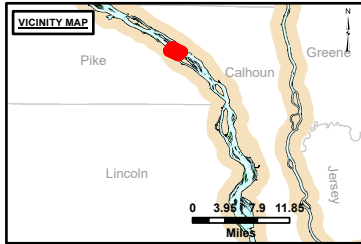
Reach Number
 32 of 41



DISCLAIMER: The United States Government Lenders and/or guarantors of the U.S. Army Corps of Engineers. The data presented in this chart is for informational purposes only and is not intended to be used for any other purpose. The user assumes all liability for any use of the information presented in this chart. The U.S. Army Corps of Engineers does not warrant the accuracy, completeness, or timeliness of the information presented in this chart. The U.S. Army Corps of Engineers is not responsible for any errors or omissions in this chart. The user assumes all liability for any use of the information presented in this chart. The U.S. Army Corps of Engineers does not warrant the accuracy, completeness, or timeliness of the information presented in this chart. The U.S. Army Corps of Engineers is not responsible for any errors or omissions in this chart.

U.S. ARMY CORPS OF ENGINEERS		
Surveyed By:	Plotted By:	Checked By:

Survey Information
 POOL_25_UPPER_MISSISSIPPI
 UM_SL_P25_20241001_BD_1
 01 October 2024



LAYERS

- River Mile
- Sailing Line
- 9' below Minimum Pool
- 12' below Minimum Pool
- 14' below Minimum Pool

Depths shown are below Minimum Pool

Aids to Navigation

- Green
- Red
- Junction
- Green Buoy
- Red Buoy

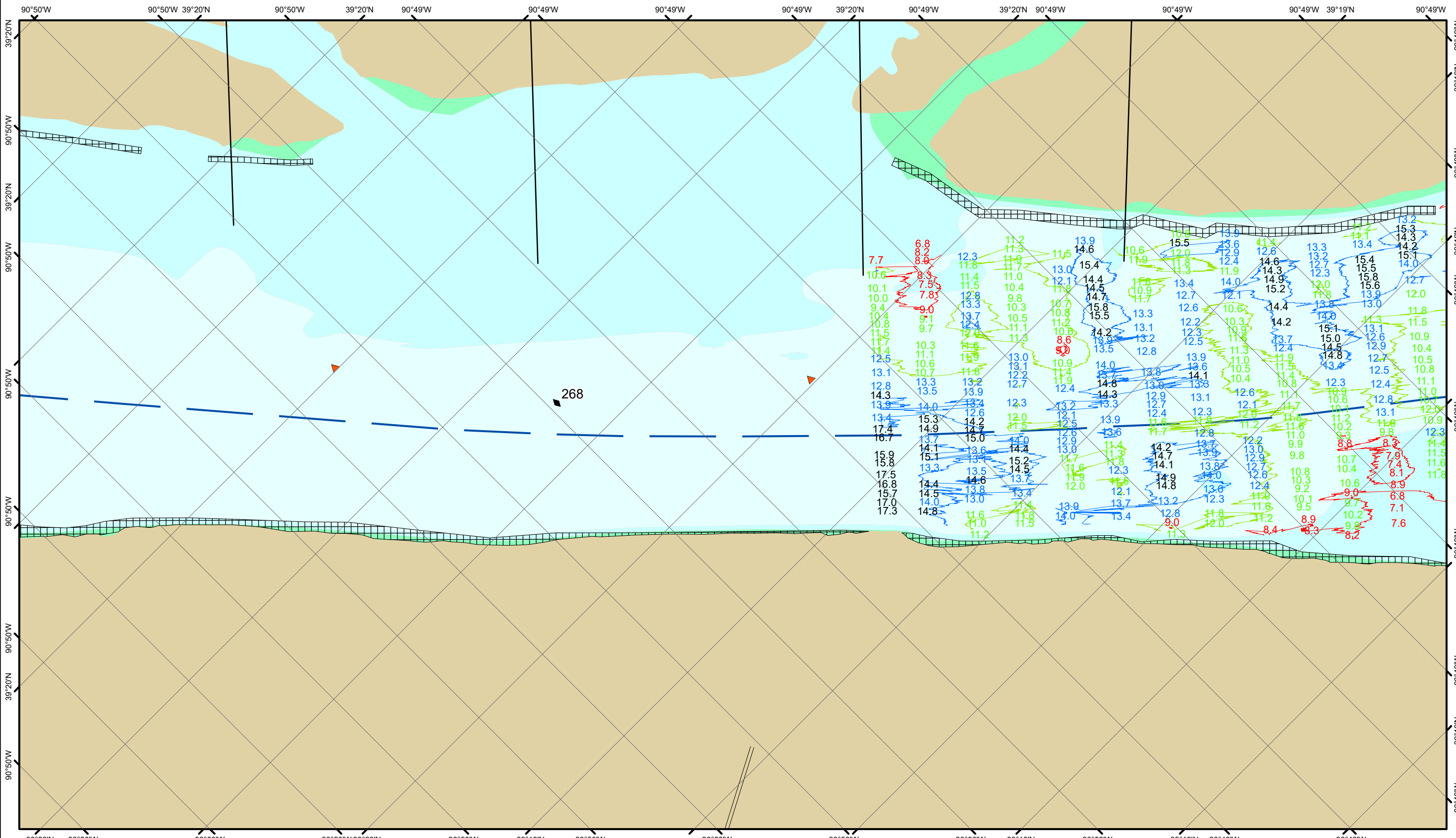
Infrastructure

- Training Structure
- Revetment
- Tower/Power Poles
- Electrical Lines
- Fiber Optic Lines
- Pipelines

Feet
0 250 500 750 1,000

NOTES:
 Horizontal Coordinate System:
 North American Datum of 1983 (NAD83), projected to the State Plane Coordinate System (SPCS), Missouri East Zone. Distance units in U.S. Survey Feet.
 Vertical Datum:
 Soundings are shown in feet and indicate depths below the Minimum Pool.
 The information depicted on this map represents the results of a survey conducted on the date indicated and can only be considered to represent the general condition existing at that time.
 The location of navigation aids are based on and provided by the U.S. Coast Guard.

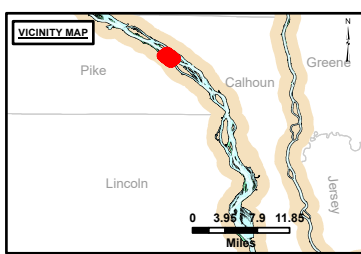
Reach Number
 33 of 41



DISCLAIMER: The United States Government furnishes this information as a service to the public and does not warrant its accuracy, completeness, or timeliness. The user shall be responsible for the use of this information and shall indemnify and hold the United States Government harmless from any and all claims, damages, and expenses, including reasonable attorneys' fees, that may be incurred by the user in connection with the use of this information. This information is provided for informational purposes only and is not to be used for navigation or other purposes. The user shall be responsible for the use of this information and shall indemnify and hold the United States Government harmless from any and all claims, damages, and expenses, including reasonable attorneys' fees, that may be incurred by the user in connection with the use of this information.

Surveyed By:	Plotted By:	Checked By:

Survey Information
 POOL_25_UPPER_MISSISSIPPI
 UM_SL_P25_20241001_BD_1
 01 October 2024



LAYERS

- River Mile
- Sailing Line
- 9' below Minimum Pool
- 12' below Minimum Pool
- 14' below Minimum Pool

Depths shown are below Minimum Pool

Aids to Navigation

- Green
- Red
- Junction
- Green Buoy
- Red Buoy

Training Structure

- Revetment
- Tower/Power Poles
- Electrical Lines
- Fiber Optic Lines
- Pipelines

Feet
0 250 500 750 1,000

NOTES:
 Horizontal Coordinate System:
 North American Datum of 1983 (NAD83), projected to the State Plane Coordinate System (SPCS), Missouri East Zone. Distance units in U.S. Survey Feet.
 Vertical Datum:
 Soundings are shown in feet and indicate depths below the Minimum Pool.
 The information depicted on this map represents the results of a survey conducted on the date indicated and can only be considered to represent the general condition existing at that time.
 The location of navigation aids are based on and provided by the U.S. Coast Guard.

Reach Number
 34 of 41