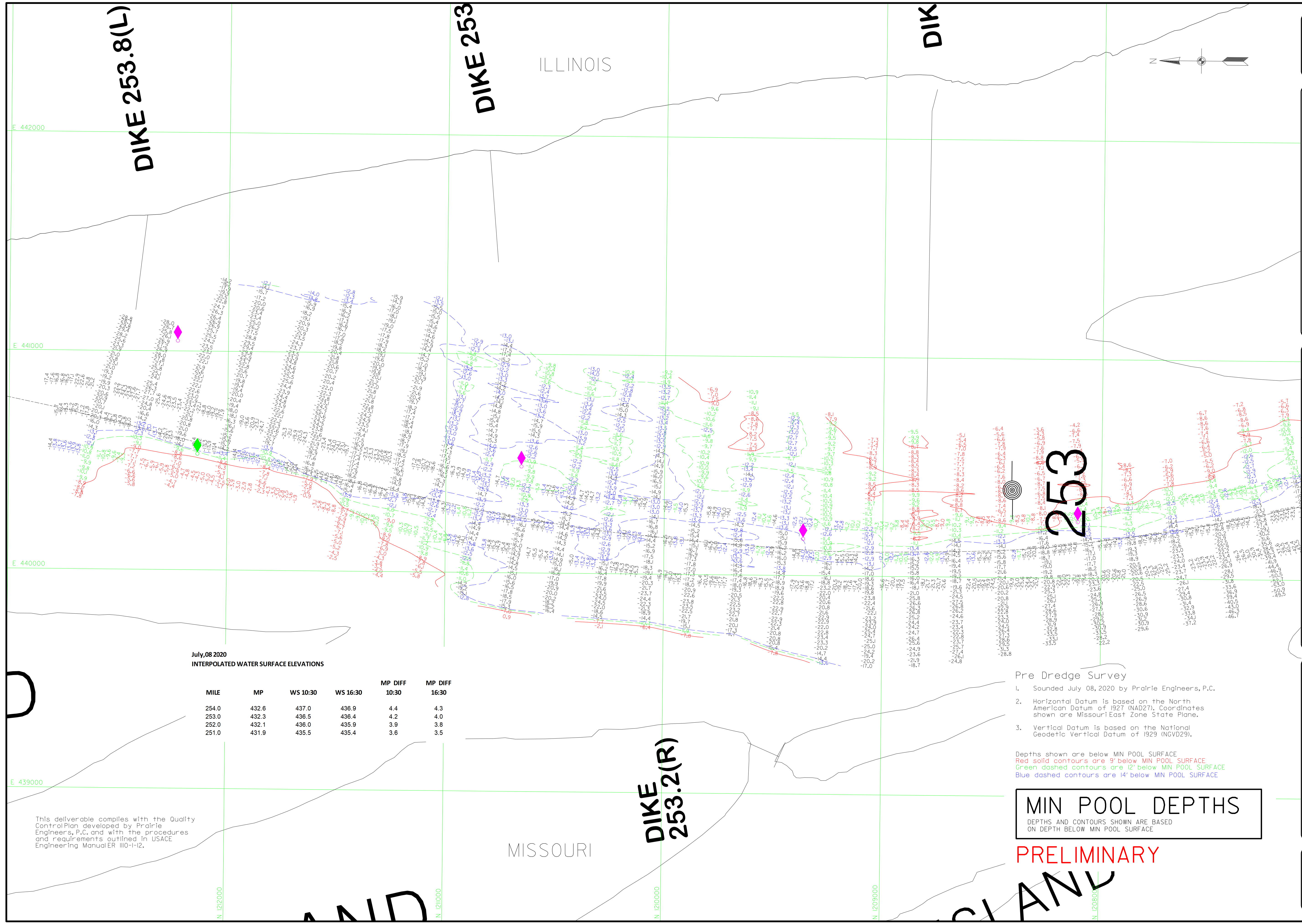


GAGE RECORD	
WATER SURFACE	MOSER
ZERO NGVD	400.0
MIN POOL	260.3
MILE	434.0
DATE	08 JUL 2020
FILE	402.2 (0330)
PROJECT	402.2 (0330)
DATE	402.2 (0330)
SCALE	402.2 (0330)

U.S. ARMY ENGINEER DIVISION CORPS OF ENGINEERS ST. LOUIS, MISSOURI		UPPER MISSISSIPPI RIVER BASIN MISSISSIPPI RIVER	
Survey Date: July 8, 2020	Submitted: Chief, Engr. Data Mgmt. Sect.	Drawn by: J.K.	Reviewed by: Chief, Geospatial Branch
Checked by: J.K.	Approved: Chief, Geospatial Branch	File: 20200820_Shr10Lgn	Plot Date: 7/16/2020
Plot Scale: 1"=200'			

0	200	400	600	800	1000
0	200	400	600	800	1000
THE INFORMATION ON THIS MAP REPRESENTS THE RESULTS OF A SURVEY CONDUCTED UNDER THE GENERAL CONDITIONS EXISTING AT THAT TIME.					
PRE DREDGE SURVEY MILE: 253.8-251.8					



July, 08 2020
INTERPOLATED WATER SURFACE ELEVATIONS

MILE	MP	WS 10:30	WS 16:30	MP DIFF 10:30	MP DIFF 16:30
254.0	432.6	437.0	436.9	4.4	4.3
253.0	432.3	436.5	436.4	4.2	4.0
252.0	432.1	436.0	435.9	3.9	3.8
251.0	431.9	435.5	435.4	3.6	3.5

- Pre Dredge Survey
- Sounded July 08, 2020 by Prairie Engineers, P.C.
 - Horizontal Datum is based on the North American Datum of 1927 (NAD27). Coordinates shown are Missouri East Zone State Plane.
 - Vertical Datum is based on the National Geodetic Vertical Datum of 1929 (NGVD29).
- Depths shown are below MIN POOL SURFACE
 Red solid contours are 9' below MIN POOL SURFACE
 Green dashed contours are 12' below MIN POOL SURFACE
 Blue dashed contours are 14' below MIN POOL SURFACE

MIN POOL DEPTHS
 DEPTHS AND CONTOURS SHOWN ARE BASED ON DEPTH BELOW MIN POOL SURFACE

PRELIMINARY

This deliverable complies with the Quality Control Plan developed by Prairie Engineers, P.C. and with the procedures and requirements outlined in USACE Engineering Manual ER 1110-I-12.

DIKE 253.8(L)

DIKE 253

DIK

ILLINOIS

DIKE 253.2(R)

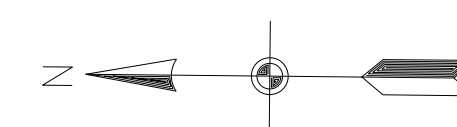
MISSOURI

PLAN

This deliverable complies with the Quality Control Plan developed by Prairie Engineers, P.C. and with the procedures and requirements outlined in USACE Engineering Manual ER 110-1-12.



ILLINOIS



July, 08 2020
INTERPOLATED WATER SURFACE ELEVATIONS

MILE	MP	WS 10:30	WS 16:30	MP DIFF 10:30	MP DIFF 16:30
254.0	432.6	437.0	436.9	4.4	4.3
253.0	432.3	436.5	436.4	4.2	4.0
252.0	432.1	436.0	435.9	3.9	3.8
251.0	431.9	435.5	435.4	3.6	3.5

E 443000

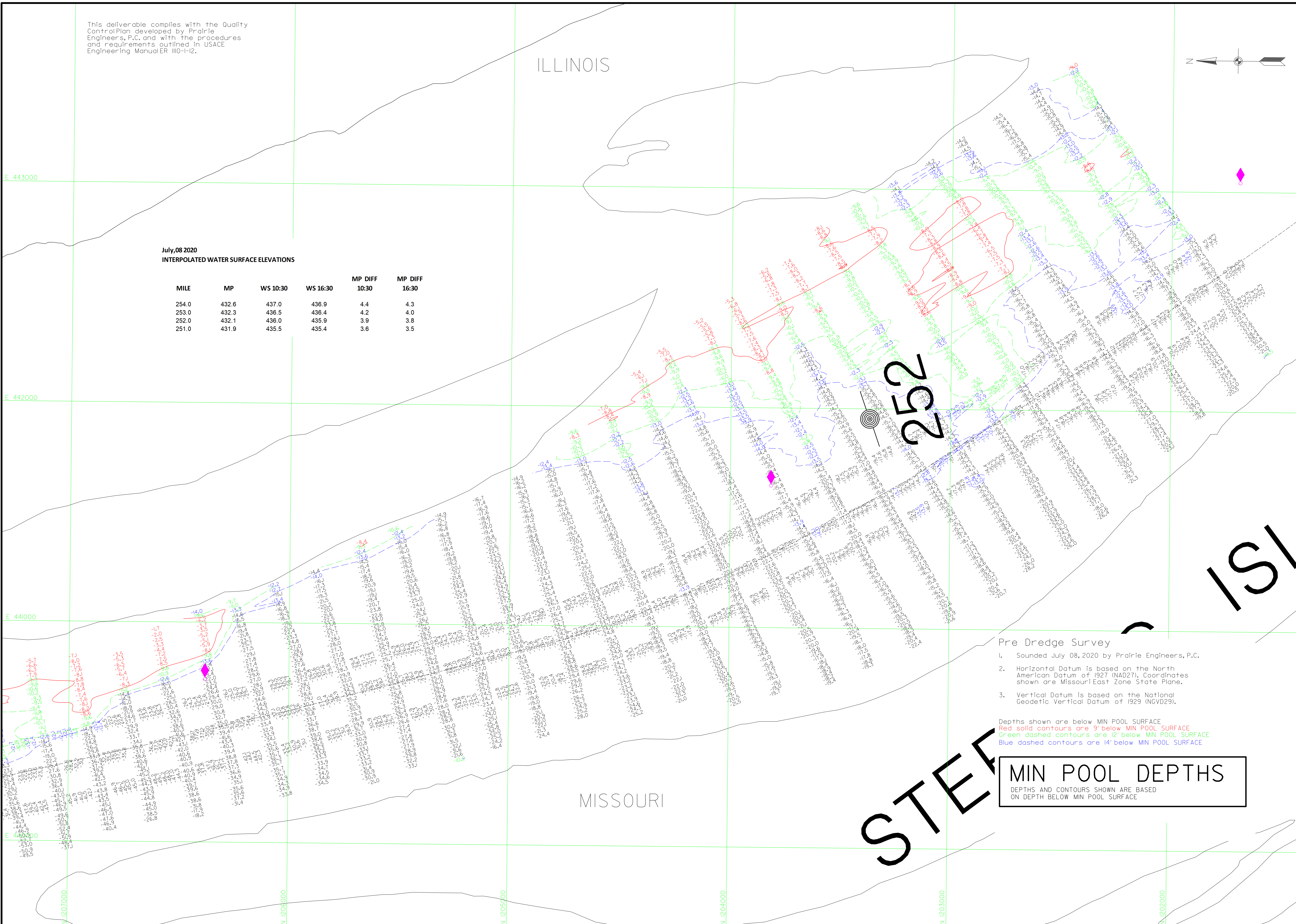
E 442000

E 441000

E 440000

GAGE RECORD	
MOSER	L&D 25 (UP)
400.0	407.0
260.3	244.5
434.0	429.7
402.2 (0230)	430.7 (0230)
400.0 (0630)	430.8 (0630)

Survey Date: July 8, 2020	Submitted: Chief, Engr. Data Mgmt. Sect.
File: 2520820_Sr102.dgn	Plot Date: 7/16/2020
Plot Scale: 1"=200'	
Supervised by: PRAIRIE ENGINEERS	Drawn by: JUK
Reviewed by:	APPROVED: Chief, Geospatial Branch
U.S. ARMY ENGINEER DIVISION CORPS OF ENGINEERS ST. LOUIS, MISSOURI	
UPPER MISSISSIPPI RIVER BASIN MISSISSIPPI RIVER	



Pre Dredge Survey
1. Sounded July 08, 2020 by Prairie Engineers, P.C.
2. Horizontal Datum is based on the North American Datum of 1927 (NAD27). Coordinates shown are Missouri East Zone State Plane.
3. Vertical Datum is based on the National Geodetic Vertical Datum of 1929 (NGVD29).

Depths shown are below MIN POOL SURFACE
Red solid contours are 9' below MIN POOL SURFACE
Green dashed contours are 12' below MIN POOL SURFACE
Blue dashed contours are 14' below MIN POOL SURFACE

MIN POOL DEPTHS
DEPTHS AND CONTOURS SHOWN ARE BASED ON DEPTH BELOW MIN POOL SURFACE

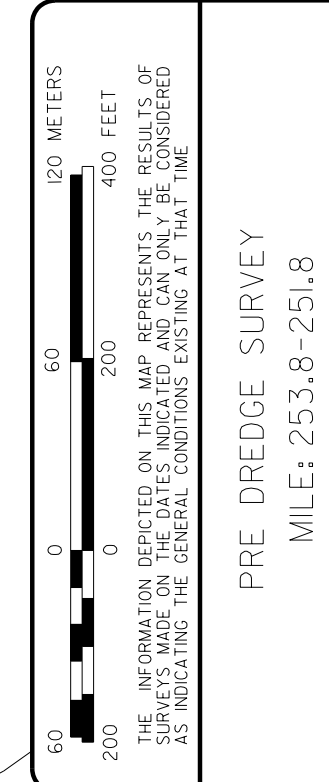


PLATE NUMBER
02

STEEL

ISL

MISSOURI