

GAGE RECORD	
WATER SURFACE	MOSER
ZERO N.G.V.D.	400.0
MILE	260.3
MIN POOL	434.0
23 JUL 2020	437.7 (10'00)
	437.7 (10'00)
	437.7 (10'00)
	437.7 (10'00)
	437.7 (10'00)

Survey Date: July 23, 2020	Submitted: July 23, 2020
Drawn by: JLR	Chief Engr. Date Mgmt. Sect.
Reviewed by:	24802320.mxd
APPROVED:	Plot date: 7/23/2020
	Plot scale: 1"=200'

U.S. ARMY ENGINEER DIVISION  
CORPS OF ENGINEERS  
ST. LOUIS, MISSOURI

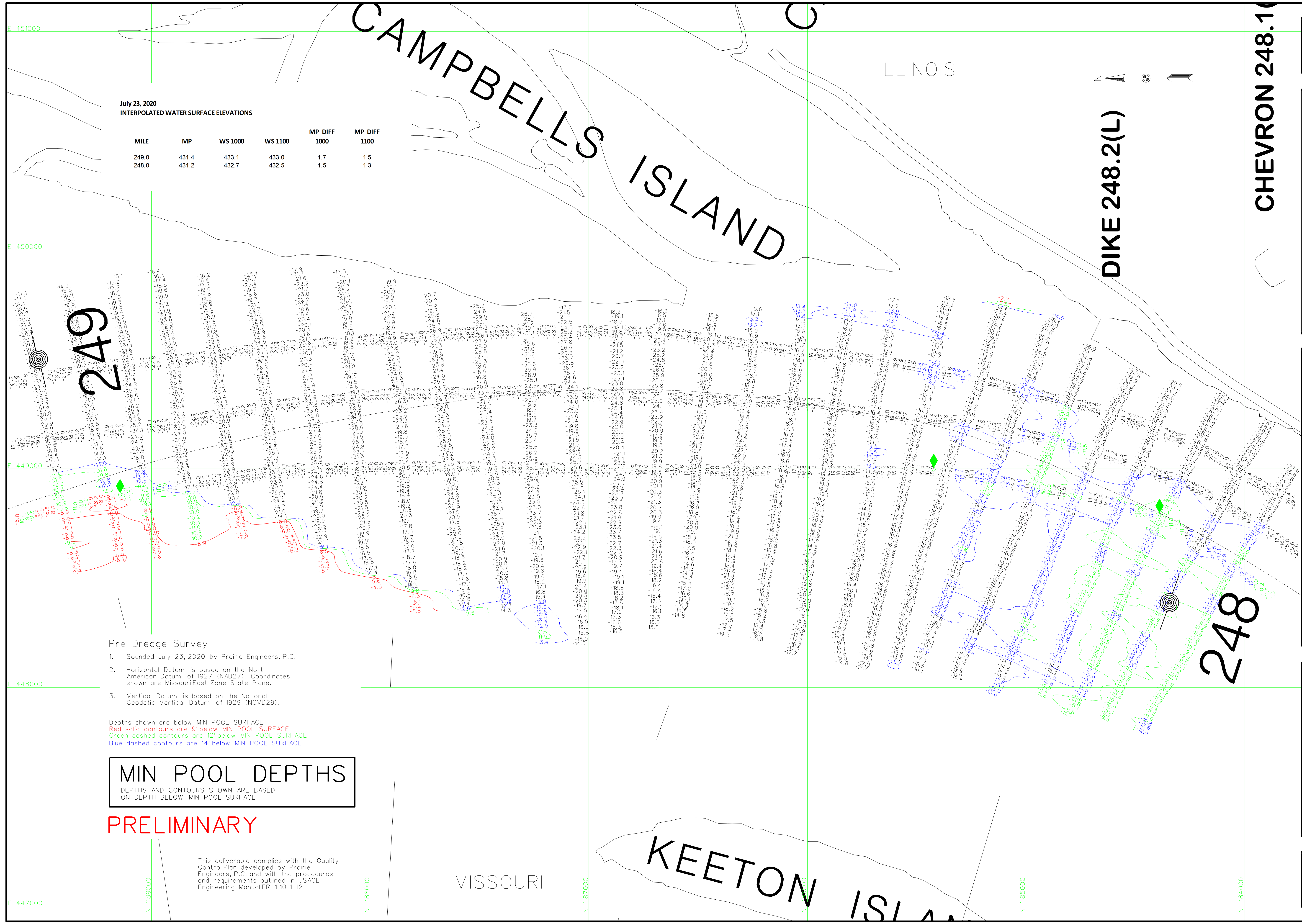
UPPER MISSISSIPPI RIVER BASIN  
MISSISSIPPI RIVER

120 METERS  
0 200 400 FEET

THE INFORMATION DEPICTED ON THIS MAP REPRESENTS THE RESULTS OF A SURVEY CONDUCTED UNDER THE GENERAL CONDITIONS SET FORTH IN THE USACE ENGINEERING MANUAL ER 1110-1-12.

PRE DREDGE SURVEY  
MILE: 249.0-248.0

PLATE NUMBER  
01



July 23, 2020  
INTERPOLATED WATER SURFACE ELEVATIONS

MILE	MP	WS 1000	WS 1100	MP DIFF 1000	MP DIFF 1100
249.0	431.4	433.1	433.0	1.7	1.5
248.0	431.2	432.7	432.5	1.5	1.3

- Pre Dredge Survey
- Sounded July 23, 2020 by Prairie Engineers, P.C.
  - Horizontal Datum is based on the North American Datum of 1927 (NAD27). Coordinates shown are Missouri East Zone State Plane.
  - Vertical Datum is based on the National Geodetic Vertical Datum of 1929 (NGVD29).

Depths shown are below MIN POOL SURFACE  
 Red solid contours are 9' below MIN POOL SURFACE  
 Green dashed contours are 12' below MIN POOL SURFACE  
 Blue dashed contours are 14' below MIN POOL SURFACE

**MIN POOL DEPTHS**  
 DEPTHS AND CONTOURS SHOWN ARE BASED ON DEPTH BELOW MIN POOL SURFACE

**PRELIMINARY**

This deliverable complies with the Quality Control Plan developed by Prairie Engineers, P.C. and with the procedures and requirements outlined in USACE Engineering Manual ER 1110-1-12.