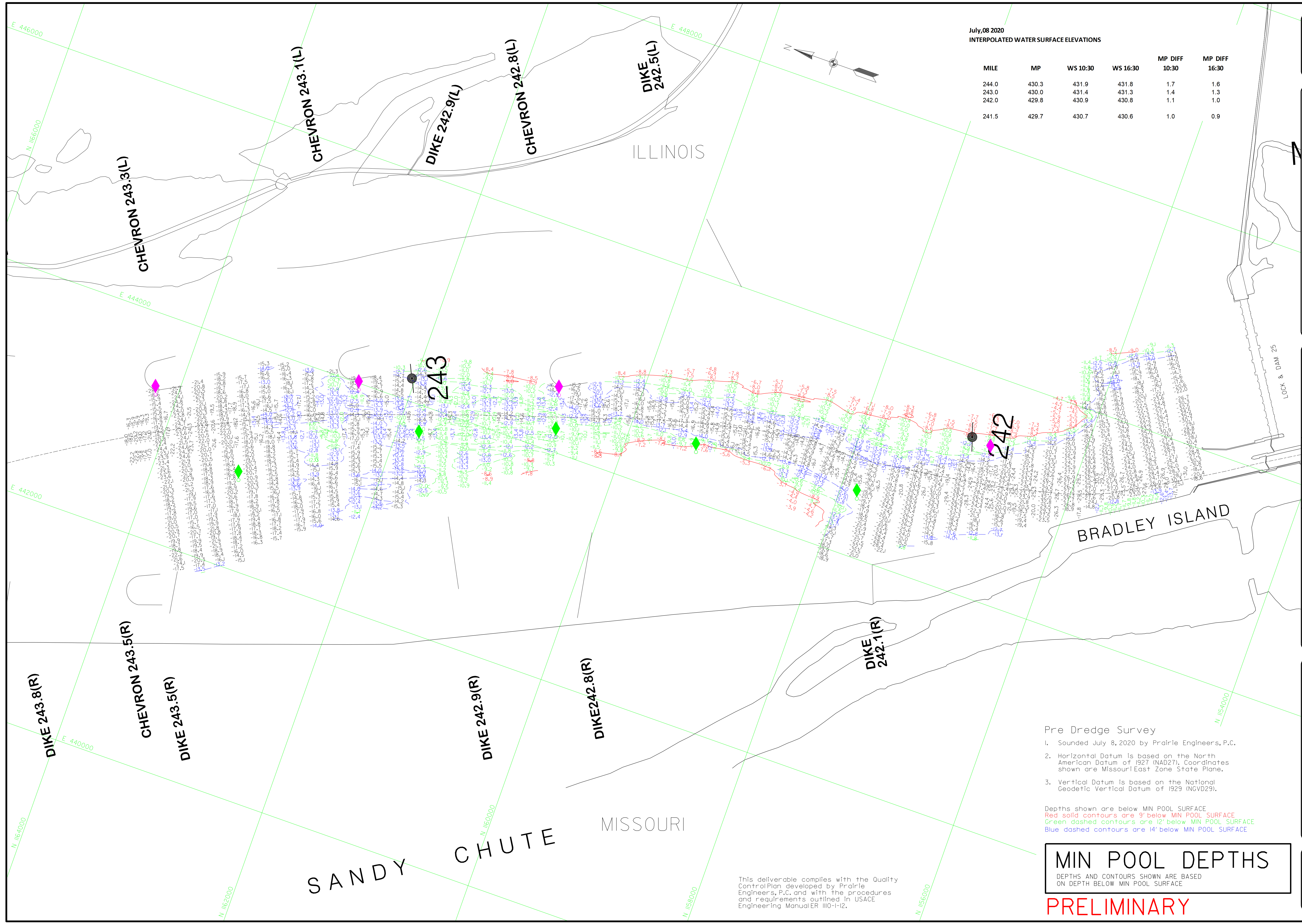


July, 08 2020
INTERPOLATED WATER SURFACE ELEVATIONS

MILE	MP	WS 10:30	WS 16:30	MP DIFF 10:30	MP DIFF 16:30
244.0	430.3	431.9	431.8	1.7	1.6
243.0	430.0	431.4	431.3	1.4	1.3
242.0	429.8	430.9	430.8	1.1	1.0
241.5	429.7	430.7	430.6	1.0	0.9



WATER SURFACE	MP	WS 10:30	WS 16:30	MP DIFF 10:30	MP DIFF 16:30
400.0	430.3	431.9	431.8	1.7	1.6
260.3	430.0	431.4	431.3	1.4	1.3
434.0	429.8	430.9	430.8	1.1	1.0
440.2 (0330)	429.7	430.7	430.6	1.0	0.9
440.0 (0630)					

Survey Date: JULY 08, 2020
SUBMITTED: Chief, Engr. Data Mgmt. Sect.
File: 2420850.mxd
Plot Date: 7/13/2020
Plot Scale: 1"=400'

U.S. ARMY ENGINEER DIVISION
CORPS OF ENGINEERS
ST. LOUIS, MISSOURI
UPPER MISSISSIPPI RIVER BASIN
MISSISSIPPI RIVER

Supervised by: PRAIRIE ENGINEERS
Drawn by: BCB
Reviewed by: BCB
APPROVED: Chief, Geospatial Branch

PRE DREDGE SURVEY
MILE: 243.3 - 241.5

PLATE NUMBER
01

- Pre Dredge Survey
- Sounded July 8, 2020 by Prairie Engineers, P.C.
 - Horizontal Datum is based on the North American Datum of 1927 (NAD27). Coordinates shown are Missouri East Zone State Plane.
 - Vertical Datum is based on the National Geodetic Vertical Datum of 1929 (NGVD29).

Depths shown are below MIN POOL SURFACE
Red solid contours are 9' below MIN POOL SURFACE
Green dashed contours are 12' below MIN POOL SURFACE
Blue dashed contours are 14' below MIN POOL SURFACE

MIN POOL DEPTHS
DEPTHS AND CONTOURS SHOWN ARE BASED ON DEPTH BELOW MIN POOL SURFACE

PRELIMINARY

This deliverable complies with the Quality Control Plan developed by Prairie Engineers, P.C. and with the procedures and requirements outlined in USACE Engineering Manual 110-1-12.