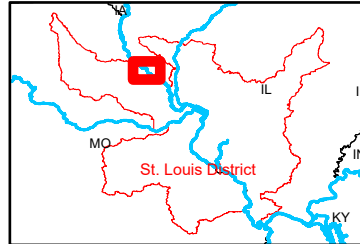
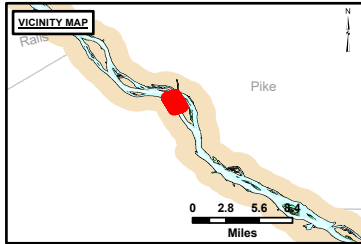


DISCLAIMER: The United States Government Lenders Access Component. The data represents the results of data collection/processing by a specific US Army Corps of Engineers District. The data is provided for informational purposes only. It is not intended for navigation. The user assumes all liability for any use of the data for any purpose other than that intended by the US Army Corps of Engineers. The data is provided as is, without warranty of any kind, express or implied, including but not limited to accuracy, completeness, and reliability. The user shall be responsible for verifying the accuracy and reliability of the data for their intended use. The user shall be responsible for obtaining any necessary permits or clearances for any use of the data for any purpose other than that intended by the US Army Corps of Engineers. The data is provided for informational purposes only. It is not intended for navigation. The user assumes all liability for any use of the data for any purpose other than that intended by the US Army Corps of Engineers. The data is provided as is, without warranty of any kind, express or implied, including but not limited to accuracy, completeness, and reliability. The user shall be responsible for verifying the accuracy and reliability of the data for their intended use. The user shall be responsible for obtaining any necessary permits or clearances for any use of the data for any purpose other than that intended by the US Army Corps of Engineers.

U.S. ARMY CORPS OF ENGINEERS		
Surveyed By:	Plotted By:	Checked By:

Survey Information
 POOL_24_UPPER_MISSISSIPPI
 UM_SL_P24_20240213_BD_1
 13 February 2024



LAYERS

- River Mile
- Sailing Line
- 9' below Minimum Pool
- 12' below Minimum Pool
- 14' below Minimum Pool

Depths shown are below Minimum Pool

Aids to Navigation

- Green
- Red
- Junction
- Green Buoy
- Red Buoy

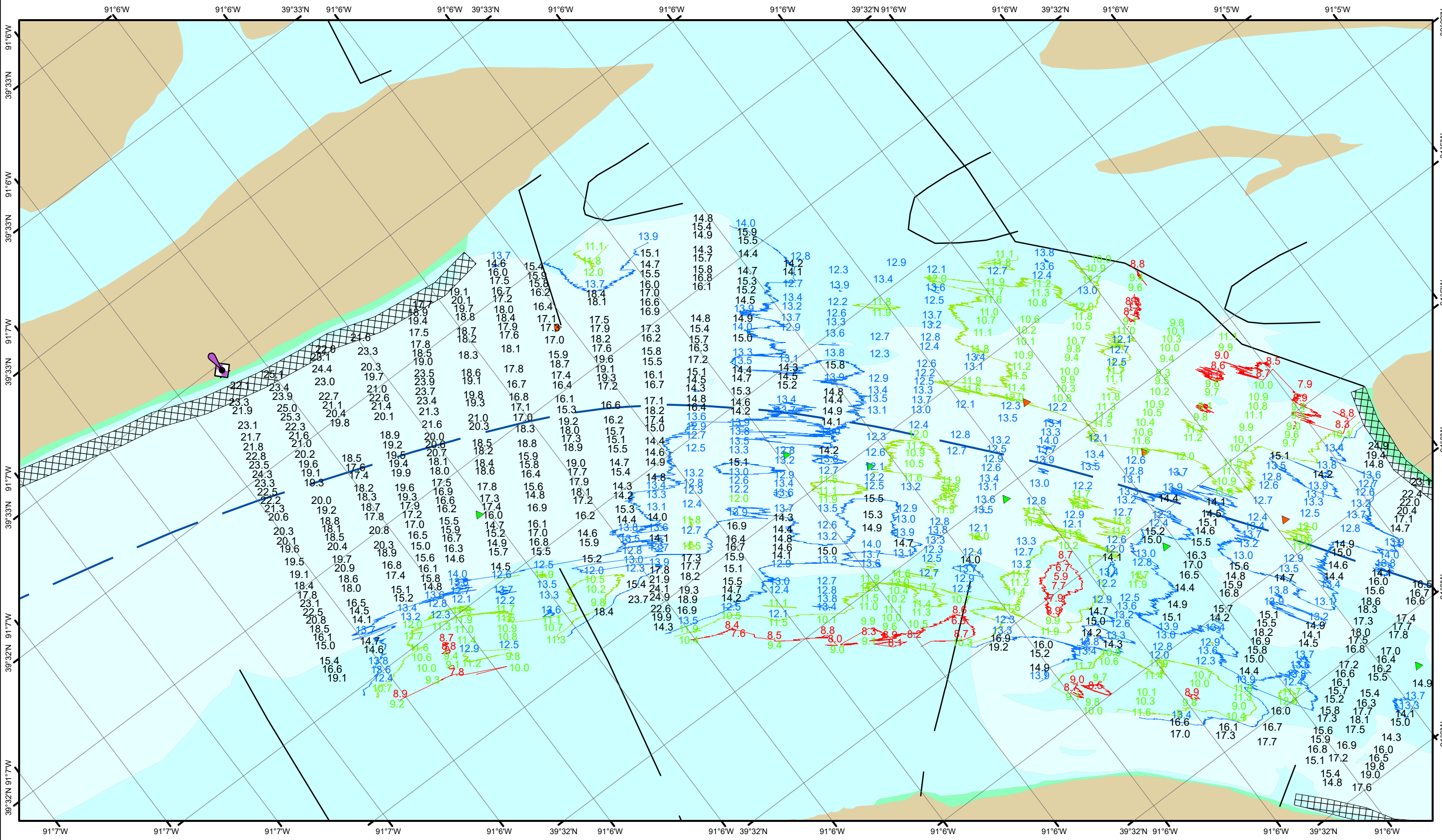
Structures and Lines

- Training Structure
- Revetment
- Tower/Power Poles
- Electrical Lines
- Fiber Optic Lines
- Pipelines

Vertical Datum: Soundings are shown in feet and indicate depths below the Minimum Pool.

The information depicted on this map represents the results of a survey conducted on the date indicated and can only be considered to represent the general condition existing at that time.

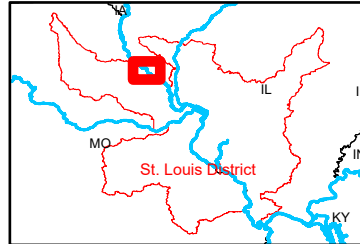
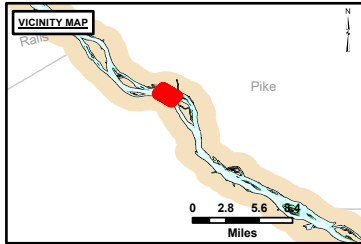
The location of navigation aids are based on and provided by the U.S. Coast Guard.



DISCLAIMER: The United States Government furnishes this information for general information only. It is not intended for use in any other application. The user assumes all liability for any use of this information other than that intended by the United States Government. The United States Government makes no warranty, express or implied, in this information. It is not intended for use in any other application. The user assumes all liability for any use of this information other than that intended by the United States Government. The United States Government makes no warranty, express or implied, in this information. It is not intended for use in any other application. The user assumes all liability for any use of this information other than that intended by the United States Government.

Surveyed By:	Printed By:	Checked By:

Survey Information
 POOL_24_UPPER_MISSISSIPPI
 UM_SL_P24_20240213_BD_1
 13 February 2024



LAYERS

- River Mile
- Sailing Line
- 9' below Minimum Pool
- 12' below Minimum Pool
- 14' below Minimum Pool

Depths shown are below Minimum Pool

Aids to Navigation

- Green
- Red
- Junction
- Green Buoy
- Red Buoy

Structures

- Training Structure
- Revetment
- Tower/Power Poles
- Electrical Lines
- Fiber Optic Lines
- Pipelines

Scale: 0 250 500 750 1,000 Feet

NOTES:
 Horizontal Coordinate System: North American Datum of 1983 (NAD83), projected to the State Plane Coordinate System (SPCS), Missouri East Zone. Distance units in U.S. Survey Feet.
 Vertical Datum: Soundings are shown in feet and indicate depths below the Minimum Pool.
 The information depicted on this map represents the results of a survey conducted on the date indicated and can only be considered to represent the general condition existing at that time.
 The location of navigation aids are based on and provided by the U.S. Coast Guard.

Reach Number
 21 of 35

