



WATER SURFACE	MINDY	LOUISIANA
ZERO NGVD	449.9	437.3
MILE	293.0	282.9
MIN POOL	449.0	448.8
	19 NOV 2020	452.4 (1830)
		452.4 (1830)

Survey Date: November 19, 2020
 SUBMITTED: Chief, Engr. Data Mngt. Sect.
 File: 293020.mps.shrd.dgn
 Plot Date: 11/20/2020
 Plot Scale: 1"=200'

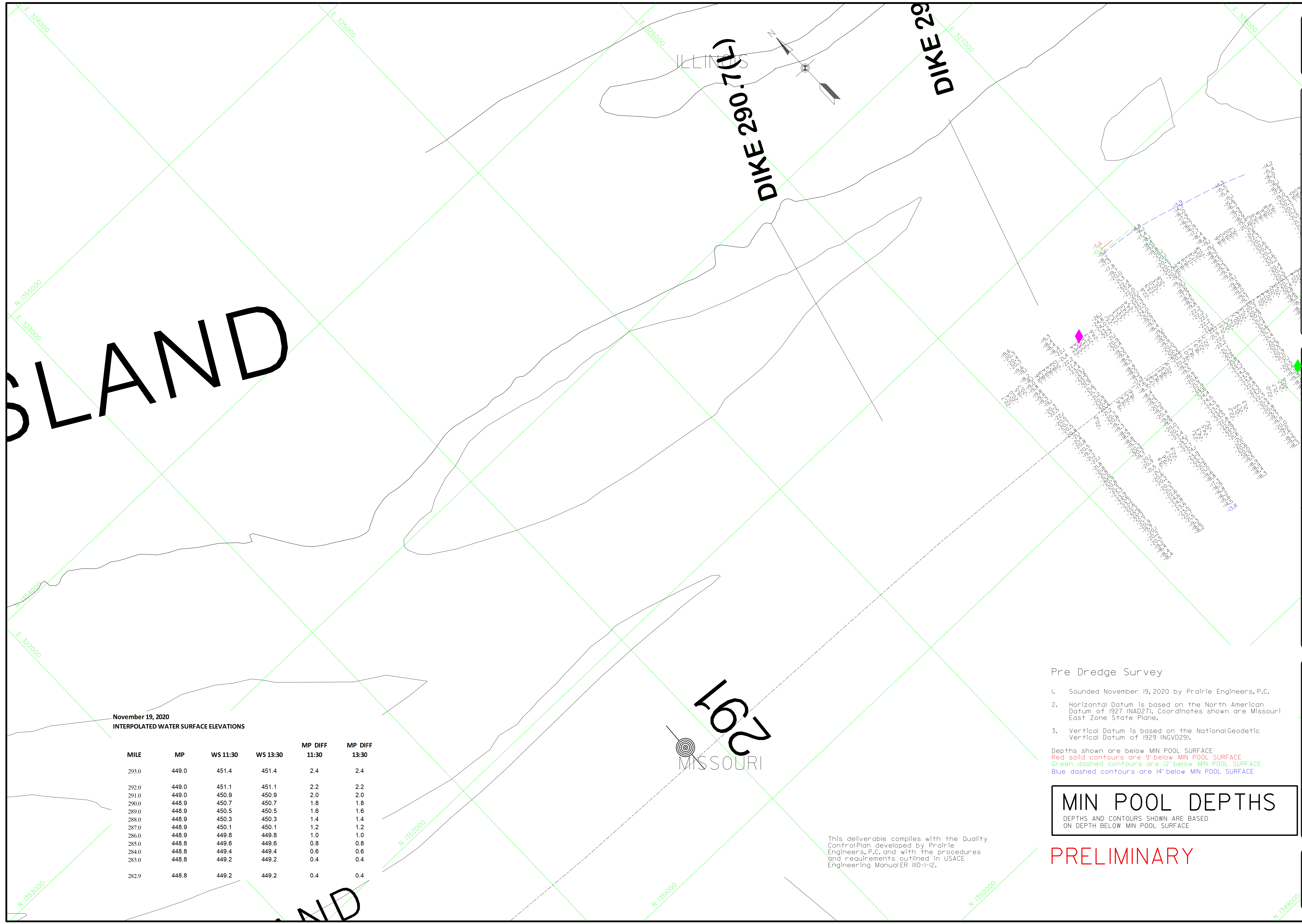
Supervised by: PRAIRIE ENGINEERS
 Drawn by: DGC by: JLM
 Reviewed by:
 APPROVED: Chief, Geospatial Branch

U.S. ARMY ENGINEER DIVISION
 CORPS OF ENGINEERS
 ST. LOUIS, MISSOURI
 UPPER MISSISSIPPI RIVER BASIN
 MISSISSIPPI RIVER

60 METERS
 200 FEET
 400 FEET
 THE INFORMATION DEPICTED ON THIS MAP REPRESENTS THE RESULTS OF A SURVEY CONDUCTED IN ACCORDANCE WITH THE GENERAL CONDITIONS AND SPECIFICATIONS OF THE MISSISSIPPI RIVER COMMISSION. THIS INFORMATION IS NOT TO BE USED FOR ANY OTHER PURPOSE.

PRE DREDGE SURVEY
 MILE: 290.15-289.0

PLATE NUMBER
 01



November 19, 2020
 INTERPOLATED WATER SURFACE ELEVATIONS

MILE	MP	WS 11:30	WS 13:30	MP DIFF 11:30	MP DIFF 13:30
293.0	449.0	451.4	451.4	2.4	2.4
292.0	449.0	451.1	451.1	2.2	2.2
291.0	449.0	450.9	450.9	2.0	2.0
290.0	448.9	450.7	450.7	1.8	1.8
289.0	448.9	450.5	450.5	1.6	1.6
288.0	448.9	450.3	450.3	1.4	1.4
287.0	448.9	450.1	450.1	1.2	1.2
286.0	448.9	449.8	449.8	1.0	1.0
285.0	448.8	449.6	449.6	0.8	0.8
284.0	448.8	449.4	449.4	0.6	0.6
283.0	448.8	449.2	449.2	0.4	0.4
282.9	448.8	449.2	449.2	0.4	0.4

Pre Dredge Survey

- Sounded November 19, 2020 by Prairie Engineers, P.C.
- Horizontal Datum is based on the North American Datum of 1927 (NAD27). Coordinates shown are Missouri East Zone State Plane.
- Vertical Datum is based on the National Geodetic Vertical Datum of 1929 (NGVD29).

Depths shown are below MIN POOL SURFACE
 Red solid contours are 9' below MIN POOL SURFACE
 Green dashed contours are 12' below MIN POOL SURFACE
 Blue dashed contours are 14' below MIN POOL SURFACE

MIN POOL DEPTHS
 DEPTHS AND CONTOURS SHOWN ARE BASED ON DEPTH BELOW MIN POOL SURFACE

PRELIMINARY

This deliverable complies with the Quality Control Plan developed by Prairie Engineers, P.C. and with the procedures and requirements outlined in USACE Engineering Manual ER 110-1-2.

GAGE RECORD		LOUISIANA
WATER SURFACE	MUNDY	437.3
ZERO NGVD		441.9
MILE		293.0
MIN POOL		448.0
	19 NOV 2020	454.0 (IS30)
		454.2 (IS30)
		454.4 (IS30)
		454.2 (IS30)

U.S. ARMY ENGINEER DIVISION CORPS OF ENGINEERS ST. LOUIS, MISSOURI		U.P.P.E. MISSISSIPPI RIVER BASIN MISSISSIPPI RIVER	
Surveyed by:	PRairie ENGINEERS	Program by:	PRC by: JLM
Reviewed by:	Chief, Engr. Data Mngt. Sect.	APPROVED:	Chief, Geospatial Branch
Submitted:	Chief, Engr. Data Mngt. Sect.	File:	289R20.mxd
Survey Date:	November 19, 2020	Plot Date:	11/20/2020
		Plot Scale:	1"=200'

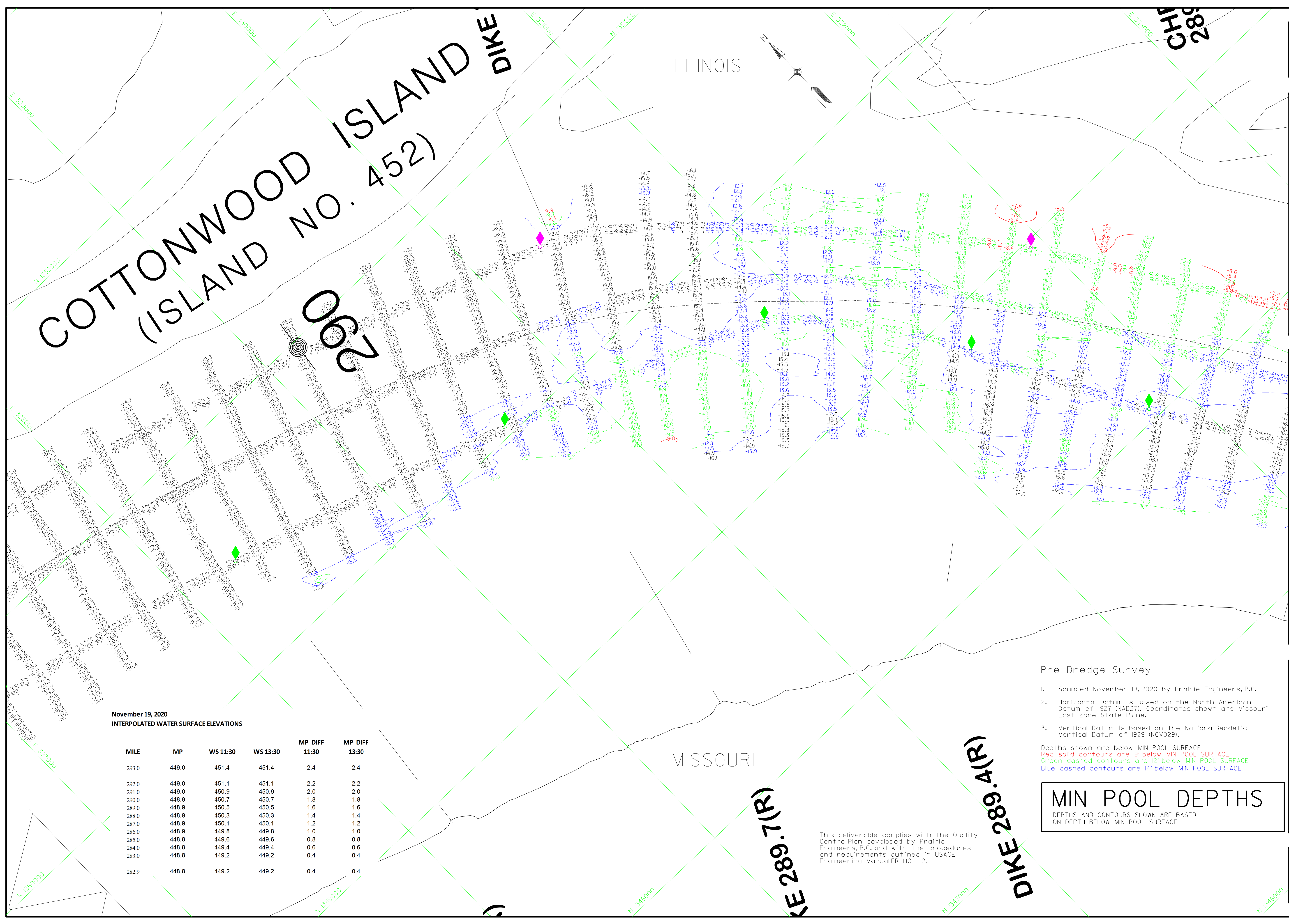
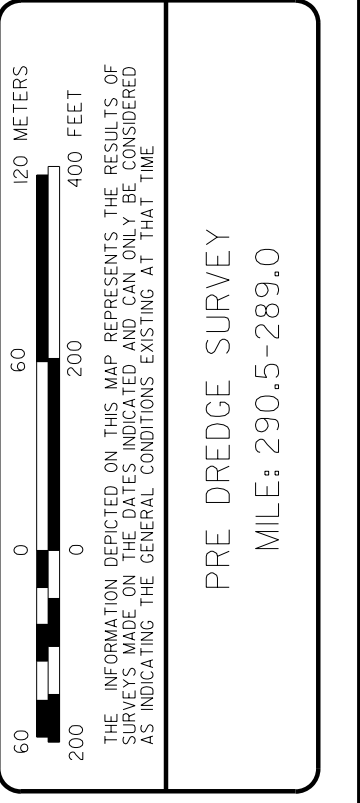
Pre Dredge Survey

- Sounded November 19, 2020 by Prairie Engineers, P.C.
- Horizontal Datum is based on the North American Datum of 1927 (NAD27). Coordinates shown are Missouri East Zone State Plane.
- Vertical Datum is based on the National Geodetic Vertical Datum of 1929 (NGVD29).

Depths shown are below MIN POOL SURFACE
 Red solid contours are 9' below MIN POOL SURFACE
 Green dashed contours are 12' below MIN POOL SURFACE
 Blue dashed contours are 14' below MIN POOL SURFACE

MIN POOL DEPTHS
 DEPTHS AND CONTOURS SHOWN ARE BASED ON DEPTH BELOW MIN POOL SURFACE

PRE DREDGE SURVEY
 MILE: 290.5-289.0



November 19, 2020
 INTERPOLATED WATER SURFACE ELEVATIONS

MILE	MP	WS 11:30	WS 13:30	MP DIFF 11:30	MP DIFF 13:30
293.0	449.0	451.4	451.4	2.4	2.4
292.0	449.0	451.1	451.1	2.2	2.2
291.0	449.0	450.9	450.9	2.0	2.0
290.0	448.9	450.7	450.7	1.8	1.8
289.0	448.9	450.5	450.5	1.6	1.6
288.0	448.9	450.3	450.3	1.4	1.4
287.0	448.9	450.1	450.1	1.2	1.2
286.0	448.9	449.8	449.8	1.0	1.0
285.0	448.8	449.6	449.6	0.8	0.8
284.0	448.8	449.4	449.4	0.6	0.6
283.0	448.8	449.2	449.2	0.4	0.4
282.9	448.8	449.2	449.2	0.4	0.4

This deliverable complies with the Quality Control Plan developed by Prairie Engineers, P.C. and with the procedures and requirements outlined in USACE Engineering Manual EM 110-I-12.

ILLINOIS

NORTH FRITZ ISLAND

DIKE 288.5(L)

289

DIKE 289.1(R)

DIKE 289.4(R)

GAGE RECORD		LOUISIANA	
WATER SURFACE	MUNDY	437.3	
ZERO NGVD		283.0	282.9
MILE		449.0	448.8
MIN POOL		454.0 (11/30)	452.0 (11/30)
		454.4 (11/30)	452.4 (11/30)

Survey Date: November 19, 2020	
Submitted by:	Chief, Engr. Data Mgmt. Sect.
Reviewed by:	File: 289R20.mxd-sh1103.dgn
Approved by:	Plot Date: 11/20/2020
	Plot Scale: 1"=200'

U.S. ARMY ENGINEER DIVISION CORPS OF ENGINEERS ST. LOUIS, MISSOURI	Supervised by: PRAIRIE ENGINEERS
UPPER MISSISSIPPI RIVER BASIN MISSISSIPPI RIVER	Program by: [Blank] Reviewed by: [Blank] Approved by: Chief, Geospatial Branch

PRE DREDGE SURVEY MILE: 290.5-289.0	Scale: 1"=200'
--	----------------

PLATE NUMBER 03

November 19, 2020
INTERPOLATED WATER SURFACE ELEVATIONS

MILE	MP	WS 11:30	WS 13:30	MP DIFF 11:30	MP DIFF 13:30
293.0	449.0	451.4	451.4	2.4	2.4
292.0	449.0	451.1	451.1	2.2	2.2
291.0	449.0	450.9	450.9	2.0	2.0
290.0	448.9	450.7	450.7	1.8	1.8
289.0	448.9	450.5	450.5	1.6	1.6
288.0	448.9	450.3	450.3	1.4	1.4
287.0	448.9	450.1	450.1	1.2	1.2
286.0	448.9	449.8	449.8	1.0	1.0
285.0	448.8	449.6	449.6	0.8	0.8
284.0	448.8	449.4	449.4	0.6	0.6
283.0	448.8	449.2	449.2	0.4	0.4
282.9	448.8	449.2	449.2	0.4	0.4

Pre Dredge Survey

- Sounded November 19, 2020 by Prairie Engineers, P.C.
- Horizontal Datum is based on the North American Datum of 1927 (NAD27). Coordinates shown are Missouri East Zone State Plane.
- Vertical Datum is based on the National Geodetic Vertical Datum of 1929 (NGVD29).

Depths shown are below MIN POOL SURFACE
 Red solid contours are 3' below MIN POOL SURFACE
 Green dashed contours are 12' below MIN POOL SURFACE
 Blue dashed contours are 14' below MIN POOL SURFACE

MIN POOL DEPTHS
 DEPTHS AND CONTOURS SHOWN ARE BASED ON DEPTH BELOW MIN POOL SURFACE

This deliverable complies with the Quality Control Plan developed by Prairie Engineers, P.C. and with the procedures and requirements outlined in USACE Engineering Manual ER 1110-1-12.

