

Access Considerations: The United States Government furnishes this information for the general information of the public and does not warrant the accuracy or completeness of the information and the data furnished. The United States shall be liable for damages only for negligence of any individual or entity that provides information to the United States Government for use on the system. The recipient may not transfer these data to others without obtaining the necessary permission.

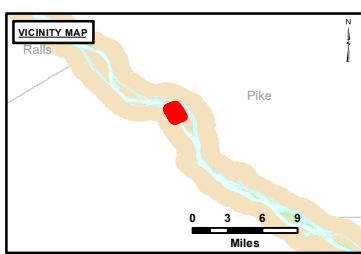
Distribution Liability: The data presented in this report are the result of a survey conducted by the United States Army Corps of Engineers. The data are not to be used for any purpose other than that for which they were collected. The data are not to be used for any purpose other than that for which they were collected. The data are not to be used for any purpose other than that for which they were collected.

U.S. ARMY CORPS OF ENGINEERS ST. LOUIS DISTRICT		
Surveyed By:	Revised By:	Checked By:
Submitted:	Recommended:	Approved:

Survey Information

POOL_24_UPPER_MISSISSIPPI
UM_SL_P24_20220401_OT_1
01 April 2022

Reach Number
20 of 35



LAYERS

- ◆ River Mile
- Sailing Line
- 9' below Minimum Pool
- 12' below Minimum Pool
- 14' below Minimum Pool

Depths shown are below Minimum Pool

Aids to Navigation

- Green
- Red
- Junction
- ▲ Green Buoy
- ▲ Red Buoy

— Training Structure

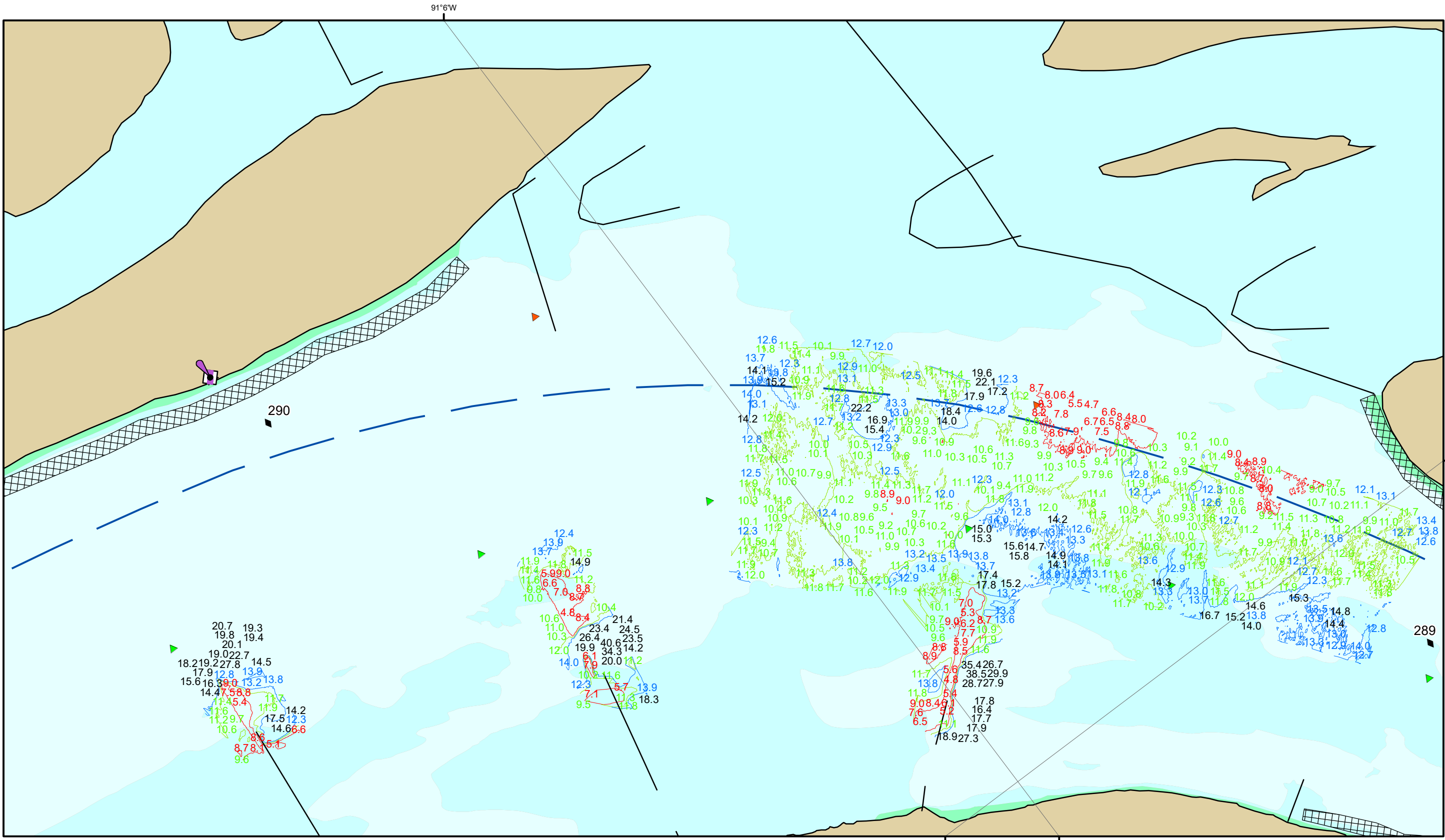
▨ Revetment

NOTES:
Horizontal Coordinate System: North American Datum of 1983 (NAD83), projected to the State Plane Coordinate System (SPCS), Missouri East Zone. Distance units in U.S. Survey Feet.

Vertical Datum: Soundings are shown in feet and indicate depths below the Minimum Pool.

The information depicted on this map represents the results of a survey conducted on the date indicated and can only be considered to represent the general condition existing at that time.

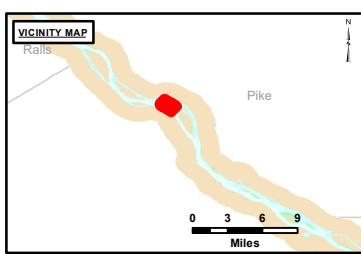
The location of navigation aids are based on and provided by the U.S. Coast Guard.



Access Constraints: The United States Government furnishes this information for the general information of the public and does not warrant the accuracy or completeness of the information and the data furnished. The United States shall be liable for damages only for negligence of any individual or entity that provides information for use on the system. The United States shall be liable for damages only for negligence of any individual or entity that provides information for use on the system. The United States shall be liable for damages only for negligence of any individual or entity that provides information for use on the system.

Submitted By:	Reviewed By:	Checked By:

Survey Information
 POOL_24_UPPER_MISSISSIPPI
 UM_SL_P24_20220401_OT_1
 01 April 2022



LAYERS

- River Mile
- Sailing Line
- 9' below Minimum Pool
- 12' below Minimum Pool
- 14' below Minimum Pool

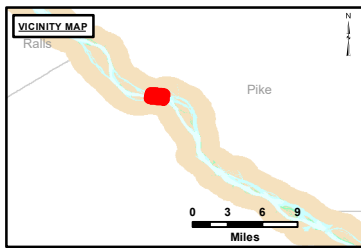
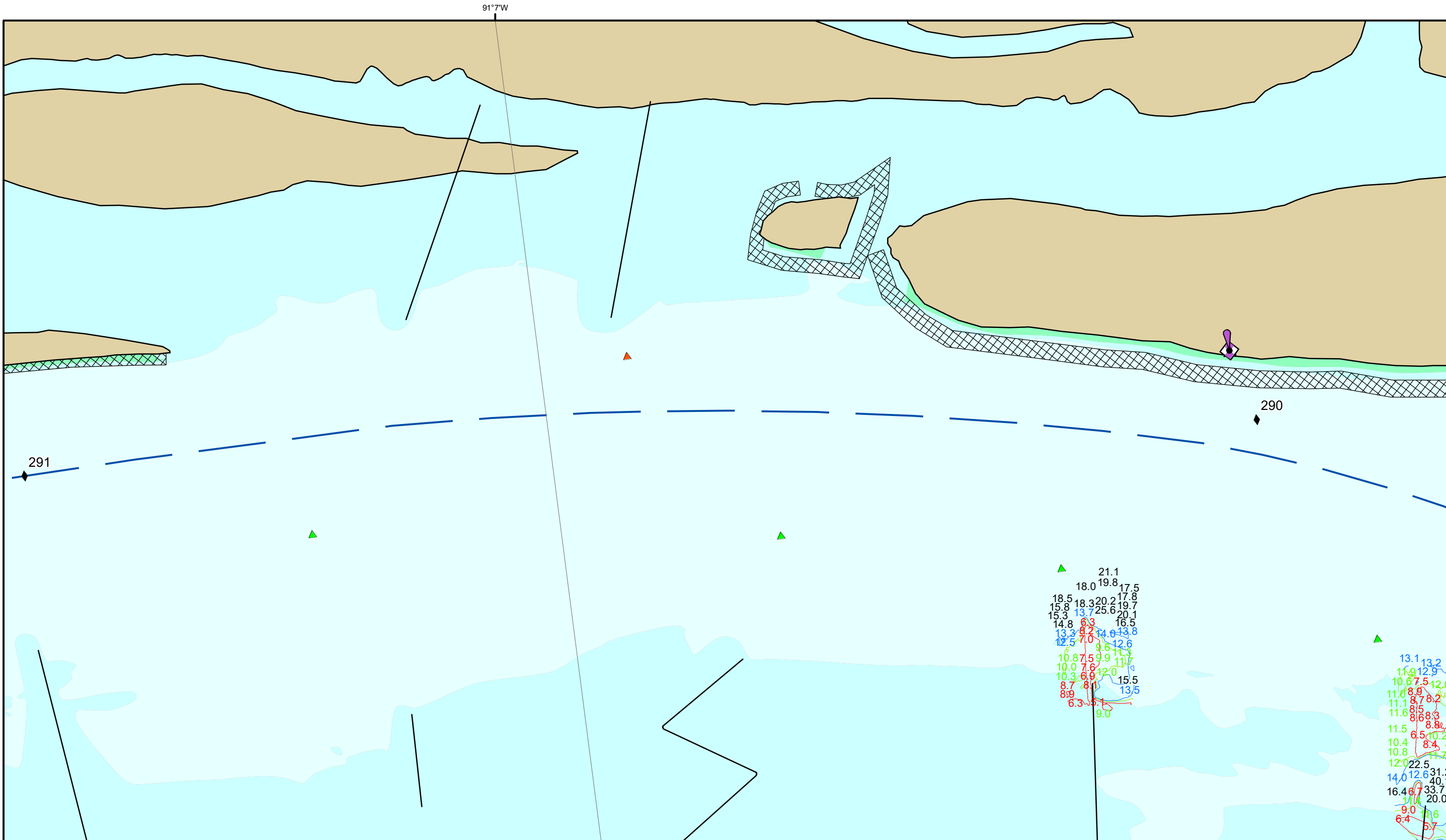
Depths shown are below Minimum Pool

Aids to Navigation

- Green Buoy
- Red Buoy
- Junction
- Training Structure
- Revetment

NOTES:
 Horizontal Coordinate System: North American Datum of 1983 (NAD83), projected to the State Plane Coordinate System (SPCS), Missouri East Zone. Distance units in U.S. Survey Feet.
 Vertical Datum: Soundings are shown in feet and indicate depths below the Minimum Pool.
 The information depicted on this map represents the results of a survey conducted on the date indicated and can only be considered to represent the general condition existing at that time.
 The location of navigation aids are based on and provided by the U.S. Coast Guard.

Reach Number
 21 of 35



LAYERS

- ◆ River Mile
- Sailing Line
- 9' below Minimum Pool
- 12' below Minimum Pool
- 14' below Minimum Pool

Depths shown are below Minimum Pool

Aids to Navigation

- Green
- Red
- Junction
- ▲ Green Buoy
- ▲ Red Buoy
- Training Structure
- ▨ Revetment

Vertical Datum:
Soundings are shown in feet and indicate depths below the Minimum Pool.

The information depicted on this map represents the results of a survey conducted on the date indicated and can only be considered to represent the general condition existing at that time.

The location of navigation aids are based on and provided by the U.S. Coast Guard.

NOTES:
Horizontal Coordinate System:
North American Datum of 1983 (NAD83), projected to the State Plane Coordinate System (SPCS), Missouri East Zone. Distance units in U.S. Survey Feet.

Vertical Datum:
Soundings are shown in feet and indicate depths below the Minimum Pool.

The information depicted on this map represents the results of a survey conducted on the date indicated and can only be considered to represent the general condition existing at that time.

The location of navigation aids are based on and provided by the U.S. Coast Guard.



DISTRICT LIABILITY: The data presented in this map is the result of a survey conducted by the U.S. Army Corps of Engineers. It is not intended for use in any other project. The user assumes all liability for any use of the information presented in this map for any purpose other than that intended by the U.S. Army Corps of Engineers.

ACCESS AGREEMENT: The United States Government furnishes this information for the use of the user in the performance of its official duties. It is not to be distributed outside the official duties of the user. The user assumes all liability for any use of the information presented in this map for any purpose other than that intended by the U.S. Army Corps of Engineers.

U.S. ARMY CORPS OF ENGINEERS
ST. LOUIS DISTRICT

Submitted By:	Reviewed By:	Checked By:

Survey Information

POOL_24_UPPER_MISSISSIPPI
UM_SL_P24_20220401_OT_1
01 April 2022

Reach Number
22 of 35