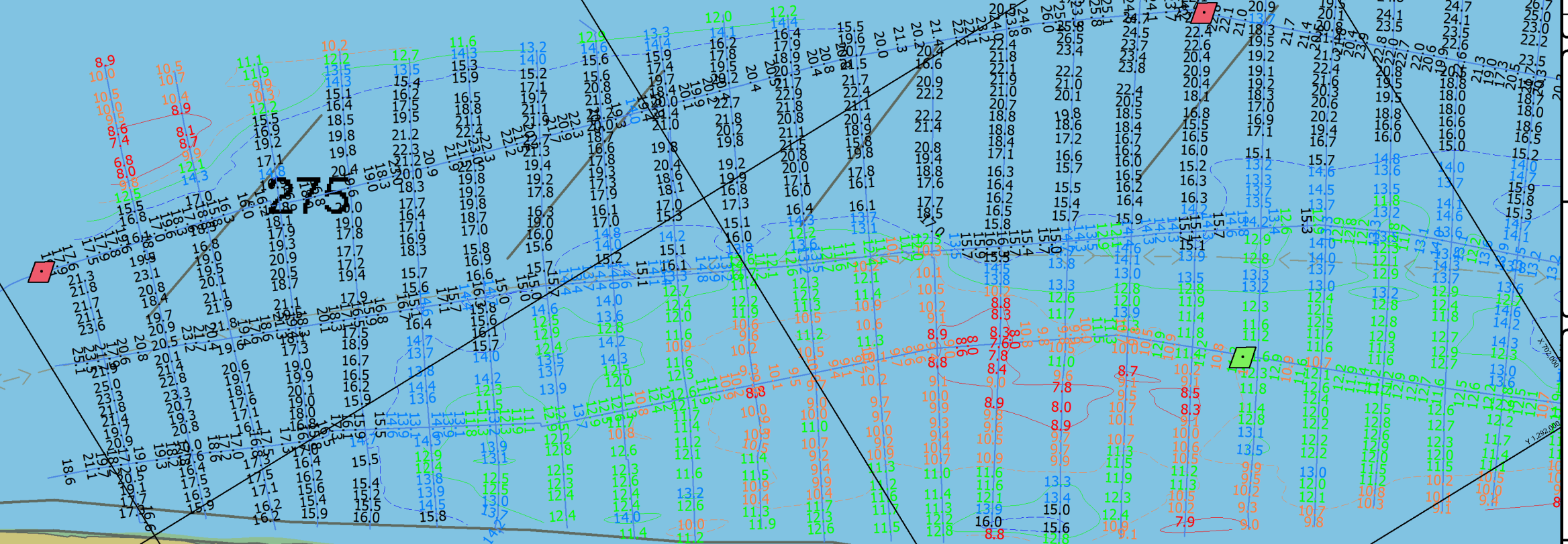


Scale: 1 Inch = 400.00 Feet

August 4, 2023
INTERPOLATED WATER SURFACE ELEVATIONS

MILE	MP	WS 17:00	WS 19:30	MP DIFF 17:00	MP DIFF 19:30
Louisiana					
282.9	448.80	449.40	449.36	0.60	0.56
276.0	446.38	449.25	449.21	2.87	2.83
275.0	446.03	449.23	449.19	3.20	3.16
274.0	445.68	449.21	449.17	3.53	3.49
LD 24					
273.5	445.50	449.20	449.16	3.70	3.66



- PRE DREDGE SURVEY
- Sounded 4 August, 2023 by Prairie Engineers, P.C.
 - Horizontal Datum NAD83(2011) Missouri East, Vertical Datum NGVD29
 - Depths shown are below Minimum Pool (MP)
 - Legend for the navigation aids can be found at nauticalcharts.noaa.gov/publications/us-chart-1.html
 - Depths shown are below Minimum Pool (MP)
 Red depths are between 9 feet, Minimum Pool (MP) and the surface
 Orange depths are 9 to 11 feet below Minimum Pool (MP)
 Green depths are 11 to 13 feet below Minimum Pool (MP)
 Blue depths are 13 to 15 feet below Minimum Pool (MP)
 Black depths are 15 feet and greater are below Minimum Pool (MP)
 - This deliverable complies with the Quality Control Plan developed by Prairie Engineers, P.C. and with the procedures and requirements outlined in the USACE Engineering manual ER 1110-2-1003.

FIG 6s (priv) FIG 6s (priv)

PRELIMINARY



Gage Records 4 August, 2023	19:30 = 12.03
Louisiana 17:00 = 12.07	19:30 = 27.35
LD 24 17:00 = 27.39	

DATES OF SURVEY:	4 August, 2023
SCALE:	ONE INCH = 400 FEET
FIELD BOOKS:	
FILE NO.:	
REQUEST NO.:	

Approved: **Abednego Nkem**
REGISTERED PROFESSIONAL ENGINEER

Approved: **Jarrett Lancer**
CIVIL ENGINEERING TECHNICIAN

Approved: **Jarrett Lancer**
ASST. CHIEF OF SURVEY

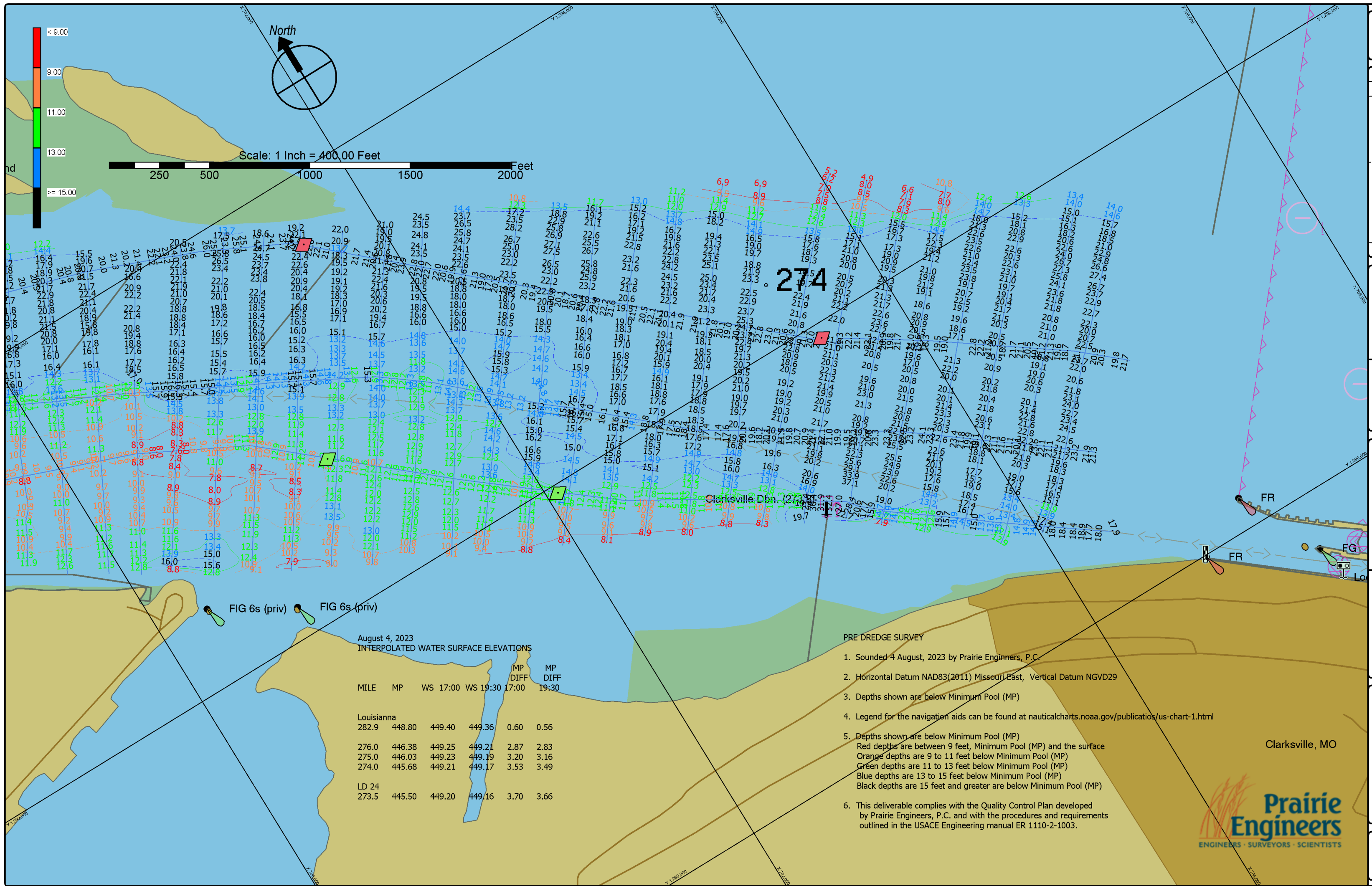
Approved: **Darren Foray**
CHIEF OF SURVEY

Date: 10 August, 2023

U.S. ARMY CORPS OF ENGINEERS
 ST. LOUIS DISTRICT
 ST. LOUIS, MISSOURI

SURVEYED BY
 PRAIRIE ENGINEERS, P.C.
 404 N. MAIN STREET
 COLUMBIA, IL. 62236

MIDDLE MISSISSIPPI RIVER
 PRE DREDGE SURVEY
 RIVER MILES 275.1 - 273.7



Gage Records 4 August, 2023	
Louisiana 17:00 = 12.07	19:30 = 12.03
LD 24 17:00 = 27.39	19:30 = 27.35

DATES OF SURVEY:	4 August, 2023
SCALE:	ONE INCH = 400 FEET
FIELD BOOKS:	
FILE NO.:	
REQUEST NO.:	

U.S. ARMY CORPS OF ENGINEERS
ST. LOUIS DISTRICT
ST. LOUIS, MISSOURI

Approved: **Abednego Nkomo**
RELATIONS MANAGER

Approved: **Jarrett Lancer**
CIVIL ENGINEERING TECHNICIAN

Approved: **Jarrett Lancer**
ASST. CHIEF OF SURVEY

Approved: **Darren Foray**
CHIEF OF SURVEY

Date: 10 August, 2023

SURVEYED BY
PRAIRIE ENGINEERS, P.C.
404 N. MAIN STREET
COLUMBIA, IL 62236

MIDDLE MISSISSIPPI RIVER
PRE DREDGE SURVEY
RIVER MILES 275.1 - 273.7

August 4, 2023
INTERPOLATED WATER SURFACE ELEVATIONS

MILE	MP	WS 17:00	WS 19:30	MP DIFF 17:00	MP DIFF 19:30
Louisiana					
282.9	448.80	449.40	449.36	0.60	0.56
276.0	446.38	449.25	449.21	2.87	2.83
275.0	446.03	449.23	449.19	3.20	3.16
274.0	445.68	449.21	449.17	3.53	3.49
LD 24					
273.5	445.50	449.20	449.16	3.70	3.66

- PRE DREDGE SURVEY
- Sounded 4 August, 2023 by Prairie Engineers, P.C.
 - Horizontal Datum NAD83(2011) Missouri East, Vertical Datum NGVD29
 - Depths shown are below Minimum Pool (MP)
 - Legend for the navigation aids can be found at nauticalcharts.noaa.gov/publications/us-chart-1.html
 - Depths shown are below Minimum Pool (MP)
Red depths are between 9 feet, Minimum Pool (MP) and the surface
Orange depths are 9 to 11 feet below Minimum Pool (MP)
Green depths are 11 to 13 feet below Minimum Pool (MP)
Blue depths are 13 to 15 feet below Minimum Pool (MP)
Black depths are 15 feet and greater are below Minimum Pool (MP)
 - This deliverable complies with the Quality Control Plan developed by Prairie Engineers, P.C. and with the procedures and requirements outlined in the USACE Engineering manual ER 1110-2-1003.



Clarksville, MO