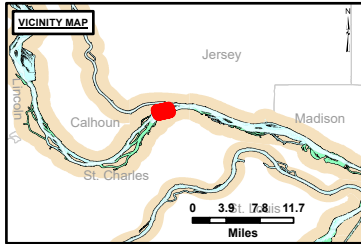


**DISCLAIMER:** The United States Government furnishes this information as a service to the public and does not warrant its accuracy, completeness, or timeliness. The user assumes all liability for any use of the information. The United States Government shall be held harmless for any damages, including consequential damages, arising from the use of this information. These data belong to the Government. Therefore, the recipient may not transfer these data to others without obtaining the Government's permission.

U.S. ARMY CORPS OF ENGINEERS		
Surveyed By:	Plotted By:	Checked By:
Number:	Document:	Approved:

**Survey Information**  
 POOL\_26\_UPPER\_MISSISSIPPI  
 UM\_SL\_P26\_20241015\_BD\_1  
 15 October 2024



**LAYERS**

- River Mile
- Sailing Line
- 9' below Minimum Pool
- 12' below Minimum Pool
- 14' below Minimum Pool

Depths shown are below Minimum Pool

**Aids to Navigation**

- Green
- Red
- Junction
- Green Buoy
- Red Buoy

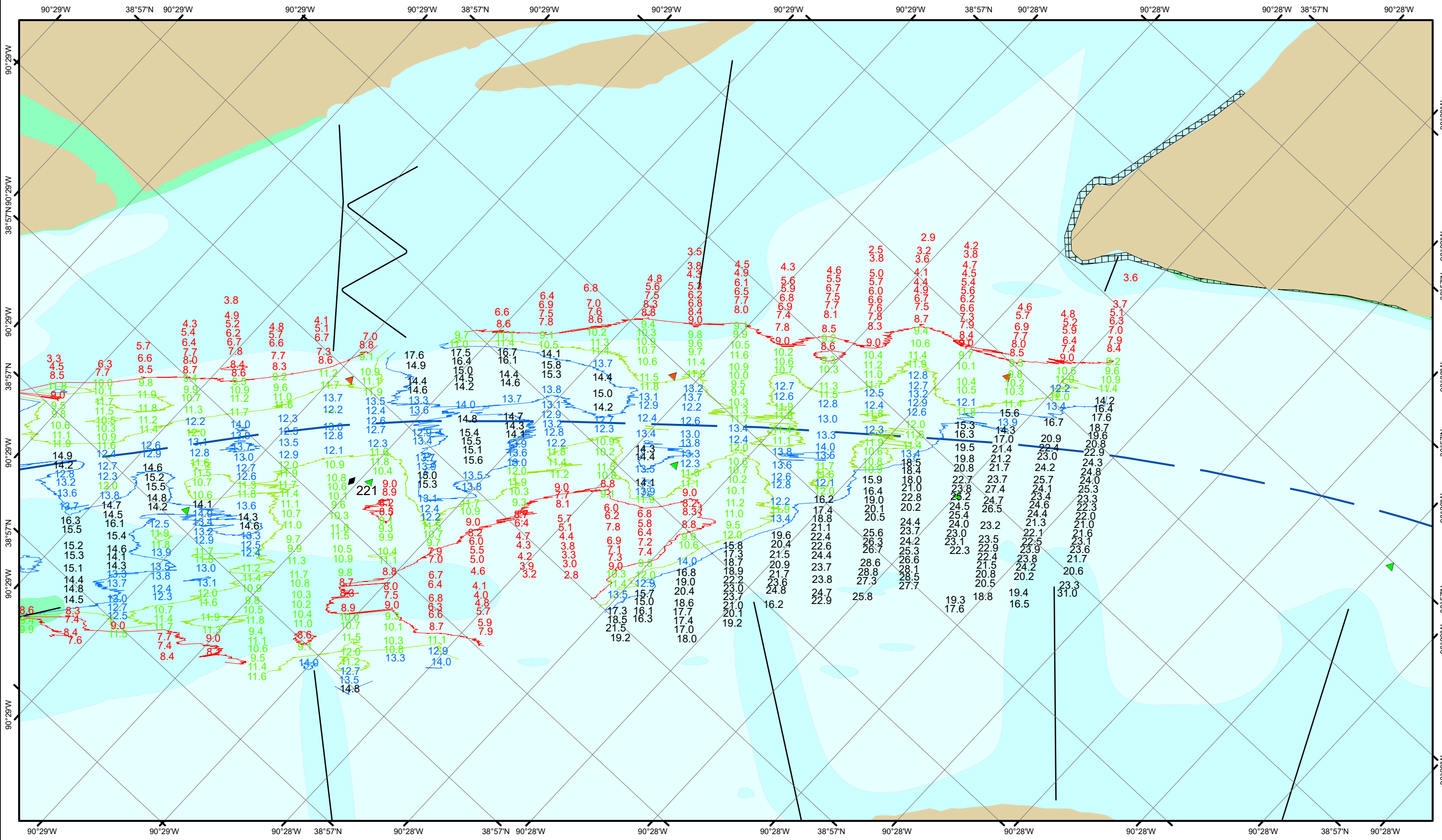
**Training Structure**

- Revetment
- Tower/Power Poles
- Electrical Lines
- Fiber Optic Lines
- Pipelines

Feet

0 250 500 750 1,000

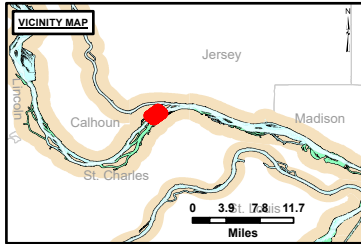
**NOTES:**  
 Horizontal Coordinate System:  
 North American Datum of 1983 (NAD83), projected to the State Plane Coordinate System (SPCS), Missouri East Zone. Distance units in U.S. Survey Feet.  
 Vertical Datum:  
 Soundings are shown in feet and indicate depths below the Minimum Pool.  
 The information depicted on this map represents the results of a survey conducted on the date indicated and can only be considered to represent the general condition existing at that time.  
 The location of navigation aids are based on and provided by the U.S. Coast Guard.



**DISCLAIMER:** The United States Government Lenders and/or guarantors of the data herein are not responsible for any errors or omissions in the data. The data represents the results of data collection and is not intended for navigation. The user assumes all responsibility for the use of the data. The data is provided for informational purposes only and is not intended for navigation. The user assumes all responsibility for the use of the data. The data is provided for informational purposes only and is not intended for navigation. The user assumes all responsibility for the use of the data.

Surveyed By:	Checked By:
Plotted By:	Approved:

**Survey Information**  
 POOL\_26\_UPPER\_MISSISSIPPI  
 UM\_SL\_P26\_20241015\_BD\_1  
 15 October 2024



**LAYERS**

- River Mile
- Sailing Line
- 9' below Minimum Pool
- 12' below Minimum Pool
- 14' below Minimum Pool

Depths shown are below Minimum Pool

**Aids to Navigation**

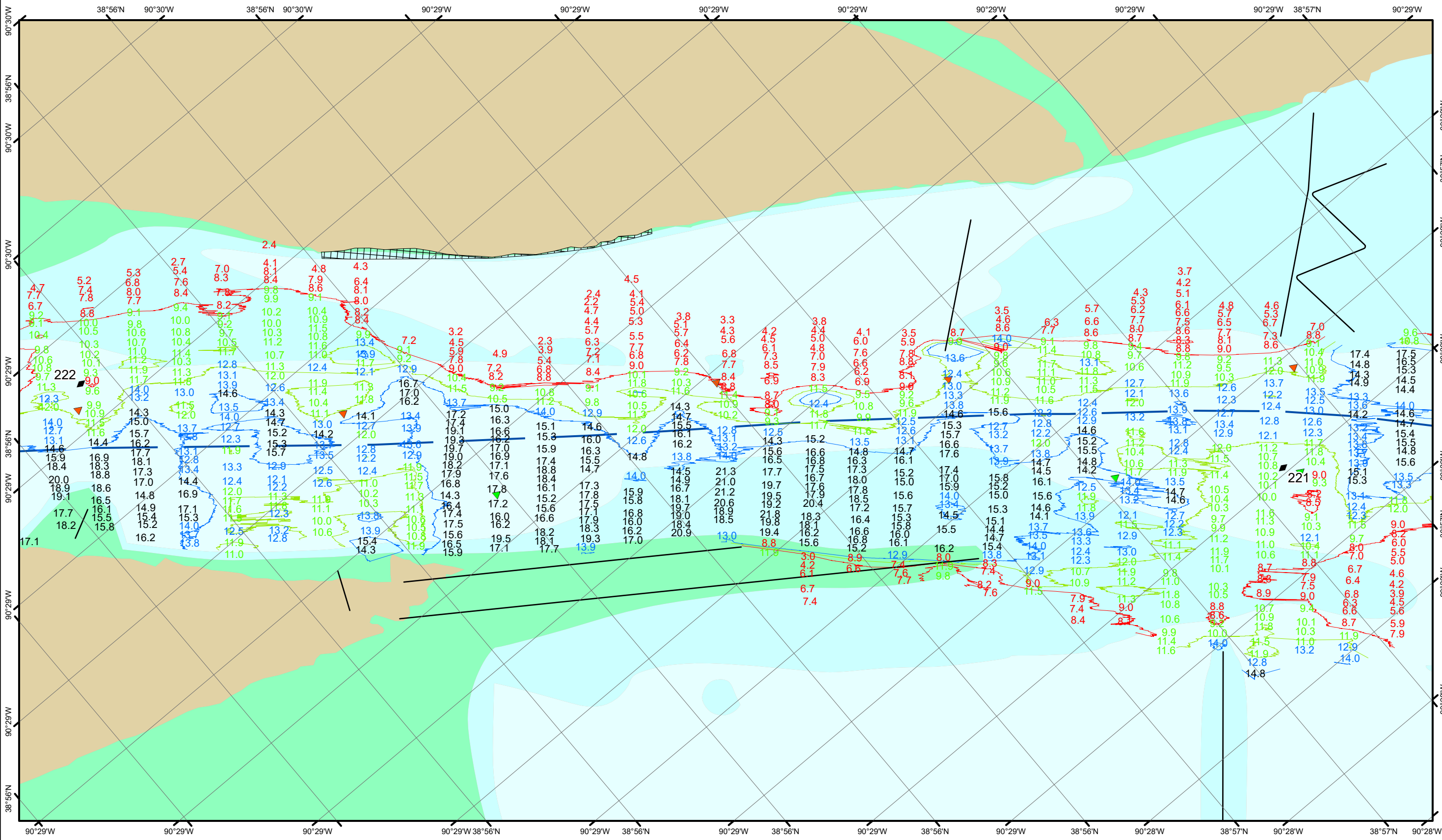
- Green Buoy
- Red Buoy
- Junction
- Training Structure
- Revetment
- Tower/Power Poles
- Electrical Lines
- Fiber Optic Lines
- Pipelines

Feet

0 250 500 750 1,000

**NOTES:**  
 Horizontal Coordinate System:  
 North American Datum of 1983 (NAD83), projected to the State Plane Coordinate System (SPCS), Missouri East Zone. Distance units in U.S. Survey Feet.  
 Vertical Datum:  
 Soundings are shown in feet and indicate depths below the Minimum Pool.  
 The information depicted on this map represents the results of a survey conducted on the date indicated and can only be considered to represent the general condition existing at that time.  
 The location of navigation aids are based on and provided by the U.S. Coast Guard.

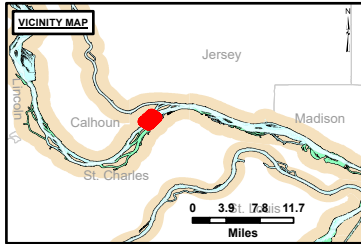
**Reach Number**  
 25 of 51



**DISCLAIMER:** The United States Government Lenders and/or guarantors of the U.S. Army Corps of Engineers. The data presented in this map is for informational purposes only and is not intended for navigation. The user assumes all liability for any use of the information presented in this map. The information presented in this map is not to be used for any purpose other than that for which it was intended. The user assumes all liability for any use of the information presented in this map. The information presented in this map is not to be used for any purpose other than that for which it was intended. The user assumes all liability for any use of the information presented in this map.

Surveyed By:	Checked By:
Plotted By:	Approved:
Documented:	

**Survey Information**  
 POOL\_26\_UPPER\_MISSISSIPPI  
 UM\_SL\_P26\_20241015\_BD\_1  
 15 October 2024



**LAYERS**

- River Mile
- Sailing Line
- 9' below Minimum Pool
- 12' below Minimum Pool
- 14' below Minimum Pool

Depths shown are below Minimum Pool

**Aids to Navigation**

- Green
- Red
- Junction
- Green Buoy
- Red Buoy

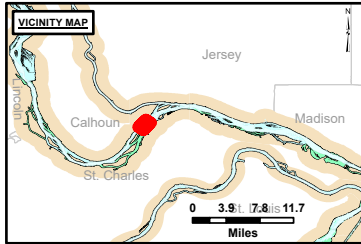
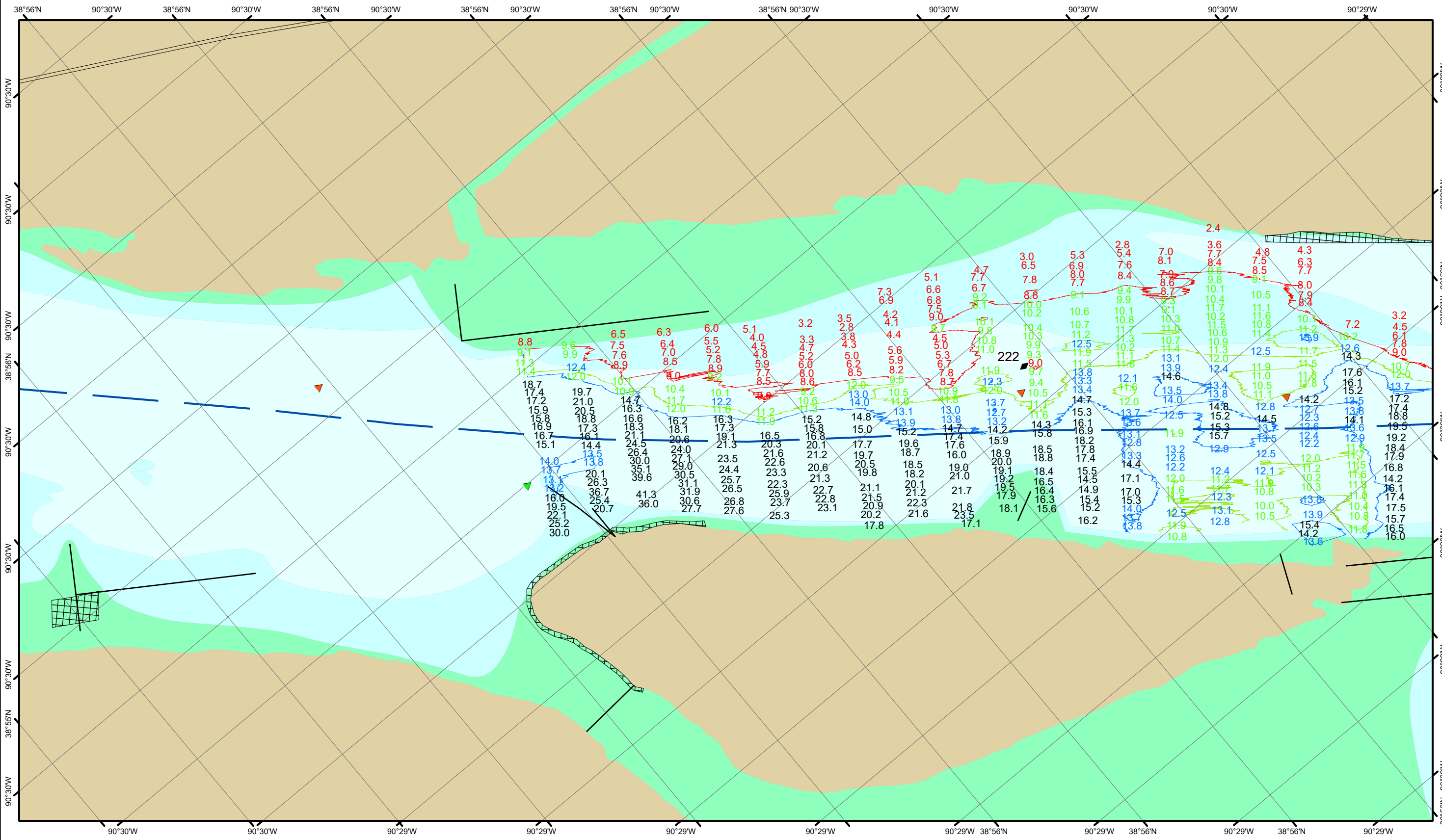
**Training Structure**

- Revetment
- Tower/Power Poles
- Electrical Lines
- Fiber Optic Lines
- Pipelines

Feet  
0 250 500 750 1,000

**NOTES:**  
 Horizontal Coordinate System:  
 North American Datum of 1983 (NAD83), projected to the State Plane Coordinate System (SPCS), Missouri East Zone. Distance units in U.S. Survey Feet.  
 Vertical Datum:  
 Soundings are shown in feet and indicate depths below the Minimum Pool.  
 The information depicted on this map represents the results of a survey conducted on the date indicated and can only be considered to represent the general condition existing at that time.  
 The location of navigation aids are based on and provided by the U.S. Coast Guard.

**Reach Number**  
 26 of 51



**LAYERS**

- River Mile
- Sailing Line
- 9' below Minimum Pool
- 12' below Minimum Pool
- 14' below Minimum Pool

Depths shown are below Minimum Pool

**Aids to Navigation**

- Green
- Red
- Junction
- Green Buoy
- Red Buoy

**Training Structure**

- Revetment
- Tower/Power Poles
- Electrical Lines
- Fiber Optic Lines
- Pipelines

Feet  
0 250 500 750 1,000

**NOTES:**  
Horizontal Coordinate System: North American Datum of 1983 (NAD83), projected to the State Plane Coordinate System (SPCS), Missouri East Zone. Distance units in U.S. Survey Feet.  
Vertical Datum: Soundings are shown in feet and indicate depths below the Minimum Pool.  
The information depicted on this map represents the results of a survey conducted on the date indicated and can only be considered to represent the general condition existing at that time.  
The location of navigation aids are based on and provided by the U.S. Coast Guard.



**DISCLAIMER:** The United States Government Lenders...  
The data represents the results of data collection...  
The data is provided for informational purposes only and is not intended for navigation or other critical purposes.

Surveyed By:	Plotted By:	Checked By:

**Survey Information**  
POOL\_26\_UPPER\_MISSISSIPPI  
UM\_SL\_P26\_20241015\_BD\_1  
15 October 2024

**Reach Number**  
27 of 51