

241



|                                      |
|--------------------------------------|
| Gage Records 03 July, 2023           |
| LD 25 TW 12:00 = 15.60 15:00 = 15.35 |
| Dixon 12:00 = 10.1 15:00 = 10.1      |

|                  |               |
|------------------|---------------|
| DATES OF SURVEY: | 03 July, 2023 |
| FILE NO.:        |               |
| REQUEST NO.:     |               |

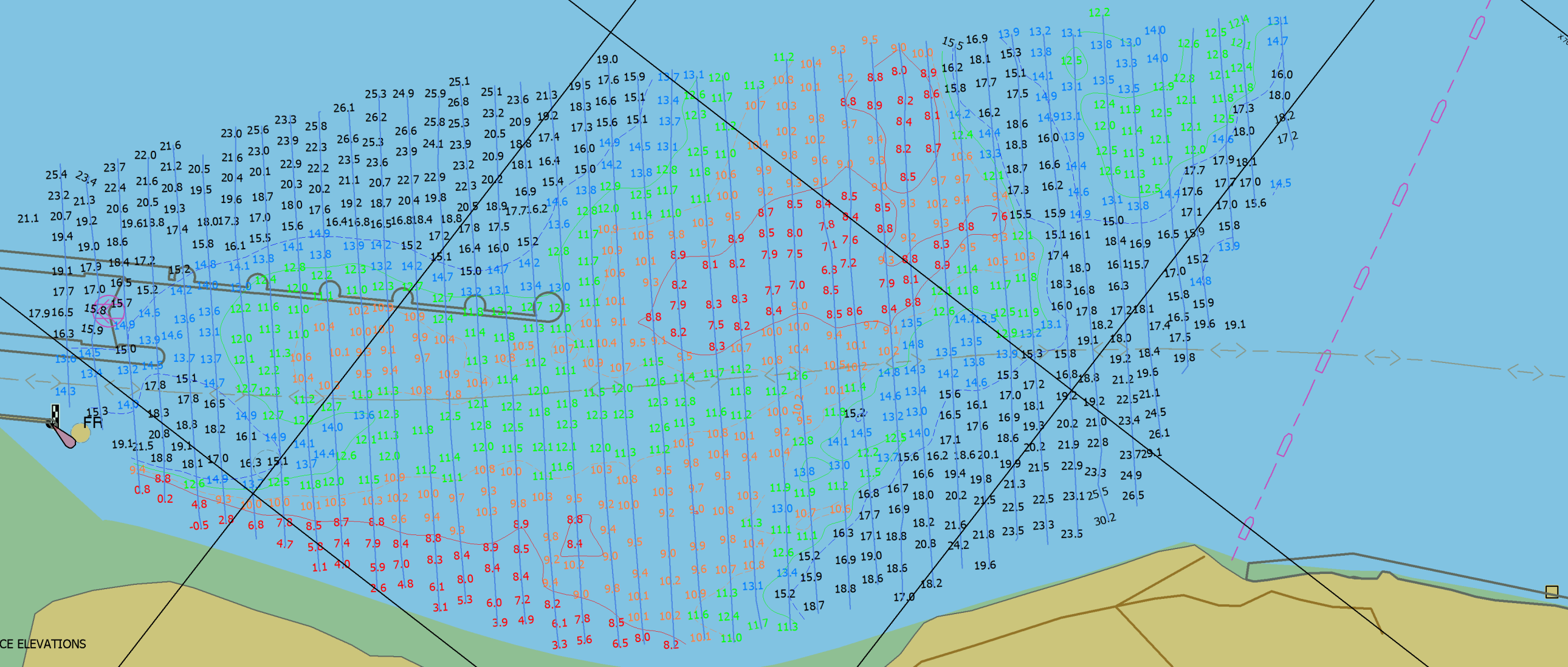
|              |                     |
|--------------|---------------------|
| SCALE:       | ONE INCH = 200 FEET |
| FIELD BOOKS: |                     |

|  |
|--|
| Approved: <b>Abdennour Nkomo</b><br>REGISTERED PROFESSIONAL ENGINEER |
| Approved: <b>Jarrett Lancer</b><br>REGISTERED PROFESSIONAL ENGINEER  |
| Approved: <b>Jarrett Lancer</b><br>REGISTERED PROFESSIONAL ENGINEER  |
| Approved: <b>Darren Foray</b><br>REGISTERED PROFESSIONAL ENGINEER    |
| Date: 03 July, 2023  |

U.S. ARMY CORPS OF ENGINEERS  
ST. LOUIS DISTRICT  
ST. LOUIS, MISSOURI

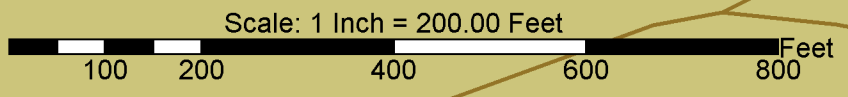
SURVEYED BY  
PRAIRIE ENGINEERS, P.C.  
404 N. MAIN STREET  
COLUMBIA, IL. 62236

MIDDLE MISSISSIPPI RIVER  
PRE DREDGE SURVEY  
RIVER MILES 241.3 - 240.9



July 3, 2023  
INTERPOLATED WATER SURFACE ELEVATIONS

| MILE    | MP     | WS 12:00 | WS 15:00 | MP DIFF 12:00 | MP DIFF 15:00 |
|---------|--------|----------|----------|---------------|---------------|
| LD25 TW |        |          |          |               |               |
| 241.2   | 418.50 | 422.60   | 422.35   | 4.10          | 3.85          |
| 241.0   | 418.49 | 422.57   | 422.32   | 4.08          | 3.83          |
| 240.0   | 418.46 | 422.43   | 422.20   | 3.97          | 3.74          |
| Dixon   |        |          |          |               |               |
| 228.3   | 418.10 | 420.72   | 420.72   | 2.62          | 2.62          |



- PRE DREDGE SURVEY
- Sounded 03 July, 2023 by Prairie Enginners, P.C.
  - Horizontal Datum NAD83(2011) Missouri East, Vertical Datum NGVD29
  - Depths shown are below Minimum Pool (MP)
  - Legend for the navigation aids can be found at [nauticalcharts.noaa.gov/publications/us-chart-1.html](http://nauticalcharts.noaa.gov/publications/us-chart-1.html)
  - Depths shown are below Minimum Pool (MP)  
Red depths are between 9 feet, Minimum Pool (MP) and the surface.  
Orange depths are 9 to 11 feet below Minimum Pool (MP)  
Green depths are 11 to 13 feet below Minimum Pool (MP)  
Blue depths are 13 to 15 feet below Minimum Pool (MP)  
Black depths are 15 feet and greater are below Minimum Pool (MP)

**PRELIMINARY**

