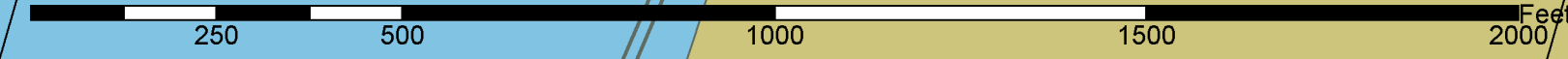




Scale: 1 Inch = 250.00 Feet

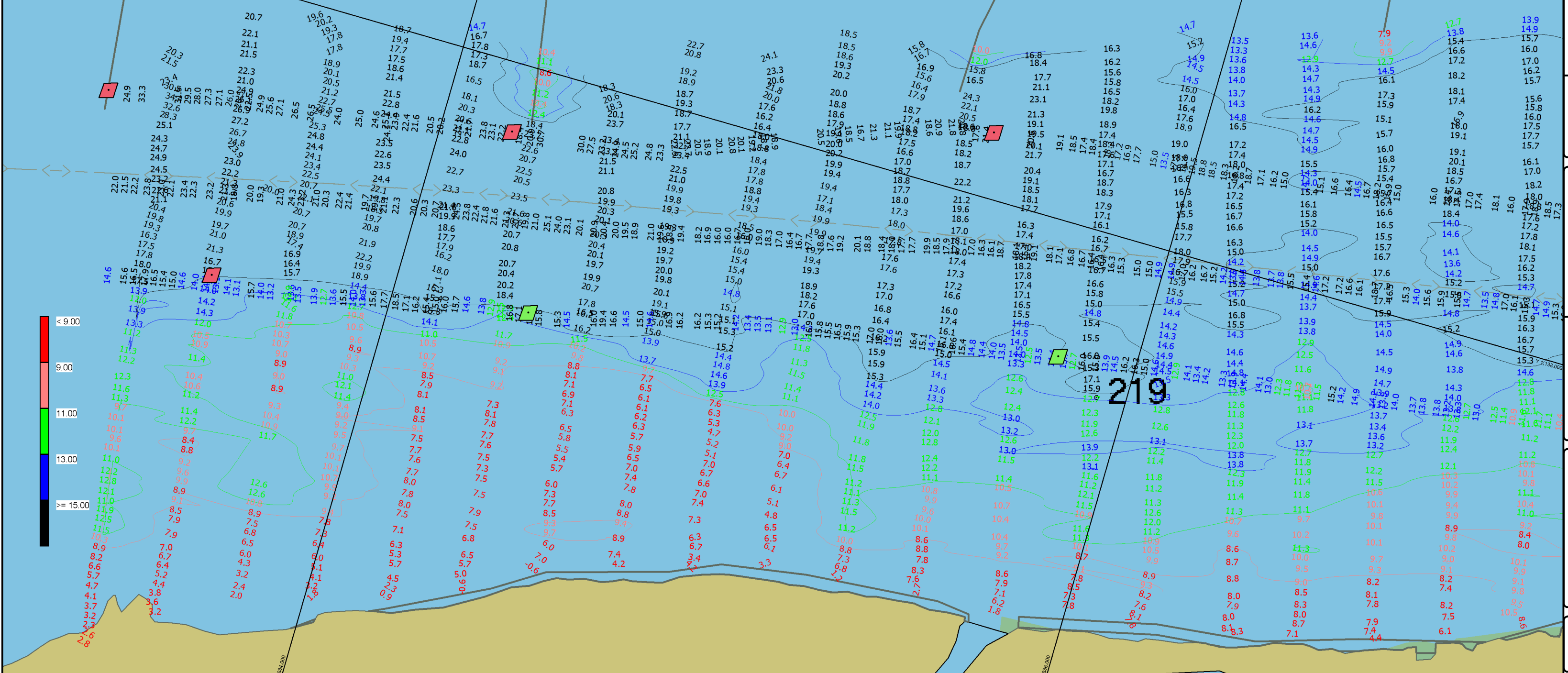


- PRE DREDGE SURVEY
- Sounded 02 October, 2023 by Prairie Engineers, P.C.
 - Horizontal Datum NAD83(2011) Missouri East, Vertical Datum NGVD29
 - Depths shown are below Minimum Pool (MP)
 - Legend for the navigation aids can be found at nauticalcharts.noaa.gov/publications/us-chart-1.html
 - Depths shown are below Minimum Pool (MP)
 Red depths are between 9 feet, Minimum Pool (MP)
 Orange depths are 9 to 11 feet below Minimum Pool (MP)
 Green depths are 11 to 13 feet below Minimum Pool (MP)
 Blue depths are 13 to 15 feet below Minimum Pool (MP)
 Black depths are 15 feet and greater are below Minimum Pool (MP)
 - This deliverable complies with the Quality Control Plan developed by Prairie Engineers, P.C. and with the procedures and requirements outlined in the USACE Engineering manual ER 1110-2-1003.

October 02, 2023
INTERPOLATED WATER SURFACE ELEVATIONS

MILE	MP	WS 12:00	WS 17:00	MP DIFF 12:00	MP DIFF 17:00
220.0	418.02	419.70	419.65	1.68	1.63
219.0	418.01	419.68	419.63	1.67	1.62
218.0	418.00	419.57	419.60	1.57	1.60
217.0	417.73	419.64	419.59	1.91	1.86

PRELIMINARY



DATES OF SURVEY:

02 October, 2023

Scale: ONE INCH = 250 FEET

FIELD BOOKS:

FILE NO.:

REQUEST NO.:

Approved: Dennis Hill
 U.S. ARMY CORPS OF ENGINEERS
 ST. LOUIS DISTRICT
 ST. LOUIS, MISSOURI

Approved: Kimble Slaton
 CIVIL ENGINEERING TECHNICIAN

Approved: Jarrett Lancer
 ASST. CHIEF OF SURVEY

Approved: Darren Foray
 CHIEF OF SURVEY

Date: 13 October, 2023

SURVEYED BY
 PRAIRIE ENGINEERS, P.C.
 404 N. MAIN STREET
 COLUMBIA, IL 62236

MIDDLE MISSISSIPPI RIVER
 PRE DREDGE SURVEY
 RIVER MILES 219.5-217.0

PRE DREDGE SURVEY

- Sounded 02 October, 2023 by Prairie Engineers, P.C.
- Horizontal Datum NAD83(2011) Missouri East, Vertical Datum NGVD29
- Depths shown are below Minimum Pool (MP)
- Legend for the navigation aids can be found at nauticalcharts.noaa.gov/publications/us-chart-1.html
- Depths shown are below Minimum Pool (MP)
 Red depths are between 9 feet, Minimum Pool (MP)
 Orange depths are 9 to 11 feet below Minimum Pool (MP)
 Green depths are 11 to 13 feet below Minimum Pool (MP)
 Blue depths are 13 to 15 feet below Minimum Pool (MP)
 Black depths are 15 feet and greater are below Minimum Pool (MP)
- This deliverable complies with the Quality Control Plan developed by Prairie Engineers, P.C. and with the procedures and requirements outlined in the USACE Engineering manual ER 1110-2-1003.

October 02, 2023
 INTERPOLATED WATER SURFACE ELEVATIONS

MILE	MP	WS 12:00	WS 17:00	MP DIFF 12:00	MP DIFF 17:00
220.0	418.02	419.70	419.65	1.68	1.63
219.0	418.01	419.68	419.63	1.67	1.62
218.0	418.00	419.65	419.60	1.57	1.60
217.0	417.73	419.64	419.59	1.91	1.86



DATES OF SURVEY:	
02 October, 2023	17:00 = 15:81
Gage Records 02 October, 2023	
Grafton Gage 12:00 = 15:86	

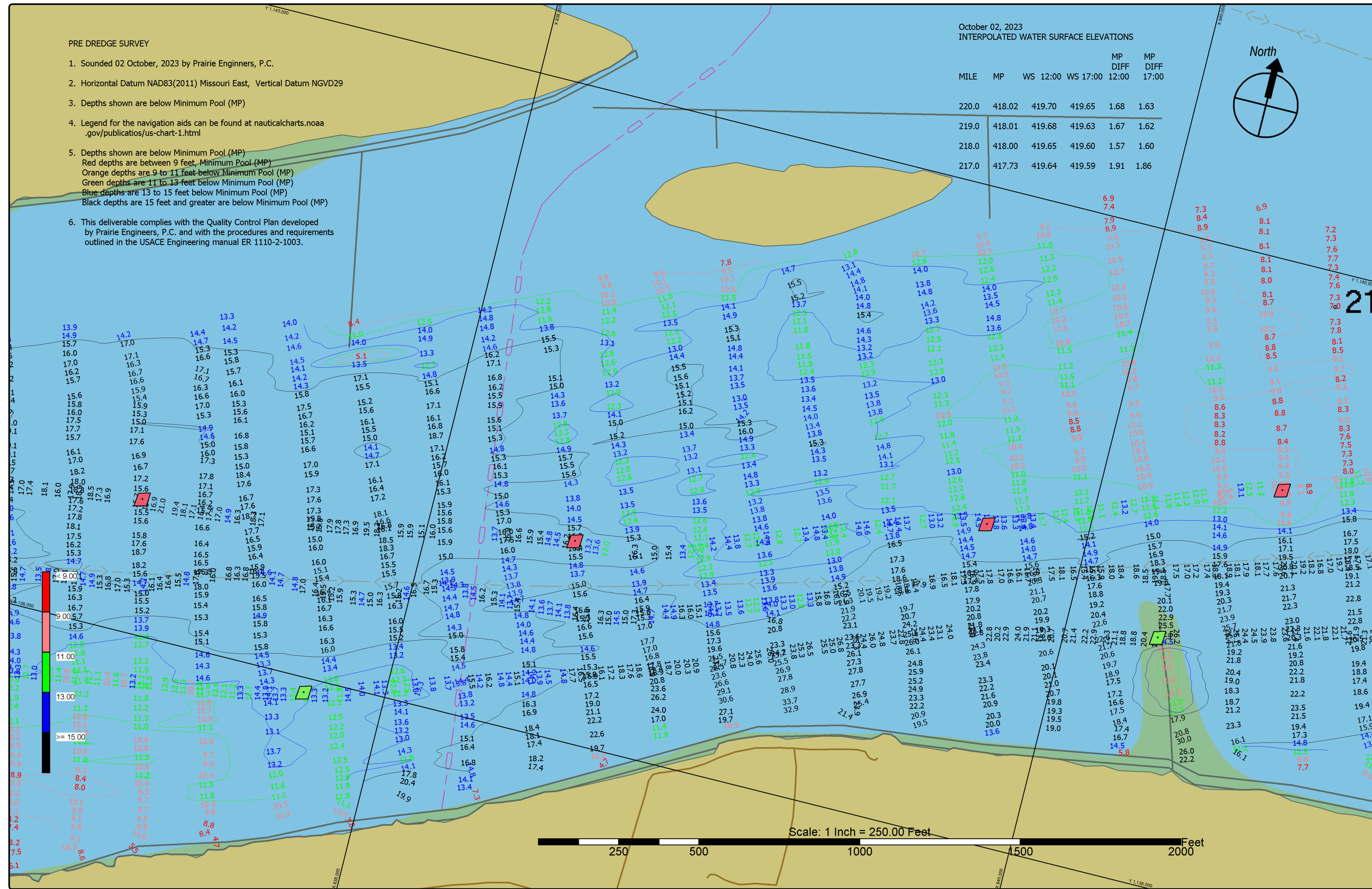
SCALE:	FIELD BOOKS:
ONE INCH = 250 FEET	
FILE NO. / REQUEST NO.:	

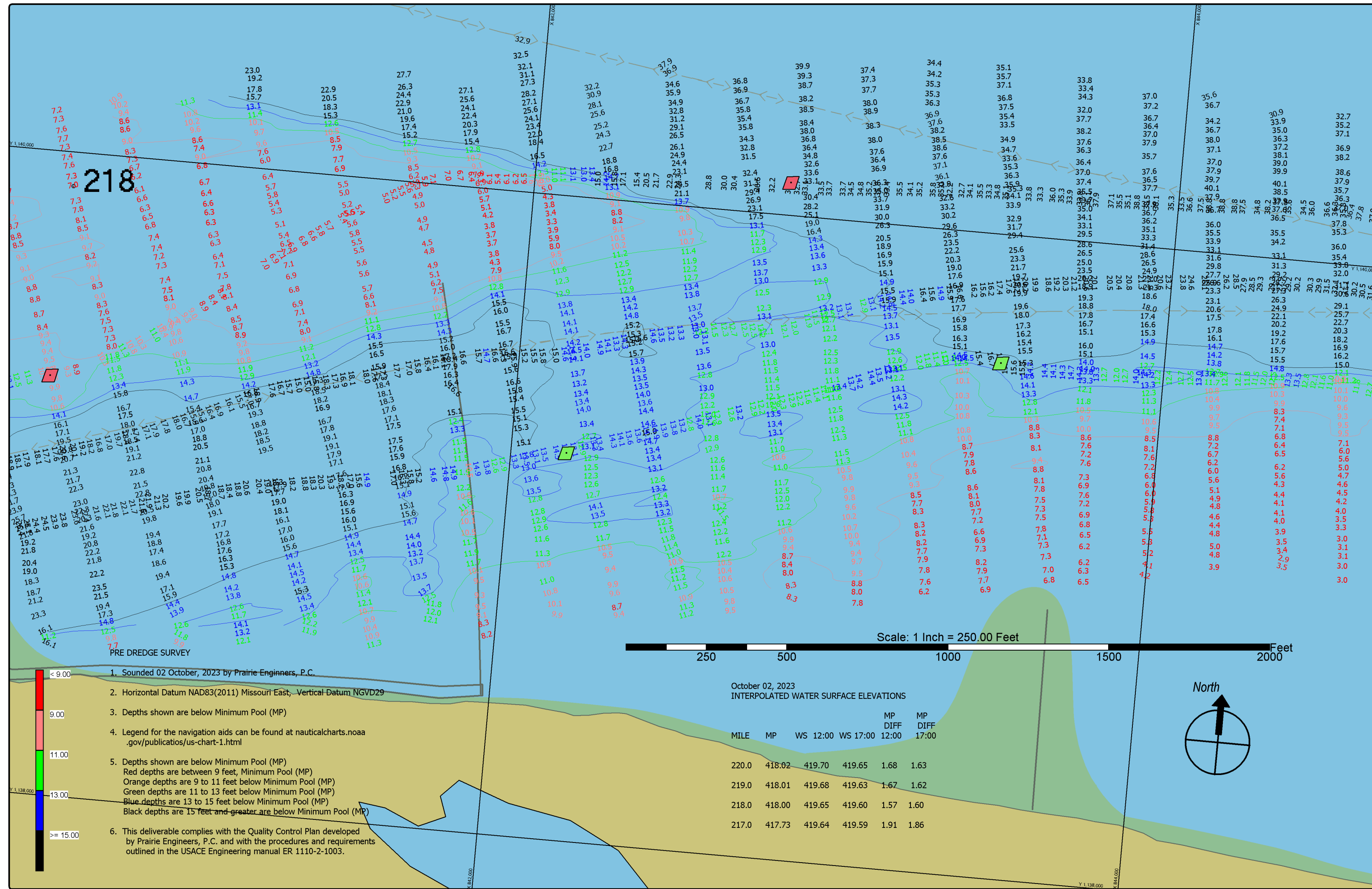
Approved: Dennis Hill CHIEF OF SURVEY	Date: 13 October, 2023
Approved: Kimble Slaton CIVIL ENGINEERING TECHNICIAN	
Approved: Jarrett Lancer CIVIL ENGINEER	
Approved: Darren Foray CHIEF OF SURVEY	

U.S. ARMY CORPS OF ENGINEERS
 ST. LOUIS DISTRICT
 ST. LOUIS, MISSOURI

SURVEYED BY
 PRAIRIE ENGINEERS, P.C.
 404 N. MAIN STREET
 COLUMBIA, IL. 62236

MIDDLE MISSISSIPPI RIVER
 PRE DREDGE SURVEY
 RIVER MILES 219.5-217.0





Gage Records 02 October, 2023
Grafton Gage 12:00 = 15.86 17:00 = 15.81

DATES OF SURVEY: 02 October, 2023
SCALE: ONE INCH = 250 FEET
FIELD BOOKS:
FILE NO.:
REQUEST NO.:

Approved: Dennis Hill
Approved: Kimble Slaton
Approved: Jarrett Lancer
Approved: Darren Foray
Date: 13 October, 2023

U.S. ARMY CORPS OF ENGINEERS
ST. LOUIS DISTRICT
ST. LOUIS, MISSOURI

SURVEYED BY
PRAIRIE ENGINEERS, P.C.
404 N. MAIN STREET
COLUMBIA, IL 62236

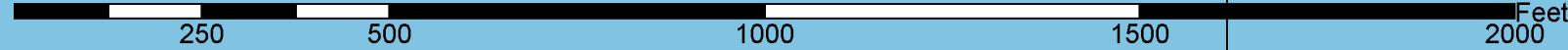
MIDDLE MISSISSIPPI RIVER
PRE DREDGE SURVEY
RIVER MILES 219.5-217.0

- Sounded 02 October, 2023 by Prairie Engineers, P.C.
- Horizontal Datum NAD83(2011) Missouri East, Vertical Datum NGVD29
- Depths shown are below Minimum Pool (MP)
- Legend for the navigation aids can be found at nauticalcharts.noaa.gov/publications/us-chart-1.html
- Depths shown are below Minimum Pool (MP)
Red depths are between 9 feet, Minimum Pool (MP)
Orange depths are 9 to 11 feet below Minimum Pool (MP)
Green depths are 11 to 13 feet below Minimum Pool (MP)
Blue depths are 13 to 15 feet below Minimum Pool (MP)
Black depths are 15 feet and greater are below Minimum Pool (MP)
- This deliverable complies with the Quality Control Plan developed by Prairie Engineers, P.C. and with the procedures and requirements outlined in the USACE Engineering manual ER 1110-2-1003.

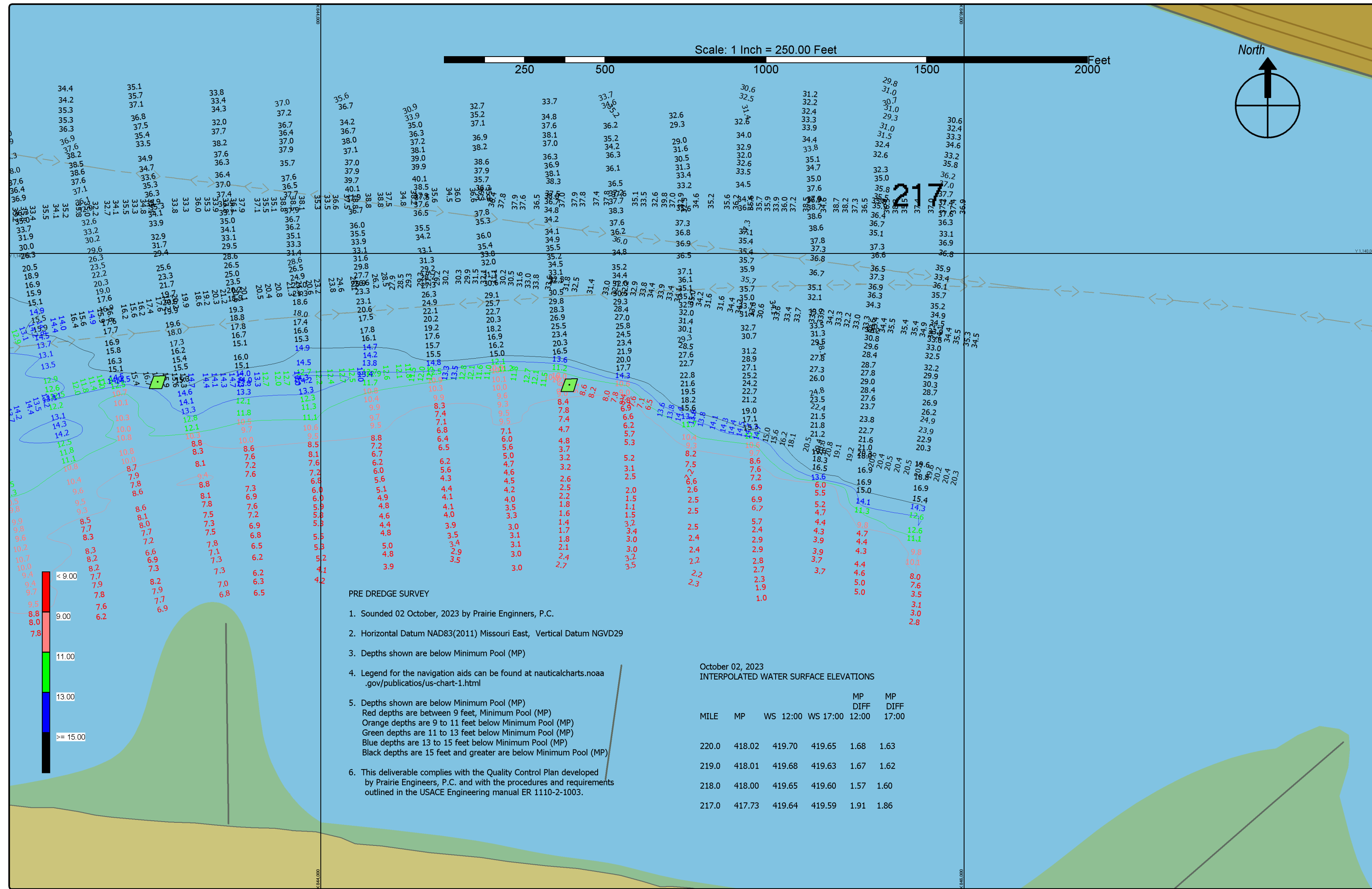
October 02, 2023
INTERPOLATED WATER SURFACE ELEVATIONS

MILE	MP	WS 12:00	WS 17:00	MP DIFF 12:00	MP DIFF 17:00
220.0	418.02	419.70	419.65	1.68	1.63
219.0	418.01	419.68	419.63	1.67	1.62
218.0	418.00	419.65	419.60	1.57	1.60
217.0	417.73	419.64	419.59	1.91	1.86

Scale: 1 Inch = 250.00 Feet



Gage Records 02 October, 2023
Grafton Gage 12:00 = 15.86 17:00 = 15.81



- PRE DREDGE SURVEY**
- Sounded 02 October, 2023 by Prairie Engineers, P.C.
 - Horizontal Datum NAD83(2011) Missouri East, Vertical Datum NGVD29
 - Depths shown are below Minimum Pool (MP)
 - Legend for the navigation aids can be found at nauticalcharts.noaa.gov/publications/us-chart-1.html
 - Depths shown are below Minimum Pool (MP)
 Red depths are between 9 feet, Minimum Pool (MP)
 Orange depths are 9 to 11 feet below Minimum Pool (MP)
 Green depths are 11 to 13 feet below Minimum Pool (MP)
 Blue depths are 13 to 15 feet below Minimum Pool (MP)
 Black depths are 15 feet and greater are below Minimum Pool (MP)
 - This deliverable complies with the Quality Control Plan developed by Prairie Engineers, P.C. and with the procedures and requirements outlined in the USACE Engineering manual ER 1110-2-1003.

October 02, 2023
INTERPOLATED WATER SURFACE ELEVATIONS

MILE	MP	WS 12:00	WS 17:00	MP DIFF 12:00	MP DIFF 17:00
220.0	418.02	419.70	419.65	1.68	1.63
219.0	418.01	419.68	419.63	1.67	1.62
218.0	418.00	419.65	419.60	1.57	1.60
217.0	417.73	419.64	419.59	1.91	1.86

DATES OF SURVEY:	02 October, 2023
SCALE:	ONE INCH = 250 FEET
FIELD BOOKS:	
FILE NO.:	
REQUEST NO.:	

Approved: Dennis Hill PROJECT MANAGER	Approved: Kimble Slaton CIVIL ENGINEERING TECHNICIAN
Approved: Jarrett Lancer ASST. CHIEF OF SURVEY	Approved: Darren Foray CHIEF OF SURVEY
Date: 13 October, 2023	

U.S. ARMY CORPS OF ENGINEERS
ST. LOUIS DISTRICT
ST. LOUIS, MISSOURI

SURVEYED BY
PRAIRIE ENGINEERS, P.C.
404 N. MAIN STREET
COLUMBIA, IL 62236

MIDDLE MISSISSIPPI RIVER
PRE DREDGE SURVEY
RIVER MILES 219.5-217.0