

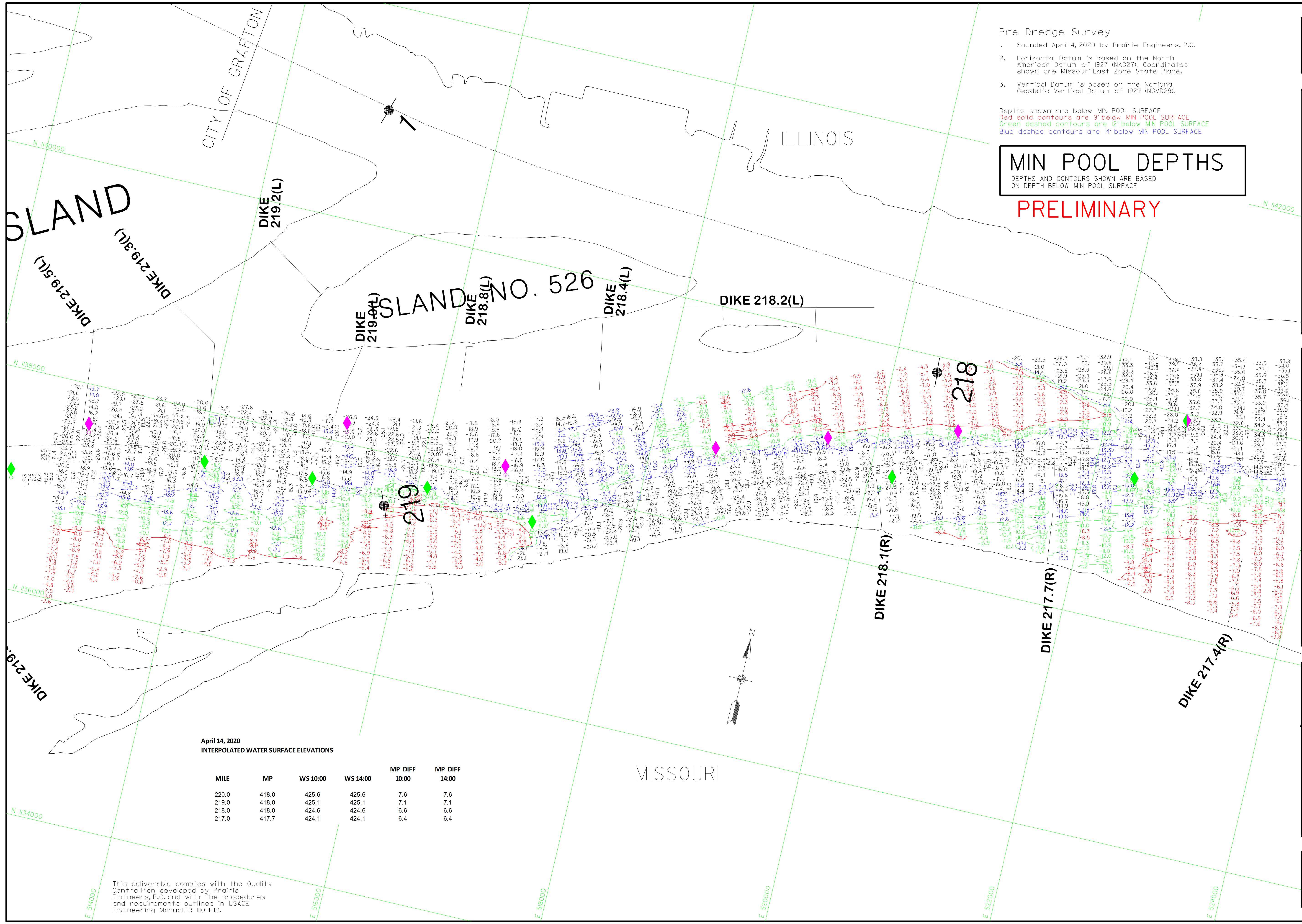
- Pre Dredge Survey
- Sounded April 14, 2020 by Prairie Engineers, P.C.
 - Horizontal Datum is based on the North American Datum of 1927 (NAD27). Coordinates shown are Missouri East Zone State Plane.
 - Vertical Datum is based on the National Geodetic Vertical Datum of 1929 (NGVD29).

Depths shown are below MIN POOL SURFACE
 Red solid contours are 9' below MIN POOL SURFACE
 Green dashed contours are 12' below MIN POOL SURFACE
 Blue dashed contours are 14' below MIN POOL SURFACE

MIN POOL DEPTHS

DEPTHS AND CONTOURS SHOWN ARE BASED ON DEPTH BELOW MIN POOL SURFACE

PRELIMINARY



April 14, 2020
 INTERPOLATED WATER SURFACE ELEVATIONS

MILE	MP	WS		MP DIFF	
		10:00	14:00	10:00	14:00
220.0	418.0	425.6	425.6	7.6	7.6
219.0	418.0	425.1	425.1	7.1	7.1
218.0	418.0	424.6	424.6	6.6	6.6
217.0	417.7	424.1	424.1	6.4	6.4

This deliverable complies with the Quality Control Plan developed by Prairie Engineers, P.C. and with the procedures and requirements outlined in USACE Engineering Manual ER 1110-1-2.

GAGE RECORD	ALTON	GRAFTON	DIXON LANDING	400.0	203.0	44.0
WATER SURFACE	403.8	28.0	48.0			
ZERO NGVD	400.0	28.3	48.1			
MILE						
MIN POOL				424.6 (06/00)	417.2 (06/00)	417.2 (06/00)
				424.6 (06/00)	417.2 (06/00)	417.2 (06/00)

Survey Date: April 14, 2020	Submitted:
Drawn by: PCE by:	Chief, Engr. Data Mngt. Sect.
Reviewed by:	Chief, Engr. Data Mngt. Sect.
APPROVED:	Chief, Engr. Data Mngt. Sect.
Plot date: 4/15/2020	Plot scale: 1"=400'

U.S. ARMY ENGINEER DIVISION CORPS OF ENGINEERS ST. LOUIS, MISSOURI	UPPER MISSISSIPPI RIVER BASIN MISSISSIPPI RIVER
--	--

240 METERS	800 FEET
400	800
0	0
THE INFORMATION ON THIS MAP REPRESENTS THE RESULTS OF A SURVEY CONDUCTED UNDER THE GENERAL CONDITIONS OF THE USACE SURVEYING MANUAL. THE INFORMATION IS NOT TO BE USED FOR ANY OTHER PURPOSE.	
PRE DREDGE SURVEY MILE 219.5 - 217.4	