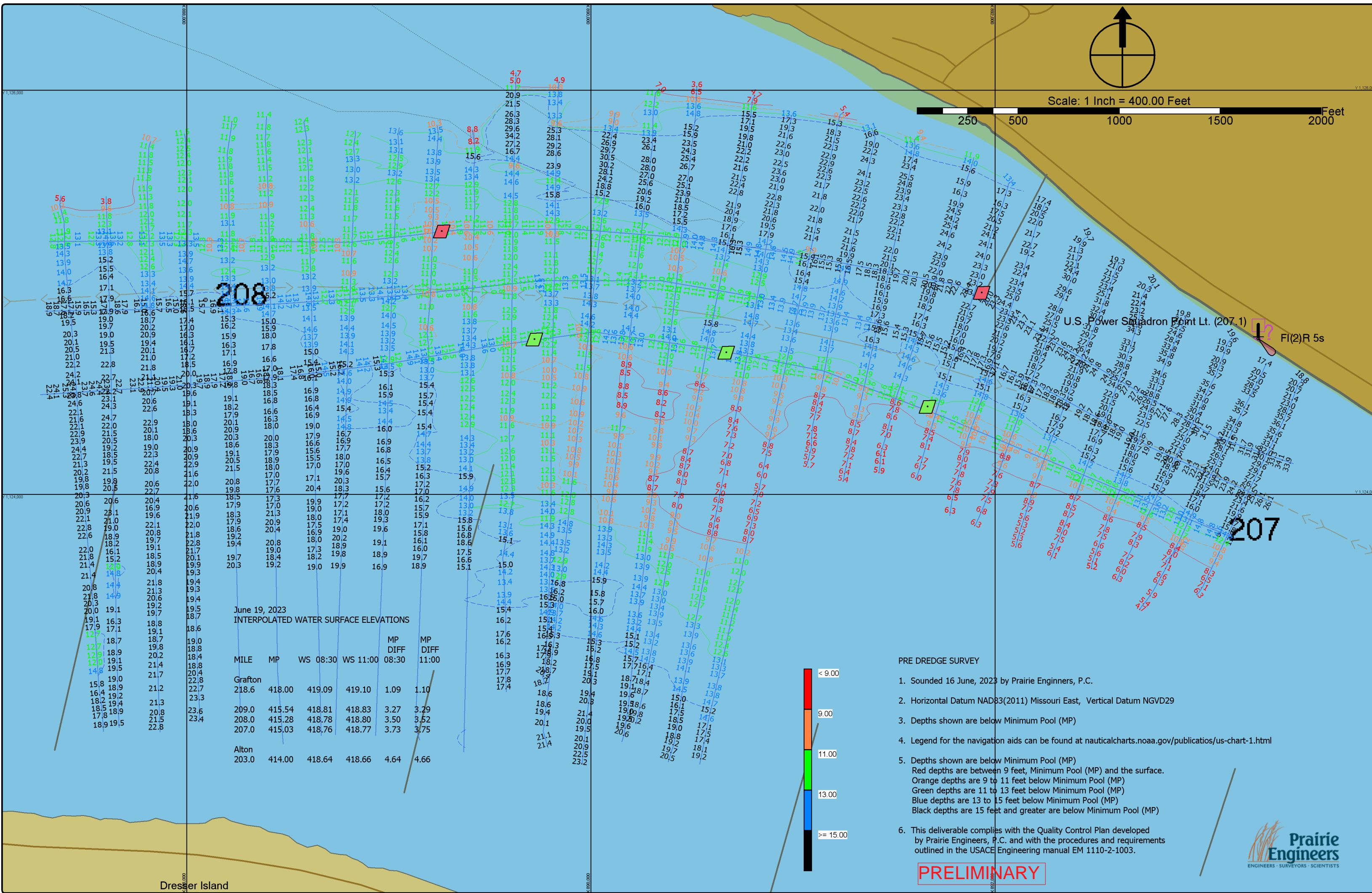
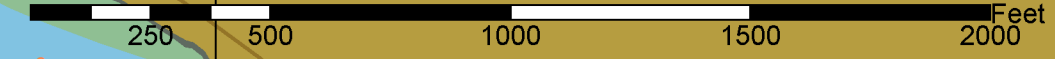
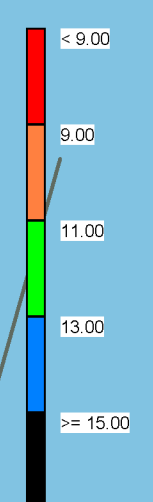


Scale: 1 Inch = 400.00 Feet



June 19, 2023  
INTERPOLATED WATER SURFACE ELEVATIONS

MILE	MP	WS 08:30	WS 11:00	MP DIFF 08:30	MP DIFF 11:00
Grafton					
218.6	418.00	419.09	419.10	1.09	1.10
209.0	415.54	418.81	418.83	3.27	3.29
208.0	415.28	418.78	418.80	3.50	3.52
207.0	415.03	418.76	418.77	3.73	3.75
Alton					
203.0	414.00	418.64	418.66	4.64	4.66



PRE DREDGE SURVEY

- Sounded 16 June, 2023 by Prairie Engineers, P.C.
- Horizontal Datum NAD83(2011) Missouri East, Vertical Datum NGVD29
- Depths shown are below Minimum Pool (MP)
- Legend for the navigation aids can be found at [nauticalcharts.noaa.gov/publications/us-chart-1.html](http://nauticalcharts.noaa.gov/publications/us-chart-1.html)
- Depths shown are below Minimum Pool (MP)  
Red depths are between 9 feet, Minimum Pool (MP) and the surface.  
Orange depths are 9 to 11 feet below Minimum Pool (MP)  
Green depths are 11 to 13 feet below Minimum Pool (MP)  
Blue depths are 13 to 15 feet below Minimum Pool (MP)  
Black depths are 15 feet and greater are below Minimum Pool (MP)
- This deliverable complies with the Quality Control Plan developed by Prairie Engineers, P.C. and with the procedures and requirements outlined in the USACE Engineering manual EM 1110-2-1003.

**PRELIMINARY**



Gage Records 16 June, 2023

	08:30 = 15.30	11:00 = 15.31
Grafton	08:30 = 19.64	11:00 = 19.66
Alton		

DATES OF SURVEY:

SCALE: ONE INCH = 400 FEET

FIELD BOOKS:

APPROVED:

U.S. ARMY CORPS OF ENGINEERS  
ST. LOUIS DISTRICT  
ST. LOUIS, MISSOURI

APPROVED: **Jarrett Langer**  
CIVIL ENGINEERING TECHNICIAN

APPROVED: **Jarrett Langer**  
ASST. CHIEF OF SURVEY

APPROVED: **Darren Foray**  
CHIEF OF SURVEY

Date: 19 June, 2023

SURVEYED BY  
PRAIRIE ENGINEERS, P.C.  
404 N. MAIN STREET  
COLUMBIA, IL. 62236

MIDDLE MISSISSIPPI RIVER  
PRE DREDGE SURVEY  
RIVER MILES 208.1 - 207.0