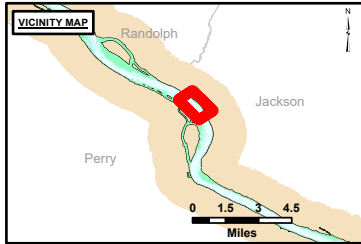


DISCLAIMER: The United States Government Lenders...
 Distribution Liability: The data represents the results of data collection...
 Accuracy: The data represents the results of data collection...
 Use: This map is for informational purposes only and should not be used for navigation or other critical purposes.

Surveyed By:	Plotted By:	Checked By:

Survey Information
 RED_ROCK_UPPER_MISSISSIPPI
 UM_SL_RRC_20241030_BD_1
 30 October 2024



LAYERS

- River Mile
- Sailing Line
- 9' below LWRP2014 Surface
- 12' below LWRP2014 Surface
- 14' below LWRP2014 Surface

Depths shown are below LWRP2014 Surface

Aids to Navigation

- Green
- Red
- Junction
- Green Buoy
- Red Buoy

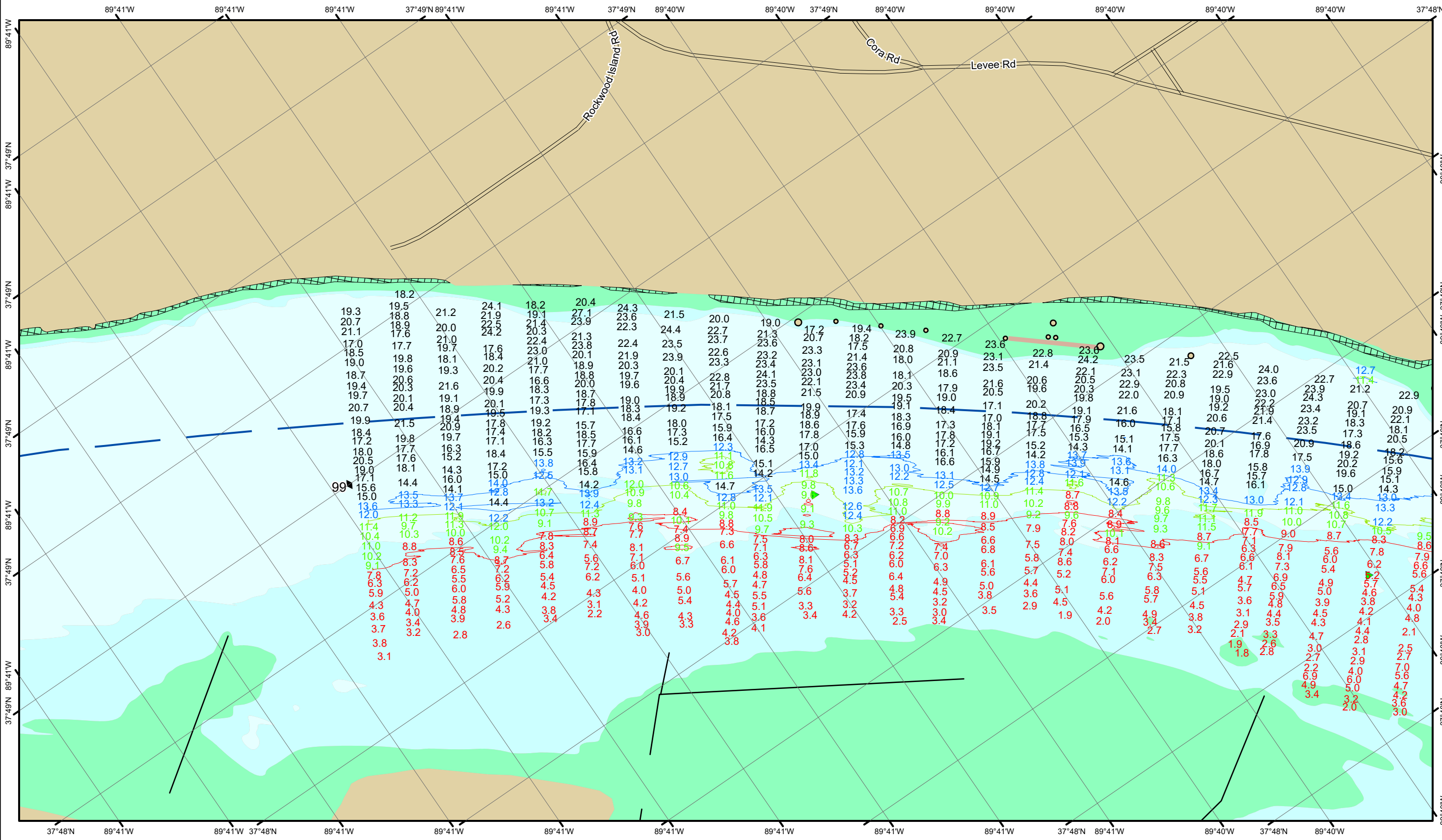
Structures and Lines

- Training Structure
- Revetment
- Tower/Power Poles
- Electrical Lines
- Fiber Optic Lines
- Pipelines

Scale: 0, 250, 500, 750, 1,000 Feet

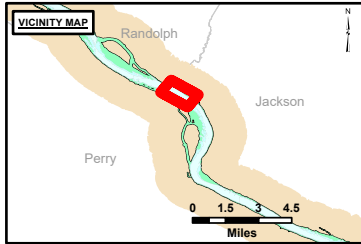
NOTES:
 Horizontal Coordinate System: North American Datum of 1983 (NAD83), projected to the State Plane Coordinate System (SPCS), Missouri East Zone. Distance units in U.S. Survey Feet.
 Vertical Datum: Soundings are shown in feet and indicate depths below the 2014 Low Water Reference Plane.
 The information depicted on this map represents the results of a survey conducted on the date indicated and can only be considered to represent the general condition existing at that time.
 The location of navigation aids are based on and provided by the U.S. Coast Guard.

Reach Number
 10 of 17



DISCLAIMER: The United States Government Lenders...
 Distribution Liability: The data represents the results of data collection...
 Accuracy: The data represents the results of data collection...
 Use: The data represents the results of data collection...

Surveyed By:	Plotted By:	Checked By:



LAYERS

- River Mile
- Sailing Line
- 9' below LWRP2014 Surface
- 12' below LWRP2014 Surface
- 14' below LWRP2014 Surface

Depths shown are below LWRP2014 Surface

Aids to Navigation

- Green
- Red
- Junction
- Green Buoy
- Red Buoy

Training Structure

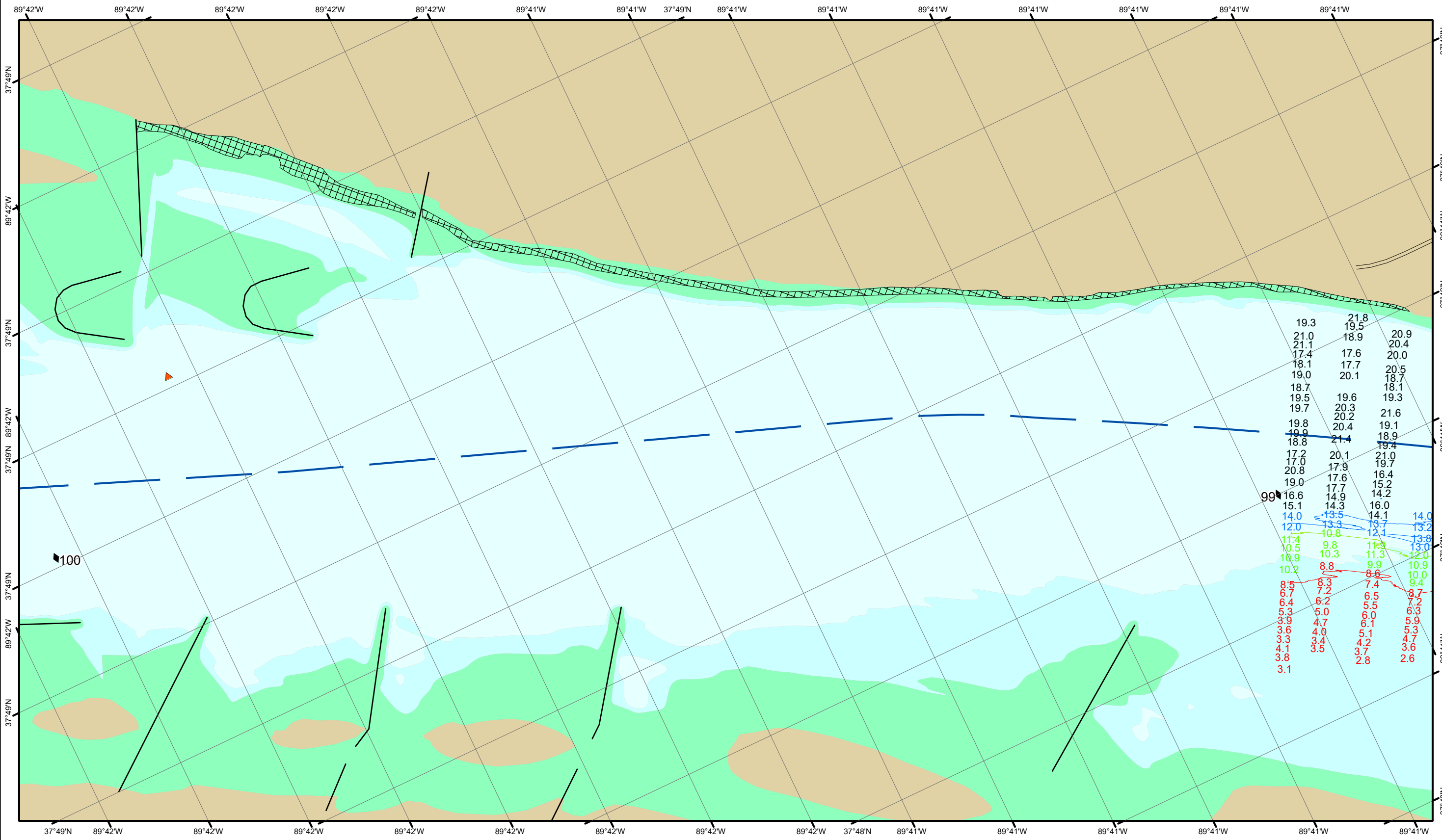
- Retevment
- Tower/Power Poles
- Electrical Lines
- Fiber Optic Lines
- Pipelines

Feet scale: 0, 250, 500, 750, 1,000

NOTES:
 Horizontal Coordinate System: North American Datum of 1983 (NAD83), projected to the State Plane Coordinate System (SPCS), Missouri East Zone. Distance units in U.S. Survey Feet.
 Vertical Datum: Soundings are shown in feet and indicate depths below the 2014 Low Water Reference Plane.
 The information depicted on this map represents the results of a survey conducted on the date indicated and can only be considered to represent the general condition existing at that time.
 The location of navigation aids are based on and provided by the U.S. Coast Guard.

Survey Information
 RED_ROCK_UPPER_MISSISSIPPI
 UM_SL_RRC_20241030_BD_1
 30 October 2024

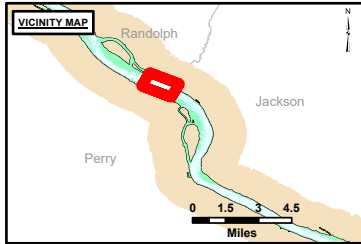
Reach Number
 11 of 17



DISCLAIMER: The United States Government furnishes this information as a service to the public. It is not intended to be used for any purpose other than that for which it was prepared. The United States Government makes no warranty, express or implied, as to the accuracy, reliability, or completeness of the information. The user assumes all liability for any use of the information other than that for which it was prepared. The United States Government shall be held harmless for any damage or loss resulting from the use of the information. These data belong to the Government. Therefore, the recipient may not transfer these data to others without the approval of the Government.

Surveyed By:	Plotted By:	Checked By:
Number:	Document:	Approved:

Survey Information
 RED_ROCK_UPPER_MISSISSIPPI
 UM_SL_RRC_20241030_BD_1
 30 October 2024



LAYERS

- River Mile
- Sailing Line
- 9' below LWRP2014 Surface
- 12' below LWRP2014 Surface
- 14' below LWRP2014 Surface

Depths shown are below LWRP2014 Surface

Aids to Navigation

- Green
- Red
- Junction
- Green Buoy
- Red Buoy

Structures

- Training Structure
- Revetment
- Tower/Power Poles
- Electrical Lines
- Fiber Optic Lines
- Pipelines

Feet
0 250 500 750 1,000

NOTES:
 Horizontal Coordinate System:
 North American Datum of 1983 (NAD83), projected to the State Plane Coordinate System (SPCS), Missouri East Zone. Distance units in U.S. Survey Feet.
 Vertical Datum:
 Soundings are shown in feet and indicate depths below the 2014 Low Water Reference Plane.
 The information depicted on this map represents the results of a survey conducted on the date indicated and can only be considered to represent the general condition existing at that time.
 The location of navigation aids are based on and provided by the U.S. Coast Guard.

Reach Number
 12 of 17