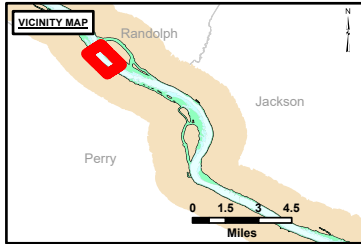


DISCLAIMER: The United States Government makes no warranty, express or implied, regarding the accuracy, reliability, or completeness of any data provided. The data is provided for informational purposes only and should not be used for any purpose other than that intended. The user assumes all liability for any use of the data for purposes not intended by the U.S. Army Corps of Engineers. The U.S. Army Corps of Engineers makes no warranty, express or implied, regarding the accuracy, reliability, or completeness of any data provided. The data is provided for informational purposes only and should not be used for any purpose other than that intended. The user assumes all liability for any use of the data for purposes not intended by the U.S. Army Corps of Engineers.

U.S. ARMY CORPS OF ENGINEERS		
Surveyed By:	Plotted By:	Checked By:

Survey Information
 RED_ROCK_UPPER_MISSISSIPPI
 UM_SL_RRC_20231031_BD_1
 31 October 2023



LAYERS

- River Mile
- Sailing Line
- 9' below LWRP2014 Surface
- 12' below LWRP2014 Surface
- 14' below LWRP2014 Surface

Depths shown are below LWRP2014 Surface

Aids to Navigation

- Green
- Red
- Junction
- Green Buoy
- Red Buoy

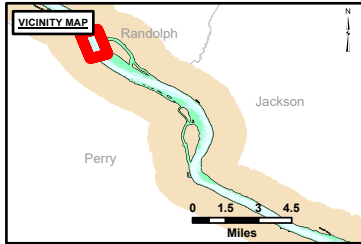
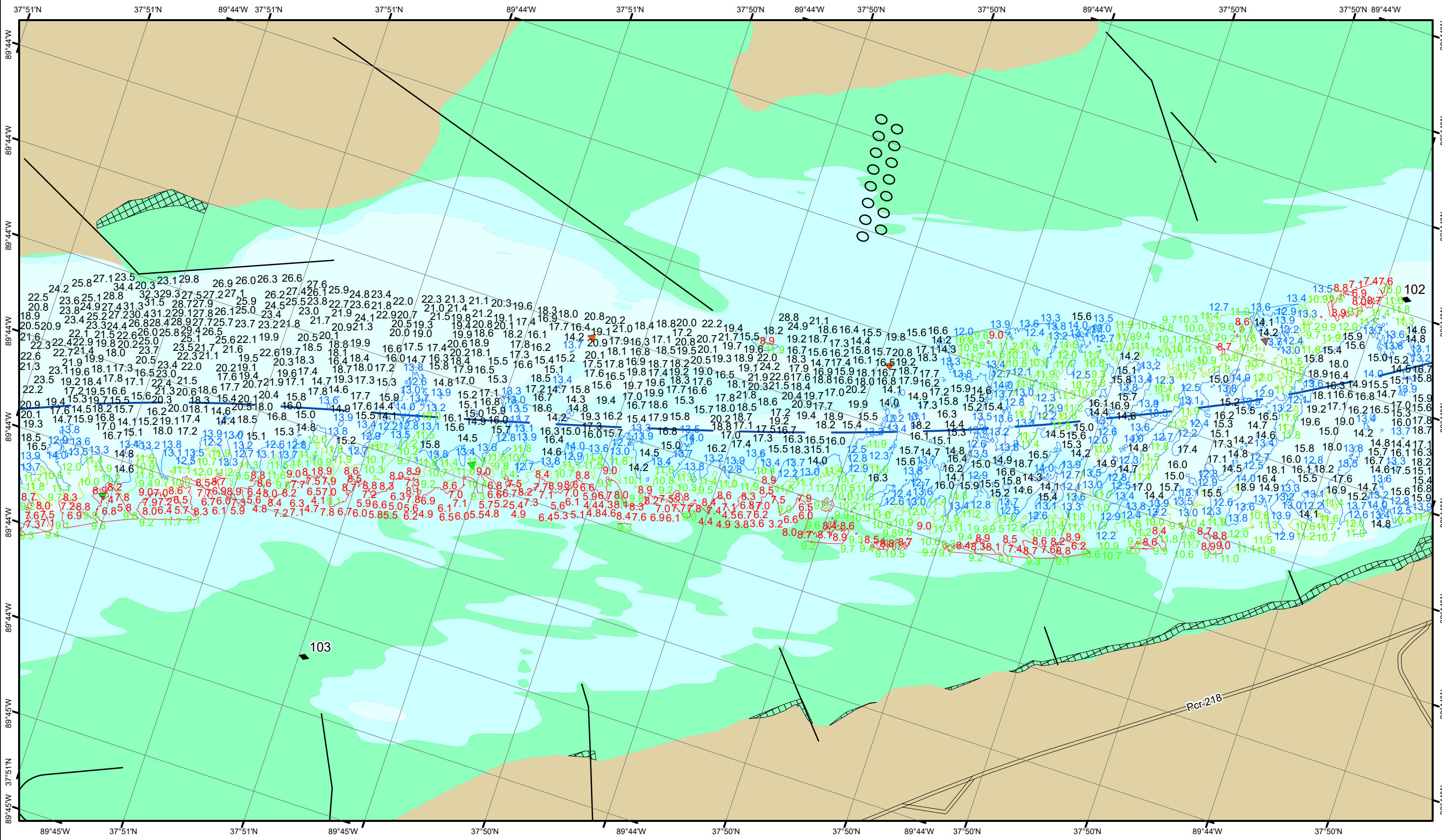
Training Structure

- Revetment
- Tower/Power Poles
- Electrical Lines
- Fiber Optic Lines
- Pipelines

Feet
0 250 500 750 1,000

NOTES:
 Horizontal Coordinate System:
 North American Datum of 1983 (NAD83), projected to the State Plane Coordinate System (SPCS), Missouri East Zone. Distance units in U.S. Survey Feet.
 Vertical Datum:
 Soundings are shown in feet and indicate depths below the 2014 Low Water Reference Plane.
 The information depicted on this map represents the results of a survey conducted on the date indicated and can only be considered to represent the general condition existing at that time.
 The location of navigation aids are based on and provided by the U.S. Coast Guard.

Reach Number
 15 of 17



LAYERS

- River Mile
- Sailing Line
- 9' below LWRP2014 Surface
- 12' below LWRP2014 Surface
- 14' below LWRP2014 Surface

Depths shown are below LWRP2014 Surface

Aids to Navigation

- Green
- Red
- Junction
- Green Buoy
- Red Buoy

Structures

- Training Structure
- Revetment
- Tower/Power Poles
- Electrical Lines
- Fiber Optic Lines
- Pipelines

Scale: 0, 250, 500, 750, 1,000 Feet

NOTES:
 Horizontal Coordinate System:
 North American Datum of 1983 (NAD83), projected to the State Plane Coordinate System (SPCS), Missouri East Zone. Distance units in U.S. Survey Feet.
 Vertical Datum:
 Soundings are shown in feet and indicate depths below the 2014 Low Water Reference Plane.
 The information depicted on this map represents the results of a survey conducted on the date indicated and can only be considered to represent the general condition existing at that time.
 The location of navigation aids are based on and provided by the U.S. Coast Guard.

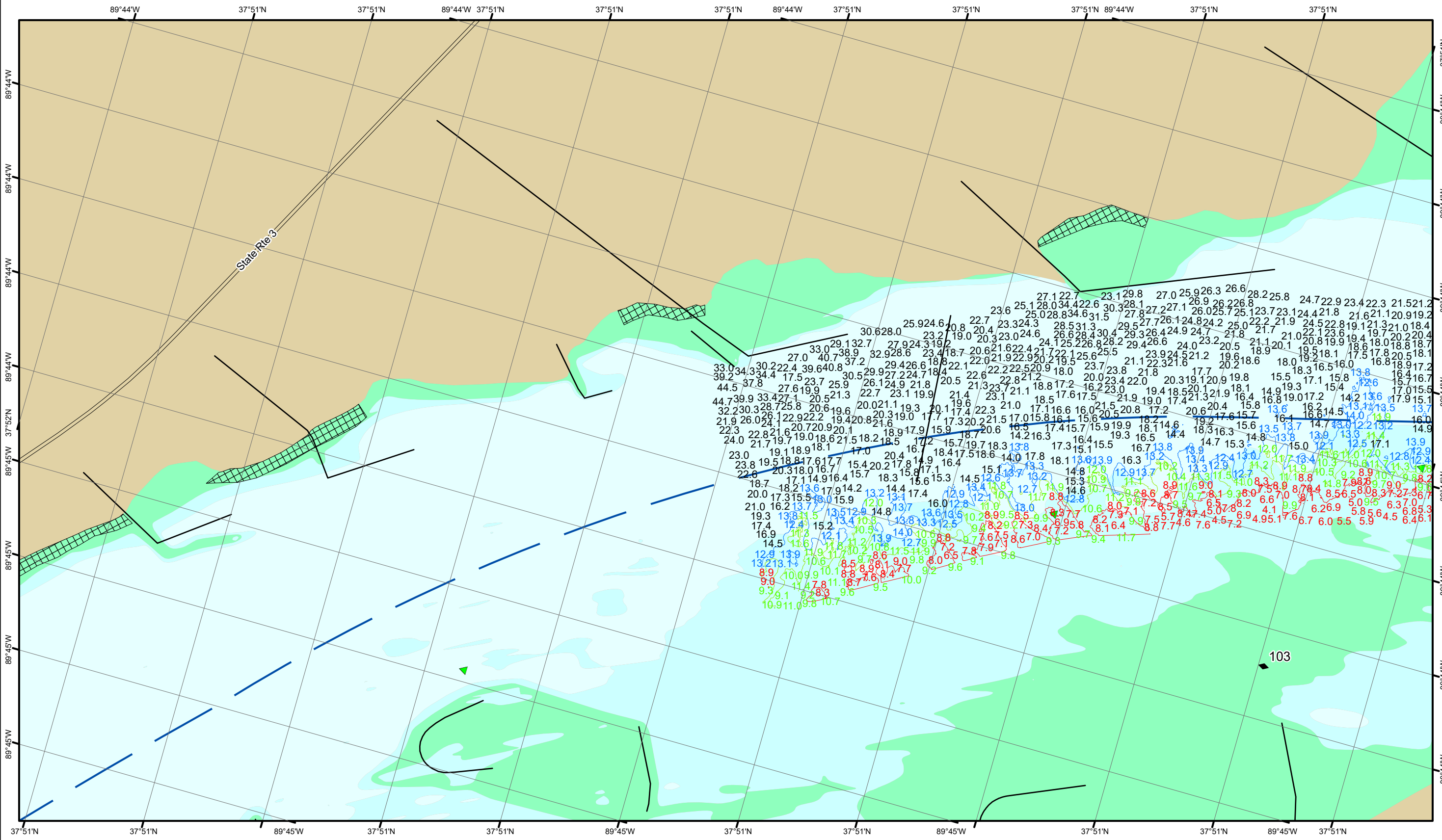


DISCLAIMER: The United States Government neither warrants nor makes any representation, express or implied, regarding the accuracy, reliability, or completeness of any data or information provided. The data is provided for informational purposes only and is not intended for navigation or other critical applications. The user assumes all responsibility for the use of the data. The recipient may not transfer these data to others without the written consent of the Corps of Engineers.

Surveyed By:	Plotted By:	Checked By:

Survey Information
 RED_ROCK_UPPER_MISSISSIPPI
 UM_SL_RRC_20231031_BD_1
 31 October 2023

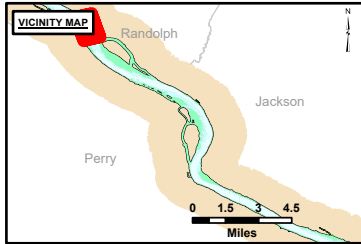
Reach Number
 16 of 17



DISCLAIMER: The United States Government Lenders...
 Distribution Liability: The data represents the results of data collection...
 Accuracy: The data represents the results of data collection...
 Use: This map is for informational purposes only and should not be used for navigation or other critical purposes.

Surveyed By:	Plotted By:	Checked By:

Survey Information
 RED_ROCK_UPPER_MISSISSIPPI
 UM_SL_RRC_20231031_BD_1
 31 October 2023



LAYERS

- River Mile
- Sailing Line
- 9' below LWRP2014 Surface
- 12' below LWRP2014 Surface
- 14' below LWRP2014 Surface

Depths shown are below LWRP2014 Surface

Aids to Navigation

- Green
- Red
- Junction
- Green Buoy
- Red Buoy

Training Structure

- Retevment
- Tower/Power Poles
- Electrical Lines
- Fiber Optic Lines
- Pipelines

Feet
 0 250 500 750 1,000

NOTES:
 Horizontal Coordinate System:
 North American Datum of 1983 (NAD83), projected to the State Plane Coordinate System (SPCS), Missouri East Zone. Distance units in U.S. Survey Feet.
 Vertical Datum:
 Soundings are shown in feet and indicate depths below the 2014 Low Water Reference Plane.
 The information depicted on this map represents the results of a survey conducted on the date indicated and can only be considered to represent the general condition existing at that time.
 The location of navigation aids are based on and provided by the U.S. Coast Guard.

Reach Number
 17 of 17