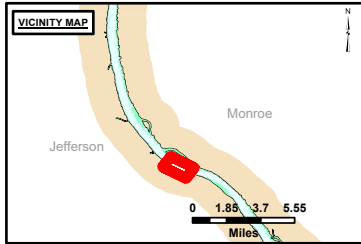


**DISCLAIMER:** The United States Government neither warrants nor makes any representation, express or implied, regarding the accuracy, reliability, or completeness of the information and data furnished. The United States Government shall be held harmless for any loss or damage, including consequential damages, resulting from the use of the information and data furnished. These data belong to the Government. Therefore the recipient may not transfer these data to others without the written consent of the Government.

Surveyed By:	Printed By:	Checked By:

**Survey Information**  
 PROTOTYPE\_REACH\_UPPER\_MISSISSIPPI  
 UM\_SL\_PRC\_20241209\_AD\_1  
 09 December 2024



**LAYERS**

- River Mile
- Sailing Line
- 9' below LWRP2014 Surface
- 12' below LWRP2014 Surface
- 14' below LWRP2014 Surface

Depths shown are below LWRP2014 Surface

**Aids to Navigation**

- Green
- Red
- Junction
- Green Buoy
- Red Buoy

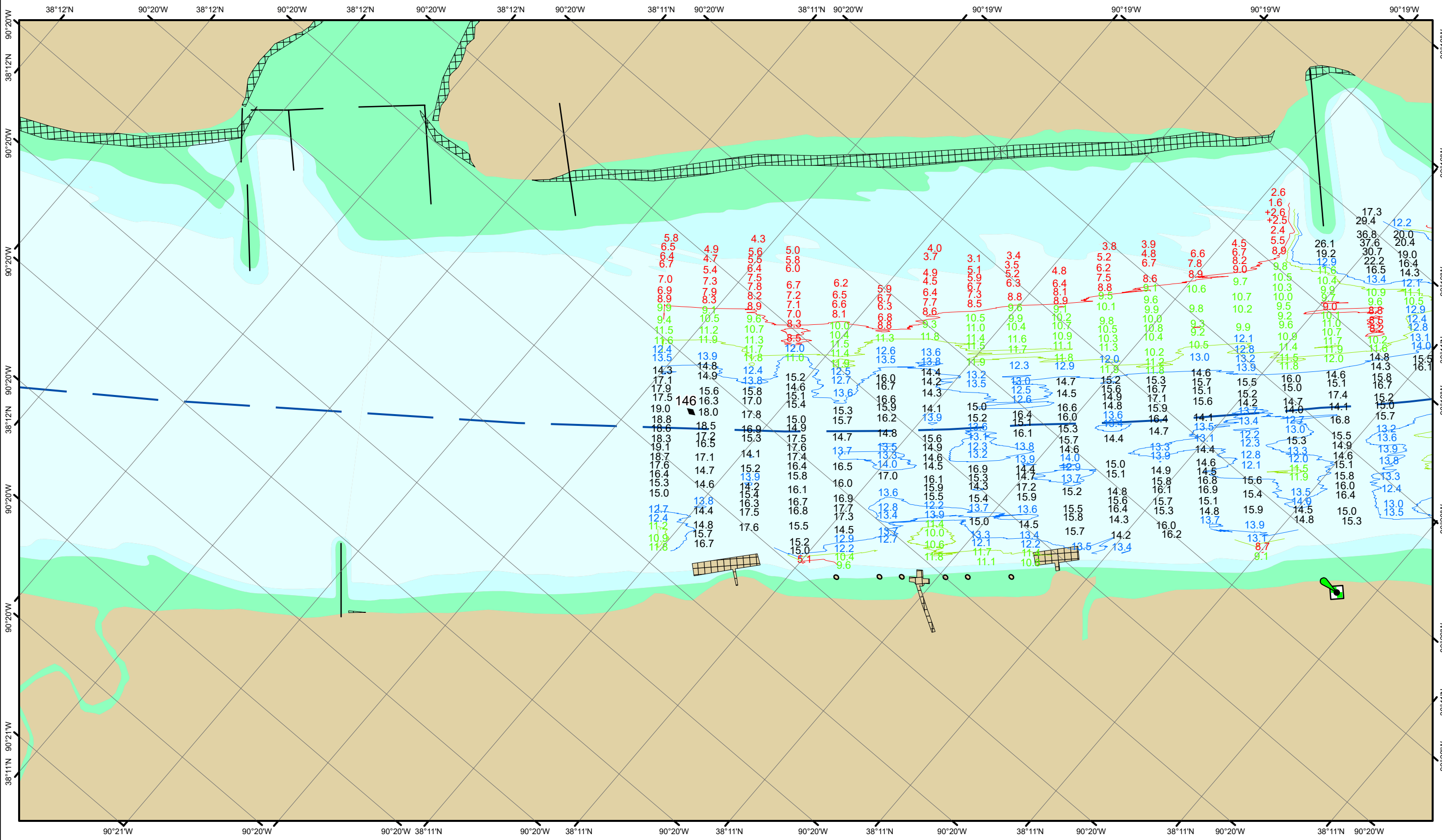
**Structures**

- Training Structure
- Revetment
- Tower/Power Poles
- Electrical Lines
- Fiber Optic Lines
- Pipelines

Scale: 0 250 500 750 1,000 Feet

**NOTES:**  
 Horizontal Coordinate System:  
 North American Datum of 1983 (NAD83), projected to the State Plane Coordinate System (SPCS), Missouri East Zone. Distance units in U.S. Survey Feet.  
 Vertical Datum:  
 Soundings are shown in feet and indicate depths below the 2014 Low Water Reference Plane.  
 The information depicted on this map represents the results of a survey conducted on the date indicated and can only be considered to represent the general condition existing at that time.  
 The location of navigation aids are based on and provided by the U.S. Coast Guard.

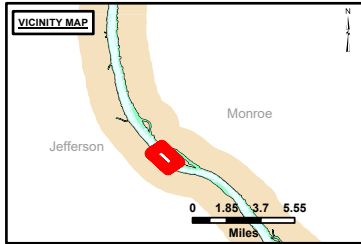
**Reach Number**  
 7 of 19



**DISCLAIMER:** The United States Government Lenders...  
 The data represents the results of data collection...  
 The information depicted on this map represents the results of a survey conducted on the date indicated and can only be considered to represent the general condition existing at that time.

Surveyed By:	Printed By:	Checked By:

**Survey Information**  
 PROTOTYPE\_REACH\_UPPER\_MISSISSIPPI  
 UM\_SL\_PRC\_20241209\_AD\_1  
 09 December 2024



**LAYERS**

- River Mile
- Sailing Line
- 9' below LWRP2014 Surface
- 12' below LWRP2014 Surface
- 14' below LWRP2014 Surface

Depths shown are below LWRP2014 Surface

**Aids to Navigation**

- Green
- Red
- Junction
- Green Buoy
- Red Buoy

**Structures**

- Training Structure
- Revetment
- Tower/Power Poles
- Electrical Lines
- Fiber Optic Lines
- Pipelines

Scale: 0 250 500 750 1,000 Feet

**NOTES:**  
 Horizontal Coordinate System:  
 North American Datum of 1983 (NAD83), projected to the State Plane Coordinate System (SPCS), Missouri East Zone. Distance units in U.S. Survey Feet.  
 Vertical Datum:  
 Soundings are shown in feet and indicate depths below the 2014 Low Water Reference Plane.  
 The information depicted on this map represents the results of a survey conducted on the date indicated and can only be considered to represent the general condition existing at that time.  
 The location of navigation aids are based on and provided by the U.S. Coast Guard.

**Reach Number**  
 8 of 19