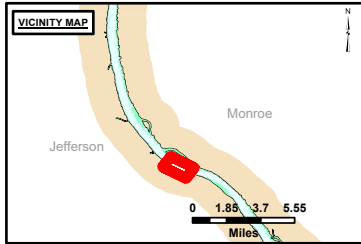


DISCLAIMER: The United States Government furnishes this information for general information only. The user assumes all liability for any use of the information other than that intended by the United States Government. The United States Government makes no warranty, express or implied, in this information and shall not be liable for any errors or omissions in this information. The user shall be responsible for verifying the accuracy of the information and for its use. The United States Government shall not be liable for any damages, including consequential damages, arising from the use of this information. These data belong to the Government. Therefore the user shall not disseminate these data to others without the written approval of the United States Government.

U.S. ARMY CORPS OF ENGINEERS		
Surveyed By:	Plotted By:	Checked By:

Survey Information
 PROTOTYPE_REACH_UPPER_MISSISSIPPI
 UM_SL_PRC_20241120_BD_1
 20 November 2024



LAYERS

- River Mile
- Sailing Line
- 9' below LWRP2014 Surface
- 12' below LWRP2014 Surface
- 14' below LWRP2014 Surface

Depths shown are below LWRP2014 Surface

Aids to Navigation

- Green
- Red
- Junction
- Green Buoy
- Red Buoy

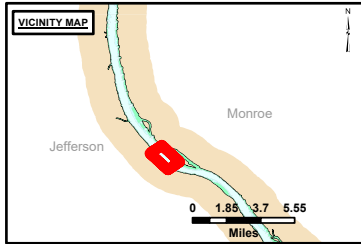
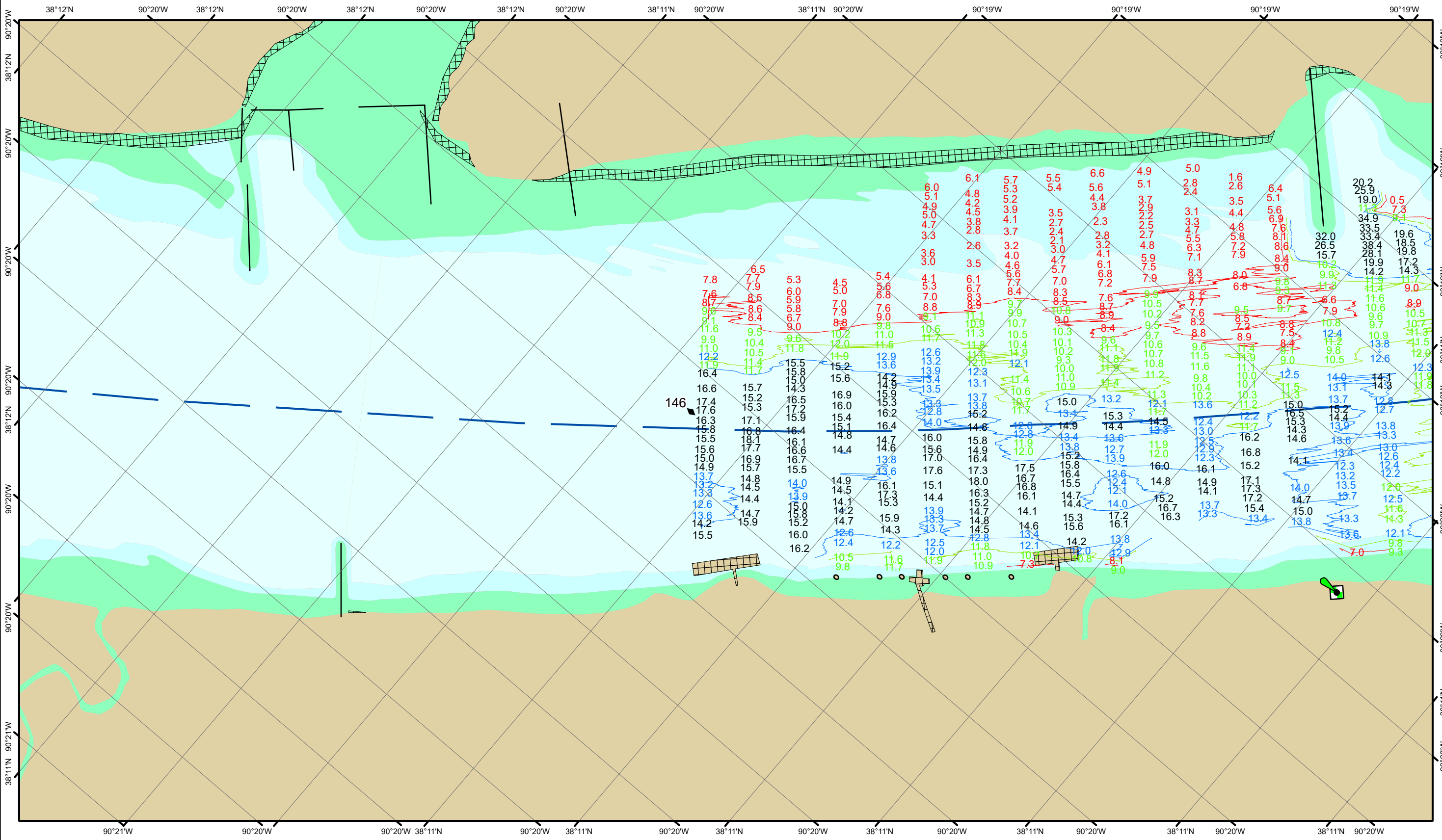
Infrastructure

- Training Structure
- Revetment
- Tower/Power Poles
- Electrical Lines
- Fiber Optic Lines
- Pipelines

Scale: 0 250 500 750 1,000 Feet

NOTES:
 Horizontal Coordinate System:
 North American Datum of 1983 (NAD83), projected to the State Plane Coordinate System (SPCS), Missouri East Zone. Distance units in U.S. Survey Feet.
 Vertical Datum:
 Soundings are shown in feet and indicate depths below the 2014 Low Water Reference Plane.
 The information depicted on this map represents the results of a survey conducted on the date indicated and can only be considered to represent the general condition existing at that time.
 The location of navigation aids are based on and provided by the U.S. Coast Guard.

Reach Number
 7 of 19



LAYERS

- River Mile
- Sailing Line
- 9' below LWRP2014 Surface
- 12' below LWRP2014 Surface
- 14' below LWRP2014 Surface

Depths shown are below LWRP2014 Surface

Aids to Navigation

- Green
- Red
- Junction
- Green Buoy
- Red Buoy

Training Structure

- Revetment
- Tower/Power Poles
- Electrical Lines
- Fiber Optic Lines
- Pipelines

Feet

0 250 500 750 1,000

NOTES:
 Horizontal Coordinate System:
 North American Datum of 1983 (NAD83), projected to the State Plane Coordinate System (SPCS), Missouri East Zone. Distance units in U.S. Survey Feet.

Vertical Datum:
 Soundings are shown in feet and indicate depths below the 2014 Low Water Reference Plane.

The information depicted on this map represents the results of a survey conducted on the date indicated and can only be considered to represent the general condition existing at that time.

The location of navigation aids are based on and provided by the U.S. Coast Guard.



DISCLAIMER: The United States Government Lenders and Guarantors make no warranties, express or implied, in connection with the use of the information and data furnished. The United States Government shall be held harmless for any loss or damage, including consequential or punitive damages, resulting from the use of the information and data furnished. These data belong to the Government. Therefore, the recipient may not transfer these data to others, without transferring this disclaimer.

Surveyed By:	Printed By:	Checked By:

Survey Information
 PROTOTYPE_REACH_UPPER_MISSISSIPPI
 UM_SL_PRC_20241120_BD_1
 20 November 2024

Reach Number
 8 of 19