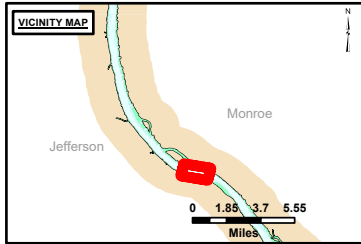


DISCLAIMER: The United States Government makes no warranty, express or implied, regarding the accuracy, reliability, or completeness of the information and data furnished. The United States shall be liable for damages only for negligence of its personnel or contractors in the performance of their duties. The recipient may not transfer these data to others without obtaining the Customer's approval.

DISTRIBUTION LIABILITY: The data represents the results of data collection/processing by a specific US Army Corps of Engineers District. It is not intended for use in any other project. At such, it is only valid for its intended use, current time and place. The user assumes all liability for any use of the data for other than its intended purpose.

U.S. ARMY CORPS OF ENGINEERS		
Surveyed By:	Plotted By:	Checked By:
Number:	Recommended:	Approved:

Survey Information
 PROTOTYPE_REACH_UPPER_MISSISSIPPI
 UM_SL_PRC_20241024_BD_1
 24 October 2024



LAYERS

- River Mile
- Sailing Line
- 9' below LWRP2014 Surface
- 12' below LWRP2014 Surface
- 14' below LWRP2014 Surface

Depths shown are below LWRP2014 Surface

Aids to Navigation

- Green
- Red
- Junction
- Green Buoy
- Red Buoy

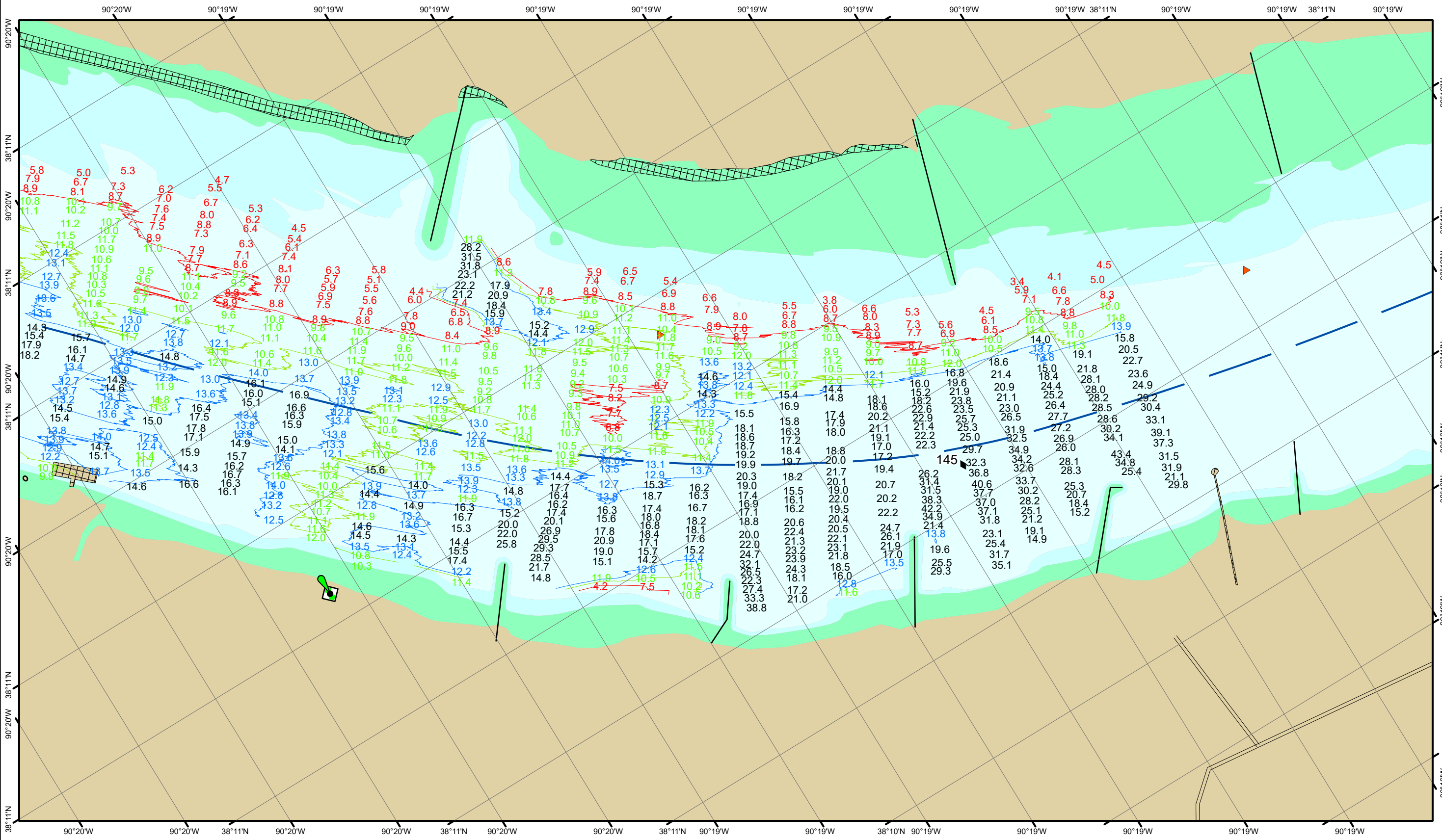
Structures and Lines

- Training Structure
- Revetment
- Tower/Power Poles
- Electrical Lines
- Fiber Optic Lines
- Pipelines

Scale: 0, 250, 500, 750, 1,000 Feet

NOTES:
 Horizontal Coordinate System: North American Datum of 1983 (NAD83), projected to the State Plane Coordinate System (SPCS), Missouri East Zone. Distance units in U.S. Survey Feet.
 Vertical Datum: Soundings are shown in feet and indicate depths below the 2014 Low Water Reference Plane.
 The information depicted on this map represents the results of a survey conducted on the date indicated and can only be considered to represent the general condition existing at that time.
 The location of navigation aids are based on and provided by the U.S. Coast Guard.

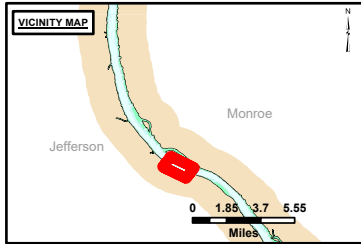
Reach Number
 6 of 19



DISCLAIMER: The United States Government furnishes this information as a service to the public. It is not intended to be used for any purpose other than that for which it was prepared. The United States Government makes no warranty, express or implied, as to the accuracy, reliability, or completeness of the information. The user shall be responsible for the use of the information. The United States Government shall not be held liable for any damages, including consequential damages, arising from the use of the information. These data belong to the Government. Therefore the recipient may not transfer these data to others without obtaining the permission of the Government.

Surveyed By:	Printed By:	Checked By:

Survey Information
 PROTOTYPE_REACH_UPPER_MISSISSIPPI
 UM_SL_PRC_20241024_BD_1
 24 October 2024



LAYERS

- River Mile
- Sailing Line
- 9' below LWRP2014 Surface
- 12' below LWRP2014 Surface
- 14' below LWRP2014 Surface

Depths shown are below LWRP2014 Surface

Aids to Navigation

- Green
- Red
- Junction
- Green Buoy
- Red Buoy

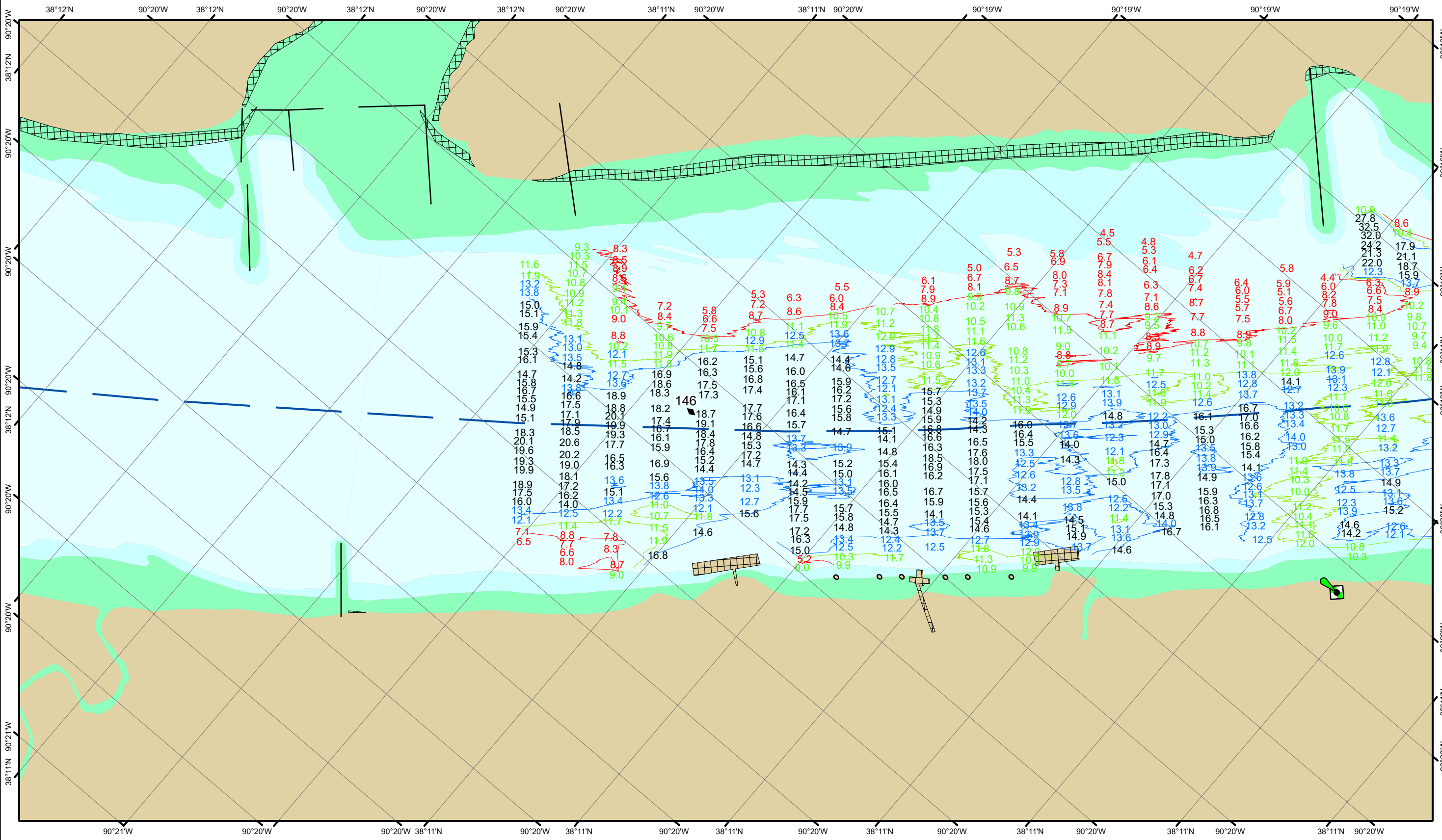
Structures and Lines

- Training Structure
- Revetment
- Tower/Power Poles
- Electrical Lines
- Fiber Optic Lines
- Pipelines

Scale: 0, 250, 500, 750, 1,000 Feet

NOTES:
 Horizontal Coordinate System:
 North American Datum of 1983 (NAD83), projected to the State Plane Coordinate System (SPCS), Missouri East Zone. Distance units in U.S. Survey Feet.
 Vertical Datum:
 Soundings are shown in feet and indicate depths below the 2014 Low Water Reference Plane.
 The information depicted on this map represents the results of a survey conducted on the date indicated and can only be considered to represent the general condition existing at that time.
 The location of navigation aids are based on and provided by the U.S. Coast Guard.

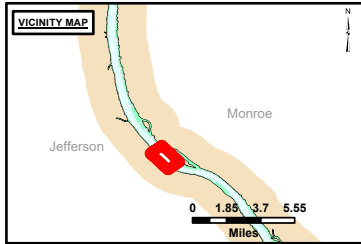
Reach Number
 7 of 19



DISCLAIMER: The United States Government Lenders and/or guarantors of the U.S. Army Corps of Engineers. The data presented on this map represents the results of a survey conducted on the date indicated and can only be considered to represent the general condition existing at that time. The information depicted on this map represents the results of a survey conducted on the date indicated and can only be considered to represent the general condition existing at that time. The location of navigation aids are based on and provided by the U.S. Coast Guard.

Surveyed By:	Printed By:	Checked By:

Survey Information
 PROTOTYPE_REACH_UPPER_MISSISSIPPI
 UM_SL_PRC_20241024_BD_1
 24 October 2024



LAYERS

- River Mile
- Sailing Line
- 9' below LWRP2014 Surface
- 12' below LWRP2014 Surface
- 14' below LWRP2014 Surface

Depths shown are below LWRP2014 Surface

Aids to Navigation

- Green
- Red
- Junction
- Green Buoy
- Red Buoy

Training Structure

- Revetment
- Tower/Power Poles
- Electrical Lines
- Fiber Optic Lines
- Pipelines

Feet
0 250 500 750 1,000

NOTES:
 Horizontal Coordinate System:
 North American Datum of 1983 (NAD83), projected to the State Plane Coordinate System (SPCS), Missouri East Zone. Distance units in U.S. Survey Feet.
 Vertical Datum:
 Soundings are shown in feet and indicate depths below the 2014 Low Water Reference Plane.
 The information depicted on this map represents the results of a survey conducted on the date indicated and can only be considered to represent the general condition existing at that time.
 The location of navigation aids are based on and provided by the U.S. Coast Guard.

Reach Number
 8 of 19