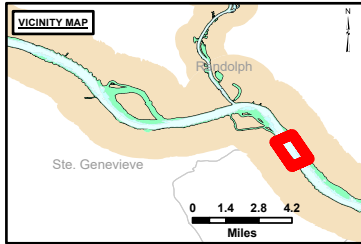


DISCLAIMER: The United States Government makes no warranty, express or implied, regarding the accuracy, reliability, or completeness of the information and data furnished. The United States Government shall be held harmless for any loss or damage, including consequential damages, resulting from the use of the information and data furnished. The recipient may not transfer these data to others without obtaining the permission of the District Engineer.

Surveyed By:	Checked By:
Plotted By:	

Survey Information
 KASKASKIA_BEND_UPPER_MISSISSIPPI
 UM_SL_KBC_20241023_BD_1
 23 October 2024



LAYERS

- River Mile
- Sailing Line
- 9' below LWRP2014 Surface
- 12' below LWRP2014 Surface
- 14' below LWRP2014 Surface

Depths shown are below LWRP2014 Surface

Aids to Navigation

- Green
- Red
- Junction
- Green Buoy
- Red Buoy

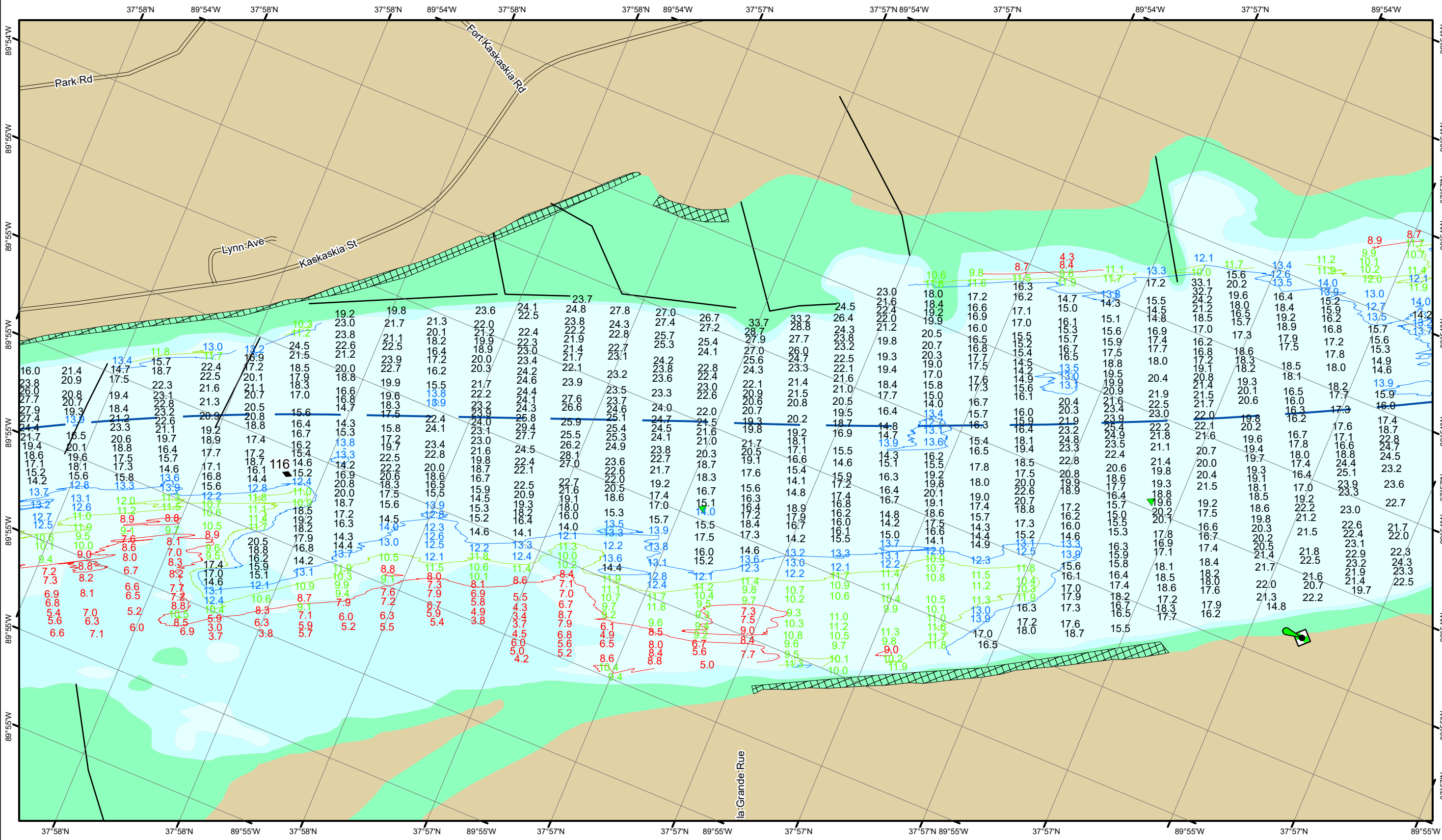
Structures and Lines

- Training Structure
- Revetment
- Tower/Power Poles
- Electrical Lines
- Fiber Optic Lines
- Pipelines

Scale: 0, 250, 500, 750, 1,000 Feet

NOTES:
 Horizontal Coordinate System: North American Datum of 1983 (NAD83), projected to the State Plane Coordinate System (SPCS), Missouri East Zone. Distance units in U.S. Survey Feet.
 Vertical Datum: Soundings are shown in feet and indicate depths below the 2014 Low Water Reference Plane.
 The information depicted on this map represents the results of a survey conducted on the date indicated and can only be considered to represent the general condition existing at that time.
 The location of navigation aids are based on and provided by the U.S. Coast Guard.

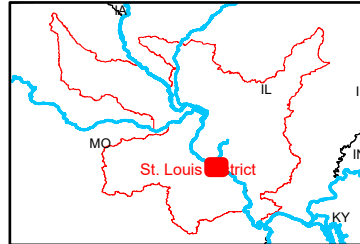
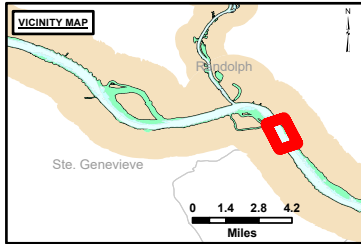
Reach Number
 4 of 18



DISCLAIMER: The United States Government Lenders...
 Distribution Liability: The data represents the results of data collection...
 Accuracy: The data represents the results of data collection...
 Use: This map is for informational purposes only and should not be used for navigation or other critical applications.

Surveyed By:	Checked By:
Plotted By:	Approved:
Documented:	
Approved:	

Survey Information
 KASKASKIA_BEND_UPPER_MISSISSIPPI
 UM_SL_KBC_20241023_BD_1
 23 October 2024



LAYERS

- River Mile
- Sailing Line
- 9' below LWRP2014 Surface
- 12' below LWRP2014 Surface
- 14' below LWRP2014 Surface

Depths shown are below LWRP2014 Surface

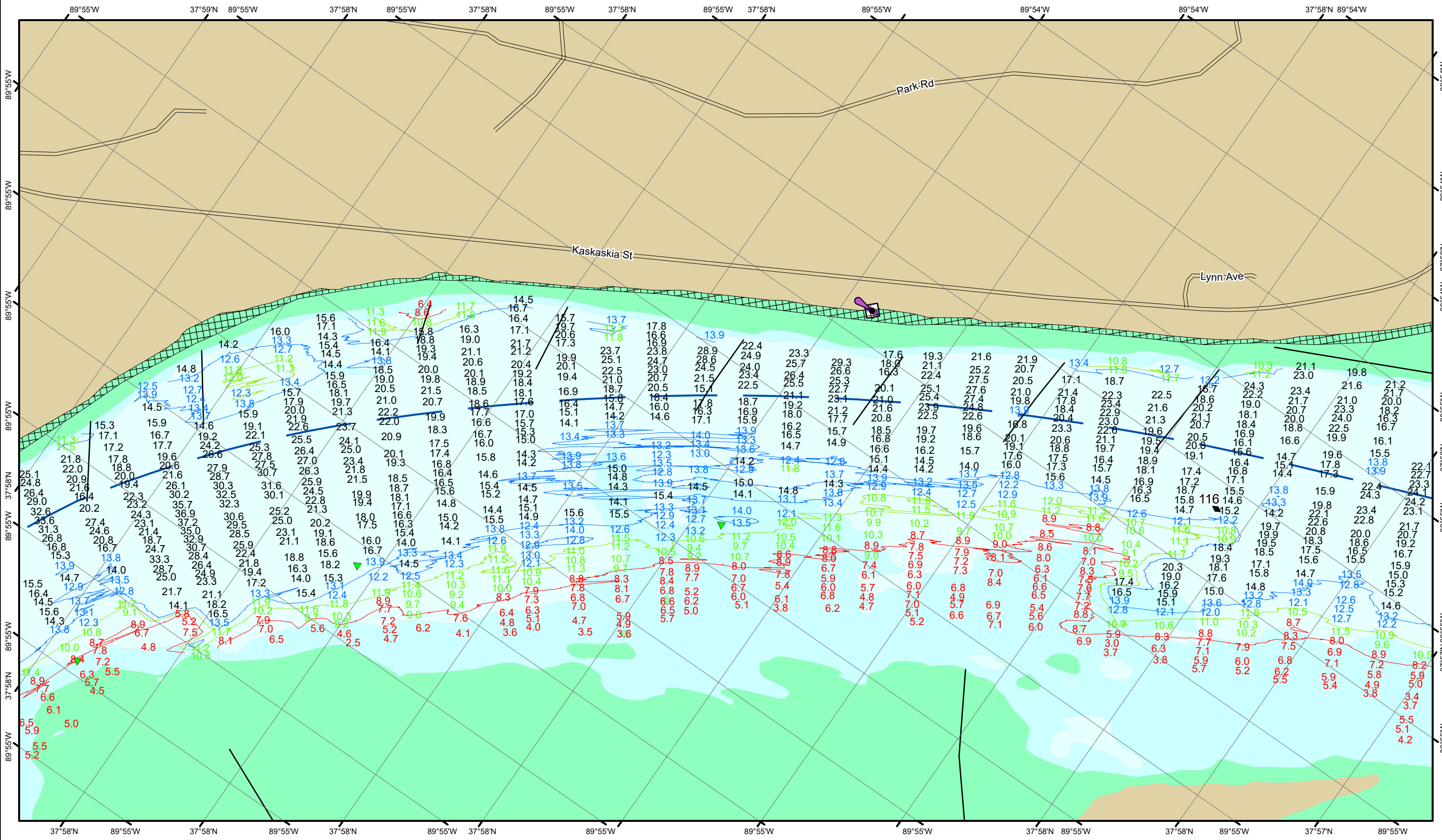
Aids to Navigation

- Green Buoy
- Red Buoy
- Junction
- Training Structure
- Revetment
- Tower/Power Poles
- Electrical Lines
- Fiber Optic Lines
- Pipelines

Scale: 0, 250, 500, 750, 1,000 Feet

NOTES:
 Horizontal Coordinate System: North American Datum of 1983 (NAD83), projected to the State Plane Coordinate System (SPCS), Missouri East Zone. Distance units in U.S. Survey Feet.
 Vertical Datum: Soundings are shown in feet and indicate depths below the 2014 Low Water Reference Plane.
 The information depicted on this map represents the results of a survey conducted on the date indicated and can only be considered to represent the general condition existing at that time.
 The location of navigation aids are based on and provided by the U.S. Coast Guard.

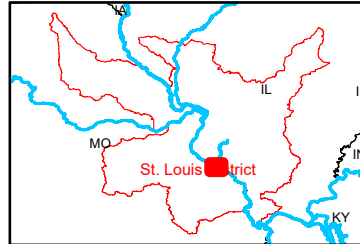
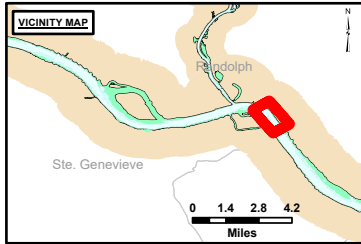
Reach Number
 5 of 18



DISCLAIMER: The United States Government Lenders and/or Contractors/Service Providers are authorized to reproduce and distribute reprints for government purposes not withstanding any copyright notation that may appear hereon. This document is intended to provide information and does not constitute an offer of insurance or any other financial product. The information is provided for informational purposes only and is not intended to be used for any other purpose. The information is provided as is and the user assumes all responsibility for its use. The information is not intended to be used for any other purpose. The information is provided as is and the user assumes all responsibility for its use. The information is not intended to be used for any other purpose.

Surveyed By:	Checked By:
Plotted By:	Approved:
Documented:	
Approved:	

Survey Information
 KASKASKIA_BEND_UPPER_MISSISSIPPI
 UM_SL_KBC_20241023_BD_1
 23 October 2024



LAYERS

- River Mile
- Sailing Line
- 9' below LWRP2014 Surface
- 12' below LWRP2014 Surface
- 14' below LWRP2014 Surface

Depths shown are below LWRP2014 Surface

Aids to Navigation

- Green
- Red
- Junction
- Green Buoy
- Red Buoy

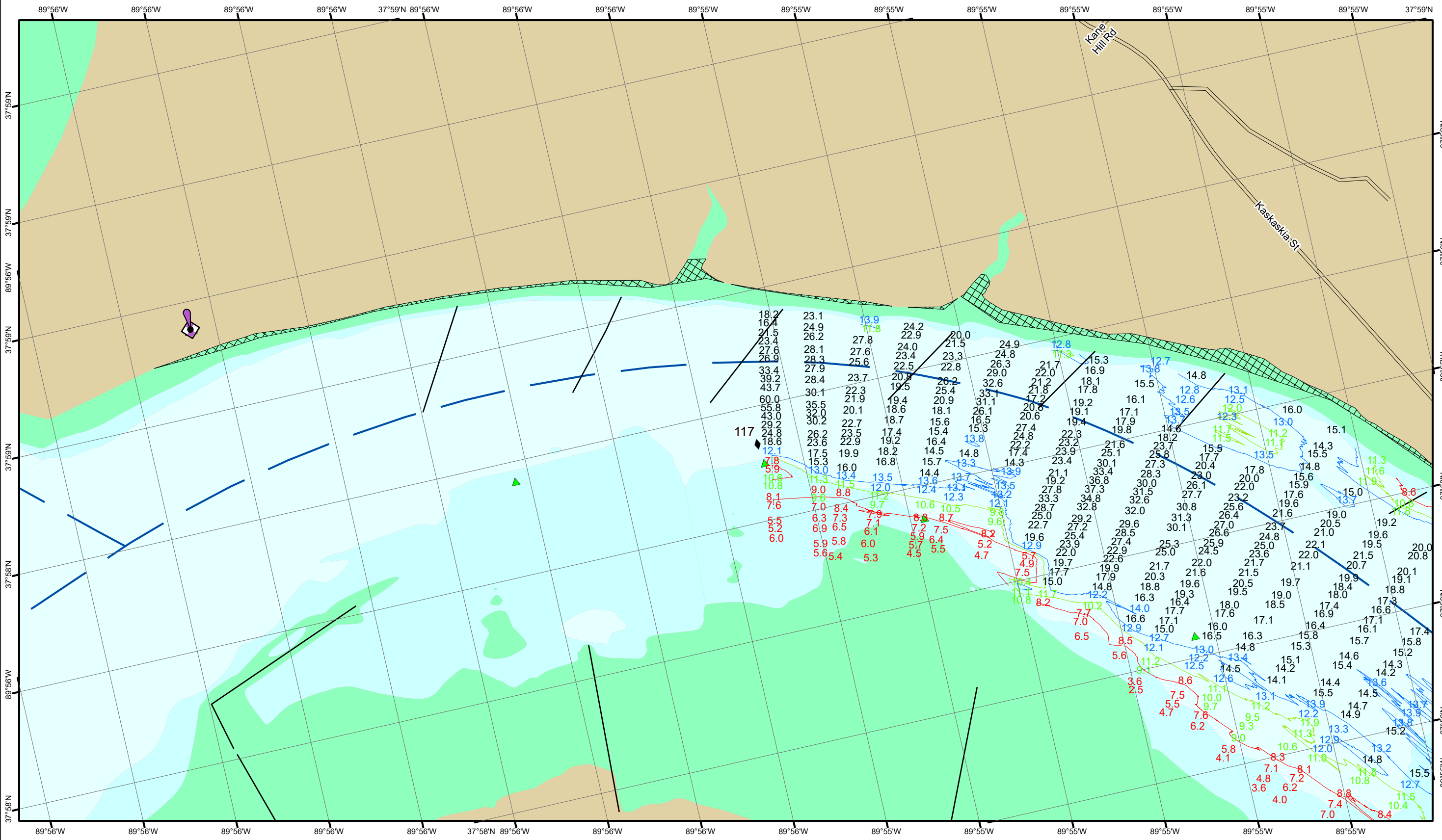
Infrastructure

- Training Structure
- Revetment
- Tower/Power Poles
- Electrical Lines
- Fiber Optic Lines
- Pipelines

Scale: 0, 250, 500, 750, 1,000 Feet

NOTES:
 Horizontal Coordinate System:
 North American Datum of 1983 (NAD83), projected to the State Plane Coordinate System (SPCS), Missouri East Zone. Distance units in U.S. Survey Feet.
 Vertical Datum:
 Soundings are shown in feet and indicate depths below the 2014 Low Water Reference Plane.
 The information depicted on this map represents the results of a survey conducted on the date indicated and can only be considered to represent the general condition existing at that time.
 The location of navigation aids are based on and provided by the U.S. Coast Guard.

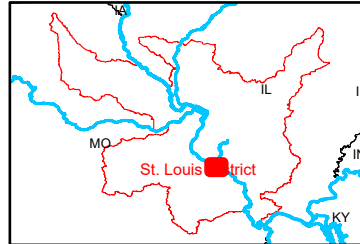
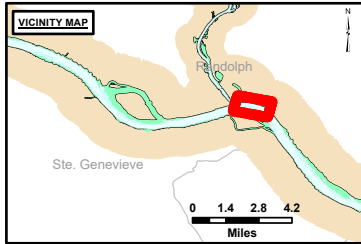
Reach Number
 6 of 18



DISCLAIMER: The United States Government Lend Lease Act, 48 USC 1431, authorizes the distribution of this information and its use for navigation purposes. The United States Government makes no warranty, express or implied, as to the accuracy, reliability, or completeness of the information and its use for navigation purposes. The user assumes all liability for any use of the information other than that authorized by the Lend Lease Act. These data belong to the Government. The recipient may not transfer these data to others without the approval of the Government.

Surveyed By:	Plotted By:	Checked By:

Survey Information
 KASKASKIA_BEND_UPPER_MISSISSIPPI
 UM_SL_KBC_20241023_BD_1
 23 October 2024



LAYERS

- River Mile
- Sailing Line
- 9' below LWRP2014 Surface
- 12' below LWRP2014 Surface
- 14' below LWRP2014 Surface

Depths shown are below LWRP2014 Surface

Aids to Navigation

- Green
- Red
- Junction
- Green Buoy
- Red Buoy

Structures

- Training Structure
- Revetment
- Tower/Power Poles
- Electrical Lines
- Fiber Optic Lines
- Pipelines

Scale: 0, 250, 500, 750, 1,000 Feet

NOTES:
 Horizontal Coordinate System:
 North American Datum of 1983 (NAD83), projected to the State Plane Coordinate System (SPCS), Missouri East Zone. Distance units in U.S. Survey Feet.
 Vertical Datum:
 Soundings are shown in feet and indicate depths below the 2014 Low Water Reference Plane.
 The information depicted on this map represents the results of a survey conducted on the date indicated and can only be considered to represent the general condition existing at that time.
 The location of navigation aids are based on and provided by the U.S. Coast Guard.

Reach Number
 7 of 18