

DISCLAIMER: The United States Government Lenders...
 Distribution Liability: The data represents the results of data collection...
 Accuracy: The data represents the results of data collection...
 Use: This map is for informational purposes only and should not be used for navigation or other critical purposes.

Surveyed By:	Printed By:	Checked By:

Survey Information
 IVORY_LANDING_UPPER_MISSISSIPPI
 UM_SL_ILC_20241216_BD_2
 16 December 2024



LAYERS

- River Mile
- Sailing Line
- 9' below LWRP2014 Surface
- 12' below LWRP2014 Surface
- 14' below LWRP2014 Surface

Depths shown are below LWRP2014 Surface

Aids to Navigation

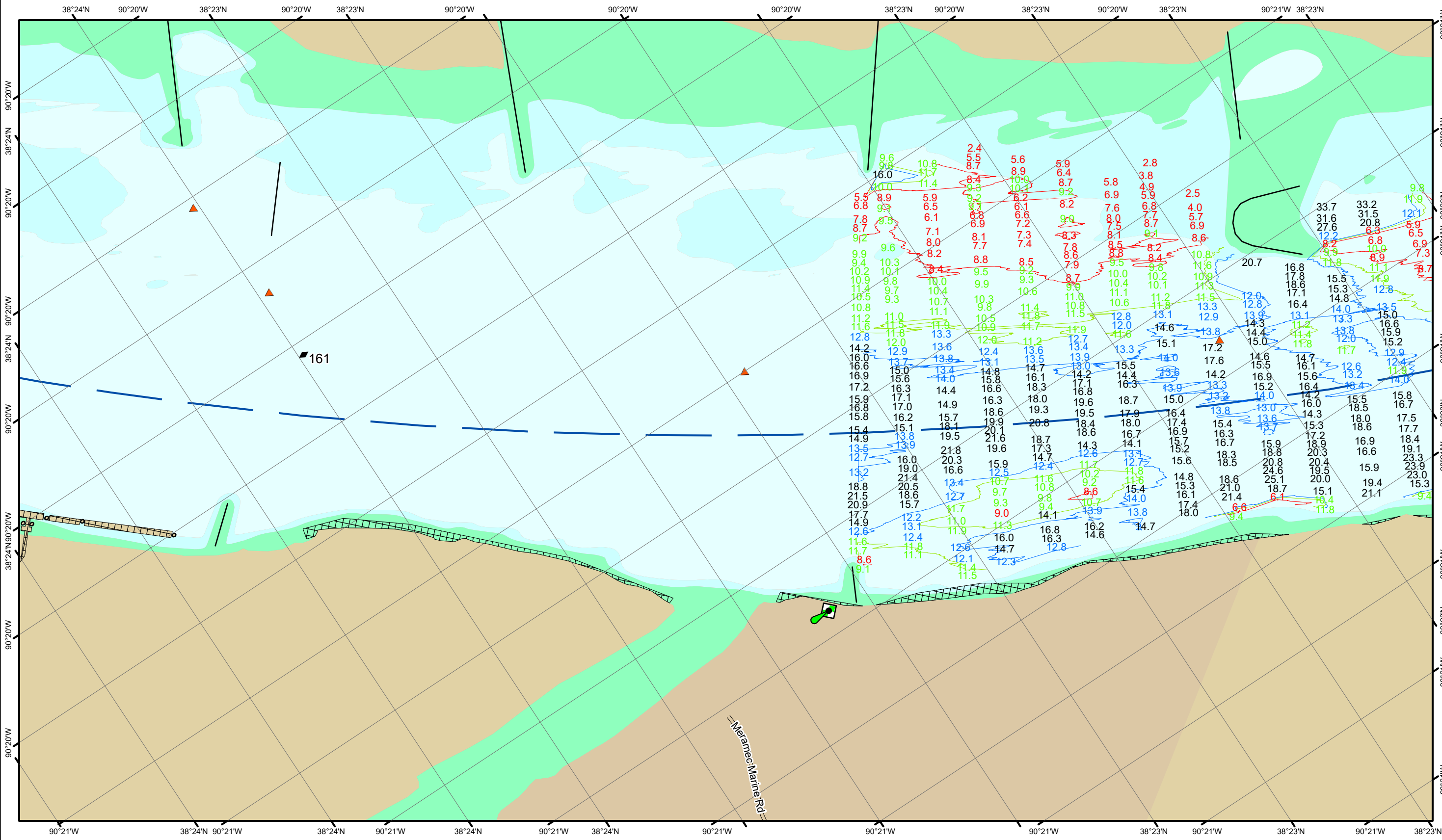
- Green
- Red
- Junction
- Green Buoy
- Red Buoy

Structures and Lines

- Training Structure
- Revetment
- Tower/Power Poles
- Electrical Lines
- Fiber Optic Lines
- Pipelines

Scale: 0, 250, 500, 750, 1,000 Feet

NOTES:
 Horizontal Coordinate System: North American Datum of 1983 (NAD83), projected to the State Plane Coordinate System (SPCS), Missouri East Zone. Distance units in U.S. Survey Feet.
 Vertical Datum: Soundings are shown in feet and indicate depths below the 2014 Low Water Reference Plane.
 The information depicted on this map represents the results of a survey conducted on the date indicated and can only be considered to represent the general condition existing at that time.
 The location of navigation aids are based on and provided by the U.S. Coast Guard.



DISCLAIMER: The United States Government Lenders...
 Distribution Liability: The data represents the results of data...
 The recipient may not transfer these data to others without transferring this Customer.

Surveyed By:	Plotted By:	Checked By:

Survey Information
 IVORY_LANDING_UPPER_MISSISSIPPI
 UM_SL_ILC_20241216_BD_2
 16 December 2024



LAYERS

- River Mile
- Sailing Line
- 9' below LWRP2014 Surface
- 12' below LWRP2014 Surface
- 14' below LWRP2014 Surface

Depths shown are below LWRP2014 Surface

Aids to Navigation

- Green
- Red
- Junction
- Green Buoy
- Red Buoy

Training Structure

- Revetment
- Tower/Power Poles
- Electrical Lines
- Fiber Optic Lines
- Pipelines

Compass rose and scale bar (0 to 1,000 feet).

NOTES:
 Horizontal Coordinate System:
 North American Datum of 1983 (NAD83), projected to the State Plane Coordinate System (SPCS), Missouri East Zone. Distance units in U.S. Survey Feet.
 Vertical Datum:
 Soundings are shown in feet and indicate depths below the 2014 Low Water Reference Plane.
 The information depicted on this map represents the results of a survey conducted on the date indicated and can only be considered to represent the general condition existing at that time.
 The location of navigation aids are based on and provided by the U.S. Coast Guard.

Reach Number
 9 of 45