

DISCLAIMER: The United States Government furnishes this information as a service to the public and does not warrant its accuracy, completeness, or timeliness. The user shall be responsible for the proper use of the information and for the consequences of any errors or omissions. The user shall be held harmless for any damages, including consequential damages, arising from the use of the information. This information is provided for informational purposes only and is not to be used for navigation or other critical purposes. The user shall be held harmless for any damages, including consequential damages, arising from the use of the information. This information is provided for informational purposes only and is not to be used for navigation or other critical purposes. The user shall be held harmless for any damages, including consequential damages, arising from the use of the information.

U.S. ARMY CORPS OF ENGINEERS		
Surveyed By:	Plotted By:	Checked By:

Survey Information
 IVORY_LANDING_UPPER_MISSISSIPPI
 UM_SL_ILC_20240920_BD_1
 20 September 2024



LAYERS

- River Mile
- Sailing Line
- 9' below LWRP2014 Surface
- 12' below LWRP2014 Surface
- 14' below LWRP2014 Surface

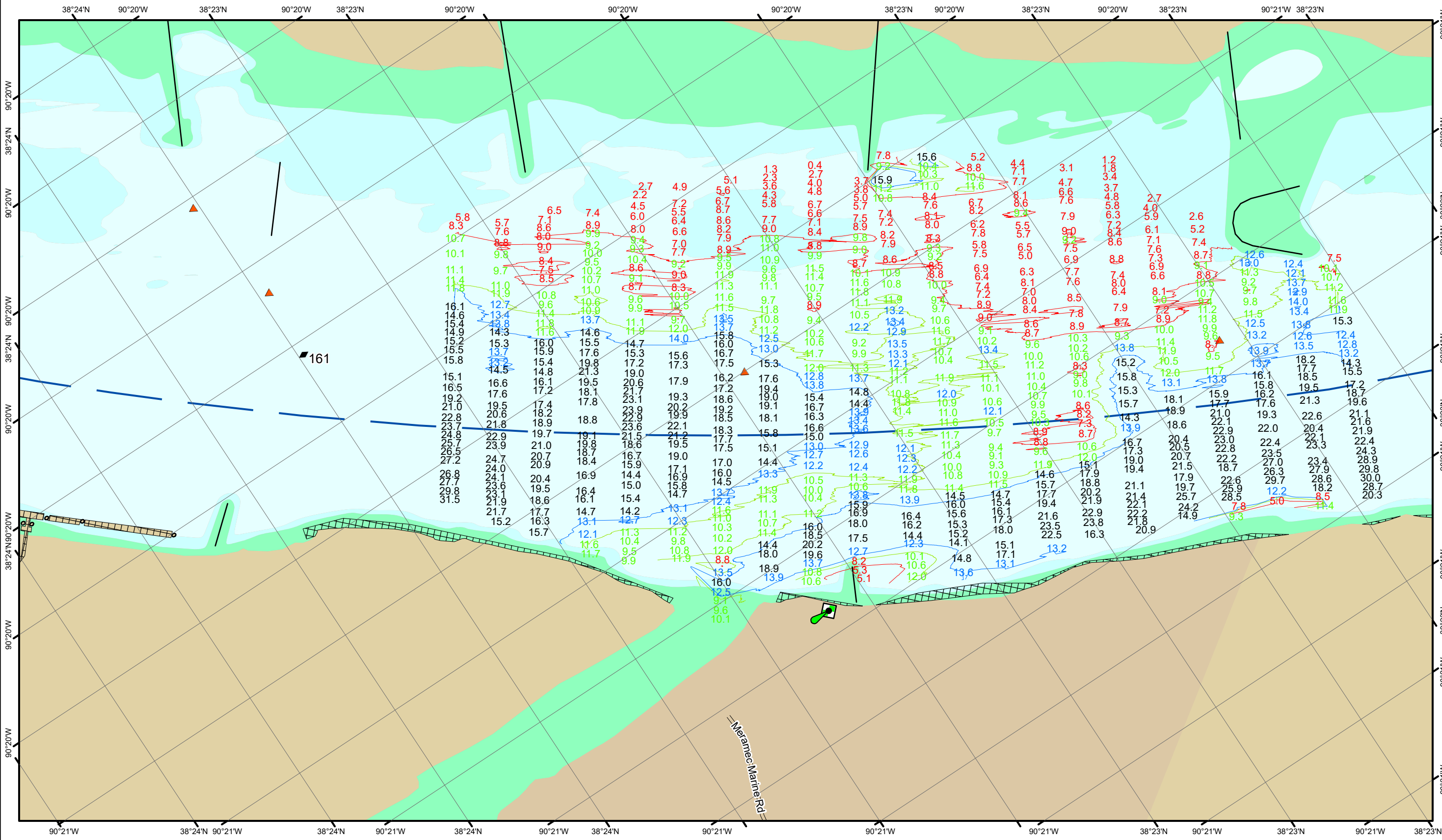
Depths shown are below LWRP2014 Surface

Aids to Navigation

- Green
- Red
- Junction
- Green Buoy
- Red Buoy
- Training Structure
- Revetment
- Tower/Power Poles
- Electrical Lines
- Fiber Optic Lines
- Pipelines

NOTES:
 Horizontal Coordinate System:
 North American Datum of 1983 (NAD83), projected to the State Plane Coordinate System (SPCS), Missouri East Zone. Distance units in U.S. Survey Feet.
 Vertical Datum:
 Soundings are shown in feet and indicate depths below the 2014 Low Water Reference Plane.
 The information depicted on this map represents the results of a survey conducted on the date indicated and can only be considered to represent the general condition existing at that time.
 The location of navigation aids are based on and provided by the U.S. Coast Guard.

Reach Number
 8 of 45



DISCLAIMER: The United States Government Lenders and/or Borrowers are not responsible for the accuracy or completeness of the information and data furnished. The United States Government makes no warranty, express or implied, as to the accuracy, reliability, or availability of the information and data furnished. The recipient shall be responsible for verifying the accuracy and completeness of the information and data furnished. These data belong to the Government. Therefore, the recipient may not transfer these data to others without the approval of the Government.

Surveyed By:	Plotted By:	Checked By:

Survey Information
 IVORY_LANDING_UPPER_MISSISSIPPI
 UM_SL_ILC_20240920_BD_1
 20 September 2024



LAYERS

- River Mile
- Sailing Line
- 9' below LWRP2014 Surface
- 12' below LWRP2014 Surface
- 14' below LWRP2014 Surface

Depths shown are below LWRP2014 Surface

Aids to Navigation

- Green
- Red
- Junction
- Green Buoy
- Red Buoy

Structures and Lines

- Training Structure
- Revetment
- Tower/Power Poles
- Electrical Lines
- Fiber Optic Lines
- Pipelines

Vertical Datum:
 Soundings are shown in feet and indicate depths below the 2014 Low Water Reference Plane.

The information depicted on this map represents the results of a survey conducted on the date indicated and can only be considered to represent the general condition existing at that time.

The location of navigation aids are based on and provided by the U.S. Coast Guard.

Reach Number
 9 of 45