

**DISCLAIMER:** The United States Government furnishes this information as a service to the public. It is not intended to be used for any purpose other than that for which it was prepared. The United States Government makes no warranty, express or implied, in this information and its use. The user assumes all liability for any damage or loss resulting from the use of this information. These data belong to the Government. Therefore, the user may not transfer these data to others without the written consent of the Government.

U.S. ARMY CORPS OF ENGINEERS		
Surveyed By:	Plotted By:	Checked By:

**Survey Information**  
 IVORY\_LANDING\_UPPER\_MISSISSIPPI  
 UM\_SL\_ILC\_20240903\_BD\_1  
 03 September 2024



**LAYERS**

- River Mile
- Sailing Line
- 9' below LWRP2014 Surface
- 12' below LWRP2014 Surface
- 14' below LWRP2014 Surface

Depths shown are below LWRP2014 Surface

**Aids to Navigation**

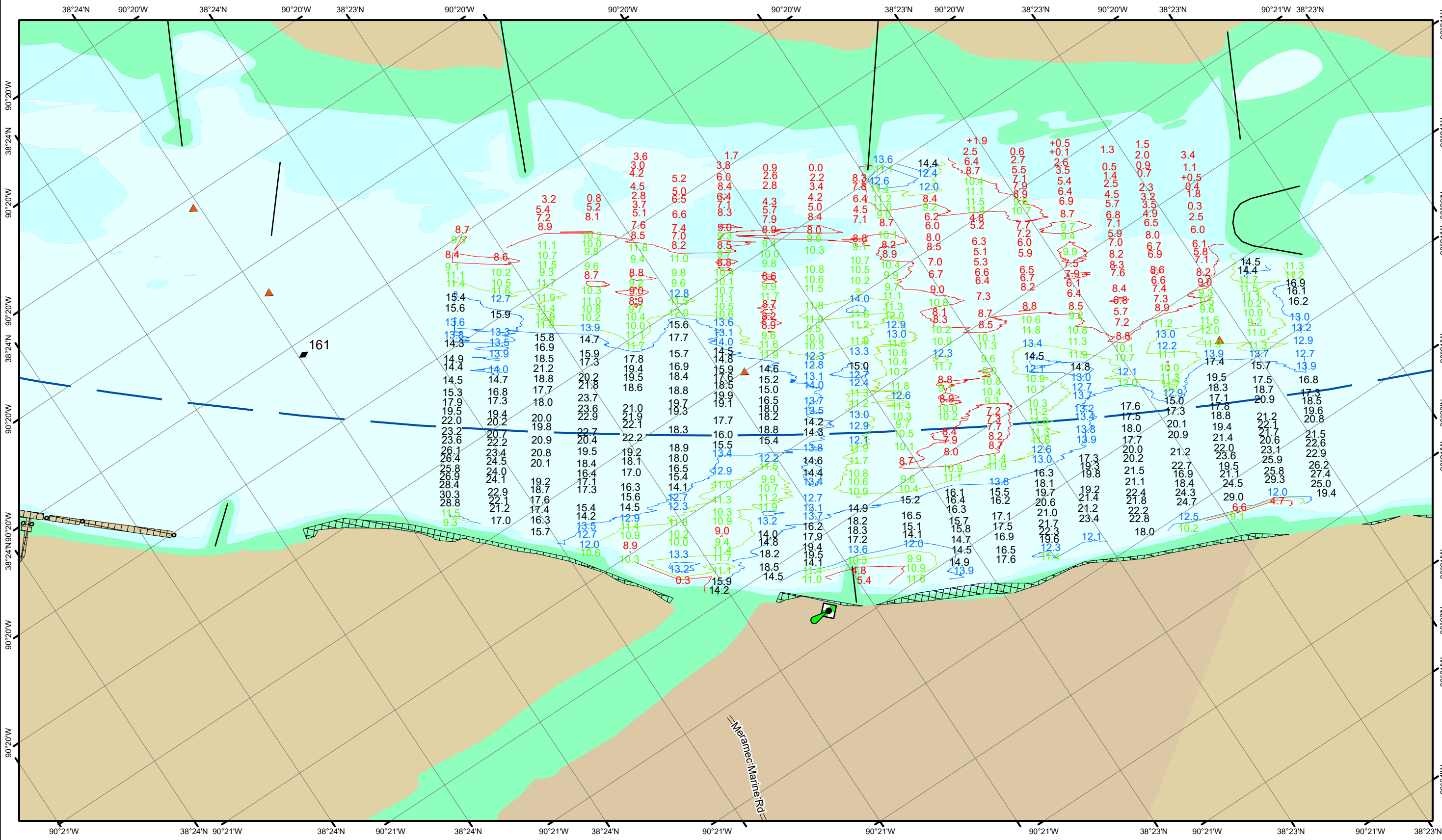
- Green
- Red
- Junction
- Green Buoy
- Red Buoy

**Structures**

- Training Structure
- Revetment
- Tower/Power Poles
- Electrical Lines
- Fiber Optic Lines
- Pipelines

Scale: 0, 250, 500, 750, 1,000 Feet

**NOTES:**  
 Horizontal Coordinate System:  
 North American Datum of 1983 (NAD83), projected to the State Plane Coordinate System (SPCS), Missouri East Zone. Distance units in U.S. Survey Feet.  
 Vertical Datum:  
 Soundings are shown in feet and indicate depths below the 2014 Low Water Reference Plane.  
 The information depicted on this map represents the results of a survey conducted on the date indicated and can only be considered to represent the general condition existing at that time.  
 The location of navigation aids are based on and provided by the U.S. Coast Guard.



**DISCLAIMER:** The United States Government Lenders and Guarantors make no warranties, express or implied, in connection with the use of the data for any purpose other than that for which it was provided. The recipient may not transfer or disseminate the data to others without the prior written consent of the U.S. Army Corps of Engineers. The data represents the results of data collection for a specific US Army Corps of Engineers project. As such, it may vary from published data and is not intended for use for any other purpose.

Surveyed By:	Plotted By:	Checked By:

**Survey Information**  
 IVORY\_LANDING\_UPPER\_MISSISSIPPI  
 UM\_SL\_ILC\_20240903\_BD\_1  
 03 September 2024



**LAYERS**

- River Mile
- Sailing Line
- 9' below LWRP2014 Surface
- 12' below LWRP2014 Surface
- 14' below LWRP2014 Surface

Depths shown are below LWRP2014 Surface

**Aids to Navigation**

- Green
- Red
- Junction
- Green Buoy
- Red Buoy

**Structures and Lines**

- Training Structure
- Revetment
- Tower/Power Poles
- Electrical Lines
- Fiber Optic Lines
- Pipelines

Scale: 0, 250, 500, 750, 1,000 Feet

**NOTES:**  
 Horizontal Coordinate System:  
 North American Datum of 1983 (NAD83), projected to the State Plane Coordinate System (SPCS), Missouri East Zone. Distance units in U.S. Survey Feet.  
 Vertical Datum:  
 Soundings are shown in feet and indicate depths below the 2014 Low Water Reference Plane.  
 The information depicted on this map represents the results of a survey conducted on the date indicated and can only be considered to represent the general condition existing at that time.  
 The location of navigation aids are based on and provided by the U.S. Coast Guard.

**Reach Number 9 of 45**