

LAYERS

- River Mile
- Sailing Line
- 9' below LWRP2014 Surface
- 12' below LWRP2014 Surface
- 14' below LWRP2014 Surface

Depths shown are below LWRP2014 Surface

Aids to Navigation

- Green
- Red
- Junction
- Green Buoy
- Red Buoy

Training Structure

- Revetment
- Tower/Power Poles
- Electrical Lines
- Fiber Optic Lines
- Pipelines

Scale: 0 250 500 750 1,000 Feet

NOTES:
 Horizontal Coordinate System:
 North American Datum of 1983 (NAD83), projected to the State Plane Coordinate System (SPCS), Missouri East Zone. Distance units in U.S. Survey Feet.
 Vertical Datum:
 Soundings are shown in feet and indicate depths below the 2014 Low Water Reference Plane.
 The information depicted on this map represents the results of a survey conducted on the date indicated and can only be considered to represent the general condition existing at that time.
 The location of navigation aids are based on and provided by the U.S. Coast Guard.



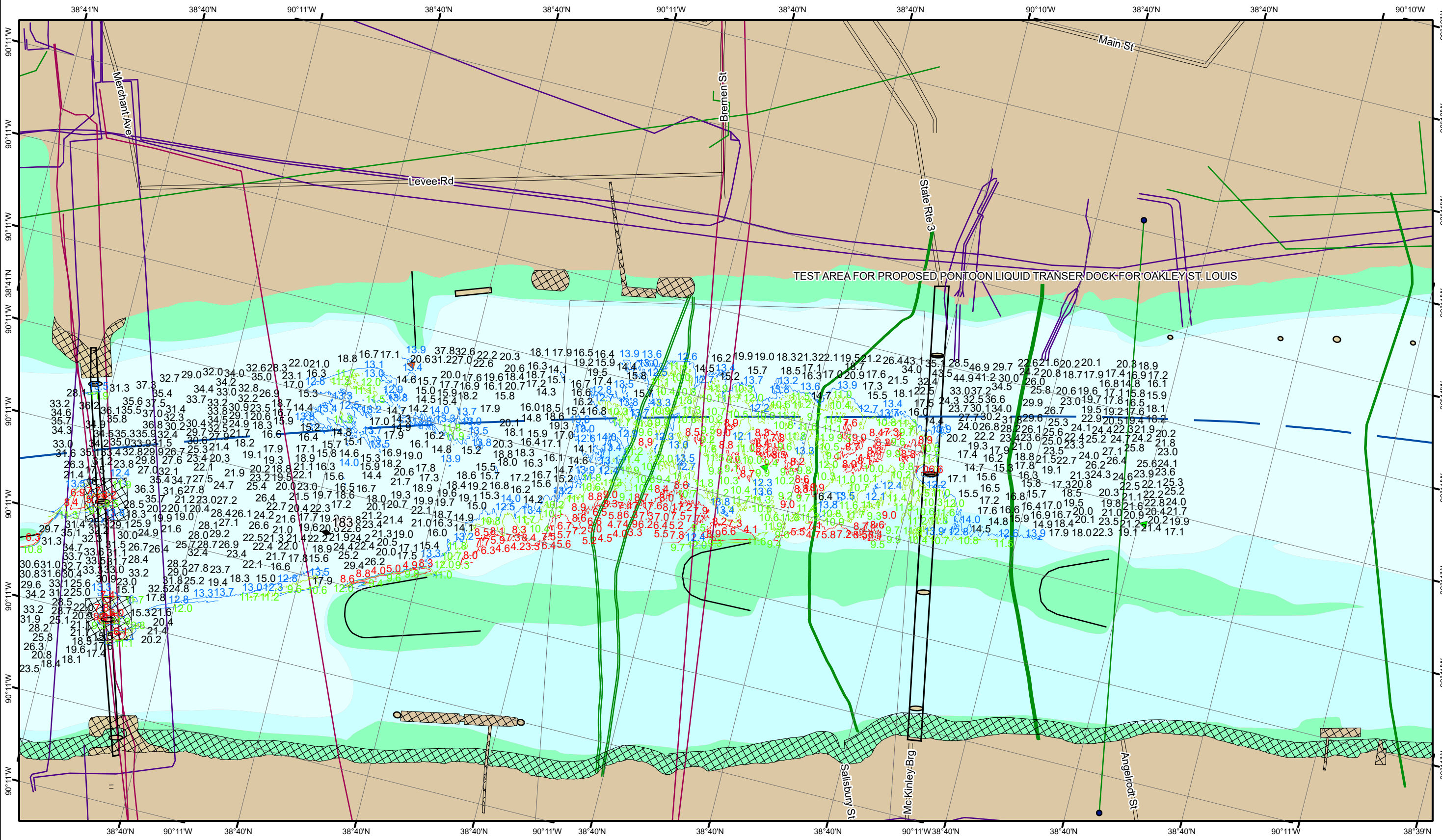
DISCLAIMER: The United States Government furnishes this information as a service to the public. It is not intended to be used for any purpose other than that for which it was prepared. The United States Government makes no warranty, express or implied, as to the accuracy, reliability, or completeness of any information provided. The user assumes all liability for any use of the information other than that for which it was prepared. These data belong to the Government. Therefore, the recipient may not transfer these data to others without obtaining the permission of the Government.

U.S. ARMY CORPS OF ENGINEERS

Surveyed By:	Plotted By:	Checked By:
Number:	Document:	Approved:

Survey Information
 IVORY_LANDING_UPPER_MISSISSIPPI
 UM_SL_ILC_20240328_BD_1
 28 March 2024

Reach Number
 36 of 45



DISCLAIMER: The United States Government neither warrants nor makes any representation, express or implied, regarding the accuracy, reliability, or completeness of the information and data furnished hereon. The United States Government shall be held harmless for any and all claims, damages, or losses, including reasonable attorneys' fees, arising out of the use of the information and data furnished hereon. The recipient may not transfer these data to others without the written consent of the U.S. Army Corps of Engineers.

U.S. ARMY CORPS OF ENGINEERS		
Surveyed By:	Plotted By:	Checked By:

Survey Information
 IVORY_LANDING_UPPER_MISSISSIPPI
 UM_SL_ILC_20240328_BD_1
 28 March 2024



LAYERS

- River Mile
- Sailing Line
- 9' below LWRP2014 Surface
- 12' below LWRP2014 Surface
- 14' below LWRP2014 Surface

Depths shown are below LWRP2014 Surface

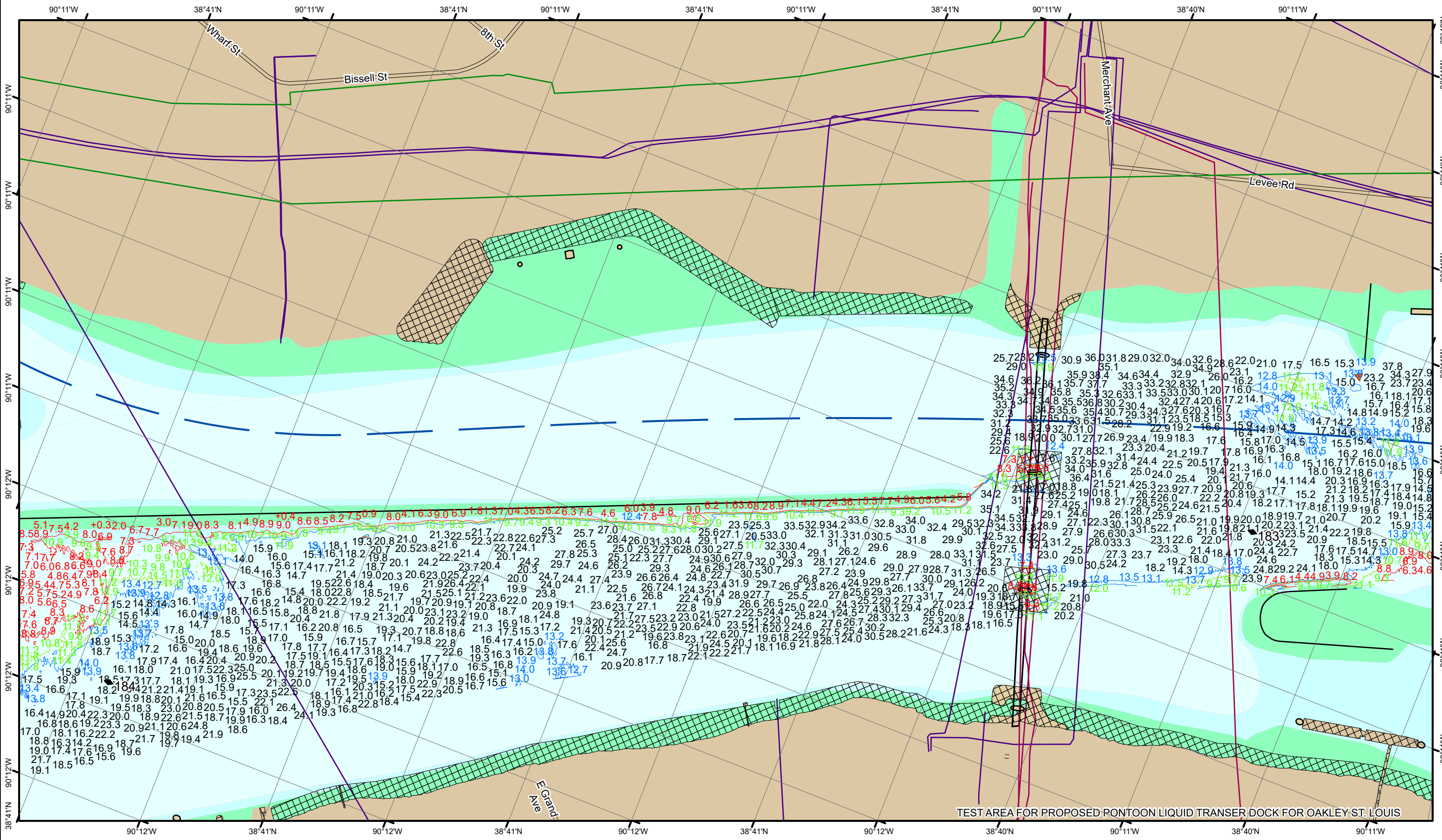
Aids to Navigation

- Green Buoy
- Red Buoy
- Junction
- Training Structure
- Revetment
- Tower/Power Poles
- Electrical Lines
- Fiber Optic Lines
- Pipelines

Scale: 0, 250, 500, 750, 1,000 Feet

NOTES:
 Horizontal Coordinate System:
 North American Datum of 1983 (NAD83), projected to the State Plane Coordinate System (SPCS), Missouri East Zone. Distance units in U.S. Survey Feet.
 Vertical Datum:
 Soundings are shown in feet and indicate depths below the 2014 Low Water Reference Plane.
 The information depicted on this map represents the results of a survey conducted on the date indicated and can only be considered to represent the general condition existing at that time.
 The location of navigation aids are based on and provided by the U.S. Coast Guard.

Reach Number
 37 of 45



DISCLAIMER: The United States Government Lenders...
 Distribution Liability: The data represents the results of data...
 Accuracy: The data represents the results of data...
 Use: This map is for informational purposes only and should not be used for navigation or other critical purposes.

Surveyed By:	Plotted By:	Checked By:

Survey Information
 IVORY_LANDING_UPPER_MISSISSIPPI
 UM_SL_ILC_20240328_BD_1
 28 March 2024



LAYERS

- River Mile
- Sailing Line
- 9' below LWRP2014 Surface
- 12' below LWRP2014 Surface
- 14' below LWRP2014 Surface

Depths shown are below LWRP2014 Surface

Aids to Navigation

- Green
- Red
- Junction
- Green Buoy
- Red Buoy

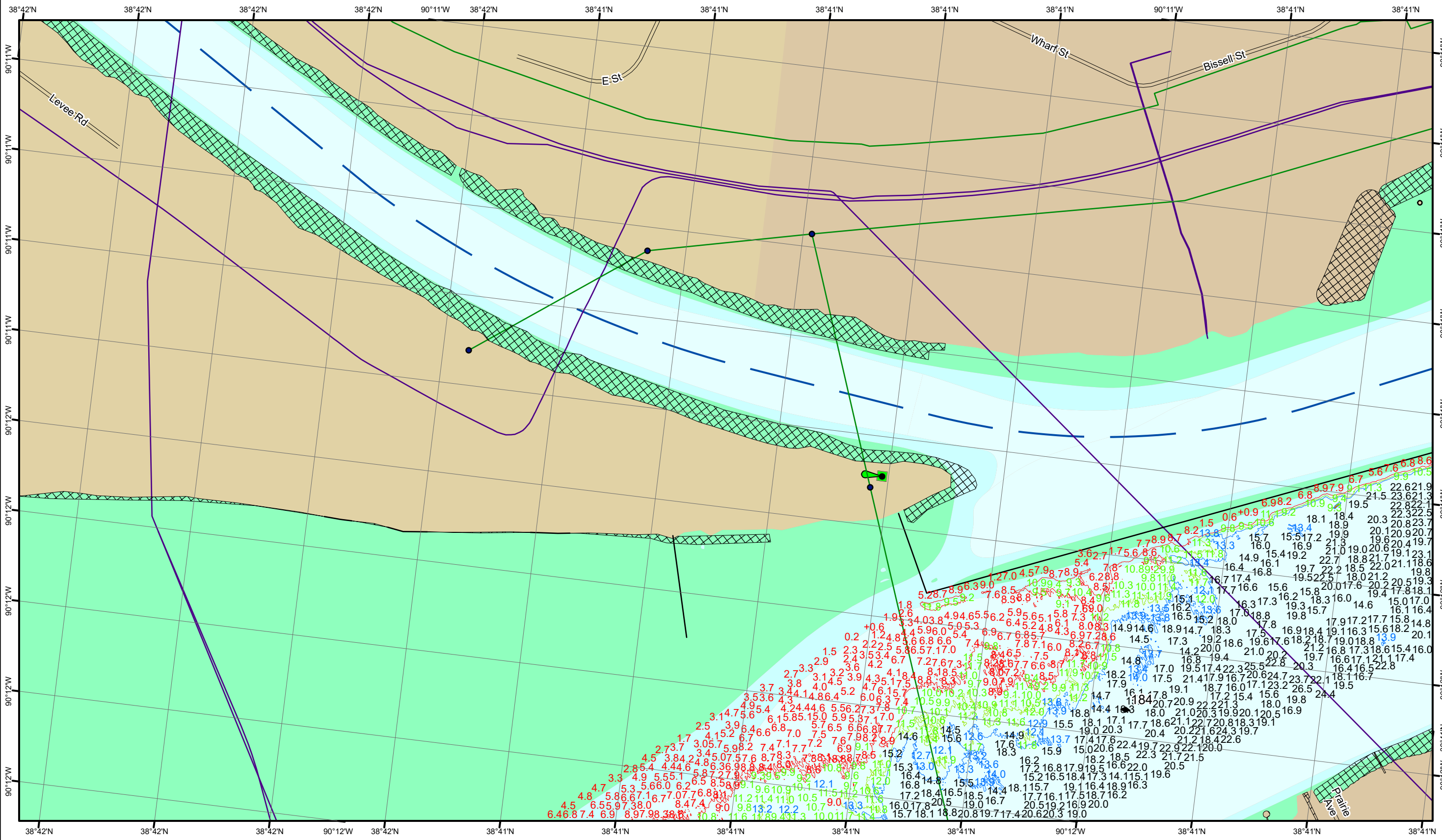
Infrastructure

- Training Structure
- Revetment
- Tower/Power Poles
- Electrical Lines
- Fiber Optic Lines
- Pipelines

Scale: 0, 250, 500, 750, 1,000 Feet

NOTES:
 Horizontal Coordinate System:
 North American Datum of 1983 (NAD83), projected to the State Plane Coordinate System (SPCS), Missouri East Zone. Distance units in U.S. Survey Feet.
 Vertical Datum:
 Soundings are shown in feet and indicate depths below the 2014 Low Water Reference Plane.
 The information depicted on this map represents the results of a survey conducted on the date indicated and can only be considered to represent the general condition existing at that time.
 The location of navigation aids are based on and provided by the U.S. Coast Guard.

Reach Number
 38 of 45



DISCLAIMER: The United States Government Lenders...
 The data presented in this map represents the results of a survey conducted on the date indicated and can only be considered to represent the general condition existing at that time. The location of navigation aids are based on and provided by the U.S. Coast Guard.

Surveyed By:	Plotted By:	Checked By:

Survey Information
 IVORY_LANDING_UPPER_MISSISSIPPI
 UM_SL_ILC_20240328_BD_1
 28 March 2024



LAYERS

- River Mile
- Sailing Line
- 9' below LWRP2014 Surface
- 12' below LWRP2014 Surface
- 14' below LWRP2014 Surface

Depths shown are below LWRP2014 Surface

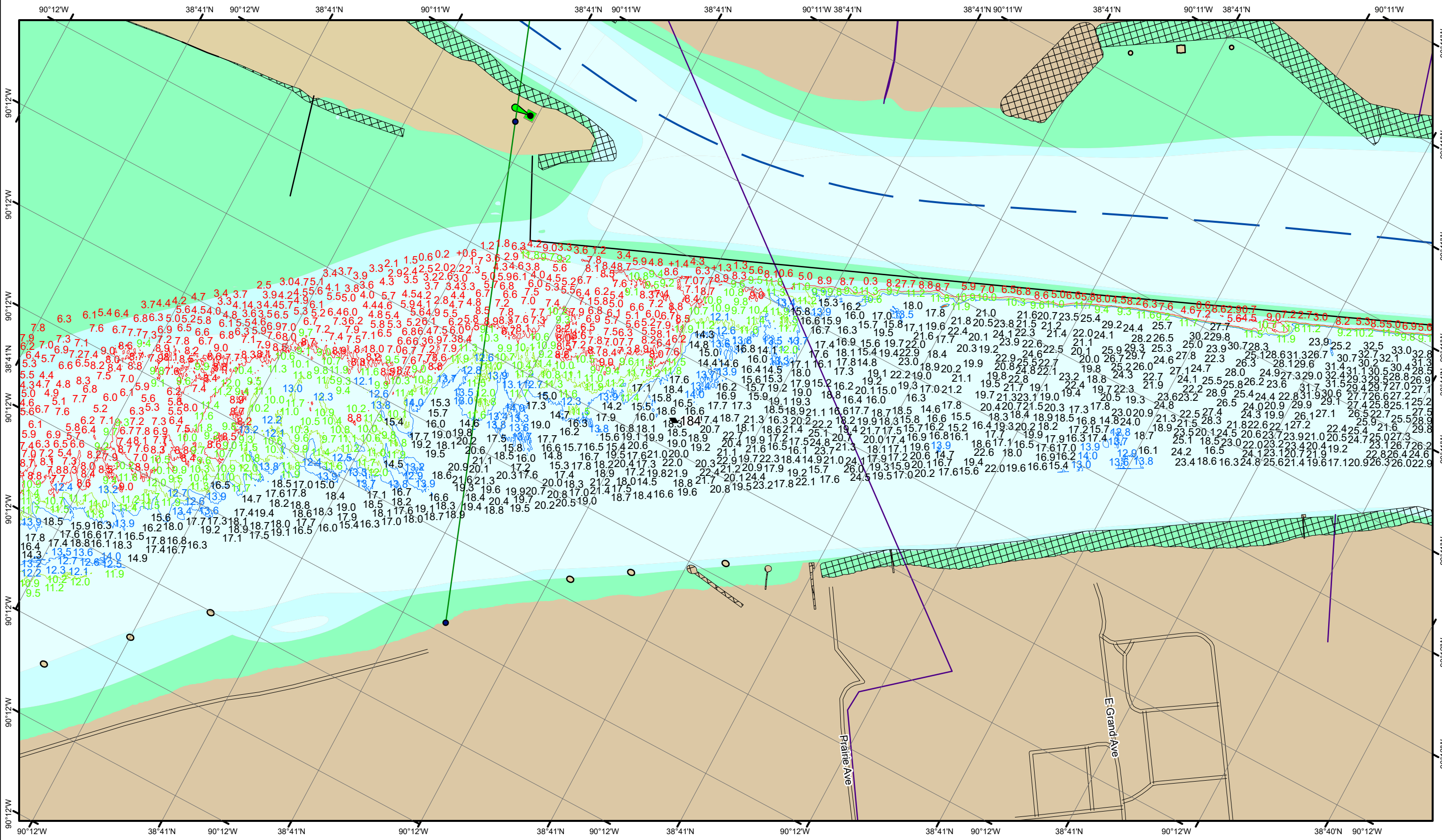
Aids to Navigation

- Green Buoy
- Red Buoy
- Junction
- Training Structure
- Revetment
- Tower/Power Poles
- Electrical Lines
- Fiber Optic Lines
- Pipelines

Scale: 0, 250, 500, 750, 1,000 Feet

NOTES:
 Horizontal Coordinate System:
 North American Datum of 1983 (NAD83), projected to the State Plane Coordinate System (SPCS), Missouri East Zone. Distance units in U.S. Survey Feet.
 Vertical Datum:
 Soundings are shown in feet and indicate depths below the 2014 Low Water Reference Plane.
 The information depicted on this map represents the results of a survey conducted on the date indicated and can only be considered to represent the general condition existing at that time. The location of navigation aids are based on and provided by the U.S. Coast Guard.

Reach Number
 39 of 45



DISCLAIMER: The United States Government neither warrants nor makes any representation, express or implied, regarding the accuracy, reliability, or completeness of the information and data furnished. The United States Government shall be held harmless for any loss or damage resulting from the use of the information and data furnished. The recipient may not transfer these data to others without obtaining the permission of the United States Government.

U.S. ARMY CORPS OF ENGINEERS		
Surveyed By:	Plotted By:	Checked By:

Survey Information
 IVORY_LANDING_UPPER_MISSISSIPPI
 UM_SL_ILC_20240328_BD_1
 28 March 2024



LAYERS

- River Mile
- Sailing Line
- 9' below LWRP2014 Surface
- 12' below LWRP2014 Surface
- 14' below LWRP2014 Surface

Depths shown are below LWRP2014 Surface

Aids to Navigation

- Green
- Red
- Junction
- Green Buoy
- Red Buoy

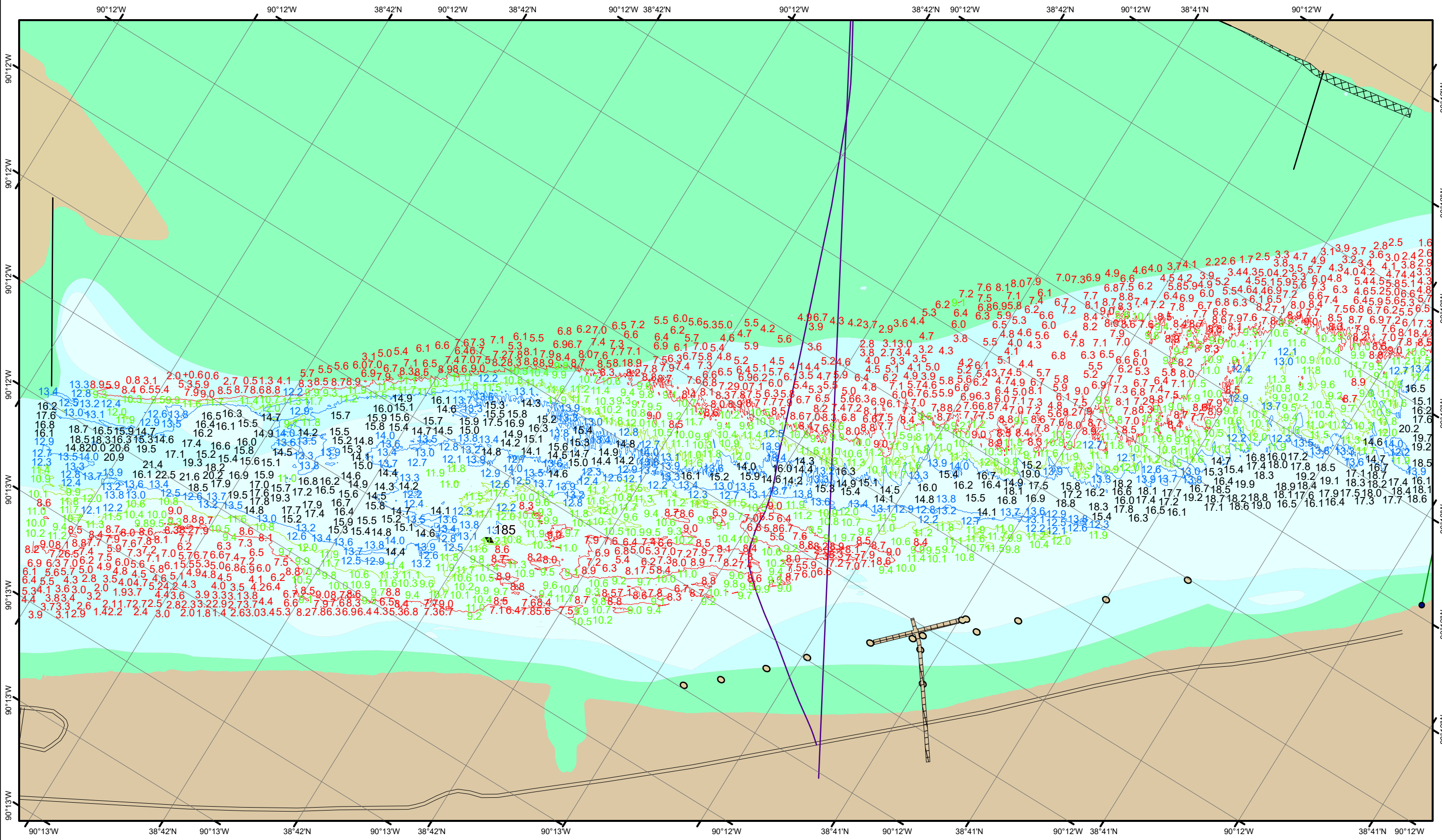
Infrastructure

- Training Structure
- Revetment
- Tower/Power Poles
- Electrical Lines
- Fiber Optic Lines
- Pipelines

Scale: 0 250 500 750 1,000 Feet

NOTES:
 Horizontal Coordinate System:
 North American Datum of 1983 (NAD83), projected to the State Plane Coordinate System (SPCS), Missouri East Zone. Distance units in U.S. Survey Feet.
 Vertical Datum:
 Soundings are shown in feet and indicate depths below the 2014 Low Water Reference Plane.
 The information depicted on this map represents the results of a survey conducted on the date indicated and can only be considered to represent the general condition existing at that time.
 The location of navigation aids are based on and provided by the U.S. Coast Guard.

Reach Number
 40 of 45



DISCLAIMER: The United States Government Lenders and/or Borrowers make no warranty, representation, or guarantee, express or implied, in any way, as to the accuracy, completeness, or reliability of the data shown on this map. The data shown on this map is for informational purposes only and should not be used for any other purpose. The recipient of this data shall be responsible for its use and for any errors or omissions. The recipient may not transfer or disseminate this data to others without the written consent of the Corps of Engineers.

U.S. ARMY CORPS OF ENGINEERS		
Surveyed By:	Plotted By:	Checked By:

Survey Information
 IVORY_LANDING_UPPER_MISSISSIPPI
 UM_SL_ILC_20240328_BD_1
 28 March 2024



LAYERS

- River Mile
- Sailing Line
- 9' below LWRP2014 Surface
- 12' below LWRP2014 Surface
- 14' below LWRP2014 Surface

Depths shown are below LWRP2014 Surface

Aids to Navigation

- Green
- Red
- Junction
- Green Buoy
- Red Buoy

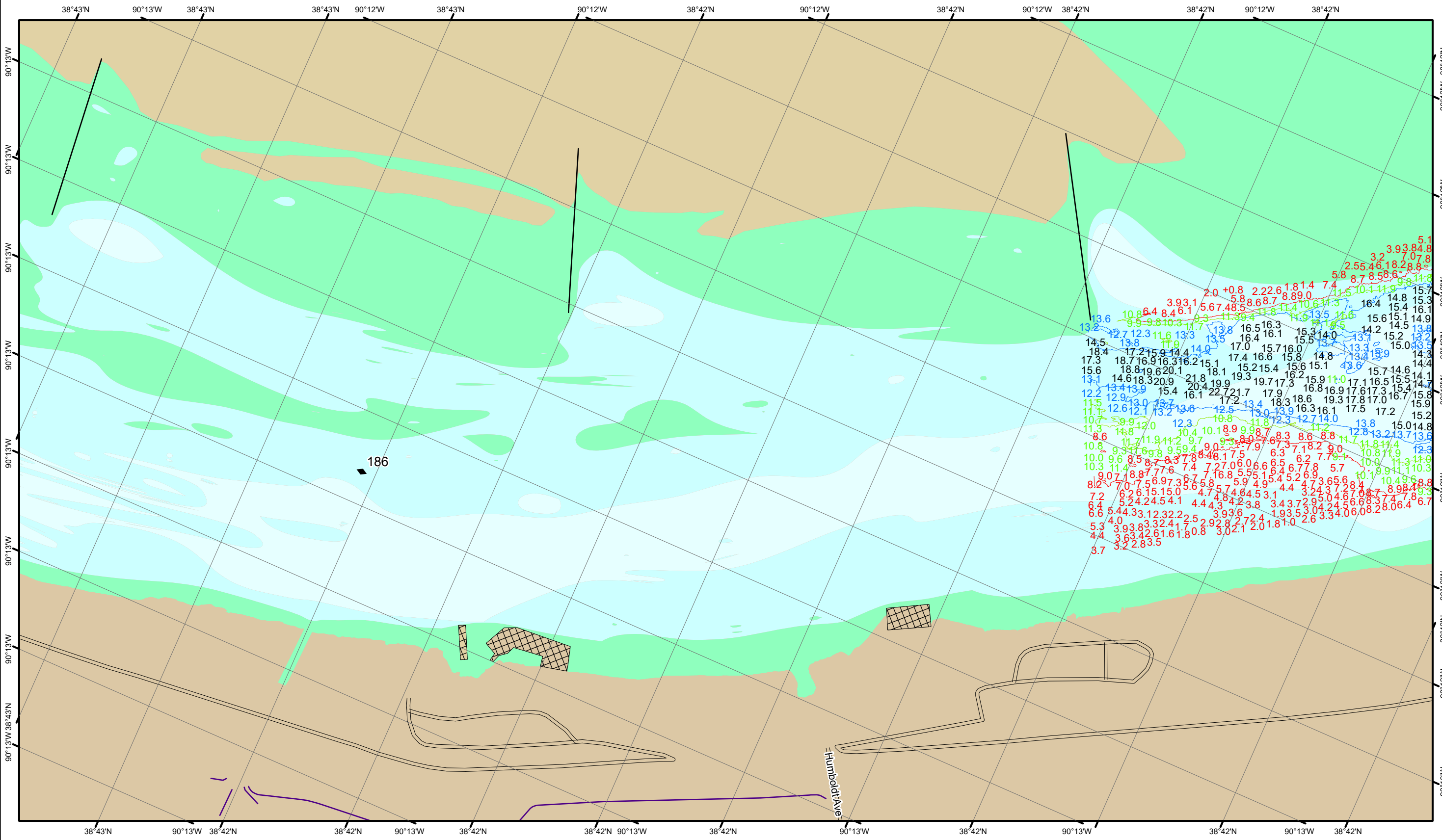
Infrastructure

- Training Structure
- Retevment
- Tower/Power Poles
- Electrical Lines
- Fiber Optic Lines
- Pipelines

Scale: 0, 250, 500, 750, 1,000 Feet

NOTES:
 Horizontal Coordinate System:
 North American Datum of 1983 (NAD83), projected to the State Plane Coordinate System (SPCS), Missouri East Zone. Distance units in U.S. Survey Feet.
 Vertical Datum:
 Soundings are shown in feet and indicate depths below the 2014 Low Water Reference Plane.
 The information depicted on this map represents the results of a survey conducted on the date indicated and can only be considered to represent the general condition existing at that time.
 The location of navigation aids are based on and provided by the U.S. Coast Guard.

Reach Number
 41 of 45



DISCLAIMER: The United States Government Lenders Access Center. The data represents the results of data collection/processing by a specific US Army Corps of Engineers project. The data is provided for informational purposes only. It is not intended for navigation. The user assumes all liability for any use of the data for other than its intended purpose. The United States Government makes no warranty, express or implied, in this data. The user assumes all liability for any use of the data for other than its intended purpose. The data is provided for informational purposes only. It is not intended for navigation. The user assumes all liability for any use of the data for other than its intended purpose.

Surveyed By:	Plotted By:	Checked By:
Number:	Document:	Approved:

Survey Information
 IVORY_LANDING_UPPER_MISSISSIPPI
 UM_SL_ILC_20240328_BD_1
 28 March 2024



LAYERS

- River Mile
- Sailing Line
- 9' below LWRP2014 Surface
- 12' below LWRP2014 Surface
- 14' below LWRP2014 Surface

Depths shown are below LWRP2014 Surface

Aids to Navigation

- Green
- Red
- Junction
- Green Buoy
- Red Buoy

Structures

- Training Structure
- Revetment
- Tower/Power Poles
- Electrical Lines
- Fiber Optic Lines
- Pipelines

Scale: 0 250 500 750 1,000 Feet

NOTES:
 Horizontal Coordinate System:
 North American Datum of 1983 (NAD83), projected to the State Plane Coordinate System (SPCS), Missouri East Zone. Distance units in U.S. Survey Feet.
 Vertical Datum:
 Soundings are shown in feet and indicate depths below the 2014 Low Water Reference Plane.
 The information depicted on this map represents the results of a survey conducted on the date indicated and can only be considered to represent the general condition existing at that time.
 The location of navigation aids are based on and provided by the U.S. Coast Guard.

Reach Number
 42 of 45